

# RESPIRATORY VIRUS DETECTION REPORT

November 5 to November 11, 2023  
(Surveillance Week 2023-45)



Please note that the Respiratory Virus Detection Surveillance System (RVDSS) is a sentinel laboratory surveillance system that does not capture all respiratory virus testing performed in Canada; differences may exist between the data presented in this report and provincial/territorial epidemiological reports. SARS-CoV-2 laboratory data is included in this report to facilitate the comparison of positivity with other respiratory viruses. Interpretation should be made with caution as testing practices differ among viruses.

For additional SARS-CoV-2 surveillance information, please refer to the [COVID-19 epidemiology update](#).

## Overall Summary

In week 45 (week ending November 11, 2023) in Canada, participating RVDSS laboratories reported 6,986 detections of SARS-CoV-2 from 38,465 tests (18.2% positive). Among non-SARS-CoV-2 respiratory viruses, where test volumes are lower (range of 7,302 to 24,911 tests), activity of both flu and RSV is increasing, as is expected at this time of year.

- Over the past five surveillance weeks, national SARS-CoV-2 percent positivity has remained stable.
- Activity of RSV is increasing and slightly above expected levels for this time of year (1,220 detections; 5.3% positive).
- At the national level, activity of influenza is increasing, but is within expected levels for this time of year as activity remains below seasonal threshold levels (1,071 detections; 4.3% positive). Influenza percent positivity currently varies greatly by region.
- Activity of all other non-SARS-CoV-2 respiratory viruses is low and near expected levels typical of this time of year.
- 34/35 sentinel laboratories reported surveillance data

## Abbreviations

ADV: Adenovirus

Atl: Atlantic Canada

BC: British Columbia

Can: Canada

EORLA: Eastern Ontario Regional Laboratory Association

EV/RV: Enterovirus/Rhinovirus

Flu: Influenza

Flu A(H1N1)pdm09: Influenza A(H1N1)pdm09

Flu A(H3): Influenza A(H3N2)

Flu A (UnS): Influenza A(Unsubtyped)

HCoV: Human coronavirus 229E/OC43/NL63/HKU1

HMPV: Human metapneumovirus

HPIV: Human parainfluenza virus

HSC: Health Sciences Centre

N.C.: Data not collected

N.R.: Data not reported for current week

ON: Ontario

PR: Prairies

P.H.O.L.: Public Health Ontario Laboratory

QC: Quebec

RSV: Respiratory syncytial virus

RVDSS: Respiratory Virus Detection Surveillance System

SARS-CoV-2: Severe acute respiratory syndrome coronavirus 2

Terr: Territories of Canada

UHN: University Health Network

© His Majesty the King in Right of Canada, as represented by the Minister of Health, 2021

ISSN: 2564-2359 | Cat.: HP38-7E-PDF | Pub.: 210284

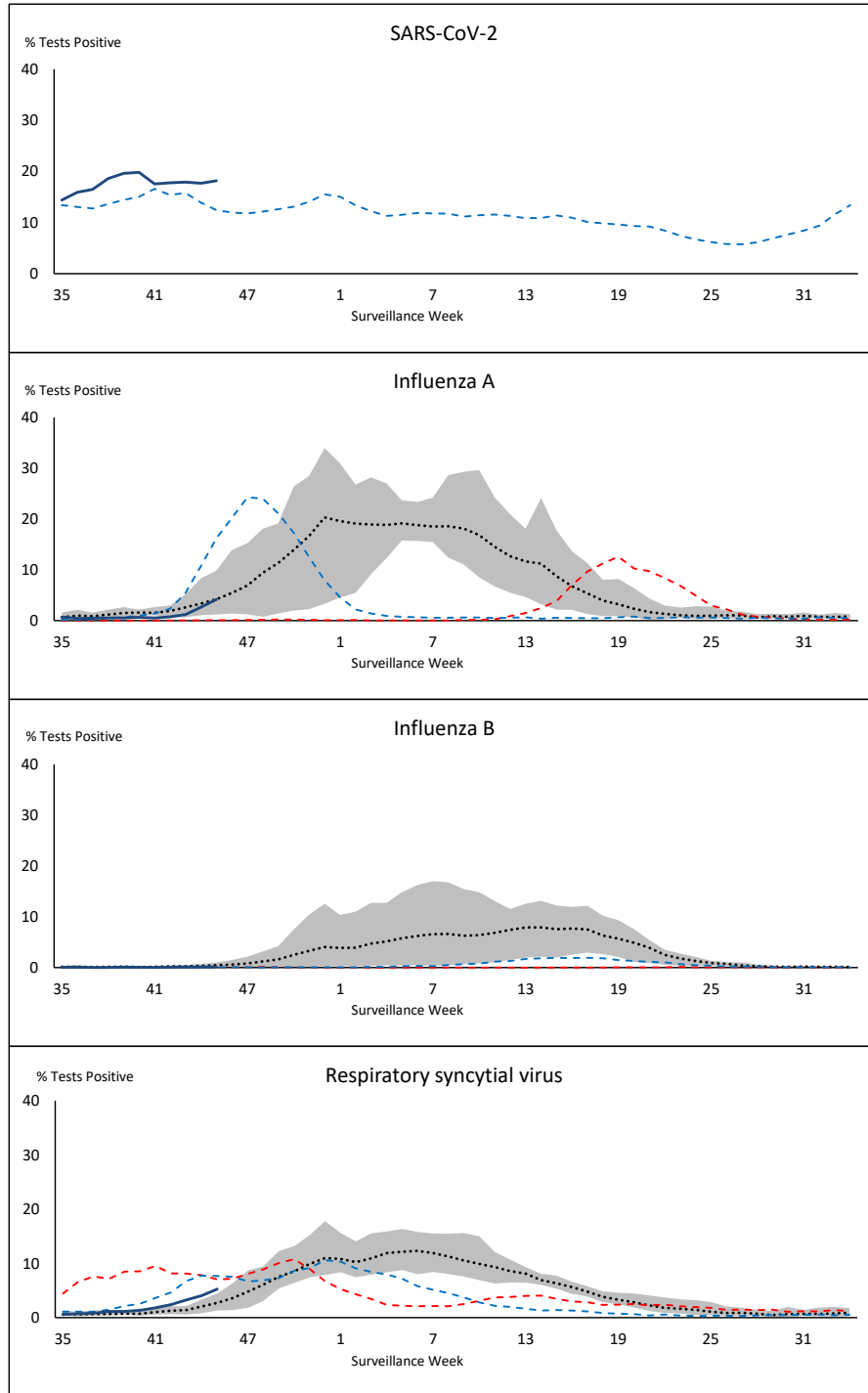


Public Health  
Agency of Canada

Agence de la santé  
publique du Canada

Canada

**Figure 1: Positive severe acute respiratory syndrome coronavirus 2 (SARS-CoV-2), influenza, and respiratory syncytial virus tests (%) reported by participating laboratories in Canada by surveillance week compared to average and range from 2014-2015 to 2019-2020 season**



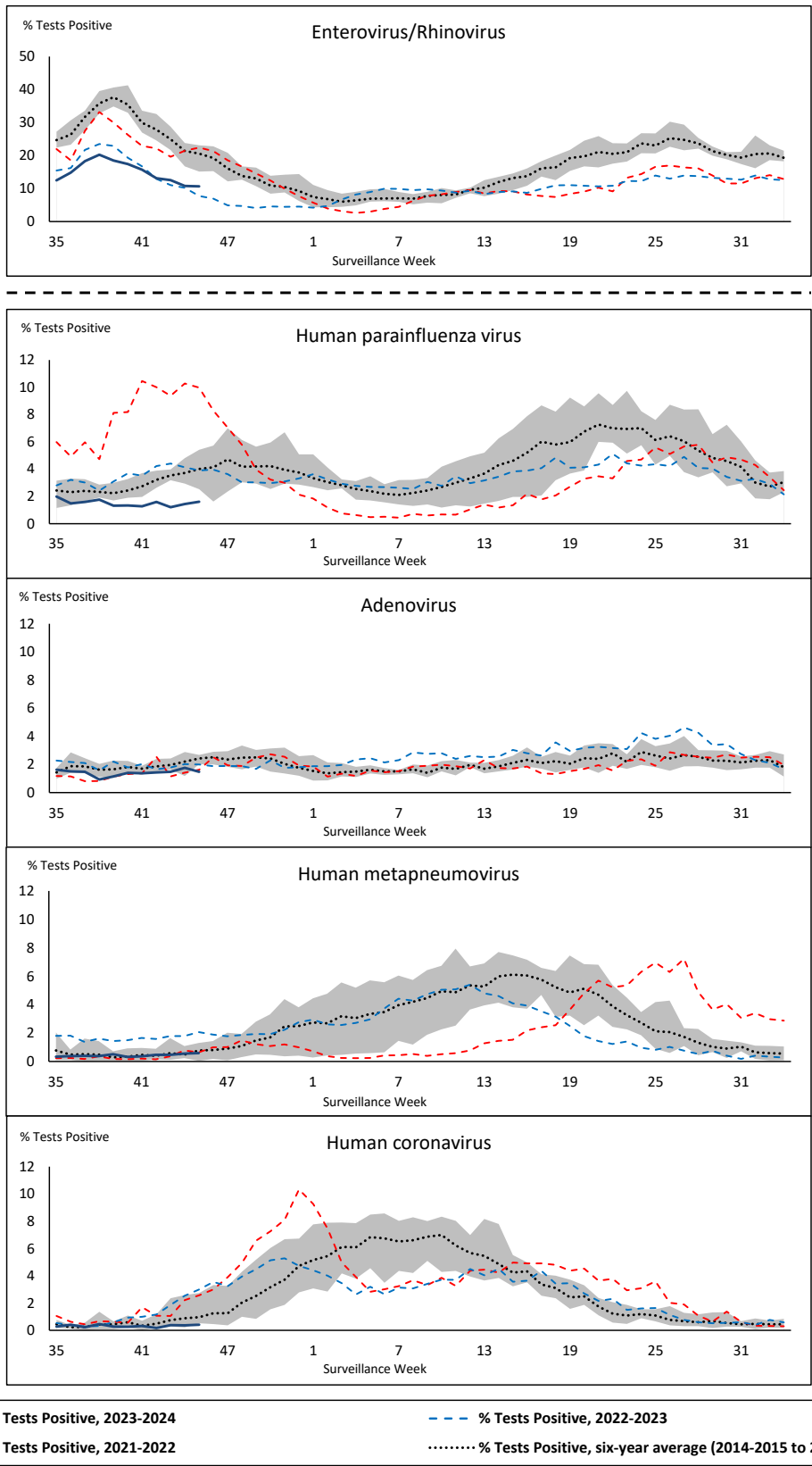
Shaded area represents the maximum and minimum % of respiratory virus tests positive reported by week from seasons 2014-2015 to 2019-2020

Note: Changes to testing practices during the COVID-19 pandemic may cause substantial changes to indicator estimates from previous years. Collection of laboratory testing practice meta-data to understand these changes is ongoing. Interpret trends with caution.

Note: SARS-CoV-2 surveillance was integrated into RVDSS at the beginning of the 2022-2023 season; no prior data is available for historical comparison.

Note: Data from week 11 of the 2019-2020 season onwards are excluded from the historical comparison due to the COVID-19 pandemic.

**Figure 2: Positive tests (%) of other respiratory viruses reported by participating laboratories in Canada by surveillance week compared to average and range from 2014-2015 to 2019-2020 season**



Shaded area represents the maximum and minimum % of respiratory virus tests positive reported by week from seasons 2014-2015 to 2019-2020

Note: Changes to testing practices during the COVID-19 pandemic may cause substantial changes to indicator estimates from previous years. Collection of laboratory testing practice meta-data to understand these changes is ongoing. Interpret trends with caution.

Note: Data from week 11 of the 2019-2020 season onwards are excluded from the historical comparison due to the COVID-19 pandemic.

Note: % Tests Positive scale changes across the dashed line

**Table 1: Respiratory virus detections for the week ending November 11, 2023 (surveillance week 2023-45)**

Reporting Laboratory	SARS-CoV-2 Tested	SARS-CoV-2 Positive	Flu Tested	A(H1)pdm09 Positive	A(H3) Positive	A(UnS) Positive	Total Flu A Positive	Total Flu B Positive	RSV Tested	RSV Positive	HPIV Tested	HPIV 1 Positive	HPIV 2 Positive	HPIV 3 Positive	HPIV 4 Positive	Other HPIV Positive	ADV Tested	ADV Positive	HMPV Tested	HMPV Positive	EV/RV Tested	EV/RV Positive	HCoV Tested	HCoV Positive
Newfoundland	519	113	345	0	0	25	25	0	345	13	345	1	2	0	2	0	345	8	345	1	345	46	345	4
Prince Edward Island	231	34	118	0	0	4	4	0	118	0	9	0	0	0	0	0	9	0	9	0	9	4	9	0
Nova Scotia	1435	342	744	0	0	9	9	3	744	33	48	0	1	0	1	0	48	3	48	0	48	13	48	0
New Brunswick	937	139	862	2	1	1	4	0	851	11	65	0	0	0	6	0	65	1	65	0	65	15	65	0
<b>Atlantic</b>	<b>3122</b>	<b>628</b>	<b>2069</b>	<b>2</b>	<b>1</b>	<b>39</b>	<b>42</b>	<b>3</b>	<b>2058</b>	<b>57</b>	<b>467</b>	<b>1</b>	<b>3</b>	<b>0</b>	<b>9</b>	<b>0</b>	<b>467</b>	<b>12</b>	<b>467</b>	<b>1</b>	<b>467</b>	<b>78</b>	<b>467</b>	<b>4</b>
Région Nord-Est	1608	343	1315	0	0	5	5	0	543	18	55	1	2	0	0	0	55	3	54	1	N.C.	N.C.	55	1
Québec-Chaudière-Appalaches	1969	357	670	0	0	4	4	2	672	57	267	3	2	0	1	0	283	15	267	5	N.C.	N.C.	267	0
Centre-du-Québec	2247	427	810	0	0	6	6	0	545	59	50	0	1	0	0	0	50	2	50	2	N.C.	N.C.	51	0
Montréal-Laval	2562	437	1385	0	0	13	13	1	1188	108	644	3	2	2	1	0	644	12	644	17	N.C.	N.C.	644	4
Ouest du Québec	1750	463	643	0	0	5	5	0	640	56	33	1	0	0	1	0	33	3	33	0	N.C.	N.C.	33	0
Montérégie	1489	282	916	0	0	16	16	1	856	61	0	0	0	0	0	0	0	0	0	0	N.C.	N.C.	0	0
<b>Province of Québec</b>	<b>11625</b>	<b>2309</b>	<b>5739</b>	<b>0</b>	<b>0</b>	<b>49</b>	<b>49</b>	<b>4</b>	<b>4444</b>	<b>359</b>	<b>1049</b>	<b>8</b>	<b>7</b>	<b>2</b>	<b>3</b>	<b>0</b>	<b>1065</b>	<b>35</b>	<b>1048</b>	<b>25</b>	<b>N.C.</b>	<b>N.C.</b>	<b>1050</b>	<b>5</b>
P.H.O.L. - Ottawa	292	110	213	0	0	1	1	0	213	11	128	0	0	0	0	1	128	1	128	3	128	20	128	3
EORLA	1530	234	618	0	0	11	11	0	618	105	44	0	0	0	0	0	44	1	44	0	44	10	44	0
P.H.O.L. - Kingston	202	76	116	0	0	0	0	0	116	7	92	0	0	0	0	1	92	1	92	0	92	14	92	0
UHN / Mount Sinai Hospital	1086	95	686	0	0	3	3	2	686	5	19	0	0	0	0	0	19	0	19	0	19	0	19	0
P.H.O.L. - Toronto	639	211	1012	29	7	1	27	2	1012	35	929	0	0	0	0	22	929	10	929	3	929	88	929	1
Sick Kids Hospital - Toronto	158	9	135	4	2	8	14	0	135	33	135	1	1	2	1	0	135	1	135	0	135	41	135	0
Shared Hospital Laboratory	1778	227	1441	4	1	3	8	0	1442	109	1421	0	0	0	0	7	1421	10	1423	1	1423	63	1423	4
P.H.O.L. - Sault Ste. Marie	22	18	6	0	0	0	0	0	6	0	6	0	0	0	0	0	6	0	6	0	6	1	6	0
P.H.O.L. - Timmins	57	29	23	0	0	0	0	0	23	0	20	0	0	0	0	1	20	0	20	0	20	2	20	0
St. Joseph's - London	740	118	409	0	0	3	3	0	409	39	49	0	0	0	0	1	49	0	49	0	49	9	49	1
P.H.O.L. - London	605	206	382	5	0	0	5	0	382	37	284	0	0	0	0	3	284	2	284	0	284	34	284	0
P.H.O.L. - Orillia	20	15	54	0	0	0	0	0	54	6	54	0	0	0	0	4	54	0	54	0	54	11	54	0
P.H.O.L. - Thunder Bay	71	13	31	0	0	0	0	0	31	0	30	0	0	0	0	2	30	0	30	0	30	5	30	0
P.H.O.L. - Sudbury	31	18	26	0	0	0	0	0	26	0	23	0	0	0	0	0	23	0	23	0	23	0	23	0
P.H.O.L. - Hamilton	239	79	237	4	0	0	3	0	237	6	207	0	0	0	0	3	207	6	207	1	207	25	207	1
P.H.O.L. - Peterborough	85	54	75	0	0	0	0	0	75	16	65	0	0	0	0	1	65	3	65	1	65	16	65	0
St. Joseph's - Hamilton	1836	199	1637	0	0	13	13	1	1637	143	1637	0	0	2	0	0	1637	12	1637	2	1637	108	0	0
Sault Area Hospital	218	41	141	1	0	1	2	0	141	0	101	2	1	0	3	0	101	1	101	0	101	8	101	0
<b>Province of Ontario</b>	<b>9609</b>	<b>1752</b>	<b>7242</b>	<b>47</b>	<b>10</b>	<b>44</b>	<b>90</b>	<b>5</b>	<b>7243</b>	<b>552</b>	<b>5244</b>	<b>3</b>	<b>1</b>	<b>4</b>	<b>4</b>	<b>46</b>	<b>5244</b>	<b>48</b>	<b>5246</b>	<b>11</b>	<b>5246</b>	<b>455</b>	<b>3609</b>	<b>10</b>
Manitoba	1598	398	1182	0	1	29	30	0	1182	14	69	0	0	0	1	0	69	0	108	1	69	16	108	1
Saskatchewan	3043	450	1660	0	0	425	425	3	1544	25	496	1	0	0	1	0	496	13	496	8	496	49	496	1
Alberta	5761	923	3484	227	22	17	266	13	3242	81	850	4	4	4	0	0	850	13	832	0	834	83	850	4
<b>Prairies</b>	<b>10402</b>	<b>1771</b>	<b>6326</b>	<b>227</b>	<b>23</b>	<b>471</b>	<b>721</b>	<b>16</b>	<b>5968</b>	<b>120</b>	<b>1415</b>	<b>5</b>	<b>4</b>	<b>4</b>	<b>2</b>	<b>0</b>	<b>1415</b>	<b>26</b>	<b>1436</b>	<b>9</b>	<b>1399</b>	<b>148</b>	<b>1454</b>	<b>6</b>
British Columbia	3544	506	3436	51	5	3	136	5	3435	124	763	9	13	7	9	0	763	11	763	7	722	155	722	6
Yukon	55	8	33	0	0	0	0	0	33	4	N.C.	N.C.	N.C.	N.C.	N.C.	N.C.	N.C.	N.C.	N.C.	N.C.	N.C.	N.C.	N.C.	N.C.
Northwest Territories	N.R.	N.R.	N.R.	N.R.	N.R.	N.R.	N.R.	N.R.	N.R.	N.R.	N.C.	N.C.	N.C.	N.C.	N.C.	N.C.	N.C.	N.C.	N.C.	N.C.	N.R.	N.R.	N.C.	N.C.
Nunavut	108	12	66	0	0	0	0	0	66	4	N.C.	N.C.	N.C.	N.C.	N.C.	N.C.	N.C.	N.C.	N.C.	N.C.	N.C.	N.C.	N.C.	N.C.
<b>Territories</b>	<b>163</b>	<b>20</b>	<b>99</b>	<b>0</b>	<b>0</b>	<b>0</b>	<b>0</b>	<b>0</b>	<b>99</b>	<b>8</b>	<b>N.C.</b>	<b>N.C.</b>	<b>N.C.</b>	<b>N.C.</b>	<b>N.C.</b>	<b>N.C.</b>	<b>N.C.</b>	<b>N.C.</b>	<b>N.C.</b>	<b>N.C.</b>	<b>N.R.</b>	<b>N.R.</b>	<b>N.C.</b>	<b>N.C.</b>
<b>CANADA</b>	<b>38465</b>	<b>6986</b>	<b>24911</b>	<b>327</b>	<b>39</b>	<b>606</b>	<b>1038</b>	<b>33</b>	<b>23247</b>	<b>1220</b>	<b>8938</b>	<b>26</b>	<b>28</b>	<b>17</b>	<b>27</b>	<b>46</b>	<b>8954</b>	<b>132</b>	<b>8960</b>	<b>53</b>	<b>7834</b>	<b>836</b>	<b>7302</b>	<b>31</b>

The data in the RVDSS report represent surveillance data available at the time of writing. Data missing from the current week are denoted by N.R. Data not collected by reporting lab denoted by N.C.

Some specimens from Yukon (YT) are sent to reference laboratories in British Columbia and reported results reflect specimens identified as originating from YT.

Results from British Columbia comprise of specimens from the following sites: Children's and Women's Hospital Laboratory, Fraser Health Medical Microbiology Laboratory, Island Health, Providence Health Care, Vancouver Coastal Health sites, Victoria General Hospital, BCCDC Public Health Laboratory, Interior Health Authority sites and Northern Health Authority sites.

Due to different testing protocols of laboratories across Canada, influenza A subtype detection counts may not be included in total influenza A detection counts. Total influenza A and B positive counts are used to calculate percentage of tests positive.

Delays in the reporting of data may cause data to change retrospectively.

**Table 2: Cumulative respiratory virus detections from August 27, 2023 to November 11, 2023 (surveillance weeks 2023-35 to 2023-45)**

Reporting Laboratory	SARS-CoV-2 Tested	SARS-CoV-2 Positive	Flu Tested	A(H1)pdm09 Positive	A(H3) Positive	A(UnS) Positive	Total Flu A Positive	Total Flu B Positive	RSV Tested	RSV Positive	HPIV Tested	HPIV 1 Positive	HPIV 2 Positive	HPIV 3 Positive	HPIV 4 Positive	Other HPIV Positive	ADV Tested	ADV Positive	HMPV Tested	HMPV Positive	EV/RV Tested	EV/RV Positive	HCoV Tested	HCoV Positive	
Newfoundland	5608	1024	3636	0	0	53	53	0	3636	38	3636	4	10	6	36	0	3636	53	3636	11	3636	673	3636	13	
Prince Edward Island	2076	260	527	0	0	6	6	0	527	3	100	0	0	0	3	0	99	4	89	0	99	47	83	0	
Nova Scotia	15582	3850	6477	0	0	39	39	5	6477	106	412	14	2	1	7	0	412	22	405	1	412	135	411	0	
New Brunswick	9460	1397	7102	14	2	6	22	1	6985	59	690	6	2	0	13	0	690	12	690	0	690	200	690	1	
<b>Atlantic</b>	<b>32726</b>	<b>6531</b>	<b>17742</b>	<b>14</b>	<b>2</b>	<b>104</b>	<b>120</b>	<b>6</b>	<b>17625</b>	<b>206</b>	<b>4838</b>	<b>24</b>	<b>14</b>	<b>7</b>	<b>59</b>	<b>0</b>	<b>4837</b>	<b>91</b>	<b>4820</b>	<b>12</b>	<b>4837</b>	<b>1055</b>	<b>4820</b>	<b>14</b>	
Région Nord-Est	17848	3396	12769	0	0	21	21	1	3437	91	647	11	7	2	14	0	647	23	641	13	N.C.	N.C.	647	1	
Québec-Chaudière-Appalaches	23843	4234	6269	0	0	22	22	6	6276	273	2694	12	4	1	9	0	2841	134	2694	38	N.C.	N.C.	2694	2	
Centre-du-Québec	24008	4934	5402	0	0	25	25	4	4717	243	379	11	7	4	3	0	379	18	379	6	N.C.	N.C.	382	1	
Montréal-Laval	34182	5528	14179	0	0	70	70	6	12685	549	7497	66	25	32	19	0	7497	138	7515	89	N.C.	N.C.	7497	51	
Ouest du Québec	19665	4859	5761	1	0	30	31	6	5748	240	230	8	3	1	5	0	230	16	230	3	N.C.	N.C.	230	1	
Montréal	16884	3301	8973	0	0	58	58	10	8351	286	61	1	0	0	1	0	61	1	61	0	N.C.	N.C.	61	0	
<b>Province of Québec</b>	<b>136430</b>	<b>26252</b>	<b>53353</b>	<b>1</b>	<b>0</b>	<b>226</b>	<b>227</b>	<b>33</b>	<b>41214</b>	<b>1682</b>	<b>11508</b>	<b>109</b>	<b>46</b>	<b>40</b>	<b>51</b>	<b>0</b>	<b>11655</b>	<b>330</b>	<b>11520</b>	<b>149</b>	<b>N.C.</b>	<b>N.C.</b>	<b>11511</b>	<b>56</b>	
P.H.O.L. - Ottawa	4254	1566	2489	10	0	2	12	0	2489	27	1486	0	0	0	0	21	1486	1	1486	4	1486	284	1486	19	
EORLA	14068	1632	5003	0	0	26	26	4	5003	447	354	0	3	2	1	0	329	2	354	1	354	91	354	1	
P.H.O.L. - Kingston	2905	878	1383	1	0	0	0	0	1383	16	1049	0	0	0	0	25	1049	5	1049	0	1049	219	1049	1	
UHN / Mount Sinai Hospital	10942	891	6336	0	0	13	13	9	6336	33	241	0	0	4	0	0	241	1	241	0	241	13	241	0	
P.H.O.L. - Toronto	6566	2220	10224	96	32	3	94	3	10224	138	9238	0	0	0	0	265	9239	92	9235	44	9238	1767	9235	22	
Sick Kids Hospital - Toronto	1288	85	1101	13	10	15	38	1	1101	119	1101	11	5	8	6	0	1101	29	1101	6	1101	217	1101	4	
Shared Hospital Laboratory	13674	1393	13337	32	18	5	55	2	13340	453	13324	0	0	0	0	88	13322	98	13320	12	13347	831	13322	22	
P.H.O.L. - Sault Ste. Marie	175	135	135	0	0	0	0	0	135	0	77	0	0	0	0	1	77	0	77	0	77	14	77	0	
P.H.O.L. - Timmins	387	133	286	0	0	0	0	0	286	3	234	0	0	0	0	12	234	3	234	0	234	30	234	0	
St. Joseph's - London	8718	1284	1537	0	0	6	6	1	1537	81	934	0	0	0	0	10	951	6	951	1	951	142	951	4	
P.H.O.L. - London	5505	1824	3632	8	4	0	8	1	3632	84	2861	0	0	0	0	63	2861	15	2861	0	2861	471	2861	0	
P.H.O.L. - Orillia	211	45	477	2	1	0	3	0	476	24	463	0	0	0	0	15	463	11	463	2	463	116	463	0	
P.H.O.L. - Thunder Bay	694	263	358	0	0	0	0	0	358	0	280	0	0	0	0	7	280	1	280	1	280	42	280	1	
P.H.O.L. - Sudbury	244	116	235	0	0	0	0	0	233	0	169	0	0	0	0	2	170	1	169	0	169	33	169	0	
P.H.O.L. - Hamilton	2744	858	2168	9	1	0	5	1	2168	38	1590	0	0	0	0	44	1590	23	1590	14	1590	336	1590	2	
P.H.O.L. - Peterborough	783	293	748	0	0	1	1	1	748	87	656	0	0	0	0	17	656	12	656	2	656	169	656	2	
St. Joseph's - Hamilton	18650	1999	15918	0	0	49	49	13	15918	522	15918	0	0	42	0	0	15918	94	15918	35	15918	1427	0	0	
Sault Area Hospital	1525	199	1022	2	1	1	4	0	1015	4	776	2	0	2	5	0	776	8	776	0	776	123	786	0	
<b>Province of Ontario</b>	<b>93333</b>	<b>15814</b>	<b>66389</b>	<b>173</b>	<b>67</b>	<b>121</b>	<b>314</b>	<b>36</b>	<b>66382</b>	<b>2076</b>	<b>50751</b>	<b>13</b>	<b>8</b>	<b>58</b>	<b>12</b>	<b>570</b>	<b>50743</b>	<b>402</b>	<b>50761</b>	<b>122</b>	<b>50791</b>	<b>6325</b>	<b>34855</b>	<b>78</b>	
Manitoba	16482	3020	12729	0	3	61	64	5	12729	56	770	0	5	4	27	0	770	41	1205	3	770	293	1205	4	
Saskatchewan	22162	3034	10122	5	3	705	713	10	9738	79	3821	7	4	1	7	0	3821	113	3821	40	3821	698	3821	8	
Alberta	55146	8598	37600	702	107	33	842	54	34877	333	11597	48	37	21	3	0	11595	133	11513	2	11372	1736	11596	53	
<b>Prairies</b>	<b>93790</b>	<b>14652</b>	<b>60451</b>	<b>707</b>	<b>113</b>	<b>799</b>	<b>1619</b>	<b>69</b>	<b>57344</b>	<b>468</b>	<b>16188</b>	<b>55</b>	<b>46</b>	<b>26</b>	<b>37</b>	<b>0</b>	<b>16186</b>	<b>287</b>	<b>16539</b>	<b>45</b>	<b>15963</b>	<b>2727</b>	<b>16622</b>	<b>65</b>	
<b>British Columbia</b>	<b>38114</b>	<b>7103</b>	<b>34846</b>	<b>372</b>	<b>59</b>	<b>19</b>	<b>611</b>	<b>24</b>	<b>34828</b>	<b>432</b>	<b>7917</b>	<b>44</b>	<b>42</b>	<b>25</b>	<b>80</b>	<b>0</b>	<b>7917</b>	<b>184</b>	<b>7917</b>	<b>72</b>	<b>7521</b>	<b>1634</b>	<b>7498</b>	<b>33</b>	
Yukon	622	85	359	0	1	0	2	0	359	5	N.C.	N.C.	N.C.	N.C.	N.C.	N.C.	N.C.	N.C.	N.C.	N.C.	N.C.	N.C.	N.C.	N.C.	
Northwest Territories	201	29	162	3	0	0	3	0	162	0	N.C.	N.C.	N.C.	N.C.	N.C.	N.C.	N.C.	N.C.	N.C.	N.C.	N.C.	162	47	N.C.	N.C.
Nunavut	1057	156	681	0	1	0	1	0	681	8	N.C.	N.C.	N.C.	N.C.	N.C.	N.C.	N.C.	N.C.	N.C.	N.C.	N.C.	N.C.	N.C.	N.C.	
<b>Territories</b>	<b>1880</b>	<b>270</b>	<b>1202</b>	<b>3</b>	<b>2</b>	<b>0</b>	<b>6</b>	<b>0</b>	<b>1202</b>	<b>13</b>	<b>N.C.</b>	<b>N.C.</b>	<b>N.C.</b>	<b>N.C.</b>	<b>N.C.</b>	<b>N.C.</b>	<b>N.C.</b>	<b>N.C.</b>	<b>N.C.</b>	<b>N.C.</b>	<b>162</b>	<b>47</b>	<b>N.C.</b>	<b>N.C.</b>	
<b>CANADA</b>	<b>396273</b>	<b>70622</b>	<b>233983</b>	<b>1270</b>	<b>243</b>	<b>1269</b>	<b>2897</b>	<b>168</b>	<b>218595</b>	<b>4877</b>	<b>91202</b>	<b>245</b>	<b>156</b>	<b>156</b>	<b>239</b>	<b>570</b>	<b>91338</b>	<b>1294</b>	<b>91557</b>	<b>400</b>	<b>79274</b>	<b>11788</b>	<b>75306</b>	<b>246</b>	

The data in the RVDSS report represent surveillance data available at the time of writing. Data not collected by reporting lab denoted by N.C.

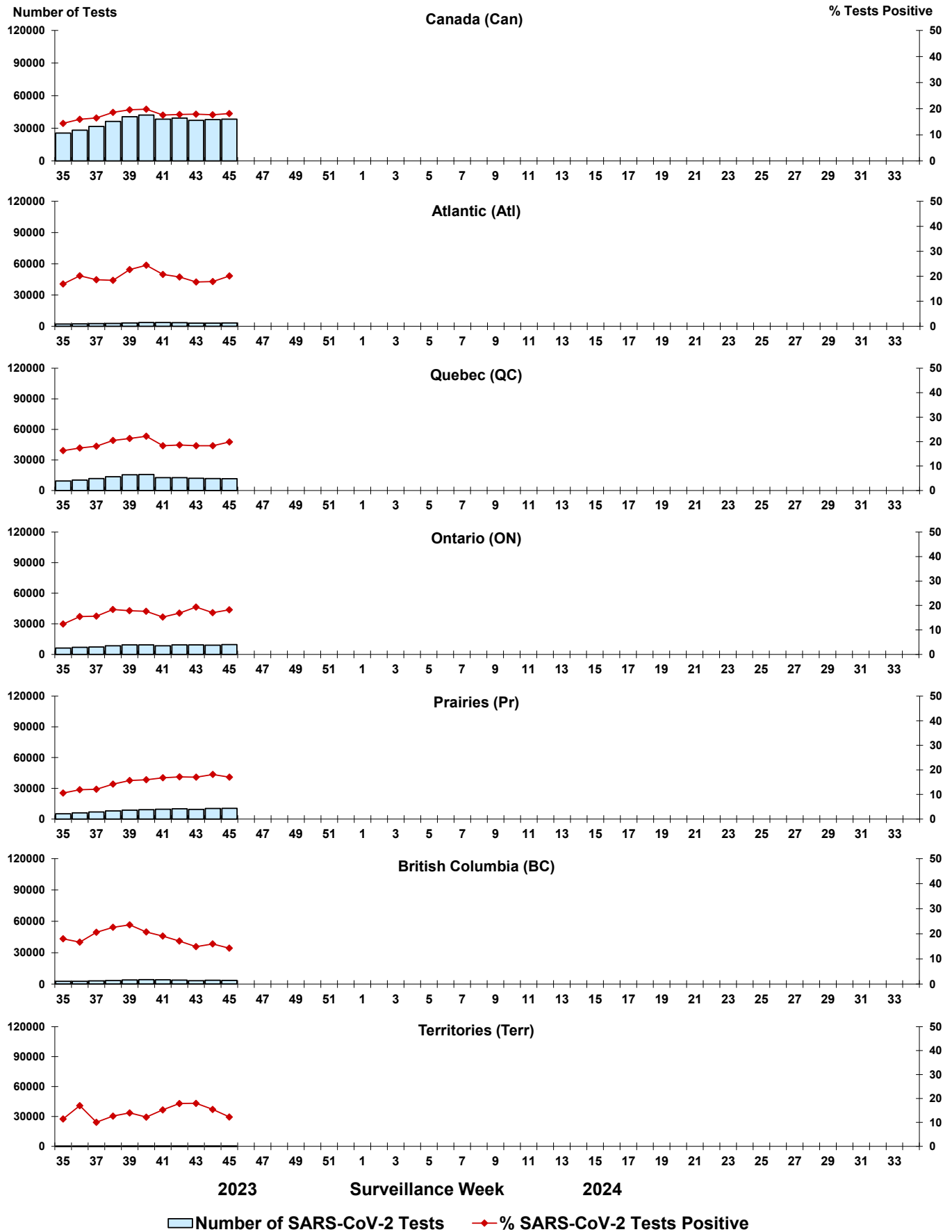
Some specimens from Yukon (YT) are sent to reference laboratories in British Columbia and reported results reflect specimens identified as originating from YT.

Results from British Columbia comprise of specimens from the following sites: Children's and Women's Hospital Laboratory, Fraser Health Medical Microbiology Laboratory, Island Health, Providence Health Care, Vancouver Coastal Health sites, Victoria General Hospital, BCCDC Public Health Laboratory, Interior Health Authority sites and Northern Health Authority sites.

Due to different testing protocols of laboratories across Canada, influenza A subtype detection counts may not be included in total influenza A detection counts. Total influenza A and B positive counts are used to calculate percentage of tests positive.

Delays in the reporting of data may cause data to change retrospectively. Due to these delays, the sum of weekly report totals do not add up to cumulative totals.

**Figure 3: Positive severe acute respiratory syndrome coronavirus 2 (SARS-CoV-2) tests (%) in Canada by region by surveillance week**



Note: Differences in positivity between jurisdictions can reflect differences in testing practices. Please interpret with caution.

Figure 4: Positive Influenza (Flu) tests (%) in Canada by region by surveillance week

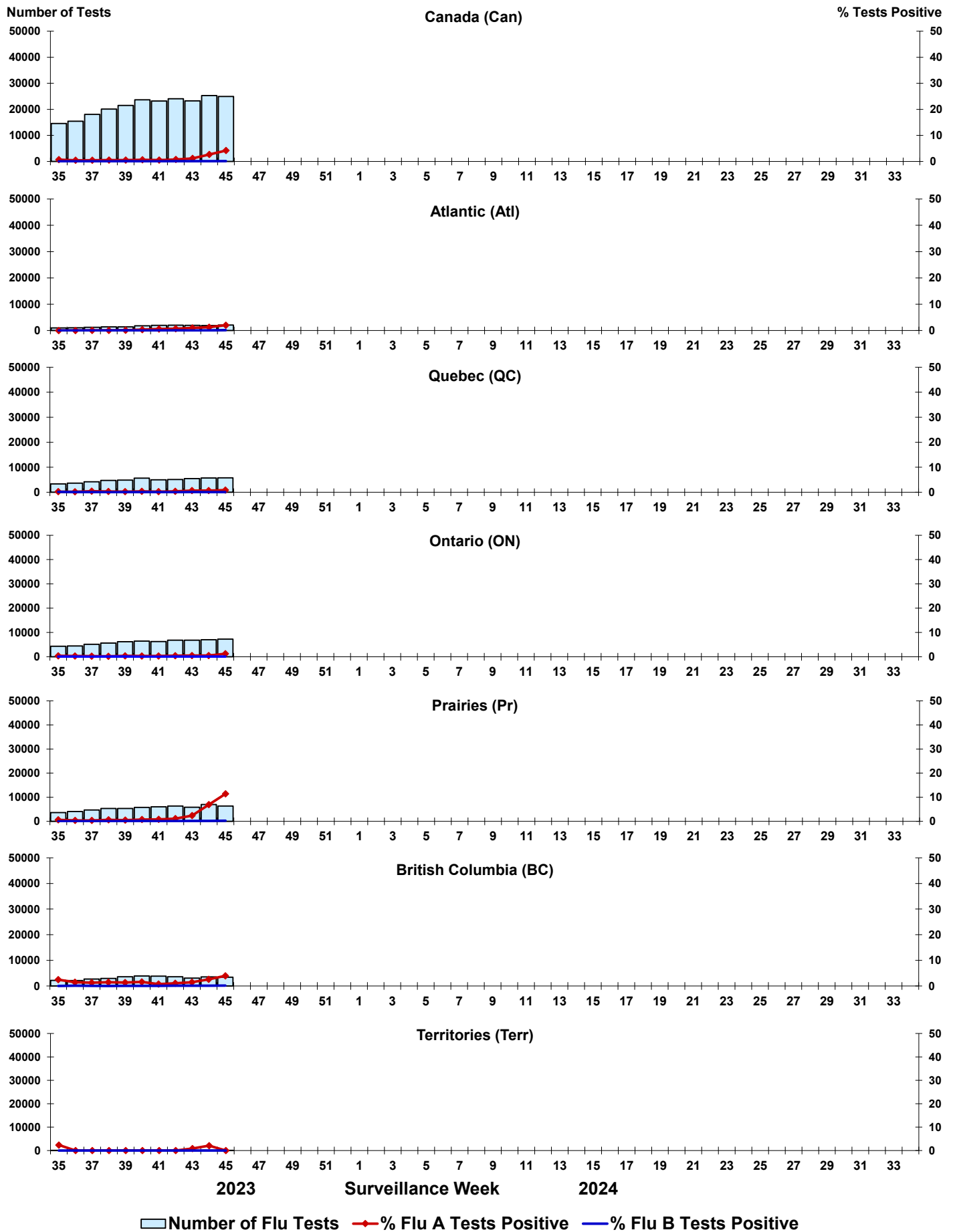


Figure 5: Positive Respiratory syncytial virus (RSV) tests (%) in Canada by region by surveillance week

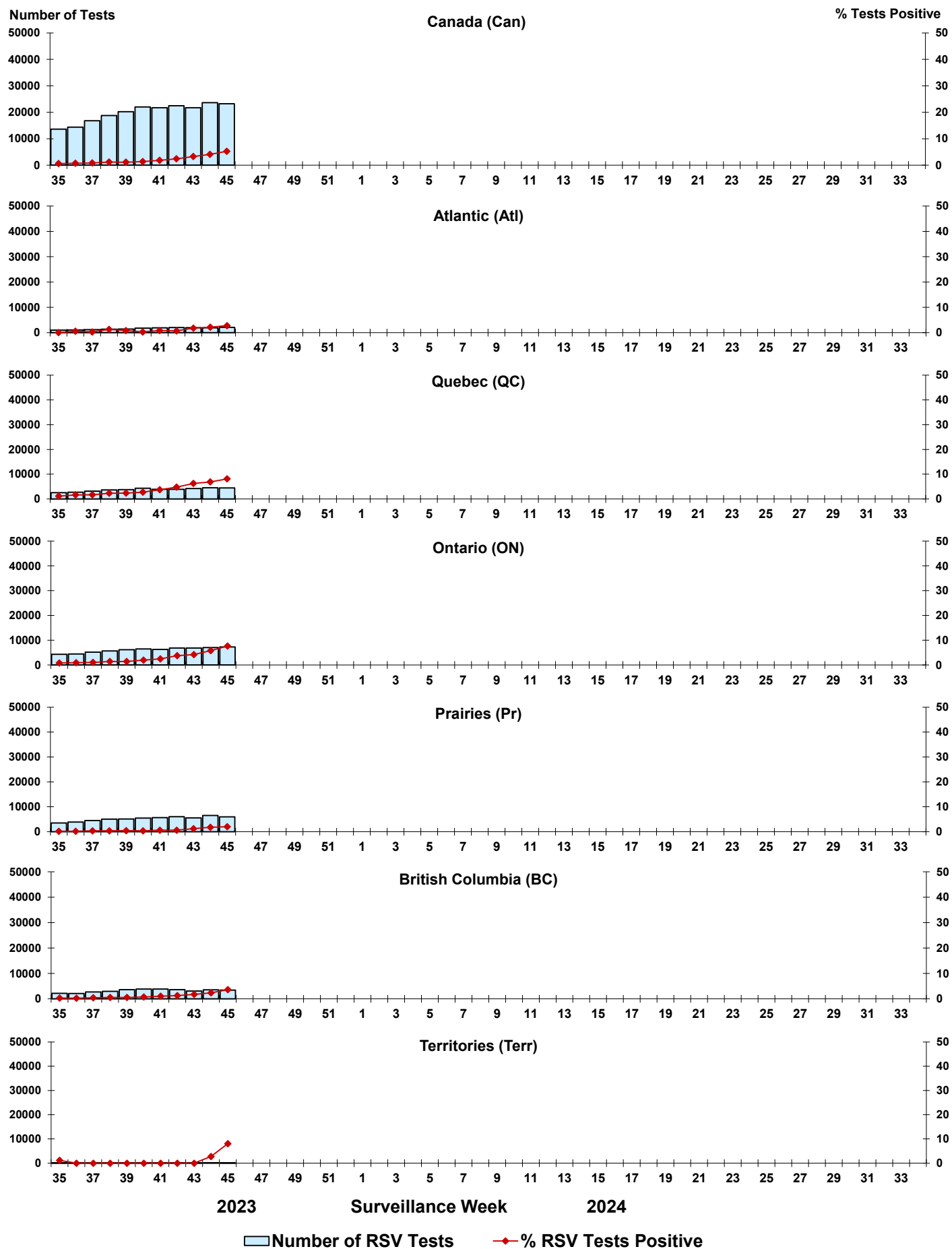




Figure 6: Positive Human parainfluenza virus (HPIV) tests (%) in Canada by region by surveillance week

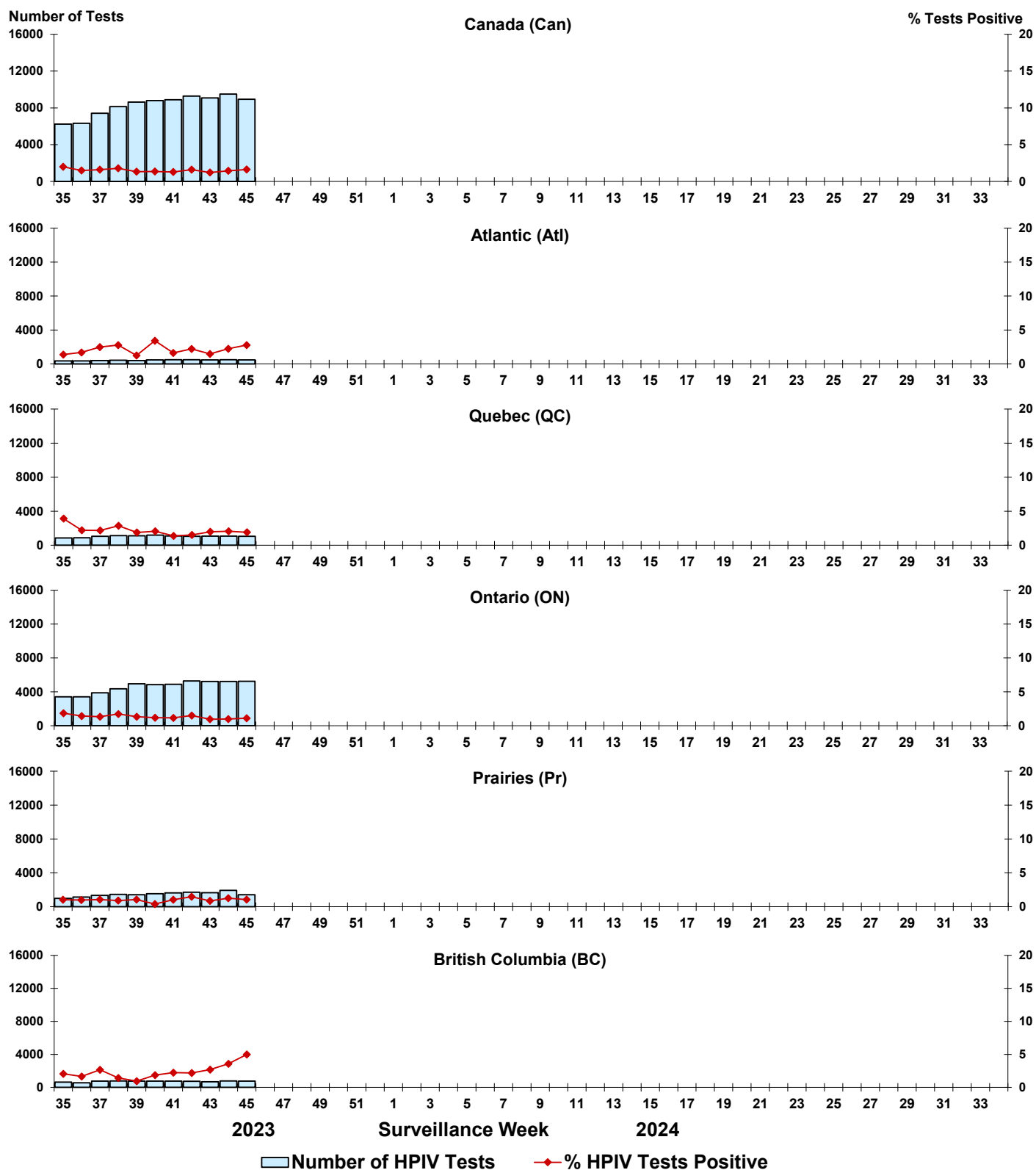


Figure 7: Positive Adenovirus (ADV) tests (%) in Canada by region by surveillance week

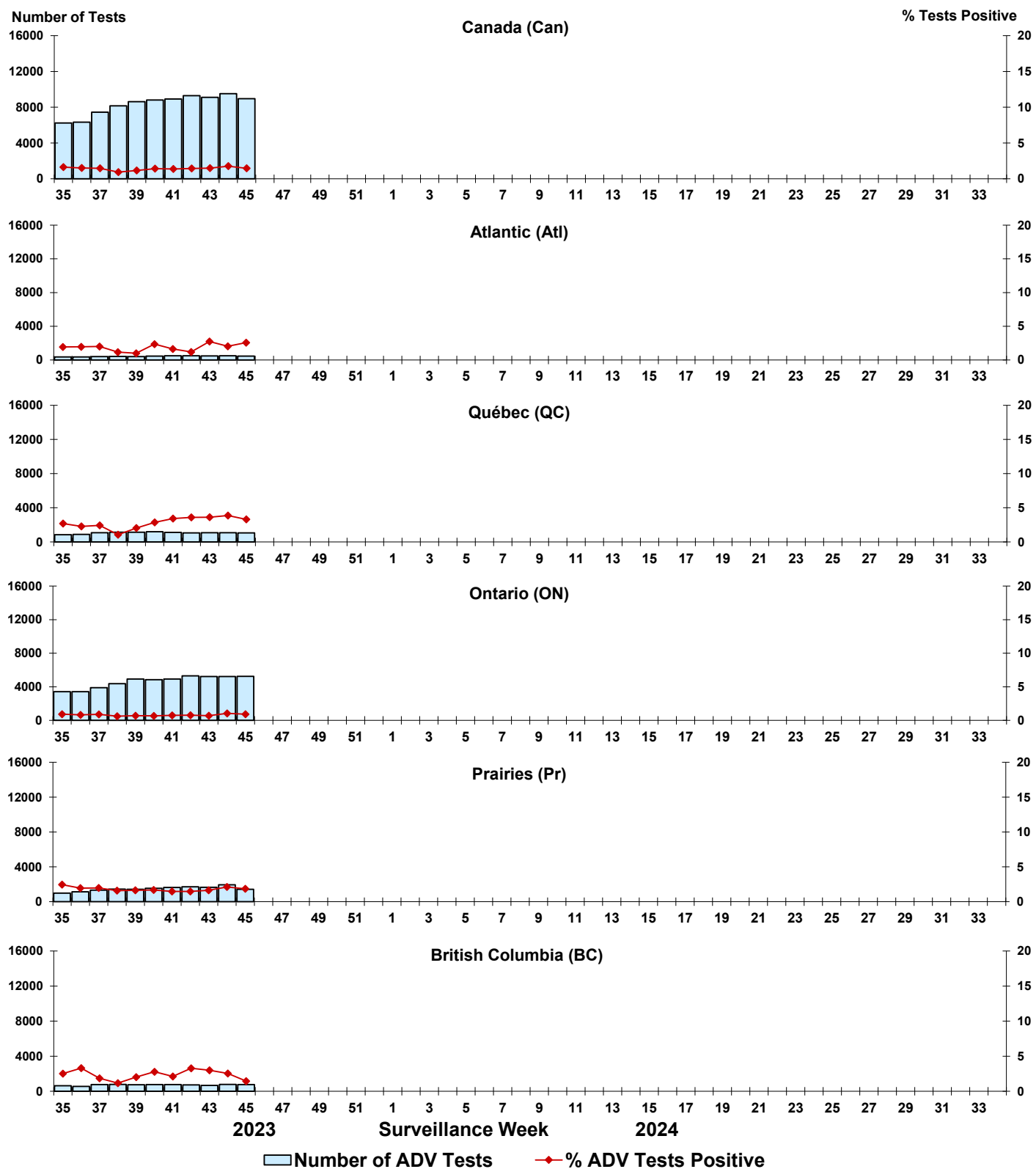


Figure 8: Positive Human metapneumovirus (HMPV) tests (%) in Canada by region by surveillance week

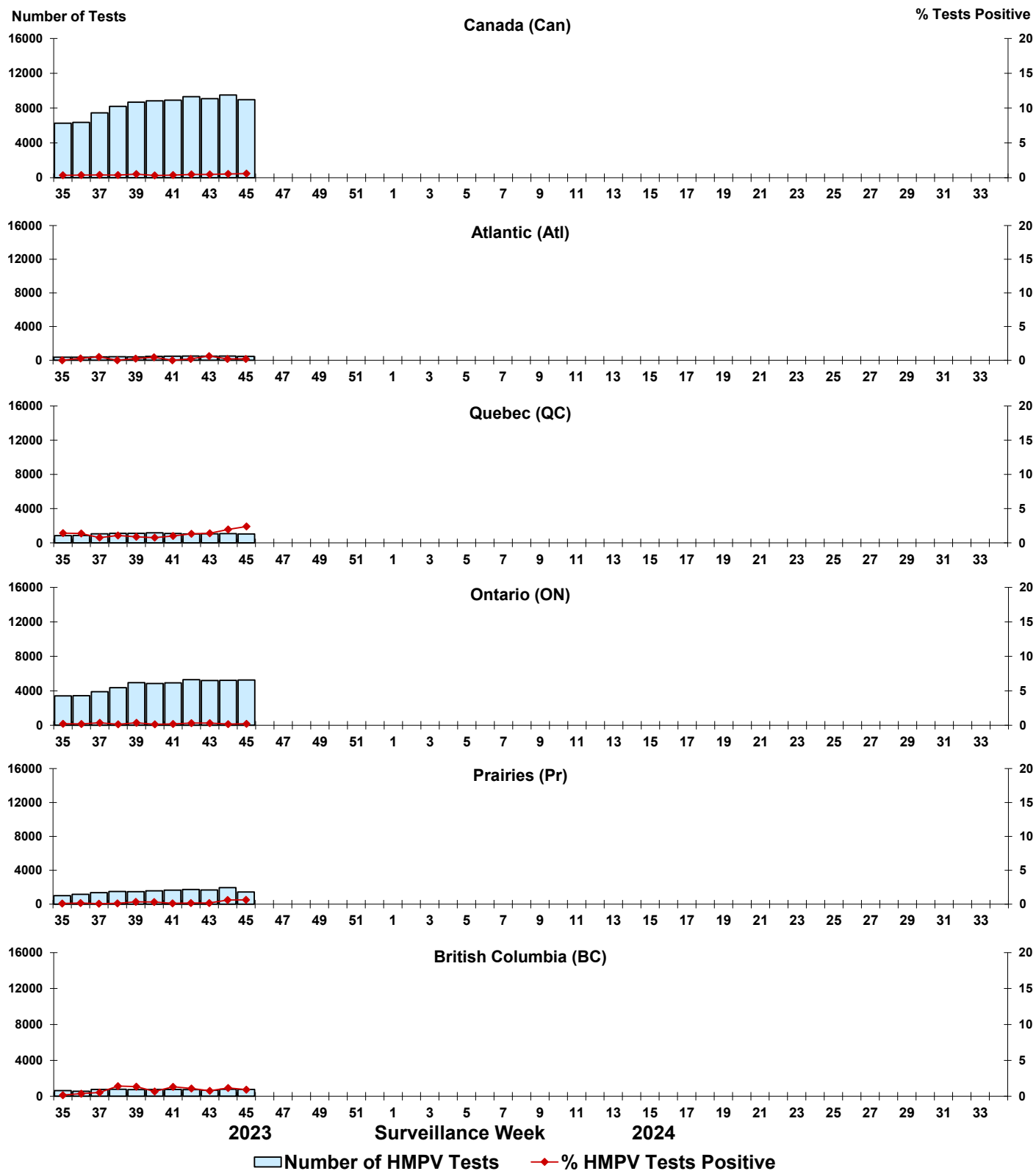


Figure 9: Positive Enterovirus/Rhinovirus (EV/RV) tests (%) in Canada by region by surveillance week

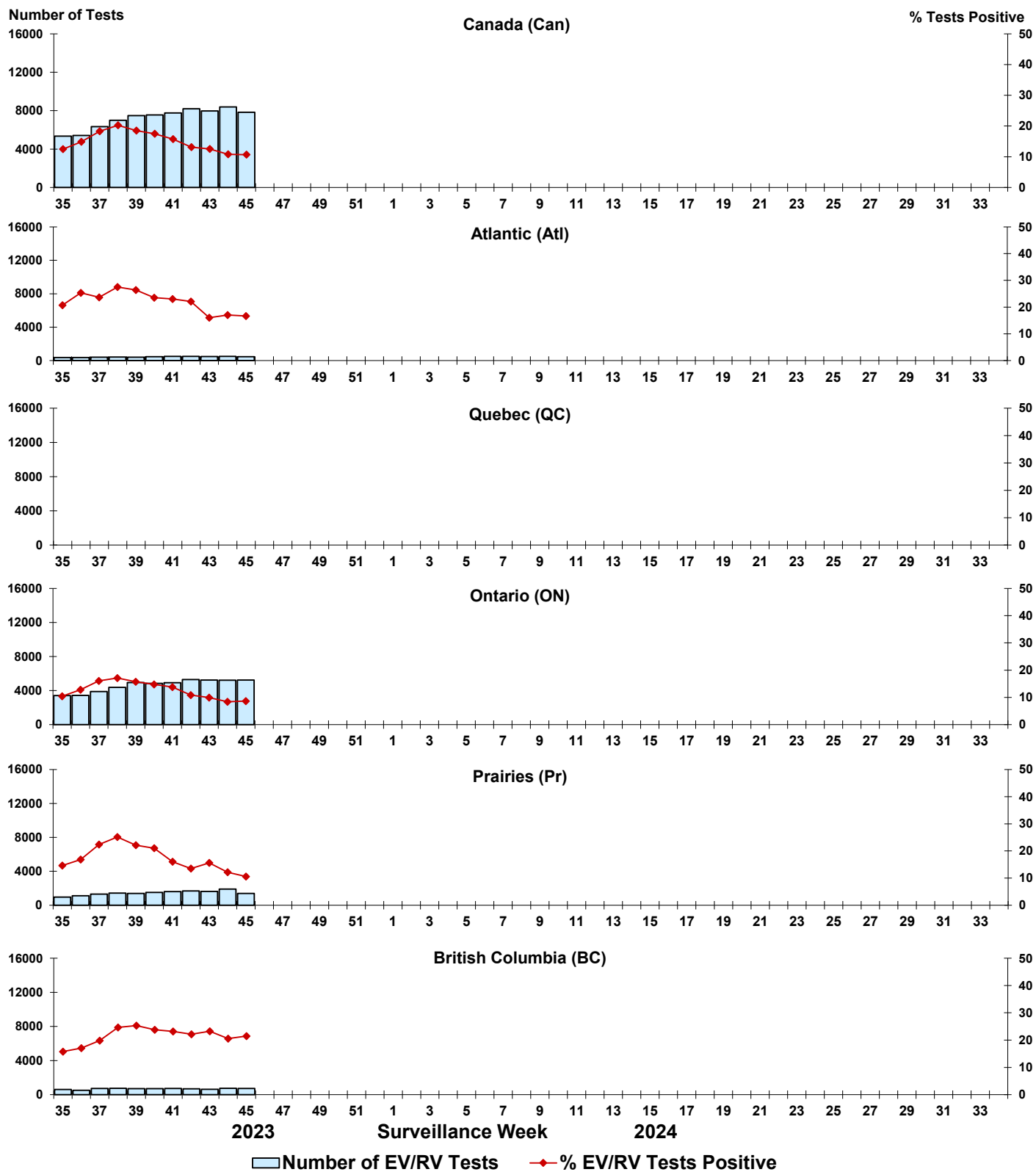


Figure 10: Positive Human coronavirus (HCoV) tests (%) in Canada by region by surveillance week

