

# WEST NILE VIRUS AND OTHER MOSQUITO-BORNE DISEASE NATIONAL SURVEILLANCE REPORT

AUG 30 TO SEPT 5, 2015 – REPORT WEEK 35

## CANADA

### HUMANS

During surveillance week 35, ending on Sept 5, 2015, three (3) human clinical cases of West Nile virus were reported to the Public Health Agency of Canada (the Agency). Of these, two cases were reported in Ontario (Middlesex-London and Halton Region) and one case in Manitoba (Southern Region). Additionally, one asymptomatic infection was reported in Quebec (Montérégie).

As of surveillance week 35, a total of 15 human clinical cases have been reported to the Agency: Quebec (4), Ontario (10), and Manitoba (1). Of these, four (27%) were classified as West Nile virus Neurological syndrome, eleven (73%) as West Nile virus Non-neurological syndrome. In addition, two asymptomatic infections have been reported in Quebec (Laval and Montérégie).

### MOSQUITOES

As of surveillance week 35, 129 mosquito pools have tested positive, for West Nile virus in Canada: Quebec (8), Ontario (76), Manitoba (29), and Saskatchewan (16).

### DEAD BIRDS

As of surveillance week 35, the [Canadian Wildlife Health Cooperative](#) has reported 29 dead birds that were tested positive for West Nile virus: Quebec (12), Ontario (16), and Saskatchewan (1).

### DOMESTIC ANIMALS

As of surveillance week 35, the [Canadian Food Inspection Agency](#) has reported 9 horses that were tested positive for West Nile virus: Ontario (3), Manitoba (1), Saskatchewan (3) and Alberta (2).

One horse from Ontario was tested positive for Eastern equine encephalitis virus.

## UNITED STATES

As of Sept 8, 2015, the [Centers for Disease Control and Prevention \(CDC\)](#) has reported a total of 493 human cases of West Nile virus:

Alabama (3), Arizona (47), Arkansas (11), California (108), Colorado (29), Delaware (1), District of Columbia (1), Florida (6), Georgia (5), Idaho (6), Illinois (5), Indiana (4), Iowa (2), Kansas (10), Louisiana (14), Maryland (17), Massachusetts (1), Mississippi (22), Missouri (7), Nebraska (22), New Jersey (7), New Mexico (2), New York (1), North Dakota (10), Ohio (13), Oklahoma (25), Pennsylvania (14), South Dakota (23), Tennessee (3), Texas (42), Virginia (6), Washington (20), Wisconsin (1) and Wyoming (4).

Of these, 272 (55.2%) were diagnosed as neuroinvasive disease cases, 221 (44.8%) as non-neuroinvasive disease cases. 15 fatal cases were reported. 133 presumptive viremic blood donors have been identified.

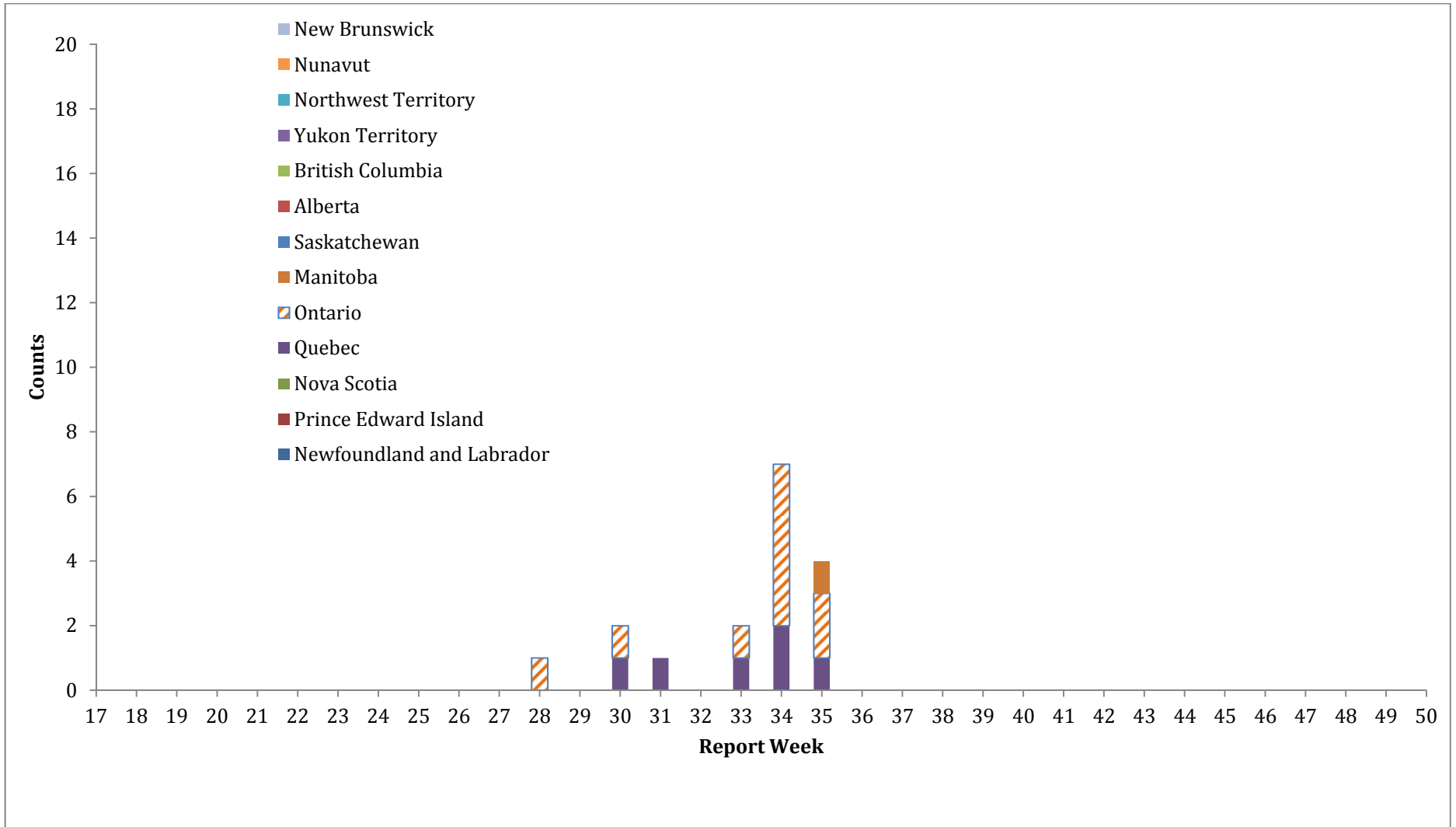
ISSN: 2368-2841



## EUROPEAN UNION, EUROPEAN ECONOMIC AREA AND NEIGHBOURING COUNTRIES

As of 11 September 2015, [the European Centre for Disease Prevention and Control](#) has reported 52 cases of West Nile fever in humans in the EU Member States: Austria, Belgium, Bulgaria, Croatia, Republic of Cyprus, Czech Republic, Denmark, Estonia, Finland, France, Germany, Greece, Hungary, Ireland, Italy, Latvia, Lithuania, Luxembourg, Malta, Netherlands, Poland, Portugal, Romania, Slovakia, Slovenia, Spain, Sweden and the UK, as well as 52 cases in the neighboring countries: Armenia, Azerbaijan, Belarus, Georgia, Moldova, Ukraine, Algeria, Egypt, Israel, Jordan, Lebanon, Libya, Morocco, Palestine, Syria and Tunisia, since the beginning of the 2015 transmission season.

FIGURE 1: West Nile Virus human clinical cases and asymptomatic infections, by Province/Territory and by report week, 2015 season





**TABLE 2:** West Nile Virus human clinical cases and asymptomatic infections by Province/Territory for the current report week and year to date, 2015 season

|                           | Week 35: Aug 30 to Sept 5, 2015       |   |                          |                                   |   |   |
|---------------------------|---------------------------------------|---|--------------------------|-----------------------------------|---|---|
|                           | West Nile virus neurological syndrome | West Nile virus non-neurological syndrome | Unclassified/unspecified | Total clinical cases <sup>1</sup> | Number of travel-related cases <sup>2</sup> | West Nile virus asymptomatic infection <sup>3</sup> |
| Newfoundland and Labrador | 0                                     | 0   | 0                        | 0                                 | 0   | 0   |
| Prince Edward Island      | 0                                     | 0   | 0                        | 0                                 | 0   | 0   |
| Nova Scotia               | 0                                     | 0   | 0                        | 0                                 | 0   | 0   |
| New Brunswick             | 0                                     | 0   | 0                        | 0                                 | 0   | 0   |
| Quebec                    | 0                                     | 0   | 0                        | 0                                 | 0   | 1   |
| Ontario                   | 0                                     | 2   | 0                        | 2                                 | 0   | 0   |
| Manitoba                  | 0                                     | 1   | 0                        | 1                                 | 0   | 0   |
| Saskatchewan              | 0                                     | 0   | 0                        | 0                                 | 0   | 0   |
| Alberta                   | 0                                     | 0   | 0                        | 0                                 | 0   | 0   |
| British Columbia          | 0                                     | 0   | 0                        | 0                                 | 0   | 0   |
| Yukon Territory           | 0                                     | 0   | 0                        | 0                                 | 0   | 0   |
| Northwest Territory       | 0                                     | 0   | 0                        | 0                                 | 0   | 0   |
| Nunavut                   | 0                                     | 0   | 0                        | 0                                 | 0   | 0   |
| Total                     | 0                                     | 3   | 0                        | 3                                 | 0   | 1   |

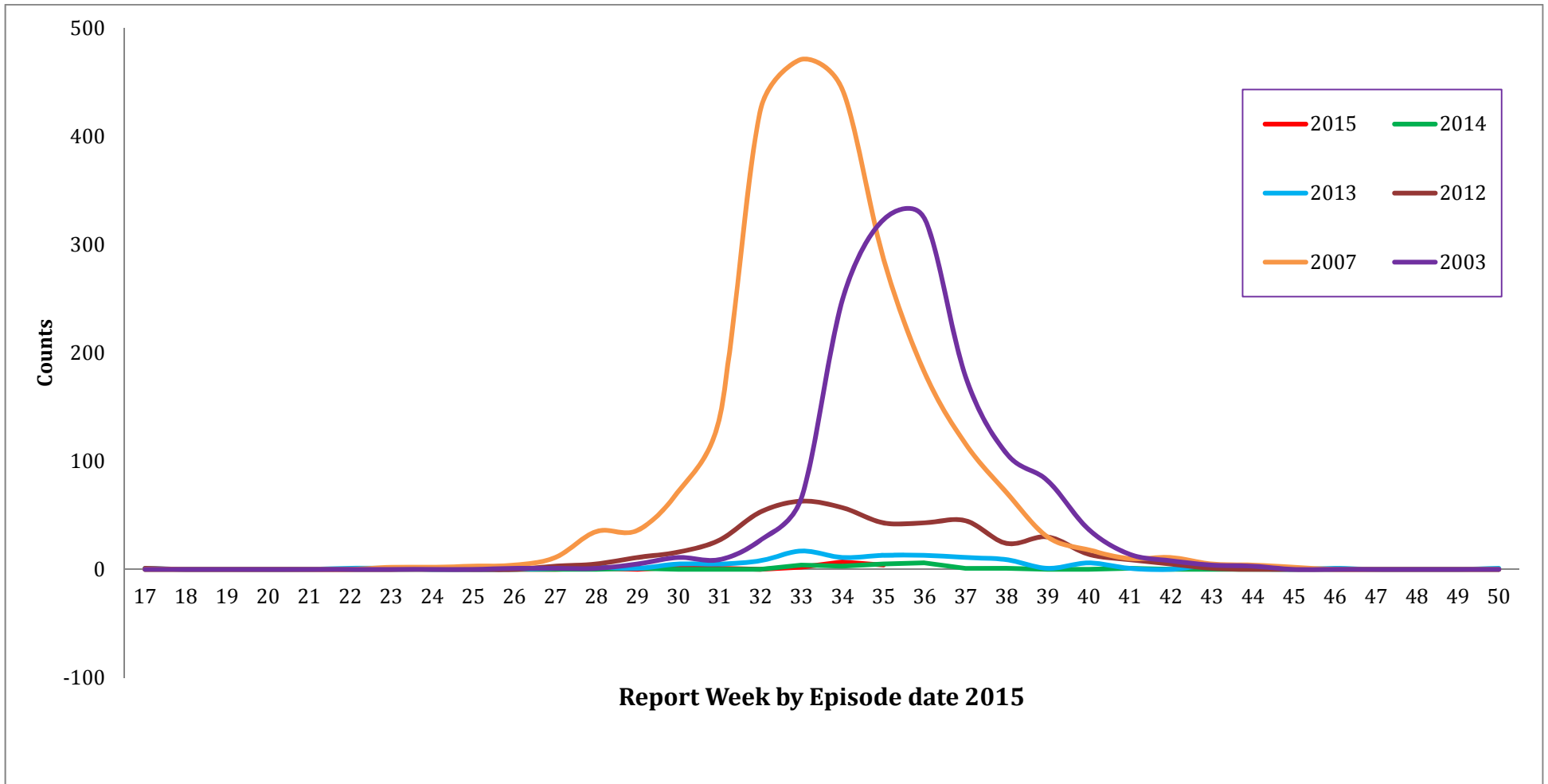
|                           | Year to date: January 1 to Sept 5, 2015 |   |                          |                                   |   |   |
|---------------------------|---|---|--------------------------|-----------------------------------|---|---|
|                           | West Nile virus neurological syndrome   | West Nile virus non-neurological syndrome | Unclassified/unspecified | Total clinical cases <sup>1</sup> | Number of travel-related cases <sup>2</sup> | West Nile virus asymptomatic infection <sup>3</sup> |
| Newfoundland and Labrador | 0                                       | 0   | 0                        | 0                                 | 0   | 0   |
| Prince Edward Island      | 0                                       | 0   | 0                        | 0                                 | 0   | 0   |
| Nova Scotia               | 0                                       | 0   | 0                        | 0                                 | 0   | 0   |
| New Brunswick             | 0                                       | 0   | 0                        | 0                                 | 0   | 0   |
| Quebec                    | 2                                       | 2   | 0                        | 4                                 | 1   | 2   |
| Ontario                   | 2                                       | 8   | 0                        | 10                                | 0   | 0   |
| Manitoba                  | 0                                       | 1   | 0                        | 1                                 | 0   | 0   |
| Saskatchewan              | 0                                       | 0   | 0                        | 0                                 | 0   | 0   |
| Alberta                   | 0                                       | 0   | 0                        | 0                                 | 0   | 0   |
| British Columbia          | 0                                       | 0   | 0                        | 0                                 | 0   | 0   |
| Yukon Territory           | 0                                       | 0   | 0                        | 0                                 | 0   | 0   |
| Northwest Territory       | 0                                       | 0   | 0                        | 0                                 | 0   | 0   |
| Nunavut                   | 0                                       | 0   | 0                        | 0                                 | 0   | 0   |
| Total                     | 4                                       | 11  | 0                        | 15                                | 1   | 2   |

<sup>1</sup> Total clinical cases is the sum of both probable and confirmed: West Nile virus neurological and non-neurological syndromes, along with any unclassified or unspecified cases.

<sup>2</sup> Likely related to travel outside the Province/Territory. These cases are included in either the total clinical cases or West Nile virus asymptomatic infections.

<sup>3</sup> Satisfies West Nile virus diagnostic test criteria in the absence of clinical criteria. This category could include asymptomatic blood donors whose blood is screened using a nucleic acid amplification test, by blood operators (i.e. Canadian Blood Services or Hema-Quebec) and is subsequently brought to the attention of public health officials. Blood operators in Canada perform a supplementary West Nile virus specific nucleic acid amplification test following any positive donor screen test result.

**FIGURE 2:** West Nile Virus clinical cases and asymptomatic infections by report week for selected years



\* West Nile virus clinical cases and asymptomatic infections are grouped by report week, based on episode date. Episode date could include one of the following: onset date, diagnosis date, lab sample date or reporting date.

**TABLE 3:** West Nile Virus clinical cases and asymptomatic infections by report week for selected years

|      | Report week |    |    |    |    |    |    |    |    |    |    |    |    |    |     |     |     |     |     |     |     |     |    |    |    |    |    |    |    |    |    |   |   |  |
|------|-------------|----|----|----|----|----|----|----|----|----|----|----|----|----|-----|-----|-----|-----|-----|-----|-----|-----|----|----|----|----|----|----|----|----|----|---|---|--|
|      | 17          | 18 | 19 | 20 | 21 | 22 | 23 | 24 | 25 | 26 | 27 | 28 | 29 | 30 | 31  | 32  | 33  | 34  | 35  | 36  | 37  | 38  | 39 | 40 | 41 | 42 | 43 | 44 | 45 | 46 | 47 |   |   |  |
| 2015 | 0           | 0  | 0  | 0  | 0  | 0  | 0  | 0  | 0  | 0  | 0  | 1  | 0  | 2  | 1   | 0   | 2   | 7   | 4   |     |     |     |    |    |    |    |    |    |    |    |    |   |   |  |
| 2014 | 0           | 0  | 0  | 0  | 0  | 0  | 0  | 0  | 0  | 0  | 0  | 0  | 1  | 0  | 0   | 0   | 4*  | 3   | 5   | 6   | 1   | 1   | 0  | 0  | 1  | 0  | 0  | 0  | 0  | 0  | 0  | 0 | 0 |  |
| 2013 | 1           | 0  | 0  | 0  | 0  | 1  | 1  | 0  | 0  | 0  | 1  | 2  | 1  | 5  | 5   | 8   | 17  | 11  | 13  | 13  | 11  | 9   | 1  | 6  | 1  | 0  | 4  | 1  | 0  | 1  | 0  | 0 |   |  |
| 2012 | 1           | 0  | 0  | 0  | 0  | 0  | 0  | 0  | 0  | 0  | 3  | 5  | 11 | 16 | 27  | 53  | 63  | 57  | 43  | 43  | 45  | 24  | 30 | 14 | 9  | 5  | 1  | 0  | 0  | 0  | 0  | 0 |   |  |
| 2007 | 0           | 0  | 0  | 0  | 0  | 0  | 2  | 2  | 3  | 4  | 11 | 35 | 36 | 72 | 139 | 424 | 471 | 443 | 287 | 182 | 116 | 71  | 30 | 18 | 10 | 11 | 5  | 4  | 2  | 0  | 0  | 0 |   |  |
| 2005 | 0           | 0  | 0  | 0  | 0  | 0  | 0  | 0  | 0  | 0  | 0  | 0  | 0  | 0  | 4   | 4   | 11  | 28  | 28  | 38  | 45  | 27  | 15 | 7  | 12 | 3  | 3  | 1  | 0  | 0  | 0  | 0 |   |  |
| 2003 | 0           | 0  | 0  | 0  | 0  | 0  | 0  | 0  | 0  | 1  | 1  | 1  | 5  | 11 | 9   | 27  | 66  | 249 | 323 | 324 | 178 | 107 | 82 | 37 | 14 | 8  | 4  | 3  | 0  | 0  | 0  | 0 |   |  |

\* One of these cases was likely exposed prior to the 2014 West Nile virus season.



**TABLE 4.1:** Number of West Nile Virus mosquito pools tested weekly by Province/Territory - 2015 season<sup>1</sup>

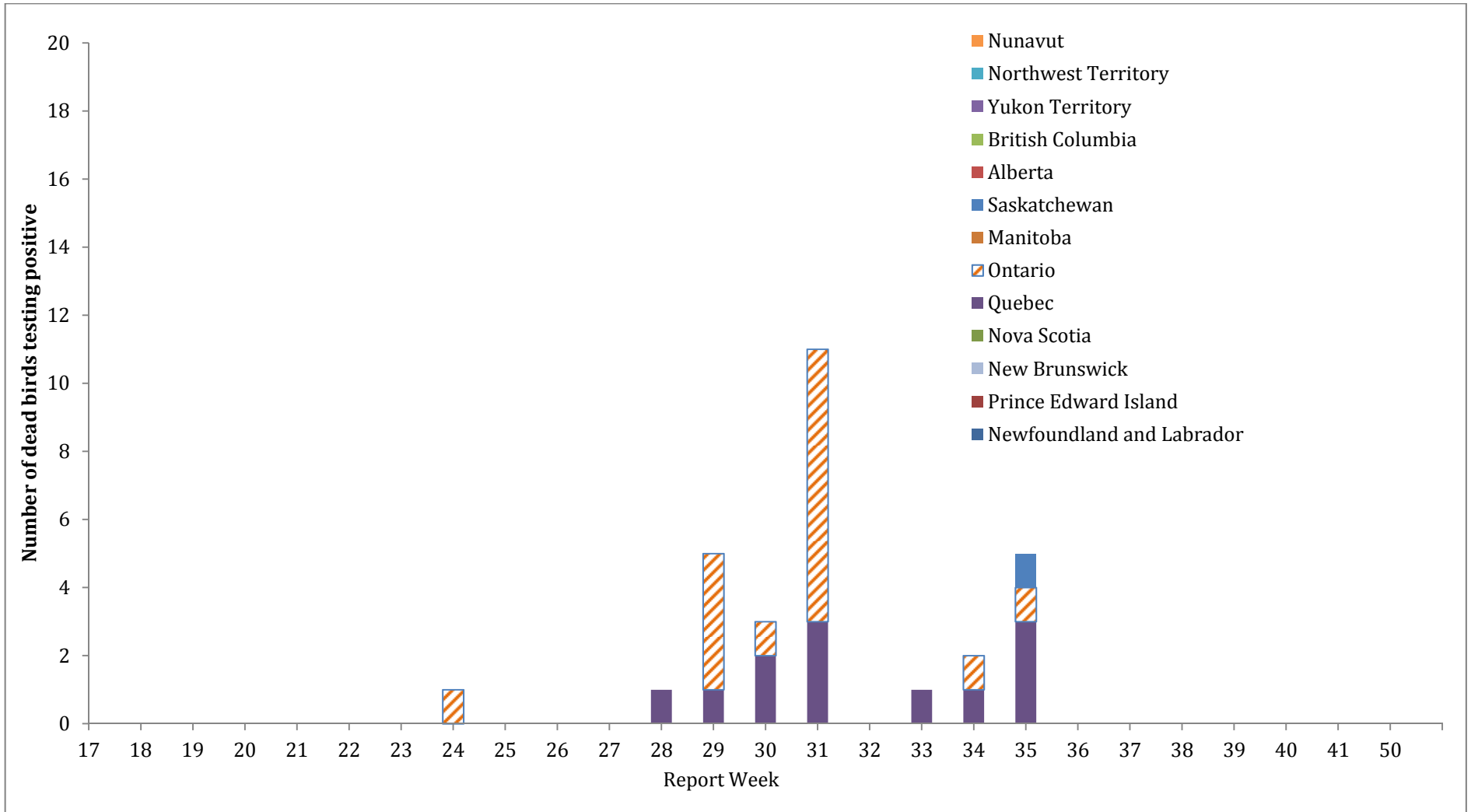
| Province / Territory      | Report week of 2015 |    |    |    |    |     |     |     |     |      |      |      |      |      |      |      |      |      |                 |    |    |    |    |    |    |    |    |    |       |
|---------------------------|---------------------|----|----|----|----|-----|-----|-----|-----|------|------|------|------|------|------|------|------|------|-----------------|----|----|----|----|----|----|----|----|----|-------|
|                           | 17                  | 18 | 19 | 20 | 21 | 22  | 23  | 24  | 25  | 26   | 27   | 28   | 29   | 30   | 31   | 32   | 33   | 34   | 35              | 36 | 37 | 38 | 39 | 40 | 41 | 42 | 43 | 44 | Total |
| Newfoundland and Labrador | 0                   | 0  | 0  | 0  | 0  | 0   | 0   | 0   | 0   | 0    | 0    | 0    | 0    | 0    | 0    | 0    | 0    | 0    | 0               |    |    |    |    |    |    |    |    |    | 0     |
| Prince Edward Island      | 0                   | 0  | 0  | 0  | 0  | 0   | 0   | 0   | 0   | 0    | 0    | 0    | 0    | 0    | 0    | 0    | 0    | 0    | 0               |    |    |    |    |    |    |    |    |    | 0     |
| New Brunswick             | 0                   | 0  | 0  | 0  | 0  | 0   | 0   | 0   | 0   | 0    | 0    | 0    | 0    | 0    | 0    | 0    | 0    | 0    | 0               |    |    |    |    |    |    |    |    |    | 0     |
| Nova Scotia               | 0                   | 0  | 0  | 0  | 0  | 0   | 0   | 0   | 0   | 0    | 0    | 0    | 0    | 0    | 0    | 0    | 0    | 0    | 0               |    |    |    |    |    |    |    |    |    | 0     |
| Quebec                    | 0                   | 0  | 0  | 0  | 0  | 0   | 0   | 0   | 0   | 120  | 127  | 132  | 131  | 129  | 126  | 133  | 125  | 109  | NA <sup>2</sup> |    |    |    |    |    |    |    |    |    | 1132  |
| Ontario                   | 0                   | 0  | 0  | 0  | 0  | 180 | 356 | 852 | 886 | 954  | 1152 | 1216 | 1219 | 1222 | 1176 | 1168 | 1168 | 987  | 881             |    |    |    |    |    |    |    |    |    | 13417 |
| Manitoba                  | 0                   | 0  | 0  | 0  | 12 | 4   | 87  | 82  | 44  | 75   | 73   | 132  | 139  | 204  | 275  | 195  | 228  | 69   | 92              |    |    |    |    |    |    |    |    |    | 1711  |
| Saskatchewan              | 0                   | 0  | 0  | 0  | 2  | 0   | 3   | 3   | 10  | 13   | 16   | 40   | 47   | 69   | 67   | 80   | 94   | 42   | 41              |    |    |    |    |    |    |    |    |    | 527   |
| Alberta                   | 0                   | 0  | 0  | 0  | 0  | 0   | 0   | 0   | 0   | 0    | 0    | 0    | 0    | 0    | 0    | 0    | 0    | 0    | 0               |    |    |    |    |    |    |    |    |    | 0     |
| British Columbia          | 0                   | 0  | 0  | 0  | 0  | 0   | 0   | 0   | 0   | 0    | 0    | 0    | 0    | 0    | 0    | 0    | 0    | 0    | 0               |    |    |    |    |    |    |    |    |    | 0     |
| Yukon Territory           | 0                   | 0  | 0  | 0  | 0  | 0   | 0   | 0   | 0   | 0    | 0    | 0    | 0    | 0    | 0    | 0    | 0    | 0    | 0               |    |    |    |    |    |    |    |    |    | 0     |
| Northwest Territory       | 0                   | 0  | 0  | 0  | 0  | 0   | 0   | 0   | 0   | 0    | 0    | 0    | 0    | 0    | 0    | 0    | 0    | 0    | 0               |    |    |    |    |    |    |    |    |    | 0     |
| Nunavut                   | 0                   | 0  | 0  | 0  | 0  | 0   | 0   | 0   | 0   | 0    | 0    | 0    | 0    | 0    | 0    | 0    | 0    | 0    | 0               |    |    |    |    |    |    |    |    |    | 0     |
| Total                     | 0                   | 0  | 0  | 0  | 14 | 184 | 446 | 937 | 940 | 1162 | 1368 | 1520 | 1536 | 1624 | 1644 | 1576 | 1615 | 1207 | 1014            |    |    |    |    |    |    |    |    |    | 16787 |

<sup>1</sup> Detailed West Nile virus mosquito surveillance data can be accessed through [Provincial/Territorial websites](#).<sup>2</sup> Not available at the time of reporting.

**TABLE 4.2:** Number of mosquito pools tested and number of positive mosquito pools by Province/Territory, 2015 season

| Province     | Year to date: January 1 to Sept 5, 2015 |                                 |   |
|--------------|---|---------------------------------|---|
|              | Number of positive mosquito pools       | Number of mosquito pools tested | Percentage of positive mosquito pools (%) |
| Quebec       | 8                                       | 1132                            | 0.71                                      |
| Ontario      | 76                                      | 13417                           | 0.57                                      |
| Manitoba     | 29                                      | 1711                            | 1.69                                      |
| Saskatchewan | 16                                      | 527                             | 3.04                                      |
| Total        | 129                                     | 16787                           | 0.77                                      |

**FIGURE 3:** Reported number of dead birds testing positive for West Nile Virus by Province/Territory and by report week, 2015 season\*



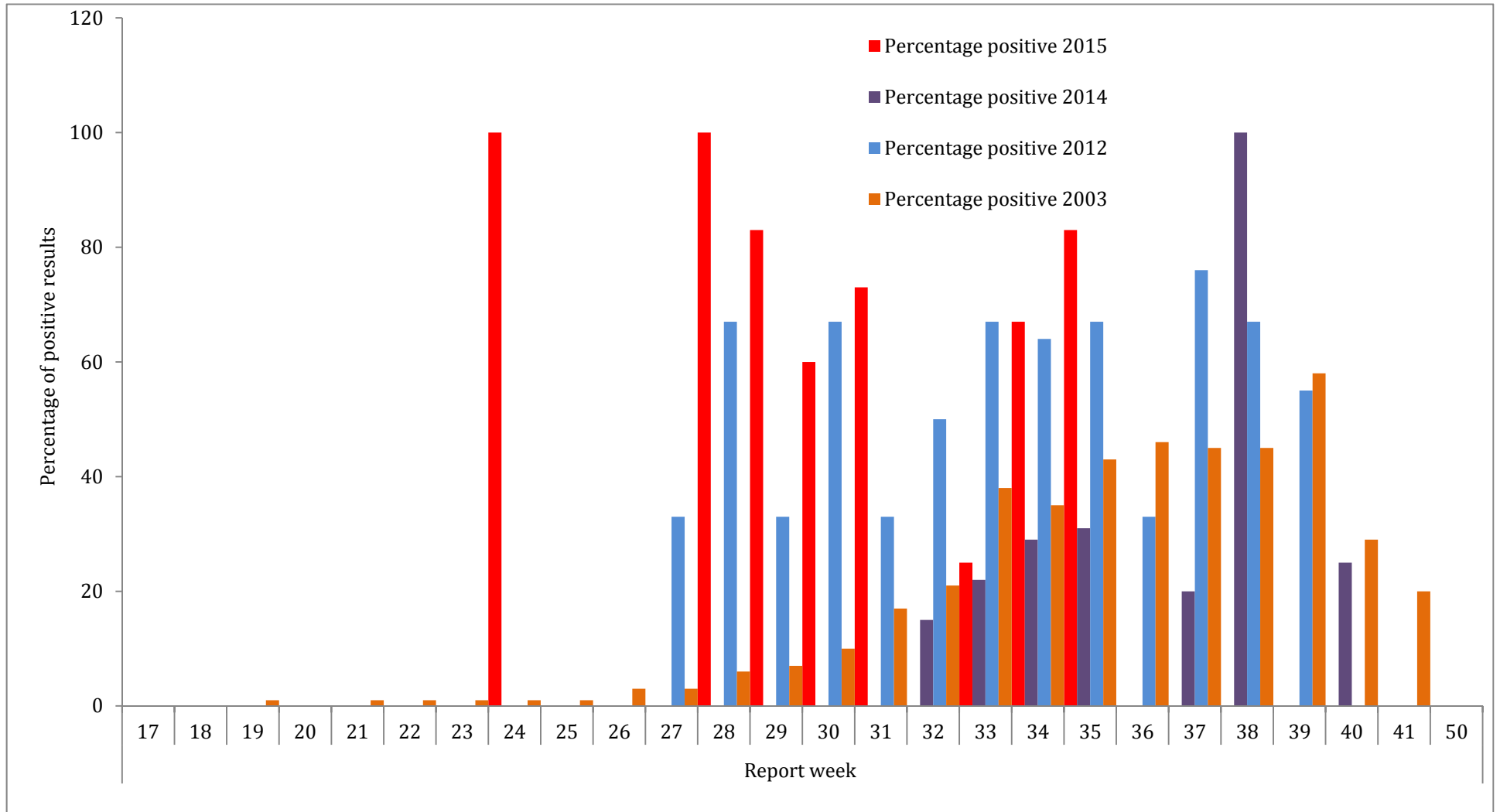
\* Data from the [Canadian Wildlife Health Cooperative](#) and the [Quebec Ministry of Health and Social Services](#)

**TABLE 5:** Reported number of dead birds testing positive for West Nile Virus by Province/Territory and by report week, 2015 season\*

|                           | Report week of 2015 |    |    |    |    |    |    |    |    |    |    |    |    |    |    |    |                |                |    |    |    |    |    |    |    |    |    |    |    |    |    |       |
|---------------------------|---------------------|----|----|----|----|----|----|----|----|----|----|----|----|----|----|----|----------------|----------------|----|----|----|----|----|----|----|----|----|----|----|----|----|-------|
|                           | 17                  | 18 | 19 | 20 | 21 | 22 | 23 | 24 | 25 | 26 | 27 | 28 | 29 | 30 | 31 | 32 | 33             | 34             | 35 | 36 | 37 | 38 | 39 | 40 | 41 | 42 | 43 | 44 | 45 | 46 | 47 | Total |
| Newfoundland and Labrador | 0                   | 0  | 0  | 0  | 0  | 0  | 0  | 0  | 0  | 0  | 0  | 0  | 0  | 0  | 0  | 0  | 0              | 0              | 0  |    |    |    |    |    |    |    |    |    |    |    |    | 0     |
| Prince Edward Island      | 0                   | 0  | 0  | 0  | 0  | 0  | 0  | 0  | 0  | 0  | 0  | 0  | 0  | 0  | 0  | 0  | 0              | 0              | 0  |    |    |    |    |    |    |    |    |    |    |    |    | 0     |
| New Brunswick             | 0                   | 0  | 0  | 0  | 0  | 0  | 0  | 0  | 0  | 0  | 0  | 0  | 0  | 0  | 0  | 0  | 0              | 0              | 0  |    |    |    |    |    |    |    |    |    |    |    |    | 0     |
| Nova Scotia               | 0                   | 0  | 0  | 0  | 0  | 0  | 0  | 0  | 0  | 0  | 0  | 0  | 0  | 0  | 0  | 0  | 0              | 0              | 0  |    |    |    |    |    |    |    |    |    |    |    |    | 0     |
| Quebec                    | 0                   | 0  | 0  | 0  | 0  | 0  | 0  | 0  | 0  | 0  | 0  | 1  | 1  | 2  | 3  | 0  | 1 <sup>1</sup> | 1 <sup>1</sup> | 3  |    |    |    |    |    |    |    |    |    |    |    |    | 12    |
| Ontario                   | 0                   | 0  | 0  | 0  | 0  | 0  | 0  | 1  | 0  | 0  | 0  | 0  | 4  | 1  | 8  | 0  | 0              | 1              | 1  |    |    |    |    |    |    |    |    |    |    |    |    | 16    |
| Manitoba                  | 0                   | 0  | 0  | 0  | 0  | 0  | 0  | 0  | 0  | 0  | 0  | 0  | 0  | 0  | 0  | 0  | 0              | 0              | 0  |    |    |    |    |    |    |    |    |    |    |    |    | 0     |
| Saskatchewan              | 0                   | 0  | 0  | 0  | 0  | 0  | 0  | 0  | 0  | 0  | 0  | 0  | 0  | 0  | 0  | 0  | 0              | 0              | 1  |    |    |    |    |    |    |    |    |    |    |    |    | 1     |
| Alberta                   | 0                   | 0  | 0  | 0  | 0  | 0  | 0  | 0  | 0  | 0  | 0  | 0  | 0  | 0  | 0  | 0  | 0              | 0              | 0  |    |    |    |    |    |    |    |    |    |    |    |    | 0     |
| British Columbia          | 0                   | 0  | 0  | 0  | 0  | 0  | 0  | 0  | 0  | 0  | 0  | 0  | 0  | 0  | 0  | 0  | 0              | 0              | 0  |    |    |    |    |    |    |    |    |    |    |    |    | 0     |
| Yukon Territory           | 0                   | 0  | 0  | 0  | 0  | 0  | 0  | 0  | 0  | 0  | 0  | 0  | 0  | 0  | 0  | 0  | 0              | 0              | 0  |    |    |    |    |    |    |    |    |    |    |    |    | 0     |
| Northwest Territory       | 0                   | 0  | 0  | 0  | 0  | 0  | 0  | 0  | 0  | 0  | 0  | 0  | 0  | 0  | 0  | 0  | 0              | 0              | 0  |    |    |    |    |    |    |    |    |    |    |    |    | 0     |
| Nunavut                   | 0                   | 0  | 0  | 0  | 0  | 0  | 0  | 0  | 0  | 0  | 0  | 0  | 0  | 0  | 0  | 0  | 0              | 0              | 0  |    |    |    |    |    |    |    |    |    |    |    |    | 0     |
| Total                     | 0                   | 0  | 0  | 0  | 0  | 0  | 0  | 1  | 0  | 0  | 0  | 1  | 5  | 3  | 11 | 0  | 1              | 2              | 5  |    |    |    |    |    |    |    |    |    |    |    |    | 29    |

\* Data from the [Canadian Wildlife Health Cooperative](#).<sup>1</sup>Data from the Quebec Ministry of Health and Social Services

**FIGURE 4:** Percentage of dead birds testing positive for West Nile Virus in the 2015 season by report week, as compared to the 2003, 2012 and 2014 seasons



**TABLE 6:** Percentage of dead birds testing positive for West Nile Virus in the 2015 season by report week, as compared to the 2003, 2012 and 2014 seasons

|                     |      | Report week |    |    |    |    |    |    |     |    |    |    |     |     |    |    |    |    |    |    |    |     |    |    |    |    |    |    |    |    |    |    |  |
|---------------------|------|-------------|----|----|----|----|----|----|-----|----|----|----|-----|-----|----|----|----|----|----|----|----|-----|----|----|----|----|----|----|----|----|----|----|--|
|                     |      | 17          | 18 | 19 | 20 | 21 | 22 | 23 | 24  | 25 | 26 | 27 | 28  | 29  | 30 | 31 | 32 | 33 | 34 | 35 | 36 | 37  | 38 | 39 | 40 | 41 | 42 | 43 | 44 | 45 | 46 | 47 |  |
| Numbers positive    | 2015 | 0           | 0  | 0  | 0  | 0  | 0  | 0  | 1   | 0  | 0  | 0  | 1   | 5   | 3  | 11 | 0  | 1  | 2  | 5  |    |     |    |    |    |    |    |    |    |    |    |    |  |
| Numbers tested      | 2015 | 0           | 0  | 0  | 0  | 0  | 0  | 0  | 1   | 0  | 0  | 1  | 1   | 6   | 5  | 15 | 7  | 4  | 3  | 6  |    |     |    |    |    |    |    |    |    |    |    |    |  |
| Percentage positive | 2015 | 0           | 0  | 0  | 0  | 0  | 0  | 0  | 100 | 0  | 0  | 0  | 100 | 83  | 60 | 73 | 0  | 25 | 67 | 83 |    |     |    |    |    |    |    |    |    |    |    |    |  |
| Numbers positive    | 2014 | 0           | 0  | 0  | 0  | 0  | 0  | 0  | 0   | 0  | 0  | 0  | 0   | 0   | 0  | 2  | 2  | 2  | 4  | 0  | 2  | 3   | 0  | 1  | 0  | 0  | 0  | 0  | 0  | 0  | 0  | 0  |  |
| Numbers tested      | 2014 | 0           | 0  | 0  | 0  | 0  | 0  | 0  | 0   | 0  | 0  | 0  | 0   | 41* | 10 | 13 | 9  | 7  | 13 | 6  | 10 | 3   | 1  | 4  | 2  | 1  | 0  | 0  | 0  | 0  | 0  | 0  |  |
| Percentage positive | 2014 | 0           | 0  | 0  | 0  | 0  | 0  | 0  | 0   | 0  | 0  | 0  | 0   | 0   | 0  | 15 | 22 | 29 | 31 | 0  | 20 | 100 | 0  | 25 | 0  | 0  | 0  | 0  | 0  | 0  | 0  | 0  |  |
| Percentage positive | 2012 | 0           | 0  | 0  | 0  | 0  | 0  | 0  | 0   | 0  | 0  | 33 | 67  | 33  | 67 | 33 | 50 | 67 | 64 | 67 | 33 | 67  | 67 | 55 | 0  | 0  | 0  | 0  | 0  | 0  | 0  | 0  |  |
| Percentage positive | 2003 | 0           | 0  | 1  | 0  | 1  | 1  | 1  | 1   | 1  | 3  | 3  | 6   | 7   | 10 | 17 | 21 | 38 | 35 | 43 | 46 | 45  | 45 | 58 | 29 | 20 | 15 | 8  | 0  | 0  | 0  | 0  |  |

\* Data became available during Week 30; this is a cumulative number of dead birds tested from Week 1 to Week 30.