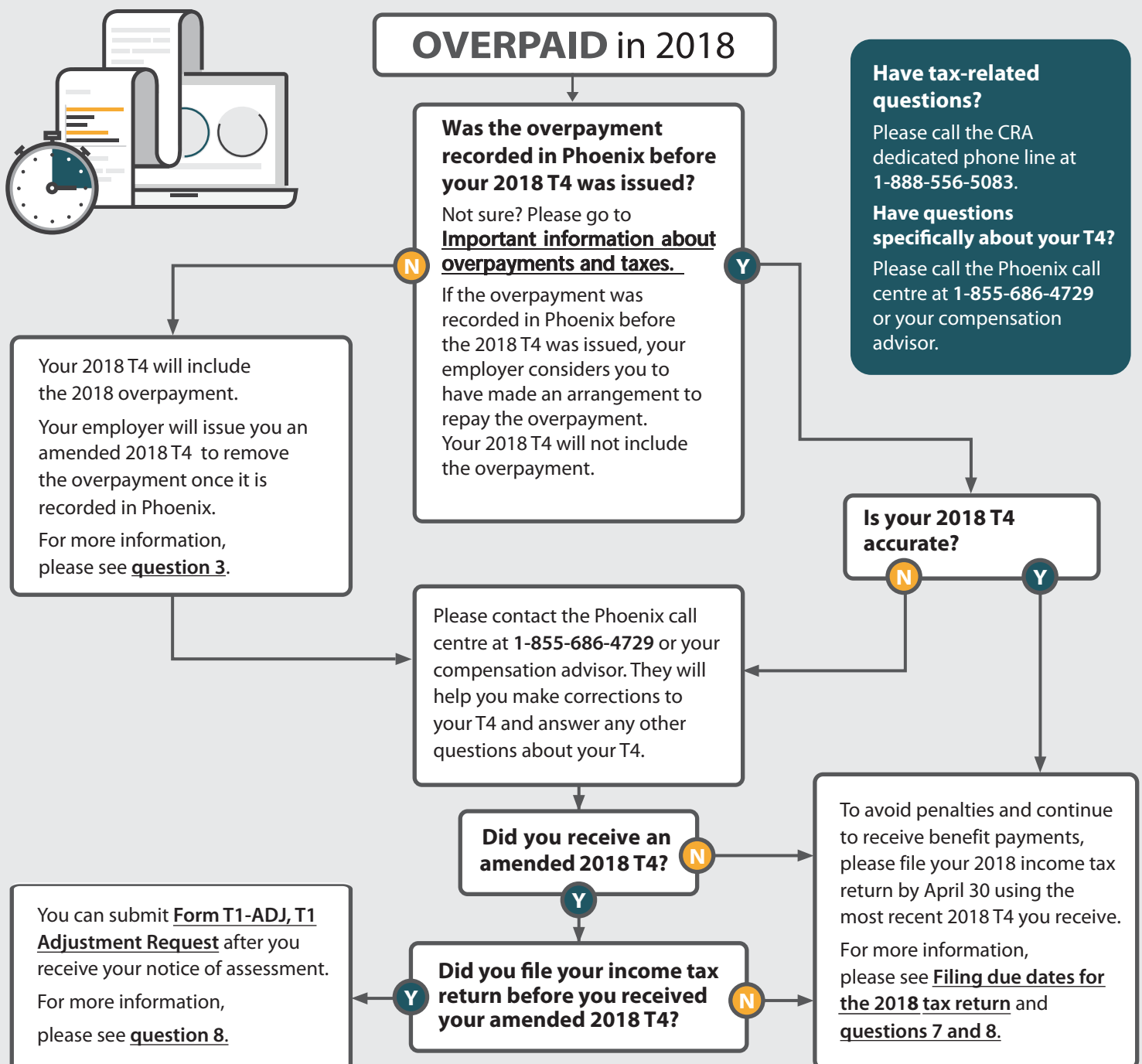




# OVERPAID in 2018?

Affected by Phoenix payroll issues? The Government of Canada has prepared this decision tree to help you during this tax filing season.

For tax questions, see [canada.ca/taxes-phoenix](https://canada.ca/taxes-phoenix). For tax slips questions, see [canada.ca/gc-pay](https://canada.ca/gc-pay).



## Have tax-related questions?

Please call the CRA dedicated phone line at 1-888-556-5083.

## Have questions specifically about your T4?

Please call the Phoenix call centre at 1-855-686-4729 or your compensation advisor.

▶ If you have out-of-pocket expenses because of incomplete or inaccurate pay, you can submit a claim under the Phoenix claims process.

Please note that Revenu Québec will use the same approach if you work in Quebec and received a RL-1 slip.