



# Seasonal Outlook

Gulf of St Lawrence, East Newfoundland  
Waters and Labrador Coast  
Winter 2020-2021

Issued by Canadian Ice Service of Environment and  
Climate Change Canada  
1 December 2020



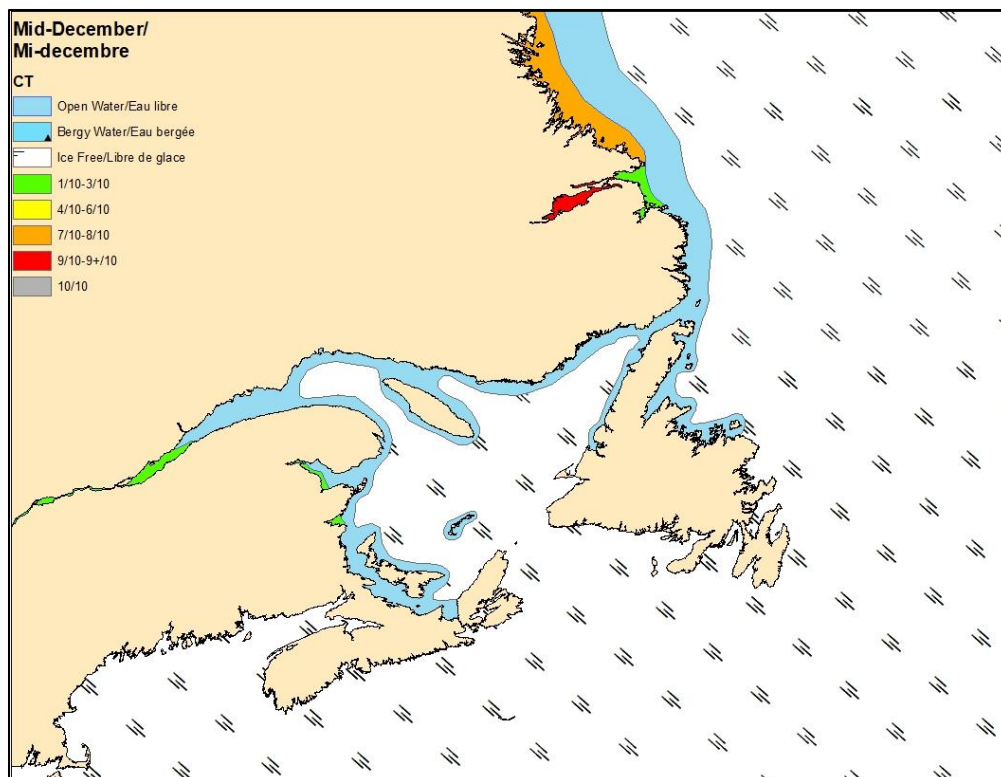


Figure 1: Expected ice conditions – mid-December 2020

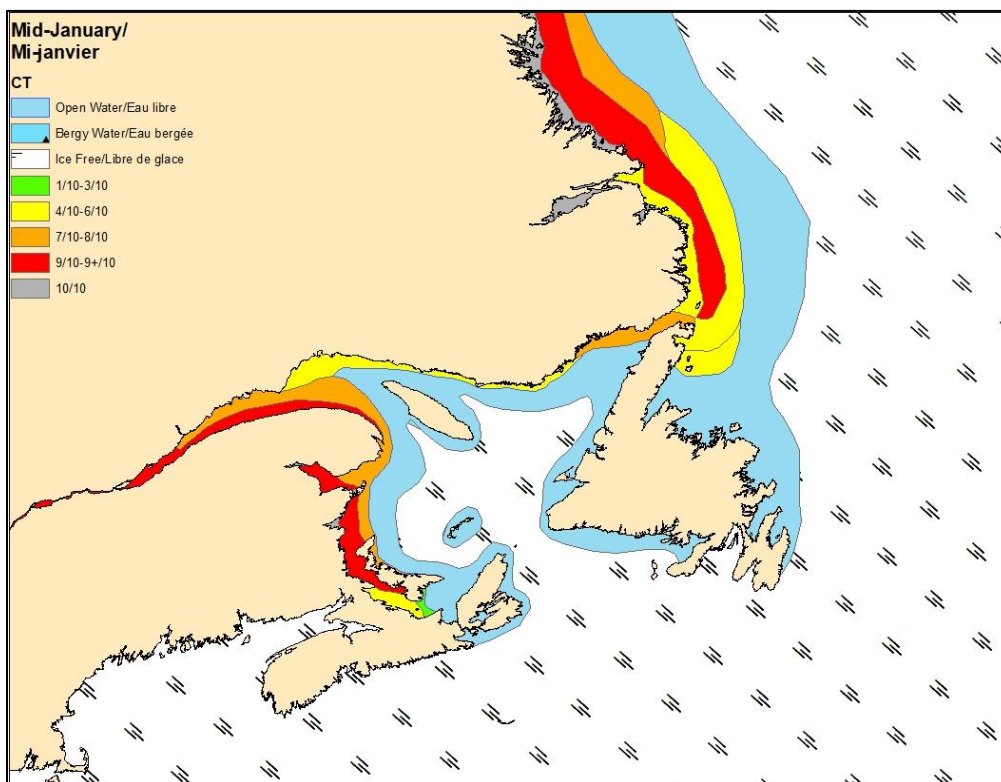


Figure 2: Expected ice conditions – mid-January 2021

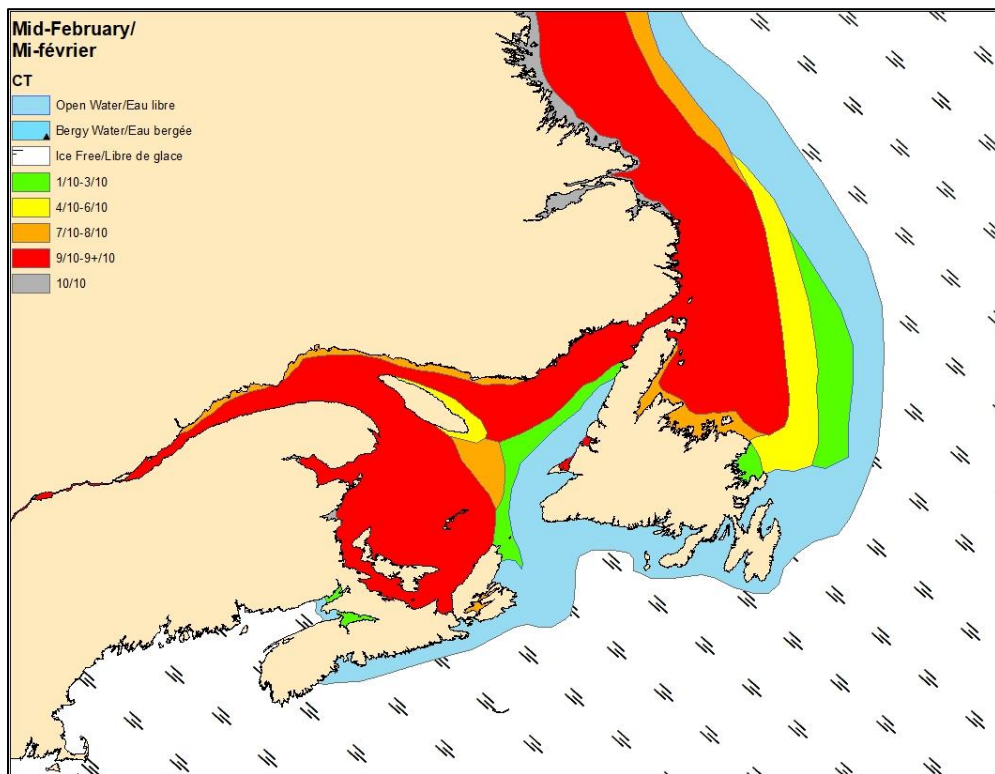


Figure 3: Expected ice conditions – mid-February 2021

## **Gulf of St-Lawrence**

### **Winter temperature and ice forecasts**

The surface air temperature is expected to be above normal for the December-February period for the Gulf. Ice conditions are expected to be below normal.

### **The Estuary.**

Outlook for December...

December 1-10: Open water.

December 11-20: Open water except 1-3 tenths new and grey ice along parts of the shore in the western section.

December 21-31: Open water except 4-6 tenths new and grey ice in the western section.

Outlook for January...

January 1-10: 1-3 tenths new and grey ice except 7-8 tenths grey ice over the western section.

January 11-20: 4-6 tenths new and grey ice except 7-8 tenths new and grey ice along the northern shore. 9-9+ tenths grey and grey-white ice along the southern shore.

January 21-31: 7-8 tenths new and grey ice except 9-9+ tenths grey and grey-white ice over the western section and along the southern shore.

Outlook for February...

February 1-14: 7-8 tenths grey and grey-white ice except 9-9+ tenths grey-white and first-year ice over the western section.

February 15-28: 9-9+ tenths grey-white and first-year ice.

### **Chaleur Bay southward to Northumberland Strait.**

Outlook for December...

December 1-10: Open water.

December 11-24: Open water except 1-3 tenths new ice in southern Chaleur Bay and near Miramichi. 7-8 tenths new and grey ice in sheltered bays and inlets.

December 25-31: Open water except 1-3 tenths new and grey ice along the coast. 9-9+ tenths grey ice in sheltered bays and inlets.

Outlook for January...

January 1-10: 1-3 tenths new and grey ice except 7-8 tenths new and grey ice near the shore and in Northumberland Strait. Consolidated grey and grey-white ice in sheltered bays and inlets.

January 11-20: 7-8 tenths new and grey ice except 7-8 tenths grey and grey-white ice in Chaleur Bay and Northumberland Strait. Consolidated grey-white ice in sheltered bays and inlets.

January 21-31: 9-9+ tenths grey and grey-white ice except 9-9+ tenths grey-white ice in Northumberland Strait. Consolidated first-year ice in sheltered bays and inlets.

Outlook for February...

February 1-28: 9-9+ tenths grey and grey-white ice except 9-9+ tenths grey-white and first-year ice in Chaleur Bay and Northumberland Strait. Consolidated first-year ice in sheltered bays and inlets.

### **West coast of Newfoundland.**

Outlook for December...

December 1-31: Open water.

Outlook for January...

January 1-10: Open water except occasional patches of 1-3 tenths new and grey ice in sheltered bays and inlets.

January 11-20: Open water except consolidated grey ice in sheltered bays and inlets.

January 21-31: Open water except 7-8 tenths new and grey ice along the coast in the extreme northern section and near the Port au Port peninsula. Consolidated grey-white ice in sheltered bays and inlets.

Outlook for February...

February 1-14: Open water except 7-8 tenths grey and grey-white ice in the northern section. 9-9+ tenths new and grey ice along parts of the coast. Consolidated grey-white ice in sheltered bays and inlets.

February 15-28: 1-3 tenths grey and grey-white ice except 9-9+ tenths grey and grey-white ice in the northern section and along parts of the coast. Consolidated grey-white ice in sheltered bays in inlets.

### **North Shore of Quebec.**

Outlook for December...

December 1-20: Open water except occasional patches of 1-3 tenths new ice along the shore.

December 21-31: Open water except 1-3 tenths new and grey ice along the shore.

Consolidated grey ice in sheltered bays and inlets.

Outlook for January...

January 1-10: Open water except 1-3 tenths new and grey ice along the shore. 4-6 tenths new and grey ice along the shore east of Natashquan. Consolidated grey-white ice in sheltered bays and inlets.

January 11-20: Open water except 4-6 tenths new and grey ice along the shore. 7-8 tenths grey and grey-white ice along the shore east of La Tabatière. Consolidated grey-white ice in sheltered bays and inlets.

January 21-31: Open water except 9-9+ tenths grey and grey-white ice extending 20-30 nautical miles from shore. Consolidated grey-white and first-year ice in sheltered bays and inlets.

Outlook for February...

February 1-14: 9-9+ tenths grey and grey-white ice. Consolidated first-year ice in sheltered bays and inlets.

February 15-28: 9-9+ tenths grey-white and first-year ice. Consolidated first-year ice in sheltered bays and inlets.

### **Elsewhere.**

Outlook for December...

December 1-15: Ice free to open water.

December 16-31: Ice free to open water except isolated areas of new and grey ice near the Îles de la Madeleine and in sheltered bays along the north shore of Prince Edward Island and along Anticosti Island.

Outlook for January...

January 1-10: Ice free to open water except isolated areas of new and grey ice near the Îles de la Madeleine and in sheltered bays along the north shore of Prince Edward Island and along Anticosti Island.

January 11-20: Ice free to open water except isolated areas of 4-6 tenths new and grey ice near Anticosti Island and the Îles de la Madeleine. 7-8 tenths new and grey ice along the north shore of Prince Edward Island.

January 21-31: Open water except 7-8 tenths grey and grey-white ice near the Îles de la Madeleine and along sections of Anticosti Island. 7-8 tenths new and grey ice west of the Îles de la Madeleine.

Outlook for February...

February 1-14: 1-3 tenths new and grey ice except 9-9+ tenths grey and grey-white ice near the Îles de la Madeleine and northward and westward.

February 15-28: 7-8 tenths grey ice except 9-9+ tenths grey-white and first-year ice near the Îles de la Madeleine and northward and westward.

## **East Newfoundland Waters and Labrador Coast.**

### **Winter temperature and ice forecasts.**

Average air temperatures are expected to be above normal for December to February over the East Newfoundland Waters. Near normal temperatures are forecast along the Labrador coast. Near normal ice conditions are forecast.

### **Labrador Coast and Strait of Belle Isle.**

Outlook for December...

December 1-20: Bergy water except 4-6 tenths new and grey ice along the coast near Cartwright and northward.

December 21-31: Bergy water except 7-8 tenths grey and grey-white ice extending 20 nautical miles from the coast near Mary's Harbour and northward along the coast. 1-3 tenths new and grey ice in the Strait of Belle Isle.

Outlook for January...

January 1-15: 9-9+ tenths grey-white and first-year ice extending 60 nautical miles from the coast from Mary's Harbour and northward. 7-8 tenths grey and grey-white ice extending south of Mary's Harbour and into the Strait of Belle Isle.

January 16-31: 9-9+ tenths grey-white and first-year ice extending 100 nautical miles from the coast from Mary's and northward. 9-9+ tenths grey and grey-white ice south from Mary's Harbour to the Strait of Belle Isle.

Outlook for February...

February 1-14: 9-9+ tenths first-year ice extending 120 nautical miles from the Labrador coast. 9-9+ tenths grey and grey-white ice in the Strait of Belle Isle.

February 15-28: 9-9+ tenths first-year ice extending 120 nautical miles from the Labrador coast. 9-9+ tenths first-year ice in the Strait of Belle Isle.

### **Lake Melville.**

Outlook for December...

December 1-7: 7-8 tenths new and grey ice.

December 8-15: 9-9+ tenths grey and grey white ice.

December 16-31: 9-9+ tenths grey-white ice. Consolidated grey-white ice in the western section.

Outlook for January...

January 1-31: Consolidated first-year ice.

Outlook for February:

February 1-28: Consolidated first-year ice.

### **Newfoundland.**

Outlook for December...

December 1-15: Open water to ice free.

December 16-31: Open water to ice free except 4-6 tenths new and grey ice in isolated bays and inlets.

Outlook for January...

January 1-10: Open water except 1-3 tenths new and grey ice near the tip of the Northern peninsula. Consolidated grey ice in sheltered bays and inlets along the coast.

January 11-20: Open water except 4-6 tenths new and grey ice along the Northern Peninsula north of Englee. Consolidated grey and grey-white ice in sheltered bays and inlets.

January 21-31: 7-8 tenths grey and grey-white ice east of the Northern peninsula and more than 50 nautical miles from the Northeast Coast. Consolidated grey-white ice in sheltered bays and inlets.

Outlook for February...

February 1-14: 9-9+ tenths grey and grey-white ice extending from the Northern Peninsula to Cape Freels and northward. Consolidated grey-white ice in sheltered bays and inlets.

February 15-28: 9-9+ tenths grey-white and first-year ice extending 150 nautical miles from the coast from Cape Freels and northwards. 1-3 tenths grey and grey-white ice in and northeast of Bonavista Bay. Consolidated first-year ice in sheltered bays and inlets.