



# Seasonal Outlook

Gulf of St Lawrence, East Newfoundland  
Waters and Labrador Coast  
Winter 2021-2022

Issued by Canadian Ice Service of Environment and  
Climate Change Canada  
1 December 2021



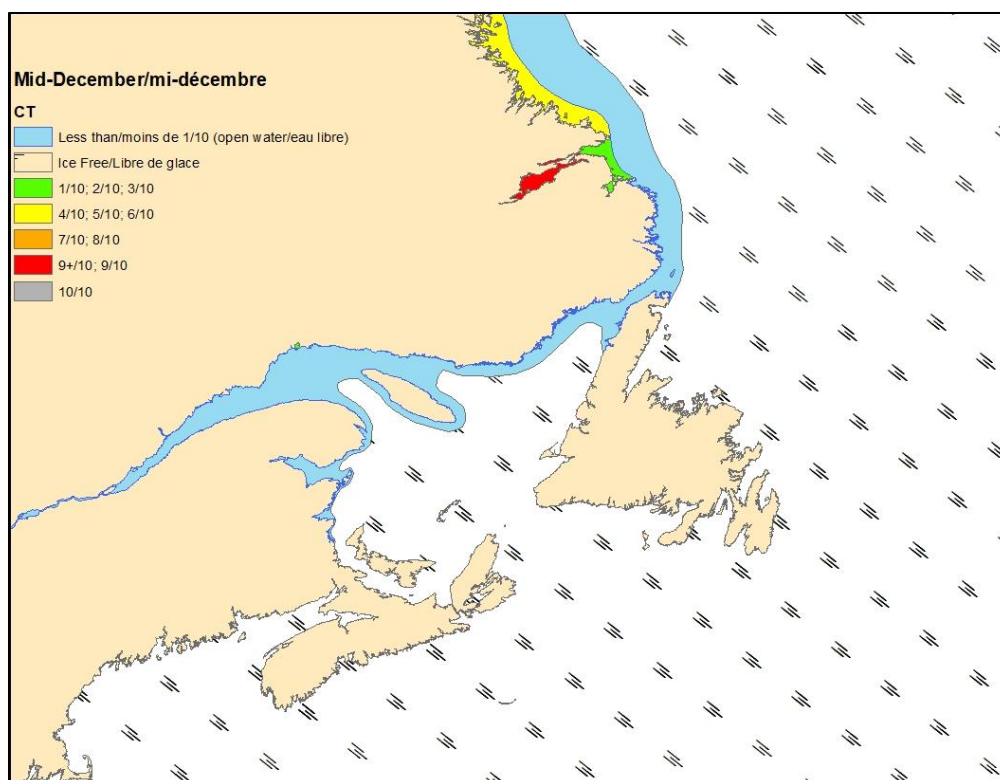


Figure 1: Expected ice conditions – mid-December 2021

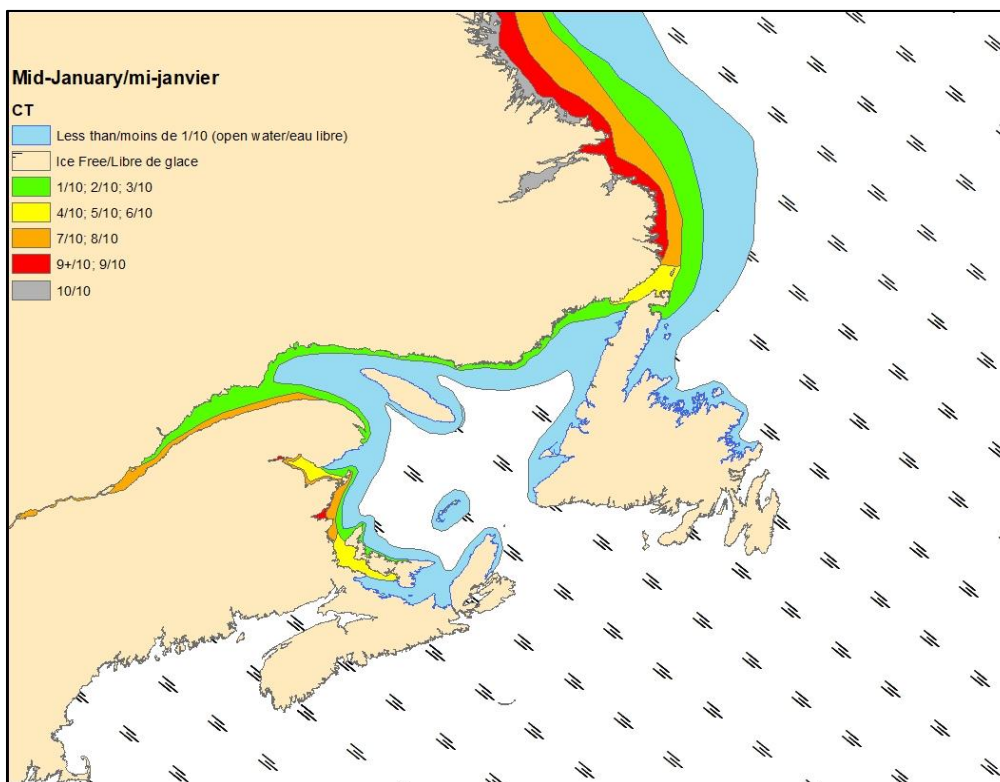


Figure 2: Expected ice conditions – mid-January 2022

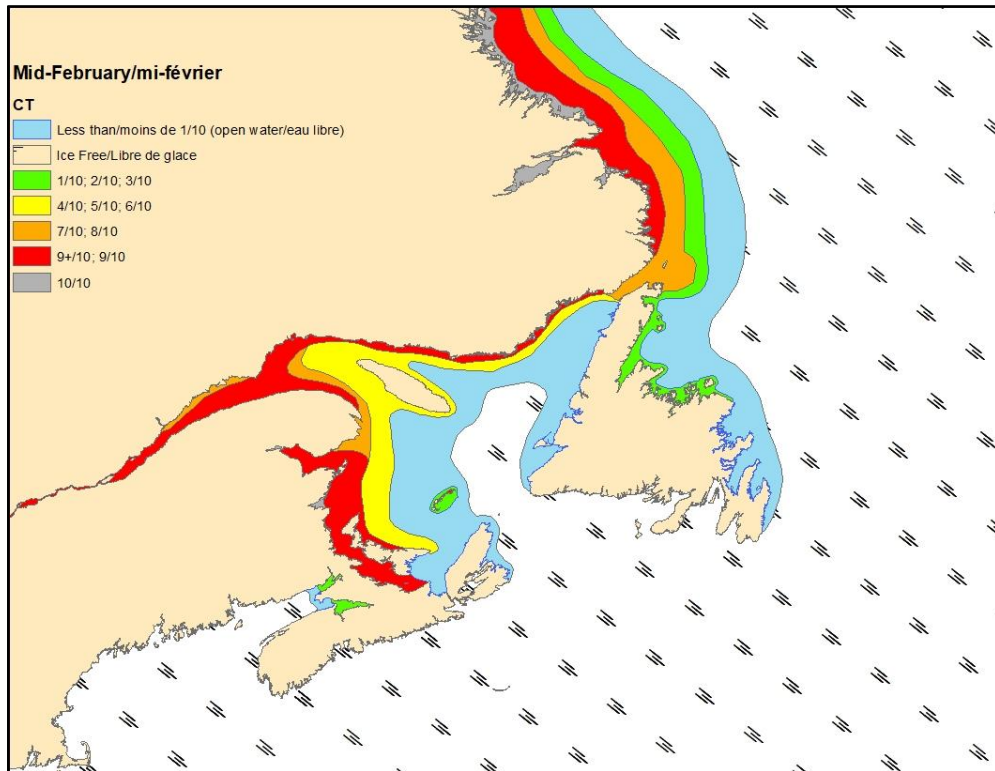


Figure 3: Expected ice conditions – mid-February 2022

## **Gulf of St-Lawrence**

### **Winter temperature and ice forecasts**

The surface air temperature is expected to be above normal for the December-February period for the Gulf. Ice conditions are expected to be below normal.

### **The Estuary.**

Outlook for December...

December 1-17: Open water.

December 18-25: Open water except 4-6 tenths new and grey ice along parts of the shore.

December 26-31: Open water except 7-8 tenths new and grey ice along parts of the shore

Outlook for January...

January 1-10: Open water except 7-8 tenths new and grey ice in the western section and along parts of the coast.

January 11-20: 1-3 tenths new and grey ice except 7-8 tenths new and grey in the western section and along parts of the shore.

January 21-31: 7-8 tenths new and grey ice except 9-9+ tenths grey and grey-white ice along the southern shore.

Outlook for February...

February 1-10: 7-8 tenths new and grey ice except 9-9+ tenths grey and grey-white ice along the southern shore.

February 11-20: 9-9+ tenths grey and grey-white ice.

February 21-28: 4-6 tenths new and grey ice except 7-8 tenths grey and grey-white ice in the eastern section and along the southern shore.

### **Chaleur Bay southward to Northumberland Strait.**

Outlook for December...

December 1-10: Open water.

December 11-20: Open water except occasion patches of 1-3 tenths new ice in southern Chaleur Bay and near Miramichi.

December 21-31: Open water except 7-8 tenths new and grey ice along parts of the shore west of Cape Tormentine.

Outlook for January...

January 1-10: Open water except 7-8 tenths new and grey ice along the shore.

Consolidated grey ice in sheltered bays.

January 11-20: 1-3 tenths new and grey ice except 7-8 tenths new and grey ice along the shore. 4-6 tenths new and grey ice in western Northumberland Strait. Consolidated grey and grey-white ice in sheltered bays and inlets.

January 21-31: 7-8 tenths new and grey ice except 7-8 tenths grey and grey-white ice in Chaleur Bay and Northumberland Strait. Consolidated grey-white ice in sheltered bays and inlets.

Outlook for February...

February 1-15: 9-9+ tenths new and grey ice except 9-9+ tenths grey and grey-white ice in Northumberland Strait. Consolidated grey-white ice in sheltered bays and inlets.

February 16-28: 9-9+ tenths grey and grey-white ice except 9-9+ tenths grey-white and first-year ice in Chaleur Bay and Northumberland Strait. Consolidated grey-white and first-year ice in sheltered bays and inlets.

### **West coast of Newfoundland.**

Outlook for December...

December 1-31: Open water.

Outlook for January...

January 1-10: Open water.

January 11-20: Open water except 1-3 tenths new and grey ice in sheltered bays and inlets.

January 21-31: Open water except 4-6 tenths new and grey ice along parts of the coast. Consolidated grey ice in sheltered bays and inlets.

Outlook for February...

February 1-28: Open water except 4-6 tenths new and grey ice along parts of the coast. Consolidated grey-white ice in sheltered bays and inlets.

### **North Shore of Quebec.**

Outlook for December...

December 1-10: Open water.

December 11-20: Open water except occasional patches of 1-3 tenths new ice along the shore.

December 21-31: Open water except 1-3 tenths new and grey ice along parts of the shore. Consolidated grey ice in sheltered bays and inlets.

Outlook for January...

January 1-10: Open water except 1-3 tenths new and grey ice along the shore.

Consolidated grey-white ice in sheltered bays and inlets.

January 11-20: Open water except 1-3 tenths new and grey ice along the shore. 4-6 tenths new and grey ice along the shore east of Cape Whittle. Consolidated grey-white ice in sheltered bays and inlets.

January 21-31: Open water except 4-6 tenths new and grey ice along the shore. 7-8 tenths new and grey ice along the shore east of Cape Whittle. Consolidated grey-white ice in sheltered bays and inlets.

Outlook for February...

February 1-14: 1-3 tenths new and grey ice except 7-8 tenths new and grey ice along the shore and near the Strait of Belle Isle. Consolidated grey-white ice in sheltered bays and inlets.

February 15-28: 4-6 tenths grey and grey-white ice except 9-9+ tenths grey and grey-white ice along the shore and near the Strait of Belle Isle. Consolidated grey-white and first-year ice in sheltered bays and inlets.

### **Elsewhere.**

Outlook for December...

December 1-31: Ice free to open water.

Outlook for January...

January 1-10: Ice free to open water except isolated areas of 1-3 tenths new and grey ice near the Îles de la Madeleine and in sheltered bays along the north shore of Prince Edward Island and along Anticosti Island.

January 11-20: Ice free to open water except isolated areas of 4-6 tenths new and grey ice near Anticosti Island and the Îles de la Madeleine. 1-3 tenths new and grey ice along the north shore of Prince Edward Island.

January 21-31: Open water except 7-8 tenths new and grey ice near the Îles de la Madeleine and along sections of Anticosti Island. 1-3 tenths new and grey in the western section.

Outlook for February...

February 1-14: Open water except 7-8 tenths new and grey ice around the Îles de la Madeleine. 4-6 tenths new and grey ice around Anticosti Island and in the western section. 9-9+ tenths new and grey ice along the north shore of Prince Edward Island.

February 15-28: 4-6 tenths new and grey ice except 7-8 tenths grey and grey-white ice in the southern half. 9-9+ tenths grey and white ice in the extreme southern section.

## **East Newfoundland Waters and Labrador Coast.**

### **Winter temperature and ice forecasts.**

Average air temperatures are expected to be above normal for December to February over the East Newfoundland Waters. Near to above normal temperatures are forecast along the Labrador coast. Near to below normal ice conditions are forecast.

### **Labrador Coast and Strait of Belle Isle.**

Outlook for December...

December 1-10: Bergy water except 1-3 tenths new and grey ice along parts of the coast near Cartwright and northward.

December 11-20: Bergy water except 1-3 tenths new and grey ice from Cartwright to Groswater Bay. 4-6 tenths new and grey ice along the coast north of Groswater Bay.

December 21-31: Bergy water except 4-6 tenths new and grey ice along the coast from the Strait of Belle Isle to Groswater Bay. 7-8 tenths new and grey ice along the coast north of Groswater Bay.

Outlook for January...

January 1-10: Bergy water except 1-3 tenths new and grey ice in the Strait of Belle Isle. 7-8 tenths new and grey ice along the coast from the Strait of Belle Isle to Black Tickle except 9-9+ tenths grey and grey-white ice along the coast north of Black Tickle.

January 11-20: 1-3 tenths grey and grey-white ice except 9-9+ tenths grey and grey-white ice extending 30 nautical miles from the coast. 4-6 tenths new and grey ice in the Strait of Belle Isle.

January 21-31: 4-6 tenths grey and grey-white ice except 9-9+ tenths grey and grey-white ice extending 30 nautical miles from the coast south of Black Tickle. 9-9+ tenths grey-white and first-year ice extending 60 nautical miles from the coast north of Black Tickle. 7-8 tenths new and grey ice in the Strait of Belle Isle

Outlook for February...

February 1-14: 4-6 tenths grey-white and first-year ice except 9-9+ tenths grey-white and first-year ice extending 90 nautical miles from the Labrador coast. 7-8 tenths grey and grey-white ice in the Strait of Belle Isle.

February 15-28: 4-6 tenths grey-white and first-year ice except 9-9+ tenths first-year ice extending 120 nautical miles from the Labrador coast. 9-9+ tenths grey and grey-white ice in the Strait of Belle Isle.

### **Lake Melville.**

Outlook for December...

December 1-7: 7-8 tenths new and grey ice.

December 8-15: 9-9+ tenths grey and grey white ice.

December 16-31: 9-9+ tenths grey-white ice. Consolidated grey-white ice along parts of the shore.

Outlook for January...

January 1-10: Consolidated grey-white and first-year ice.

January 11-31: Consolidated first-year ice.

Outlook for February:

February 1-28: Consolidated first-year ice.

### **Newfoundland.**

Outlook for December...

December 1-20: Open water to ice free.

December 21-31: Open water to ice free except occasional patches of 1-3 tenths new and grey ice in isolated bays and inlets.

Outlook for January...

January 1-10: Open water except occasional patches of 1-3 tenths new and grey ice along parts of the coast.

January 11-20: Open water except 1-3 tenths new and grey ice along parts of the coast and in Hare Bay.

January 21-31: Open water except 1-3 tenths new and grey ice along the coast. 4-6 tenths new and grey ice near the tip of the Northern Peninsula.

Outlook for February...

February 1-10: Open water except 1-3 tenths new and grey ice along the coast. 7-8 tenths new and grey ice near the tip of the Northern Peninsula.

February 11-20: Open water except 1-3 tenths new and grey ice along the coast. 7-8 tenths grey and grey-white ice near the tip of the Northern Peninsula

February 21-28: 1-3 tenths new and grey ice except 4-6 tenths grey and grey while ice along the coast. 9-9+ tenths grey and grey-white ice in the northern section.