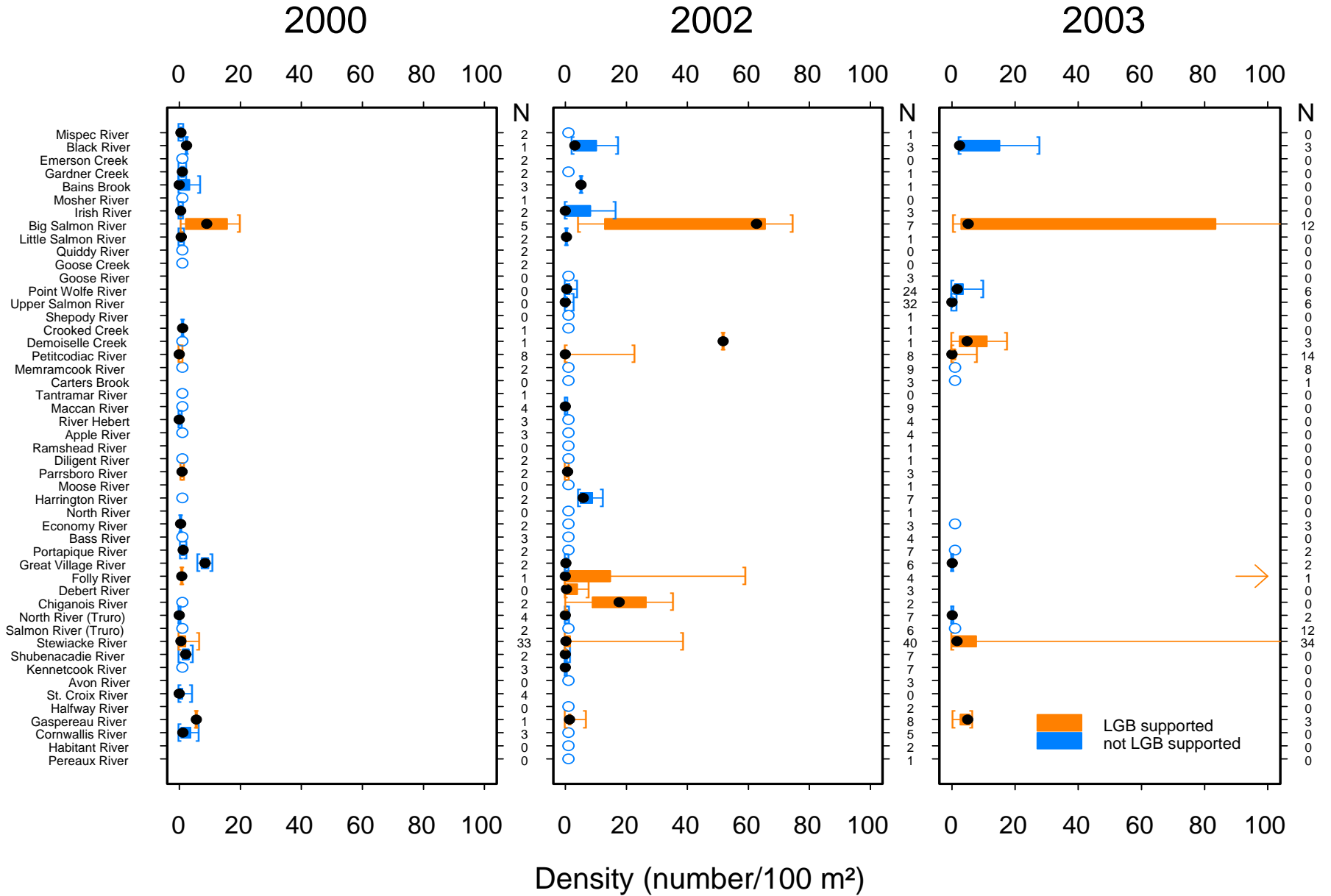




**Figure 6. Densities of juvenile Atlantic salmon in inner Bay of Fundy rivers based on electrofishing during 2000, 2002 and 2003.**





The column “N” gives the number of electrofishing sites in each river in each year. The solid dot shows the median density (the middle value: half of the sites had equal or higher densities and half the sites had equal or lower densities). O’s mark rivers in which salmon were not captured. The box shows the inter-quartile range: half the sites had densities within this range. The whiskers (lines with square brackets) are drawn to the minimum and maximum densities observed each year. LGB supported rivers are where juvenile Atlantic salmon had been released since 1996. Densities outside the range of the graph are marked with an arrow. Rivers with blank spaces were not electrofished in those years (from Gibson *et al.* 2004).