

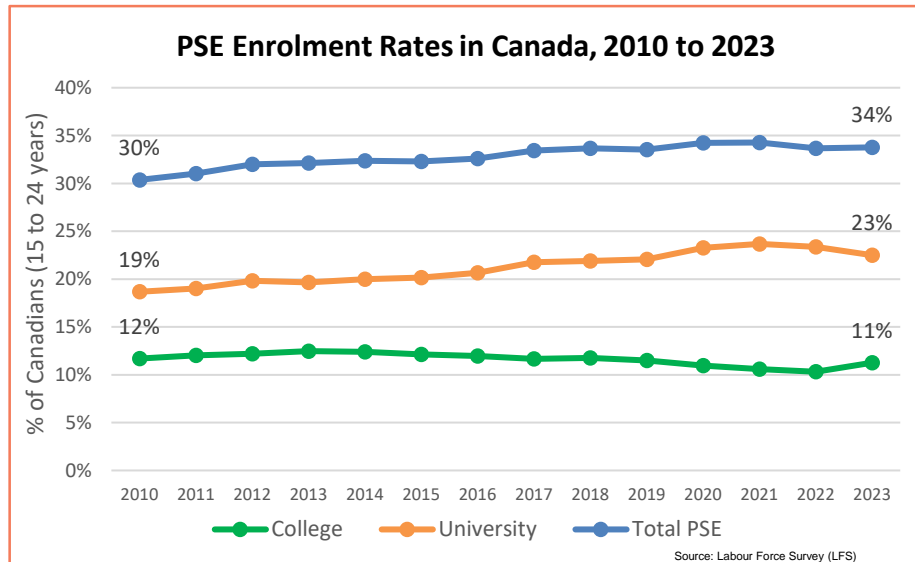


YOUTH EMPLOYMENT, SKILLS & LEARNING

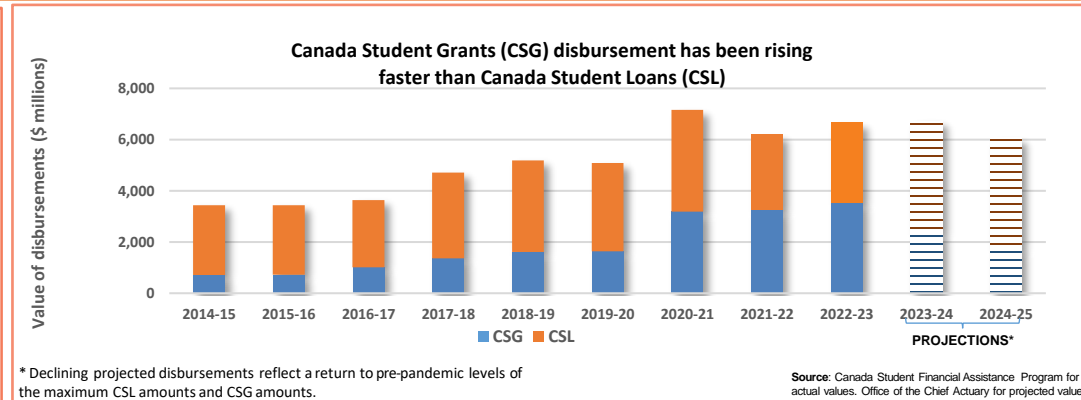
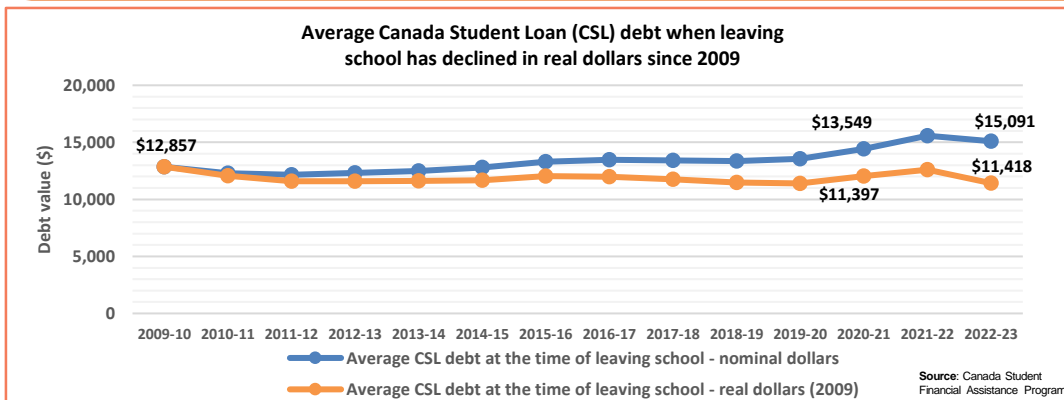
1. Young Canadians are the most educated generation

Youth 15-29 (as of June 2024)	Millions	% of Canadians aged 15+
Population	7.74	23.1%
Labour Force	5.82	26.2%
Unemployed	0.62	45.2%

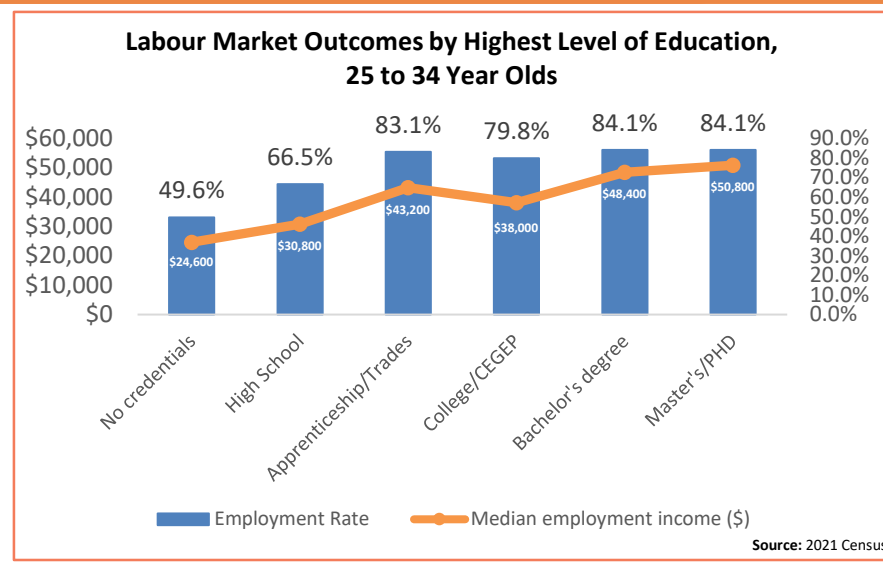
Canada ranks 2nd among OECD countries in terms of post-secondary educational (PSE) attainment for young adults (aged 25 to 34). In 2023, 67% of Canadian young adults held a post-secondary credential compared to OECD average of 47%. However, Canada's high ranking can be largely attributed to college graduates, including Quebec's CEGEP system. Some sub-groups of learners continue to face disproportionate barriers to accessing education.



2. While the cost of PSE is rising, student financial assistance minimizes the financial impact on youth



3. While those with post-secondary education do better, large numbers of youth face challenges making successful transitions from school to work



Too many youth transition into jobs that do not match their qualifications (underemployed)

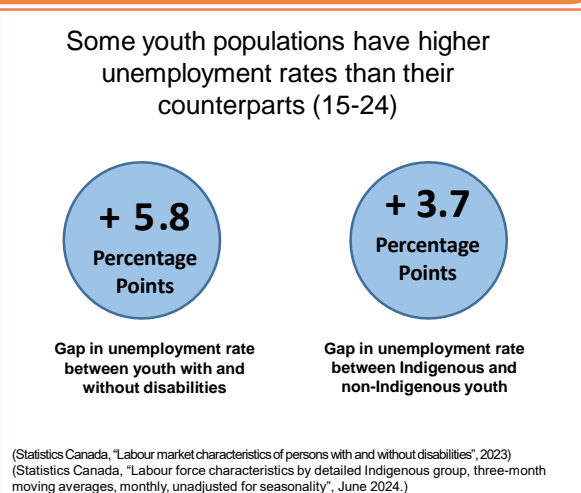
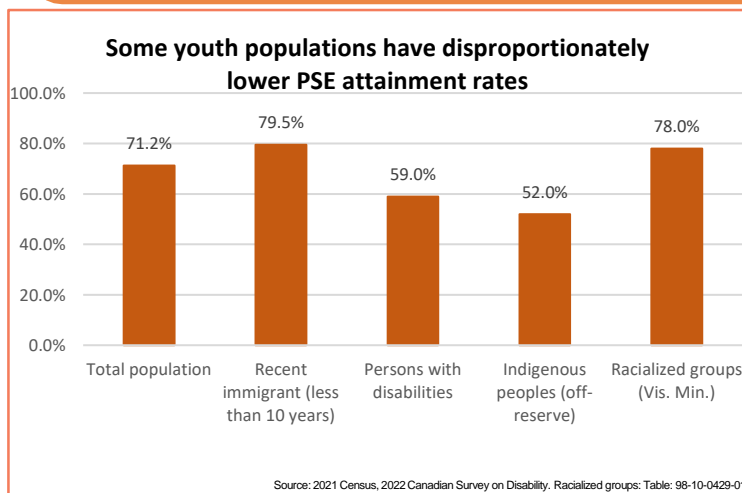
- In 2021, of university grads aged 25-34, 19.2% are in jobs requiring a high school diploma or equivalency certificate or less.

Source: 2021 Census

Employers rank foundational skills as the most important for entry level hires:
Digital Skills / Teamwork / Communication / Problem-Solving / Social Intelligence / Entrepreneurship

Source: Business Council of Canada (2016) Survey of 90 large Canadian private-sector employers

4. Some youth face systemic barriers and particular challenges



5. Youth are struggling with unemployment

In November 2024, the youth unemployment rate (13.9%) was more than double the unemployment rate for those 15 and older (6.8%). For youth, this was one of the highest unemployment rates in three years, continuing the rising trend observed since June 2022.



6. Work-integrated learning improves employment outcomes for students

- Employers are more likely to hire students with work experience:** 61% of employers selected graduates who had participated in some form of work-integrated learning in their PSE programs (Sattler and Peters, *Work-Integrated Learning and Post-Secondary Graduates: The Perspective of Ontario Employers*, 2012).
- PSE Graduates (2012-2016) who had a job related to their field of study while attending PSE were 14.1 percentage points more likely to find full-time work post-graduation** compared to those with a job unrelated to their studies (Martin and Rouleau, Statistics Canada, 2020; *Longitudinal and International Study of Adults*, 2014 and 2016)