

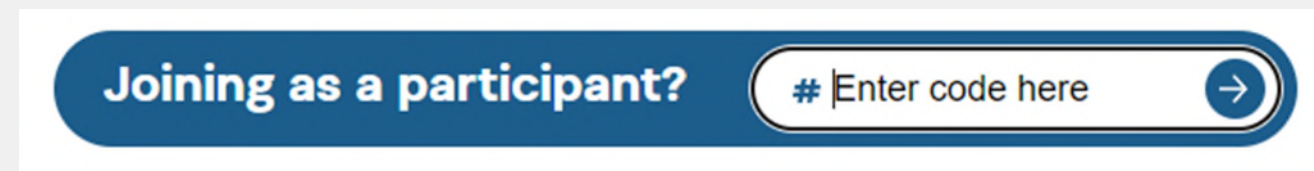
Call for Proposals 2024

New Applicant Webinar



Slido: How to ask questions

- Open slido.com in your web browser
- Enter the event code 117442



Joining as a participant? # Enter code here →

- Wait to re-directed to the event



Purpose of Webinar



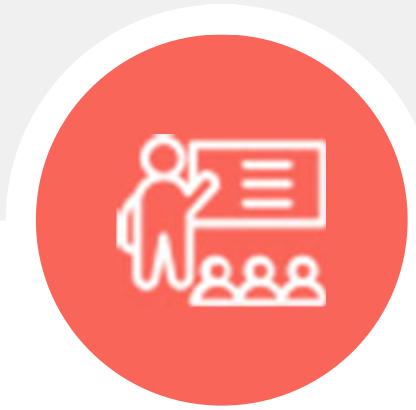
CFP 2024
Overview



Eligibility



Assessment
Criteria



GCS Tutorial



How to
Apply



Q&A
Period



Contact
Us

CFP 2024 Overview

Immigration, Refugees and Citizenship Canada (IRCC) administers the Settlement Program and Resettlement Assistance Program to help newcomers settle and adapt to life in Canada, setting them on a path to integration and full citizenship. Through these programs, IRCC works with many partners to deliver a set of ongoing high-quality services to newcomers.

The purpose of this Call for Proposals (CFP) is to establish a comprehensive set of Settlement and Resettlement Assistance Program services across Canada.



CFP 2024 Overview: Key Dates

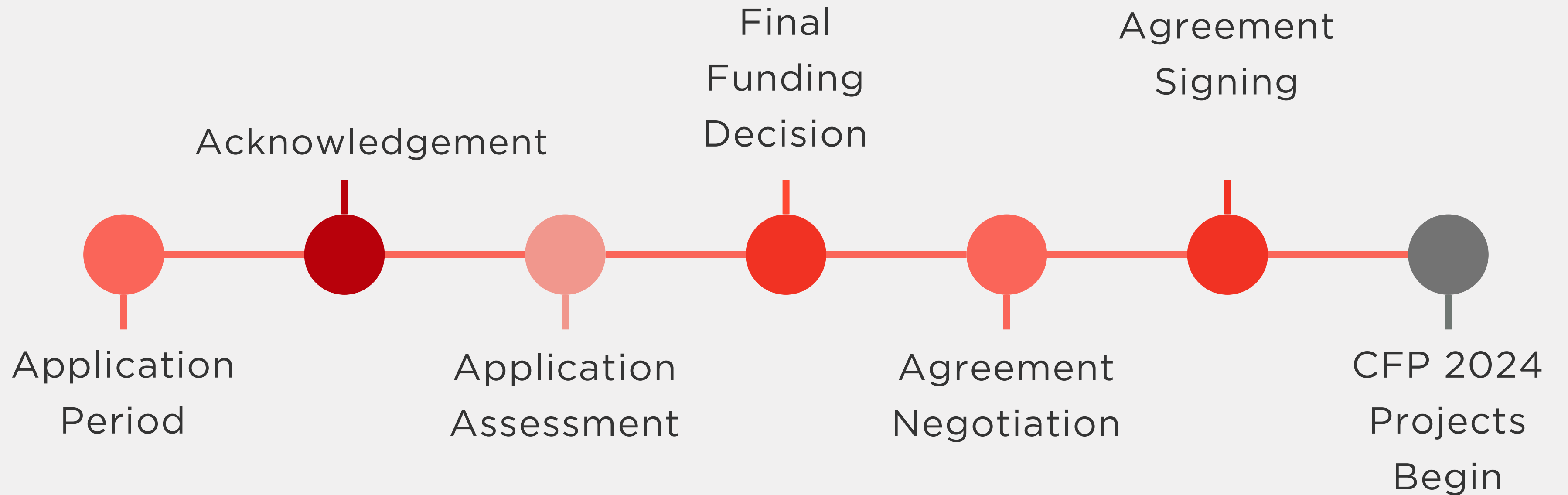


The application period began November 14. You must submit your application by January 31, 5 PM EST.



Funding for recommended projects will commence on April 1, 2025 and will be eligible for a duration of up to five years, ending no later than March 31, 2030.

CFP 2024 Overview: Process



Settlement and Integration Vision

IRCC strives to ensure that its Settlement and Resettlement Assistance Programs address barriers to effectively support the integration of newcomers into Canadian society.

In line with IRCC's commitments to Anti-Racism, Gender-based Analysis Plus, and Gender Equality, the Department is advancing equity priorities within CFP 2024 to ensure that diverse populations can benefit from inclusive Settlement and Resettlement Assistance programming.

This approach includes incorporating Truth and Reconciliation through programming that increases awareness of Indigenous-related topics among newcomers as well as facilitates meaningful connections and social cohesion between Indigenous Peoples, newcomers and Canadians.



CFP 2024 Settlement Program Overview:

Direct and Indirect Services

Direct Services

- Pre-arrival Services
- Needs and Assets Assessment and Referral Services (NAARS)
- Case Management Services
- Information and Orientation
- Language Training
- Employment-related Services
- Community Connections
- Settlement Workers In Schools (SWIS)
- Support Services

Indirect Services (Capacity Building, Coordination, Standardization)

- Indirect Services with a National/Sector Focus (e.g. Umbrella Organizations; SPOs seeking capacity building in Diversity, Equity, Inclusion)
- Indirect Services with a Community or Local Focus (e.g. Local Immigration Partnerships (LIPs))

CFP 2024 Overview: Programming Streams and Resettlement Assistance Program



FRANCOPHONE INTEGRATION PATHWAY

- Supports and enhances the vitality of Francophone Minority Communities
- Ensures French-speaking newcomers receive services in French by Francophone SPOs



EQUITY STREAM

- Provides targeted support to organizations representative of racialized communities, migrant women, and 2SLGBTQI+ populations to increase their participation in the settlement sector



SERVICE DELIVERY IMPROVEMENT (SDI)

- Invests strategically in projects that offer insights on program design and sector improvements
- Projects build evidence to support future settlement programming



RESETTLEMENT ASSISTANCE PROGRAM

- Funding program operating in all provinces outside Quebec that supports government-assisted refugees and other eligible clients upon arriving in Canada
- Funds organizations to deliver immediate and essential services

CFP 2024 Overview

IRCC encourages Settlement and Resettlement Assistance Program proposals that align with the following priorities



- Nationally consistent services
- Digital and hybrid delivery of services
- Strengthening the Francophone integration pathway
- Data and evidence based approaches
- Maintain and expand targeted programming
- Support for mental health and well-being
- Promoting welcoming communities through increasing collaboration and coordination amongst stakeholders, including service providers
- Increasing availability and quality of services in rural, remote communities and small/medium centres

Applicant Eligibility

For settlement services, eligible **applicants** are:

- municipal governments
- not for profit organizations
- businesses
- educational institutions



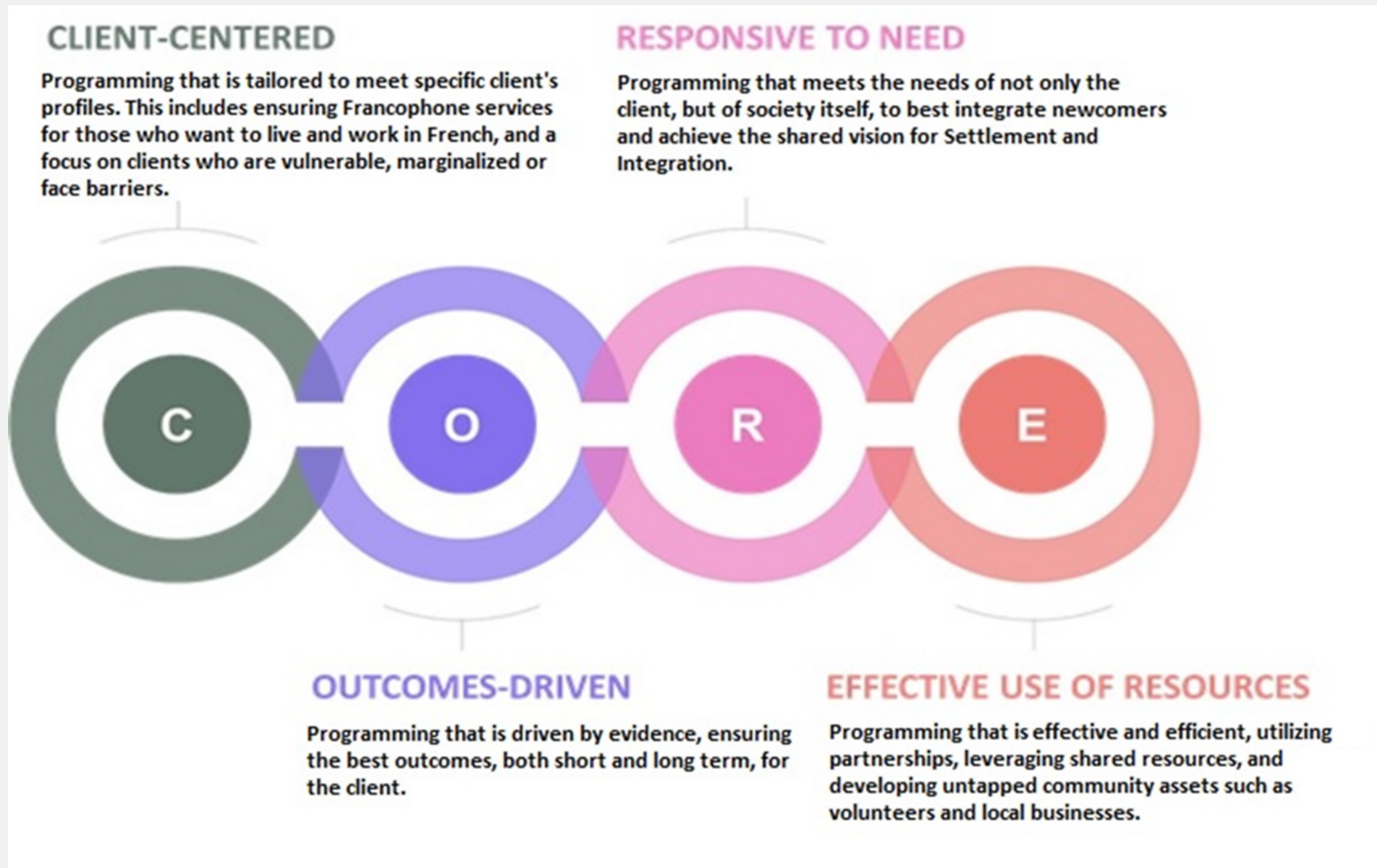
Client Eligibility

Only the following newcomers are eligible to **receive** settlement services under the Settlement Program:

- Permanent residents of Canada
- Protected persons as defined in Section 95 of the Immigration and Refugee Protection Act
- Individuals who have been selected, inside or outside Canada, to become permanent residents (pending verifications) and who have been informed, by a letter from IRCC
- Convention refugees and protected persons outside Canada who have been selected for resettlement in Canada by IRCC
- Certain temporary residents participating in the Atlantic Immigration Program and Rural and Northern Immigration Pilot
- Newcomers eligible to receive supports under the Resettlement Assistance Program (RAP) include Government-Assisted Refugees (GARs), as well as a limited number of other eligible clients, as outlined in the RAP Terms and Conditions and the Funding Guidelines.



Assessment Criteria



All proposals are assessed on the CORE principles. You are expected to incorporate these principles in the design, implementation and evaluation of your proposed project(s).

A detailed overview of the assessment criteria can be found in the funding guidelines

Assessment Criteria

The logo for Gender-Based Analysis Plus (GBA Plus) features the text "GBA PLUS" in a large, bold, black font. The letters "P", "L", "U", and "S" are filled with a colorful, multi-colored grid pattern. Below this, the text "GENDER-BASED ANALYSIS PLUS" is written in a smaller, black, sans-serif font.

GBA PLUS
GENDER-BASED ANALYSIS PLUS

The logo for l'Analyse Comparative entre les Sexes Plus (l'ACS Plus) features the text "l'ACS PLUS" in a large, bold, black font. The letters "P", "L", "U", and "S" are filled with a colorful, multi-colored grid pattern. Below this, the text "ANALYSE COMPARATIVE ENTRE LES SEXES PLUS" is written in a smaller, black, sans-serif font.

l'ACS PLUS
ANALYSE COMPARATIVE ENTRE LES SEXES PLUS

Gender-based Analysis Plus (GBA Plus) assesses how diverse people may experience policies, programming and initiatives. It is an intersectional approach, informed by data and evidence.

Funding applicants are encouraged to incorporate GBA Plus in the design, implementation and evaluation of the proposed project(s), **as much as possible** to create effective programming for newcomers.

This includes programming for diverse populations that experience greater barriers to services (e.g. women; youth; 2SLGBTQI+ populations; racialized newcomers, seniors; people with disabilities) and to address specific issues (e.g. sexual and gender-based violence; mental health needs).

Outcomes-Driven Programming

The application is grounded in the outcomes of the (Re)Settlement Program Logic Model, which applies to all programming and outlines the relationship between activities delivered and expected outcomes

In the application, you will need to briefly describe how:

- the proposed activities will support IRCC's immediate outcomes
- immediate outcome achievement will be assessed
- intermediate outcomes achievement will be evaluated



Grants and Contributions System (GCS) Tutorial



How to Apply



Create your organization ID

If you do not yet have a Grants and Contributions System (GCS) Organization ID, access GCS and click on the “Create an Account” link to set up your account and obtain your Organization ID.

Complete application form

Log into your Grants and Contributions System account and create a new application. Complete each section of the application form by responding to the listed questions, and refer to these Funding Guidelines to shape your answer.

Apply Online

You must click the “submit” button on your application form before the deadline, in order for your application to be considered for funding. After submitting, you will not be able to modify your application form.

Question and Answer Session

We value your participation and encourage you to ask questions during the virtual session. To ensure a smooth and organized Q&A experience, please follow the guidelines below:

- Open slido.com in your web browser
- Enter the event code 117442
- Wait to re-directed to the event



Resources: Funding Page

Here is a list of resources to help you throughout your application. The following can be found on our Funding Page:

- Funding Guidelines
- Funding Guidelines Glossary
- Frequently Asked Questions and Answers
- (Re)settlement Logic Model
- Government of Canada GBA Plus guidance



Resources: GCS

Status Page

All sections listed below must be completed before you can submit the application. Sections can be completed in any order, at your own pace. Users listed in the table below will automatically receive notifications about this application after it has been submitted. Once the status of every section is "Completed," you can begin the Executive Declaration and submit your application.

[TUTORIAL – how to use this page](#)

***Applicants can navigate to the tutorial page in any section of the application form for more information about how to complete each section, as well as links to tipsheets for step by step technical instruction.**

View from any tutorial – links to tutorial table of contents and tipsheet index:

[Tutorials Table of Contents](#)

[Tip Sheets Index](#)

[Contact Help Desk](#)

Applications: Status Page

Status Page

This tutorial provides information about how to view your application progress, how to download a printable PDF version of your application, and how to ensure that your organization is properly notified once the application has been assessed by the Department.

Table of Contents

- [Viewing your Application Progress](#)
- [Downloading and Printing your Application](#)
- [Receiving Notifications about your Application's Status](#)
- [Tip Sheet](#)

To download a tipsheet – navigate to the bottom of the tutorial page, click to the hyperlink that says [Click here to download](#)

View at the bottom of the page to download a tipsheet:

Tip Sheet

Changing Contacts on an Application

If you do not see the PDF, it means you do not have Adobe Reader or PDF support in this web browser [Click here to download the PDF](#)

The image shows where and how to access the resources that are available within the GCS Partner Portal to help you complete each section of the online application form.



Contact Us

For questions or clarifications related to the Call for Proposals, contact cfp-adp@cic.gc.ca

For help with the Grants and Contributions System Partner Portal or functionality of the application form, contact gcs-ssc@cic.gc.ca

