



**CANADA'S LEGAL TEAM**  
**L'ÉQUIPE JURIDIQUE DU CANADA**

# Artificial Intelligence – What do we know? Where do we go from here?

Michelle Mann & Robert Hersch

Department of Justice

Immigration, Refugees and Citizenship Canada - Symposium on Algorithmic  
Government April 23, 2019



Department of Justice  
Canada

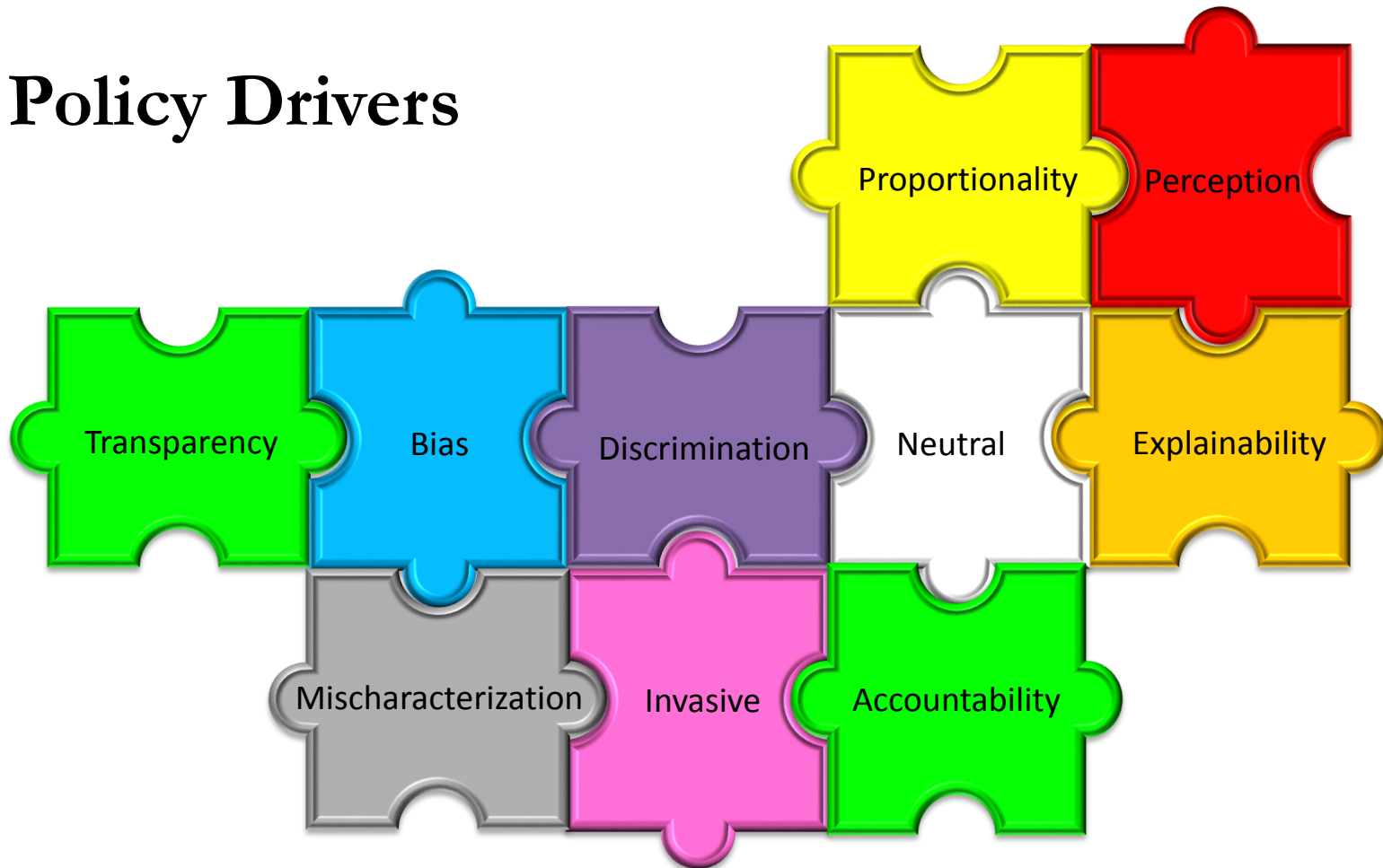
Ministère de la Justice  
Canada

Views expressed are personal and do not constitute the official views of the Department of Justice.

**Canada**

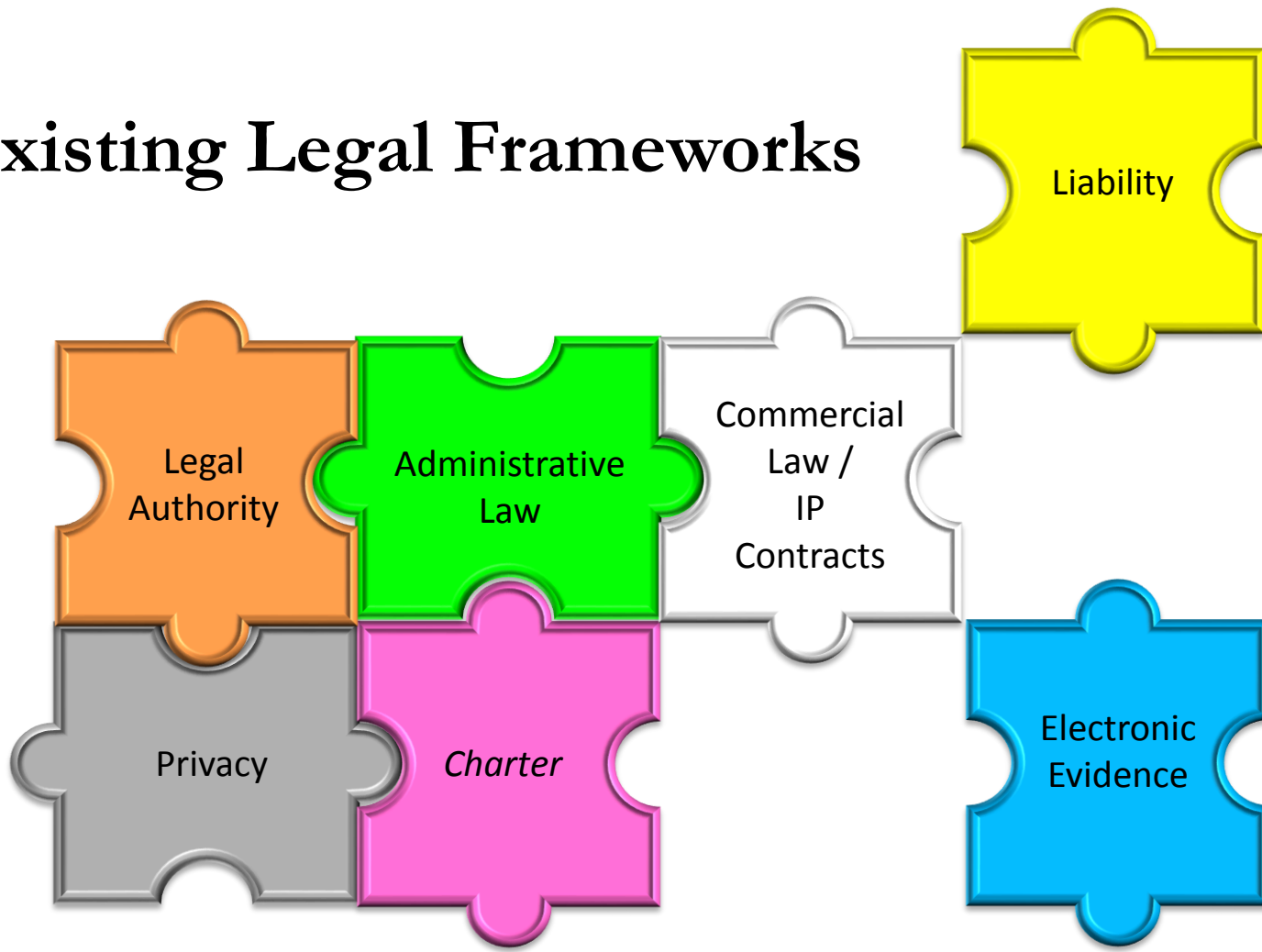


# Policy Drivers





# Existing Legal Frameworks





# What will this mean for your AI solution?





# Answer depends on what you are doing...

Steps to design the solution?

Functionality of AI solution?

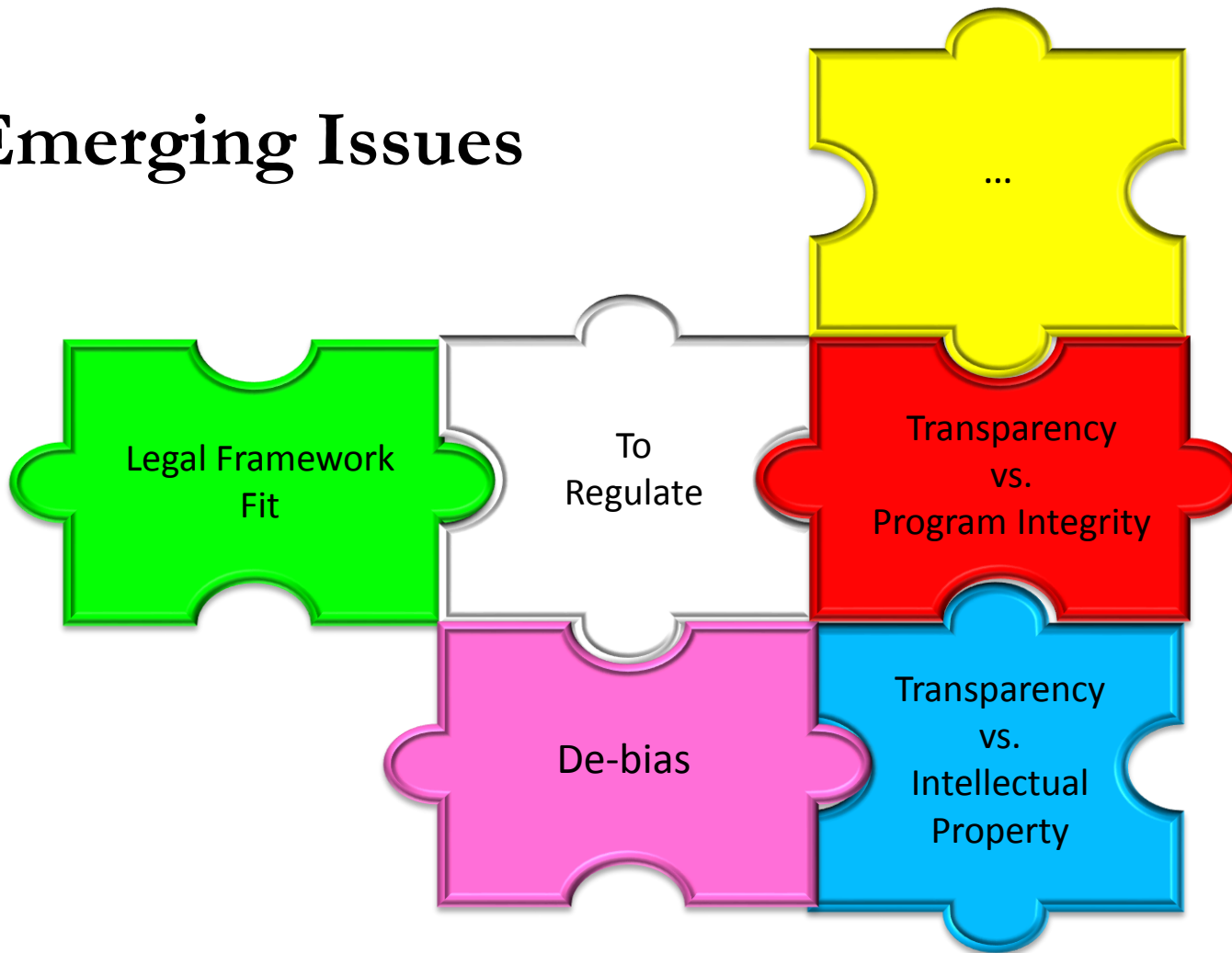
Impacts of AI solution?

Key to Legal  
Considerations





# Emerging Issues



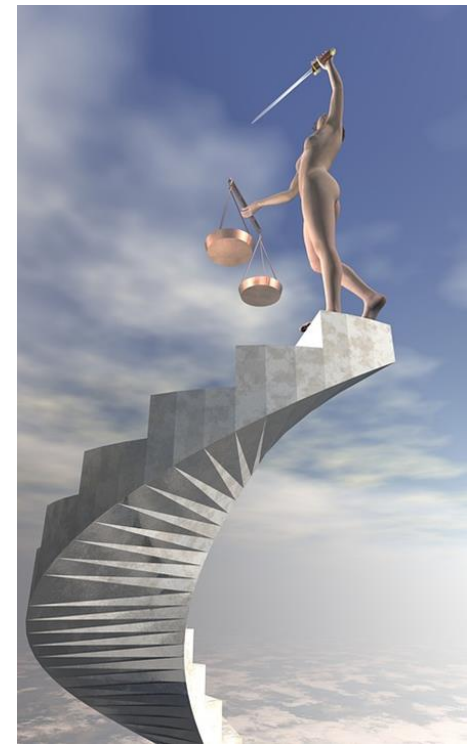


# The Future : Will the law pivot? How?

Force the technology into the traditional legal framework?

Will the courts pivot - recognize new approaches in face of the technology?

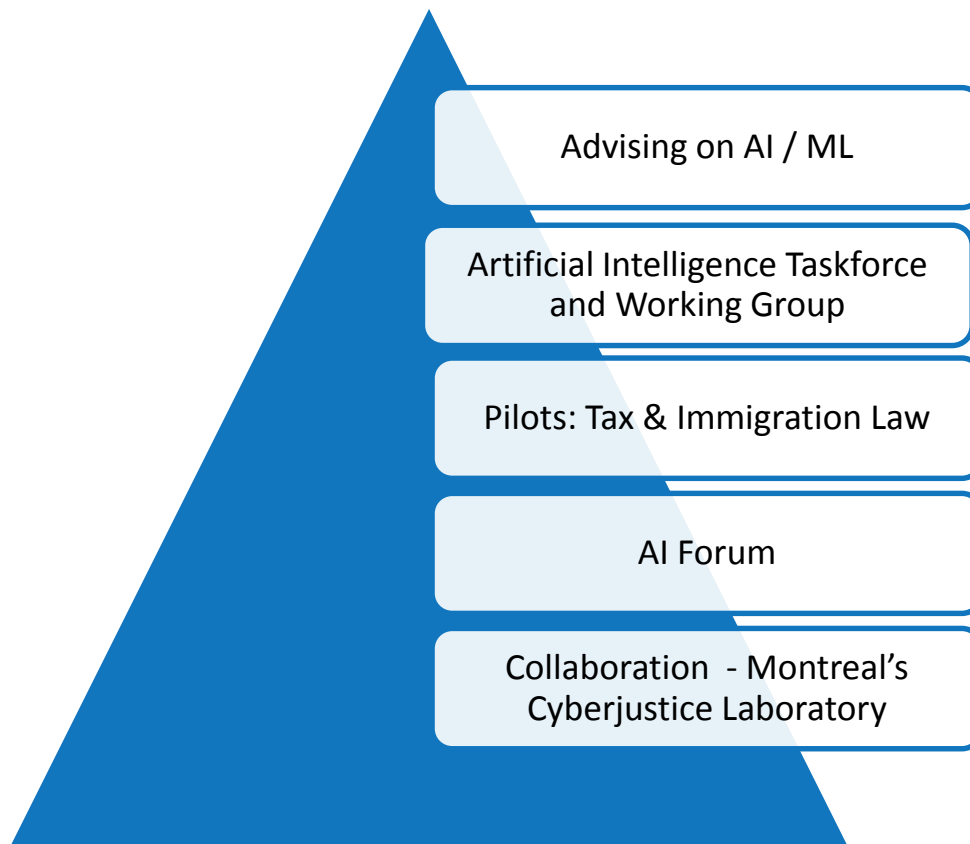
Create new legal framework?







# DOJ Work







# What do we need from you?

Policy development

Technology training

Engage us early!





# Practical Tips for the AI Practitioner...





# Questions?



# Practical Tips

Symposium on Algorithmic Government  
Michelle Mann, Robert Hersch  
Department of Justice  
April 23, 2019

START

Actions over the lifecycle of the project



## Diagnostics

### Legal Diagnostic

Authorities  
Issues impacting development  
and design

### Data Management Diagnostics

Collection, use, disclosure,  
retention, security

### Data Strategy

New datasets



## Model Design

### Model Development and Testing

Scrub model and rules for:  
Bias

Discrimination  
Program requirements  
Relevance

Legal requirements

Who is the decision-maker?



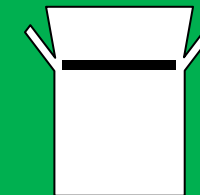
## Client Facing

### Information to Clients

Privacy notices  
Web notices  
Information to clients

Communications products

Decision notes  
Decision letters



## Golden Box

### System/Model Records

Development  
Deployed (v1,v2,v3)

### Model Operation/ Outputs

By file, by day, by week  
summaries

### IP Management

IP used  
IP created  
GoC or contractor



## Maintenance

### Ongoing Operations and Changes

Review for bias and  
discrimination

Monitoring, testing, quality  
assurance

Design changes

Data management / retention

Legal consultation (again)