

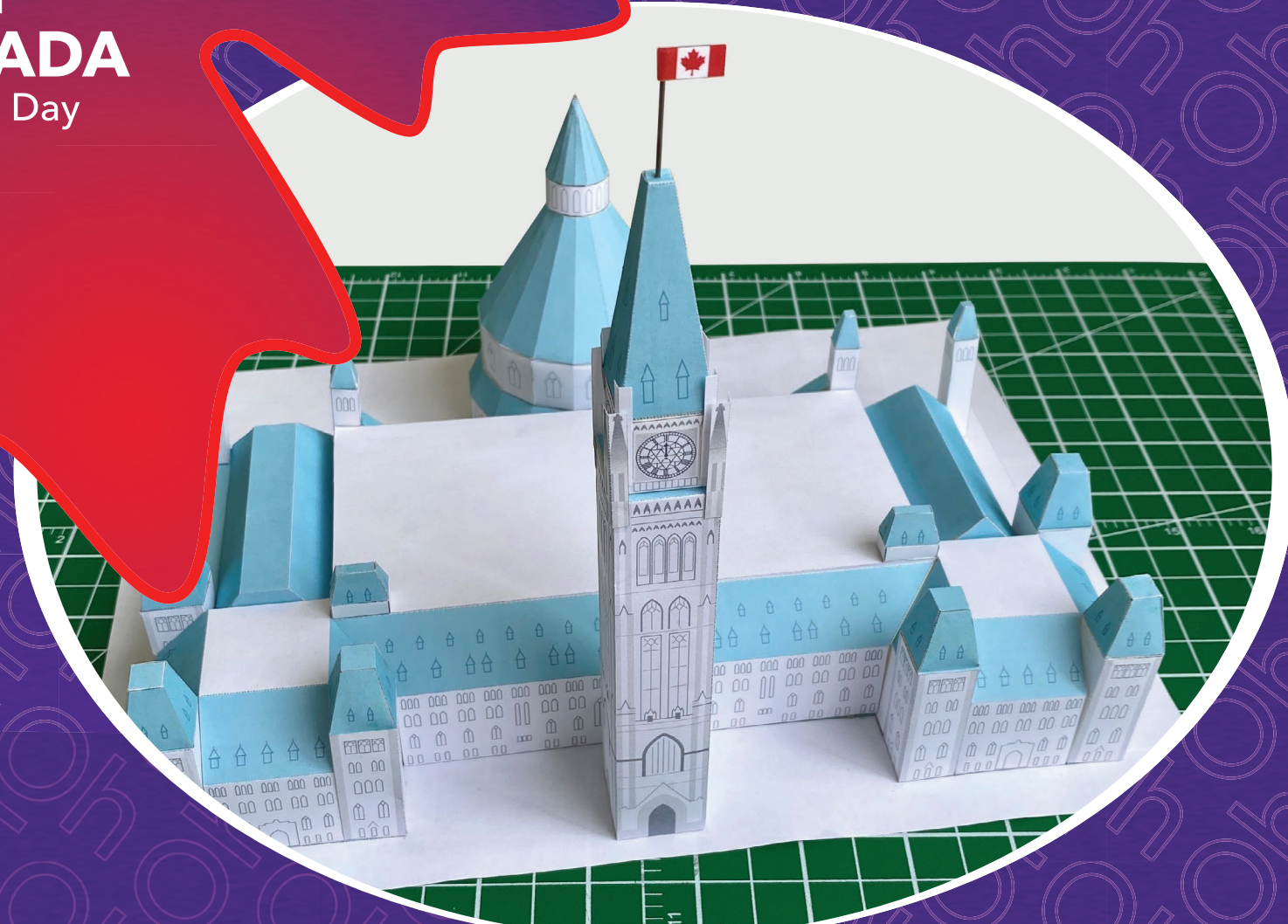


Canadian
Heritage

Patrimoine
canadien

Canada

La fête du
CANADA
Day



Print, cut and assemble at home!

Parliament of Canada 3D Model

Celebrate Canada Day with this paper model of the Centre Block and Peace Tower of the Parliament Buildings in Ottawa, to print, cut and assemble at home!

This fun project will test your crafting skills. In this document, you will find visual instructions on how to assemble your model. The various numbered pieces come with illustrations to guide you through your creation process. Do you feel up to the challenge?

To start, try building the Peace Tower only. When you feel confident, why not try the rest of the Centre Block? Take note, however: it is quite a challenge, and will take several hours to assemble!

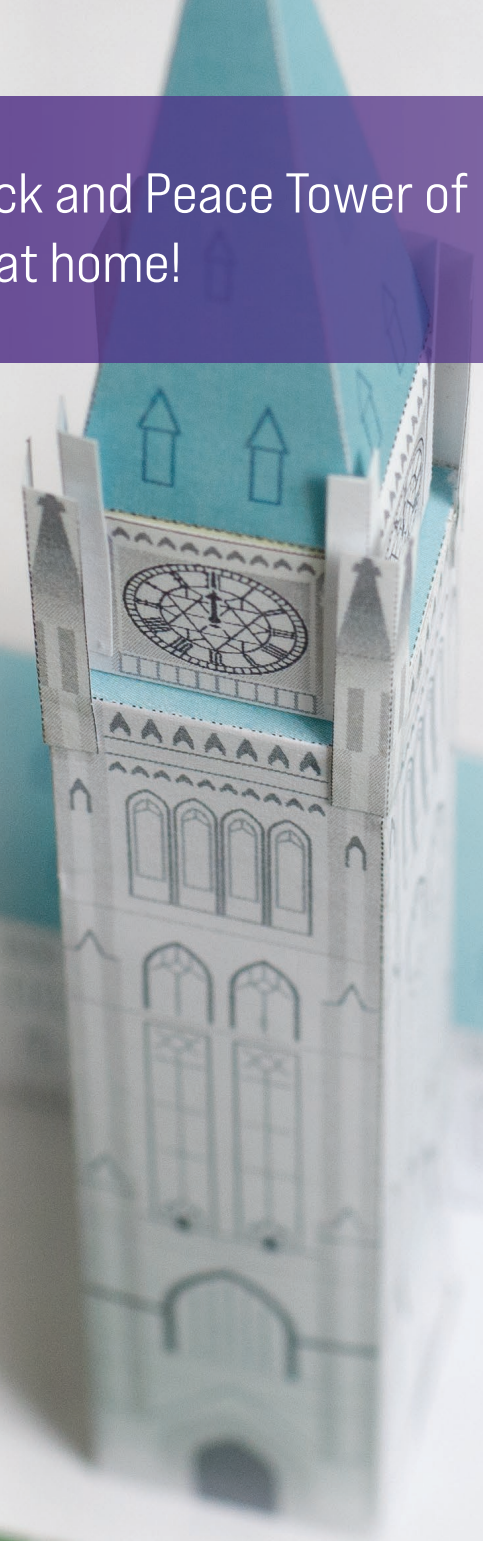
What you will need:

- A printer (colour printing is recommended)
- 22 sheets of letter-sized white paper (8 ½ x 11 in)
- Scissors
- Craft knife
- Glue
- A ruler

Tips & Tricks:

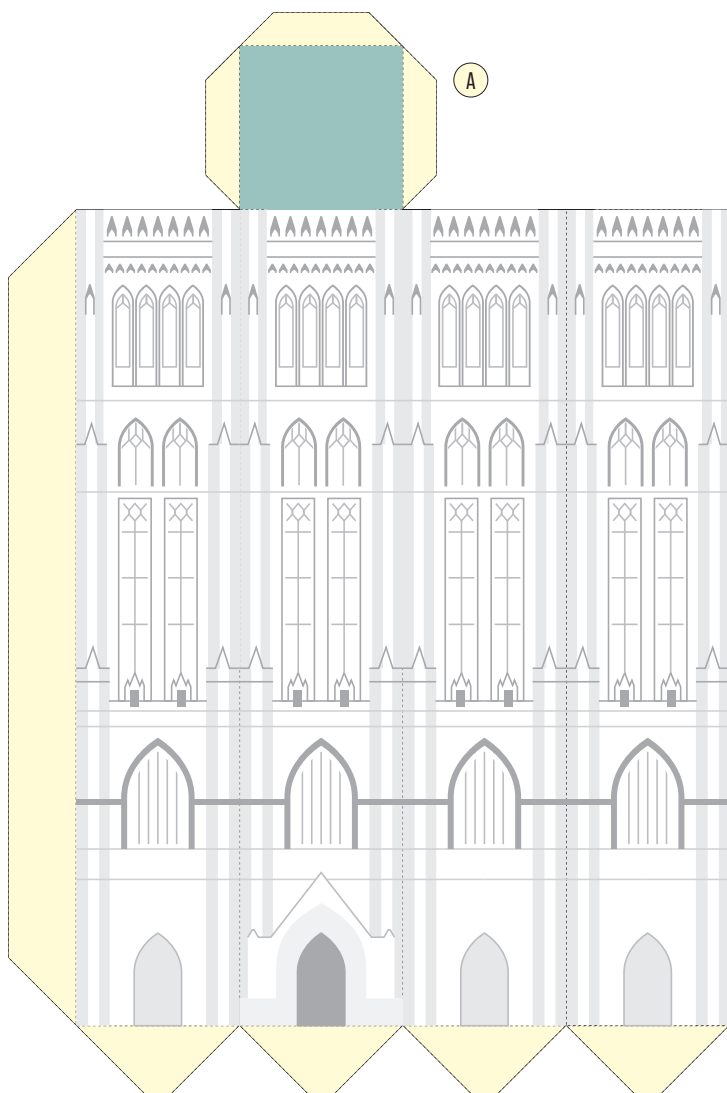
- For both the Peace Tower and the entire Centre Block, base templates have been provided to help you place the assembled structures. These provide a "floor plan" on which you can place the assembled project to ensure everything lines up properly. It is recommended to **glue your assembled structures to these base sheets** to keep everything in place.
- To properly assemble your pieces, **cut along the straight outer lines, and fold along the dotted lines.**
- **The yellow tabs and flaps are to be glued**, either to create the individual pieces or to assemble them into the larger structures.
- **Precision is key!** In order to ensure your folds are crisp and straight, try folding the pieces where required by using the straight edge of a ruler.
- Some of the parts are quite small; feel free to modify your tools to help you, for example by using a magnifying glass.

Good luck, and have fun!

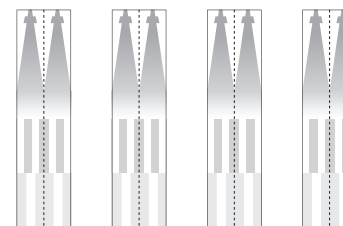


Peace Tower: pieces to print, cut and assemble

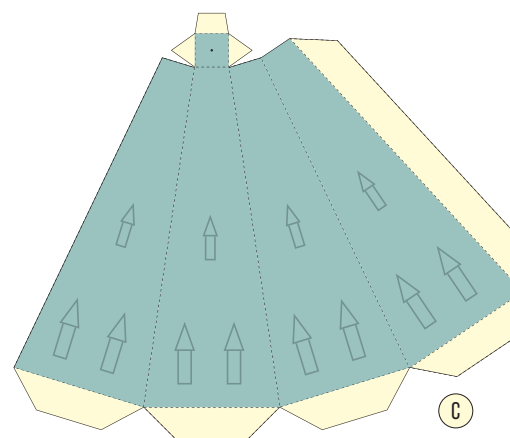
Please print this page at actual size.



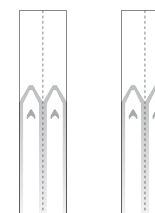
F



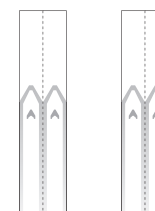
E



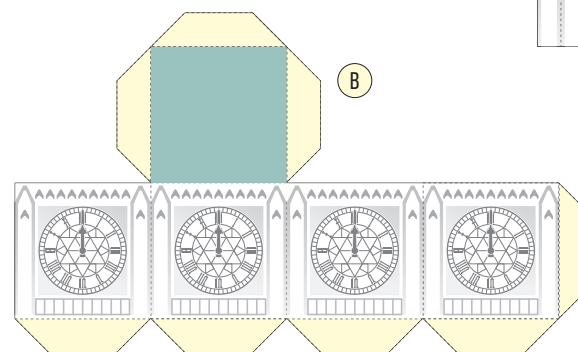
C



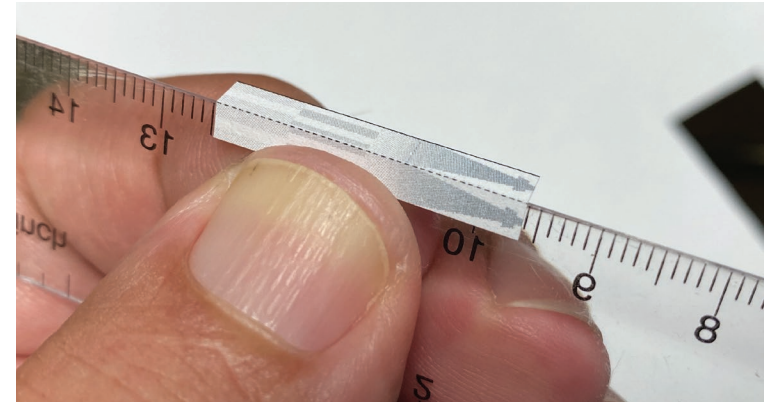
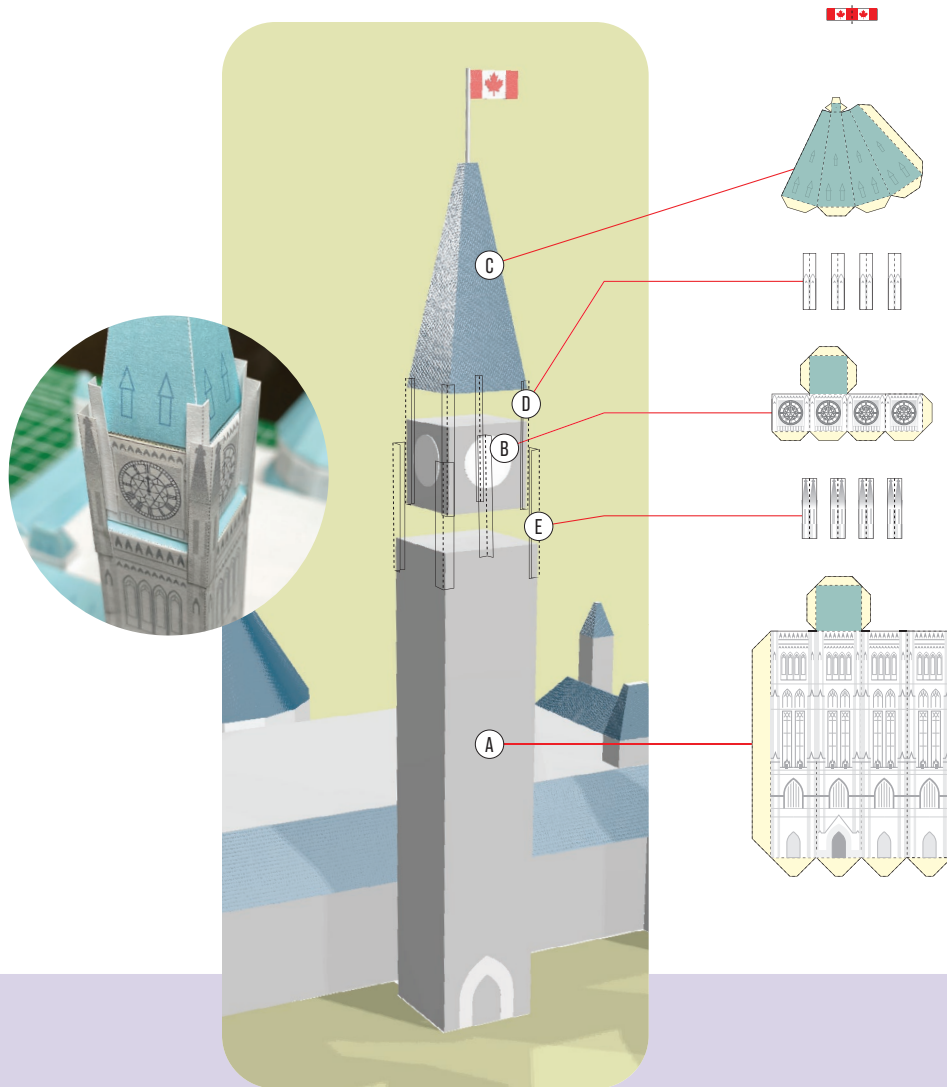
D



B

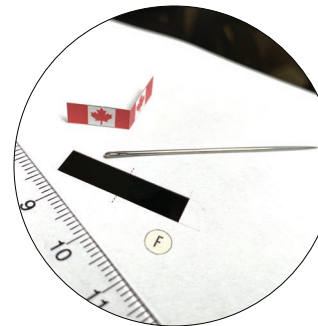


Peace Tower: assembly instructions

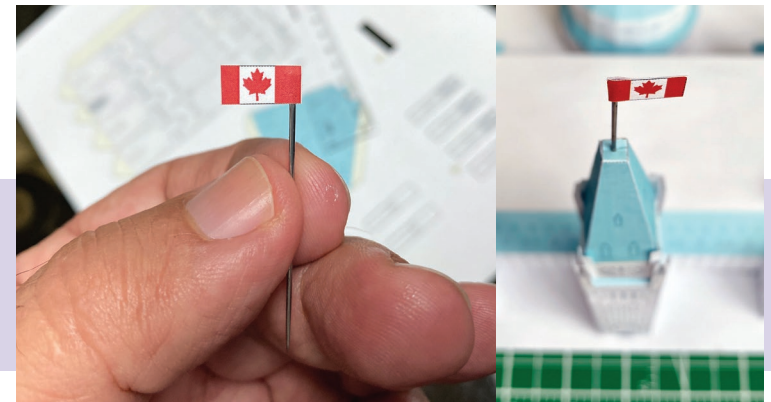


Tip!

Use a craft knife gently on the dotted fold lines — to avoid cutting them — and then press the paper lightly against the edge of a fine ruler to fold it precisely.



A needle or toothpick could be used as the flag pole and get inserted on the tower.

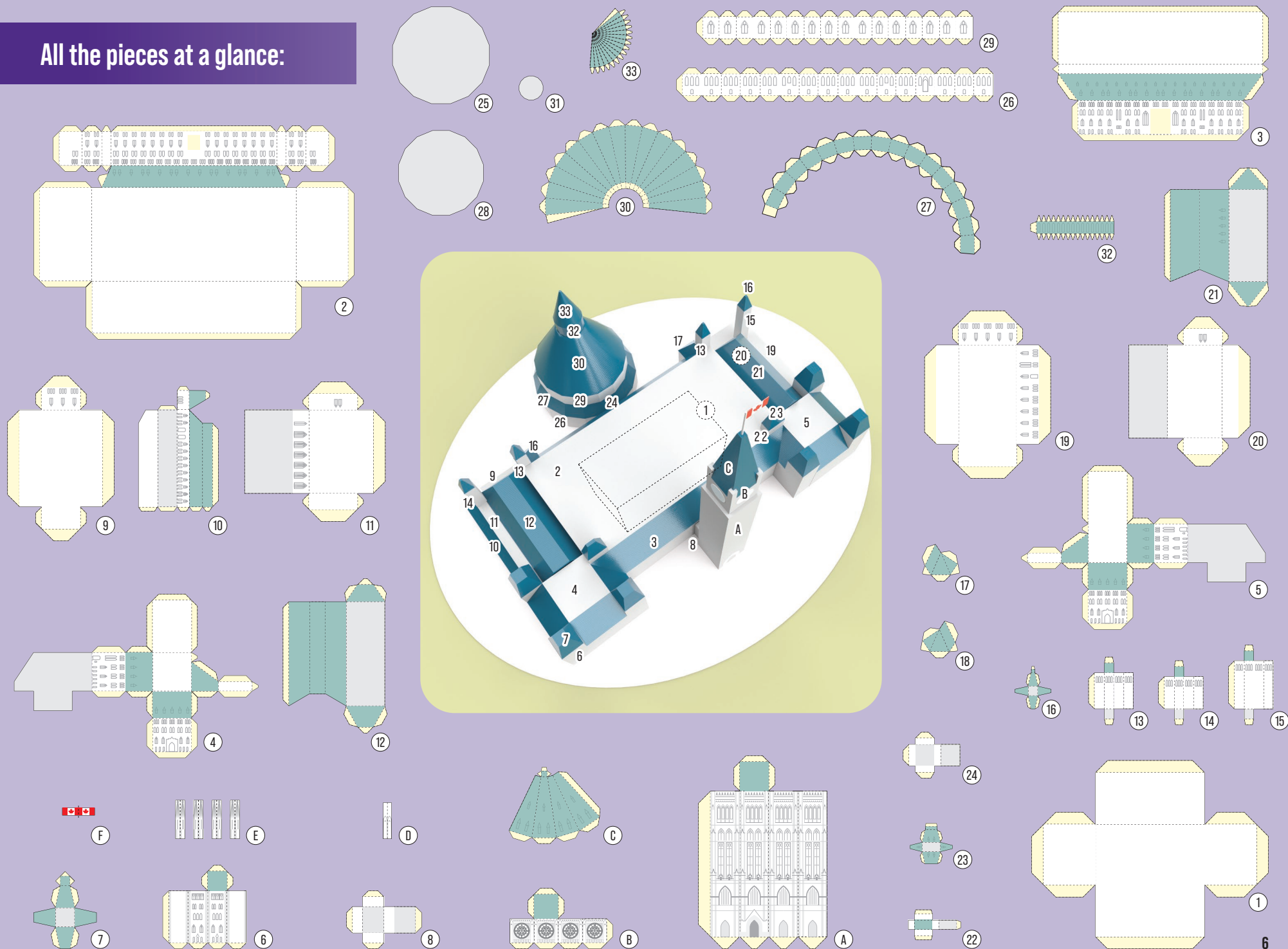


If you want to build only the Peace Tower,
you can mount it on this base:

Otherwise,
proceed to the next pages. ➡

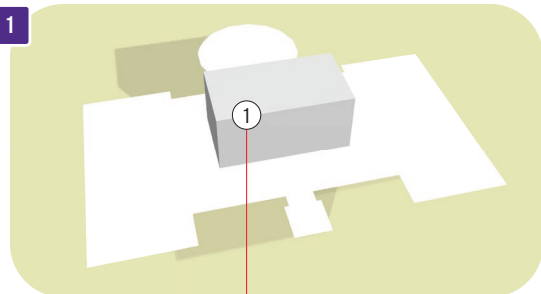


All the pieces at a glance:

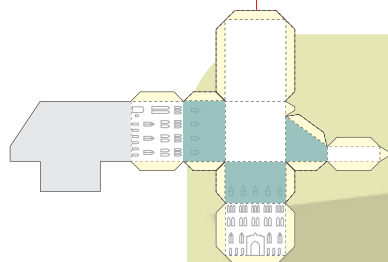
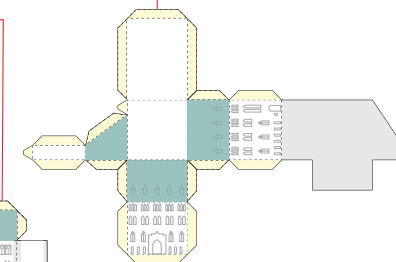
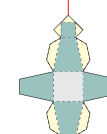
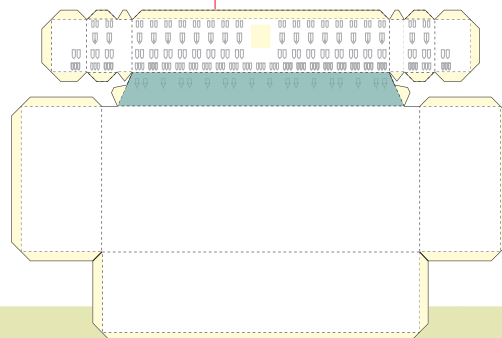
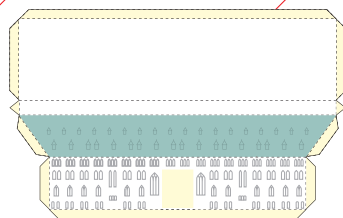
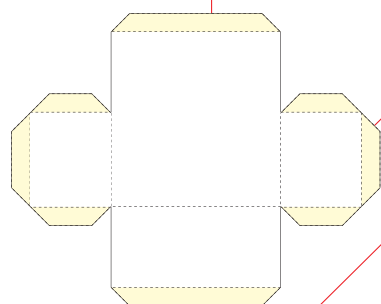
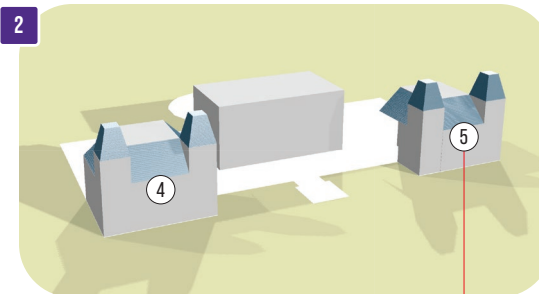


Centre Block: assembly instructions (1 of 3)

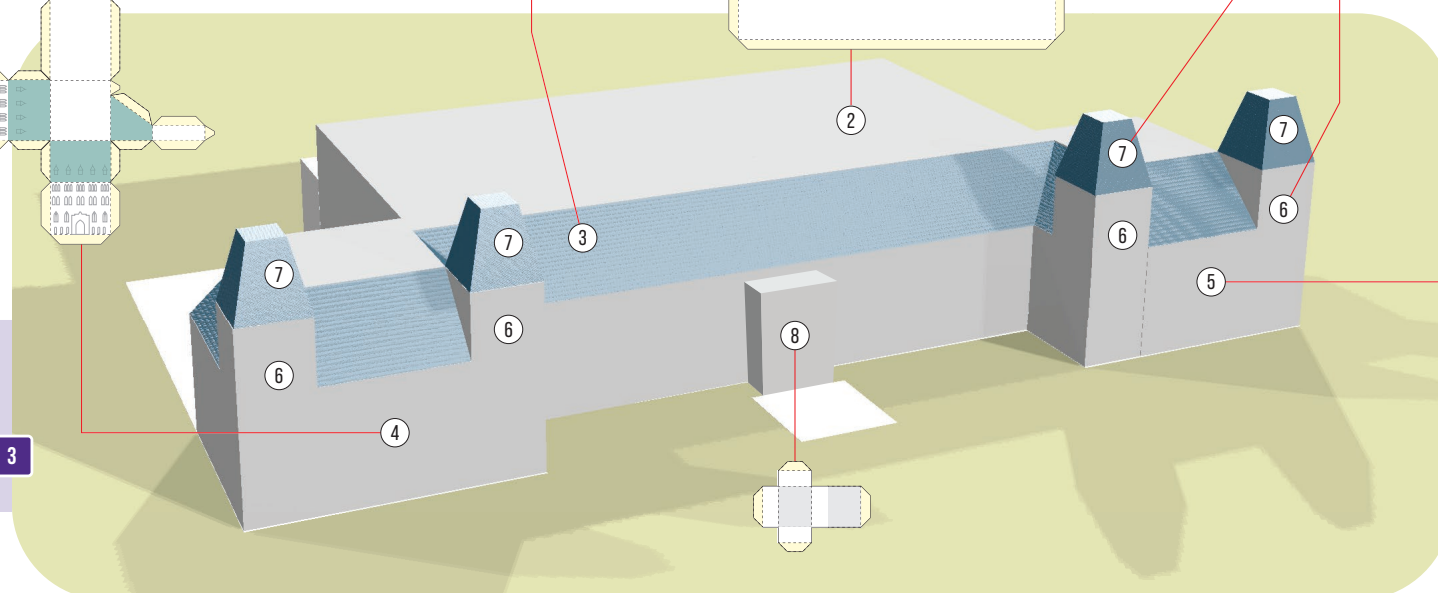
1



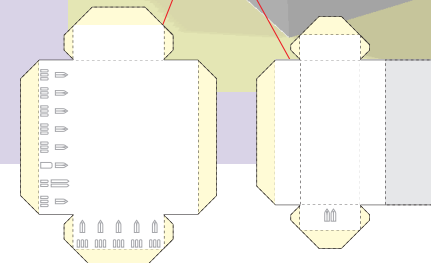
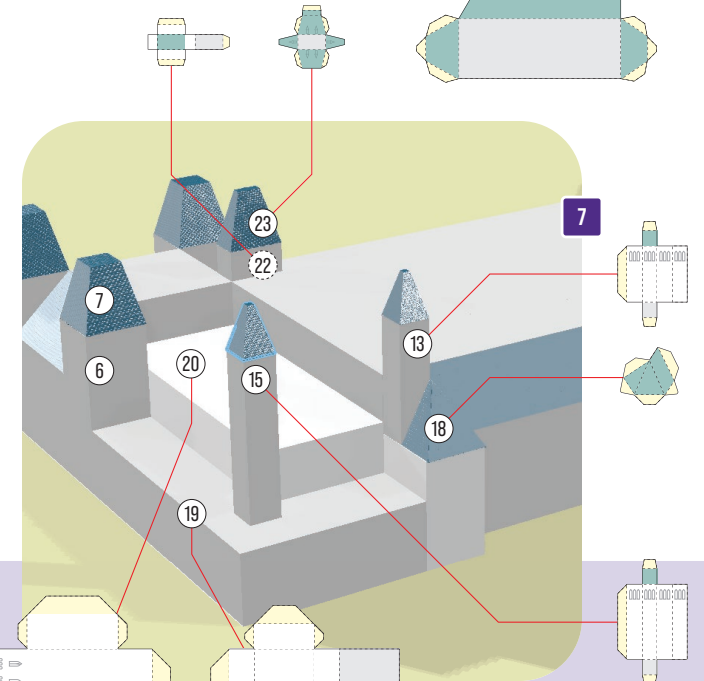
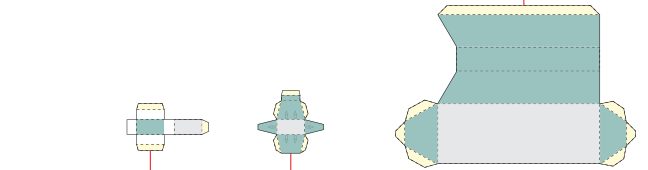
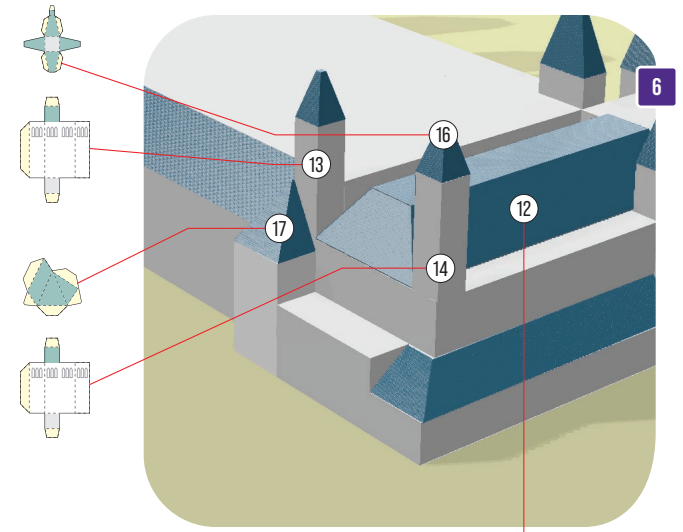
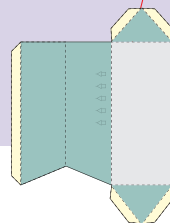
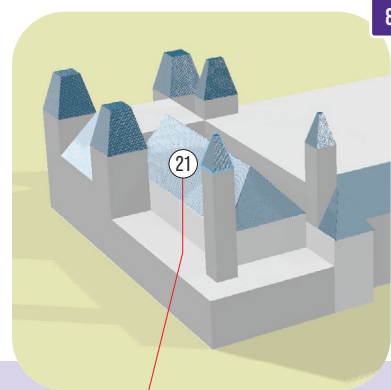
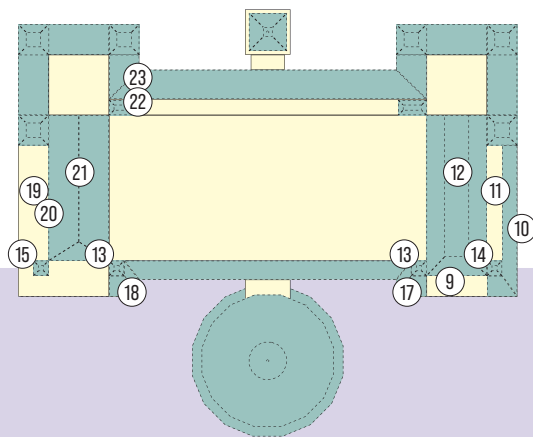
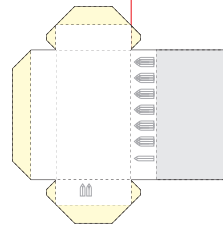
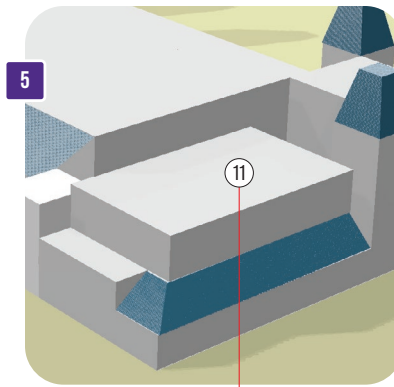
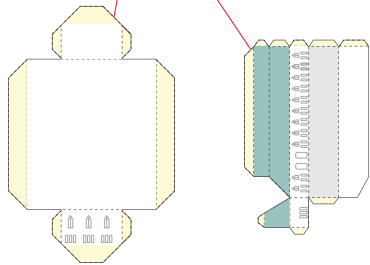
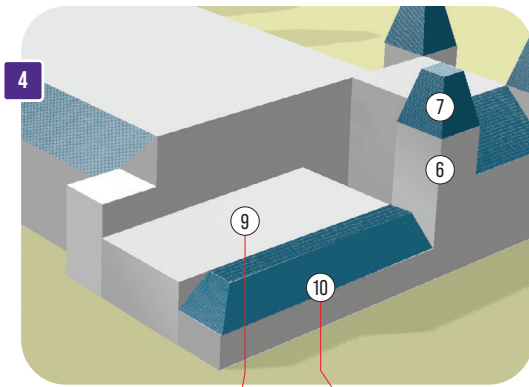
2



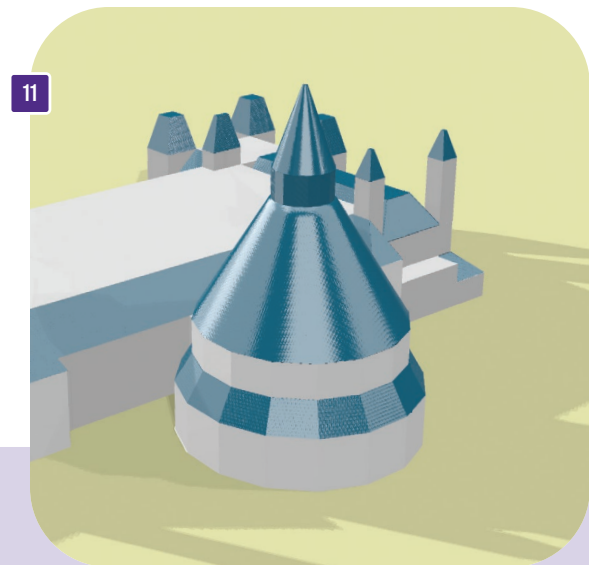
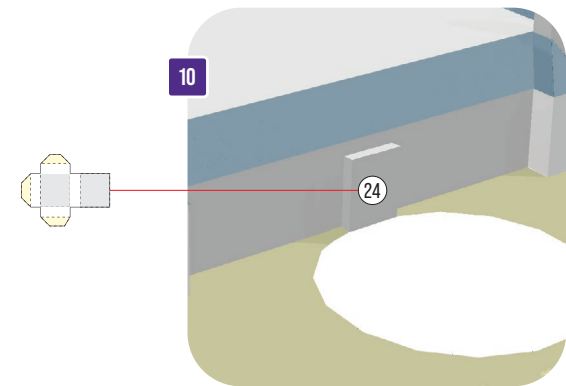
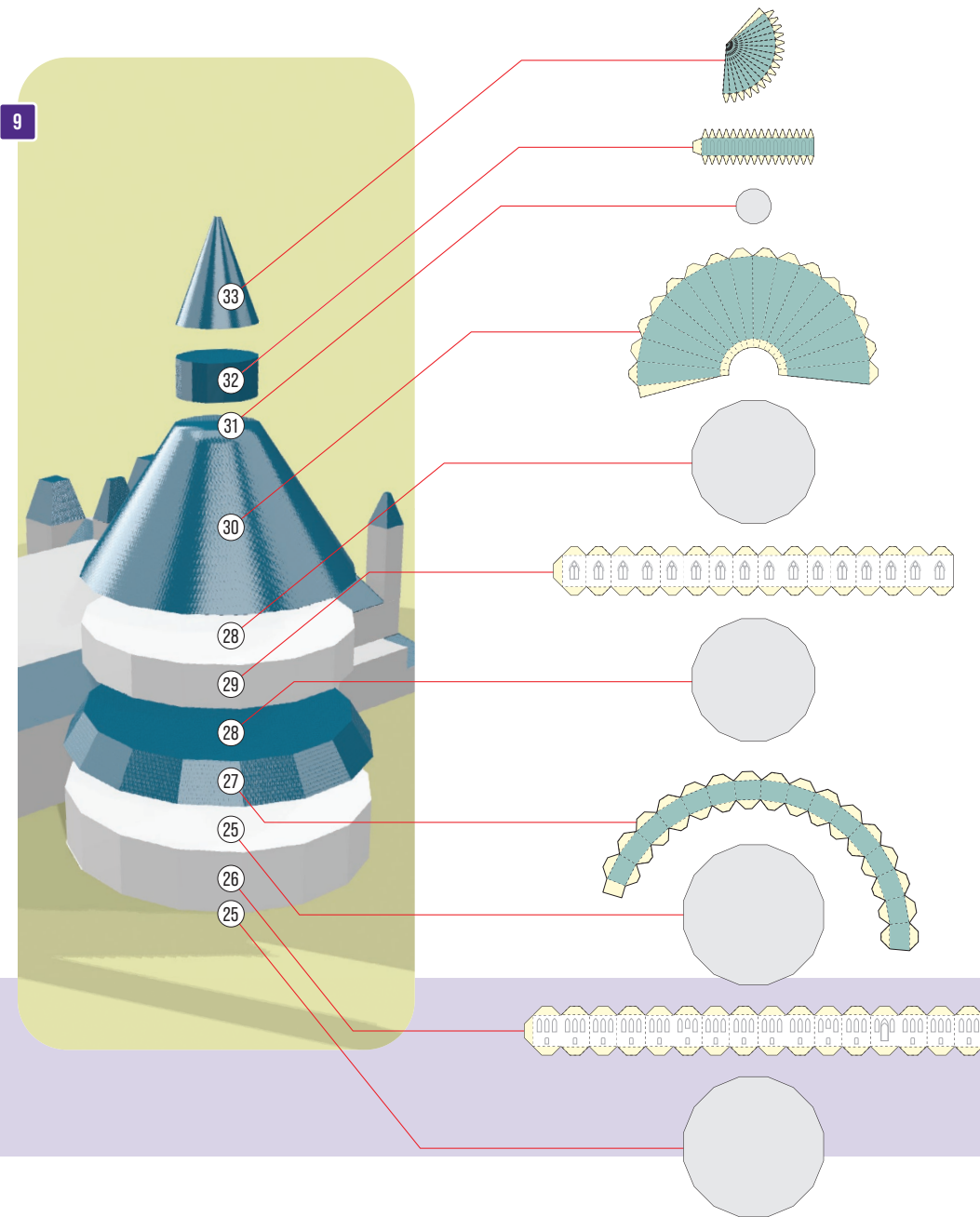
3



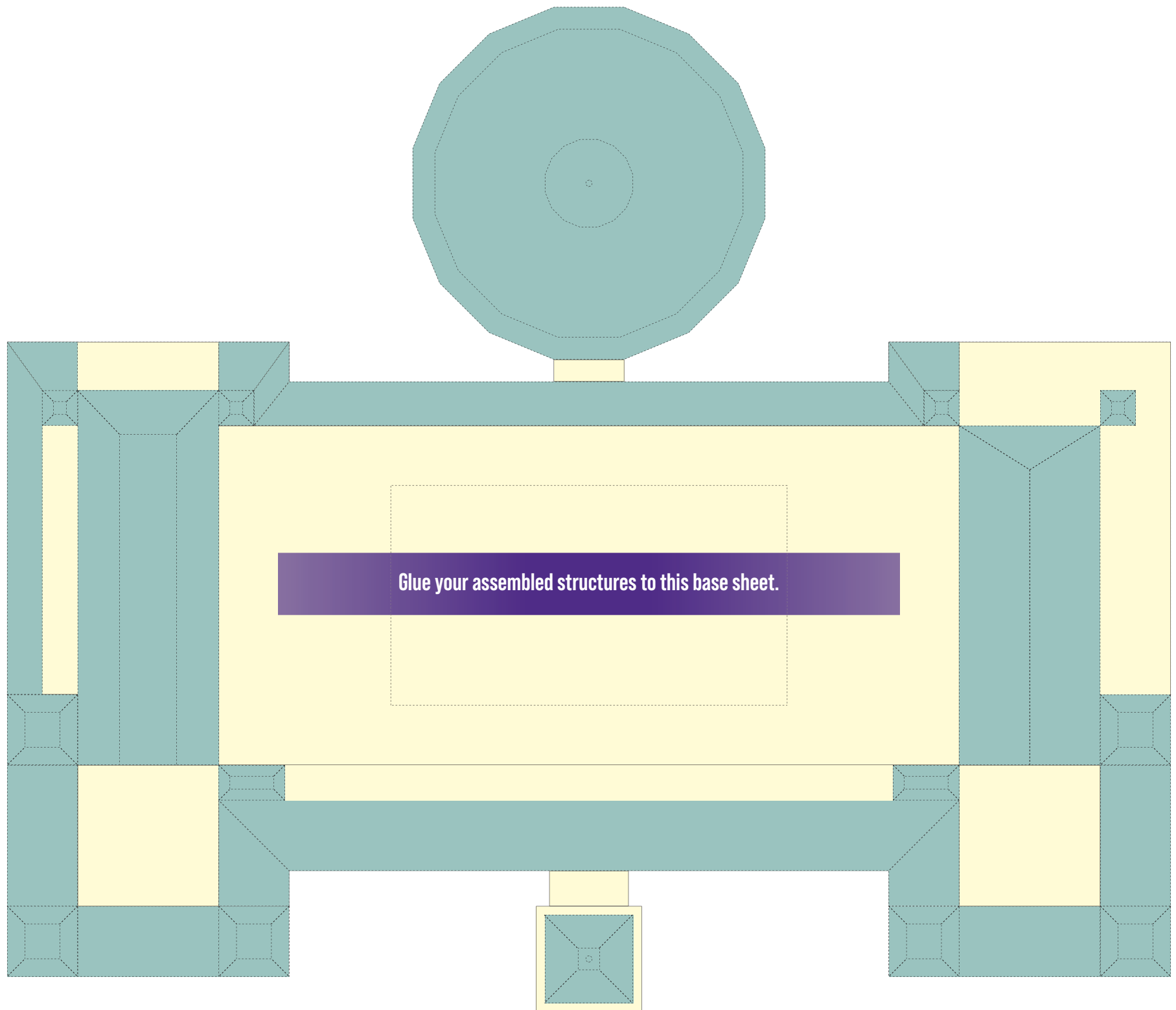
Centre Block: assembly instructions (2 of 3)



Centre Block (Library of Parliament): assembly instructions (3 of 3)

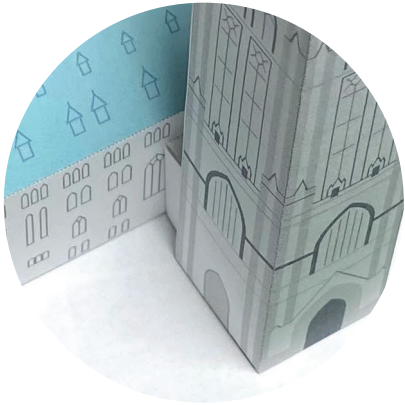
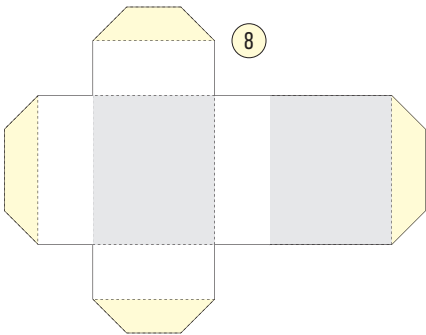
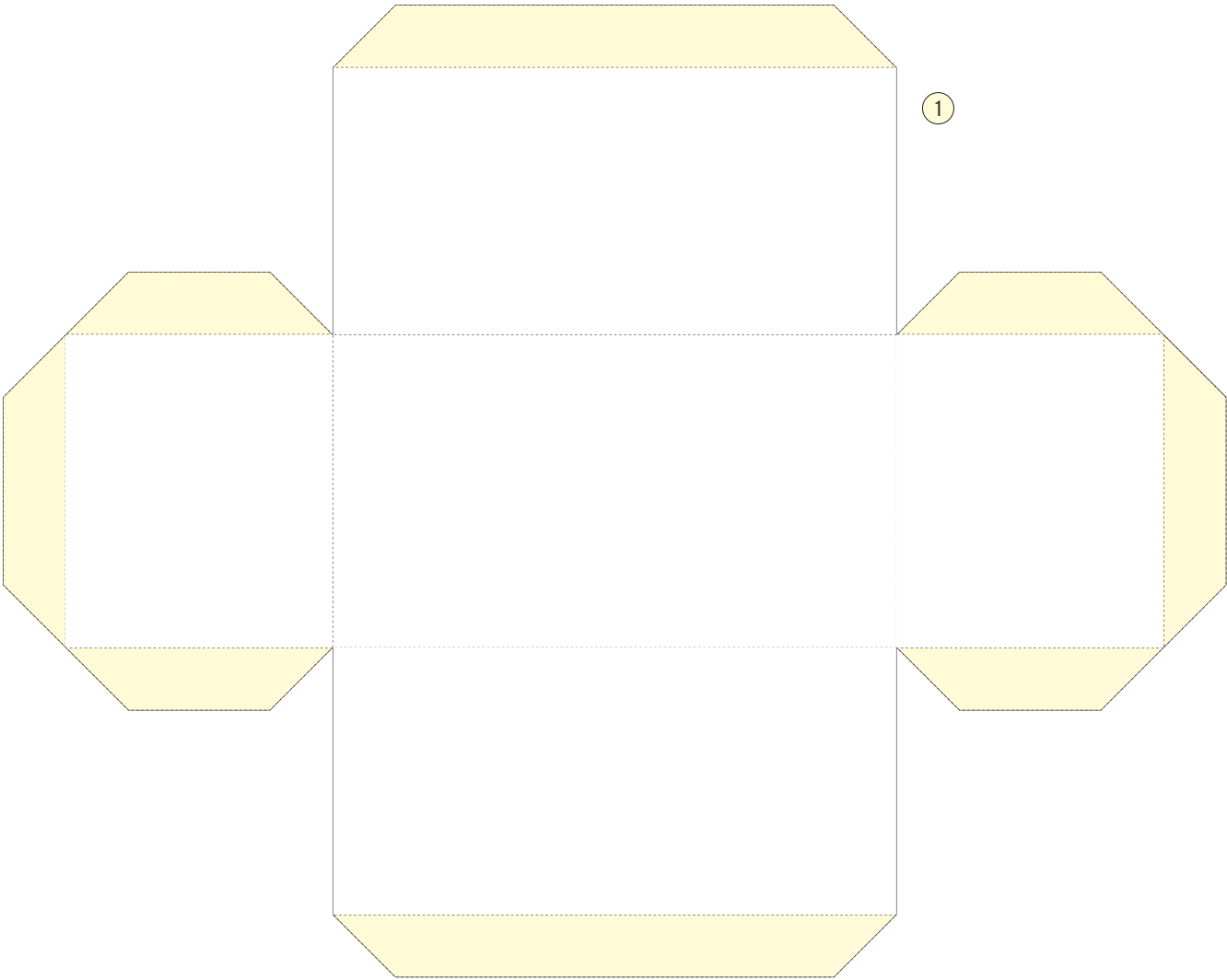


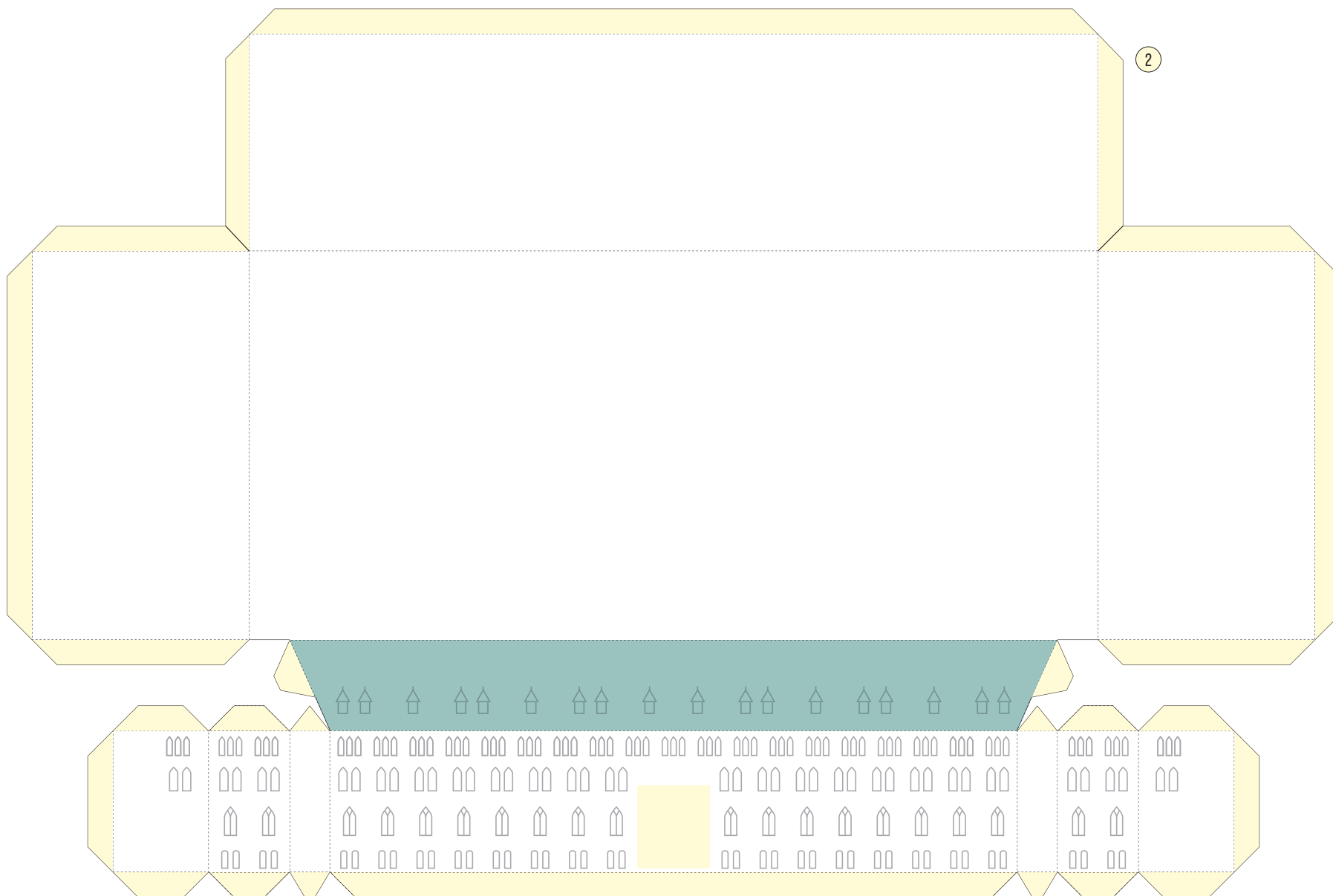


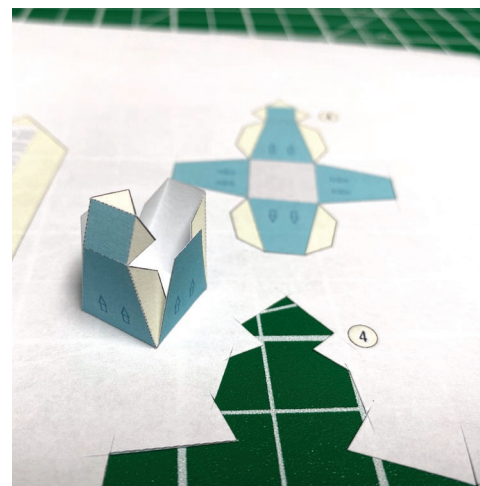
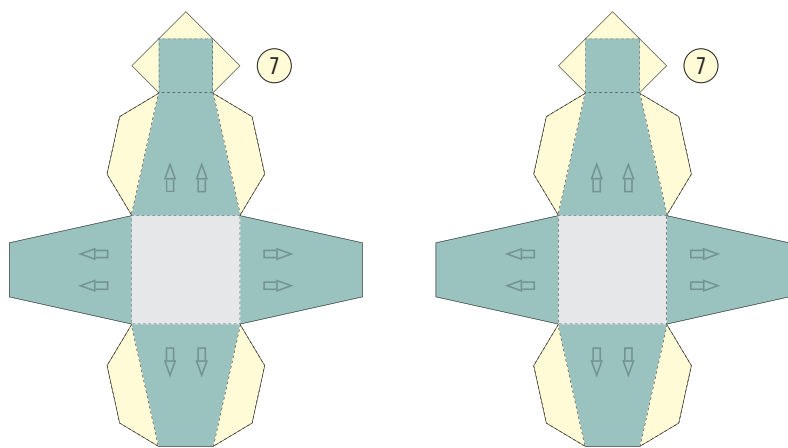
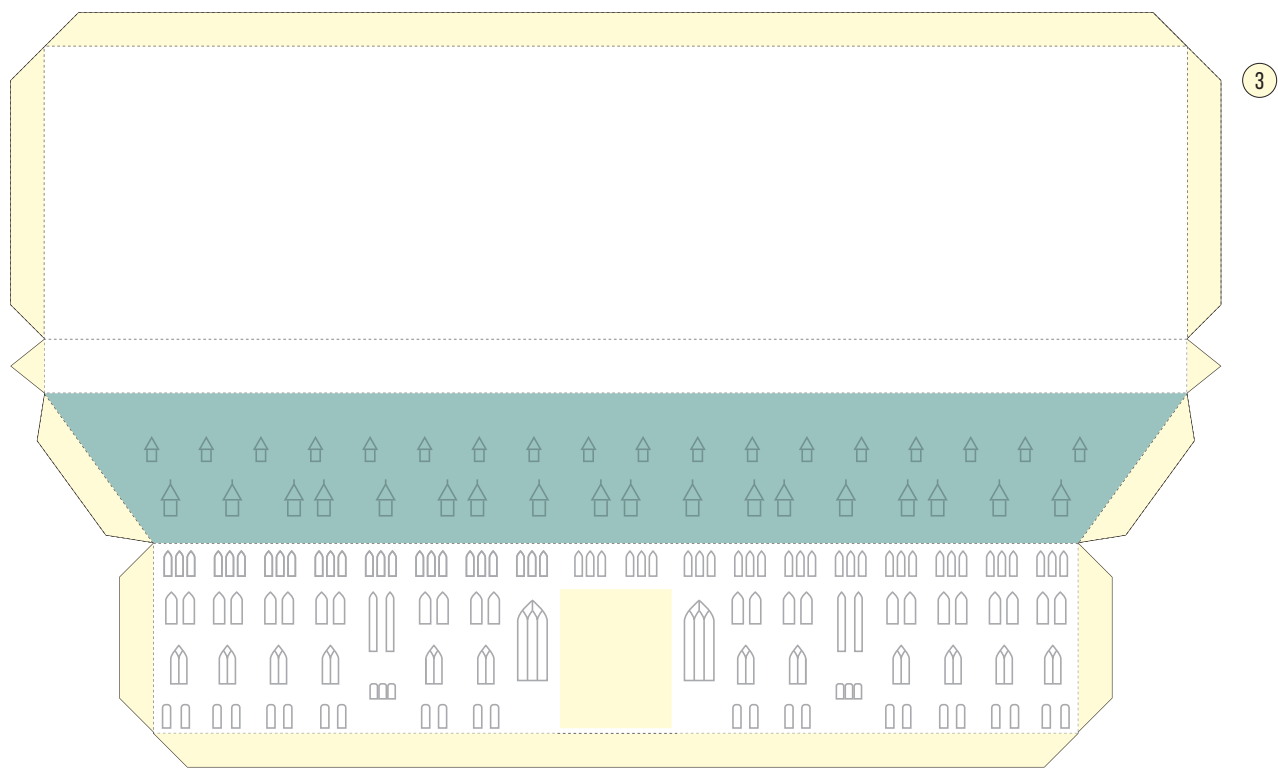


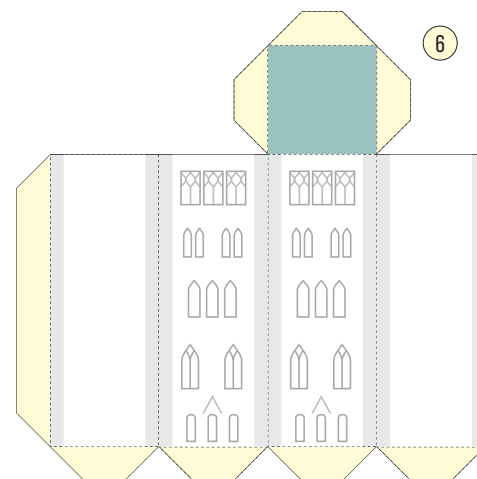
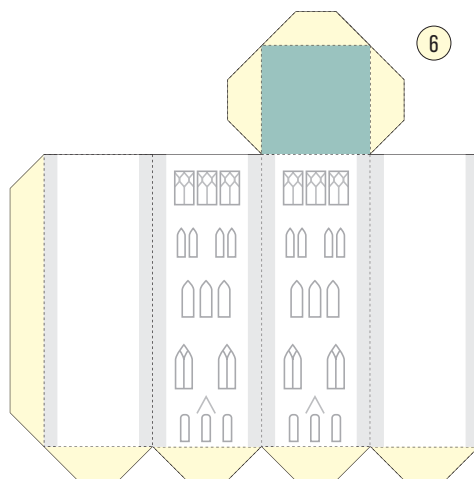
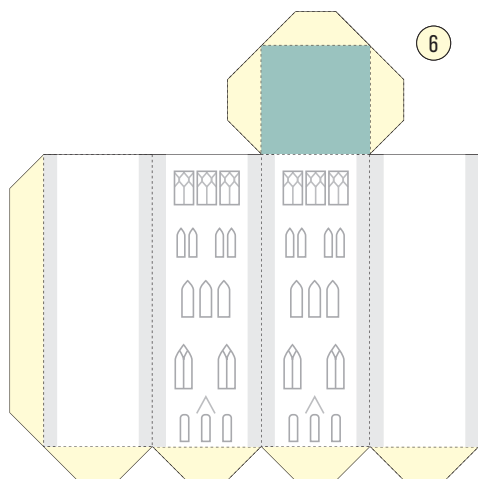
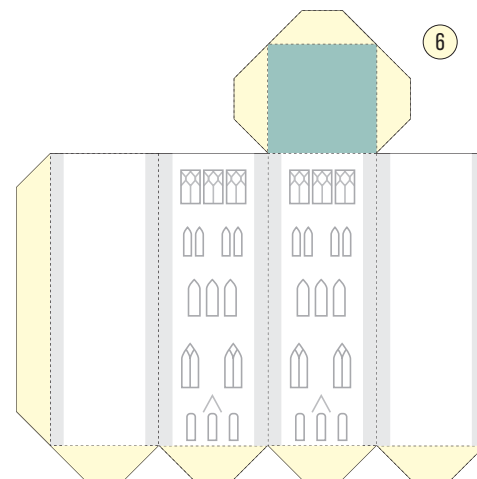
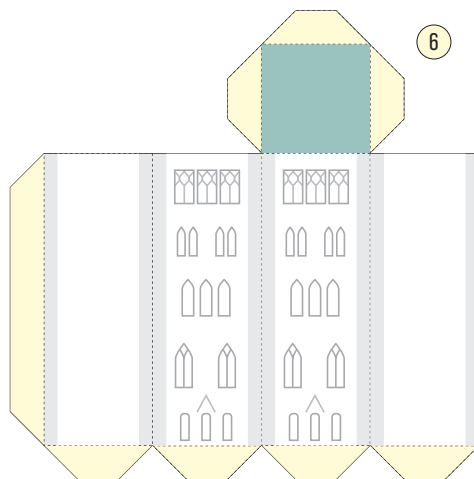
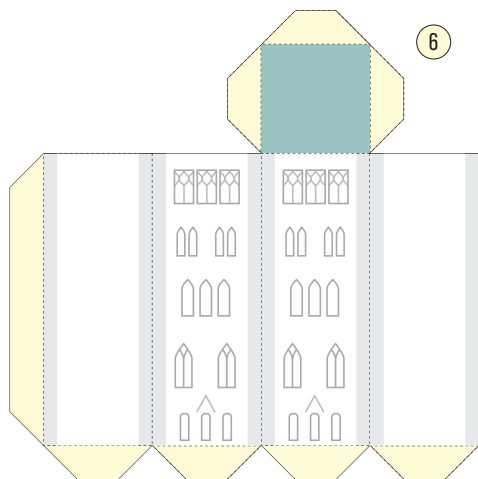
Centre Block: pieces to print, cut and assemble

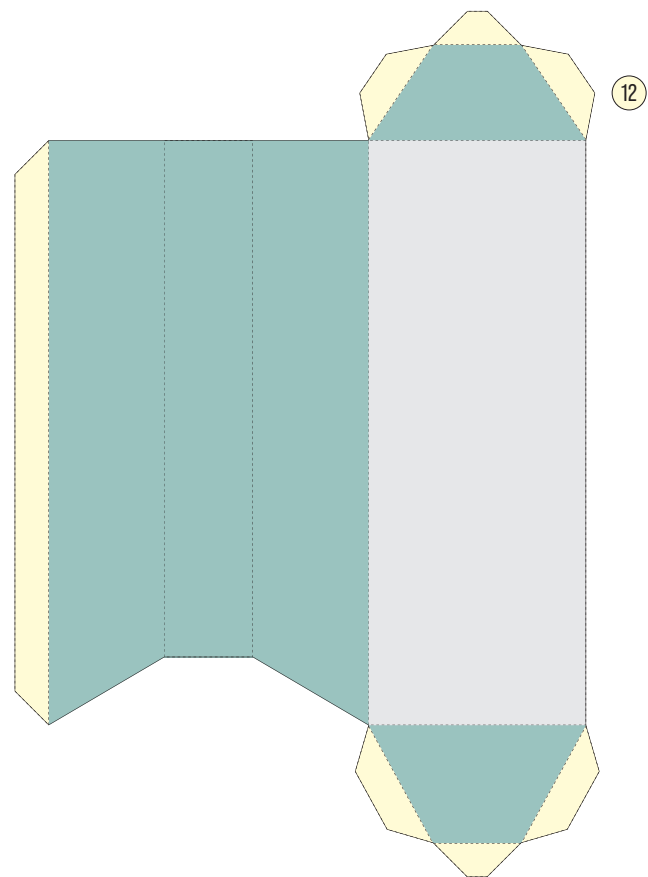
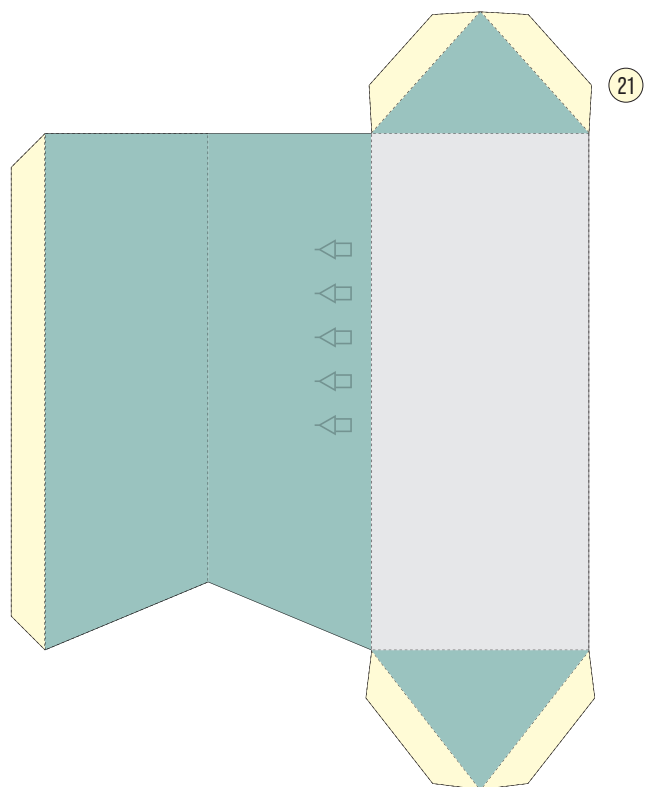
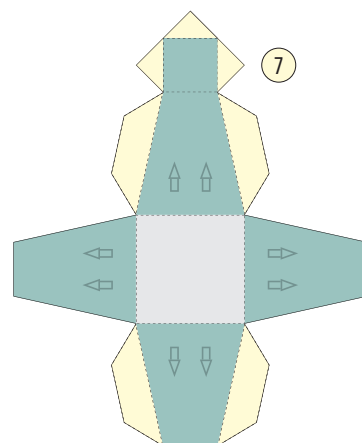
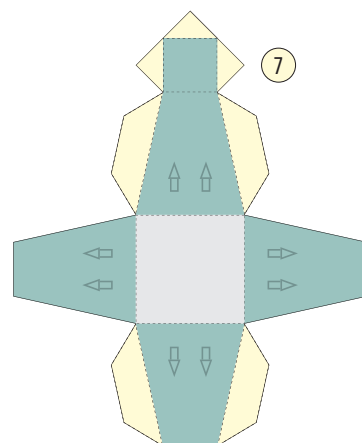
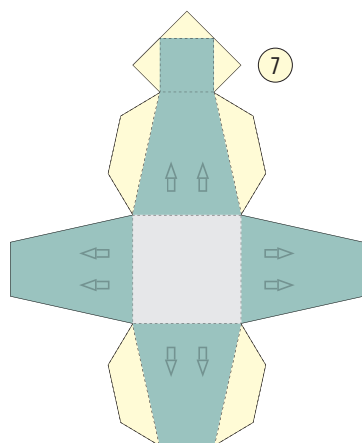
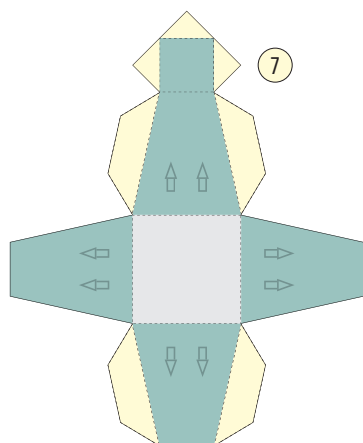
Please print pages 11 to 22 at actual size.

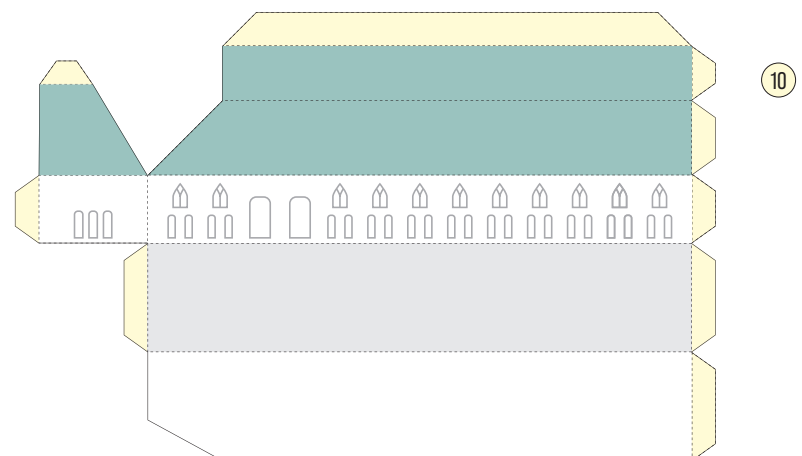
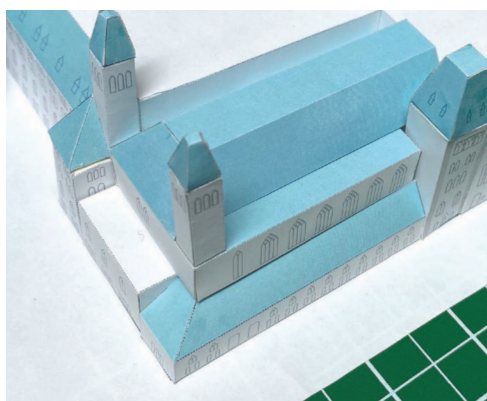
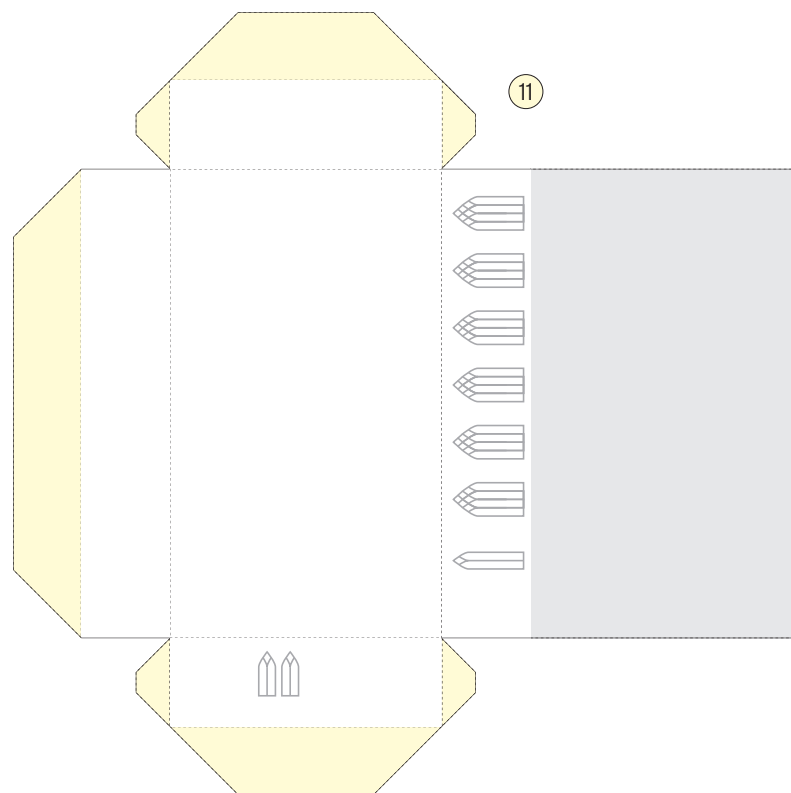
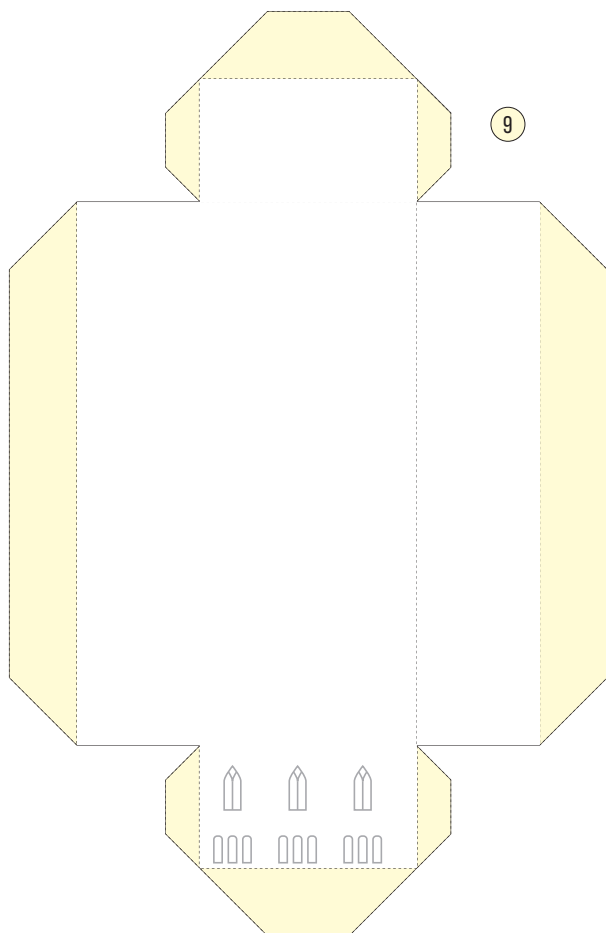


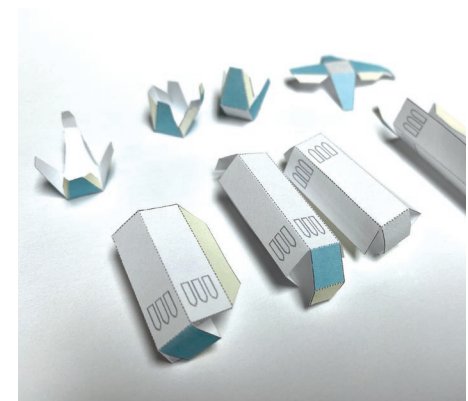
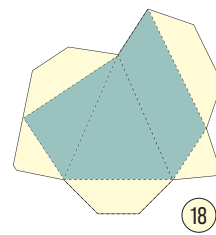
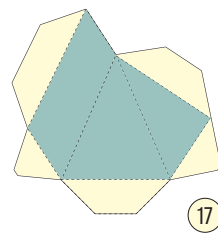
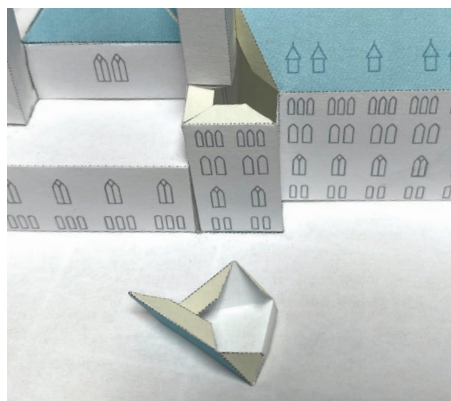
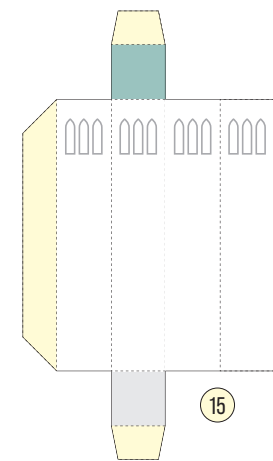
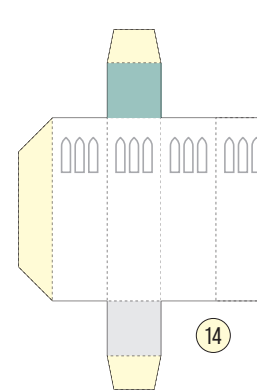
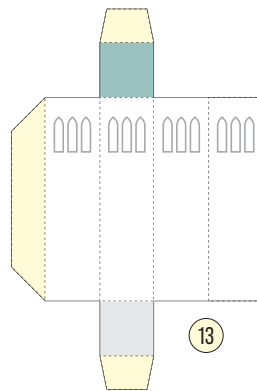
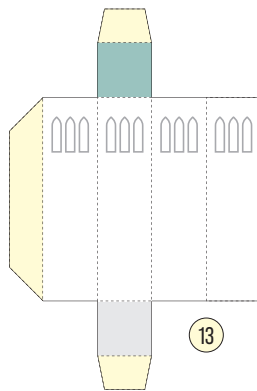
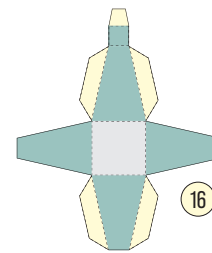
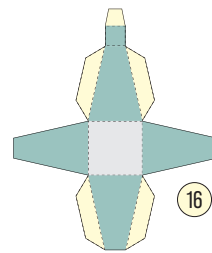
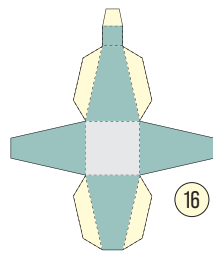
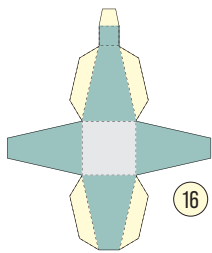


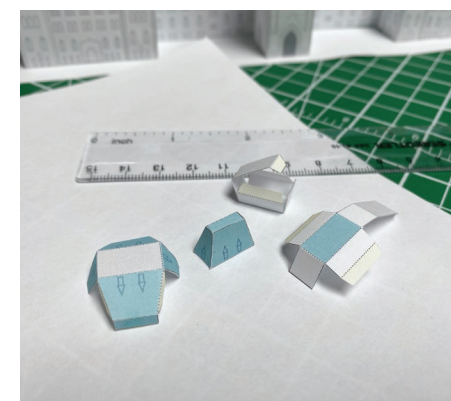
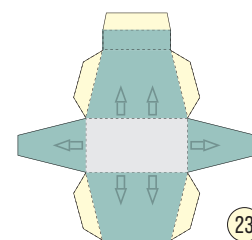
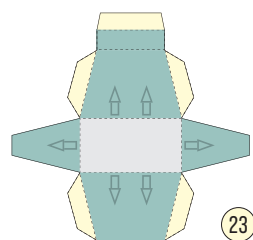
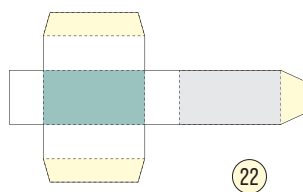
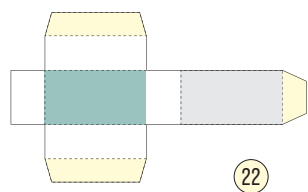
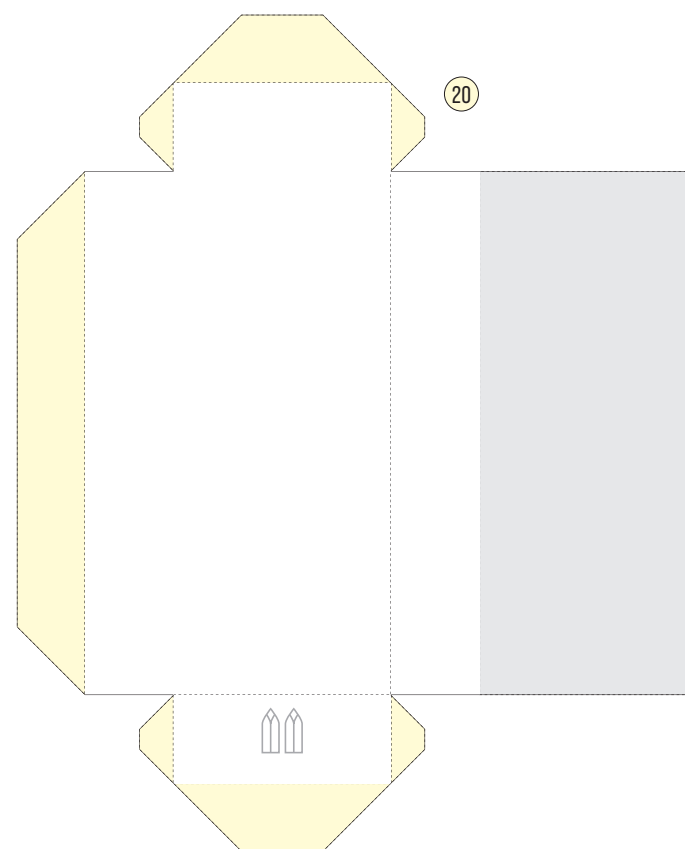
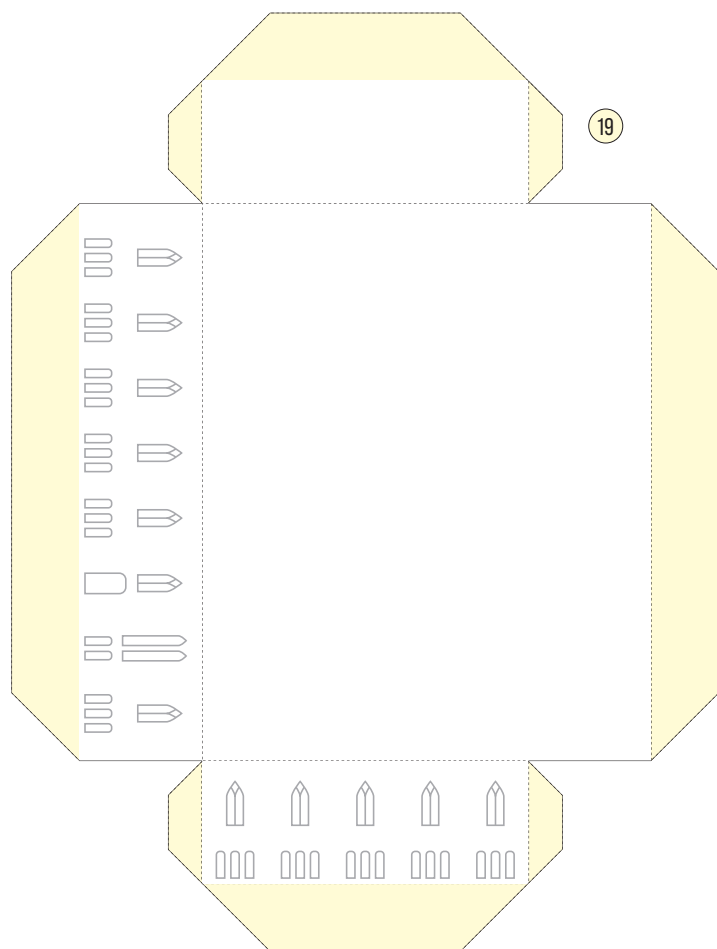


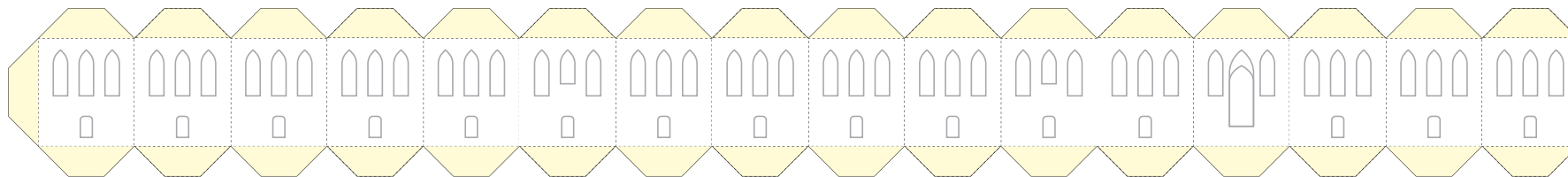




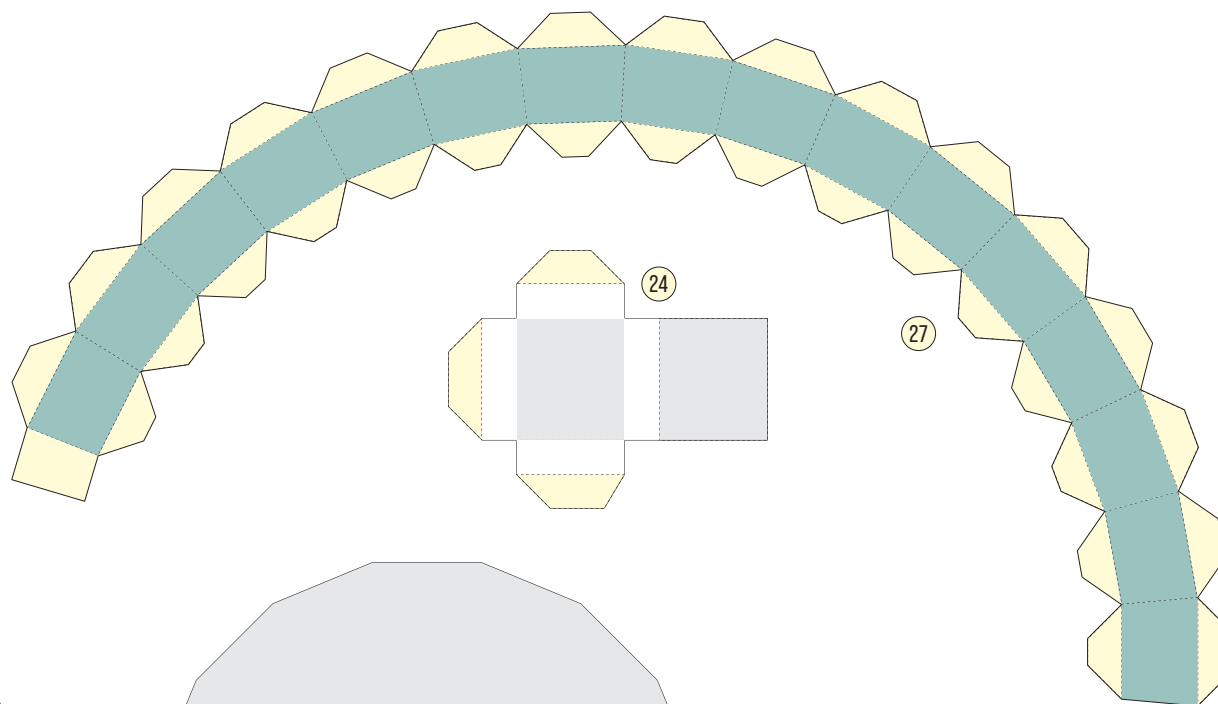
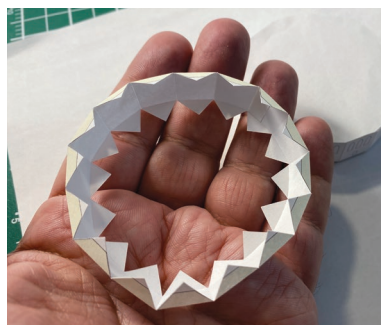




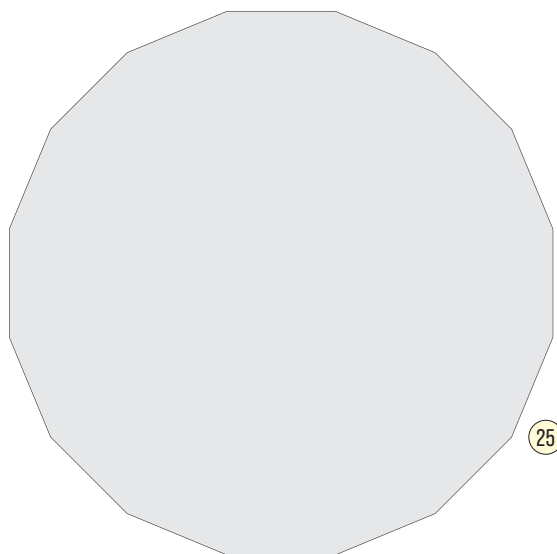




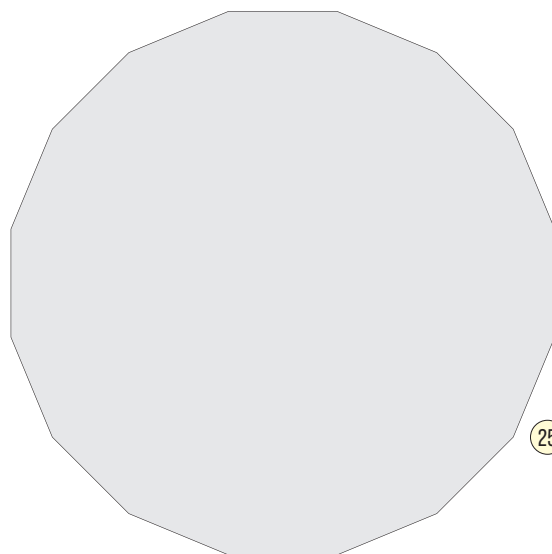
26



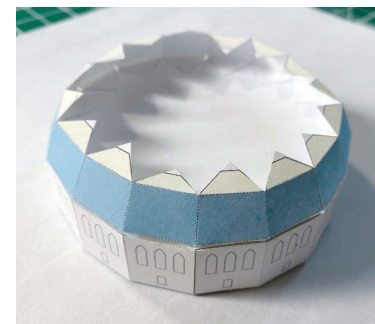
27

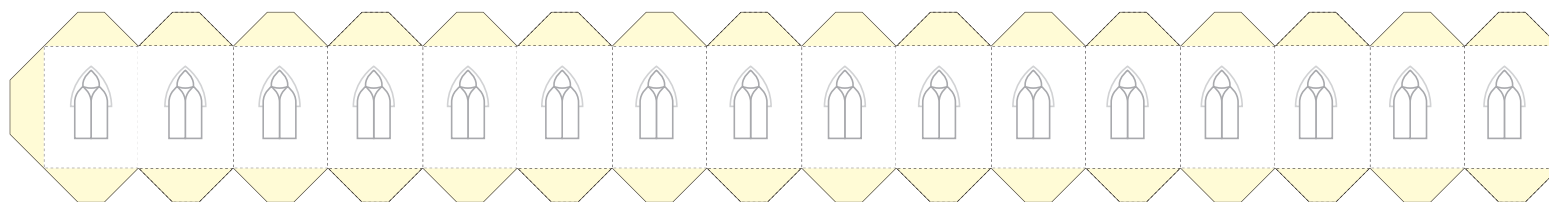


25

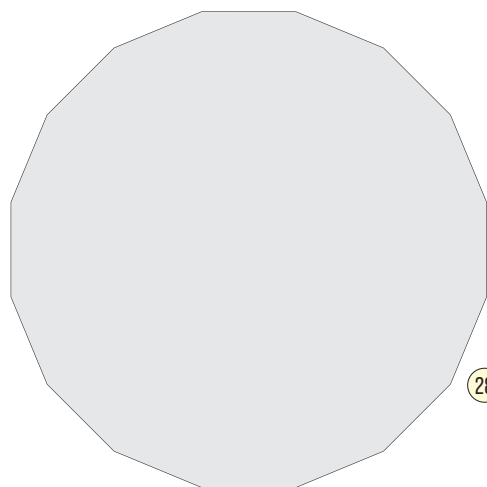


25

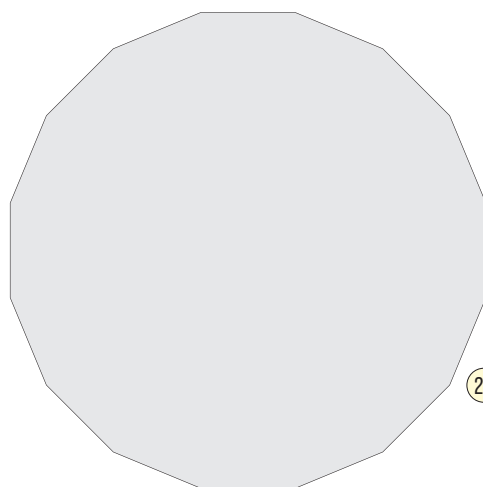




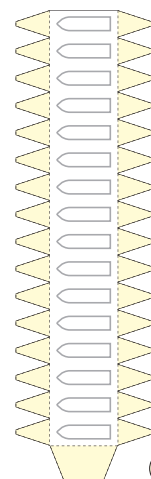
29



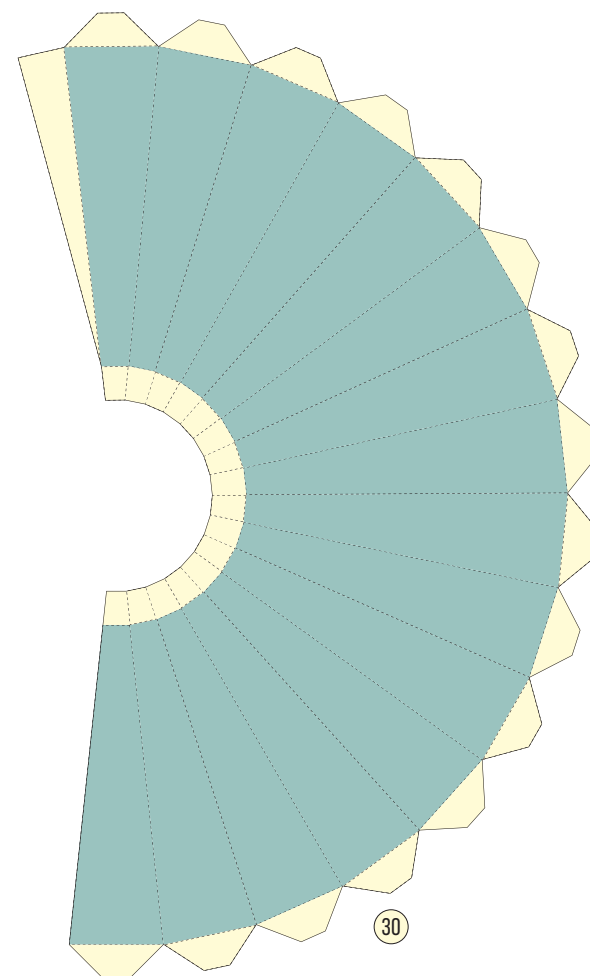
28



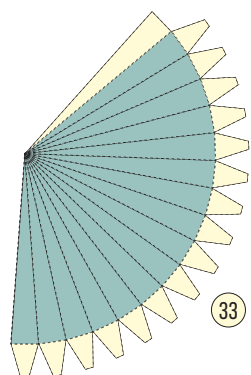
28



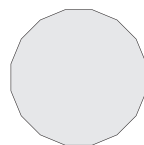
32



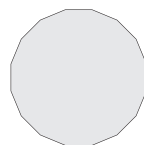
30



33



31



31

