



Canadian
Heritage

Patrimoine
canadien

Canada





Introduction

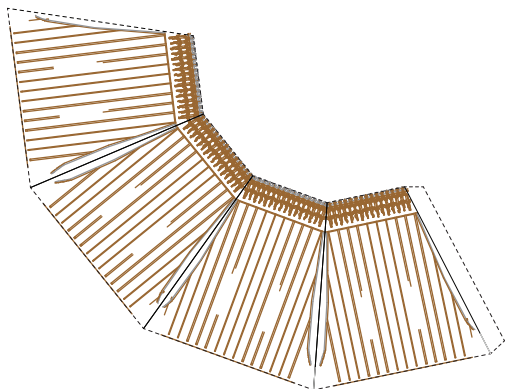
Can't travel to Parliament Hill?

Why not take Parliament Hill home instead with this home-built model of the Peace Tower and Centre Block of the Parliament Buildings in Ottawa.

Download and print the [templates](#), and follow the instructions in this document carefully.

What You'll Need

- A personal computer and printer
- 40 sheets of paper (8.5 x 11 in.)
- Scissors
- Clear tape
- A ruler (optional – to help with folding)
- Patience! Plan for 3 to 4 hours for assembly.



Turrets

Turret Roof 1

Cut along the dotted lines on the outside.

Fold along the black lines using a ruler or the square edge of a table.

Notice the flap on the last roof section: this flap will allow you to tape the turret roof to finish assembly.

Bottom Support 2

Cut along the dotted lines on the outside. This will create a series of tabs along the outer edge of the square.

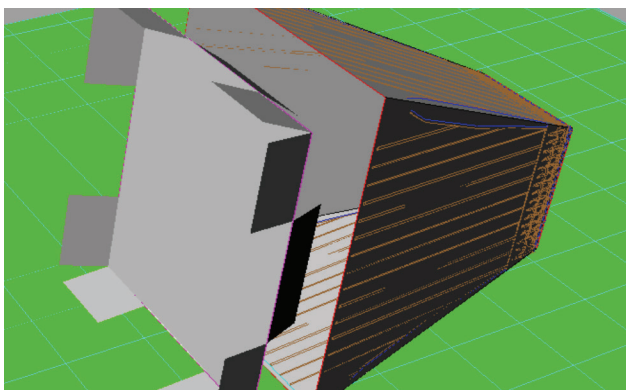
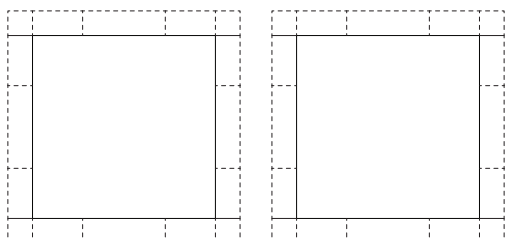
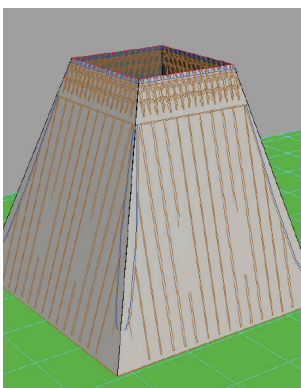
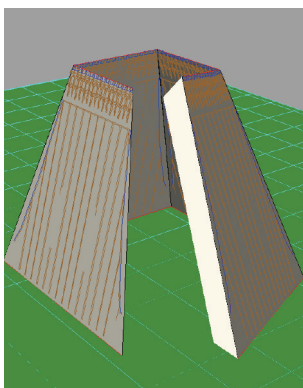
Fold the tabs in the middle of each edge of the square towards one side, and the tabs at the ends of each edge (near the corners) in the opposite direction.

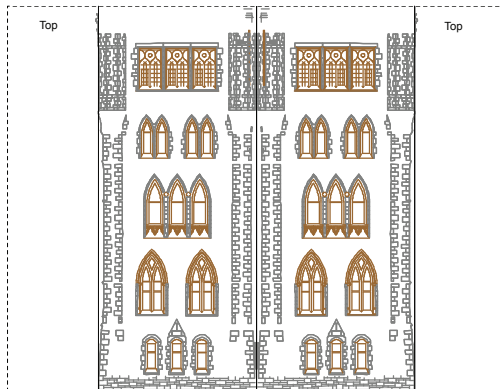
Fold along the black lines using a ruler or the square edge of a table.

Insert into the bottom of the turret roof.

Tape the tabs in place.

Repeat to create 4 turret roofs.





Turret Base 3

Fold along the black lines using a ruler or the square edge of a table.

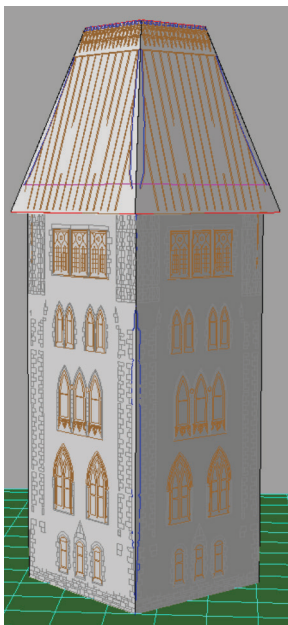
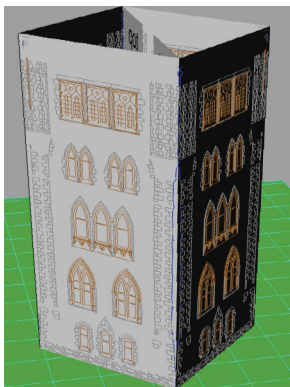
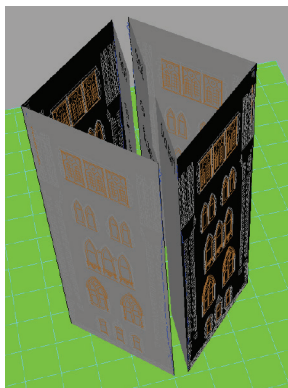
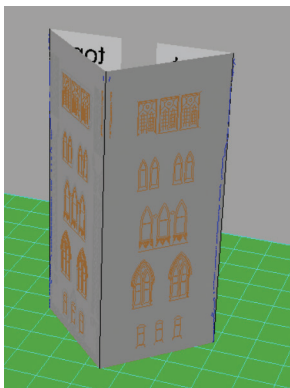
After all your sheets are folded, assemble the 4 turret bases.

Take 2 folded sheets and assemble them so that their top and bottom edges form a square. The non-illustrated sections of the folded sheets, labelled “Top”, should be folded towards the inside of the turret.

Secure the sheets by taping together the non-illustrated sections. These should be taped at the top and bottom as close as possible to the corners.

Be sure to make crisp folds so that the turret retains its shape.

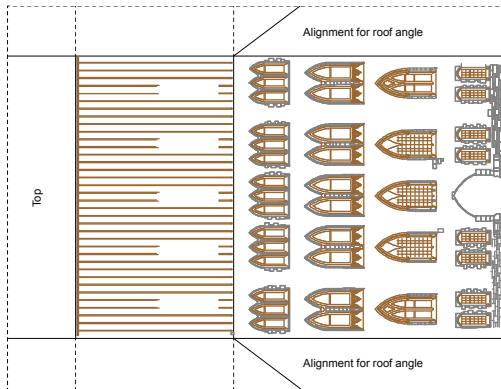
Repeat to create 4 turret bases.



Completed Turret

Add turret roofs by dropping them on top of the turret base.

You should have 4 completed turrets.



House of Commons and Senate

Entrances 4

Cut along the dotted lines.

Fold crisply along the black lines using a ruler or the square edge of a table.

Fold the top section over first, then fold the side sections inward.

Next, fold the tabs on either side of the top section against the side sections and secure them with tape.

Fold the roof section over so that the flap on the edge of the roof aligns with the roof angle guide line.

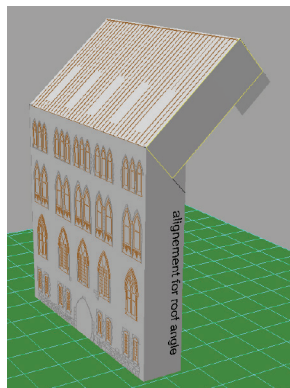
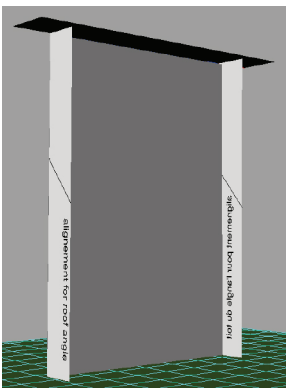
Secure the edge sections with tape.

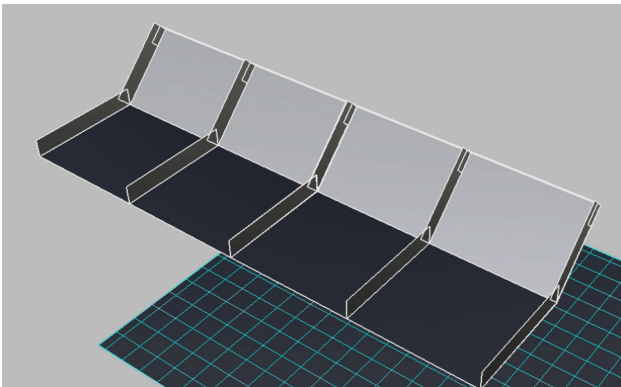
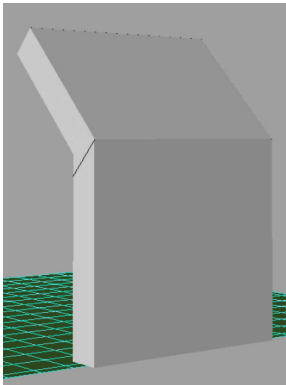
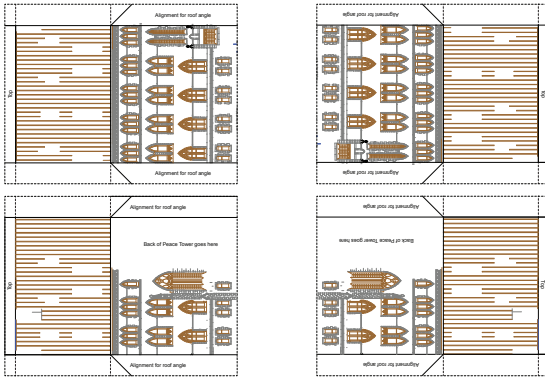
Repeat to create 2 panels.

Once the centre section is assembled, combine with the turrets by placing one turret on either side of the centre section. Do this twice to create 2 sets.

The upper edge of the roof of the centre section should align with the back of the turrets.

The turrets and centre section can be secured by taping the side tabs of the centre section to the turrets.





Centre Block

Inside and Outside Sections 5

This part of the model starts with the same steps as the House and Senate Entrance.

Cut along the dotted lines.

Fold crisply along the black lines using a ruler or the square edge of a table.

Fold the top section over first, then fold the side sections inward.

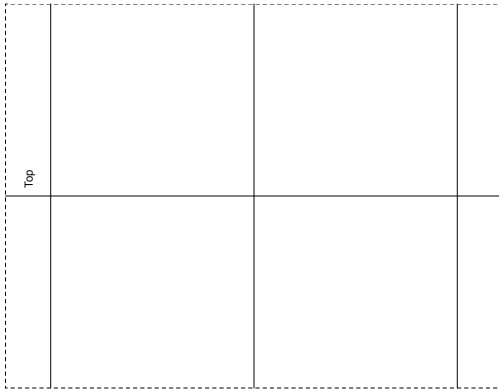
Next, fold the tabs on either side of the top section against the side sections and secure them with tape.

Fold the roof section over so that the flap on the edge of the roof aligns with the roof angle guide line. This will ensure a uniform roof angle across all roof sections.

Secure the edge sections with tape.

Repeat for all sections, creating 4 panels.

Afterwards, lay the panels down flat while ensuring that the bottom edges are aligned. Secure the inner flaps together with tape, from the back. This will ensure the stability of the assembled piece and create one long continuous panel.



Back Support 6

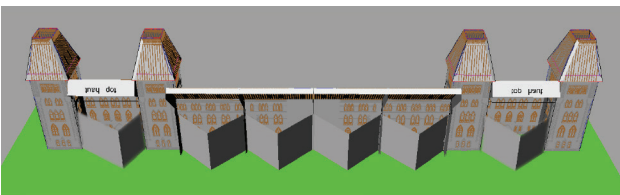
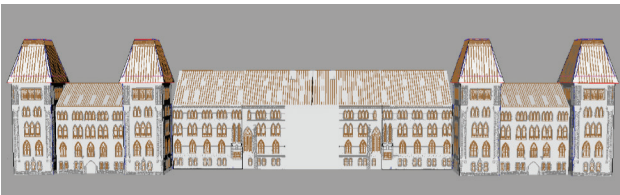
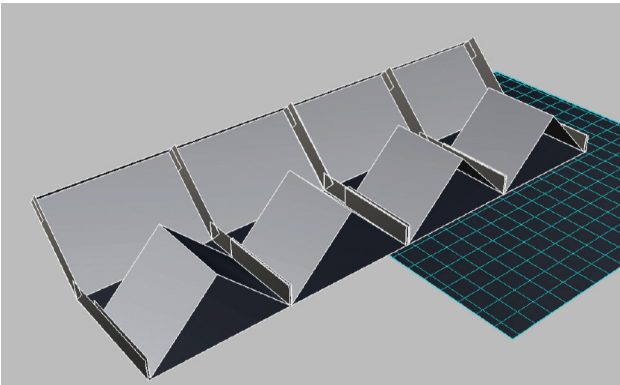
Fold the sheet in two lengthwise and then fold it again in the middle and at the sides, to create a “tented” shape with tabs on the side. Repeat to create 6 support pieces.

Afterwards, tape the support pieces’ tabs to the tabs on the back of the House of Commons and Senate entrance wall sections, as well as the Centre Block. These sections will provide support and stability to the Centre Block. Ensure that the bottom of each wall section is properly aligned.

Tape at the bottom and top.

Put it all together and you are halfway done!

Congratulations on making it this far! Now for the real challenge: the Peace Tower. Grab your scissors, your ruler, your tape and your skills. You’ve got this!





Peace Tower

Base 7

Fold crisply along the black lines.

As with the turrets (see previously), take the 2 folded sheets and assemble them so that their top and bottom edges form a square. The non-illustrated sections of the folded sheets, labelled “Fold Here”, should be folded towards the inside of the Tower.

Secure the sheets by taping together the non-illustrated sections. These should be taped at the top and bottom as close as possible to the corners.

Internal Reinforcement 8

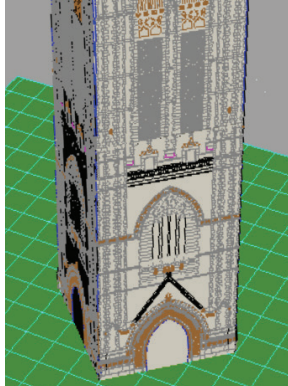
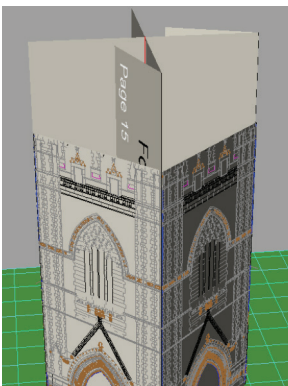
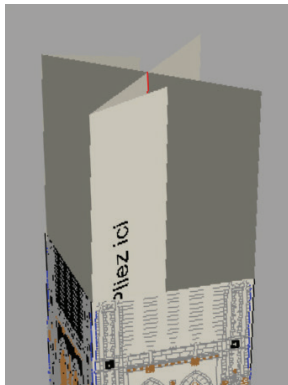
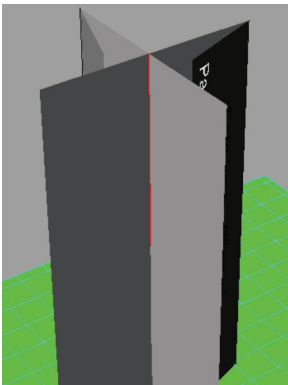
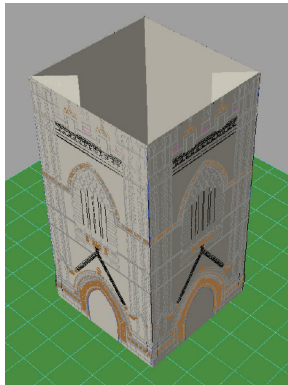
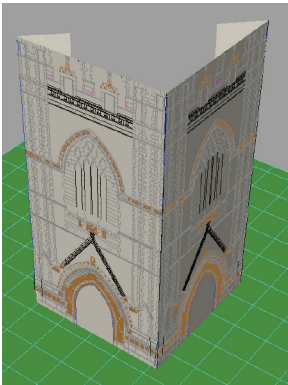
Fold crisply along the black lines. Cut along the dotted lines. Do not cut all the way through; the cut is meant to go only halfway.

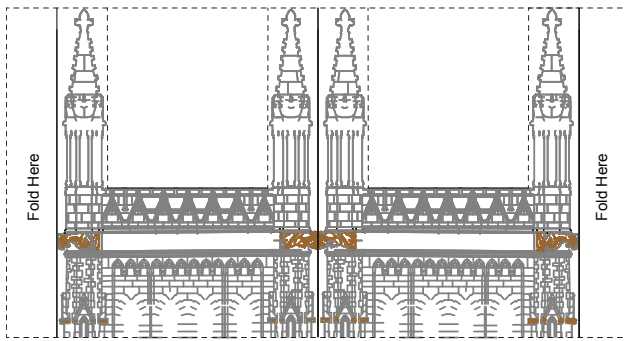
Slot the two sections into each other to create an X.

Then, insert this X in the Tower to add support and help align the middle section of the Tower.

Middle Section 9 10

Repeat all these steps for the middle section of the Peace Tower.





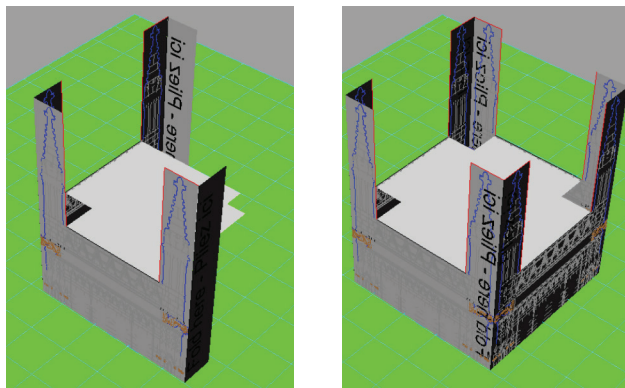
Top Section 11

Fold crisply along the black lines. Cut along the dotted lines.

Fold the centre sections between the pinnacles to form a platform to hold the tower clock.

Tape everything together using the folded flaps labelled “Fold Here”.

Install at the top of the tower sections assembled previously, by slotting over the internal reinforcement X.



Clock 12

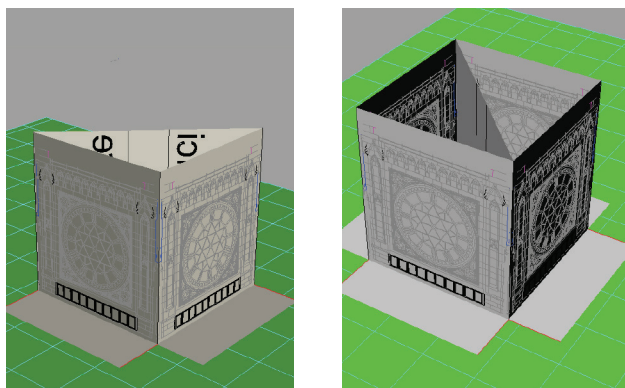
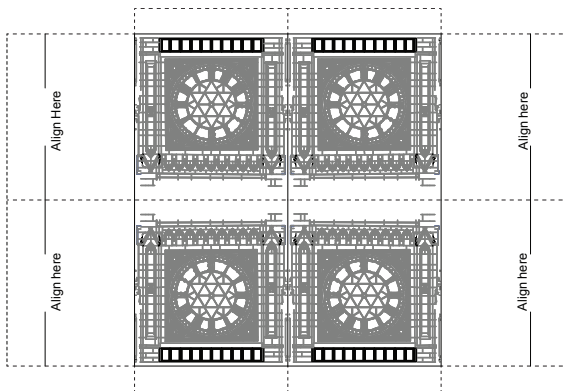
Cut page in half lengthwise, then cut along all the dotted lines.

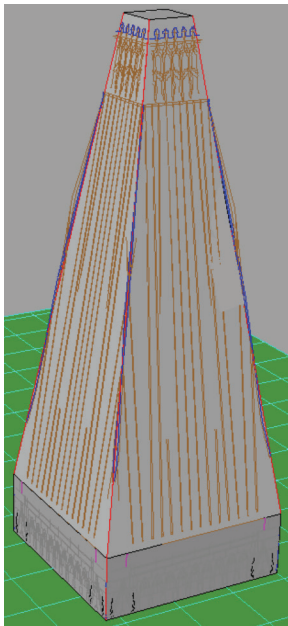
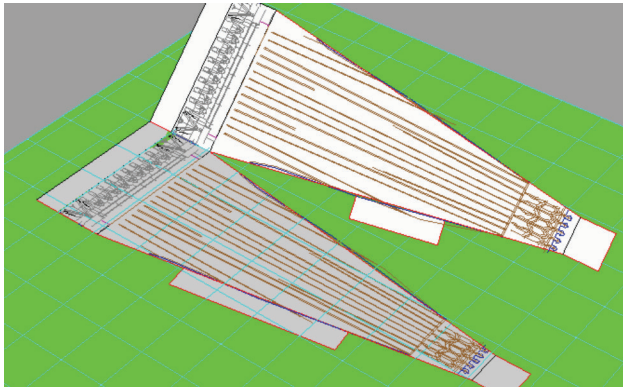
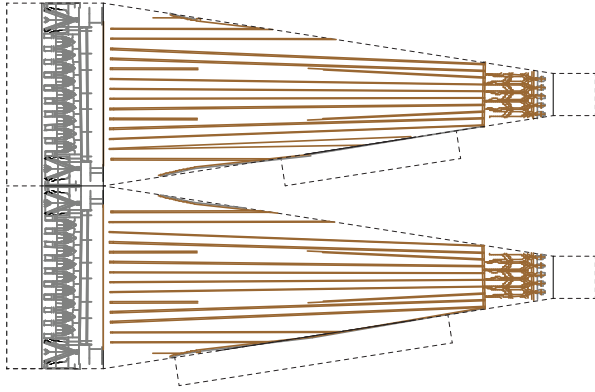
Fold crisply along the black lines to form 2 halves of the clock section.

Leave the bottom flaps folded to the exterior.

Each half of the clock section will be folded into a triangle. Superimposing the lines on the non-illustrated segments, labelled “Align Here”, will help you form an even right-angle triangle

Repeat for the second half of the clock section and tape solidly together, as close to the corners as possible.





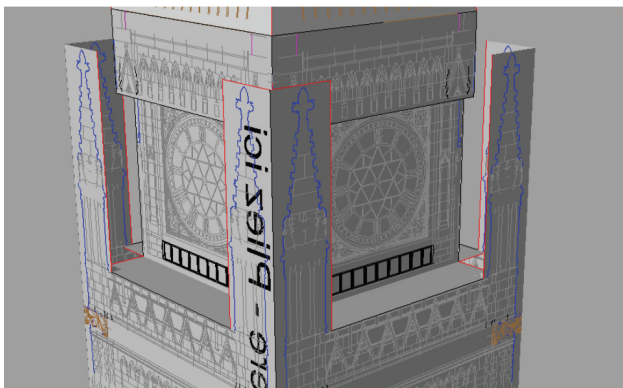
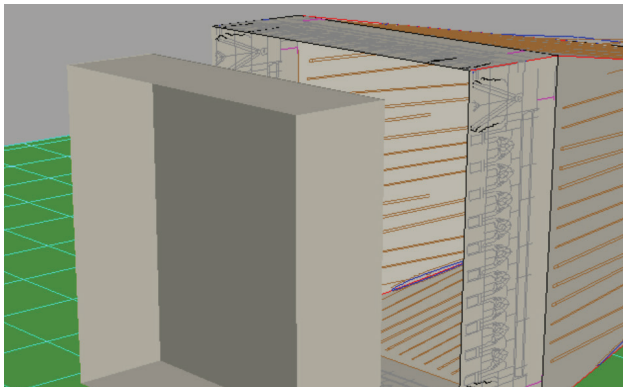
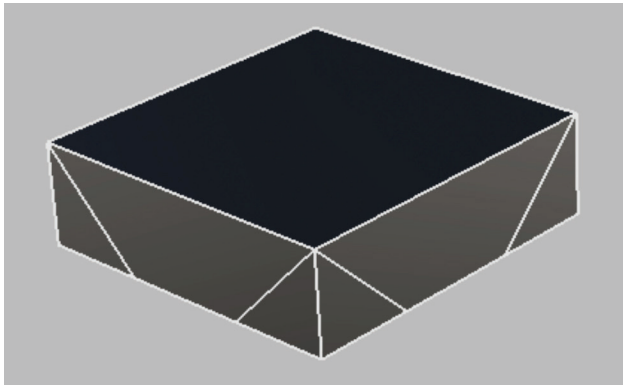
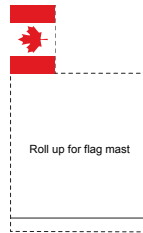
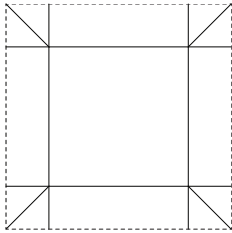
Roof 13

Cut along all the dotted lines.

Fold crisply along the black lines to form 2 halves of the roof section. Don't forget to include the blank sections at the bottom (wide end) of the roof.

Fold the blank tabs at the bottom of the roof inwards and upwards, to create a thicker ridge to the roof's base.

Assemble the two halves to create a full roof, securing each face by taping the tab to the back of the adjacent piece. Fold back the tabs at the top of the roof and tape together to form a flat top to the roof.



Roof Bottom Support and Flag 14

Cut along the dotted lines.

Fold crisply along the black lines.

The corner triangles should stick out and then be folded back to the sides and taped in place.

Then, insert this support section inside the bottom of the tower roof, and tape in place. The bottom edges of the roof and the support section should line up.

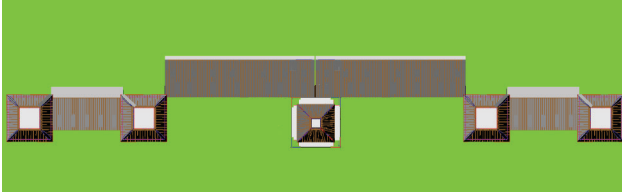
To make the flag at the top of the roof, roll up the large section of the flag cut-out into a flag mast, leaving the flag section to fly freely. Use scissors to cut out some small flaps at the bottom of the mast, to tape the flag mast to the top of the roof. Trim accordingly so that the flaps rest flat.

Roof Stack

You've done it!

Stack the whole roof assembly by slotting the slanted roof on top of the clock section, and insert in the top section of the Peace Tower. The folded flaps should help centre the top assembly behind the top pinnacles.

Secure the Peace Tower to the middle of the Centre Block wall section and tape it in place. This completes the assembly of your model of the Parliament!



Completed Project

As it is made of paper, you will need to be careful while moving the model.

To proudly display your Parliament, position it as the plan suggests.

Share your completed 3D model on social media by using #NorthernLights!