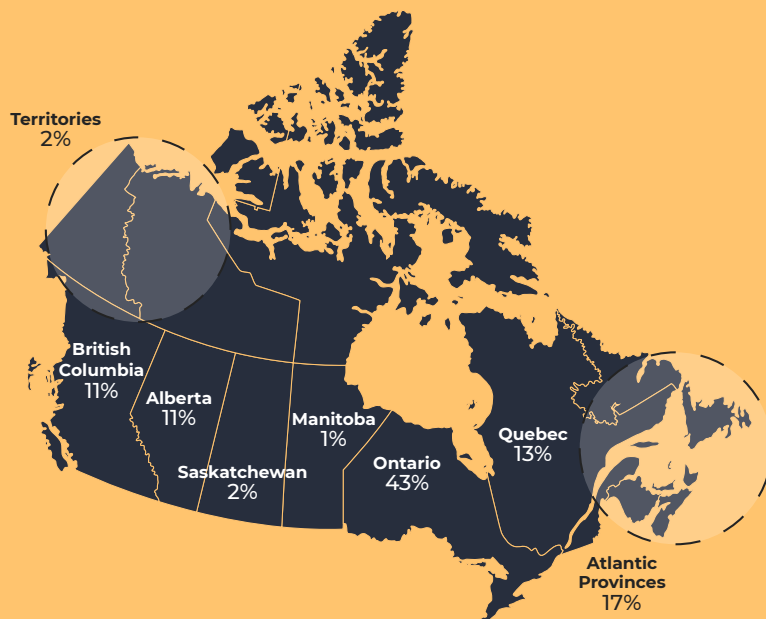


How has COVID-19 impacted access to STBBI-related services, including harm reduction services, for African, Caribbean and Black people in Canada?

Findings from the *Survey on the Impact of COVID-19 on access to STBBI-related services, including harm reduction services, for African, Caribbean and Black people in Canada*.

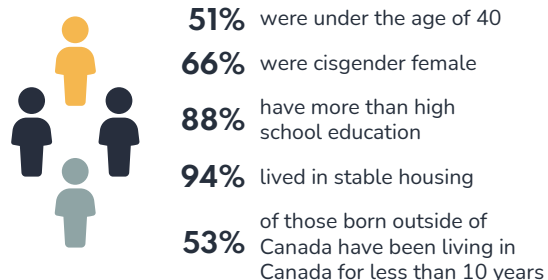
The Public Health Agency of Canada, in collaboration with community stakeholders*, conducted an online survey from May to July 2021.

*See Acknowledgements below for more information on our collaborators

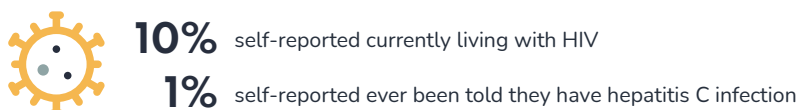


Who participated?

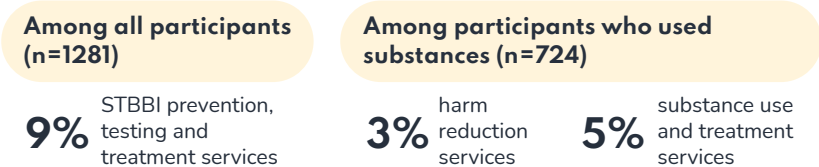
1556 people who self-identified as African, Caribbean or Black



HIV and hepatitis C prevalence



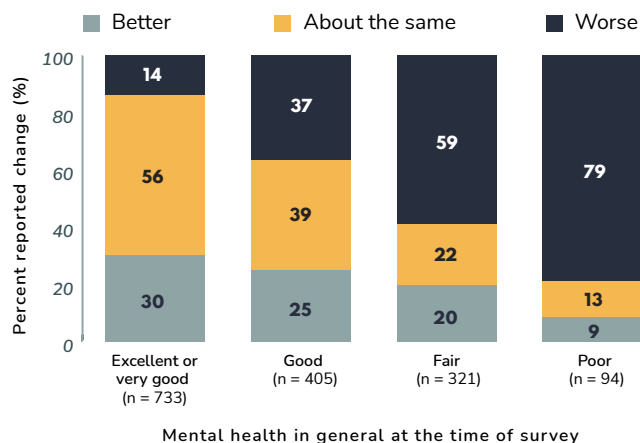
Accessed or wanted to access



Mental health status

79% with poor mental health in general reported their mental health worsened during the pandemic

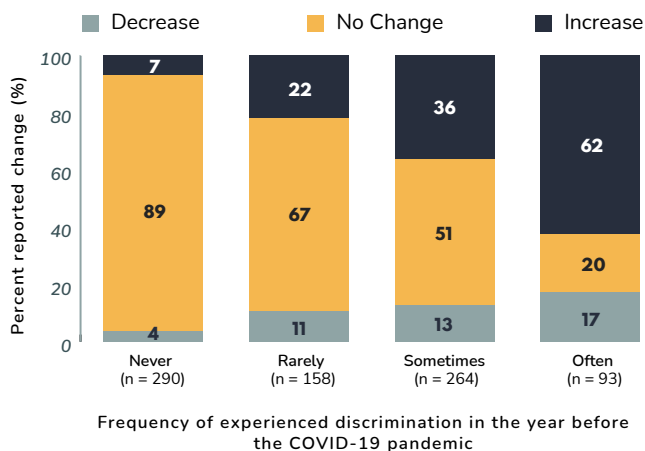
Changes in mental health since the start of the pandemic based on mental health of participants at the time of the survey



Discrimination

62% who often experienced discrimination when accessing healthcare services before the pandemic reported they experienced more during the pandemic

Changes in experienced discrimination when accessing healthcare services since the start of the pandemic based on discrimination experienced before the pandemic



Feelings of safety

17%

felt less safe in their home during the pandemic

Employment and financial security

36%

lost work hours or stopped working during the pandemic

Food security

53%

experienced food insecurity during the pandemic

For more information, look for the [Data Blog](#) and the full-length report titled: [National Report: Findings from the Survey on the Impact of COVID-19 on access to STBBI-related services including harm reduction services for African, Caribbean and Black people in Canada](#)

Acknowledgements

The success of this survey and the infographic was possible because of the Public Health Agency of Canada's collaboration and partnership with several community stakeholders including community researchers, organizations and members to ensure community engagement at every step of the survey including planning and implementation. Key stakeholders include the University of Ottawa and Women's Health in Women's Hands who assembled a National Expert Working Group (NEWG) to guide the implementation of the survey. The NEWG consisted of ACB researchers, service providers, and community members and leaders. Visit their [community report](#) and [data visualization dashboard](#). The authors gratefully acknowledge and thank all the members of the NEWG, Peer Research Assistants and the participants. The authors gratefully acknowledge the valuable input and contribution of the survey participants.