

February 4 to February 10, 2018 (Week 06)

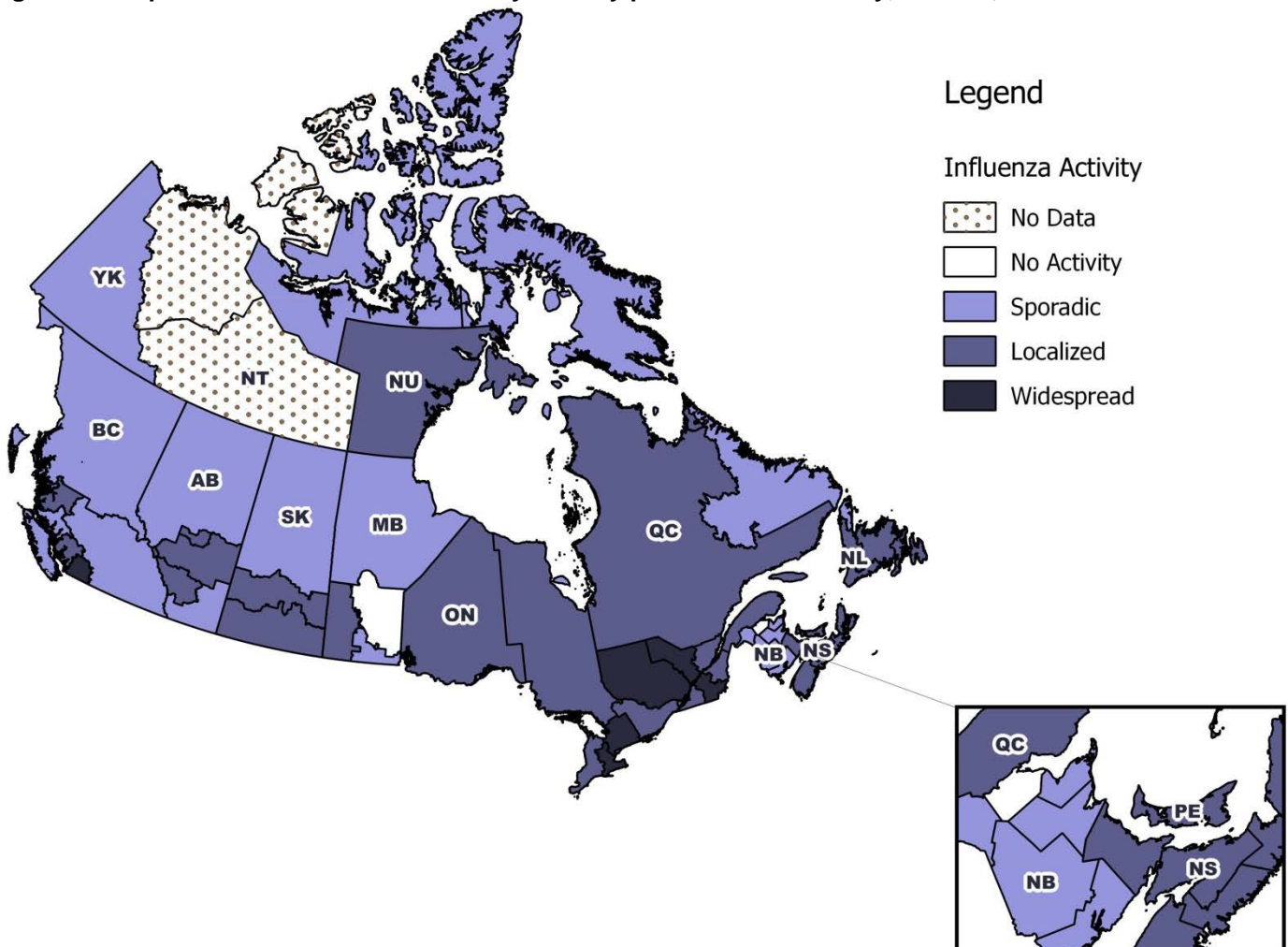
Overall Summary

- Overall, influenza activity in Canada remains at peak levels. Activity is starting to slow down in some parts of the country, but at the national level, several indicators of influenza circulation increased in week 06.
- In week 06, the number of laboratory detections of influenza A and B were similar. Detections of influenza A are within expected levels for this time of year, however, circulation of influenza B is greater than observed during the past seven seasons.
- To date this season, the majority of laboratory-confirmed cases, hospitalizations and deaths with influenza have been among adults 65 years of age and older.
- For more information on the flu, see our [Flu\(influenza\)](#) web page.

Influenza/Influenza-like Illness (ILI) Activity (geographic spread)

In week 06, a similar number of regions reported localized or widespread influenza activity compared to the previous week. Among the 51 regions reporting data for week 06, 6 regions (BC(1), ON(2), QC(3)) reported widespread activity, and 25 regions (BC(1), AB(3), SK(2), MB(1), ON(5), QC(3), NB(1), NS(4), NL(3), PE(1) and NU(1)) reported localized activity.

Figure 1 – Map of overall influenza/ILI activity level by province and territory, Canada, week 2018-06

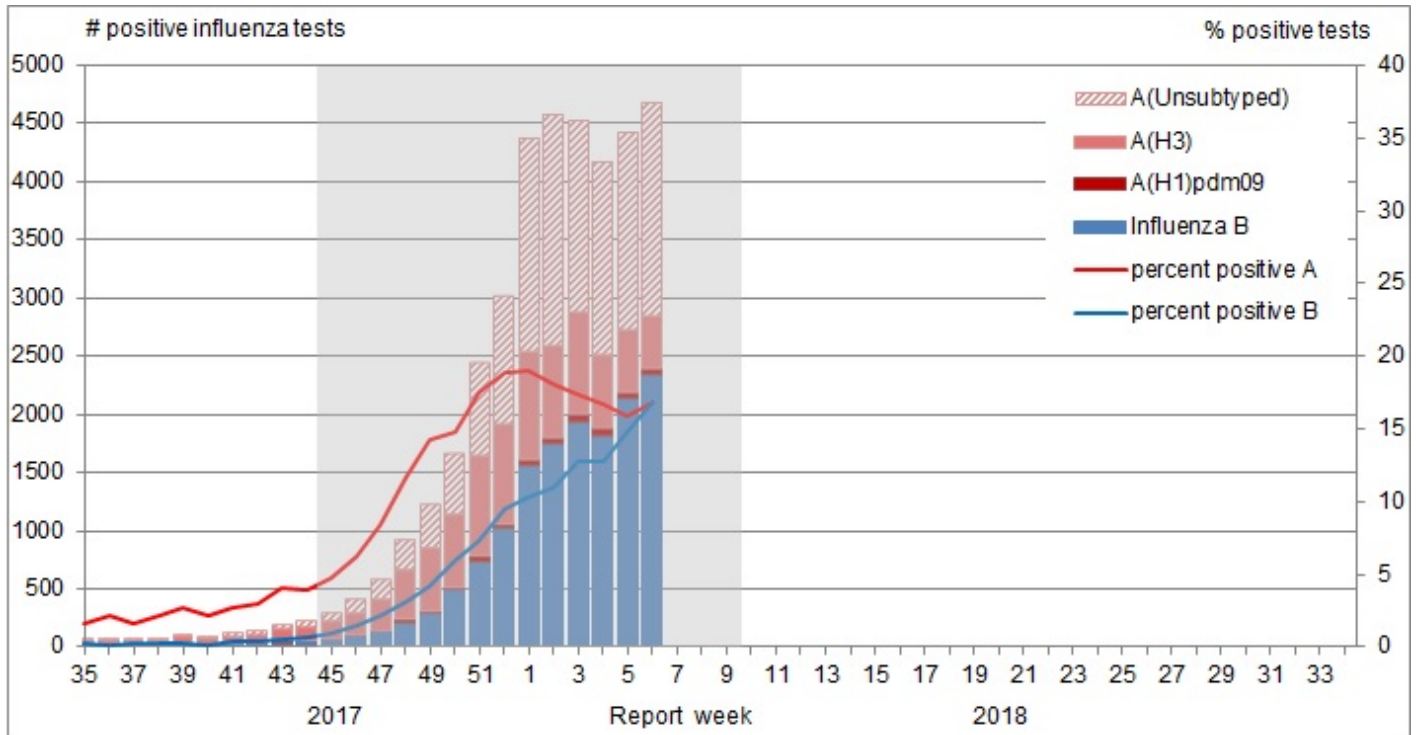


Laboratory-Confirmed Influenza Detections

In week 06, the overall percentage of tests positive for influenza increased from 31% to 34%. The percentage of tests positive for influenza A had been declining slowly since week 02, but increased in week 06 from 16% to 17%. The percentage of tests positive for influenza B continued to increase to 17% in week 06.

The percentage of influenza A detections for week 06 is within the expected range for this time of year. The percentage of tests positive for influenza B in week 06 continues to be well above expected levels for this time of year. For data on other respiratory virus detections, see the [Respiratory Virus Detections in Canada Report](#).

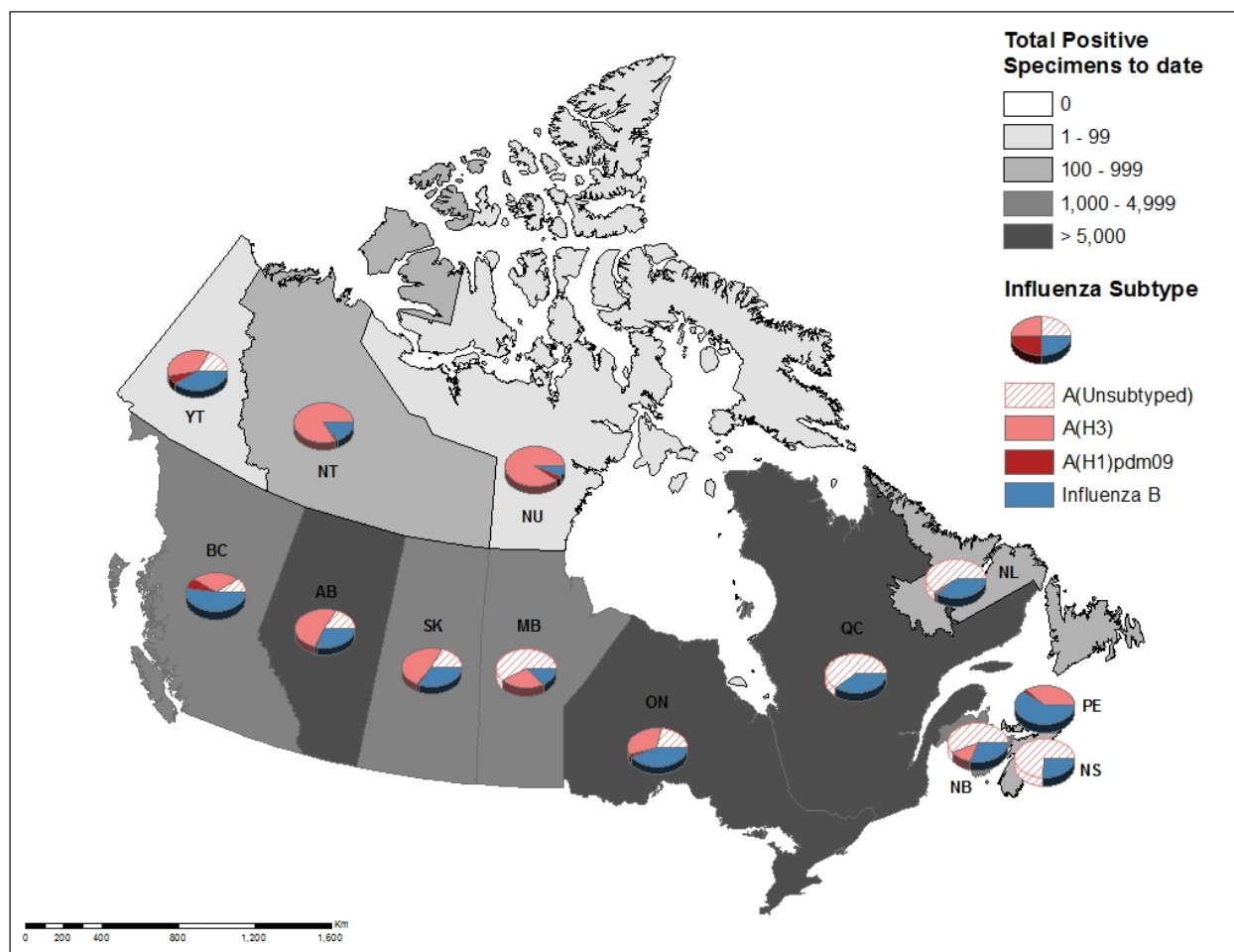
Figure 2 – Number of positive influenza tests and percentage of tests positive, by type, subtype and report week, Canada, weeks 2017-35 to 2018-06



The shaded area indicates weeks where the positivity rate was at least 5% and a minimum of 15 positive tests were observed, signalling the period of [seasonal influenza activity](#).

To date this season, 38,014 laboratory-confirmed influenza detections have been reported, of which 62% have been influenza A. Influenza A(H3N2) has been the most common subtype detected this season, representing 94% of subtyped influenza A detections. For more detailed weekly and cumulative influenza data, see the text descriptions for [Figures 2 and 3](#) or the [Respiratory Virus Detections in Canada Report](#).

Figure 3 – Cumulative numbers of positive influenza specimens by type/subtype and province/territory, Canada, weeks 2017-35 to 2018-06



To date this season, detailed information on age and type/subtype has been received for 33,159 laboratory-confirmed influenza cases (Table 1). Adults 65 years of age and older represent the largest proportion of cases overall (49%), and among cases of influenza A(H3N2) (54%) and influenza B (45%). Adults aged 20-64 represent 33% of cases overall and 31% of influenza A(H3N2) and 35% of influenza B cases. Although much smaller in numbers (466), the majority of influenza A(H1N1) cases are among adults less than 65 years of age, with adults aged 20-64 and children 0-19 years accounting for 54% and 33% of cases respectively.

Table 1 – Cumulative numbers of positive influenza specimens by type, subtype and age-group reported through case-based laboratory reporting, Canada, weeks 2017-35 to 2018-06

Age groups (years)	Cumulative (August 27, 2017 to February 10, 2018)						
	Influenza A				B	Influenza A and B	
	A Total	A(H1) pdm09	A(H3)	A (UnS) ¹	Total	#	%
0-4	2022	86	578	1358	815	2837	9%
5-19	1714	69	626	1019	1682	3396	10%
20-44	3238	134	1209	1895	1633	4871	15%
45-64	3412	117	1318	1977	2573	5985	18%
65+	10600	60	4332	6208	5470	16070	48%
Total	20986	466	8063	12457	12173	33159	100%

¹UnS: unsubtyped: The specimen was typed as influenza A, but no result for subtyping was available;

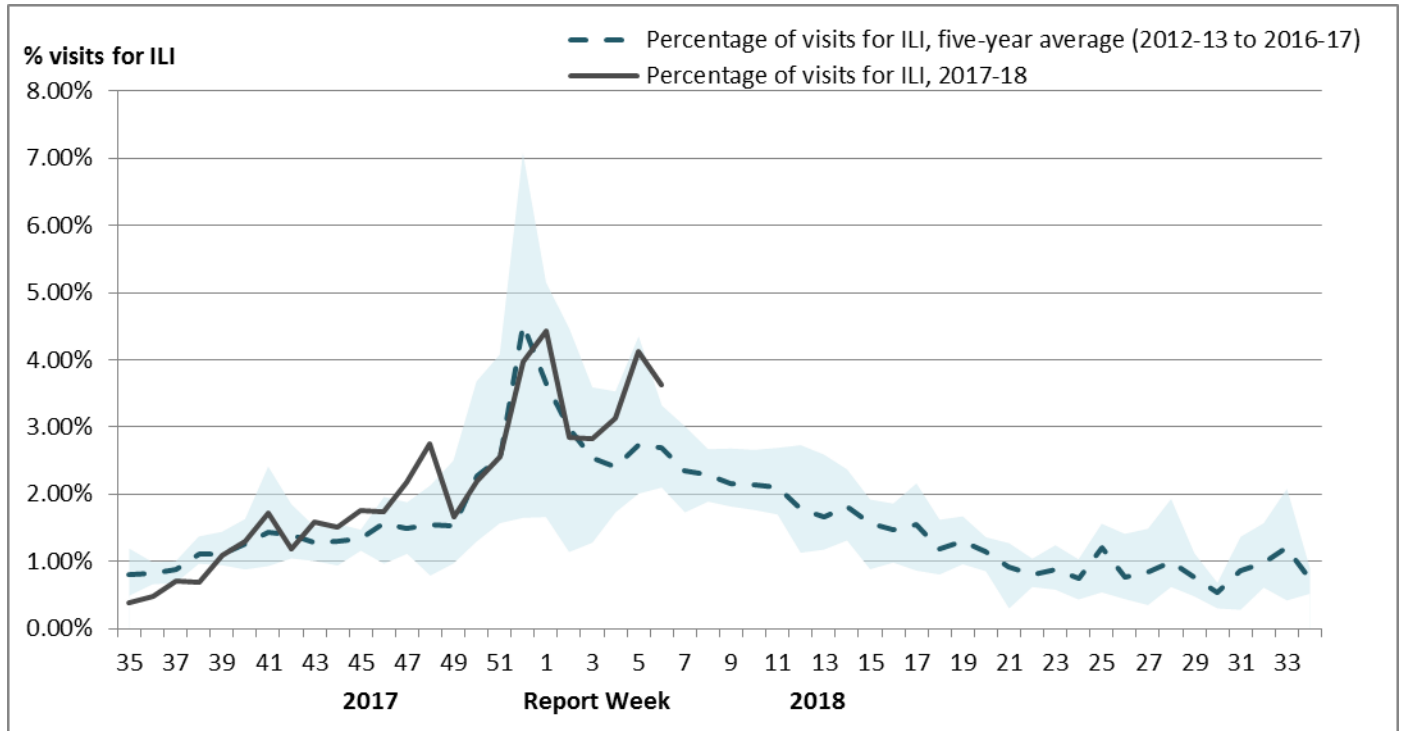
Syndromic / Influenza-like Illness Surveillance

Healthcare Practitioners Sentinel Syndromic Surveillance

In week 06, 3.6% of visits to healthcare professionals were due to influenza-like illness (ILI); a decrease compared to the previous week, and above the 5-year average.

Figure 4 – Percentage of visits for ILI reported by sentinels by report week, Canada, weeks 2017-35 to 2018-06

Number of Sentinels Reporting in Week 06: 165



The shaded area represents the maximum and minimum percentage of visits for ILI reported by week from seasons 2012-13 to 2016-17

Participatory Syndromic Surveillance

FluWatchers is a participatory ILI surveillance system that relies on weekly voluntary submissions of syndromic information from Canadians across Canada.

In week 06, 1,458 participants reported to FluWatchers, of which 4% reported symptoms of cough and fever, and 18% of these consulted a healthcare professional. Among participants who reported cough and fever, 69% reported days missed from work or school, resulting in a combined total of 157 missed days of work or school.

Table 2 – Summary of influenza-like illness symptoms reported by participating Canadians, Canada, week 2018-06

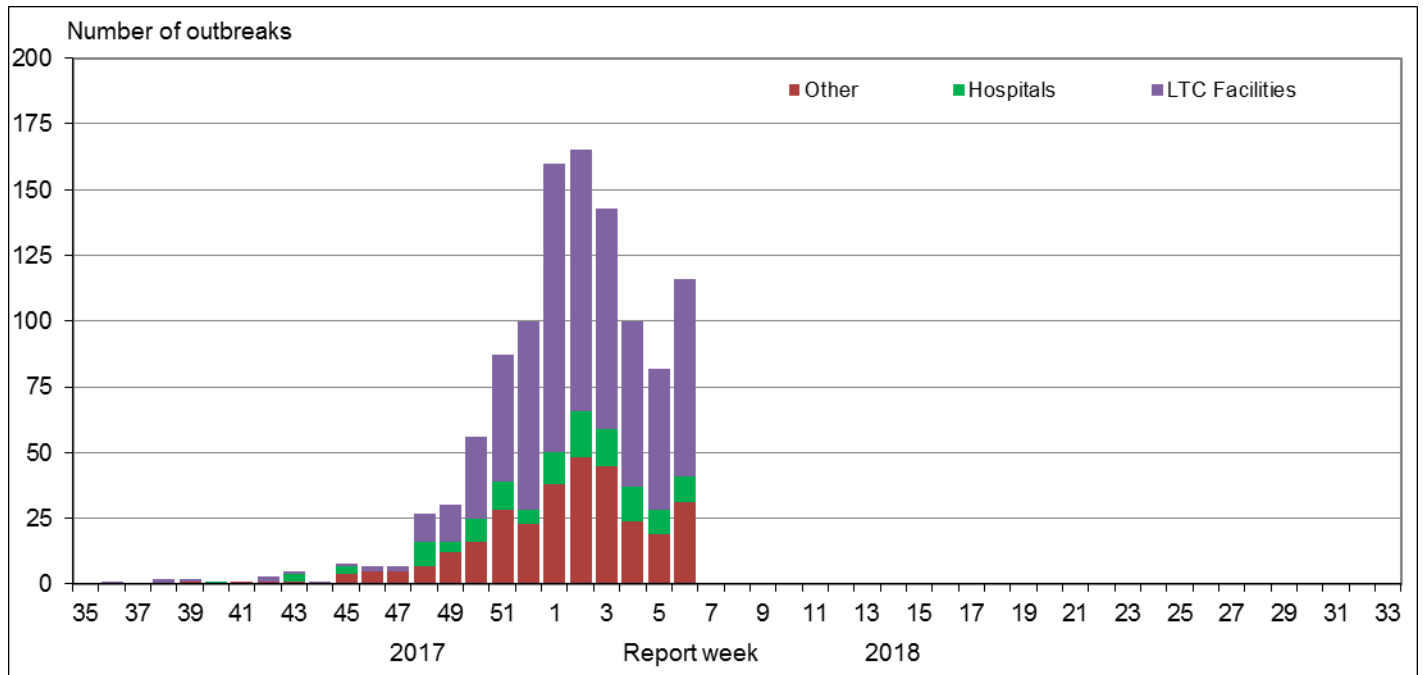
Number of Participants Reporting	Percentage participants reporting Cough and Fever	Percentage of participants with cough and fever who consulted a healthcare professional	Percentage of participants with cough and fever who reported missed days from work or school	Number of missed days from work or school
1458	4%	18%	69%	157

Influenza Outbreak Surveillance

In week 06, the number of reported laboratory-confirmed outbreaks of influenza increased compared to the previous week. In week 06, 122 new influenza outbreaks were reported: 75 in long-term care facilities, 10 in hospitals, and 31 in other settings. In addition, six ILI outbreaks were reported schools. Among the 106 outbreaks with influenza type/subtype reported, 54 (51%) were associated with influenza B, 45 (43%) were associated with influenza A and seven outbreaks were associated with a mix of influenza A and B (7%).

To date this season, 1,130 influenza/ILI outbreaks have been reported, of which 674 (60%) occurred in LTC facilities. Among the 982 outbreaks for which the influenza type/subtype was reported, 568 (58%) were associated with influenza A and 368 (38%) were associated with influenza B, and 46 (5%) were associated with a mix of A and B. Compared to recent influenza A(H3N2) seasons at week 06, the number of cumulative outbreaks reported this season has been greater than during the 2016-17 and 2012-13 seasons, and lower compared to the 2014-15 season.

Figure 5 – Number of new outbreaks of laboratory-confirmed influenza by report week, Canada, weeks 2017-35 to 2018-06

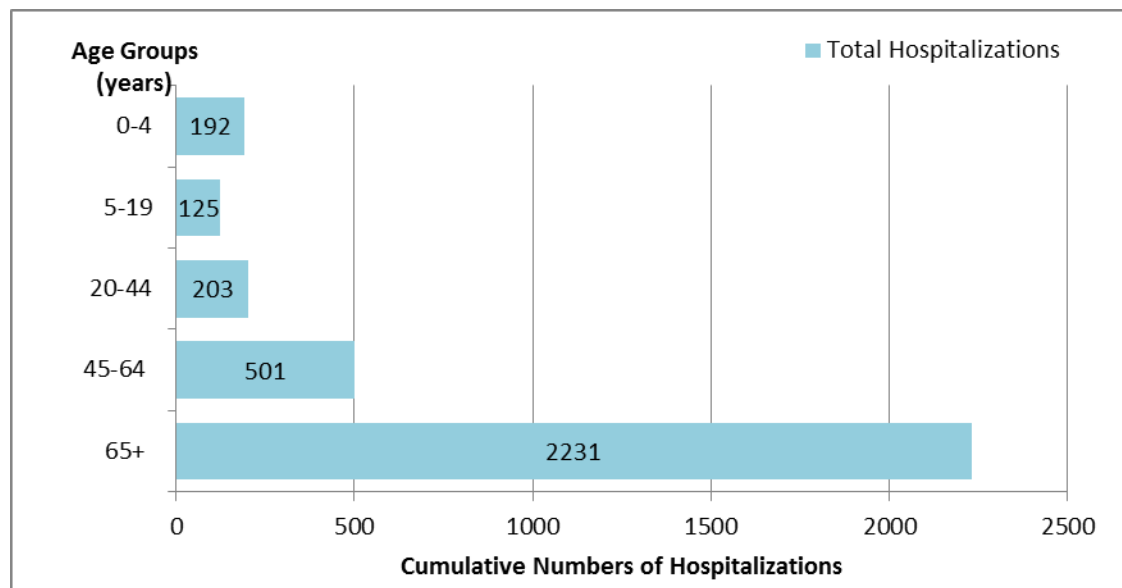


Severe Outcomes Influenza Surveillance

Provincial/Territorial Influenza Hospitalizations and Deaths

In week 06, 88 influenza-associated hospitalizations were reported by participating provinces and territories¹. To date this season, 3,252 influenza-associated hospitalizations have been reported, 78% of which were associated with influenza A, and 2,231 cases (69%) were in adults 65 years of age or older. To date, 292 ICU admissions and 142 deaths have been reported.

Figure 6 - Cumulative numbers of hospitalizations by age-group reported by participating provinces and territories¹, weeks 2017-35 to 2018-06



¹Influenza-associated hospitalizations are reported by NL, PE, NS, NB, MB, AB, YT and NT. Only hospitalizations that require intensive medical care are reported by SK.

Pediatric Influenza Hospitalizations and Deaths

In week 06, the number of laboratory-confirmed influenza-associated pediatric (≤ 16 years of age) hospitalizations reported by the Immunization Monitoring Program Active (IMPACT) network increased compared to the previous week. In week 06, 76 hospitalizations were reported of which influenza A and B made up almost equal proportion of cases. The number of weekly hospitalizations has been above the seven-season average since week 45.

To date this season, 594 pediatric hospitalizations have been reported by the IMPACT network, 378 (64%) of which were associated with influenza A. Children 0-23 months accounted for the largest proportion of influenza A hospitalizations (39%). Among the 216 hospitalizations due to influenza B, children 5-9 years accounted for the largest proportion of cases (31%).

Additionally, 97 ICU admissions and five deaths have been reported to date. Children aged 0-23 months accounted for 30% of ICU cases. Among the ICU cases with available information, 66% were due to influenza A and approximately 30% had no reported previous or concurrent medical conditions.

Figure 7 - Cumulative numbers of pediatric hospitalizations (≤ 16 years of age) with influenza by type and age-group reported by the IMPACT network, Canada, weeks 2017-35 to 2018-06

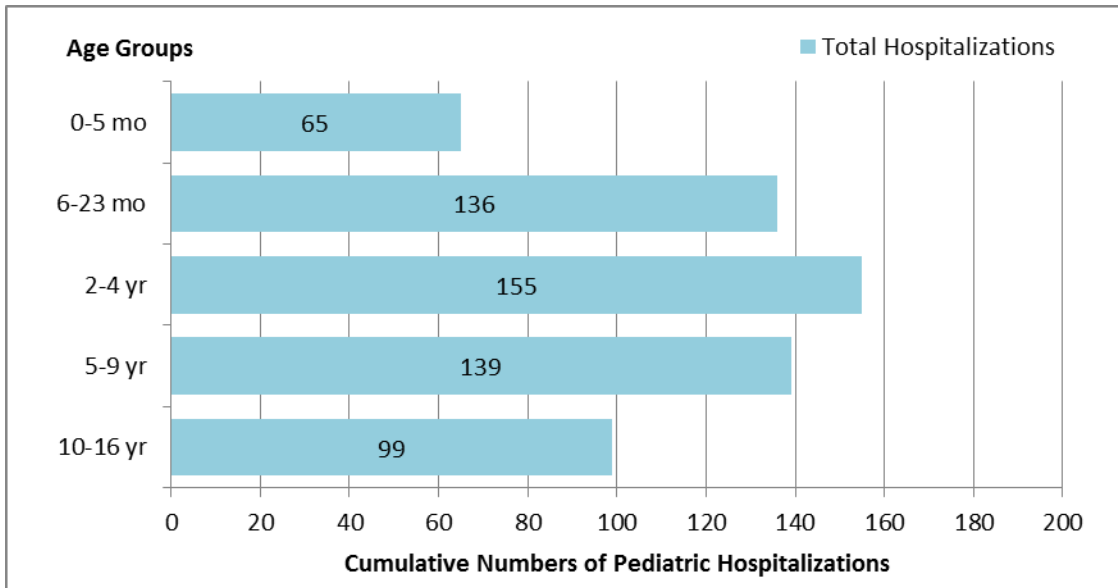
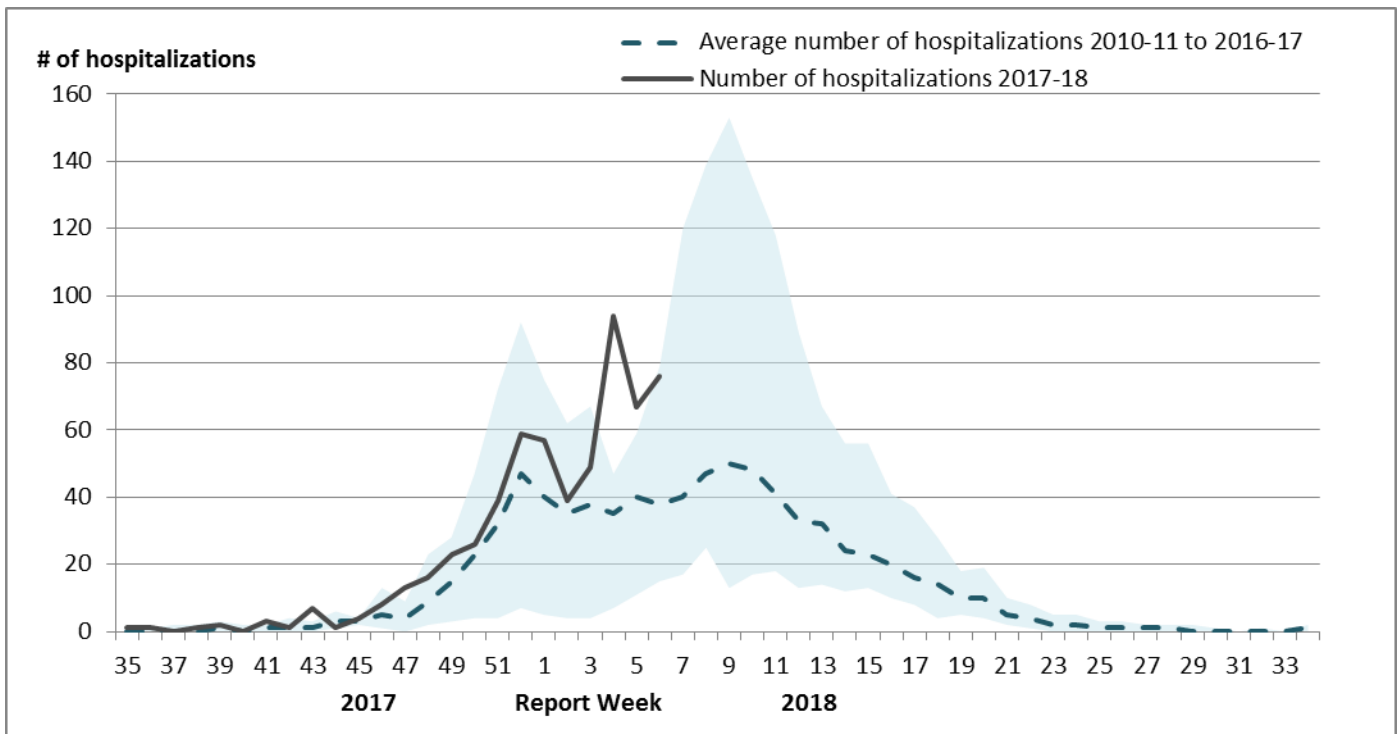


Figure 8 – Number of pediatric hospitalizations (≤ 16 years of age) with influenza reported by the IMPACT network, by week, Canada, weeks 2017-35 to 2018-06



The shaded area represents the maximum and minimum number of cases reported by week from seasons 2010-11 to 2016-17

Influenza Strain Characterizations

During the 2017-18 influenza season, the National Microbiology Laboratory (NML) has characterized 1,443 influenza viruses [810 A(H3N2), 72 A(H1N1)pdm09 and 561 B viruses] that were received from Canadian laboratories.

Antigenic Characterization

Among influenza viruses characterized by hemagglutination inhibition assay during the 2017-18 season, most viruses were antigenically similar to the cell-culture propagated reference strains recommended by WHO.

Table 3 – Influenza antigenic strain characterizations, Canada, weeks 2017-35 to 2018-06

Strain Characterization Results	Count	Description
Influenza A (H3N2)		
A/Hong Kong/4801/2014-like	148	Viruses antigenically similar to A/Hong Kong/4801/2014, the A(H3N2) component of the 2017-18 Northern Hemisphere's trivalent and quadrivalent vaccine.
Reduced titer to A/Hong Kong/4801/2014	15	These A(H3N2) viruses reacted poorly with antisera raised against cell-propagated A/Hong Kong/4801/2014, suggesting some antigenic differences.
Influenza A (H1N1)		
A/Michigan/45/2015-like	72	Viruses antigenically similar to A/Michigan/45/2015, the A(H1N1) component of the 2017-18 Northern Hemisphere's trivalent and quadrivalent influenza vaccine.
Influenza B		
B/Brisbane/60/2008-like (Victoria lineage)	6	Viruses antigenically similar to B/Brisbane/60/2008. B/Brisbane/60/2008 is the influenza B component of the 2017-18 Northern Hemisphere's trivalent and quadrivalent influenza vaccine.
Reduced titer to B/Brisbane/60/2008 (Victoria lineage)	18	These B/Victoria lineage viruses reacted poorly with antisera raised against cell-propagated B/Brisbane/60/2008, suggesting some antigenic differences.
B/Phuket/3073/2013-like (Yamagata lineage)	537	Viruses antigenically similar to B/Phuket/3073/2013, the additional influenza B component of the 2017-18 Northern Hemisphere quadrivalent influenza vaccine.

Genetic Characterization of A(H3N2) viruses

During the 2017-18 season, 647 A(H3N2) viruses did not grow to sufficient titers for antigenic characterization by HI assay. Therefore, genetic characterization was performed to determine to which genetic group they belong. Sequence analysis showed that 570 A(H3N2) viruses belonged to genetic group 3C.2a, 75 viruses belonged to subclade 3C.2a1 and two viruses belonged to the clade 3C.3a.

Additionally, of the 148 influenza A(H3N2) viruses that were characterized antigenically as similar to A/Hong Kong/4801/2014, 132 belonged to genetic group 3C.2a and 15 viruses belonged to subclade 3C.2a1. The 15 viruses that showed reduced titer to A/Hong Kong/4801/2014 belonged to genetic clade 3C.3a. Sequencing is pending for the remaining virus isolate.

A/Hong Kong/4801/2014-like virus belongs to genetic group 3C.2a and is the influenza A/H3N2 component of the 2017-18 Northern Hemisphere influenza vaccine.

Genetic Characterization of Influenza B viruses

Among the viruses characterized antigenically as having reduced titer to ferret antisera produced against cell-propagated B/Brisbane/60/2008, sequence analysis showed that all 18 viruses had a two amino acid deletion in the HA gene.

Antiviral Resistance

During the 2017-18 season, the National Microbiology Laboratory (NML) has tested 736 influenza viruses for resistance to oseltamivir and 732 viruses for resistance to zanamivir. All but one of the A(H1N1) viruses were sensitive to oseltamivir and all but one influenza B viruses were sensitive to zanamivir (Table 4).

Table 4 – Antiviral resistance by influenza virus type and subtype, Canada, weeks 2017-35 to 2018-06

Virus type and subtype	Oseltamivir		Zanamivir	
	# tested	# resistant (%)	# tested	# resistant (%)
A (H3N2)	390	0 (0%)	386	0 (0%)
A (H1N1)	60	1 (1.7%)	60	0 (0%)
B	286	0 (0%)	286	1 (0.3%)
TOTAL	736	1 (0.1%)	732	1 (0.1%)

Note: Since the 2009 pandemic, all circulating influenza A viruses have been resistant to amantadine, and it is therefore not currently recommended for use in the treatment of influenza. During the 2017-18 season, the subset of influenza A viruses that were tested for resistance to amantadine were resistant.

Provincial and International Influenza Reports

- Alberta – [Influenza Surveillance Report](#)
- British Columbia – [Influenza Surveillance](#)
- Manitoba - [Manitoba – Seasonal Influenza Reports](#)
- New Brunswick – [Influenza Surveillance Reports](#)
- Newfoundland and Labrador – [Surveillance and Disease Reports](#)
- Nova Scotia – [Respiratory Watch Report](#)
- Ontario – [Respiratory Pathogen Bulletin](#)
- Prince Edward Island – [Weekly Influenza Summary](#)
- Saskatchewan – [Influenza Reports](#)
- Québec – [Flash Grippe](#)
- Australia – [Influenza Surveillance Report](#)
- European Centre for Disease Prevention and Control – [Surveillance reports and disease data on seasonal influenza](#)
- New Zealand – [Influenza Weekly Update](#)
- Public Health England – [Weekly national flu reports](#)
- Pan-American Health Organization – [Influenza Situation Report](#)
- United States Centres for Disease Control and Prevention – [Weekly Influenza Surveillance Report](#)
- World Health Organization – [Influenza update](#)
- World Health Organization – [FluNet](#)

FluWatch Surveillance for the 2017-2018 Season – Notes and Definitions

The FluWatch report is compiled from a number of data sources. Surveillance information contained in this report is a reflection of the surveillance data available to FluWatch at the time of production. Delays in reporting of data may cause data to change retrospectively

Influenza/Influenza-like Illness (ILI) Activity

Influenza/ILI activity levels, as represented on the map, are assigned and reported by Provincial and Territorial Ministries of Health, based on laboratory confirmations, primary care consultations for ILI and reported outbreaks. ILI data may be reported through sentinel physicians, emergency room visits or health line telephone calls, and the determination of an increase is based on the assessment of the provincial/territorial epidemiologist. Maps from previous weeks, including any retrospective updates, are available in the mapping feature found in the [Weekly Influenza Reports](#).

Influenza/ILI Activity Level definitions

- 1 = No activity:** no laboratory-confirmed influenza detections in the reporting week, however, sporadically occurring ILI may be reported
- 2 = Sporadic:** sporadically occurring ILI and lab confirmed influenza detection(s) with **no outbreaks** detected within the influenza surveillance region†
- 3 = Localized:** (1) evidence of increased ILI*; (2) lab confirmed influenza detection(s); (3) **outbreaks** in schools, hospitals, residential institutions and/or other types of facilities occurring in **less than 50% of the influenza surveillance region**†
- 4 = Widespread:** (1) evidence of increased ILI*; (2) lab confirmed influenza detection(s); (3) **outbreaks** in schools, hospitals, residential institutions and/or other types of facilities occurring in **greater than or equal to 50% of the influenza surveillance region**†;

* More than just sporadic as determined by the provincial/territorial epidemiologist.

†Influenza surveillance regions within the province or territory as defined by the provincial/territorial epidemiologist

Laboratory-Confirmed Influenza Detections

Provincial, regional and some hospital laboratories report the weekly number of tests and detections of influenza and other respiratory viruses. Provincial public health laboratories submit demographic information for cases of influenza. This case-level data represents a subset of influenza detections reported through aggregate reporting. Specimens from NT, YT, and NU are sent to reference laboratories in the provinces for testing. Cumulative data includes updates to previous weeks. Discrepancies in values in Figures 2 and 3 may be attributable to differing data sources.

Syndromic/Influenza-like Illness Surveillance

FluWatch maintains a network of primary care practitioners who report the weekly proportion of ILI cases seen in their practice. Independent sentinel networks in BC, AB, and SK compile their data for reporting to FluWatch. Not all sentinel physicians report every week.

Definition of Influenza-like-illness (ILI): Acute onset of respiratory illness with fever and cough and with one or more of the following - sore throat, arthralgia, myalgia, or prostration which is likely due to influenza. In children under 5 years of age, gastrointestinal symptoms may also be present. In patients under 5 or 65 years and older, fever may not be prominent.

Influenza Outbreak Surveillance

Outbreaks of influenza or ILI are reported from all provinces and territories, according to the definitions below. However, reporting of outbreaks of influenza/ILI from different types of facilities differs between jurisdictions. All provinces and territories with the exception of NU report influenza outbreaks in long-term care facilities. All provinces and territories with the exception of NU and QC report outbreaks in hospitals.

Outbreak definitions:

Schools: Greater than 10% absenteeism (or absenteeism that is higher (e.g. >5-10%) than expected level as determined by school or public health authority) which is likely due to ILI.

Hospitals and residential institutions: two or more cases of ILI within a seven-day period, including at least one laboratory-confirmed case of influenza. Residential institutions include but are not limited to long-term care facilities (LTCF) and prisons.

Workplace: Greater than 10% absenteeism on any day which is most likely due to ILI.

Other settings: two or more cases of ILI within a seven-day period, including at least one laboratory-confirmed case of influenza; i.e. closed communities.

Serious Outcome Influenza Surveillance

Provincial/Territorial Influenza Hospitalizations and Deaths

Influenza-associated hospitalizations and deaths are reported by 8 Provincial and Territorial Ministries of Health (excluding BC, NU, ON and QC). The hospitalization or death does not have to be attributable to influenza, a positive laboratory test is sufficient for reporting. Only hospitalizations that require intensive medical care are reported by SK.

Due to changes in participating provinces and territories, comparisons to previous years should be done with caution.

Pediatric Influenza Hospitalizations and Deaths

The Immunization Monitoring Program Active (IMPACT) network reports the weekly number of hospitalizations with influenza among children admitted to one of the 12 participating paediatric hospitals in 8 provinces. These represent a subset of all influenza-associated pediatric hospitalizations in Canada.

Influenza Strain Characterizations and Antiviral Resistance

Provincial public health laboratories send a subset of influenza virus isolates to the National Microbiology Laboratory for strain characterization and antiviral resistance. These represent a subset of all influenza detections in Canada and the proportion of isolates of each type and subtype is not necessarily representative of circulating viruses.

Antigenic strain characterization data reflect the results of hemagglutination inhibition (HI) testing compared to the reference influenza strains recommended by [WHO](#). Genetic strain characterization data are based on analysis of the sequence of the viral hemagglutinin (HA) gene.

Antiviral resistance testing is conducted by phenotypic and genotypic methods on influenza virus isolates submitted to the National Microbiology Laboratory. All isolates are tested for oseltamivir and zanamivir and a subset are tested for resistance to amantadine.

Abbreviations: Newfoundland/Labrador (NL), Prince Edward Island (PE), New Brunswick (NB), Nova Scotia (NS), Quebec (QC), Ontario (ON), Manitoba (MB), Saskatchewan (SK), Alberta (AB), British Columbia (BC), Yukon (YT), Northwest Territories (NT), Nunavut (NU).

This [report](#) is available on the Government of Canada Influenza webpage.

Ce [rapport](#) est disponible dans les deux langues officielles.

We would like to thank all the Fluwatch surveillance partners who are participating in this year's influenza surveillance program.