

FLUWATCH

October 1 to October 14, 2023
(Weeks 40-41)



Weekly Highlights

At the national level, influenza activity is stable and at interseasonal levels. Sporadic influenza activity is being reported in many regions across Canada.

Virologic

- In week 41, the percentage of tests positive for influenza was 0.4% and a total of 97 laboratory detections (92 influenza A and 5 influenza B) were reported.

Syndromic

- The percentage of visits for influenza-like illness (ILI) was 1.7% in week 41. The percentage of visits for ILI is within levels typical of this time of year.
- The percentage of FluWatchers reporting fever and cough was 1.6% in week 41 and has decreased over the past two weeks.

Outbreaks

- From August 27, 2023 to October 14, 2023 (weeks 35 to 41), 9 laboratory-confirmed influenza outbreaks have been reported (no laboratory-confirmed influenza outbreaks were reported in week 41).

Severe Outcomes

- From August 27, 2023 to October 14, 2023 (weeks 35 to 41), 41 influenza-associated hospitalizations were reported by participating provinces and territories. Adults aged 65 years of age and older accounted for 56% of reported hospitalizations.

Other Notes

- The next scheduled FluWatch report will be published November 3, 2023 (weeks 42 to 43).
- Weekly reporting of laboratory detections of influenza, SARS-CoV-2, and other seasonal respiratory viruses will continue via our [Respiratory Virus Detections Surveillance System](#).
- Weekly reporting of SARS-CoV-2 specific trends can be found on the [COVID-19 epidemiology update](#) page.

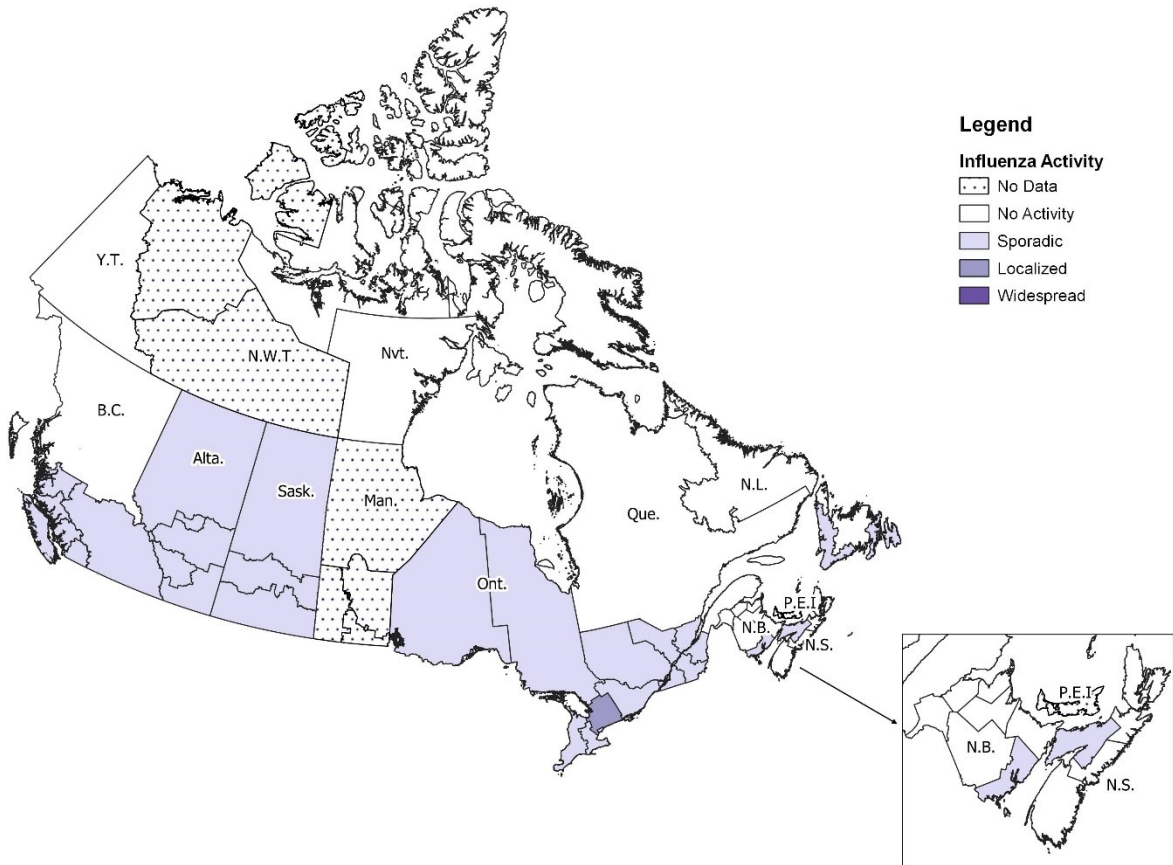


Influenza/Influenza-like Illness Activity – Geographic Spread

In week 41, 28 regions across Canada reported either sporadic or localized influenza activity (Figure 1). The number of regions reporting influenza activity and the intensity of reported activity remains stable. A total of 17 regions in Canada reported no activity this week.

Figure 1 – Map of influenza/ILI activity by province and territory, Canada, week 2023-41

Number of Regions Reporting in Week 41: 45 out of 53



Laboratory-Confirmed Influenza Detections

The weekly percentage of tests positive for influenza (0.4% in week 41) remains stable and is at interseasonal levels.

The following results were reported from sentinel laboratories across Canada in week 41 (Figures 2 and 3):

- A total of 97 laboratory detections (92 influenza A and 5 influenza B) were reported.
- Among subtyped influenza A detections (33), 79% (26) were influenza A(H1N1).
- Among detections for which age information was reported (71), 28 (39%) of detections were in individuals over the age of 65 years.

To date this season (August 27, 2023 to October 14, 2023):

- 768 influenza detections were reported, of which 92% (705) were influenza A and among subtyped influenza A detections (476), influenza A(H1N1) accounted for 79% of detections.
- 541 laboratory-confirmed influenza detections with age information were reported, of which 228 (42%) were in individuals aged 65+ years old (Figure 4).

For more detailed weekly and cumulative influenza data, see the text descriptions for [Figures 2 and 3](#) or the [Respiratory Virus Detections in Canada Report](#).

Figure 2 – Number of positive influenza tests and percentage of tests positive, by type, subtype and report week, Canada, week 2023-35 to 2023-41

Number of Laboratories Reporting in Week 41: 34 out of 35

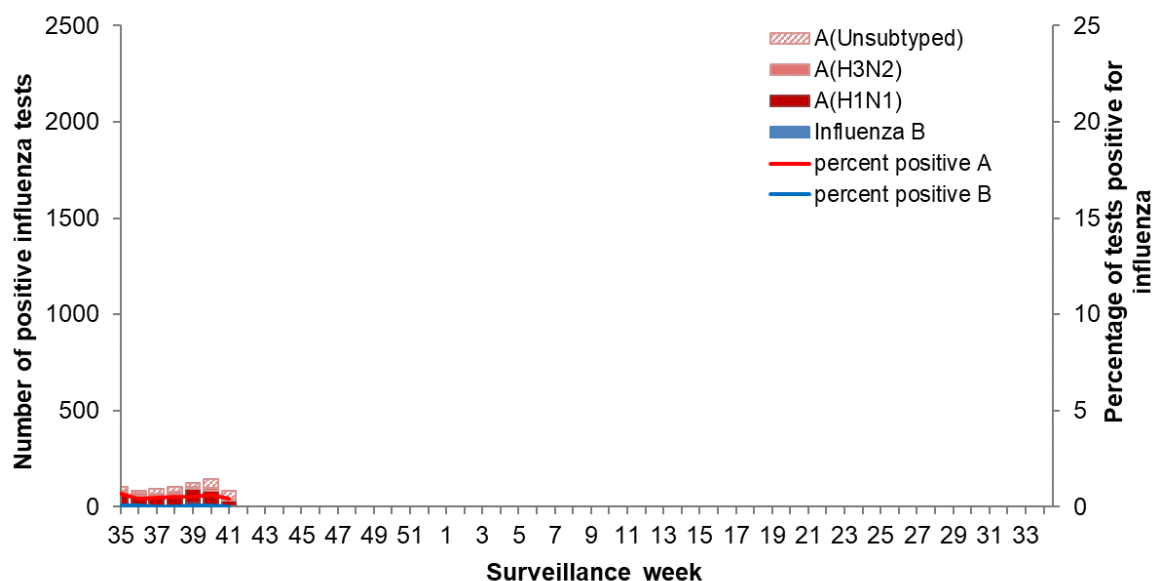
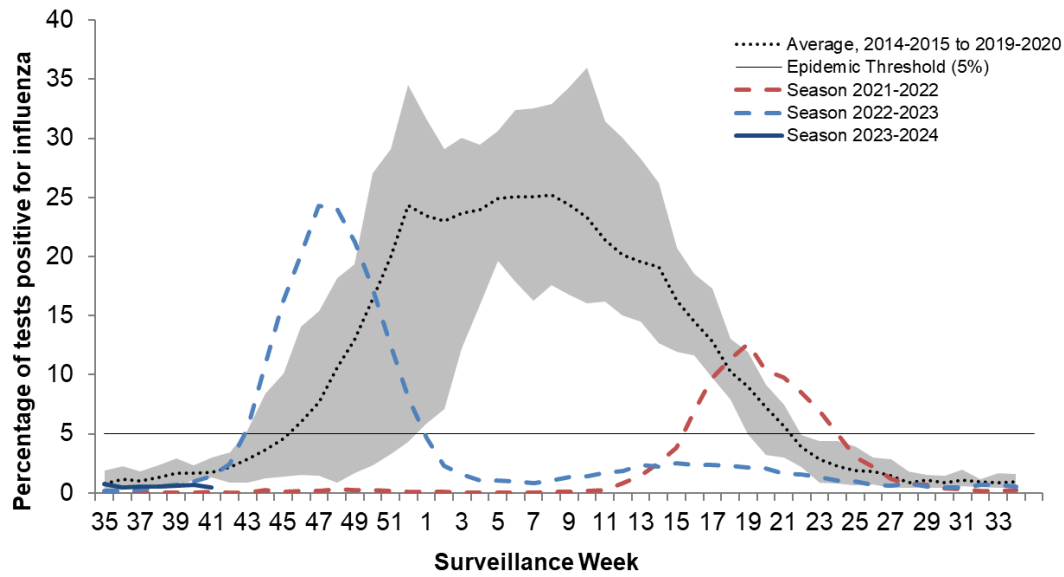


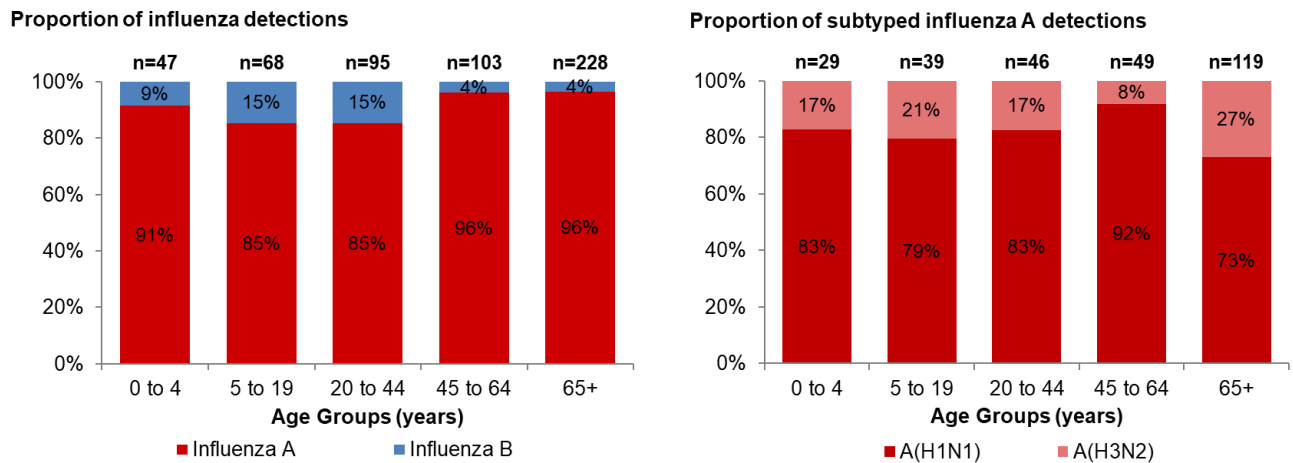
Figure 3 –Percentage of tests positive in Canada compared to previous seasons, week 2023-35 to 2023-41



The shaded area represents the maximum and minimum number of influenza tests or percentage of tests positive reported by week from seasons 2014-2015 to 2019-2020. Data from week 11 of the 2019-2020 season onwards are excluded from the historical comparison due to the COVID-19 pandemic.

The epidemic threshold is 5% tests positive for influenza. When it is exceeded, and a minimum of 15 weekly influenza detections are reported, a seasonal influenza epidemic is declared.

Figure 4 – Proportion of positive influenza specimens by type or subtype and age-group reported through case-based laboratory reporting, Canada, week 2023-35 to 2023-41



Laboratory data notes:

Testing for influenza and other respiratory viruses has been influenced by the COVID-19 pandemic. Changes in laboratory testing practices may affect the comparability of data to previous seasons.

Due to different testing protocols of laboratories across Canada, some influenza A subtype detection counts may not be included in total influenza A detection counts and percent positivity calculations.

Syndromic / Influenza-like Illness Surveillance

Healthcare Practitioners Sentinel Surveillance

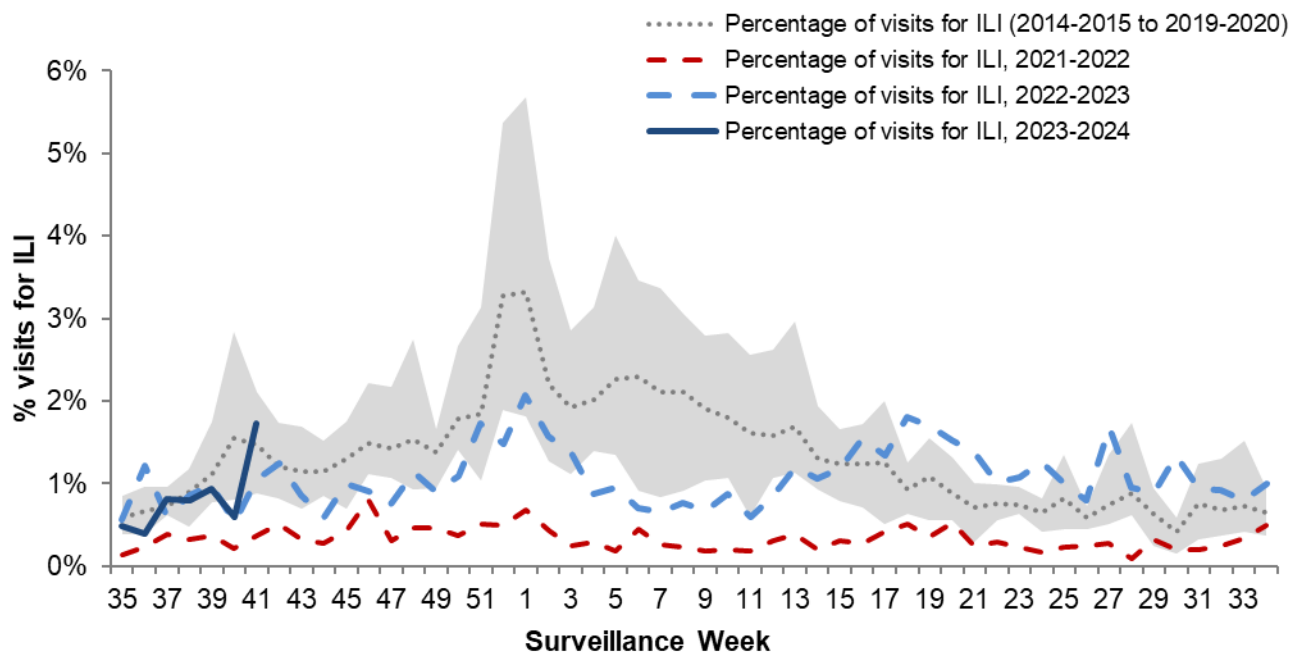
In week 41, 1.7% of visits to healthcare professionals were due to influenza-like illness (ILI) (Figure 5). The percentage of visits for ILI is within expected levels for this time of year.

ILI symptoms are not specific to any one respiratory pathogen and can be due to influenza, or other respiratory viruses, including respiratory syncytial virus and SARS-CoV-2, the virus that causes COVID-19. This makes the percentage of visits for ILI an important indicator of overall respiratory illness morbidity in the community in the presence of co-circulating viruses.

This indicator should be interpreted with caution as there have been a smaller number of sentinels reporting compared to previous seasons.

Figure 5 – Percentage of visits for ILI reported by sentinels by report week, Canada, weeks 2023-35 to 2023-41

Number of Sentinels Reporting in Week 41: 36



The shaded area represents the maximum and minimum percentage of visits for ILI reported by week from seasons 2014-2015 to 2019-2020. Data from week 11 of the 2019-2020 season onwards are excluded from the historical comparison due to the COVID-19 pandemic.

FluWatchers

In week 41, 9,083 participants reported to FluWatchers, of which 1.6% reported symptoms of cough and fever (Figure 6). The percentage of FluWatchers who have reported cough and fever has decreased over the past two weeks and is likely capturing the community activity of non-influenza viruses such as SARS-CoV-2.

The reports of cough and fever are not specific to any one respiratory pathogen and can be due to influenza, or other respiratory viruses, including respiratory syncytial virus, rhinovirus, and SARS-CoV-2, the virus that causes COVID-19. This makes the proportion of individuals reporting cough and fever an important indicator of overall respiratory illness activity in the community in the presence of co-circulating viruses.

FluWatchers reporting is not impacted by changes in health services or health seeking behaviours.

Among the 147 participants who reported cough and fever:

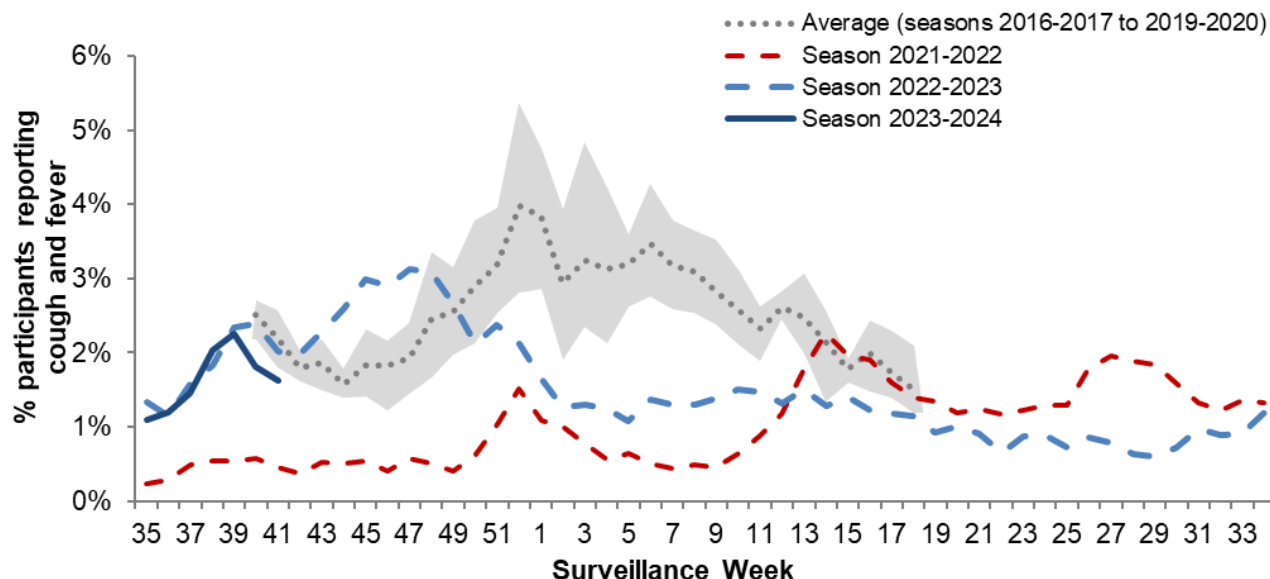
- 18% consulted a healthcare professional.
- 75% reported days missed from work or school, resulting in an average of 2.8 missed days from work or school among those 110 participants.

The Northwest Territories had the highest participation rate this week (51 participants per 100,000 population) and the neighbourhood with postal code, KOA had the highest number of participants (123). See what is happening in your [neighbourhood!](#) Downloadable datasets are also available on [Open Maps](#).

If you are interested in becoming a [FluWatcher](#), [sign up today](#).

Figure 6 – Percentage of FluWatchers reporting cough and fever, Canada, week 2023-35 to 2023-41

Number of Participants Reporting in Week 41: 9,083



The shaded area represents the maximum and minimum percentage of percentage of participants reporting cough and fever by week, from seasons 2014-2015 to 2019-2020. Data from week 11 of the 2019-2020 season onwards are excluded from the historical comparison due to the COVID-19 pandemic

Influenza Outbreak Surveillance

In week 41, no laboratory-confirmed influenza outbreaks were reported.

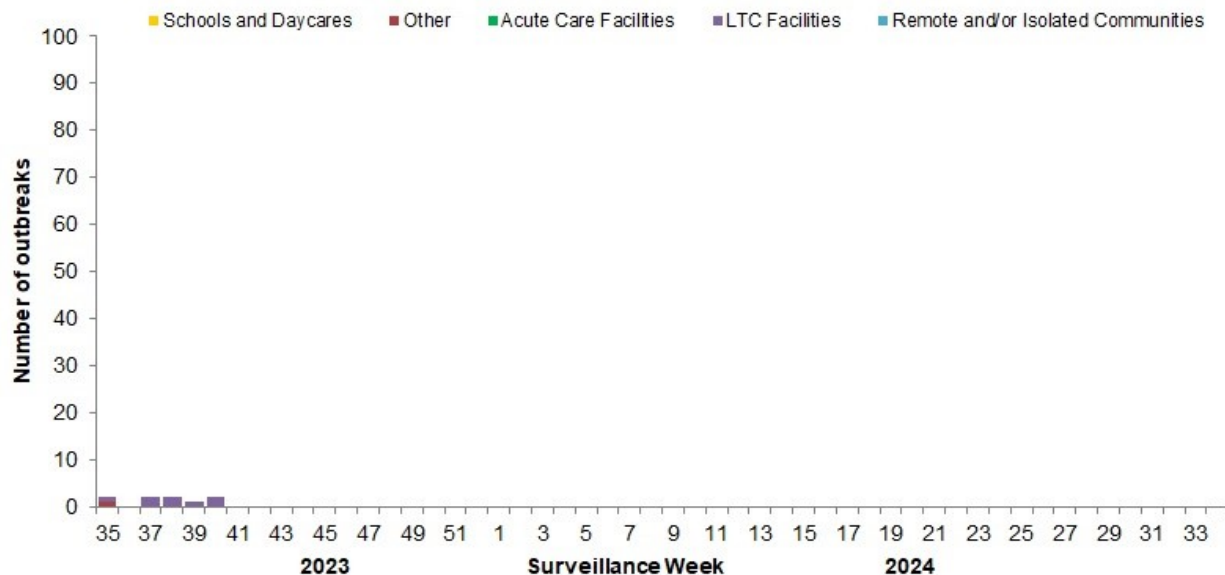
To date this season (August 27, 2023 to October 14, 2023):

- 9 laboratory-confirmed influenza outbreaks have been reported
 - 8 were in LTC facilities (89%)
 - 1 was in a facility categorized as ‘other’ (11%)
 - All outbreaks were due to influenza A and among those with subtyping information (8), 75% were due to influenza A(H1N1)
- 6 ILI outbreaks have been reported
 - All ILI outbreaks have been reported in schools and/or daycares.

Outbreaks of ILI are not specific to any one respiratory pathogen and can be due influenza, or other respiratory viruses, including respiratory syncytial virus, rhinovirus, COVID-19, or a mixture of viruses.

Number of provinces and territories¹ reporting in week 41: 10 out of 13

Figure 7: Number of new outbreaks of laboratory-confirmed influenza by report week, Canada, weeks 2023-35 to 2023-41



¹All Provinces and Territories (PTs) participate in the FluWatch outbreak surveillance system. This outbreak system monitors influenza and ILI outbreaks in long-term care facilities (LTCF), acute care facilities, schools and daycares, remote and/or isolated communities, and facilities categorized as ‘other’. Not all reporting PTs report outbreaks in all these settings. All PTs report laboratory confirmed outbreaks in LTCF. Four PTs (NB, NL, NS and YK) report ILI outbreaks in schools and/or daycares and other facilities.

Influenza Severe Outcomes Surveillance

Provincial/Territorial Influenza Hospitalizations and Deaths

In week 39, less than five influenza-associated hospitalizations and no ICU admissions were reported by participating provinces and territories².

To date this season (August 27, 2023 to October 14, 2023), 41 influenza-associated hospitalizations were reported by participating provinces and territories:

- 95% of the hospitalizations were associated with influenza A.
- Of the cases with subtype information (31), 87% were associated with influenza A(H1N1)
- Adults aged 65 years of age and older accounted for 56% of reported hospitalizations.

To date this season (August 27, 2023 to October 14, 2023), less than five ICU admissions and less than five influenza-associated deaths were reported.

Number of provinces and territories reporting in week 41: 6 out of 9

²Influenza-associated hospitalizations are reported by Alberta, Manitoba, New Brunswick, Newfoundland and Labrador, Northwest Territories, Nova Scotia, Prince Edward Island and Yukon. Only hospitalizations that require intensive medical care are reported by Saskatchewan.

Influenza Strain Characterization

The National Microbiology Laboratory has not yet reported influenza strain characterization results for influenza viruses collected during the 2023-2024 season.

Antiviral Resistance

The National Microbiology Laboratory has not yet reported antiviral resistance results for influenza viruses collected during the 2023-2024 season.

Influenza Vaccine Monitoring

Vaccine monitoring refers to activities related to the monitoring of influenza vaccination coverage and vaccine effectiveness.

Vaccination Coverage

Influenza vaccine coverage estimates for the 2023-2024 season are anticipated to be available in February or March 2024.

Vaccine Effectiveness

Influenza vaccine effectiveness estimates for the 2023-2024 season are anticipated to be available in February or March 2024.

Provincial and International Surveillance Links

- British Columbia – [Influenza Surveillance; Vaccine Effectiveness Monitoring](#)
- Alberta – [Respiratory Virus Surveillance](#)
- Saskatchewan – [Influenza Reports](#)
- Manitoba – [Seasonal Influenza Reports](#)
- Ontario – [Ontario Respiratory Pathogen Bulletin](#)
- Québec – [Système de surveillance de la grippe \(available in French only\)](#)
- New Brunswick – [Influenza Surveillance Reports](#)
- Prince Edward Island – [Influenza Summary](#)
- Nova Scotia – [Respiratory Watch Report](#)
- Newfoundland and Labrador – [Surveillance and Disease Reports](#)
- Yukon – [Influenza \(the Flu\)](#)
- Northwest Territories – [Influenza/ Flu Information](#)
- Nunavut – [Influenza Information](#)
- World Health Organization – [Global Influenza Programme](#)
- Pan American Health Organization – [Influenza situation report](#)
- U.S. Centers for Disease Prevention & Control (CDC) - [Weekly Influenza Summary Update](#)
- European Centre for Disease Prevention and Control – [Surveillance reports and disease data on seasonal influenza](#)
- United Kingdom – [National influenza surveillance reports](#)
- Hong Kong Centre for Health Protection - [Flu Express](#)
- Australia – [Influenza Surveillance Report and Activity Updates](#)
- New Zealand – [Influenza Dashboard](#)

Notes

The data in the FluWatch report represent surveillance data available at the time of writing. All data are preliminary and may change as updates are received.

To learn more about the FluWatch program, see the [Overview of influenza monitoring in Canada](#) page.

For more information on the flu, see our [Flu \(influenza\)](#) web page.

We would like to thank all the FluWatch surveillance partners participating in this year's influenza surveillance program.

This [report](#) is available on the Government of Canada Influenza webpage.

Ce [rapport](#) est disponible dans les deux langues officielles.