

# LYME DISEASE SURVEILLANCE IN CANADA

Annual Edition 2019

## WHAT IS LYME DISEASE?

- ▶ **Lyme disease** is a bacterial infection transmitted to humans through the bite of an infected tick
- ▶ Early **clinical manifestations** can present as flu-like symptoms including joint pain and/or bull's eye rash. If untreated, individuals may experience cardiac and neurologic manifestations and arthritis


## WHAT IS THE RISK?

- ▶ **Lyme disease** is the most frequently reported **vector-borne disease** in Canada
- ▶ The **greatest risk** of acquiring Lyme disease occurs in regions where populations of ticks carrying the bacteria, *Borrelia burgdorferi*, have become established

## WHO'S AT GREATER RISK?



Children aged 5-14 years

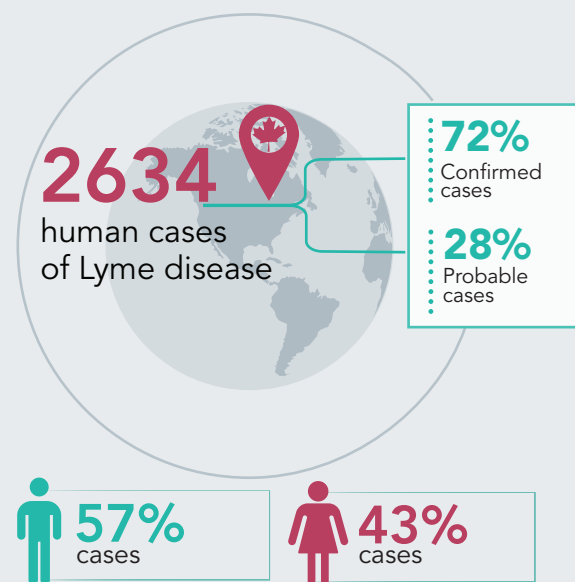


Adults aged 55-79 years

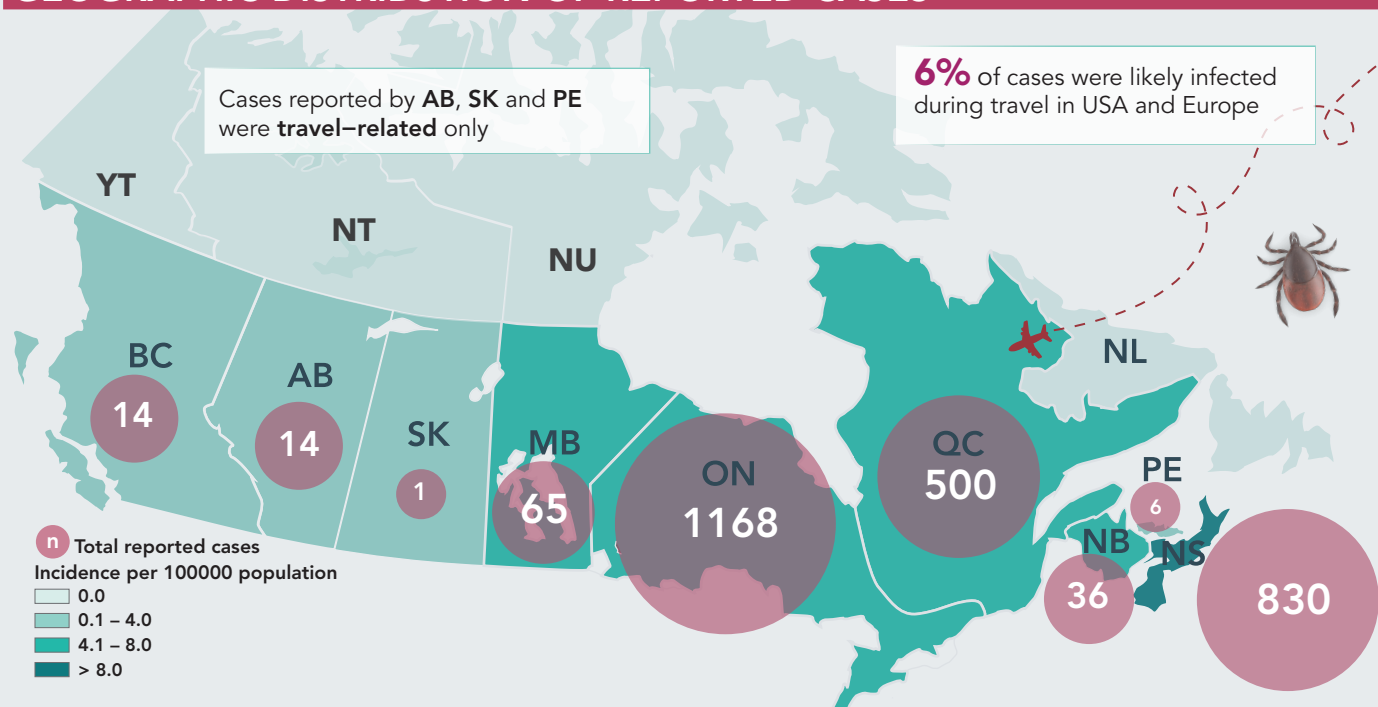


## FACTS

### REPORTED IN 2019



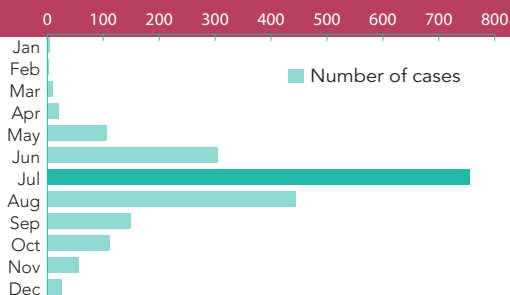
## GEOGRAPHIC DISTRIBUTION OF REPORTED CASES



## SEASONALITY

**38%** OF CASES REPORTED AN ILLNESS ONSET IN JULY

**97%** OF THE CASES OCCURRED FROM MAY THROUGH NOVEMBER



## PUBLIC HEALTH RECOMMENDATIONS

### TIPS TO AVOID TICK BITES:

#### PROTECTING YOURSELF WHEN DOING OUTDOOR ACTIVITIES



#### REDUCING RISK



Public Health Agency of Canada

Agence de la santé publique du Canada

Canada