

# LYME DISEASE SURVEILLANCE IN CANADA | ANNUAL EDITION 2021

## WHAT IS LYME DISEASE?

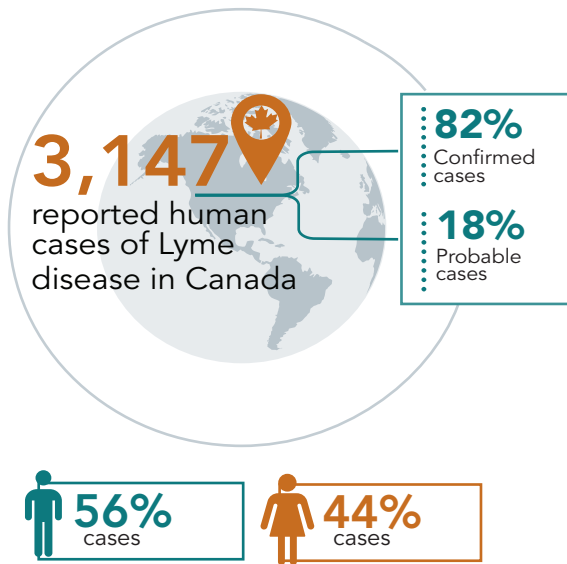
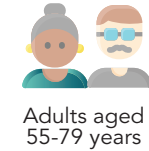
- ▶ **Lyme disease** is a bacterial infection transmitted to humans through the bite of an infected tick.
- ▶ Early **clinical manifestations** can present as flu-like symptoms including joint pain and/or bull's eye rash. If untreated, individuals may experience cardiac and neurologic manifestations and arthritis.

## WHAT IS THE RISK?

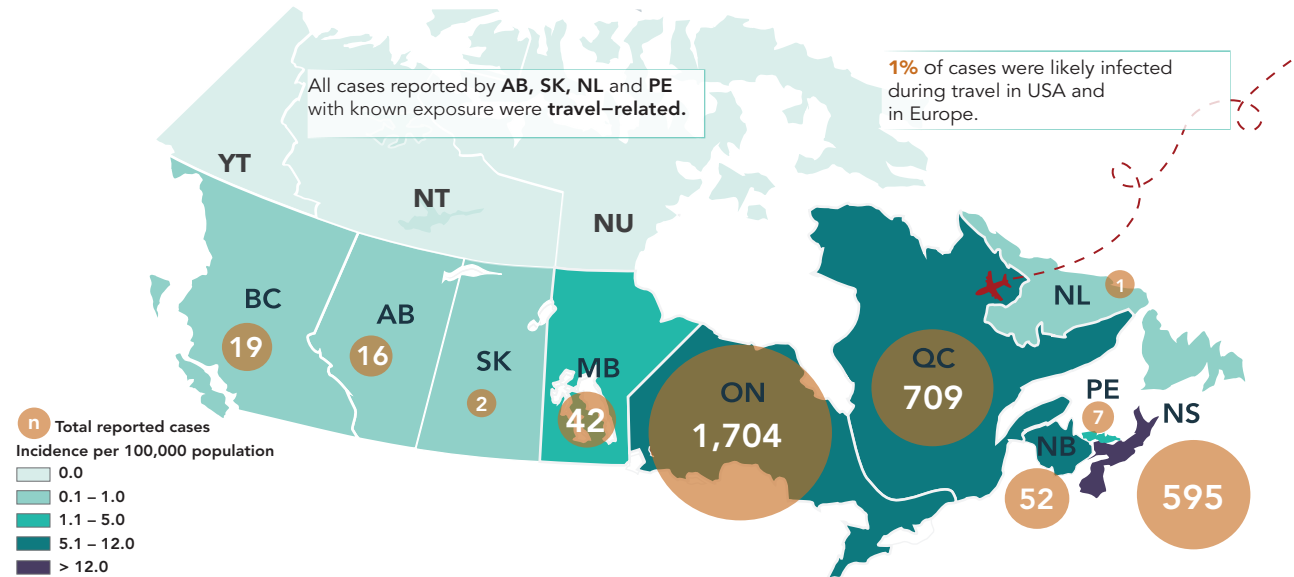
- ▶ **Lyme disease** is the most frequently reported **vector-borne disease** in Canada. Vector-borne diseases are infectious diseases transmitted to humans from insects or animals.
- ▶ The **greatest risk** of acquiring Lyme disease occurs in regions where populations of ticks carrying the bacteria, *Borrelia burgdorferi*, have become established.

## WHO'S AT GREATER RISK?

- ▶ Cases occurred in all age groups. Those at greatest risk were:

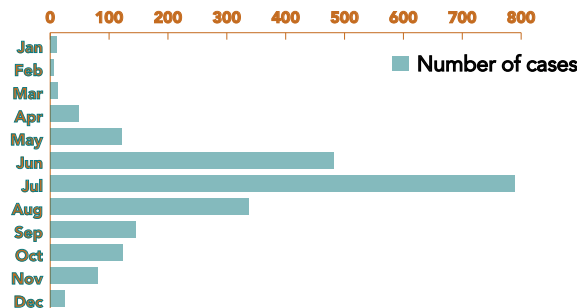


## GEOGRAPHIC DISTRIBUTION OF REPORTED CASES



## SEASONALITY

- 36% OF CASES REPORTED AN ILLNESS ONSET IN JULY
- 95% OF CASES REPORTED AN ILLNESS ONSET BETWEEN MAY AND NOVEMBER



## TIPS TO AVOID TICK BITES

### PROTECTING YOURSELF WHEN DOING OUTDOOR ACTIVITIES



### REDUCING RISK

