

# LYME DISEASE SURVEILLANCE IN CANADA

Annual Edition 2020

## WHAT IS LYME DISEASE?

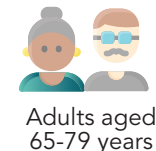
- ▶ **Lyme disease** is a bacterial infection transmitted to humans through the bite of an infected tick
- ▶ Early **clinical manifestations** can present as flu-like symptoms including joint pain and/or bull's eye rash. If untreated, individuals may experience cardiac and neurologic manifestations and arthritis

## WHAT IS THE RISK?

- ▶ **Lyme disease** is the most frequently reported **vector-borne disease** in Canada
- ▶ The **greatest risk** of acquiring Lyme disease occurs in regions where populations of ticks carrying the bacteria, *Borrelia burgdorferi*, have become established.

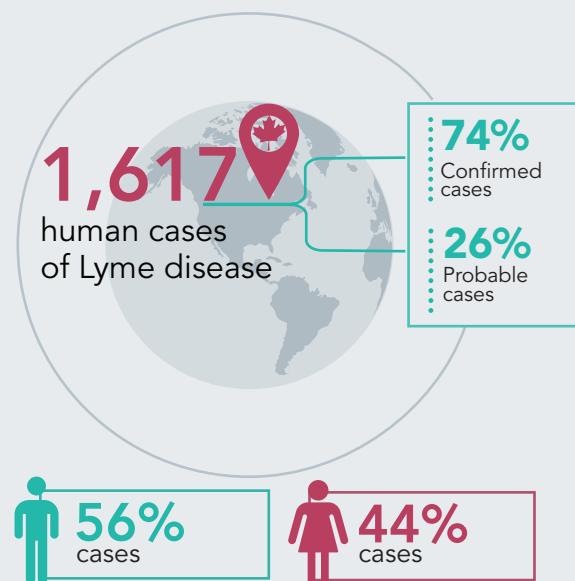
## WHO'S AT GREATER RISK?

▶ Cases occurred in all age groups. Those at greatest risk were:

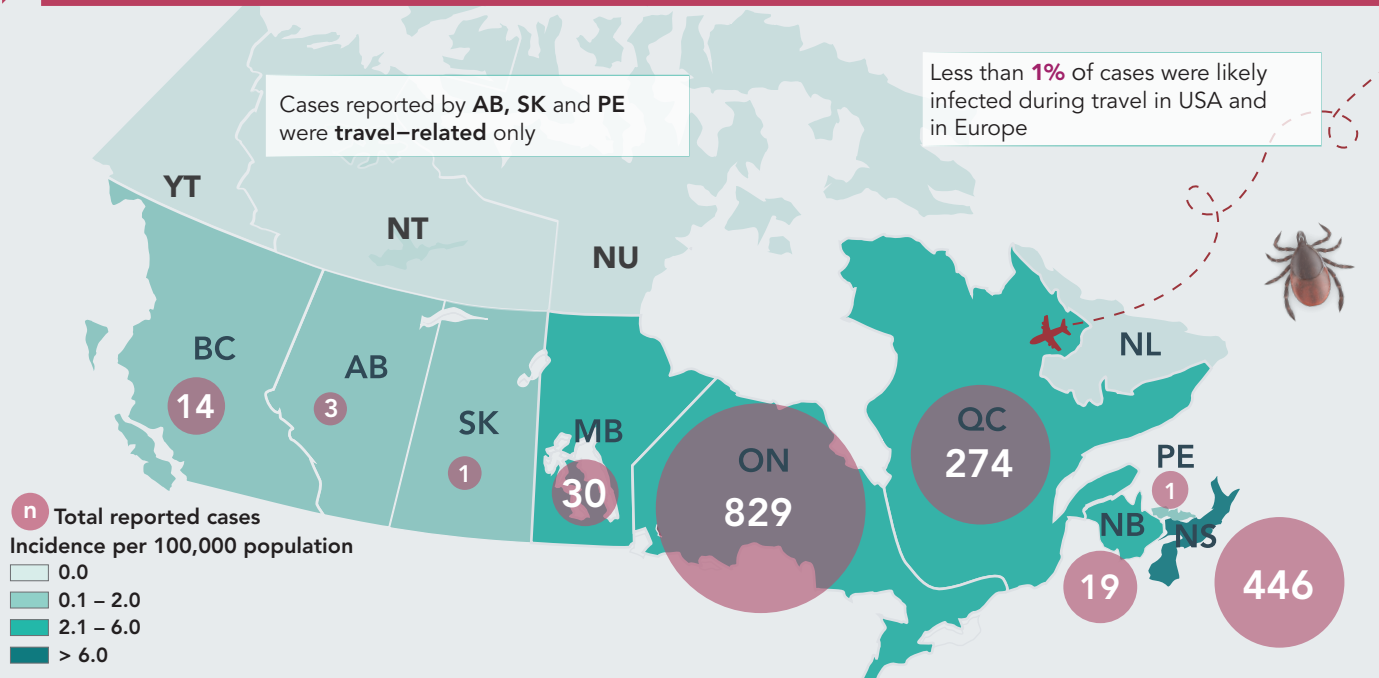


## FACTS

### REPORTED IN 2020



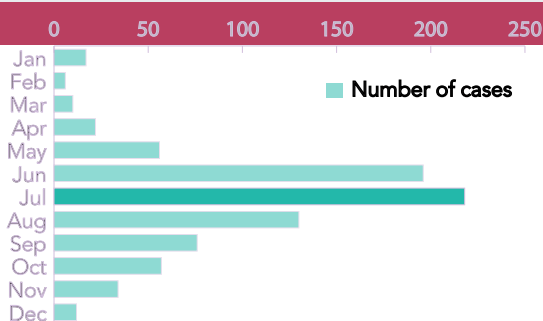
## GEOGRAPHIC DISTRIBUTION OF REPORTED CASES



## SEASONALITY

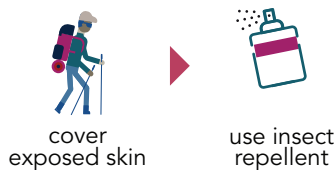
**26%** OF CASES REPORTED AN ILLNESS ONSET IN JULY

**92%** OF CASES REPORTED AN ILLNESS ONSET BETWEEN MAY AND NOVEMBER



## TIPS TO AVOID TICK BITES

### PROTECTING YOURSELF WHEN DOING OUTDOOR ACTIVITIES



### REDUCING RISK

