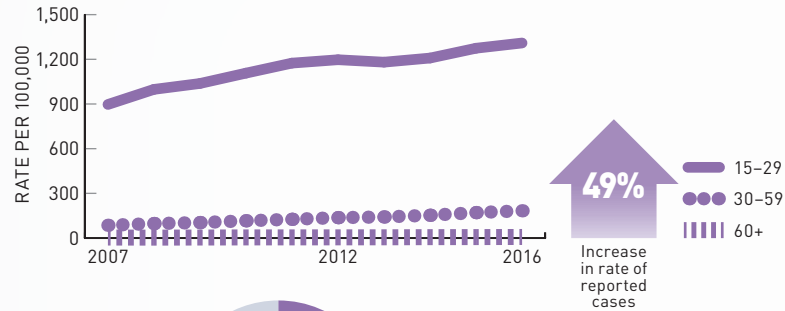


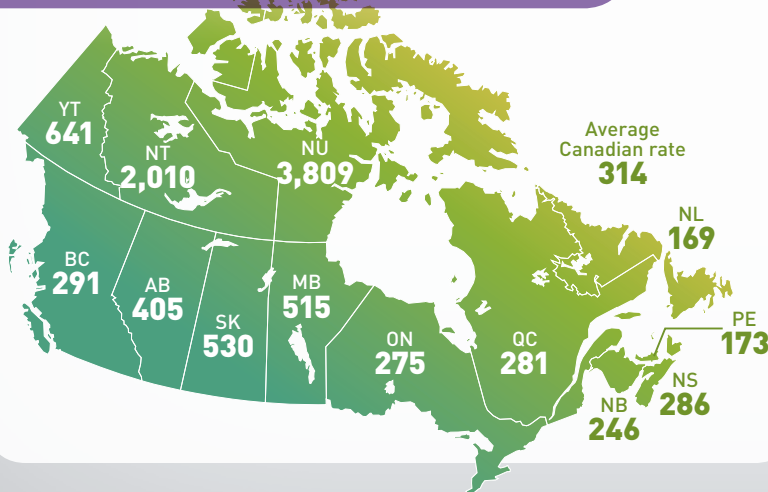
# CHLAMYDIA, GONORRHEA, AND SYPHILIS IN CANADA

## CHLAMYDIA

### TRENDS IN CHLAMYDIA BY AGE (2007–2016)<sup>1</sup>

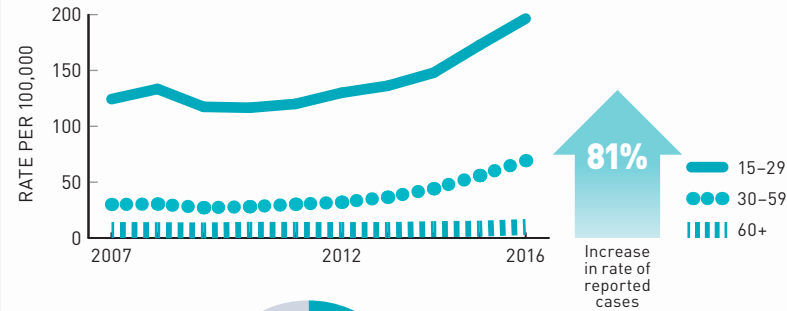


### AVERAGE ANNUAL CRUDE RATES OF REPORTED CHLAMYDIA CASES PER 100,000 (2012–2016)<sup>1</sup>



## GONORRHEA

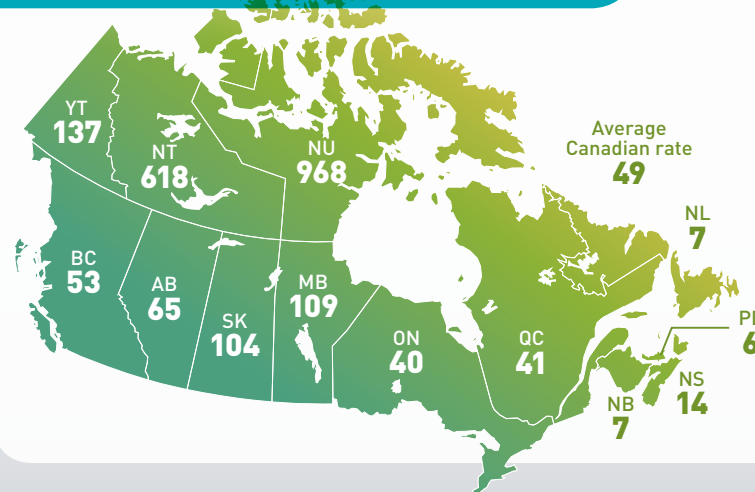
### TRENDS IN GONORRHEA BY AGE (2007–2016)<sup>1</sup>



Multidrug-resistant gonorrhoea is an emerging issue

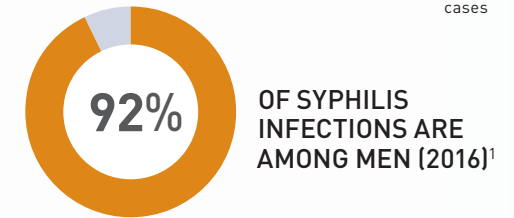
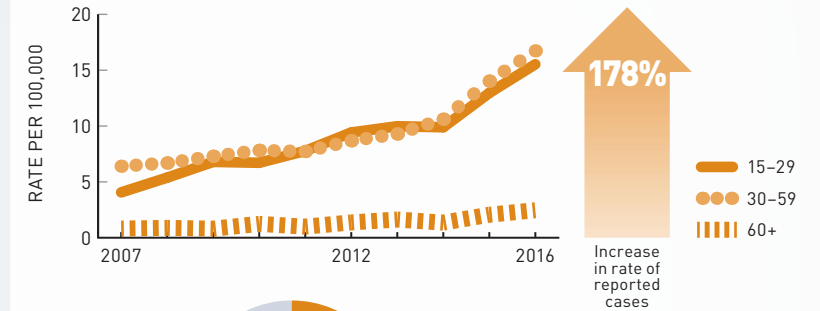


### AVERAGE ANNUAL CRUDE RATES OF REPORTED GONORRHEA CASES PER 100,000 (2012–2016)<sup>1</sup>

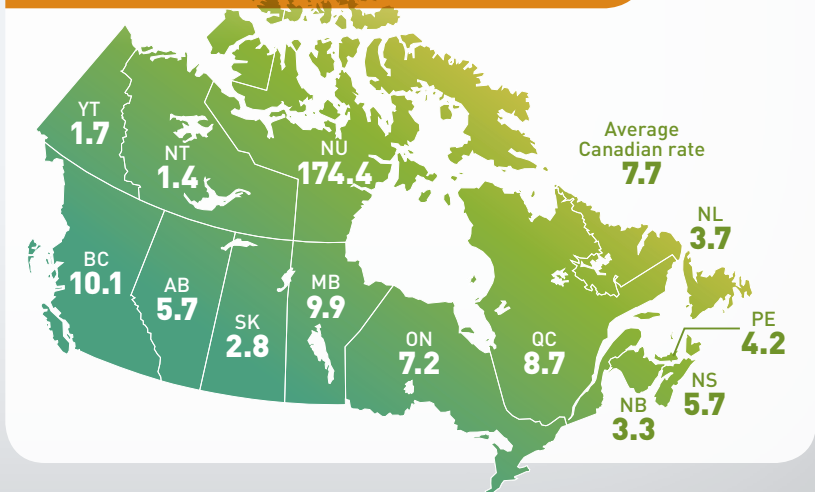


## SYPHILIS

### TRENDS IN SYPHILIS BY AGE (2007–2016)<sup>1</sup>



### AVERAGE ANNUAL CRUDE RATES OF REPORTED SYPHILIS CASES PER 100,000 (2012–2016)<sup>1</sup>



For a more in-depth analysis of trends, as well as a description of methodology, please refer to the report: Update on STI in Canada, 2016.

**REFERENCES:**

1. PHAC. (2018). Canadian Notifiable Diseases Surveillance System.

© Her Majesty the Queen in Right of Canada, as represented by the Minister of Health, 2018. Cat.: HP40-229/2018E-PDF | ISBN: 978-0-660-28216-9 | Pub.: 180349