

Respiratory Virus Detections in Canada

Respiratory Virus Report, Week 12 - ending March 24, 2018

The Respiratory Virus Detection Surveillance System collects data from select laboratories across Canada on the number of tests performed and the number of tests positive for influenza and other respiratory viruses. Data are reported on a weekly basis year-round to the Centre for Immunization and Respiratory Infectious Diseases (CIRID), Public Health Agency of Canada. These data are also summarized in the weekly FluWatch report.

Table 1: Respiratory Virus Detections/Isolations for the week ending March 24, 2018 (Reporting Week 201812)

Reporting Laboratory	Flu Tested	A(H1N1)pdm09 Positive	A(H3) Positive	A(UnS) Positive	Total Flu A Positive	Total Flu B Positive	RSV Tested	RSV Positive	PIV Tested	PIV 1 Positive	PIV 2 Positive	PIV 3 Positive	PIV 4 Positive	Other PIV Positive	Adeno Tested	Adeno Positive	hMPV Tested	hMPV Positive	Entero/Rhino Tested	Entero/Rhino Positive	Coron Tested	Coron Positive
Newfoundland	270	0	0	41	41	35	270	18	270	1	0	1	0	0	270	4	270	17	270	4	N.A.	N.A.
Prince Edward Island	41	1	5	0	6	4	42	5	4	0	0	0	0	0	4	1	4	1	4	1	4	2
Nova Scotia	168	0	0	27	27	17	168	29	15	0	0	0	0	0	15	0	15	1	15	0	15	1
New Brunswick	495	0	0	50	50	64	495	42	93	0	1	4	0	0	93	1	93	8	93	7	93	17
Atlantic	974	1	5	118	124	120	975	94	382	1	1	5	0	0	382	6	382	27	382	12	112	20
Région Nord-Est	353	0	0	36	36	32	320	38	0	0	0	0	0	0	0	0	0	0	N.A.	N.A.	0	0
Québec-Chaudière-Appalaches	566	0	0	49	49	71	518	36	62	0	0	0	0	0	61	4	57	2	N.A.	N.A.	57	0
Centre-du-Québec	658	0	0	64	64	65	514	41	0	0	0	0	0	0	0	0	0	0	N.A.	N.A.	0	0
Montréal-Laval	1358	0	0	132	132	100	1311	71	572	1	0	11	0	0	572	18	563	22	N.A.	N.A.	480	12
Ouest du Québec	407	0	0	30	30	58	206	18	0	0	0	0	0	0	0	0	0	0	N.A.	N.A.	0	0
Montérégie	359	0	0	20	20	28	359	29	0	0	0	0	0	0	0	0	0	0	N.A.	N.A.	0	0
Province of Québec	3701	0	0	331	331	354	3228	233	634	1	0	11	0	0	633	22	620	24	N.A.	N.A.	537	12
Ottawa P.H.L.	19	0	4	1	5	2	9	0	9	0	0	0	0	0	9	0	7	2	2	0	0	0
CHEO - Ottawa	0	0	0	0	0	0	0	0	0	0	0	0	0	0	0	0	0	0	0	0	0	0
Kingston P.H.L.	19	0	4	2	6	1	5	0	5	0	0	0	0	0	5	0	4	0	1	0	0	0
UHN / Mount Sinai Hospital	0	0	0	0	0	0	0	0	0	0	0	0	0	0	0	0	0	0	N.A.	N.A.	N.A.	N.A.
P.H.O.L. - Toronto	439	8	41	4	53	32	335	3	335	0	0	3	0	0	335	2	329	10	6	0	0	0
Sick Kids Hospital - Toronto	84	0	2	5	7	6	49	3	49	0	1	2	0	0	49	2	49	2	49	7	49	1
Sunnybrook & Women's College HSC	113	0	17	0	17	5	113	1	113	0	0	1	1	0	113	0	113	8	113	7	113	3
Sault Ste. Marie P.H.L.	13	0	1	0	1	3	9	0	9	1	0	0	0	0	9	0	9	0	0	0	0	0
Timmins P.H.L.	20	0	1	0	1	2	17	1	17	0	0	0	0	0	17	0	17	0	0	0	0	0
St. Joseph's - London	178	0	0	12	12	8	178	10	40	0	0	1	0	0	40	0	40	5	14	2	14	1
London P.H.L.	115	1	12	4	17	3	89	6	89	0	1	1	0	0	89	0	89	7	0	0	0	0
Orillia P.H.L.	46	1	4	1	6	6	8	1	8	0	0	0	0	0	8	0	7	1	1	0	0	0
Thunder Bay P.H.L.	38	0	3	0	3	9	26	0	26	0	0	0	0	0	26	0	26	1	0	0	0	0
Sudbury P.H.L.	29	0	0	0	0	6	24	1	24	0	0	0	0	0	24	0	23	0	1	0	0	0
Hamilton P.H.L.	126	1	9	2	12	11	99	4	99	0	0	0	0	0	99	1	97	2	2	0	0	0
Peterborough P.H.L.	40	0	6	2	8	1	22	1	22	0	0	0	0	0	22	0	22	1	0	0	0	0
Province of Ontario	1279	11	104	33	148	95	983	31	845	1	2	8	1	0	845	5	832	39	189	16	176	5
Manitoba	267	1	2	2	5	49	269	32	80	2	0	0	0	0	80	2	39	0	80	3	39	2
Regina	0	0	0	0	0	0	0	0	0	0	0	0	0	0	0	0	0	0	0	0	0	0
Saskatoon	0	0	0	0	0	0	0	0	0	0	0	0	0	0	0	0	0	0	0	0	0	0
Province of Saskatchewan	0	0	0	0	0	0	0	0	0	0	0	0	0	0	0	0	0	0	0	0	0	0
Province of Alberta	833	12	13	2	27	90	707	0	707	4	2	11	4	0	707	14	707	72	707	88	707	37
Prairies	1100	13	15	4	32	139	976	32	787	6	2	11	4	0	787	16	746	72	787	91	746	39
British Columbia	736	46	55	16	117	122	736	9	264	1	0	3	1	0	264	8	264	42	191	35	191	17
Yukon	14	0	2	3	5	0	14	1	N.A.	N.A.	N.A.	N.A.	N.A.	N.A.	N.A.	N.A.	N.A.	N.A.	N.A.	N.A.	N.A.	N.A.
Northwest Territories	9	0	0	0	0	1	9	0	9	0	0	1	2	0	9	1	9	0	9	1	9	0
Nunavut	3	0	1	0	1	0	3	0	3	0	0	0	0	0	3	0	3	0	3	0	3	1
Territories	26	0	3	3	6	1	26	1	12	0	0	1	2	0	12	1	12	0	12	1	12	1
CANADA	7816	71	182	505	758	831	6924	400	2924	10	5	39	8	0	2923	58	2856	204	1561	155	1774	94

Specimens from Yukon (YT), Northwest Territories (NT) and Nunavut (NU) are sent to reference laboratories in other provinces and reported results reflect specimens identified as originating from YT, NT or NU.

Delays in the reporting of data may cause data to change retrospectively.

Table 2: Respiratory Virus Detections/Isolations for the period August 27, 2017 - March 24, 2018 (Reporting Weeks 201735-201812)

Reporting Laboratory	Flu Tested	A(H1N1)pdm09 Positive	A(H3) Positive	A(UnS) Positive	Total Flu A Positive	Total Flu B Positive	RSV Tested	RSV Positive	PIV Tested	PIV 1 Positive	PIV 2 Positive	PIV 3 Positive	PIV 4 Positive	Other PIV Positive	Adeno Tested	Adeno Positive	hMPV Tested	hMPV Positive	Entero/Rhino Tested	Entero/Rhino Positive	Coron Tested	Coron Positive
Newfoundland	3299	0	3	320	323	330	3299	146	3299	96	18	34	0	0	3299	41	3300	186	3299	178	N.A.	N.A.
Prince Edward Island	1004	6	102	0	108	148	1027	155	58	1	0	0	2	0	58	4	58	1	58	8	58	6
Nova Scotia	3092	0	0	442	442	226	3122	448	413	5	1	2	1	0	413	6	413	14	413	60	413	15
New Brunswick	8098	11	202	1029	1242	897	7650	464	2047	26	33	8	13	0	2047	42	2047	96	2047	237	2047	130
Atlantic	15483	17	307	1791	2115	1601	15098	1213	5817	128	52	44	16	0	5817	93	5818	297	5817	483	2518	151
Région Nord-Est	11347	0	0	1734	1734	1310	9685	682	0	0	0	0	0	0	0	0	0	0	N.A.	N.A.	0	0
Québec-Chaudière-Appalaches	13912	0	0	2484	2484	1947	13510	1217	2473	40	1	0	19	0	2512	88	2102	11	N.A.	N.A.	2032	18
Centre-du-Québec	16690	0	0	2633	2633	2522	13274	1268	0	0	0	0	0	0	0	0	0	0	N.A.	N.A.	0	0
Montréal-Laval	39154	0	0	4737	4737	3561	34053	2297	17337	196	24	91	42	0	17509	567	16811	362	N.A.	N.A.	15389	542
Ouest du Québec	11365	0	0	1743	1743	1449	7054	654	0	0	0	0	0	0	0	0	0	0	N.A.	N.A.	0	0
Montérégie	7502	0	0	1165	1165	790	7360	568	0	0	0	0	0	0	0	0	0	0	N.A.	N.A.	0	0
Province of Québec	9970	0	0	14496	14496	11579	84936	6686	19810	236	25	91	61	0	20021	655	18913	373	N.A.	N.A.	17421	560
Ottawa P.H.L.	789	2	108	49	159	119	424	10	424	4	0	1	0	0	424	3	413	7	29	6	10	1
CHEO - Ottawa	6630	0	0	668	668	470	6629	612	649	12	1	2	8	0	676	22	731	19	675	145	675	36
Kingston P.H.L.	890	4	94	34	132	84	630	25	630	9	0	1	1	0	630	5	587	11	108	7	22	0
UHN / Mount Sinai Hospital	9129	0	2	534	536	491	9129	340	542	7	2	0	8	0	0	0	520	10	N.A.	N.A.	N.A.	N.A.
P.H.O.L. - Toronto	13174	136	1344	108	1588	1039	10087	255	10087	105	9	21	1	0	10087	86	9805	118	649	48	234	5
Sick Kids Hospital - Toronto	2571	12	52	111	175	166	1982	191	1982	29	3	16	27	0	1982	43	1982	120	1982	445	1982	112
Sunnybrook & Women's College HSC	2387	9	188	3	200	155	2387	66	2387	21	8	4	10	0	2387	0	2387	48	2387	174	2387	83
Sault Ste. Marie P.H.L.	528	1	88	8	97	41	383	8	383	8	0	0	1	0	383	0	374	2	22	3	12	0
Timmins P.H.L.	389	6	75	5	86	33	270	16	270	1	0	0	0	0	270	1	262	1	18	1	2	0
St. Joseph's - London	3831	0	0	353	353	399	3831	346	1111	24	1	3	11	0	1064	27	1037	39	596	128	546	19
London P.H.L.	4066	21	410	94	525	616	2678	170	2678	36	3	14	3	0	2678	11	2604	53	229	21	63	0
Orillia P.H.L.	1308	6	134	51	191	105	929	46	929	18	0	2	0	0	929	6	918	20	38	4	11	0
Thunder Bay P.H.L.	1019	0	194	19	213	69	727	22	727	12	2	3	0	0	727	5	716	13	14	0	3	0
Sudbury P.H.L.	993	3	112	5	120	74	790	8	790	8	2	0	0	0	789	4	758	0	51	1	13	0
Hamilton P.H.L.	3007	25	176	83	284	316	2231	125	2230	32	5	9	3	0	2230	24	2166	44	170	21	64	2
Peterborough P.H.L.	1589	4	81	45	130	121	1270	40	1270	21	0	2	0	0	1270	5	1266	25	51	12	44	2
Province of Ontario	52300	229	3058	2170	5457	4298	44377	2280	27089	347	36	78	73	0	26526	242	26526	530	7019	1016	6068	260
Manitoba	9597	9	373	736	1118	505	9380	468	3449	58	13	2	10	0	3449	50	1744	82	3449	308	1744	76
Regina	10842	43	1138	59	1240	1071	10842	448	10842	367	103	20	37	0	10842	176	10842	601	10842	1790	10842	728
Saskatoon	4474	0	0	365	365	290	4474	171	4373	32	3	8	2	0	4474	38	4474	64	4324	379	4474	81
Province of Saskatchewan	15316	43	1138	424	1605	1361	15316	619	15215	399	106	28	39	0	15316	214	15316	665	15166	2169	15316	809
Province of Alberta	32593	179	3970	1383	5532	3079	26044	0	26044	522	165	124	259	0	26044	407	26044	1519	26044	3446	26044	1251
Prairies	57506	231	5481	2543	8255	4945	50740	1087	44708	979	284	154	308	0	44809	671	43104	2266	44659	5923	43104	2136
British Columbia	18179	458	1390	416	2264	2775	18180	706	7187	163	47	34	74	0	7187	68	7187	314	5197	1145	5197	358
Yukon	379	7	44	21	72	42	379	37	N.A.	N.A.	N.A.	N.A.	N.A.	N.A.	N.A.	N.A.	N.A.	N.A.	N.A.	N.A.	N.A.	N.A.
Northwest Territories	571	4	125	0	129	39	565	0	565	11	0	1	18	0	565	10	565	34	565	67	565	46
Nunavut	336	6	37	0	43	3	323	8	324	7	4	13	2	0	323	22	321	18	150	36	141	8
Territories	1286	17	206	21	244	84	1267	45	889	18	4	14	20	0	888	32	886	52	715	103	706	54
CANADA	244724	952	10442	21437	32831	25282	214598	12017	105500	1871	448	415	552	0	105248	1761	102434	3832	63407	8670	75014	3519

Specimens from YT, NT and NU are sent to reference laboratories in other provinces and reported results reflect specimens identified as originating from YT, NT or NU.

Delays in the reporting of data may cause data to change retrospectively.

Due to reporting delays, the sum of weekly report totals do not add up to cumulative totals.

Figure 1: Number positive laboratory tests for other respiratory viruses by report week, Canada, 2017-18

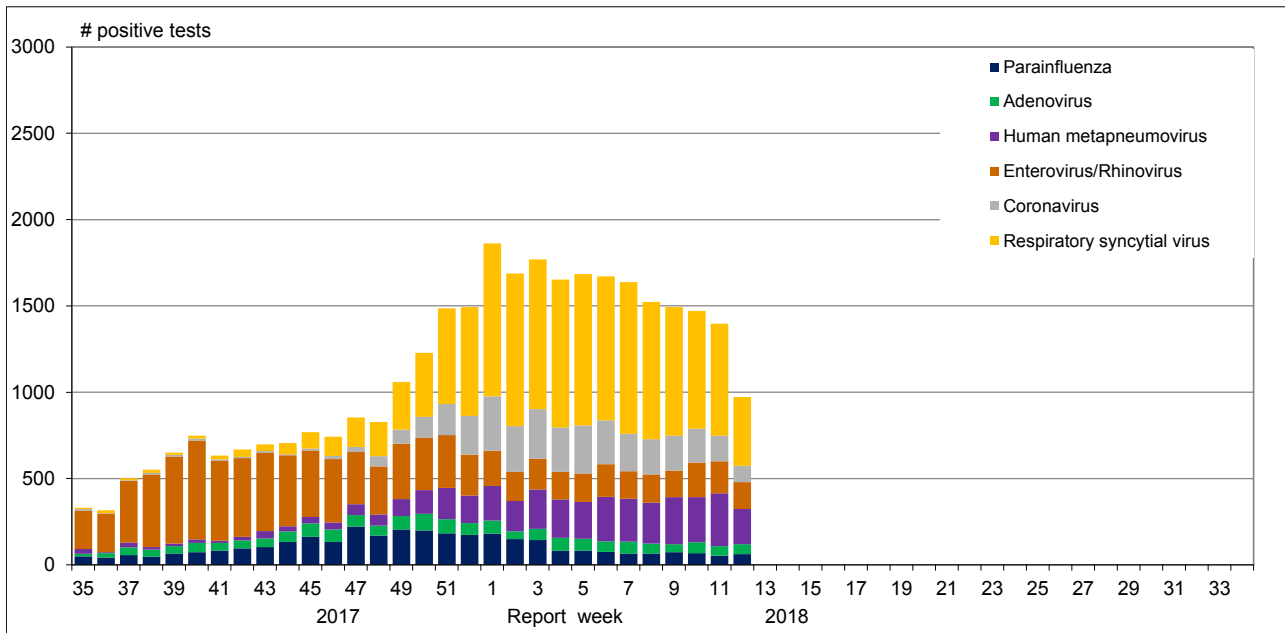


Figure 2: Positive Influenza Tests (%) in Canada by Region by Week of Report

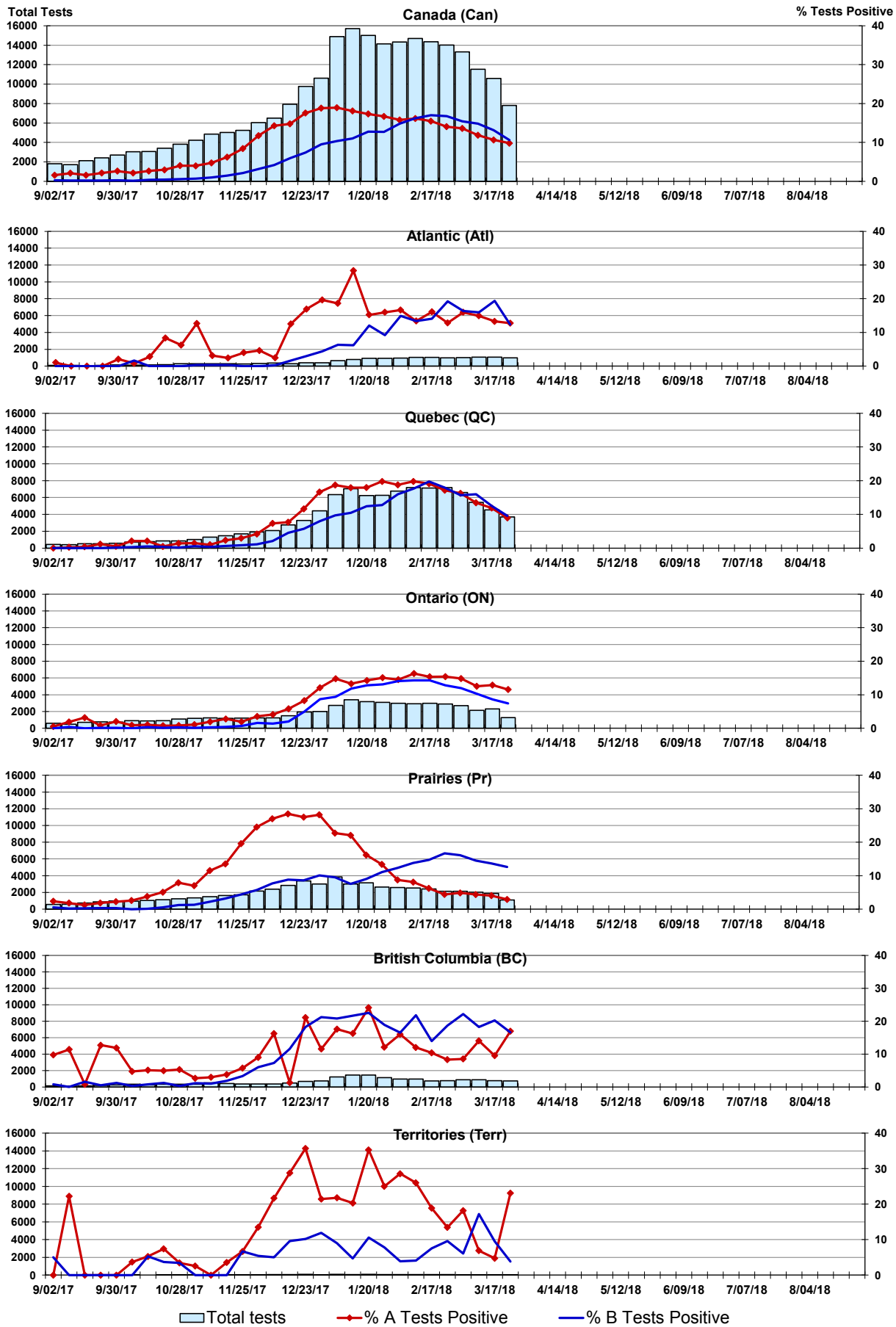


Figure 3: Positive Respiratory syncytial virus (RSV) Tests (%) in Canada by Region by Week of Report

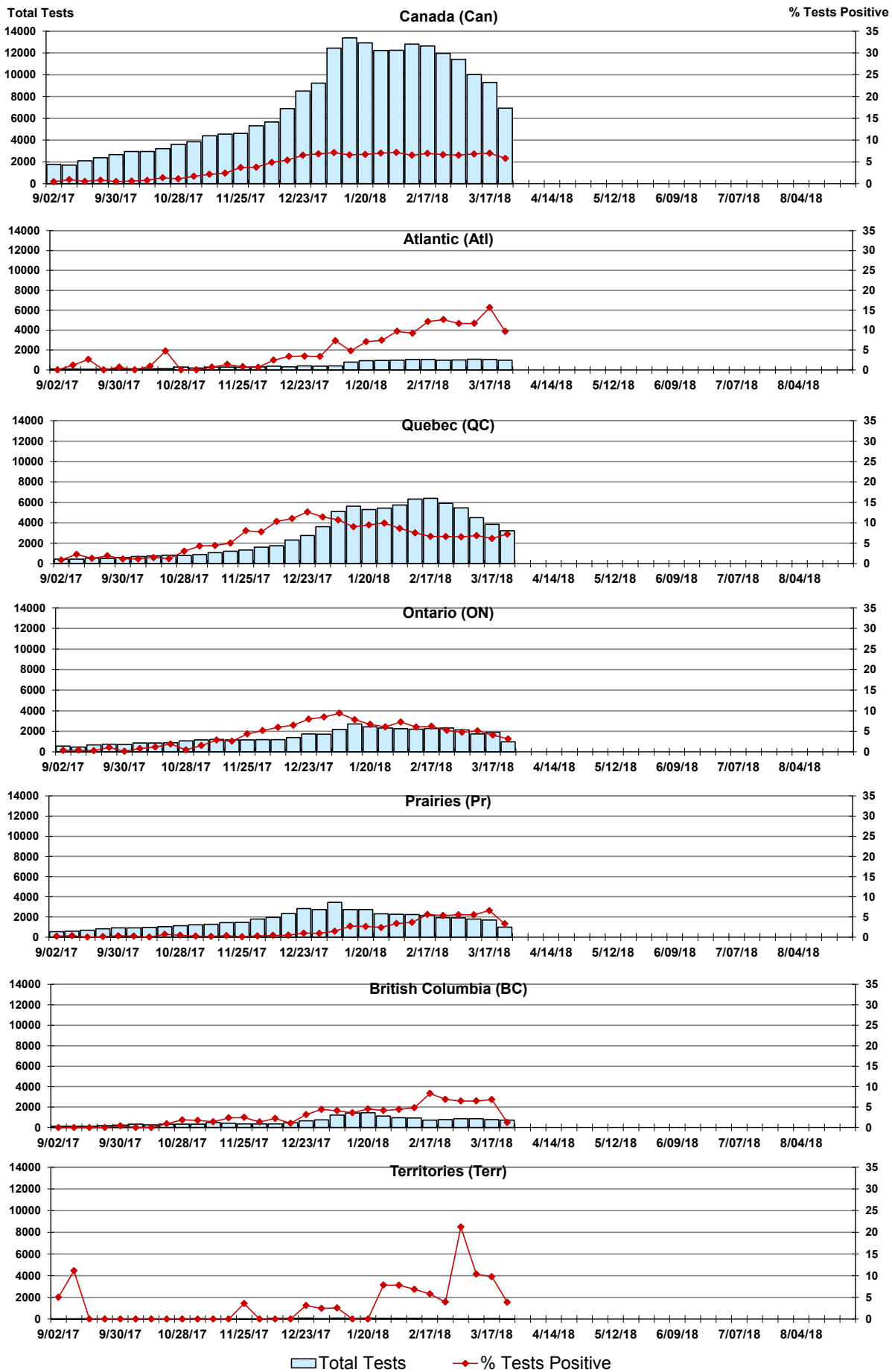


Figure 4: Positive Parainfluenza (PIV) Tests (%) in Canada by Region by Week of Report

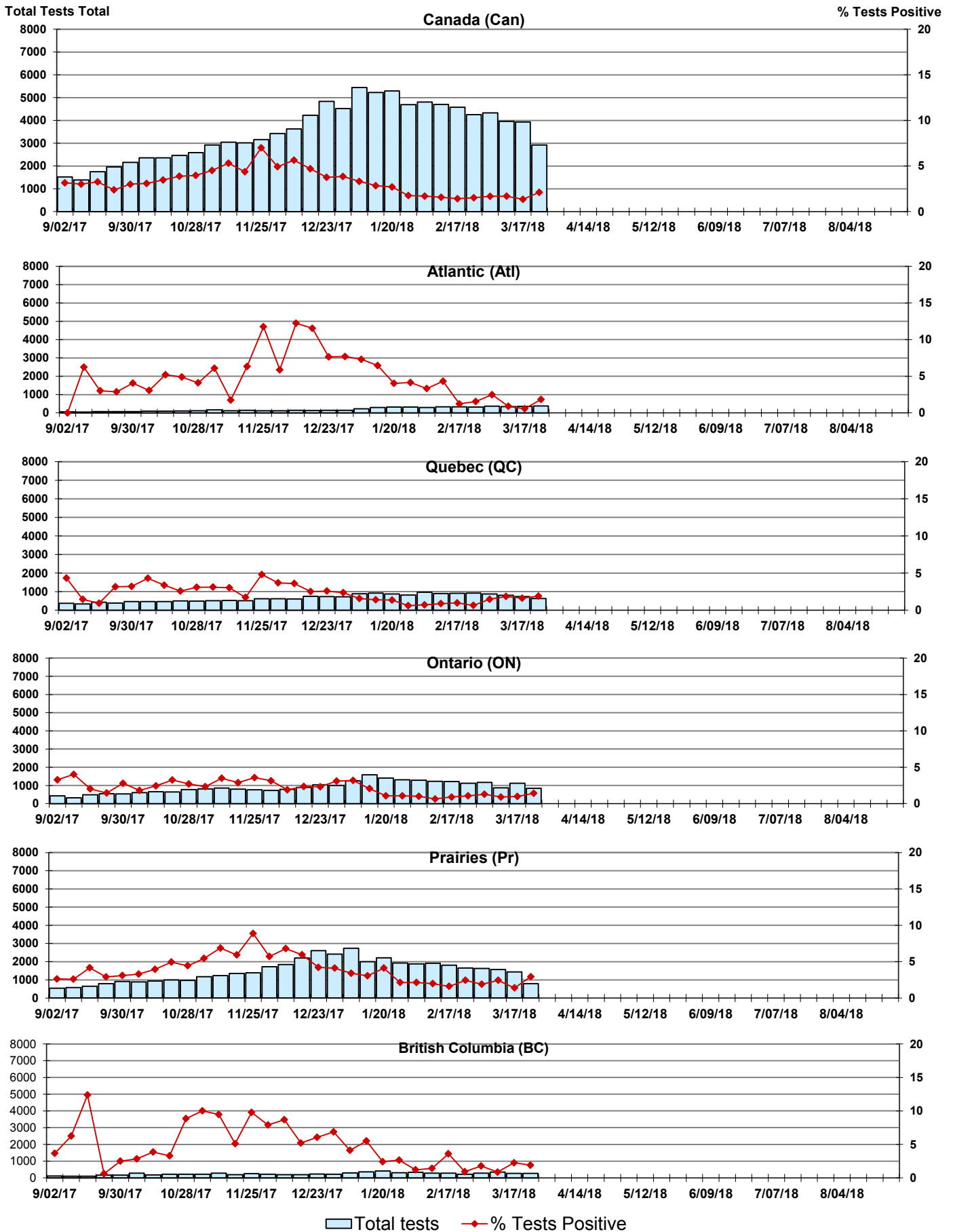


Figure 5: Positive Adenovirus (adeno) Tests (%) in Canada by Region by Week of Report

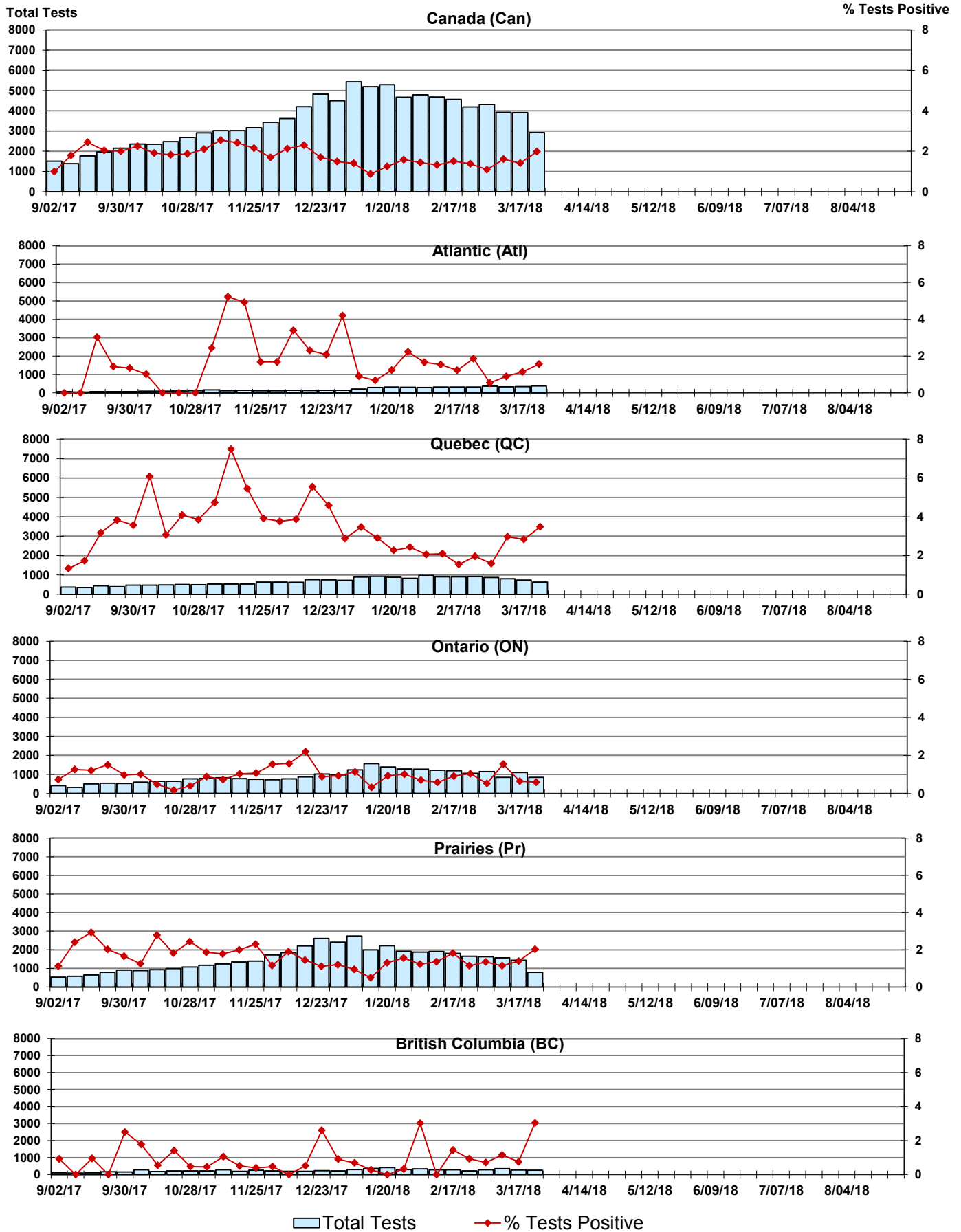


Figure 6: Positive human metapneumovirus (hMPV) Tests (%) in Canada by Region by Week of Report

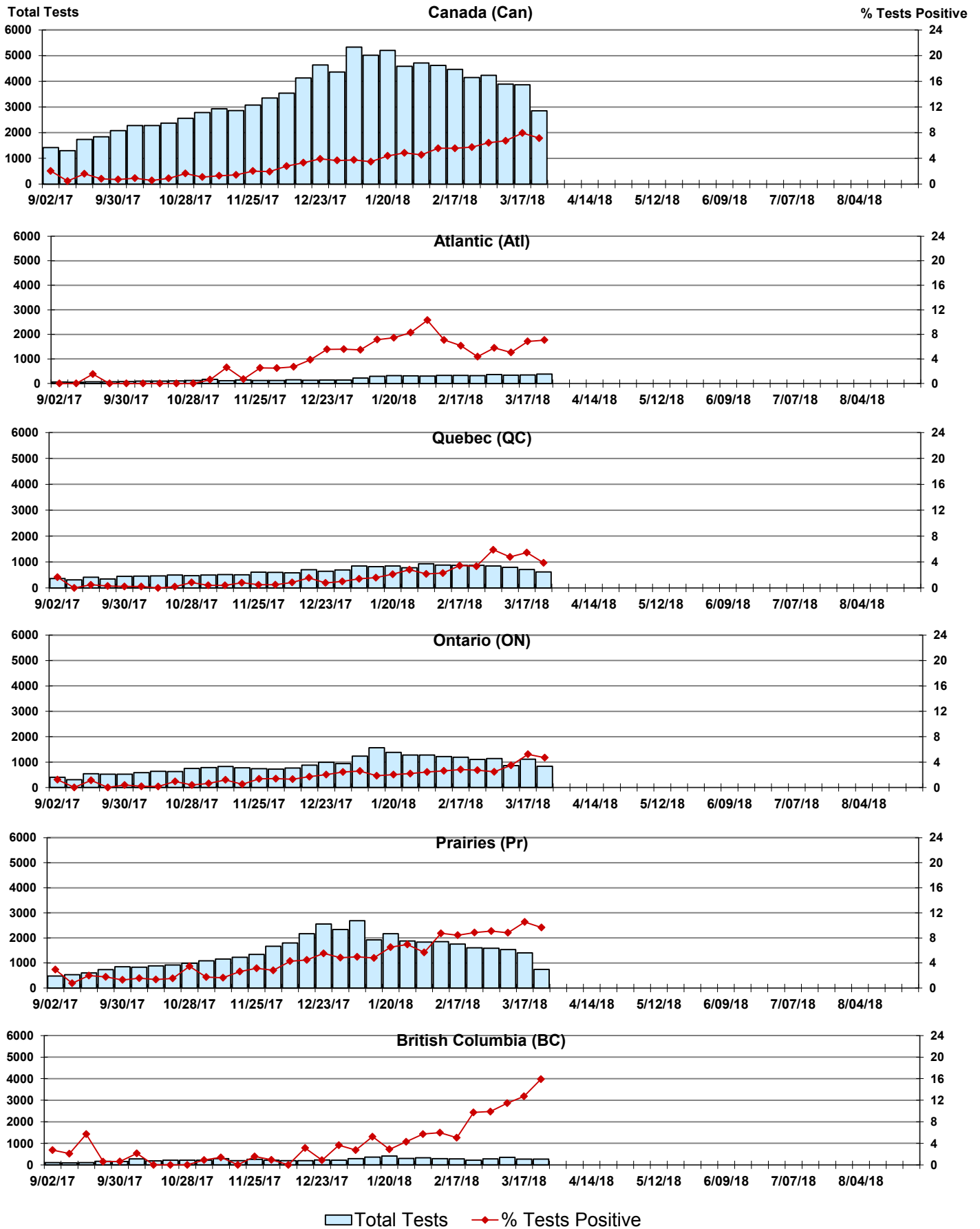


Figure 7: Positive Enterovirus/Rhinovirus (entero/rhino) Tests (%) in Canada by Region by Week of Report

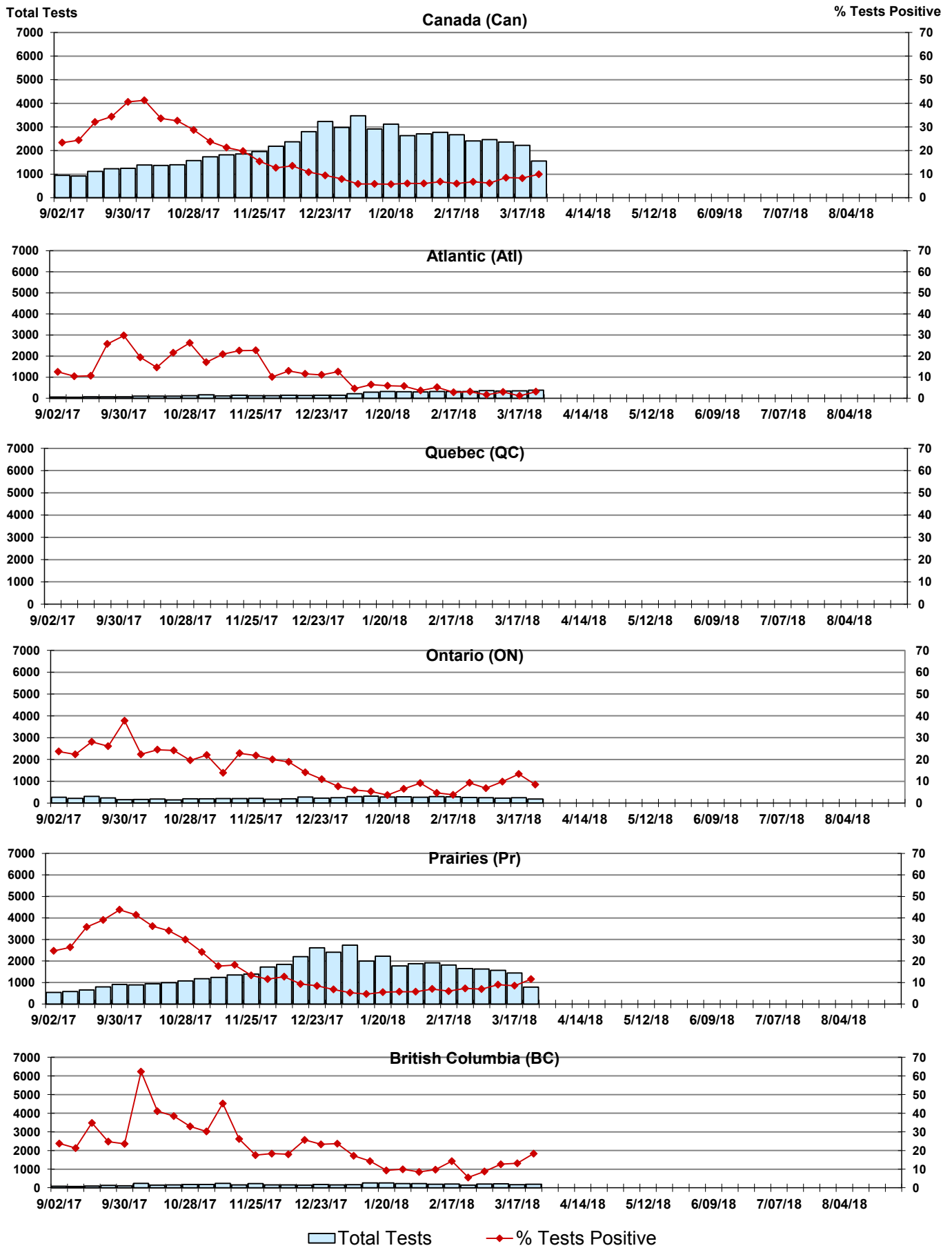
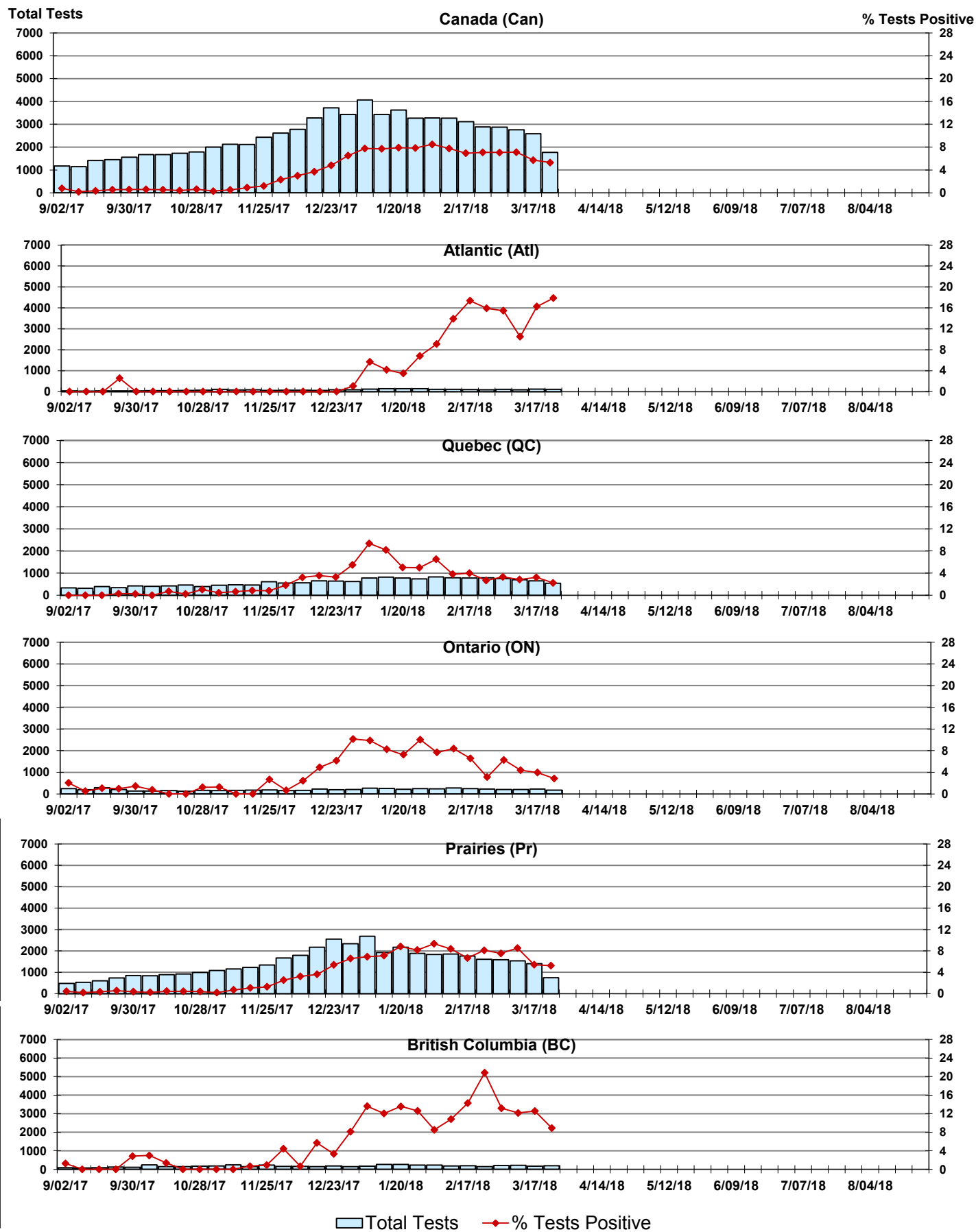


Figure 8: Positive Coronavirus (coron) Tests (%) in Canada by Region by Week of Report



Abbreviations:

A(H1N1)pdm09: Influenza A(H1N1)pdm09

A(H3): Influenza A(H3N2)

A (UnS): Influenza A (Unsubtyped)

Adeno: Adenovirus

CHEO: Children's Hospital of Eastern Ontario

Coron: Coronavirus

Entero: Enterovirus

hMPV: human metapneumovirus

HSC: Health Sciences Centre

N.A.: Not Applicable

P.H.L.: Public Health Laboratory

P.H.O.L.: Public Health Ontario Laboratory

PIV: Parainfluenza

Rhino: Rhinovirus

RSV: Respiratory syncytial virus

UHN: University Health Network

Notes:

Specimens from Yukon (YT), Northwest Territories (NT) and Nunavut (NU) are sent to reference laboratories in other provinces. Results reported for the Territories reflect the number of specimens that are identified as originating from YT, NT or NU.

Delays in the reporting of data may cause data to change retrospectively.

Due to reporting delays, the sum of weekly report totals do not add up to cumulative totals.