

Respiratory Virus Detections in Canada

Respiratory Virus Report, Week 15- ending April 14, 2018

The Respiratory Virus Detection Surveillance System collects data from select laboratories across Canada on the number of tests performed and the number of tests positive for influenza and other respiratory viruses. Data are reported on a weekly basis year-round to the Centre for Immunization and Respiratory Infectious Diseases (CIRID), Public Health Agency of Canada. These data are also summarized in the weekly FluWatch report.

Table 1: Respiratory Virus Detections/Isolations for the week ending April 14, 2018 (Reporting Week 201815)

Reporting Laboratory	Flu Tested	A(H1N1)pdm09 Positive	A(H3) Positive	A(UnS) Positive	Total Flu A Positive	Total Flu B Positive	RSV Tested	RSV Positive	PIV Tested	PIV 1 Positive	PIV 2 Positive	PIV 3 Positive	PIV 4 Positive	Other PIV Positive	Adeno Tested	Adeno Positive	hMPV Tested	hMPV Positive	Entero/Rhino Tested	Entero/Rhino Positive	Coron Tested	Coron Positive
Newfoundland	141	0	0	33	33	16	141	13	141	0	0	0	0	0	141	1	141	3	141	5	N.A.	N.A.
Prince Edward Island	31	1	1	0	2	5	31	1	2	0	0	0	0	0	2	0	2	1	2	0	2	0
Nova Scotia	144	0	0	10	10	12	144	10	27	0	0	0	0	0	27	0	27	5	27	2	27	0
New Brunswick	533	9	0	57	66	72	536	52	91	0	1	3	0	0	91	4	91	6	91	11	91	5
Atlantic	849	10	1	100	111	105	852	76	261	0	1	3	0	0	261	5	261	15	261	18	120	5
Région Nord-Est	318	0	0	20	20	13	287	34	0	0	0	0	0	0	0	0	0	0	N.A.	N.A.	0	0
Québec-Chaudière-Appalaches	209	0	0	14	14	11	240	12	71	0	0	0	0	0	74	8	59	3	N.A.	N.A.	58	1
Centre-du-Québec	483	0	0	32	32	27	387	32	0	0	0	0	0	0	0	0	0	0	N.A.	N.A.	0	0
Montréal-Laval	1081	0	0	49	49	43	1061	71	506	1	1	11	1	0	506	13	500	29	N.A.	N.A.	449	5
Ouest du Québec	309	0	0	33	33	11	245	19	0	0	0	0	0	0	0	0	0	0	N.A.	N.A.	0	0
Montérégie	251	0	0	17	17	11	251	12	0	0	0	0	0	0	0	0	0	0	N.A.	N.A.	0	0
Province of Québec	2651	0	0	165	165	116	2471	180	577	1	1	11	1	0	580	21	559	32	N.A.	N.A.	507	6
Ottawa P.H.L.	26	1	1	2	4	5	9	0	9	0	0	0	0	0	9	0	7	1	2	0	0	0
CHEO - Ottawa	0	0	0	0	0	0	0	0	0	0	0	0	0	0	0	0	0	0	0	0	0	0
Kingston P.H.L.	14	0	0	0	0	1	12	0	12	0	0	0	0	0	12	0	12	2	1	0	0	0
UHN / Mount Sinai Hospital	306	0	0	16	16	11	306	7	17	0	0	0	0	0	0	0	17	1	N.A.	N.A.	N.A.	N.A.
P.H.O.L. - Toronto	379	4	52	3	59	28	273	1	274	2	0	8	0	0	273	3	265	15	8	0	0	0
Sick Kids Hospital - Toronto	70	1	3	0	4	2	62	3	62	0	0	5	1	0	62	1	62	4	62	20	62	4
Sunnybrook & Women's College HSC	90	0	1	0	1	3	90	2	90	0	0	3	0	0	90	0	90	6	90	9	90	3
Sault Ste. Marie P.H.L.	22	0	1	0	1	3	19	0	19	1	0	0	0	0	19	0	18	1	1	0	0	0
Timmins P.H.L.	13	0	0	3	3	0	10	1	10	0	0	0	0	0	10	0	10	0	0	0	0	0
St. Joseph's - London	167	0	0	21	21	7	167	5	53	0	1	4	0	0	53	2	53	2	32	3	32	1
London P.H.L.	107	1	11	4	16	5	70	2	70	0	0	1	0	0	70	0	70	0	0	0	0	0
Orillia P.H.L.	39	0	2	5	7	7	17	1	17	0	0	0	0	0	17	0	17	0	0	0	0	0
Thunder Bay P.H.L.	13	0	0	0	0	1	8	0	8	0	0	0	0	0	8	0	8	0	0	0	0	0
Sudbury P.H.L.	25	0	0	0	0	3	22	0	22	0	0	0	0	0	22	0	22	1	0	0	0	0
Hamilton P.H.L.	63	2	8	2	12	5	42	1	42	1	0	0	0	0	42	1	42	1	0	0	0	0
Peterborough P.H.L.	31	1	6	5	12	1	10	0	10	0	0	0	0	0	10	0	8	0	2	0	0	0
Province of Ontario	1365	10	85	61	156	82	1117	23	715	4	1	21	1	0	697	7	701	34	198	32	184	8
Manitoba	252	1	0	0	1	27	246	21	147	0	0	1	2	0	147	1	96	14	147	18	96	5
Regina	396	5	1	0	6	48	396	64	396	0	9	5	3	0	396	4	396	23	396	79	396	9
Saskatoon	108	0	0	3	3	5	108	4	108	0	0	1	0	0	108	0	108	2	108	5	108	1
Province of Saskatchewan	504	5	1	3	9	53	504	68	504	0	9	6	3	0	504	4	504	25	504	84	504	10
Province of Alberta	702	10	3	5	18	52	597	0	597	1	0	19	12	0	597	12	597	59	597	94	597	30
Prairies	1458	16	4	8	28	132	1347	89	1248	1	9	26	17	0	1248	17	1197	98	1248	196	1197	45
British Columbia	380	18	25	10	53	35	380	21	186	0	0	2	0	0	186	1	186	26	144	20	144	6
Yukon	13	0	3	0	3	0	13	3	N.A.	N.A.	N.A.	N.A.	N.A.	N.A.	N.A.	N.A.	N.A.	N.A.	N.A.	N.A.	N.A.	N.A.
Northwest Territories	12	0	1	0	1	3	12	0	12	0	0	0	0	0	12	3	12	1	12	0	12	0
Nunavut	3	0	0	0	0	0	3	0	3	0	0	0	0	0	3	0	3	0	2	1	2	1
Territories	28	0	4	0	4	3	28	3	15	0	0	0	0	0	15	3	15	1	14	1	14	1
CANADA	6731	54	119	344	517	473	6195	392	3002	6	12	63	19	0	2987	54	2919	206	1865	267	2166	71

Specimens from Yukon (YT), Northwest Territories (NT) and Nunavut (NU) are sent to reference laboratories in other provinces and reported results reflect specimens identified as originating from YT, NT or NU. Delays in the reporting of data may cause data to change retrospectively.

Table 2: Respiratory Virus Detections/Isolations for the period August 27, 2017 - April 14, 2018 (Reporting Weeks 201735-201815)

Reporting Laboratory	Flu Tested	A(H1N1)pdm09 Positive	A(H3) Positive	A(UnS) Positive	Total Flu A Positive	Total Flu B Positive	RSV Tested	RSV Positive	PIV Tested	PIV 1 Positive	PIV 2 Positive	PIV 3 Positive	PIV 4 Positive	Other PIV Positive	Adeno Tested	Adeno Positive	hMPV Tested	hMPV Positive	Entero/Rhino Tested	Entero/Rhino Positive	Coron Tested	Coron Positive
Newfoundland	3773	0	3	419	422	392	3773	182	3773	97	18	34	0	0	3773	46	3774	203	3773	191	N.A.	N.A.
Prince Edward Island	1129	7	119	1	127	161	1152	168	65	1	0	2	0	0	65	4	65	3	65	10	65	6
Nova Scotia	3583	0	0	505	505	282	3621	504	463	5	1	2	1	0	463	7	463	21	463	69	463	16
New Brunswick	9452	22	207	1193	1422	1098	9020	642	2311	26	35	12	13	0	2311	50	2311	118	2311	264	2311	138
Atlantic	17937	29	329	2118	2476	1933	17566	1496	6612	129	54	48	16	0	6612	107	6613	345	6612	534	2839	160
Région Nord-Est	12470	0	0	1817	1817	1372	10669	784	0	0	0	0	0	0	0	0	0	0	N.A.	N.A.	0	0
Québec-Chaudière-Appalaches	14727	0	0	2562	2562	2034	14286	1269	2703	40	1	0	19	0	2747	98	2291	16	N.A.	N.A.	2218	21
Centre-du-Québec	18261	0	0	2749	2749	2634	14456	1363	0	0	0	0	0	0	0	0	0	0	N.A.	N.A.	0	0
Montréal-Laval	42509	0	0	4939	4939	3756	37298	2498	18871	201	27	128	48	0	19043	616	18273	463	N.A.	N.A.	16750	565
Ouest du Québec	12300	0	0	1843	1843	1516	7807	709	0	0	0	0	0	0	0	0	0	0	N.A.	N.A.	0	0
Montérégie	8270	0	0	1214	1214	842	8128	610	0	0	0	0	0	0	0	0	0	0	N.A.	N.A.	0	0
Province of Québec	108537	0	0	15124	15124	12154	92644	7233	21574	241	28	128	67	0	21790	714	20564	479	N.A.	N.A.	18968	586
Ottawa P.H.L.	861	4	115	55	174	136	451	11	451	4	0	1	0	0	451	4	437	11	32	6	10	1
CHEO - Ottawa	7118	0	0	721	721	508	7117	642	690	12	1	4	8	0	717	22	772	19	716	153	716	38
Kingston P.H.L.	953	4	102	38	144	89	675	26	675	9	0	1	1	0	675	5	629	14	116	7	22	0
UHN / Mount Sinai Hospital	10386	0	2	593	595	544	10386	368	607	7	2	0	8	0	0	0	585	13	N.A.	N.A.	N.A.	N.A.
P.H.O.L. - Toronto	14407	150	1504	122	1776	1120	11007	261	11008	108	9	42	1	0	11007	98	10700	161	693	48	234	5
Sick Kids Hospital - Toronto	2800	16	58	121	195	171	2152	196	2152	29	3	25	28	0	2152	48	2152	131	2152	502	2152	123
Sunnybrook & Women's College HSC	2681	13	205	3	221	172	2681	72	2681	22	9	9	10	0	2681	1	2681	63	2681	192	2681	92
Sault Ste. Marie P.H.L.	581	1	95	8	104	49	422	8	422	9	0	0	1	0	422	0	412	3	23	3	12	0
Timmins P.H.L.	427	7	76	8	91	34	302	19	302	1	0	0	0	0	302	1	294	1	18	1	2	0
St. Joseph's - London	4302	0	0	399	399	410	4302	362	1239	24	3	8	11	0	1192	30	1165	55	660	140	610	21
London P.H.L.	4404	24	443	109	576	633	2921	184	2921	37	3	18	3	0	2921	12	2844	61	246	21	63	0
Orillia P.H.L.	1401	8	142	56	206	121	1005	51	1005	18	0	2	0	0	1005	6	991	24	41	4	11	0
Thunder Bay P.H.L.	1105	1	196	19	216	88	786	25	786	12	2	3	0	0	786	5	774	16	15	0	3	0
Sudbury P.H.L.	1087	3	114	6	123	88	865	10	865	8	2	0	0	0	864	6	833	2	51	1	13	0
Hamilton P.H.L.	3217	27	200	92	319	336	2368	129	2367	33	5	9	3	0	2367	25	2299	46	179	21	64	2
Peterborough P.H.L.	1692	6	95	52	153	125	1346	41	1346	21	0	2	0	0	1346	5	1338	28	56	12	44	2
Province of Ontario	57422	264	3347	2402	6013	4624	48786	2405	29517	354	39	124	74	0	28888	268	28906	648	7679	1111	6637	284
Manitoba	10371	16	377	736	1129	597	10135	533	3870	58	13	3	12	0	3870	55	2040	116	3870	354	2040	86
Regina	12267	60	1155	60	1275	1292	12267	695	12267	368	120	33	43	0	12267	199	12267	680	12267	2009	12267	806
Saskatoon	5027	0	0	379	379	337	5027	222	4926	32	4	10	3	0	5027	41	5027	73	4877	401	5027	93
Province of Saskatchewan	17294	60	1155	439	1654	1629	17294	917	17193	400	124	43	46	0	17294	240	17294	753	17144	2410	17294	899
Province of Alberta	34910	218	3985	1398	5601	3272	28049	0	28049	530	170	175	276	0	28049	453	28049	1729	28049	3765	28049	1353
Prairies	62575	294	5517	2573	8384	5498	55478	1450	49112	988	307	221	334	0	49213	748	47383	2598	49063	6529	47383	2338
British Columbia	19696	496	1488	435	2419	2974	19697	819	7827	164	51	47	75	0	7827	77	7827	397	5667	1223	5667	380
Yukon	414	7	47	21	75	43	414	44	N.A.	N.A.	N.A.	N.A.	N.A.	N.A.	N.A.	N.A.	N.A.	N.A.	N.A.	N.A.	N.A.	N.A.
Northwest Territories	633	4	126	0	130	55	627	0	627	11	1	1	19	0	627	16	627	41	627	73	627	50
Nunavut	347	6	40	0	46	3	334	8	335	7	4	13	3	0	334	23	332	19	160	39	151	9
Territories	1394	17	213	21	251	101	1375	52	962	18	5	14	22	0	961	39	959	60	787	112	778	59
CANADA	267561	1100	10894	22673	34667	27284	235546	13455	115604	1894	484	582	588	0	115291	1953	112252	4527	69808	9509	82272	3807

Specimens from YT, NT and NU are sent to reference laboratories in other provinces and reported results reflect specimens identified as originating from YT, NT or NU.

Delays in the reporting of data may cause data to change retrospectively.

Due to reporting delays, the sum of weekly report totals do not add up to cumulative totals.

Figure 1: Number positive laboratory tests for other respiratory viruses by report week, Canada, 2017-18

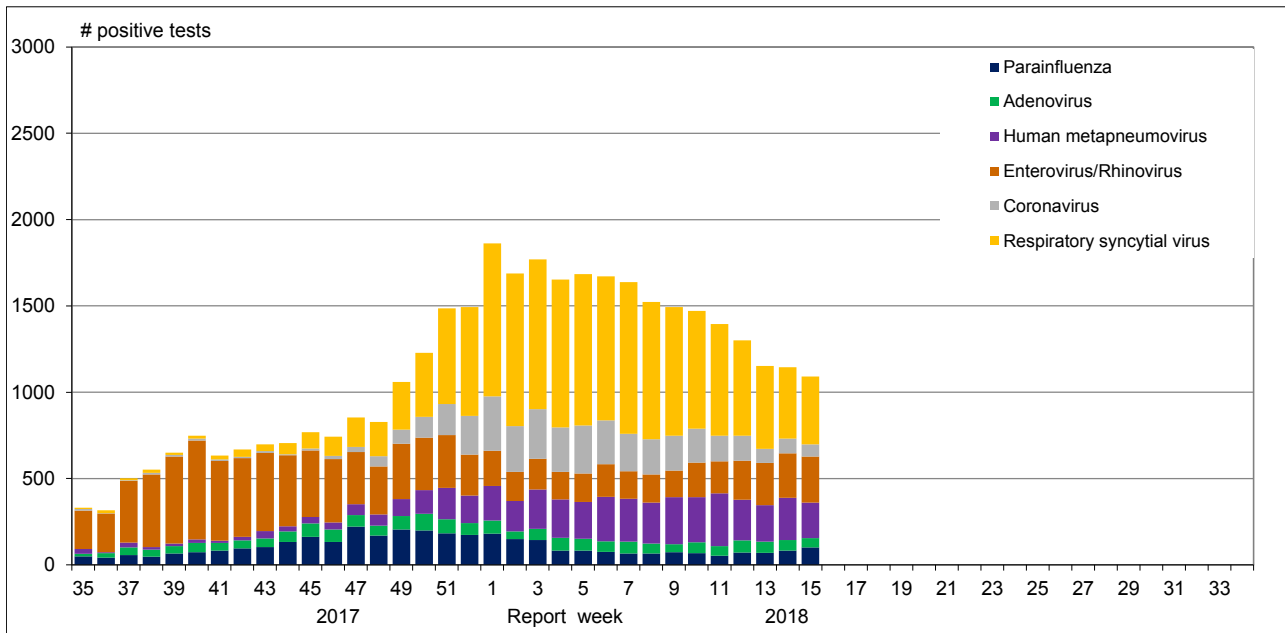


Figure 2: Positive Influenza Tests (%) in Canada by Region by Week of Report

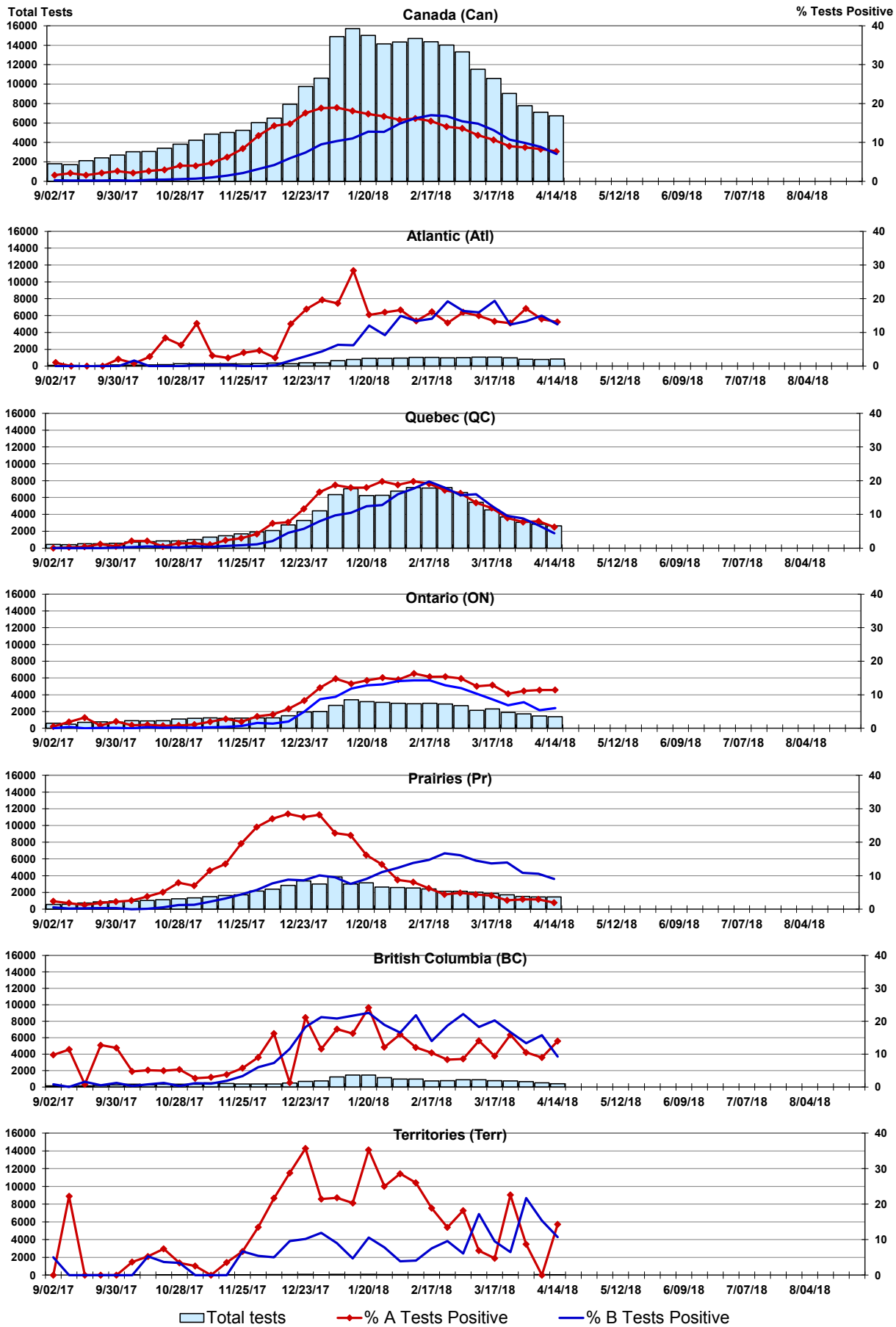


Figure 3: Positive Respiratory syncytial virus (RSV) Tests (%) in Canada by Region by Week of Report

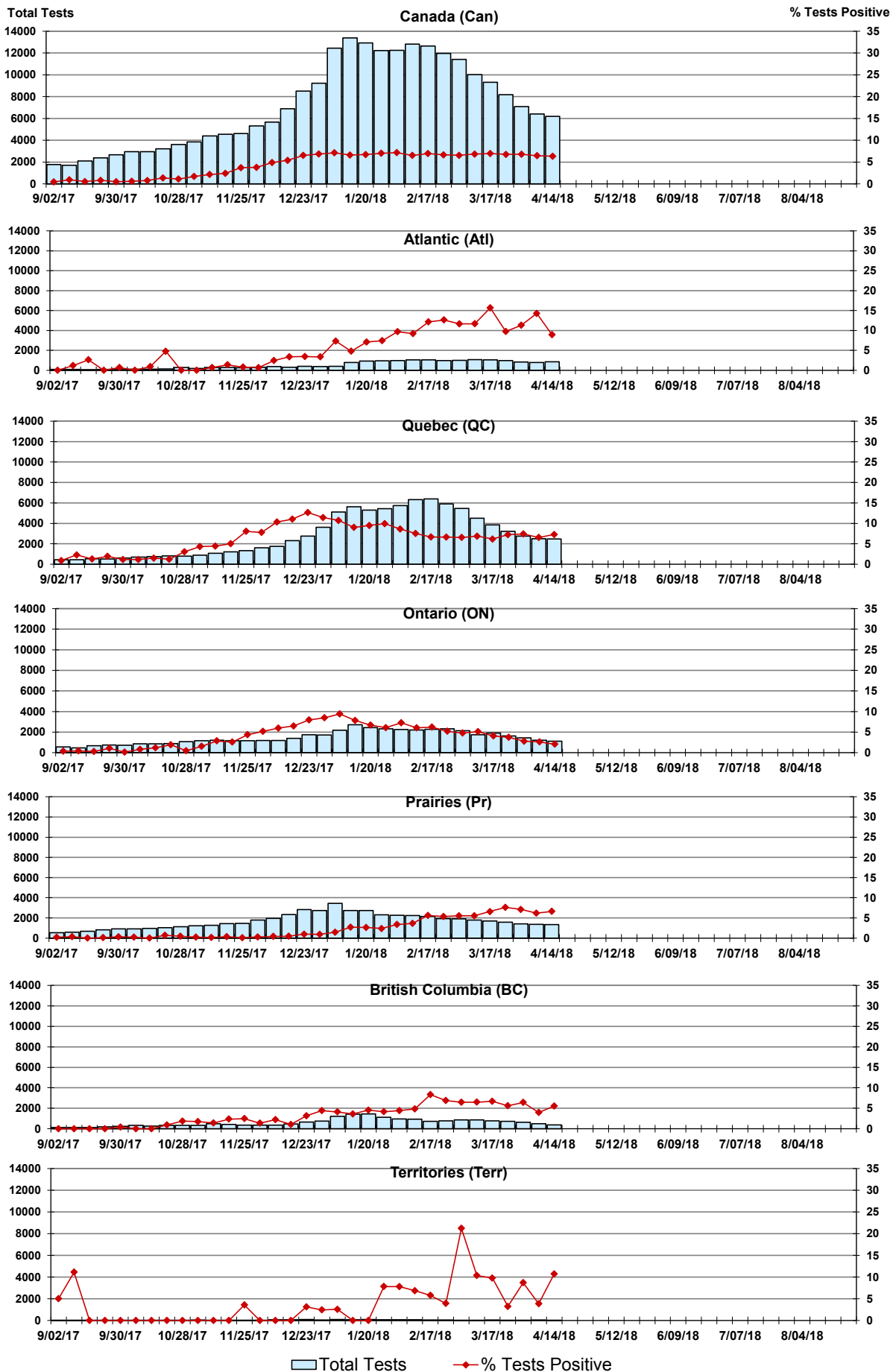


Figure 4: Positive Parainfluenza (PIV) Tests (%) in Canada by Region by Week of Report

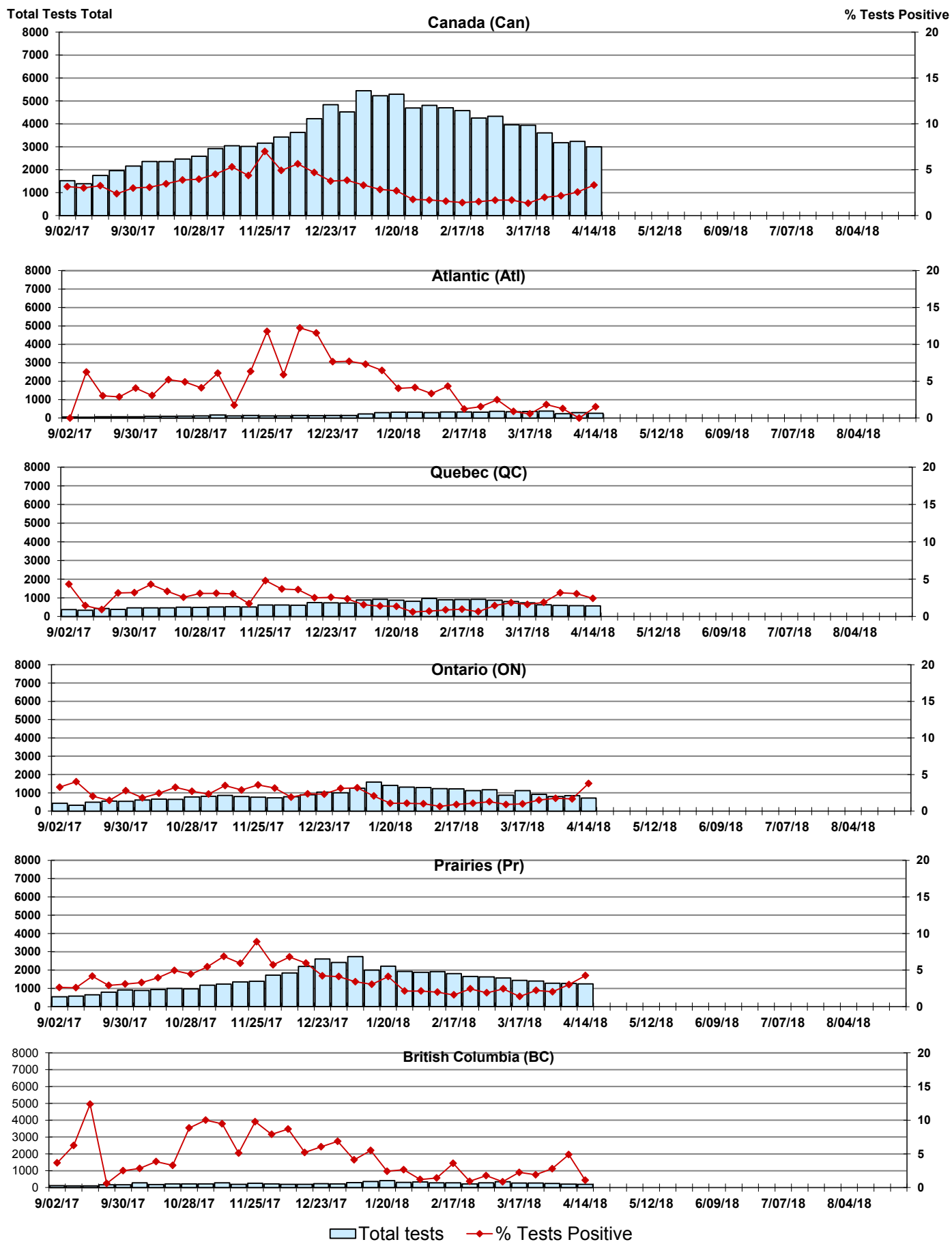


Figure 5: Positive Adenovirus (adeno) Tests (%) in Canada by Region by Week of Report

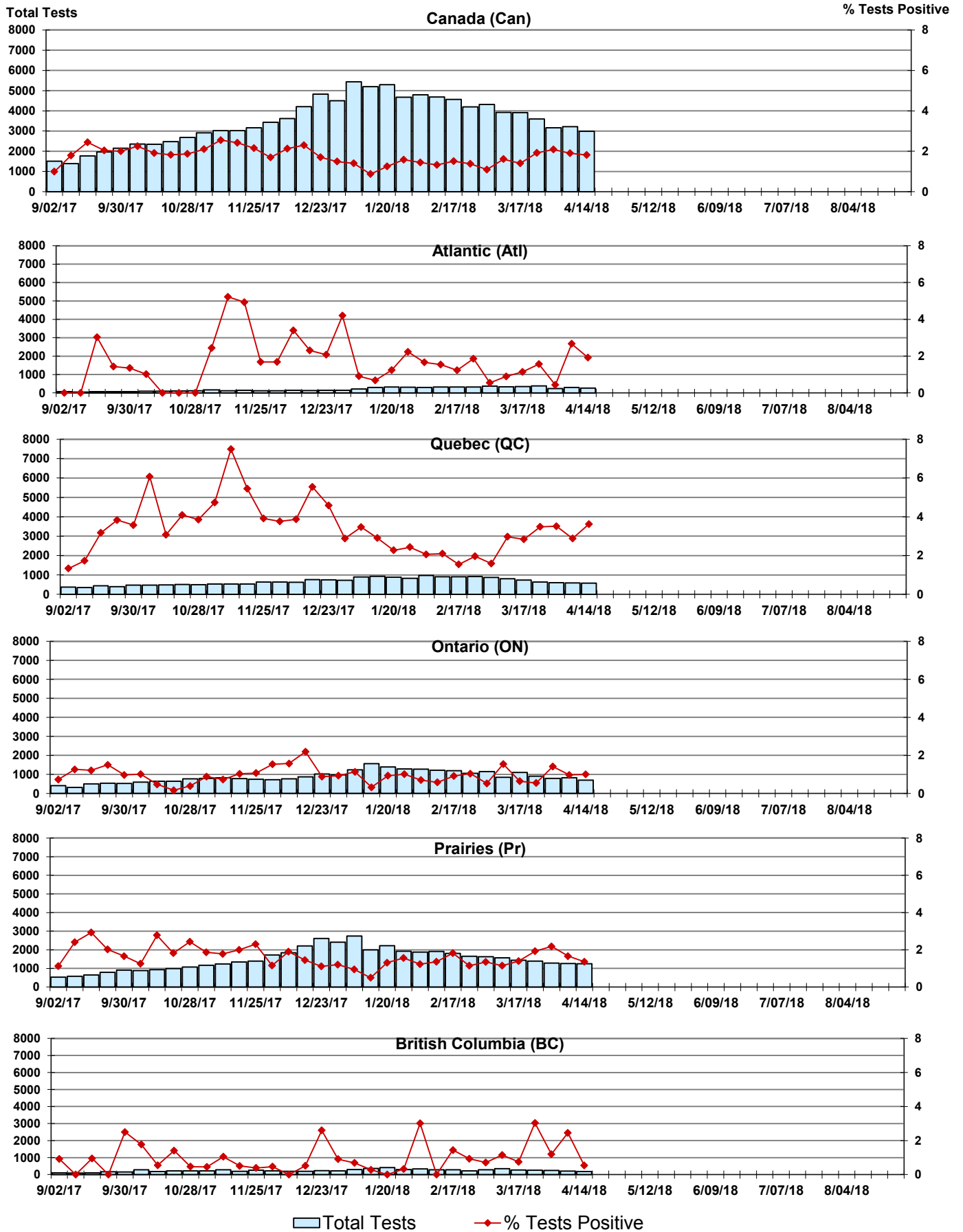


Figure 6: Positive human metapneumovirus (hMPV) Tests (%) in Canada by Region by Week of Report

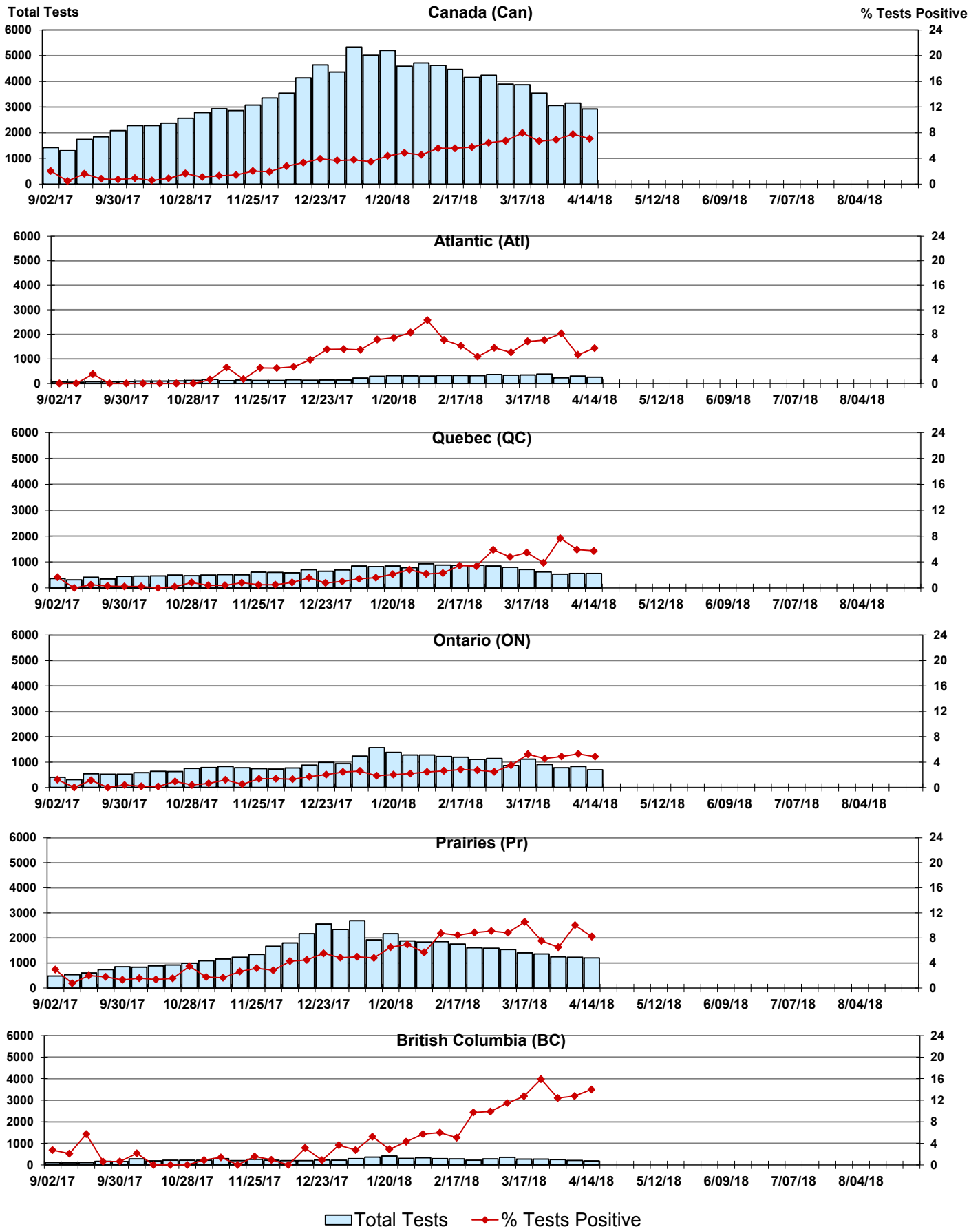


Figure 7: Positive Enterovirus/Rhinovirus (entero/rhino) Tests (%) in Canada by Region by Week of Report

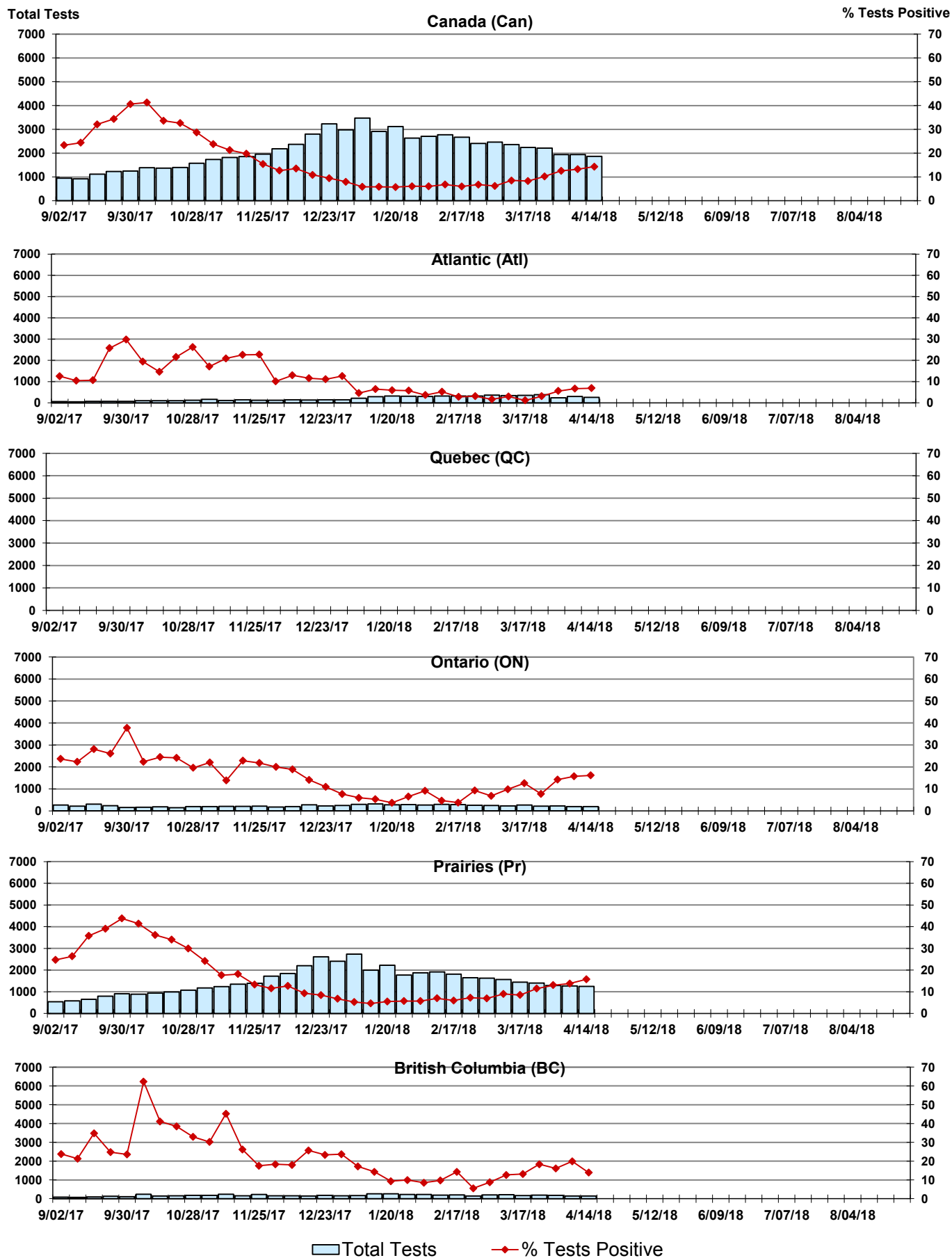
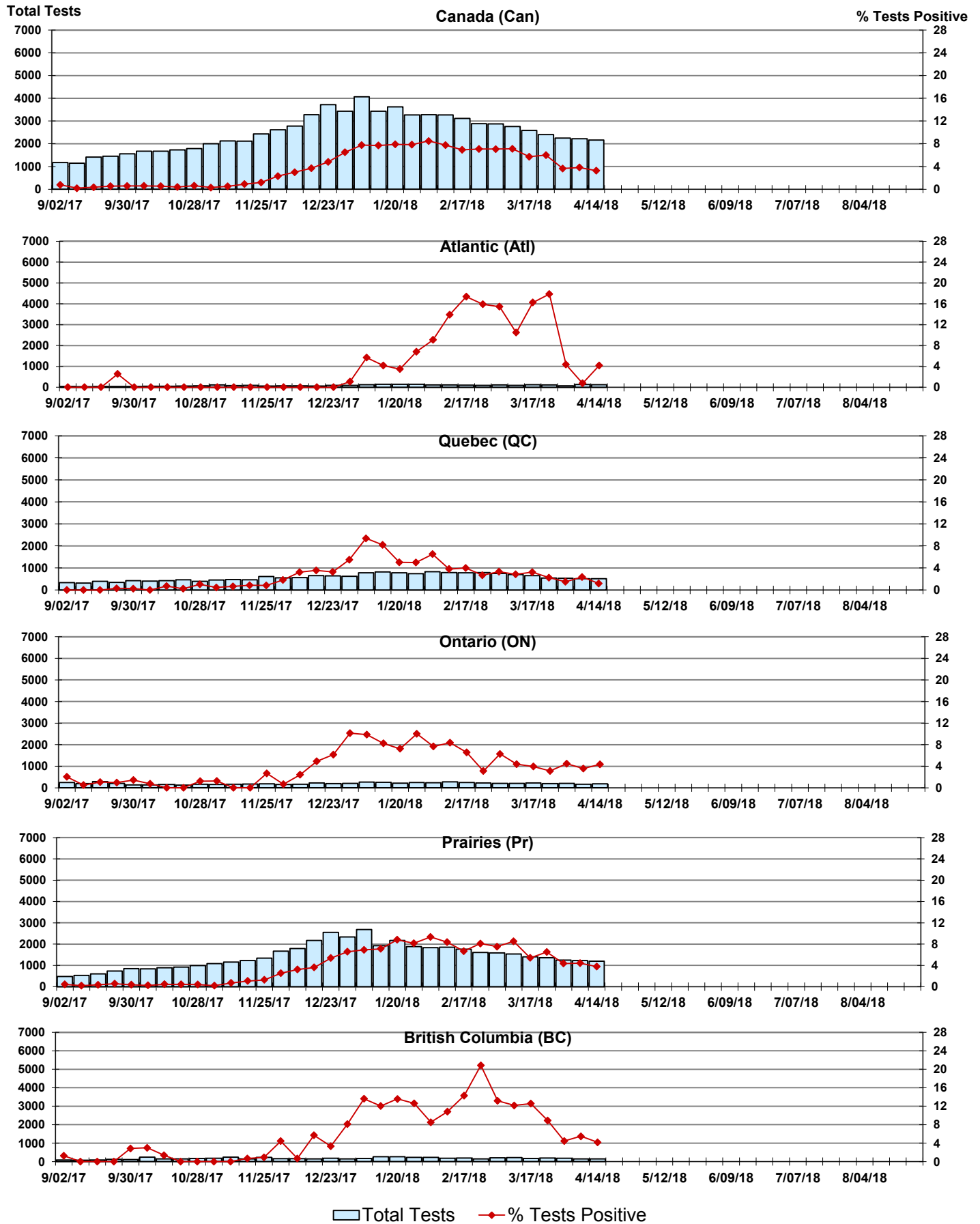


Figure 8: Positive Coronavirus (coron) Tests (%) in Canada by Region by Week of Report



Abbreviations:

A(H1N1)pdm09: Influenza A(H1N1)pdm09

A(H3): Influenza A(H3N2)

A (UnS): Influenza A (Unsubtyped)

Adeno: Adenovirus

CHEO: Children's Hospital of Eastern Ontario

Coron: Coronavirus

Entero: Enterovirus

hMPV: human metapneumovirus

HSC: Health Sciences Centre

N.A.: Not Applicable

P.H.L.: Public Health Laboratory

P.H.O.L.: Public Health Ontario Laboratory

PIV: Parainfluenza

Rhino: Rhinovirus

RSV: Respiratory syncytial virus

UHN: University Health Network

Notes:

Specimens from Yukon (YT), Northwest Territories (NT) and Nunavut (NU) are sent to reference laboratories in other provinces. Results reported for the Territories reflect the number of specimens that are identified as originating from YT, NT or NU.

Delays in the reporting of data may cause data to change retrospectively.

Due to reporting delays, the sum of weekly report totals do not add up to cumulative totals.