

Respiratory Virus Detections in Canada

Respiratory Virus Report, Week 25 - ending June 23, 2018

The Respiratory Virus Detection Surveillance System collects data from select laboratories across Canada on the number of tests performed and the number of tests positive for influenza and other respiratory viruses. Data are reported on a weekly basis year-round to the Centre for Immunization and Respiratory Infectious Diseases (CIRID), Public Health Agency of Canada. These data are also summarized in the weekly FluWatch report.

Table 1: Respiratory Virus Detections/Isolations for the week ending June 23, 2018 (Reporting Week 201825)

Reporting Laboratory	Flu Tested	A(H1N1)pdm09 Positive	A(H3) Positive	A(UnS) Positive	Total Flu A Positive	Total Flu B Positive	RSV Tested	RSV Positive	PIV Tested	PIV 1 Positive	PIV 2 Positive	PIV 3 Positive	PIV 4 Positive	Other PIV Positive	Adeno Tested	Adeno Positive	hMPV Tested	hMPV Positive	Entero/Rhino Tested	Entero/Rhino Positive	Coron Tested	Coron Positive
Newfoundland	37	0	0	0	0	0	37	2	37	0	0	0	0	0	37	0	37	1	37	5	N.A.	N.A.
Prince Edward Island	1	0	0	0	0	0	2	0	1	0	0	0	0	0	1	0	1	0	1	1	1	0
Nova Scotia	29	0	0	0	0	0	29	0	13	0	0	0	0	0	13	1	13	0	13	3	13	1
New Brunswick	98	0	0	0	0	5	98	1	33	0	0	3	0	0	33	2	33	0	33	3	33	0
Atlantic	165	0	0	0	0	5	166	3	84	0	0	3	0	0	84	3	84	1	84	12	47	1
Région Nord-Est	37	0	0	1	1	0	33	1	0	0	0	0	0	0	0	0	0	0	N.A.	N.A.	0	0
Québec-Chaudière-Appalaches	41	0	0	0	0	0	48	0	57	0	0	4	0	0	63	2	54	0	N.A.	N.A.	53	0
Centre-du-Québec	24	0	0	1	1	0	23	0	0	0	0	0	0	0	0	0	0	0	N.A.	N.A.	0	0
Montréal-Laval	471	0	0	2	2	0	475	3	395	1	2	30	0	0	395	18	383	2	N.A.	N.A.	343	0
Ouest du Québec	13	0	0	0	0	0	14	0	0	0	0	0	0	0	0	0	0	0	N.A.	N.A.	0	0
Montérégie	27	0	0	0	0	0	27	0	0	0	0	0	0	0	0	0	0	0	N.A.	N.A.	0	0
Province of Québec	613	0	0	4	4	0	620	4	452	1	2	34	0	0	458	20	437	2	N.A.	N.A.	396	0
Ottawa P.H.L.	5	0	0	0	0	0	5	0	5	0	0	0	0	0	5	0	2	0	3	0	0	0
CHEO - Ottawa	70	0	0	0	0	0	70	2	17	0	0	3	0	0	17	1	17	1	17	4	17	0
Kingston P.H.L.	8	0	0	0	0	0	8	0	8	0	0	0	0	0	8	0	7	0	1	0	0	0
UHN / Mount Sinai Hospital	147	0	0	0	0	0	147	2	17	0	0	1	0	0	0	0	17	0	N.A.	N.A.	N.A.	N.A.
P.H.O.L. - Toronto	167	0	0	0	0	0	165	1	165	1	0	6	0	0	165	2	155	2	12	0	0	0
Sick Kids Hospital - Toronto	0	0	0	0	0	0	0	0	0	0	0	0	0	0	0	0	0	0	0	0	0	0
Sunnybrook & Women's College HSC	38	0	0	0	0	1	38	0	38	0	0	0	0	0	38	0	38	0	38	10	38	1
Sault Ste. Marie P.H.L.	3	0	0	0	0	0	3	0	3	0	0	0	0	0	3	0	3	0	0	0	0	0
Timmins P.H.L.	8	0	0	0	0	0	8	0	8	0	0	2	0	0	8	0	8	0	0	0	0	0
St. Joseph's - London	0	0	0	0	0	0	0	0	0	0	0	0	0	0	0	0	0	0	0	0	0	0
London P.H.L.	26	0	0	0	0	0	24	1	24	0	0	0	0	0	24	0	21	0	3	0	0	0
Orillia P.H.L.	6	0	0	0	0	0	6	0	6	0	0	0	0	0	6	0	5	0	1	0	0	0
Thunder Bay P.H.L.	3	0	0	0	0	0	3	0	3	0	0	0	0	0	3	0	3	0	0	0	0	0
Sudbury P.H.L.	8	0	0	0	0	0	8	0	8	0	0	1	0	0	8	0	8	0	0	0	0	0
Hamilton P.H.L.	31	0	0	0	0	0	31	0	31	0	0	1	0	0	31	0	30	0	1	0	0	0
Peterborough P.H.L.	14	0	0	0	0	0	14	0	14	0	0	1	0	0	14	0	13	0	1	0	0	0
Province of Ontario	534	0	0	0	0	1	530	6	347	1	0	15	0	0	330	3	327	3	77	14	55	1
Manitoba	131	0	0	0	0	1	125	0	103	0	0	7	0	0	103	0	45	0	103	22	45	1
Regina	114	0	0	0	0	0	114	2	114	0	2	9	3	0	114	0	114	0	114	46	114	0
Saskatoon	50	0	0	0	0	0	50	0	50	0	0	4	0	0	50	0	50	1	50	8	50	1
Province of Saskatchewan	164	0	0	0	0	0	164	2	164	0	2	13	3	0	164	0	164	1	164	54	164	1
Province of Alberta	348	1	0	0	1	0	326	0	326	0	4	25	2	0	326	4	326	4	326	90	326	4
Prairies	643	1	0	0	1	1	615	2	593	0	6	45	5	0	593	4	535	5	593	166	535	6
British Columbia	140	0	1	0	1	0	140	3	127	0	0	9	0	0	127	2	127	3	97	27	97	2
Yukon	5	0	0	0	0	0	5	0	N.A.	N.A.	N.A.	N.A.	N.A.	N.A.	N.A.	N.A.	N.A.	N.A.	N.A.	N.A.	N.A.	N.A.
Northwest Territories	5	0	0	0	0	0	5	0	5	0	0	0	0	0	5	1	5	0	5	2	5	0
Nunavut	3	0	0	0	0	0	3	0	3	0	0	0	0	0	3	1	3	0	3	2	3	0
Territories	13	0	0	0	0	0	13	0	8	0	0	0	0	0	8	2	8	0	8	4	8	0
CANADA	2108	1	1	4	6	7	2084	18	1611	2	8	106	5	0	1600	34	1518	14	859	223	1138	10

Specimens from Yukon (YT), Northwest Territories (NT) and Nunavut (NU) are sent to reference laboratories in other provinces and reported results reflect specimens identified as originating from YT, NT or NU. Delays in the reporting of data may cause data to change retrospectively.

Table 2: Respiratory Virus Detections/Isolations for the period August 27, 2017 - June 23, 2018 (Reporting Weeks 201735-201825)

Reporting Laboratory	Flu Tested	A(H1N1)pdm09 Positive	A(H3) Positive	A(UnS) Positive	Total Flu A Positive	Total Flu B Positive	RSV Tested	RSV Positive	PIV Tested	PIV 1 Positive	PIV 2 Positive	PIV 3 Positive	PIV 4 Positive	Other PIV Positive	Adeno Tested	Adeno Positive	hMPV Tested	hMPV Positive	Entero/Rhino Tested	Entero/Rhino Positive	Coron Tested	Coron Positive
Newfoundland	4453	0	3	476	479	436	4453	236	4453	98	20	55	0	0	4453	48	4454	238	4453	246	N.A.	N.A.
Prince Edward Island	1308	8	134	4	146	171	1340	176	84	1	0	0	2	0	84	4	84	5	84	16	84	7
Nova Scotia	4191	0	0	563	563	302	4243	540	576	5	1	7	1	0	576	9	576	34	576	87	576	17
New Brunswick	11818	36	249	1428	1713	1280	11386	775	2911	26	38	43	15	0	2911	79	2911	141	2911	367	2911	154
Atlantic	21770	44	386	2471	2901	2189	21422	1727	8024	130	59	105	18	0	8024	140	8025	418	8024	716	3571	178
Région Nord-Est	13806	0	0	1846	1846	1404	11885	872	0	0	0	0	0	0	0	0	0	0	N.A.	N.A.	0	0
Québec-Chaudière-Appalaches	16526	0	0	2622	2622	2076	16289	1351	3412	44	2	37	19	0	3494	118	2936	35	N.A.	N.A.	2857	25
Centre-du-Québec	19730	0	0	2813	2813	2657	15697	1415	0	0	0	0	0	0	0	0	0	0	N.A.	N.A.	0	0
Montréal-Laval	48641	0	0	5081	5081	3813	43348	2654	22768	211	38	344	55	0	22940	792	21995	640	N.A.	N.A.	20206	603
Ouest du Québec	13190	0	0	1886	1886	1535	8689	753	0	0	0	0	0	0	0	0	0	0	N.A.	N.A.	0	0
Montérégie	9322	0	0	1262	1262	865	9180	637	0	0	0	0	0	0	0	0	0	0	N.A.	N.A.	0	0
Province of Québec	121215	0	0	15510	15510	12350	105088	7682	26180	255	40	381	74	0	26434	910	24931	675	N.A.	N.A.	23063	628
Ottawa P.H.L.	967	4	122	57	183	143	541	12	541	6	1	3	0	0	541	4	515	15	45	6	10	1
CHEO - Ottawa	8768	0	0	795	795	567	8768	710	904	13	1	23	9	0	931	31	992	24	934	208	934	48
Kingston P.H.L.	1097	4	103	38	145	93	816	27	816	9	0	5	1	0	816	5	753	17	146	7	22	0
UHN / Mount Sinai Hospital	12402	0	2	627	629	566	12402	409	757	7	2	20	8	0	0	0	716	15	N.A.	N.A.	N.A.	N.A.
P.H.O.L. - Toronto	16805	174	1575	138	1887	1170	13217	270	13218	112	13	133	1	0	13217	123	12801	215	862	48	234	5
Sick Kids Hospital - Toronto	3227	20	59	122	201	177	2579	201	2579	30	8	58	33	0	2579	58	2579	153	2579	622	2579	139
Sunnybrook & Women's College HSC	3163	14	209	3	226	177	3163	75	3163	22	9	25	10	0	3163	1	3163	100	3163	256	3163	101
Sault Ste. Marie P.H.L.	636	1	98	8	107	52	471	11	471	9	0	1	1	0	471	0	458	3	26	3	12	0
Timmins P.H.L.	489	7	84	8	99	36	354	23	354	1	0	3	0	0	354	2	346	2	22	1	2	0
St. Joseph's - London	4551	0	0	416	416	417	4551	373	1414	24	4	12	11	0	1286	33	1231	56	716	150	666	21
London P.H.L.	4895	28	456	112	596	645	3346	193	3346	40	3	38	3	0	3346	17	3245	74	284	21	63	0
Orillia P.H.L.	1561	8	153	65	226	134	1130	53	1130	19	0	5	0	0	1130	10	1110	31	49	4	11	0
Thunder Bay P.H.L.	1164	2	196	22	220	94	834	27	834	12	2	6	0	0	834	6	823	17	15	0	3	0
Sudbury P.H.L.	1222	3	118	7	128	95	988	11	988	11	2	2	0	0	987	7	946	3	61	1	13	0
Hamilton P.H.L.	3572	29	206	97	332	343	2697	132	2696	33	5	27	3	0	2696	30	2616	52	204	21	64	2
Peterborough P.H.L.	1860	6	99	52	157	126	1511	44	1511	21	0	5	0	0	1511	7	1502	34	57	12	44	2
Province of Ontario	66379	300	3480	2567	6347	4835	57368	2571	34722	369	50	366	80	0	33862	334	33796	811	9208	1371	7857	321
Manitoba	11958	22	378	737	1137	639	11706	577	4931	67	15	43	12	0	4931	67	2592	150	4931	519	2592	97
Regina	14040	70	1163	61	1294	1335	14040	860	14040	375	162	140	62	0	14040	237	14040	743	14040	2524	14040	832
Saskatoon	5833	19	0	391	410	348	5833	255	5732	34	6	35	4	0	5833	49	5833	78	5683	470	5833	99
Province of Saskatchewan	19873	89	1163	452	1704	1683	19873	1115	19772	409	168	175	66	0	19873	286	19873	821	19723	2994	19873	931
Province of Alberta	39807	278	3996	1425	5699	3394	32404	0	32404	549	210	446	309	0	32404	550	32404	1989	32404	4775	32404	1444
Prairies	71638	389	5537	2614	8540	5716	63983	1692	57107	1025	393	664	387	0	57208	903	54869	2960	57058	8288	54869	2472
British Columbia	21904	518	1520	446	2484	3021	21723	887	9151	165	55	103	83	0	9151	109	9151	486	6658	1484	6658	401
Yukon	453	7	48	21	76	43	453	46	N.A.	N.A.	N.A.	N.A.	N.A.	N.A.	N.A.	N.A.	N.A.	N.A.	N.A.	N.A.	N.A.	N.A.
Northwest Territories	753	4	126	0	130	56	747	0	747	11	2	2	24	0	747	26	747	52	747	94	747	52
Nunavut	407	6	40	0	46	6	394	8	395	7	4	13	7	0	394	25	392	26	220	63	211	14
Territories	1613	17	214	21	252	105	1594	54	1142	18	6	15	31	0	1141	51	1139	78	967	157	958	66
CANADA	304519	1268	11137	23629	36034	28216	271178	14613	136326	1962	603	1634	673	0	135820	2447	131911	5428	81915	12016	96976	4066

Specimens from YT, NT and NU are sent to reference laboratories in other provinces and reported results reflect specimens identified as originating from YT, NT or NU.

Delays in the reporting of data may cause data to change retrospectively.

Due to reporting delays, the sum of weekly report totals do not add up to cumulative totals.

Figure 1: Number positive laboratory tests for other respiratory viruses by report week, Canada, 2017-18

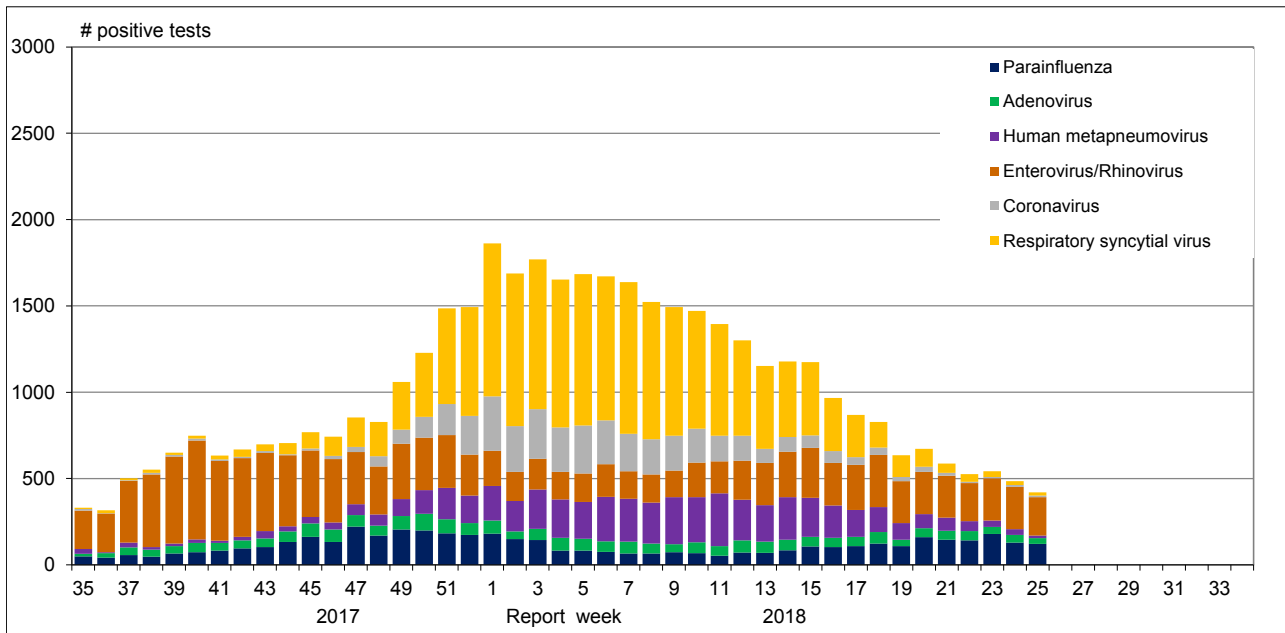


Figure 2: Positive Influenza Tests (%) in Canada by Region by Week of Report

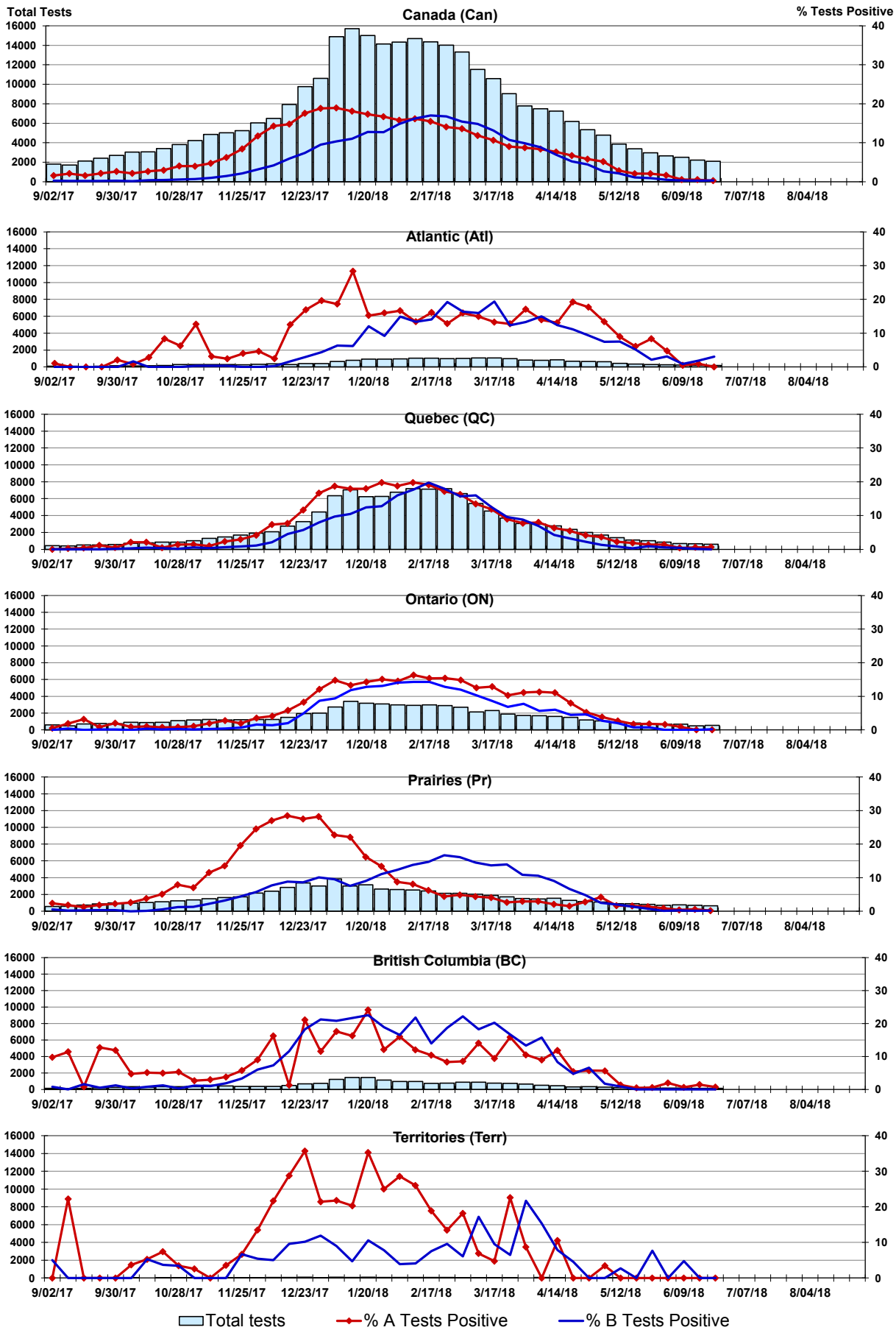


Figure 3: Positive Respiratory syncytial virus (RSV) Tests (%) in Canada by Region by Week of Report

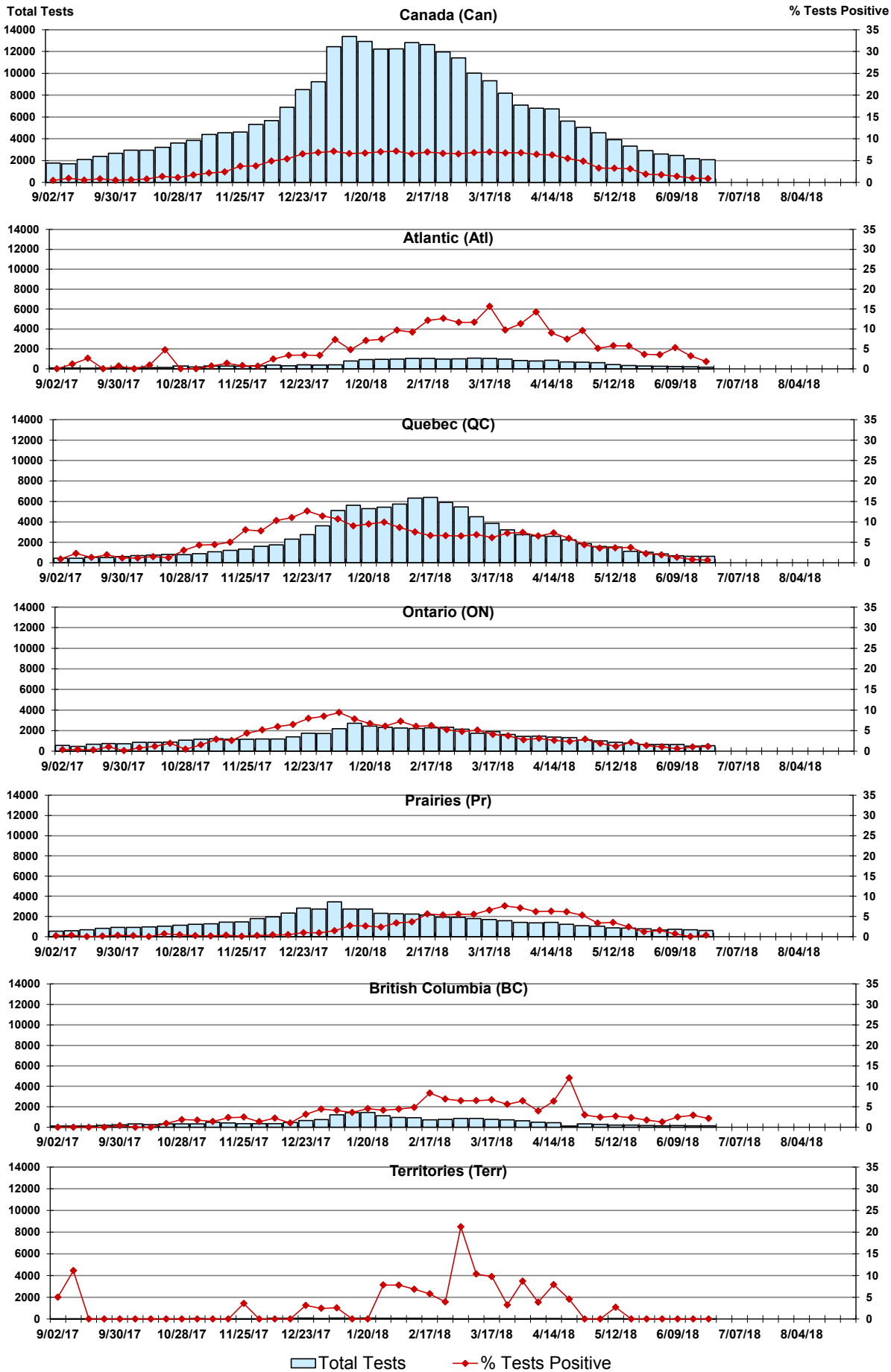


Figure 4: Positive Parainfluenza (PIV) Tests (%) in Canada by Region by Week of Report

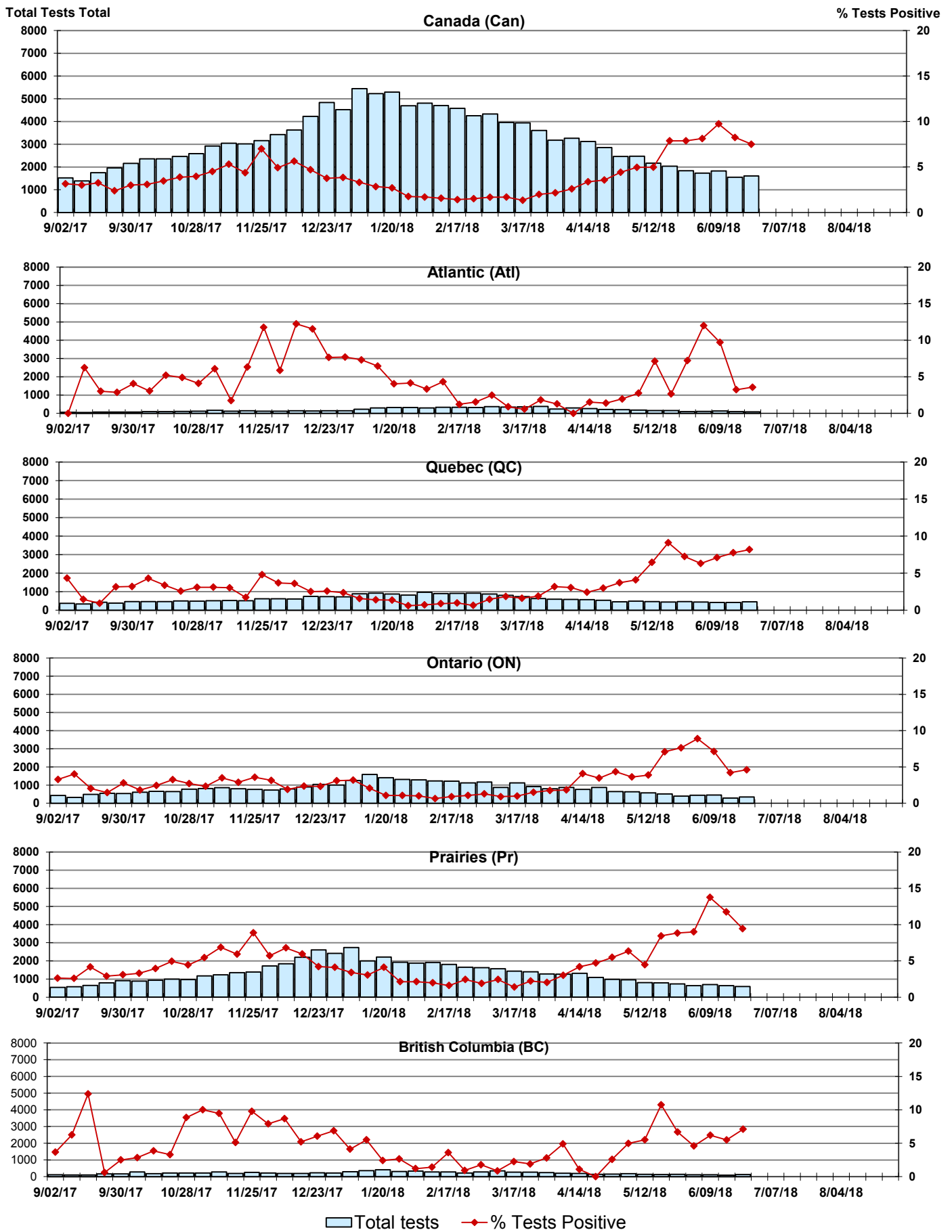


Figure 5: Positive Adenovirus (adeno) Tests (%) in Canada by Region by Week of Report

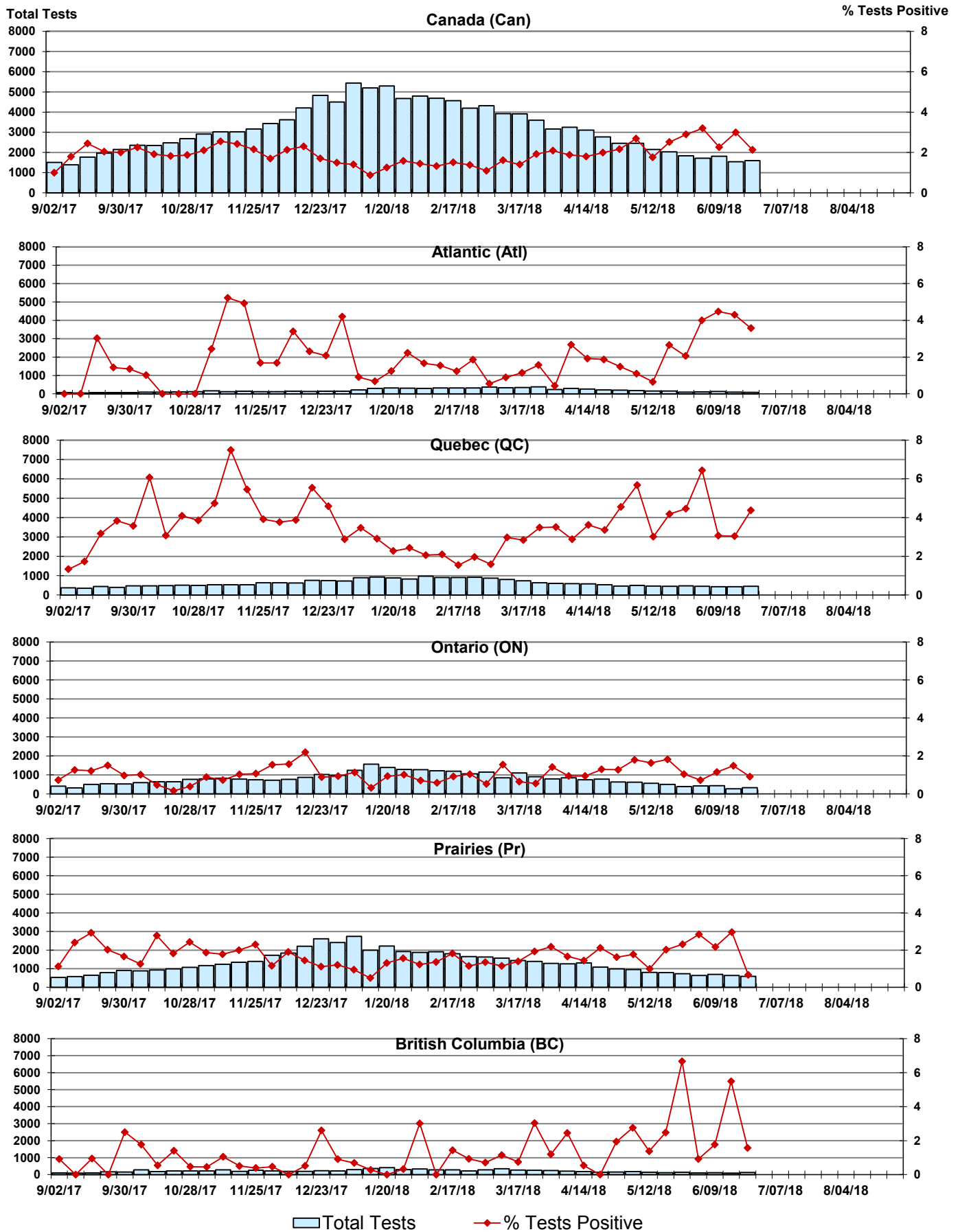


Figure 6: Positive human metapneumovirus (hMPV) Tests (%) in Canada by Region by Week of Report

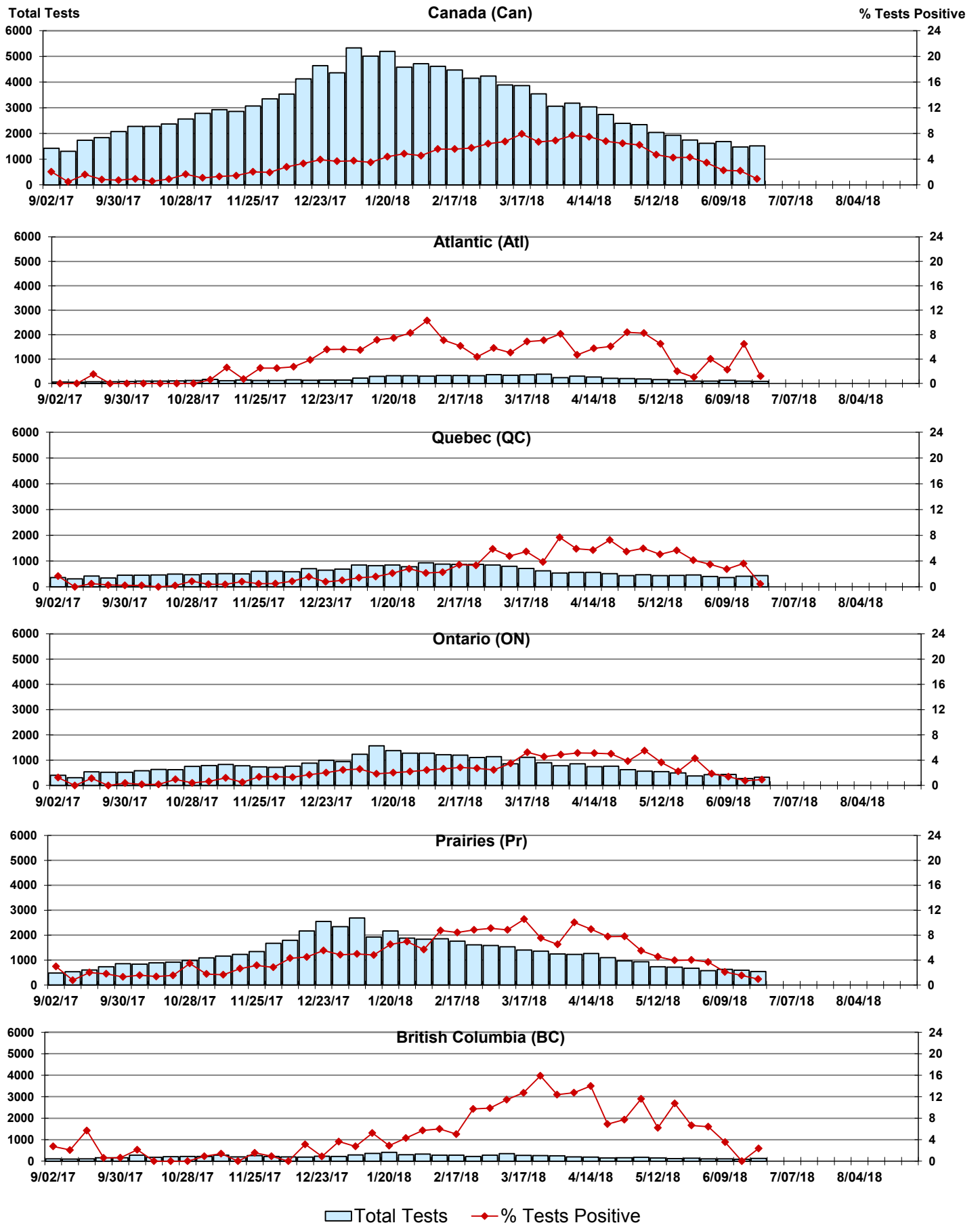


Figure 7: Positive Enterovirus/Rhinovirus (entero/rhino) Tests (%) in Canada by Region by Week of Report

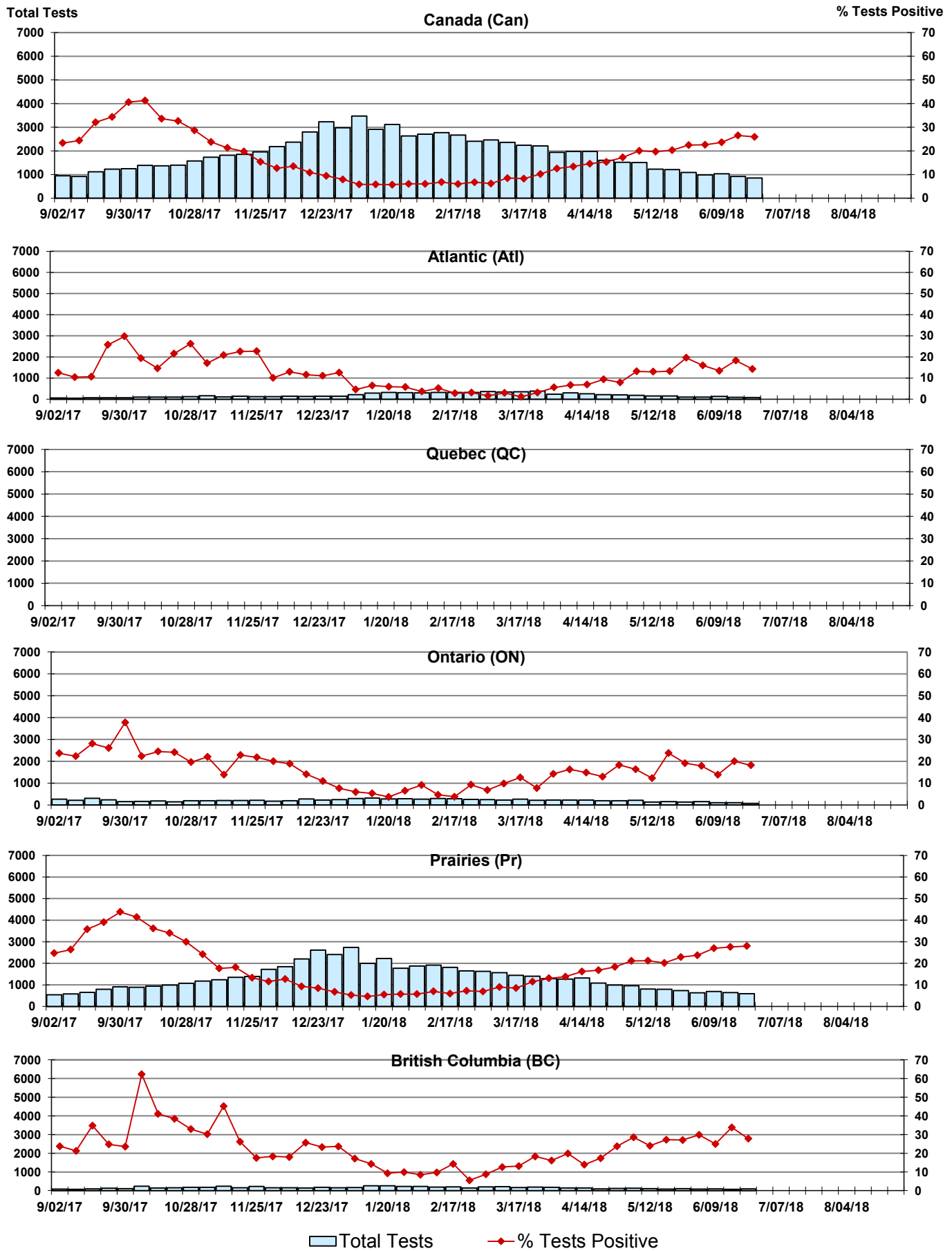
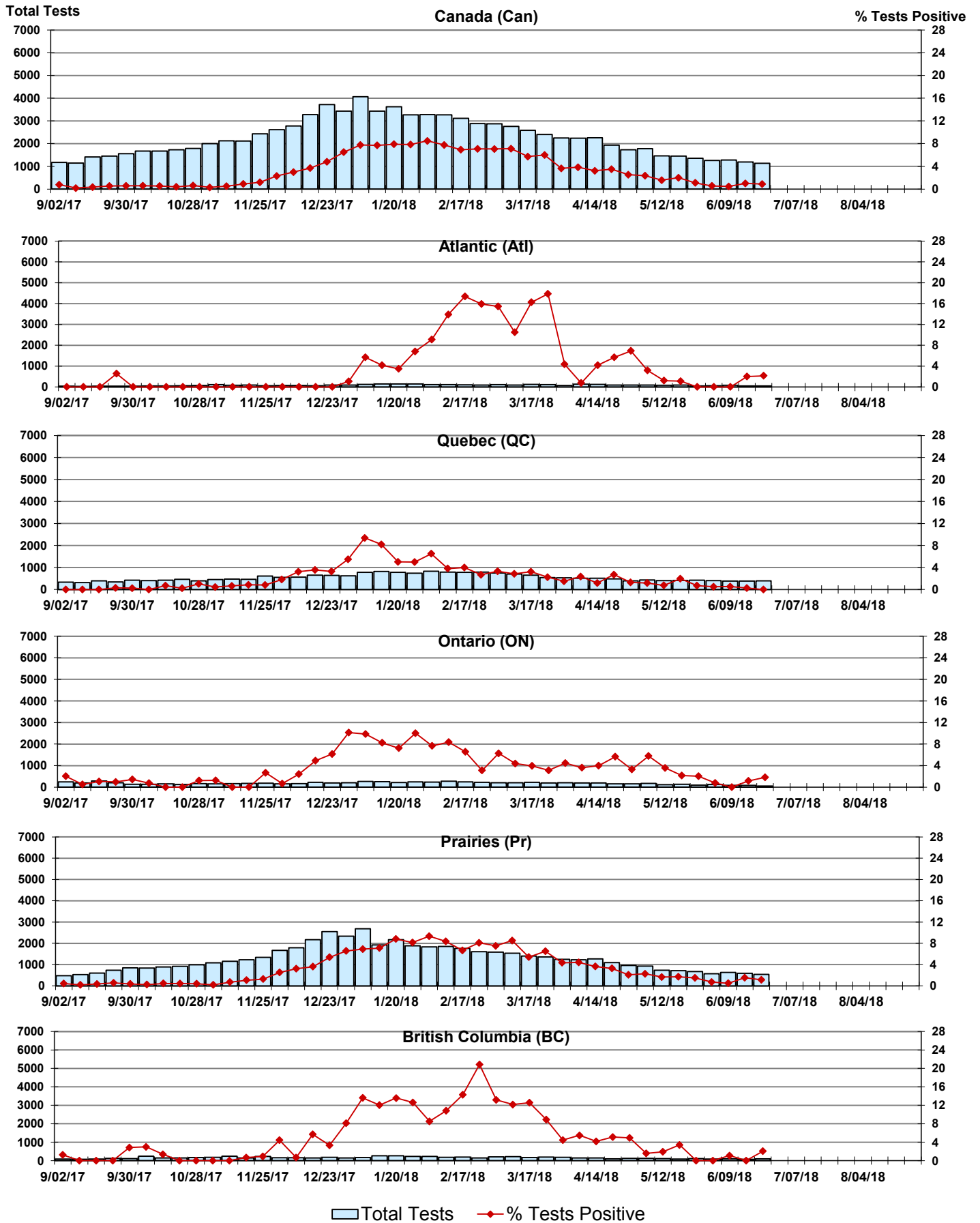


Figure 8: Positive Coronavirus (coron) Tests (%) in Canada by Region by Week of Report



Abbreviations:

A(H1N1)pdm09: Influenza A(H1N1)pdm09

A(H3): Influenza A(H3N2)

A (UnS): Influenza A (Unsubtyped)

Adeno: Adenovirus

CHEO: Children's Hospital of Eastern Ontario

Coron: Coronavirus

Entero: Enterovirus

hMPV: human metapneumovirus

HSC: Health Sciences Centre

N.A.: Not Applicable

P.H.L.: Public Health Laboratory

P.H.O.L.: Public Health Ontario Laboratory

PIV: Parainfluenza

Rhino: Rhinovirus

RSV: Respiratory syncytial virus

UHN: University Health Network

Notes:

Specimens from Yukon (YT), Northwest Territories (NT) and Nunavut (NU) are sent to reference laboratories in other provinces. Results reported for the Territories reflect the number of specimens that are identified as originating from YT, NT or NU.

Delays in the reporting of data may cause data to change retrospectively.

Due to reporting delays, the sum of weekly report totals do not add up to cumulative totals.