

# Respiratory Virus Detections in Canada

## Respiratory Virus Report, Week 26 - ending June 30, 2018

The Respiratory Virus Detection Surveillance System collects data from select laboratories across Canada on the number of tests performed and the number of tests positive for influenza and other respiratory viruses. Data are reported on a weekly basis year-round to the Centre for Immunization and Respiratory Infectious Diseases (CIRID), Public Health Agency of Canada. These data are also summarized in the weekly FluWatch report.

**Table 1: Respiratory Virus Detections/Isolations for the week ending June 30, 2018 (Reporting Week 201826)**

Reporting Laboratory	Flu Tested	A(H1N1)pdm09 Positive	A(H3) Positive	A(UnS) Positive	Total Flu A Positive	Total Flu B Positive	RSV Tested	RSV Positive	PIV Tested	PIV 1 Positive	PIV 2 Positive	PIV 3 Positive	PIV 4 Positive	Other PIV Positive	Adeno Tested	Adeno Positive	hMPV Tested	hMPV Positive	Entero/Rhino Tested	Entero/Rhino Positive	Coron Tested	Coron Positive
Newfoundland	28	0	0	0	0	0	28	2	28	0	0	1	0	0	28	0	28	1	28	7	N.A.	N.A.
Prince Edward Island	3	0	0	0	0	0	3	0	3	0	0	0	0	0	3	0	3	0	3	2	3	0
Nova Scotia	17	0	0	0	0	0	17	0	10	0	0	0	0	0	10	0	10	1	10	3	10	0
New Brunswick	89	0	0	0	0	2	89	2	32	0	2	5	0	0	32	1	32	1	32	11	32	0
<b>Atlantic</b>	<b>137</b>	<b>0</b>	<b>0</b>	<b>0</b>	<b>0</b>	<b>2</b>	<b>137</b>	<b>4</b>	<b>73</b>	<b>0</b>	<b>2</b>	<b>6</b>	<b>0</b>	<b>0</b>	<b>73</b>	<b>1</b>	<b>73</b>	<b>3</b>	<b>73</b>	<b>23</b>	<b>45</b>	<b>0</b>
Région Nord-Est	27	0	0	0	0	0	24	0	0	0	0	0	0	0	0	0	0	0	N.A.	N.A.	0	0
Québec-Chaudière-Appalaches	37	0	0	0	0	0	55	0	50	0	0	2	0	0	51	2	48	1	N.A.	N.A.	48	1
Centre-du-Québec	9	0	0	0	0	0	9	0	0	0	0	0	0	0	0	0	0	0	N.A.	N.A.	0	0
Montréal-Laval	335	0	0	0	0	1	349	1	282	2	1	17	0	0	282	9	276	1	N.A.	N.A.	247	1
Ouest du Québec	15	0	0	0	0	0	13	0	0	0	0	0	0	0	0	0	0	0	N.A.	N.A.	0	0
Montérégie	24	0	0	0	0	0	24	0	0	0	0	0	0	0	0	0	0	0	N.A.	N.A.	0	0
<b>Province of Québec</b>	<b>447</b>	<b>0</b>	<b>0</b>	<b>0</b>	<b>0</b>	<b>1</b>	<b>474</b>	<b>1</b>	<b>332</b>	<b>2</b>	<b>1</b>	<b>19</b>	<b>0</b>	<b>0</b>	<b>333</b>	<b>11</b>	<b>324</b>	<b>2</b>	<b>N.A.</b>	<b>N.A.</b>	<b>295</b>	<b>2</b>
Ottawa P.H.L.	12	0	0	0	0	0	8	0	8	0	0	0	0	0	8	0	8	0	0	0	0	0
CHEO - Ottawa	80	0	0	0	0	0	80	1	22	0	0	5	0	0	22	0	22	0	22	9	22	0
Kingston P.H.L.	11	0	0	0	0	0	7	0	7	0	0	1	0	0	7	0	7	0	0	0	0	0
UHN / Mount Sinai Hospital	0	0	0	0	0	0	0	0	0	0	0	0	0	0	0	0	0	0	N.A.	N.A.	N.A.	N.A.
P.H.O.L. - Toronto	147	0	0	0	0	0	145	0	145	0	0	7	0	0	145	0	134	2	14	0	0	0
Sick Kids Hospital - Toronto	38	0	0	0	0	0	38	1	38	0	0	4	0	0	38	1	38	2	38	15	38	0
Sunnybrook & Women's College HSC	37	0	0	0	0	0	37	0	37	0	0	3	0	0	37	0	37	0	37	12	37	1
Sault Ste. Marie P.H.L.	2	0	0	0	0	0	2	0	2	0	0	0	0	0	2	0	2	0	0	0	0	0
Timmins P.H.L.	1	0	0	0	0	0	1	0	1	0	0	0	0	0	1	0	1	0	0	0	0	0
St. Joseph's - London	0	0	0	0	0	0	0	0	0	0	0	0	0	0	0	0	0	0	0	0	0	0
London P.H.L.	24	0	0	0	0	0	24	0	24	0	0	0	0	0	24	0	22	0	2	0	0	0
Orillia P.H.L.	21	0	0	0	0	0	15	0	15	0	0	0	0	0	15	0	15	0	0	0	0	0
Thunder Bay P.H.L.	2	0	0	0	0	0	2	0	2	0	0	0	0	0	2	0	2	0	0	0	0	0
Sudbury P.H.L.	10	0	0	0	0	0	10	0	10	0	0	0	0	0	10	0	7	0	3	0	0	0
Hamilton P.H.L.	17	0	0	0	0	0	17	0	17	0	0	3	0	0	17	0	17	0	0	0	0	0
Peterborough P.H.L.	14	0	0	0	0	0	12	0	12	0	0	0	0	0	12	0	11	0	1	0	0	0
<b>Province of Ontario</b>	<b>416</b>	<b>0</b>	<b>0</b>	<b>0</b>	<b>0</b>	<b>0</b>	<b>398</b>	<b>2</b>	<b>340</b>	<b>0</b>	<b>0</b>	<b>23</b>	<b>0</b>	<b>0</b>	<b>340</b>	<b>1</b>	<b>323</b>	<b>4</b>	<b>117</b>	<b>36</b>	<b>97</b>	<b>1</b>
Manitoba	82	0	0	0	0	1	82	2	67	0	0	5	1	0	67	1	29	1	67	9	29	0
Regina	125	0	0	0	0	0	125	5	125	0	1	4	2	0	125	4	125	1	125	62	125	0
Saskatoon	54	0	0	0	0	0	54	0	54	0	0	1	0	0	54	0	54	0	54	7	54	0
Province of Saskatchewan	179	0	0	0	0	0	179	5	179	0	1	5	2	0	179	4	179	1	179	69	179	0
Province of Alberta	376	1	8	0	9	2	350	0	350	0	3	28	4	0	350	8	350	6	350	108	350	1
<b>Prairies</b>	<b>637</b>	<b>1</b>	<b>8</b>	<b>0</b>	<b>9</b>	<b>3</b>	<b>611</b>	<b>7</b>	<b>596</b>	<b>0</b>	<b>4</b>	<b>38</b>	<b>7</b>	<b>0</b>	<b>596</b>	<b>13</b>	<b>558</b>	<b>8</b>	<b>596</b>	<b>186</b>	<b>558</b>	<b>1</b>
<b>British Columbia</b>	<b>72</b>	<b>0</b>	<b>0</b>	<b>0</b>	<b>0</b>	<b>0</b>	<b>72</b>	<b>1</b>	<b>118</b>	<b>0</b>	<b>0</b>	<b>6</b>	<b>0</b>	<b>0</b>	<b>118</b>	<b>3</b>	<b>118</b>	<b>4</b>	<b>92</b>	<b>22</b>	<b>92</b>	<b>1</b>
Yukon	1	0	0	0	0	0	1	0	N.A.	N.A.	N.A.	N.A.	N.A.	N.A.	N.A.	N.A.	N.A.	N.A.	N.A.	N.A.	N.A.	N.A.
Northwest Territories	4	0	0	0	0	0	4	0	4	0	0	0	0	0	4	1	4	0	4	2	4	0
Nunavut	8	0	0	0	0	0	8	0	8	0	0	0	0	0	8	3	8	0	8	2	8	0
<b>Territories</b>	<b>13</b>	<b>0</b>	<b>0</b>	<b>0</b>	<b>0</b>	<b>0</b>	<b>13</b>	<b>0</b>	<b>12</b>	<b>0</b>	<b>0</b>	<b>0</b>	<b>0</b>	<b>0</b>	<b>12</b>	<b>4</b>	<b>12</b>	<b>0</b>	<b>12</b>	<b>4</b>	<b>12</b>	<b>0</b>
<b>CANADA</b>	<b>1722</b>	<b>1</b>	<b>8</b>	<b>0</b>	<b>9</b>	<b>6</b>	<b>1705</b>	<b>15</b>	<b>1471</b>	<b>2</b>	<b>7</b>	<b>92</b>	<b>7</b>	<b>0</b>	<b>1472</b>	<b>33</b>	<b>1408</b>	<b>21</b>	<b>890</b>	<b>271</b>	<b>1099</b>	<b>5</b>

Specimens from Yukon (YT), Northwest Territories (NT) and Nunavut (NU) are sent to reference laboratories in other provinces and reported results reflect specimens identified as originating from YT, NT or NU. Delays in the reporting of data may cause data to change retrospectively.

**Table 2: Respiratory Virus Detections/Isolations for the period August 27, 2017 - June 30, 2018 (Reporting Weeks 201735-201826)**

Reporting Laboratory	Flu Tested	A(H1N1)pdm09 Positive	A(H3) Positive	A(UnS) Positive	Total Flu A Positive	Total Flu B Positive	RSV Tested	RSV Positive	PIV Tested	PIV 1 Positive	PIV 2 Positive	PIV 3 Positive	PIV 4 Positive	Other PIV Positive	Adeno Tested	Adeno Positive	hMPV Tested	hMPV Positive	Entero/Rhino Tested	Entero/Rhino Positive	Coron Tested	Coron Positive
Newfoundland	4481	0	3	476	479	436	4481	238	4481	98	20	56	0	0	4481	48	4482	239	4481	253	N.A.	N.A.
Prince Edward Island	1311	8	134	4	146	171	1343	176	87	1	0	0	2	0	87	4	87	5	87	18	87	7
Nova Scotia	4208	0	0	563	563	302	4260	540	586	5	1	7	1	0	586	9	586	35	586	90	586	17
New Brunswick	11907	36	249	1428	1713	1282	11475	777	2943	26	40	48	15	0	2943	80	2943	142	2943	378	2943	154
<b>Atlantic</b>	<b>21907</b>	<b>44</b>	<b>386</b>	<b>2471</b>	<b>2901</b>	<b>2191</b>	<b>21559</b>	<b>1731</b>	<b>8097</b>	<b>130</b>	<b>61</b>	<b>111</b>	<b>18</b>	<b>0</b>	<b>8097</b>	<b>141</b>	<b>8098</b>	<b>421</b>	<b>8097</b>	<b>739</b>	<b>3616</b>	<b>178</b>
Région Nord-Est	13835	0	0	1846	1846	1404	11911	872	0	0	0	0	0	0	0	0	0	0	N.A.	N.A.	0	0
Québec-Chaudière-Appalaches	16563	0	0	2622	2622	2076	16344	1351	3462	44	2	39	19	0	3545	120	2984	36	N.A.	N.A.	2905	26
Centre-du-Québec	19739	0	0	2813	2813	2657	15706	1415	0	0	0	0	0	0	0	0	0	0	N.A.	N.A.	0	0
Montréal-Laval	48976	0	0	5081	5081	3814	43697	2655	23050	213	39	361	55	0	23222	801	22271	641	N.A.	N.A.	20453	604
Ouest du Québec	13205	0	0	1886	1886	1535	8702	753	0	0	0	0	0	0	0	0	0	0	N.A.	N.A.	0	0
Montérégie	9346	0	0	1262	1262	865	9204	637	0	0	0	0	0	0	0	0	0	0	N.A.	N.A.	0	0
<b>Province of Québec</b>	<b>121664</b>	<b>0</b>	<b>0</b>	<b>15510</b>	<b>15510</b>	<b>12351</b>	<b>105564</b>	<b>7683</b>	<b>26512</b>	<b>257</b>	<b>41</b>	<b>400</b>	<b>74</b>	<b>0</b>	<b>26767</b>	<b>921</b>	<b>25255</b>	<b>677</b>	<b>N.A.</b>	<b>N.A.</b>	<b>23358</b>	<b>630</b>
Ottawa P.H.L.	979	4	122	57	183	143	549	12	549	6	1	3	0	0	549	4	523	15	45	6	10	1
CHEO - Ottawa	8848	0	0	795	795	567	8848	711	926	13	1	28	9	0	953	31	1014	24	956	217	956	48
Kingston P.H.L.	1108	4	103	38	145	93	823	27	823	9	0	6	1	0	823	5	760	17	148	7	22	0
UHN / Mount Sinai Hospital	12402	0	2	627	629	566	12402	409	757	7	2	20	8	0	0	0	716	15	N.A.	N.A.	N.A.	N.A.
P.H.O.L. - Toronto	16953	174	1575	138	1887	1170	13363	270	13364	112	13	140	1	0	13363	123	12935	217	878	48	234	5
Sick Kids Hospital - Toronto	3306	20	59	122	201	177	2658	202	2658	30	9	63	33	0	2658	59	2658	157	2658	652	2658	140
Sunnybrook & Women's College HSC	3200	14	209	3	226	177	3200	75	3200	22	9	28	10	0	3200	1	3200	100	3200	268	3200	102
Sault Ste. Marie P.H.L.	638	1	98	8	107	52	473	11	473	9	0	1	1	0	473	0	460	3	26	3	12	0
Timmins P.H.L.	490	7	84	8	99	36	355	23	355	1	0	3	0	0	355	2	347	2	22	1	2	0
St. Joseph's - London	4551	0	0	416	416	417	4551	373	1414	24	4	12	11	0	1286	33	1231	56	716	150	666	21
London P.H.L.	4919	28	456	112	596	645	3370	193	3370	40	3	38	3	0	3370	17	3267	74	286	21	63	0
Orillia P.H.L.	1582	8	153	65	226	134	1145	53	1145	19	0	5	0	0	1145	10	1125	31	51	4	11	0
Thunder Bay P.H.L.	1166	2	196	22	220	94	836	27	836	12	2	6	0	0	836	6	825	17	15	0	3	0
Sudbury P.H.L.	1232	3	118	7	128	95	998	11	998	11	2	2	0	0	997	7	953	3	64	1	13	0
Hamilton P.H.L.	3589	29	206	97	332	343	2714	132	2713	33	5	30	3	0	2713	30	2633	52	204	21	64	2
Peterborough P.H.L.	1874	6	99	52	157	126	1523	44	1523	21	0	5	0	0	1523	7	1513	34	58	12	44	2
<b>Province of Ontario</b>	<b>66837</b>	<b>300</b>	<b>3480</b>	<b>2567</b>	<b>6347</b>	<b>4835</b>	<b>57808</b>	<b>2573</b>	<b>35104</b>	<b>369</b>	<b>51</b>	<b>390</b>	<b>80</b>	<b>0</b>	<b>34244</b>	<b>335</b>	<b>34160</b>	<b>817</b>	<b>9372</b>	<b>1422</b>	<b>7995</b>	<b>323</b>
Manitoba	12040	22	378	737	1137	640	11788	579	4998	67	15	48	13	0	4998	68	2621	151	4998	528	2621	97
Regina	14165	70	1163	61	1294	1335	14165	865	14165	375	163	144	64	0	14165	241	14165	744	14165	2586	14165	832
Saskatoon	5887	19	0	391	410	348	5887	255	5786	34	6	36	4	0	5887	49	5887	78	5737	477	5887	99
Province of Saskatchewan	20052	89	1163	452	1704	1683	20052	1120	19951	409	169	180	68	0	20052	290	20052	822	19902	3063	20052	931
Province of Alberta	40208	279	4004	1426	5709	3396	32777	0	32777	549	215	475	314	0	32777	559	32777	1996	32777	4895	32777	1445
<b>Prairies</b>	<b>72300</b>	<b>390</b>	<b>5545</b>	<b>2615</b>	<b>8550</b>	<b>5719</b>	<b>64617</b>	<b>1699</b>	<b>57726</b>	<b>1025</b>	<b>399</b>	<b>703</b>	<b>395</b>	<b>0</b>	<b>57827</b>	<b>917</b>	<b>55450</b>	<b>2969</b>	<b>57677</b>	<b>8486</b>	<b>55450</b>	<b>2473</b>
<b>British Columbia</b>	<b>22000</b>	<b>518</b>	<b>1520</b>	<b>446</b>	<b>2484</b>	<b>3021</b>	<b>21819</b>	<b>888</b>	<b>9269</b>	<b>165</b>	<b>55</b>	<b>109</b>	<b>83</b>	<b>0</b>	<b>9269</b>	<b>112</b>	<b>9269</b>	<b>490</b>	<b>6750</b>	<b>1506</b>	<b>6750</b>	<b>402</b>
Yukon	454	7	48	21	76	43	454	46	N.A.	N.A.	N.A.	N.A.	N.A.	N.A.	N.A.	N.A.	N.A.	N.A.	N.A.	N.A.	N.A.	N.A.
Northwest Territories	759	4	126	0	130	56	753	0	753	11	2	2	24	0	753	28	753	52	753	96	753	52
Nunavut	418	6	40	0	46	6	405	8	406	7	4	14	7	0	405	29	403	26	231	66	222	14
<b>Territories</b>	<b>1631</b>	<b>17</b>	<b>214</b>	<b>21</b>	<b>252</b>	<b>105</b>	<b>1612</b>	<b>54</b>	<b>1159</b>	<b>18</b>	<b>6</b>	<b>16</b>	<b>31</b>	<b>0</b>	<b>1158</b>	<b>57</b>	<b>1156</b>	<b>78</b>	<b>984</b>	<b>162</b>	<b>975</b>	<b>66</b>
<b>CANADA</b>	<b>306339</b>	<b>1269</b>	<b>11145</b>	<b>23630</b>	<b>36044</b>	<b>28222</b>	<b>272979</b>	<b>14628</b>	<b>137867</b>	<b>1964</b>	<b>613</b>	<b>1729</b>	<b>681</b>	<b>0</b>	<b>137362</b>	<b>2483</b>	<b>133388</b>	<b>5452</b>	<b>82880</b>	<b>12315</b>	<b>98144</b>	<b>4072</b>

Specimens from YT, NT and NU are sent to reference laboratories in other provinces and reported results reflect specimens identified as originating from YT, NT or NU.

Delays in the reporting of data may cause data to change retrospectively.

Due to reporting delays, the sum of weekly report totals do not add up to cumulative totals.

Figure 1: Number positive laboratory tests for other respiratory viruses by report week, Canada, 2017-18

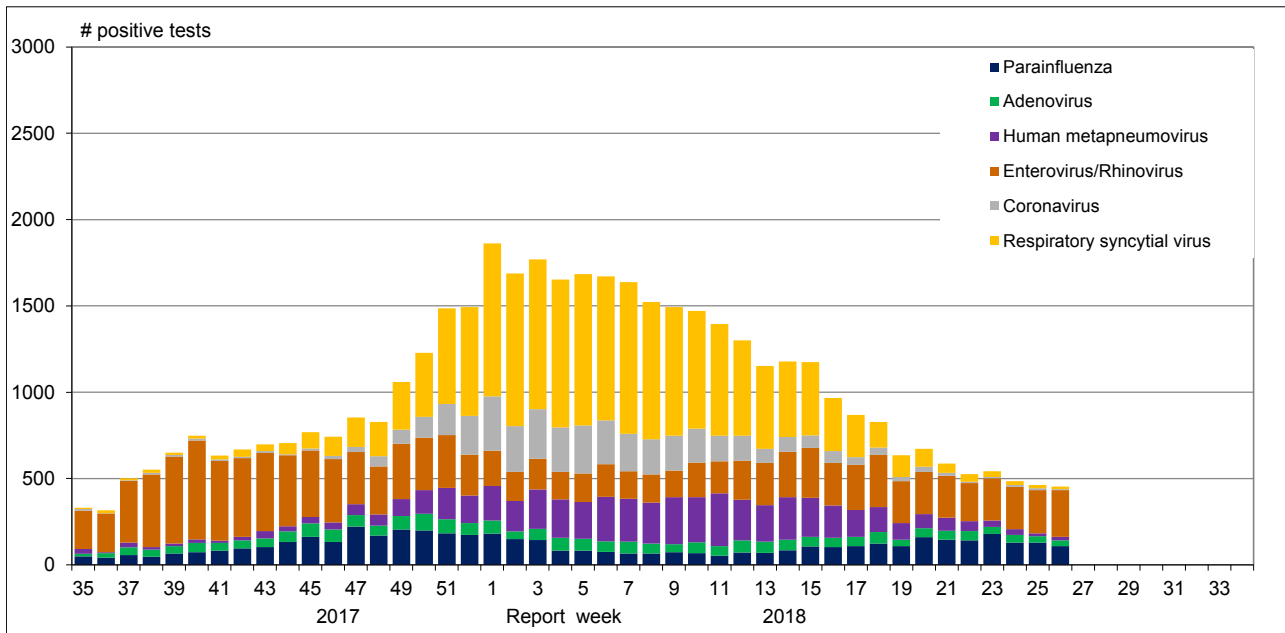


Figure 2: Positive Influenza Tests (%) in Canada by Region by Week of Report

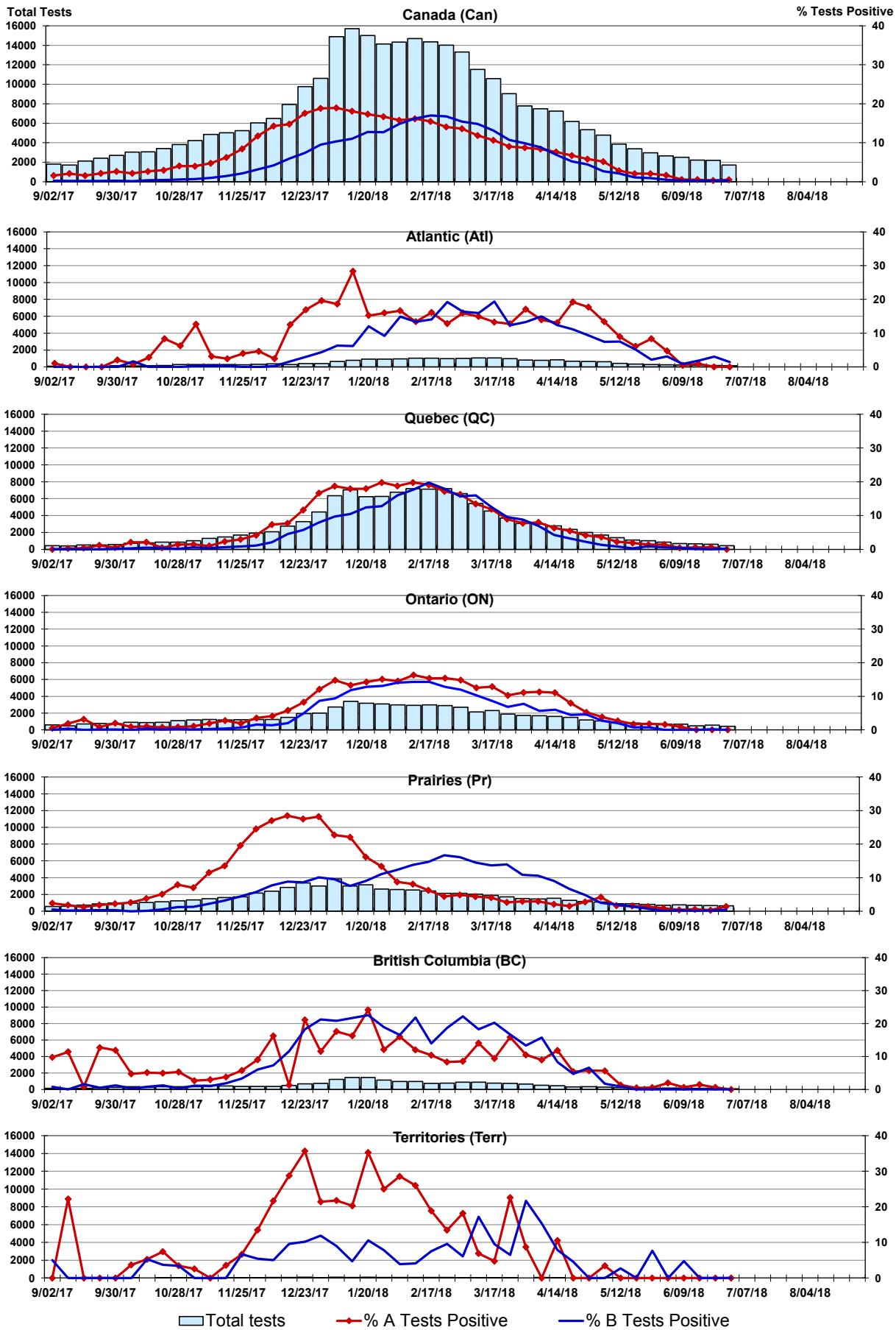


Figure 3: Positive Respiratory syncytial virus (RSV) Tests (%) in Canada by Region by Week of Report

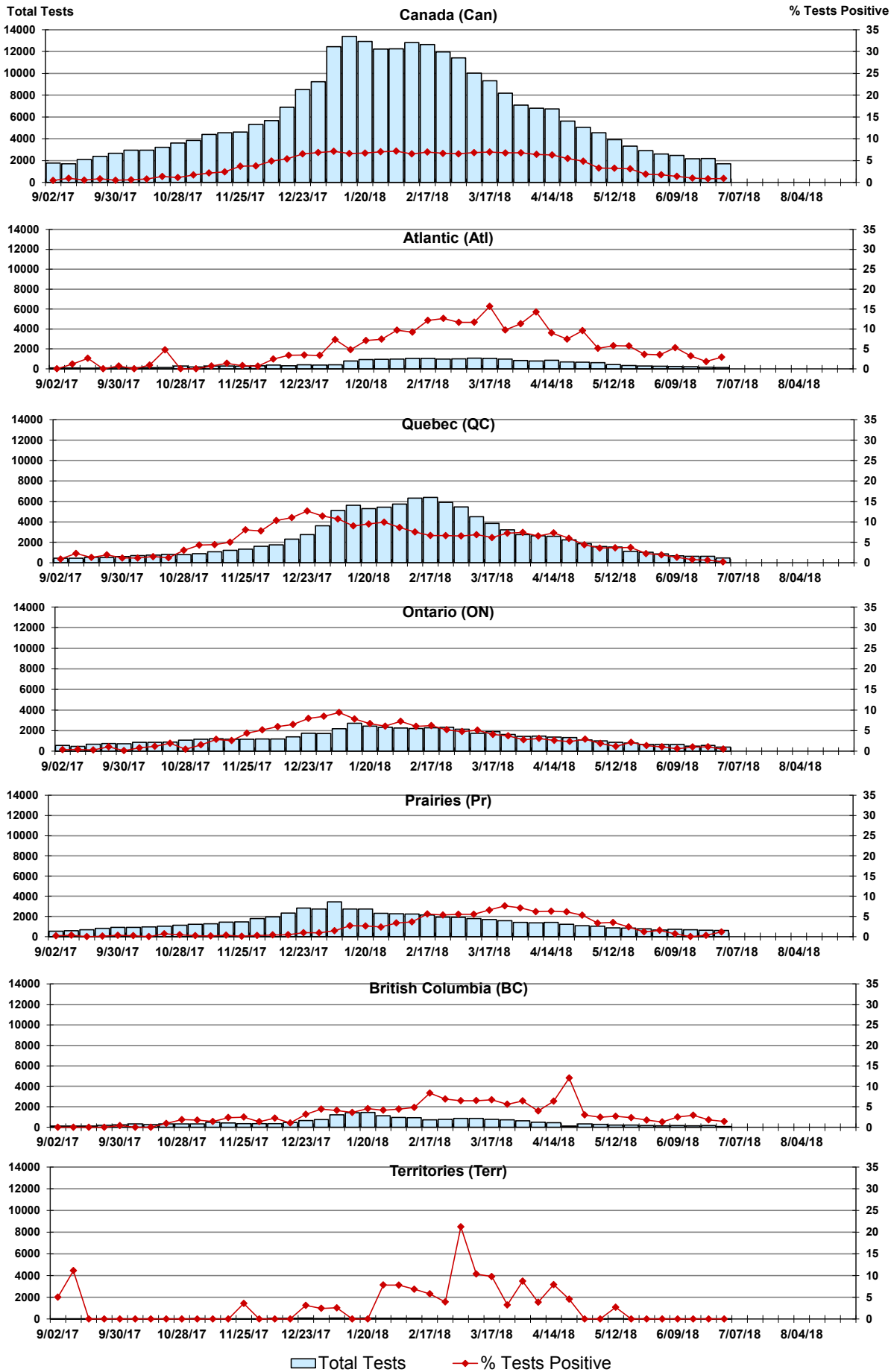


Figure 4: Positive Parainfluenza (PIV) Tests (%) in Canada by Region by Week of Report

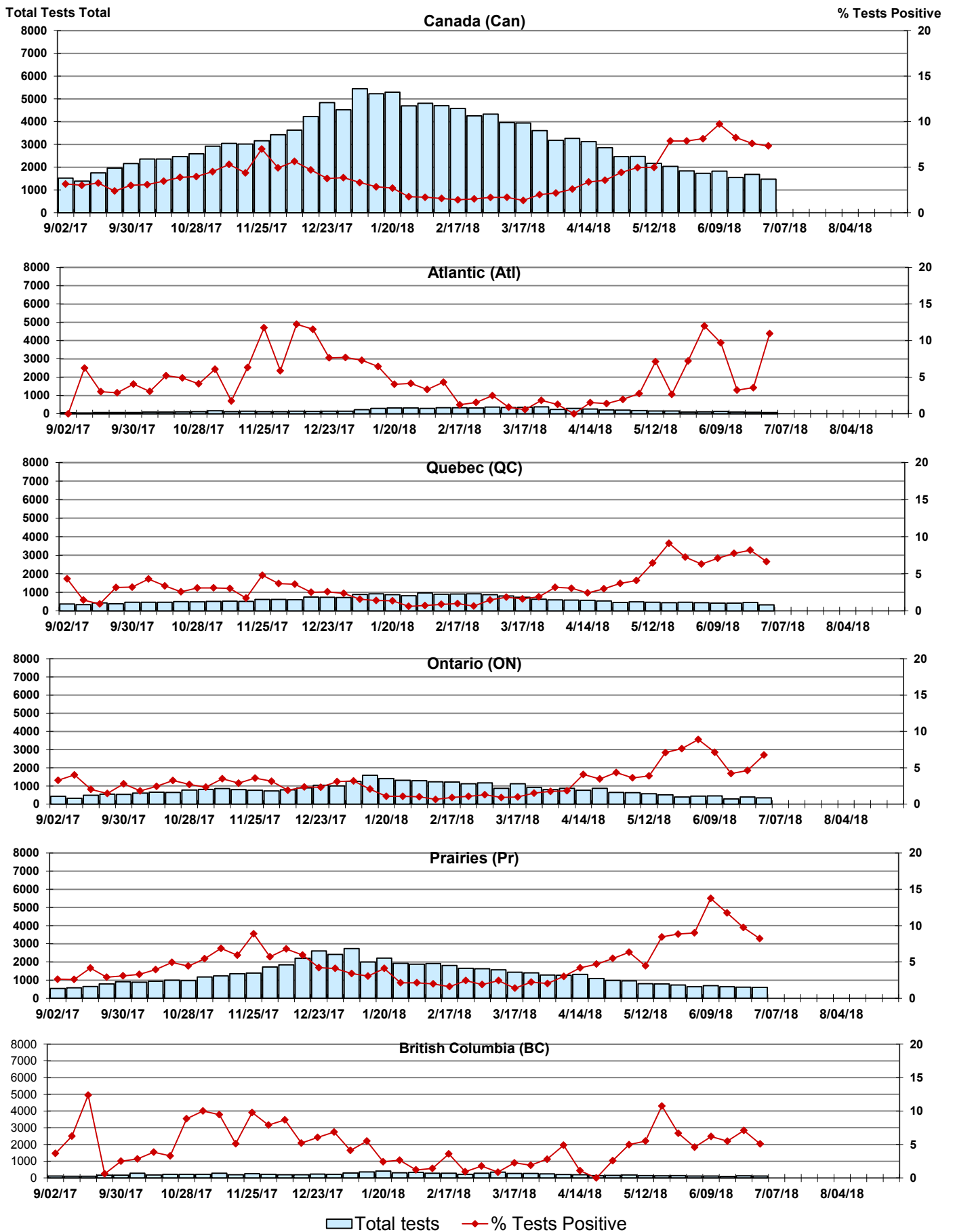


Figure 5: Positive Adenovirus (adeno) Tests (%) in Canada by Region by Week of Report

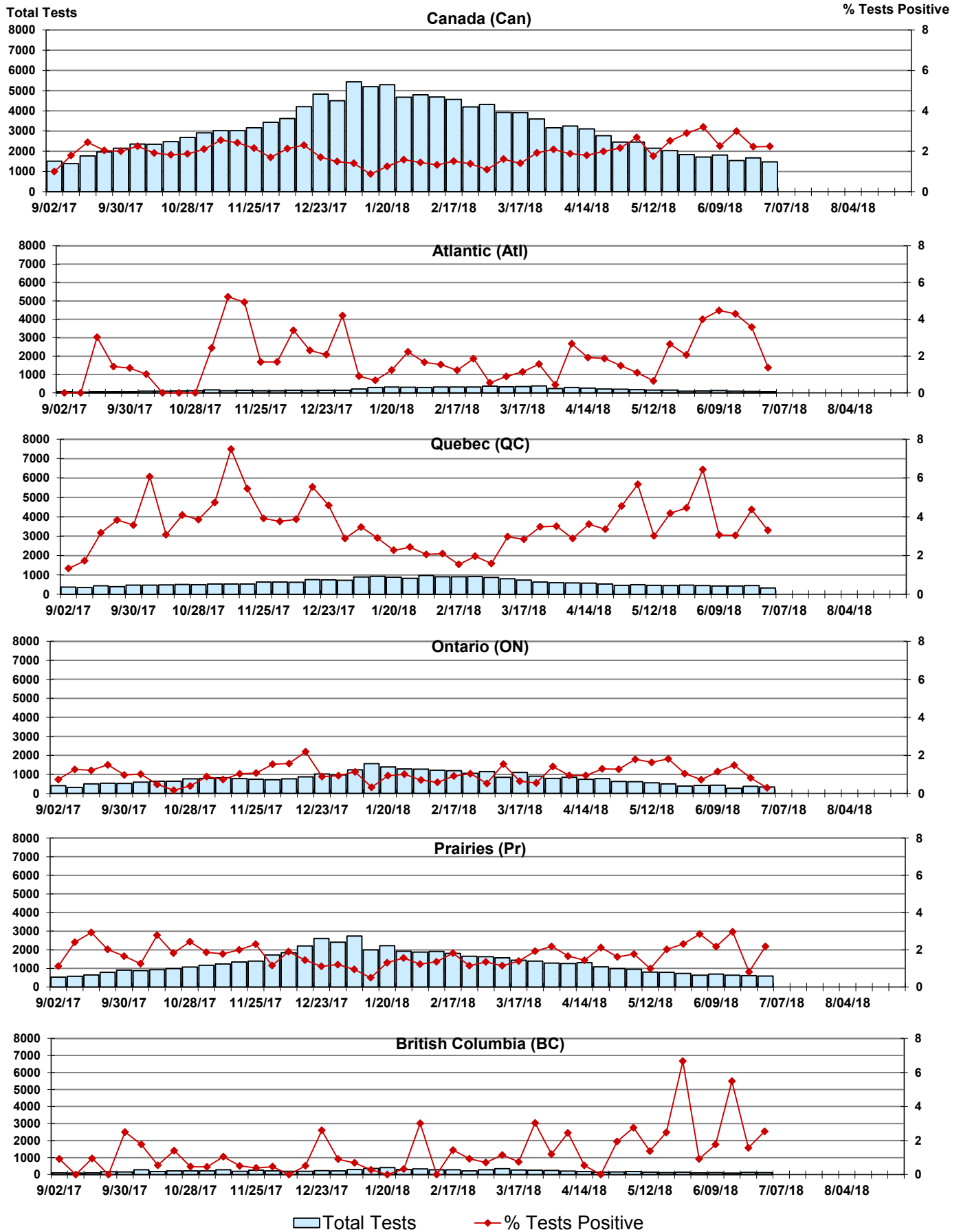


Figure 6: Positive human metapneumovirus (hMPV) Tests (%) in Canada by Region by Week of Report

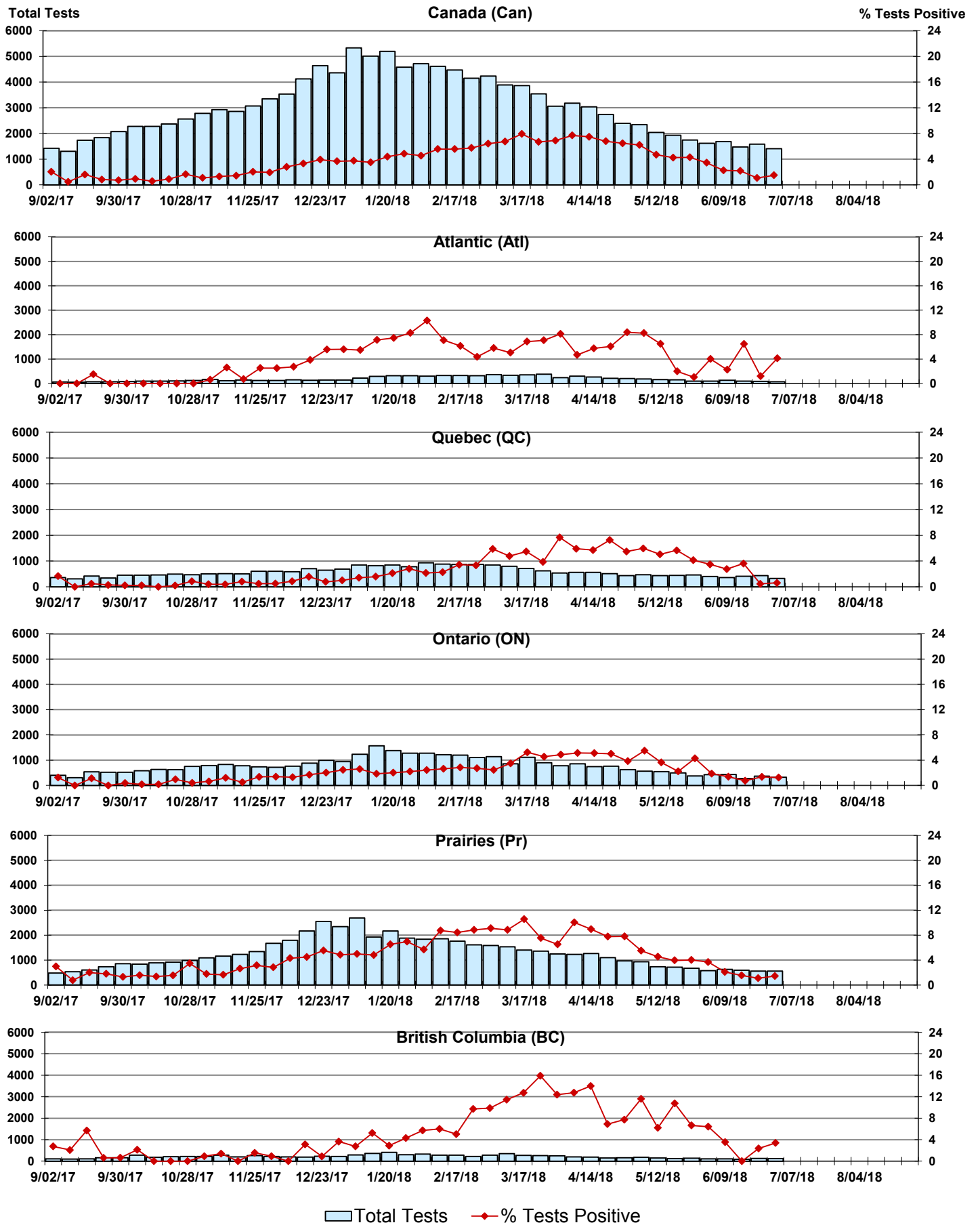




Figure 7: Positive Enterovirus/Rhinovirus (entero/rhino) Tests (%) in Canada by Region by Week of Report

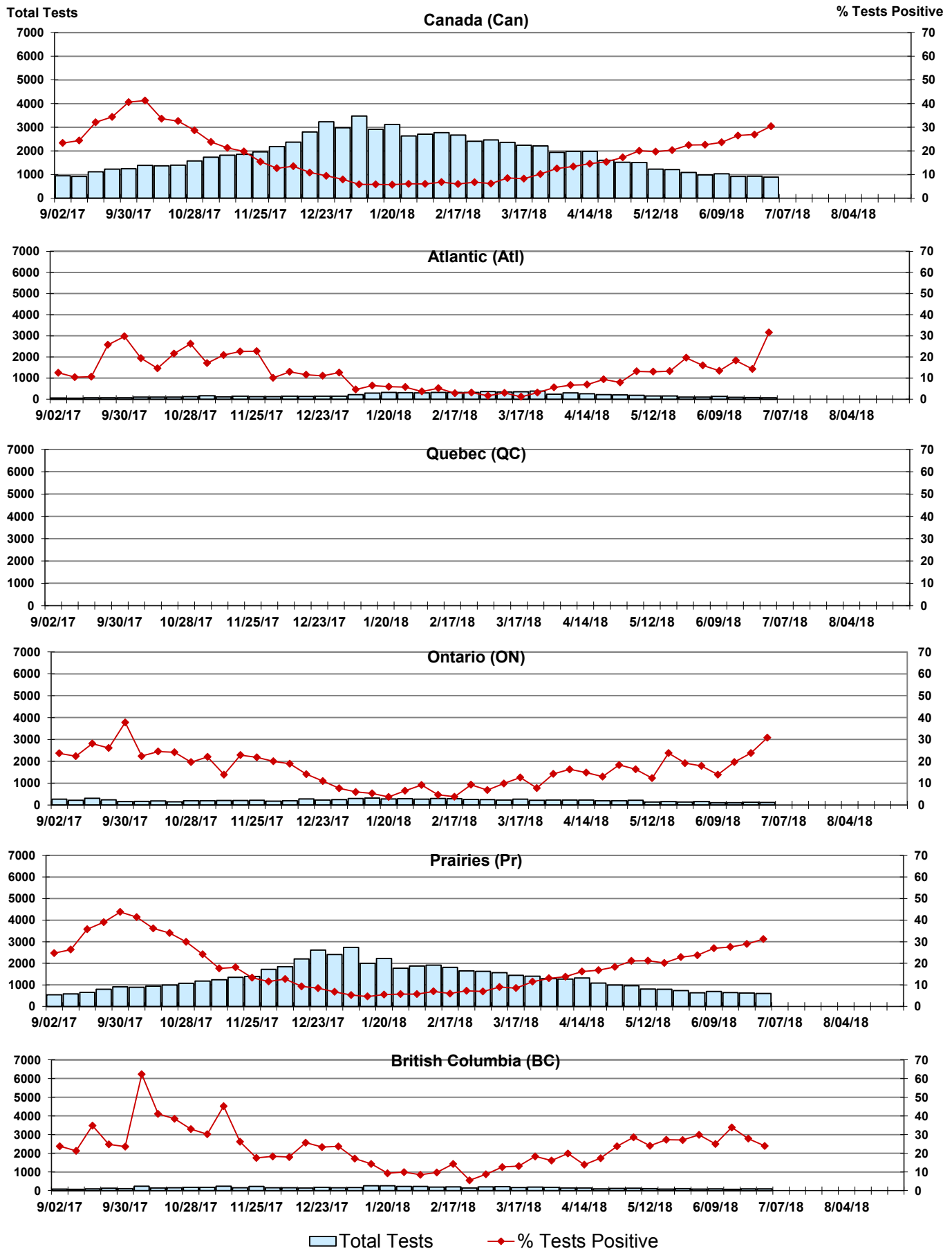
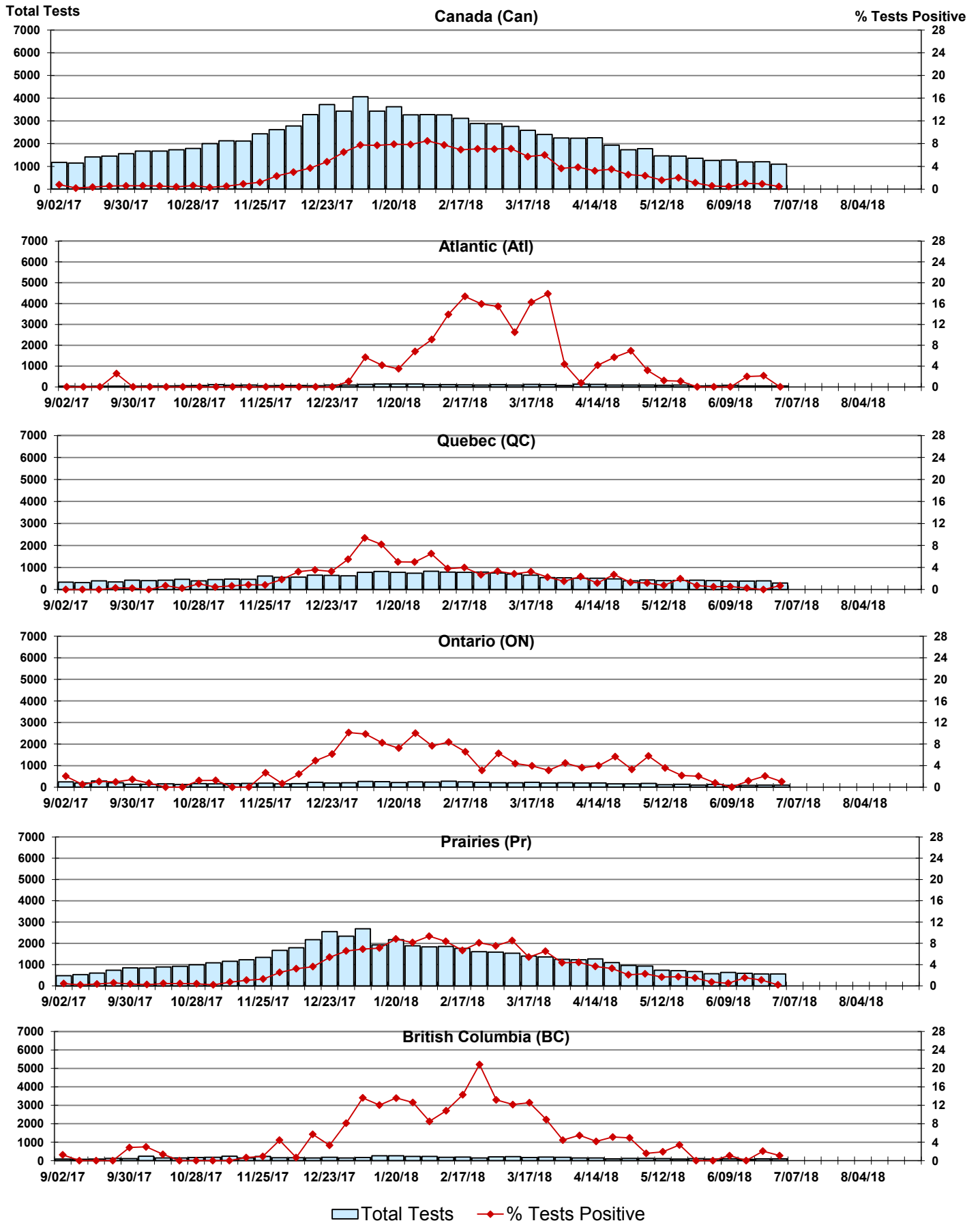


Figure 8: Positive Coronavirus (coron) Tests (%) in Canada by Region by Week of Report



## Abbreviations:

A(H1N1)pdm09: Influenza A(H1N1)pdm09

A(H3): Influenza A(H3N2)

A (UnS): Influenza A (Unsubtyped)

Adeno: Adenovirus

CHEO: Children's Hospital of Eastern Ontario

Coron: Coronavirus

Entero: Enterovirus

hMPV: human metapneumovirus

HSC: Health Sciences Centre

N.A.: Not Applicable

P.H.L.: Public Health Laboratory

P.H.O.L.: Public Health Ontario Laboratory

PIV: Parainfluenza

Rhino: Rhinovirus

RSV: Respiratory syncytial virus

UHN: University Health Network

## Notes:

Specimens from Yukon (YT), Northwest Territories (NT) and Nunavut (NU) are sent to reference laboratories in other provinces. Results reported for the Territories reflect the number of specimens that are identified as originating from YT, NT or NU.

Delays in the reporting of data may cause data to change retrospectively.

Due to reporting delays, the sum of weekly report totals do not add up to cumulative totals.