

Respiratory Virus Detections in Canada

Respiratory Virus Report, Week 04 - ending January 27, 2018

The Respiratory Virus Detection Surveillance System collects data from select laboratories across Canada on the number of tests performed and the number of tests positive for influenza and other respiratory viruses. Data are reported on a weekly basis year-round to the Centre for Immunization and Respiratory Infectious Diseases (CIRID), Public Health Agency of Canada. These data are also summarized in the weekly FluWatch report.

Table 1: Respiratory Virus Detections/Isolations for the week ending January 27, 2018 (Reporting Week 201804)

Reporting Laboratory	Flu Tested	A(H1N1)pdm09 Positive	A(H3) Positive	A(UnS) Positive	Total Flu A Positive	Total Flu B Positive	RSV Tested	RSV Positive	PIV Tested	PIV 1 Positive	PIV 2 Positive	PIV 3 Positive	PIV 4 Positive	Other PIV Positive	Adeno Tested	Adeno Positive	hMPV Tested	hMPV Positive	Entero/Rhino Tested	Entero/Rhino Positive	Coron Tested	Coron Positive
Newfoundland	167	0	0	11	11	12	167	7	167	7	1	1	0	0	167	4	167	17	167	10	N.A.	N.A.
Prince Edward Island	60	1	5	0	6	4	61	15	5	0	0	0	0	0	5	0	5	0	5	0	5	2
Nova Scotia	202	0	0	39	39	13	203	20	12	0	0	0	1	0	12	0	12	0	12	0	12	0
New Brunswick	0	0	0	0	0	0	0	0	0	0	0	0	0	0	0	0	0	0	0	0	0	0
Atlantic	429	1	5	50	56	29	431	42	184	7	1	1	1	0	184	4	184	17	184	10	17	2
Région Nord-Est	800	0	0	135	135	111	666	64	0	0	0	0	0	0	0	0	0	0	N.A.	N.A.	0	0
Québec-Chaudière-Appalaches	1032	0	0	264	264	115	950	105	85	0	0	0	1	0	88	3	70	0	N.A.	N.A.	70	1
Centre-du-Québec	1204	0	0	197	197	205	949	113	0	0	0	0	0	0	0	0	0	0	N.A.	N.A.	0	0
Montréal-Laval	1996	0	0	356	356	220	1821	141	732	3	0	0	1	0	734	17	712	22	N.A.	N.A.	671	36
Ouest du Québec	734	0	0	180	180	105	532	67	0	0	0	0	0	0	0	0	0	0	N.A.	N.A.	0	0
Montérégie	507	0	0	109	109	44	507	48	0	0	0	0	0	0	0	0	0	0	N.A.	N.A.	0	0
Province of Québec	6273	0	0	1241	1241	800	5425	538	817	3	0	0	2	0	822	20	782	22	N.A.	N.A.	741	37
Ottawa P.H.L.	42	1	4	1	6	6	1	0	1	0	0	0	0	0	1	0	0	0	1	0	0	0
CHEO - Ottawa	338	0	0	52	52	25	338	44	27	1	0	0	0	0	28	2	27	2	27	7	27	4
Kingston P.H.L.	49	0	6	0	6	10	3	0	3	0	0	0	0	0	3	0	2	0	1	0	0	0
UHN / Mount Sinai Hospital	538	0	0	58	58	44	538	26	24	0	0	0	0	0	0	0	24	0	N.A.	N.A.	N.A.	N.A.
P.H.O.L. - Toronto	773	12	127	10	149	101	415	10	415	1	1	1	0	0	415	6	405	4	10	0	0	0
Sick Kids Hospital - Toronto	161	1	6	15	22	32	80	9	80	1	0	1	0	0	80	0	80	9	80	9	80	7
Sunnybrook & Women's College HSC	0	0	0	0	0	0	0	0	0	0	0	0	0	0	0	0	0	0	0	0	0	0
Sault Ste. Marie P.H.L.	50	0	2	9	11	2	15	3	15	0	0	0	0	0	15	0	15	0	0	0	0	0
Timmins P.H.L.	32	0	11	3	14	7	7	0	7	0	0	0	0	0	7	0	7	0	0	0	0	0
St. Joseph's - London	0	0	0	0	0	0	0	0	0	0	0	0	0	0	0	0	0	0	0	0	0	0
London P.H.L.	286	1	31	13	45	71	147	9	147	0	0	3	0	0	147	0	139	5	8	0	0	0
Orillia P.H.L.	78	0	13	9	22	11	4	0	4	0	0	0	0	0	4	0	3	0	1	0	0	0
Thunder Bay P.H.L.	82	0	12	5	17	2	44	1	44	0	0	0	0	0	44	0	43	0	1	0	0	0
Sudbury P.H.L.	56	0	3	4	7	2	29	0	29	0	0	0	0	0	29	0	29	0	0	0	0	0
Hamilton P.H.L.	142	1	5	8	14	25	83	4	83	0	2	0	0	0	83	1	82	1	1	0	0	0
Peterborough P.H.L.	83	0	3	2	5	14	31	0	31	1	0	0	0	0	31	1	30	0	1	0	0	0
Province of Ontario	2710	16	223	189	428	352	1735	106	910	4	1	7	0	0	887	10	886	21	131	16	107	11
Manitoba	503	0	11	67	78	25	496	25	99	2	0	0	2	0	99	0	58	7	99	1	58	5
Regina	619	4	105	3	112	97	619	25	619	13	4	1	2	0	619	4	619	49	619	35	619	71
Saskatoon	150	0	0	11	11	20	150	5	150	0	0	0	0	0	150	0	150	0	0	0	150	0
Province of Saskatchewan	769	4	105	14	123	117	769	30	769	13	4	1	2	0	769	4	769	49	619	35	769	71
Province of Alberta	1291	6	101	36	143	140	992	0	992	8	5	2	2	0	992	24	992	70	992	58	992	72
Prairies	2563	10	217	117	344	282	2257	55	1860	23	9	3	6	0	1860	28	1819	126	1710	94	1819	148
British Columbia	735	24	112	33	169	172	735	42	306	7	1	0	1	0	306	1	306	13	226	22	226	29
Yukon	37	1	8	6	15	2	37	5	N.A.	N.A.	N.A.	N.A.	N.A.	N.A.	N.A.	N.A.	N.A.	N.A.	N.A.	N.A.	N.A.	N.A.
Northwest Territories	18	0	2	0	2	3	18	0	18	0	0	0	0	0	18	1	18	1	18	0	18	2
Nunavut	6	0	3	0	3	0	6	0	6	0	0	0	1	0	6	1	6	0	5	0	5	0
Territories	61	1	13	6	20	5	61	5	24	0	0	0	1	0	24	2	24	1	23	0	23	2
CANADA	12771	52	570	1636	2258	1640	10644	788	4101	44	12	11	11	0	4083	65	4001	200	2274	142	2933	229

Specimens from Yukon (YT), Northwest Territories (NT) and Nunavut (NU) are sent to reference laboratories in other provinces and reported results reflect specimens identified as originating from YT, NT or NU. Delays in the reporting of data may cause data to change retrospectively.

Table 2: Respiratory Virus Detections/Isolations for the period August 27, 2017 - January 27, 2018 (Reporting Weeks / Code hebdomadaire 201735-201804)

Reporting Laboratory	Flu Tested	A(H1N1)pdm09 Positive	A(H3) Positive	A(UnS) Positive	Total Flu A Positive	Total Flu B Positive	RSV Tested	RSV Positive	PIV Tested	PIV 1 Positive	PIV 2 Positive	PIV 3 Positive	PIV 4 Positive	Other PIV Positive	Adeno Tested	Adeno Positive	hMPV Tested	hMPV Positive	Entero/Rhino Tested	Entero/Rhino Positive	Coron Tested	Coron Positive
Newfoundland	1423	0	3	50	53	31	1423	30	1423	85	7	27	0	0	1423	24	1424	78	1423	146	N.A.	N.A.
Prince Edward Island	501	3	50	0	53	70	513	41	39	0	0	2	0	0	39	1	39	0	39	5	39	2
Nova Scotia	1398	0	0	191	191	43	1412	121	290	4	1	1	1	0	290	4	290	3	290	53	290	2
New Brunswick	3538	0	84	465	549	125	3093	50	1230	24	19	2	10	0	1230	26	1230	30	1230	192	1230	18
Atlantic	6860	3	137	706	846	269	6441	242	2982	113	27	30	13	0	2982	55	2983	111	2982	396	1559	22
Région Nord-Est	5352	0	0	789	789	375	4691	324	0	0	0	0	0	0	0	0	0	0	N.A.	N.A.	0	0
Québec-Chaudière-Appalaches	6678	0	0	1100	1100	496	6746	661	1797	29	1	0	19	0	1840	67	1547	4	N.A.	N.A.	1485	6
Centre-du-Québec	7744	0	0	1081	1081	890	6190	686	0	0	0	0	0	0	0	0	0	0	N.A.	N.A.	0	0
Montréal-Laval	22520	0	0	2238	2238	1273	19136	1454	11253	170	22	56	34	0	11420	436	10844	119	N.A.	N.A.	10115	340
Ouest du Québec	5275	0	0	747	747	433	2904	307	0	0	0	0	0	0	0	0	0	0	N.A.	N.A.	0	0
Montérégie	3879	0	0	585	585	238	3879	329	0	0	0	0	0	0	0	0	0	0	N.A.	N.A.	0	0
Province of Québec	51448	0	0	6540	6540	3705	43546	3761	13050	199	23	56	53	0	13260	503	12391	123	N.A.	N.A.	11600	346
Ottawa P.H.L.	449	2	39	29	70	43	264	4	264	3	0	0	0	0	264	3	258	1	21	6	10	1
CHEO - Ottawa	4024	0	0	302	302	165	4023	306	468	12	1	2	7	0	495	12	550	11	494	122	494	23
Kingston P.H.L.	582	0	55	20	75	36	391	10	391	8	0	0	1	0	391	5	360	2	86	7	22	0
UHN / Mount Sinai Hospital	5706	0	0	242	242	208	5706	232	408	6	1	0	8	0	0	0	386	5	N.A.	N.A.	N.A.	N.A.
P.H.O.L. - Toronto	8251	59	606	49	714	376	6864	194	6864	97	7	14	1	0	6864	65	6650	46	536	48	234	5
Sick Kids Hospital - Toronto	1615	9	28	26	63	59	1410	161	1410	29	2	6	25	0	1410	31	1410	84	1410	350	1410	66
Sunnybrook & Women's College HSC	1395	1	57	1	59	49	1395	38	1395	19	8	2	3	0	1395	0	1395	18	1395	154	1395	42
Sault Ste. Marie P.H.L.	284	0	26	14	40	5	214	4	214	4	0	0	1	0	214	0	207	1	20	3	12	0
Timmins P.H.L.	193	6	29	7	42	15	131	2	131	0	0	0	0	0	131	1	123	0	14	1	2	0
St. Joseph's - London	1922	0	0	118	118	241	1922	201	647	23	1	0	11	0	647	20	573	9	404	102	354	5
London P.H.L.	2367	4	218	58	280	344	1623	76	1623	32	2	8	3	0	1623	7	1563	16	163	21	63	0
Orillia P.H.L.	760	0	71	28	99	38	511	22	511	15	0	2	0	0	511	4	504	7	29	4	11	0
Thunder Bay P.H.L.	621	0	142	22	164	6	427	4	427	6	1	2	0	0	427	0	422	4	8	0	3	0
Sudbury P.H.L.	622	3	49	7	59	14	525	4	525	7	0	0	0	0	524	3	499	0	41	1	13	0
Hamilton P.H.L.	1826	9	67	39	115	110	1502	90	1502	28	4	6	3	0	1502	15	1452	28	141	21	64	2
Peterborough P.H.L.	1157	3	36	20	59	71	946	32	946	20	0	1	0	0	946	4	942	7	50	12	44	2
Province of Ontario	31774	96	1423	982	2501	1780	27854	1380	17726	309	27	43	63	0	17344	170	17294	239	4812	852	4131	146
Manitoba	6576	7	327	641	975	102	6405	162	2727	55	12	1	10	0	2727	40	1368	67	2727	292	1368	40
Regina	7433	36	935	47	1018	357	7433	126	7433	351	80	8	28	0	7433	135	7433	340	7433	1553	7433	362
Saskatoon	3191	0	0	271	271	125	3191	71	3090	30	3	7	2	0	3191	35	3191	43	3041	365	3191	38
Province of Saskatchewan	10624	36	935	318	1289	482	10624	197	10523	381	83	15	30	0	10624	170	10624	383	10474	1918	10624	400
Province of Alberta	23412	88	3690	1226	5004	1939	18733	0	18733	477	128	68	206	0	18733	282	18733	756	18733	2774	18733	754
Prairies	40612	131	4952	2185	7268	2523	35762	359	31983	913	223	84	246	0	32084	492	30725	1206	31934	4984	30725	1194
British Columbia	11127	221	958	391	1570	1494	11127	324	4913	149	37	20	72	0	4913	36	4913	99	3671	969	3671	169
Yukon	235	2	19	12	33	37	235	13	N.A.	N.A.	N.A.	N.A.	N.A.	N.A.	N.A.	N.A.	N.A.	N.A.	N.A.	N.A.	N.A.	N.A.
Northwest Territories	408	1	115	0	116	18	405	0	405	11	0	0	12	0	405	4	405	20	405	54	405	20
Nunavut	255	0	25	0	25	2	242	1	243	7	1	8	1	0	242	11	241	7	72	27	64	1
Territories	898	3	159	12	174	57	882	14	648	18	1	8	13	0	647	15	646	27	477	81	469	21
CANADA	142719	454	7629	10816	18899	9828	125612	6080	71302	1701	338	241	460	0	71230	1271	68952	1805	43876	7282	52155	1898

Specimens from YT, NT and NU are sent to reference laboratories in other provinces and reported results reflect specimens identified as originating from YT, NT or NU.

Delays in the reporting of data may cause data to change retrospectively.

Due to reporting delays, the sum of weekly report totals do not add up to cumulative totals.

Figure 1: Number positive laboratory tests for other respiratory viruses by report week, Canada, 2017-18

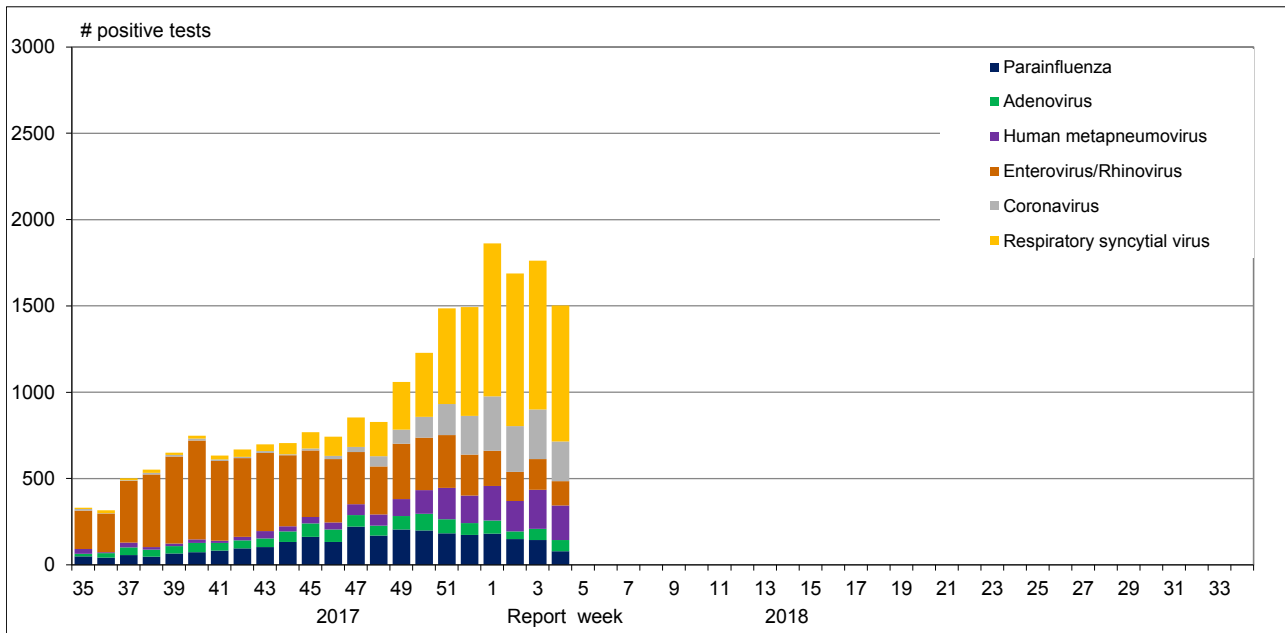


Figure 2: Positive Influenza Tests (%) in Canada by Region by Week of Report

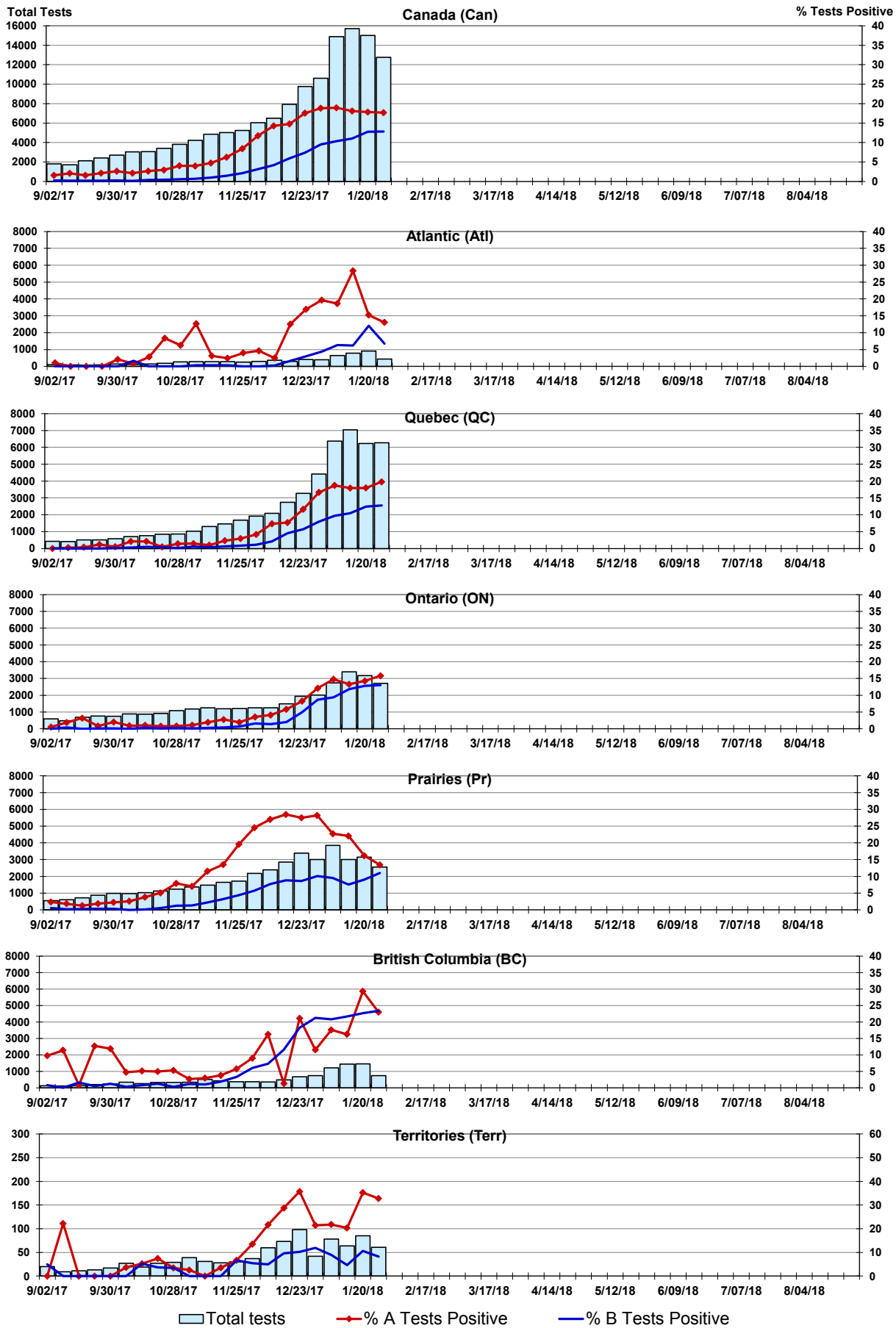


Figure 3: Positive Respiratory syncytial virus (RSV) Tests (%) in Canada by Region by Week of Report

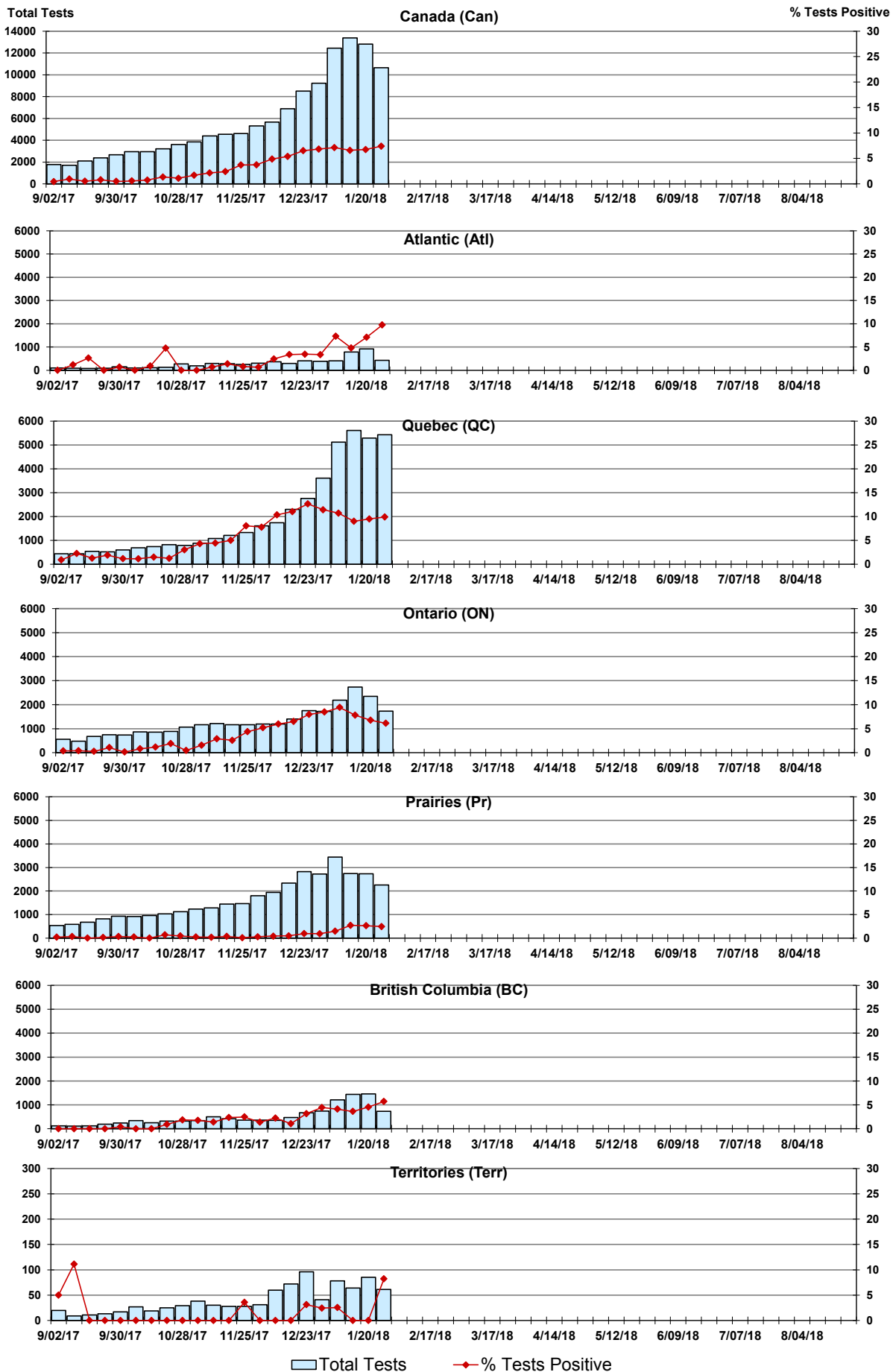


Figure 4: Positive Parainfluenza (PIV) Tests (%) in Canada by Region by Week of Report

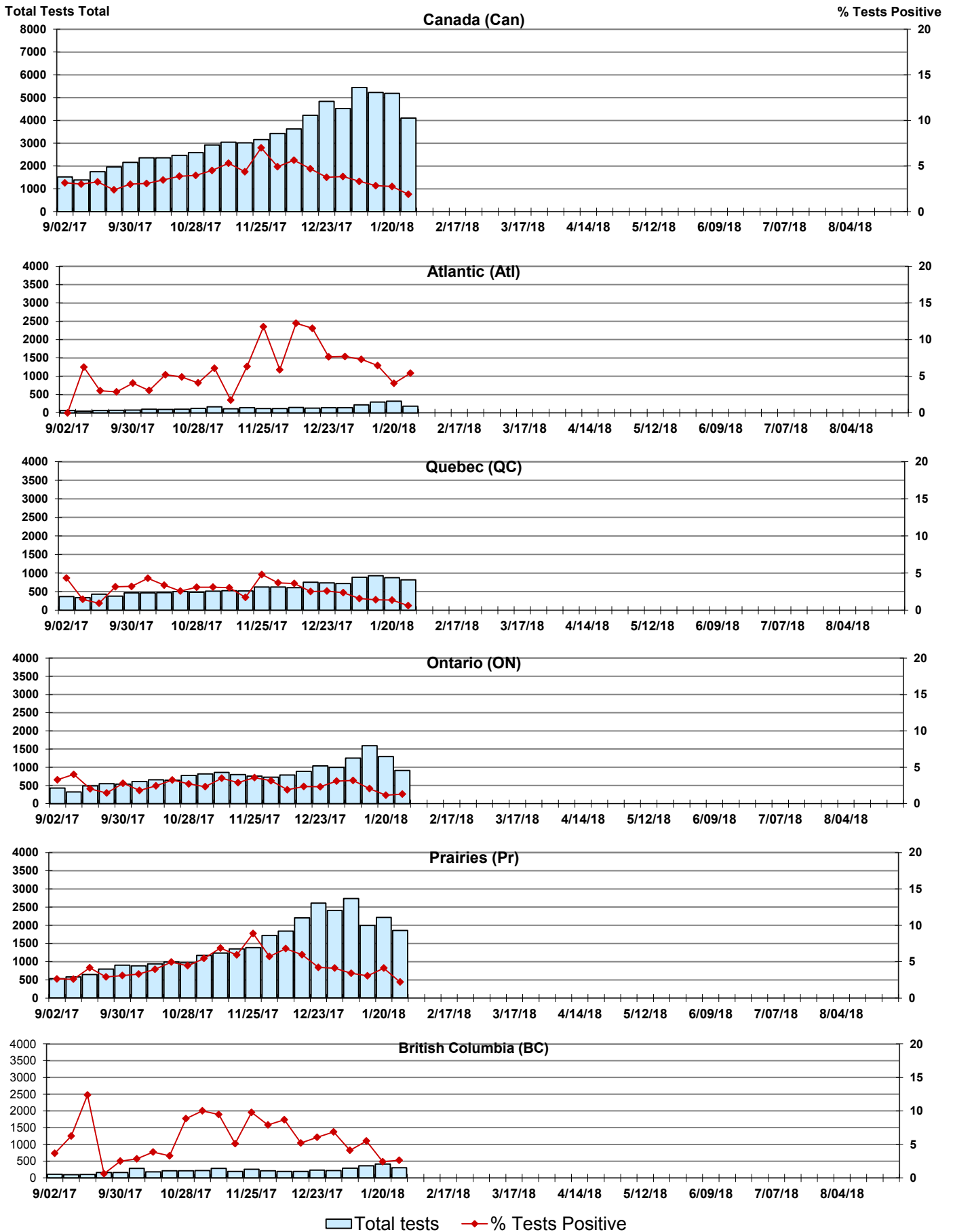


Figure 5: Positive Adenovirus (adeno) Tests (%) in Canada by Region by Week of Report

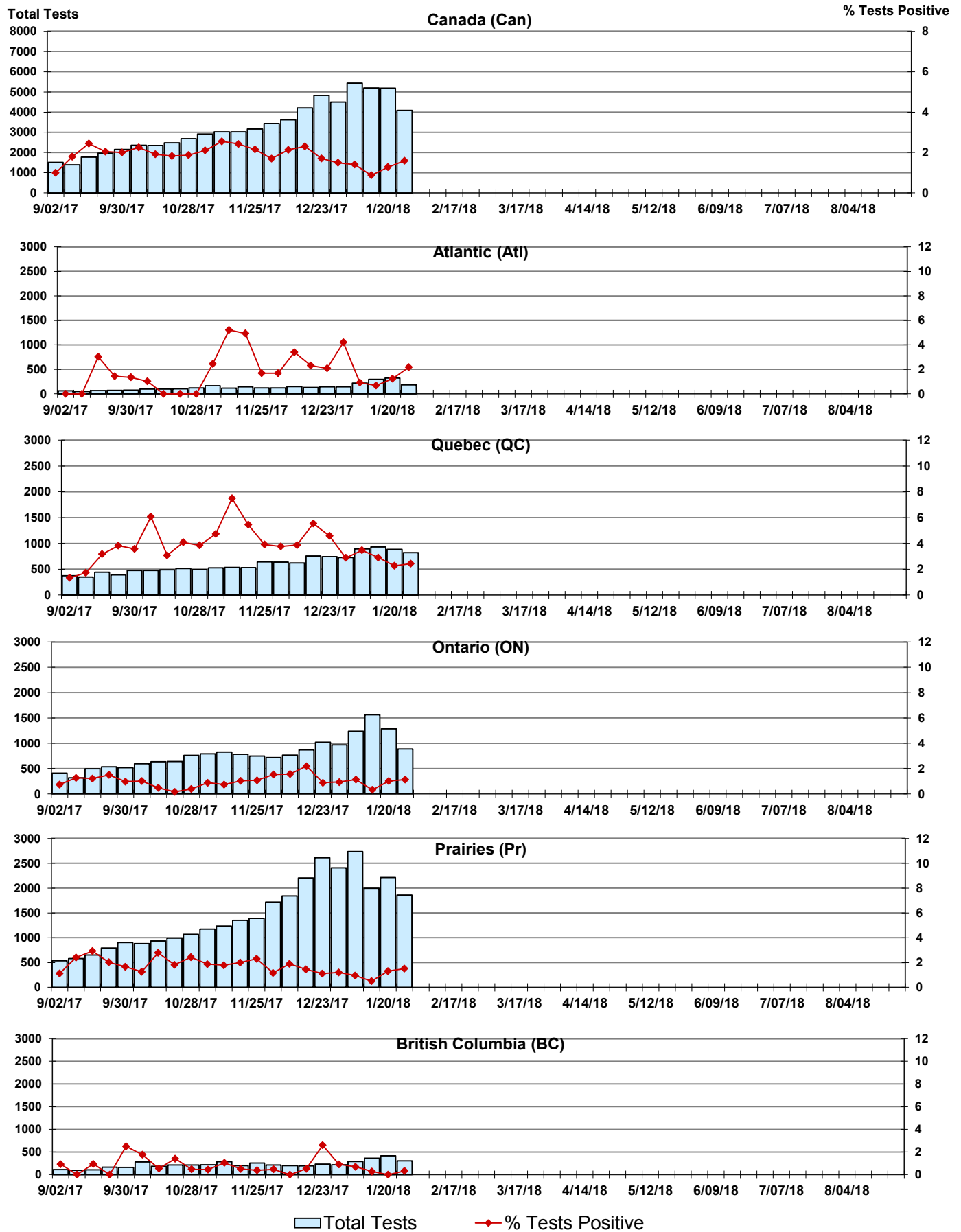


Figure 6: Positive human metapneumovirus (hMPV) Tests (%) in Canada by Region by Week of Report

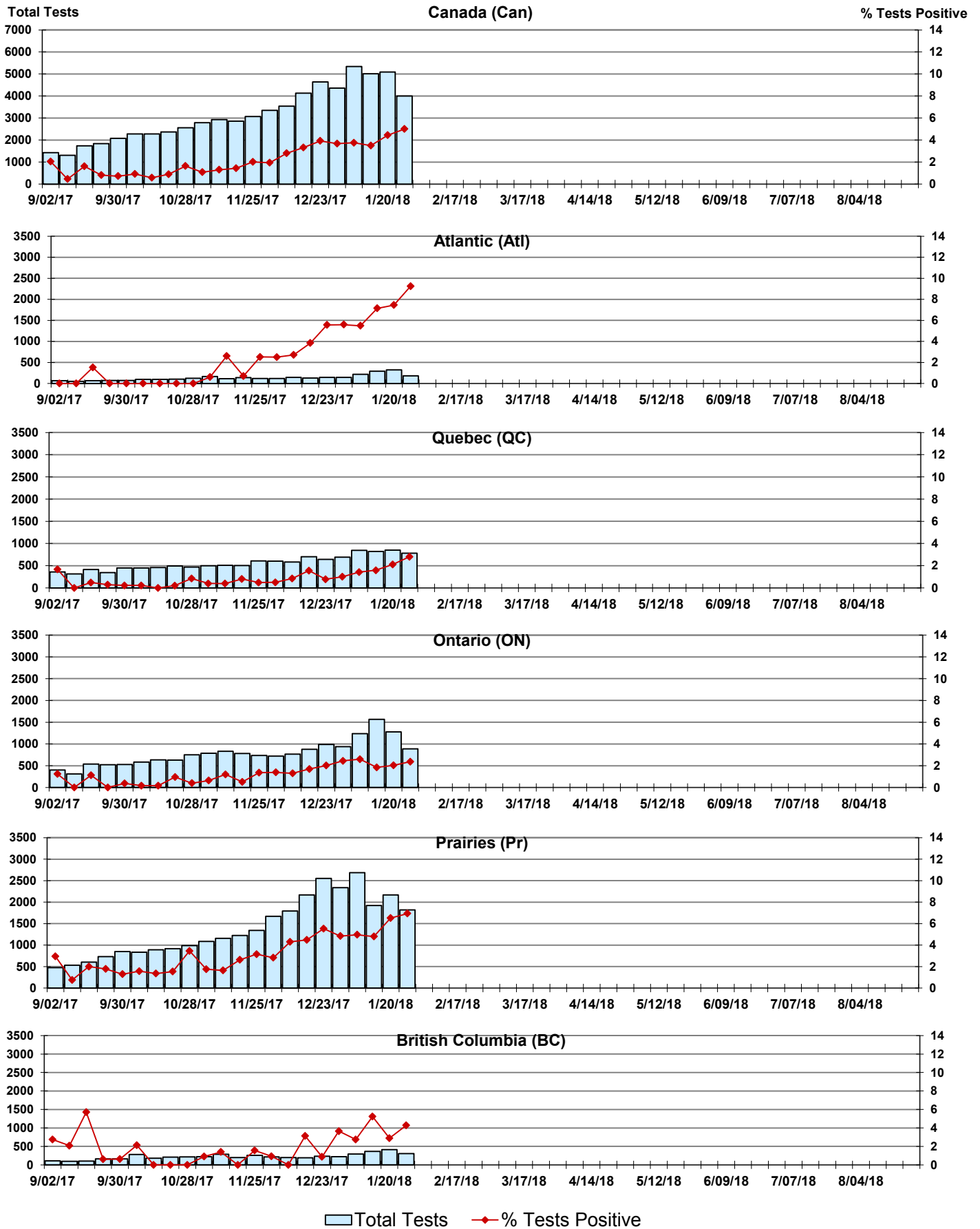


Figure 7: Positive Enterovirus/Rhinovirus (entero/rhino) Tests (%) in Canada by Region by Week of Report

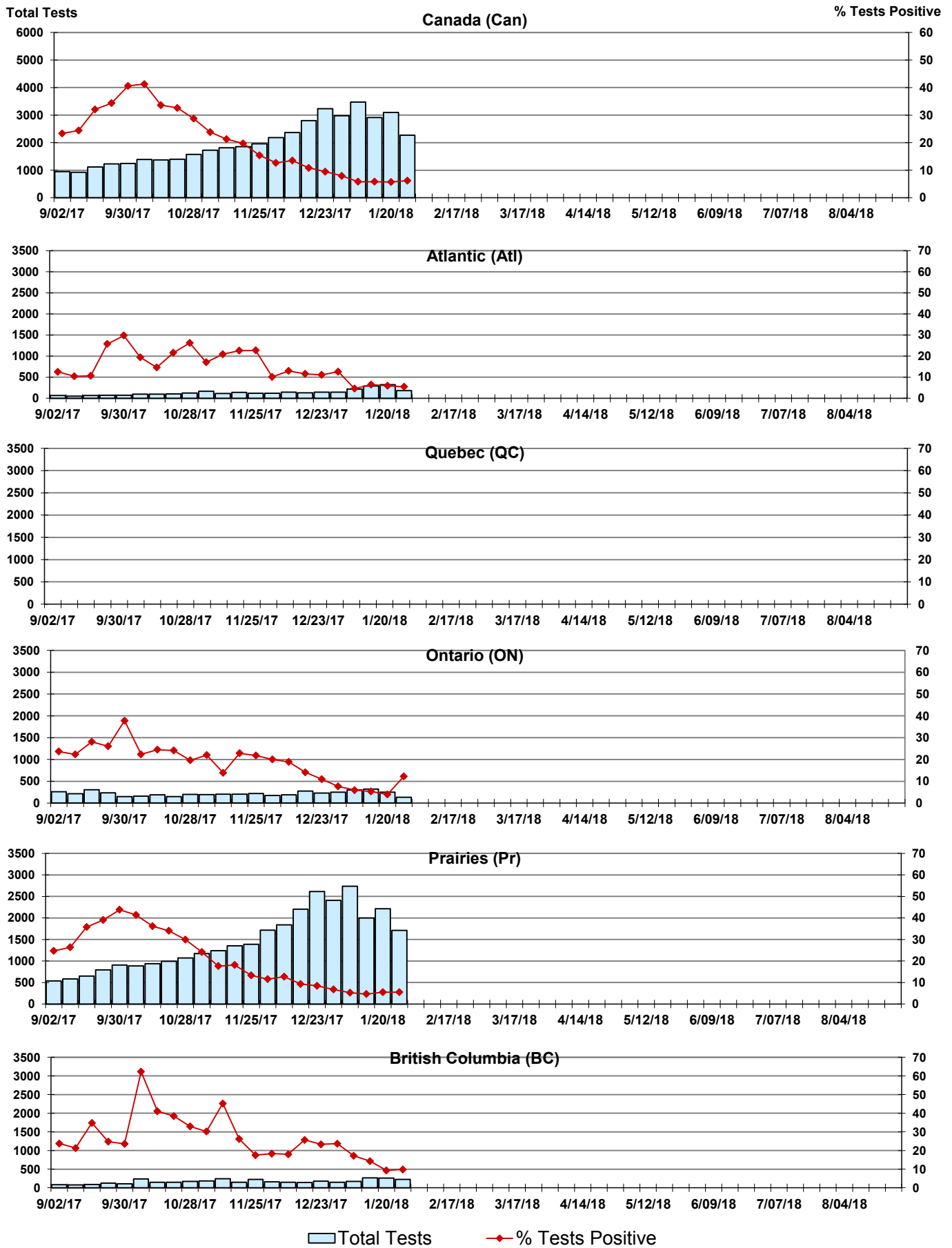
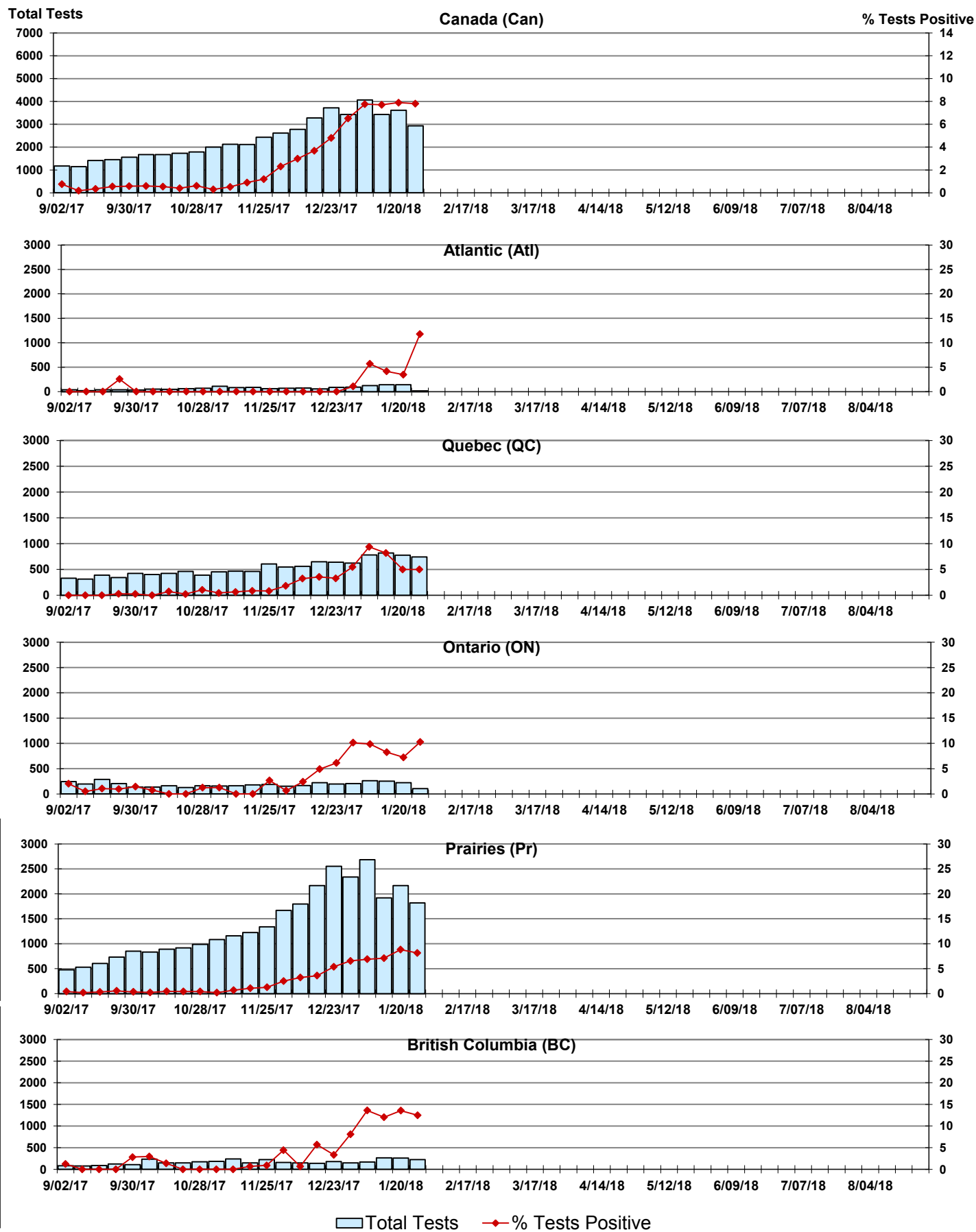


Figure 8: Positive Coronavirus (coron) Tests (%) in Canada by Region by Week of Report



Abbreviations:

A(H1N1)pdm09: Influenza A(H1N1)pdm09

A(H3): Influenza A(H3N2)

A (UnS): Influenza A (Unsubtyped)

Adeno: Adenovirus

CHEO: Children's Hospital of Eastern Ontario

Coron: Coronavirus

Entero: Enterovirus

hMPV: human metapneumovirus

HSC: Health Sciences Centre

N.A.: Not Applicable

P.H.L.: Public Health Laboratory

P.H.O.L.: Public Health Ontario Laboratory

PIV: Parainfluenza

Rhino: Rhinovirus

RSV: Respiratory syncytial virus

UHN: University Health Network

Notes:

Specimens from Yukon (YT), Northwest Territories (NT) and Nunavut (NU) are sent to reference laboratories in other provinces. Results reported for the Territories reflect the number of specimens that are identified as originating from YT, NT or NU.

Delays in the reporting of data may cause data to change retrospectively.

Due to reporting delays, the sum of weekly report totals do not add up to cumulative totals.