

Respiratory Virus Detections in Canada

Respiratory Virus Report, Week 52 - ending December 30, 2017

The Respiratory Virus Detection Surveillance System collects data from select laboratories across Canada on the number of tests performed and the number of tests positive for influenza and other respiratory viruses. Data are reported on a weekly basis year-round to the Centre for Immunization and Respiratory Infectious Diseases (CIRID), Public Health Agency of Canada. These data are also summarized in the weekly FluWatch report.

Table 1: Respiratory Virus Detections/Isolations for the week ending December 30, 2017 (Reporting Week 201752)

Reporting Laboratory	Flu Tested	A(H1N1)pdm09 Positive	A(H3) Positive	A(UnS) Positive	Total Flu A Positive	Total Flu B Positive	RSV Tested	RSV Positive	PIV Tested	PIV 1 Positive	PIV 2 Positive	PIV 3 Positive	PIV 4 Positive	Other PIV Positive	Adeno Tested	Adeno Positive	hMPV Tested	hMPV Positive	Entero/Rhino Tested	Entero/Rhino Positive	Coron Tested	Coron Positive
Newfoundland	49	0	0	2	2	1	49	2	49	4	0	2	0	0	49	3	49	0	49	4	N.A.	N.A.
Prince Edward Island	39	0	12	0	12	11	39	0	3	0	0	0	0	0	3	0	3	0	3	1	3	0
Nova Scotia	58	0	0	8	8	0	58	11	4	0	0	0	0	0	4	0	4	0	4	1	4	0
New Brunswick	242	0	0	54	54	5	242	0	87	4	0	0	1	0	87	3	87	8	87	12	87	1
Atlantic	388	0	12	64	76	17	388	13	143	8	0	2	1	0	143	6	143	8	143	18	94	1
Région Nord-Est	612	0	0	122	122	30	564	12	0	0	0	0	0	0	0	0	0	0	N.A.	N.A.	0	0
Québec-Chaudière-Appalaches	525	0	0	100	100	59	495	67	67	1	0	0	6	0	68	4	55	1	N.A.	N.A.	55	2
Centre-du-Québec	656	0	0	92	92	66	516	84	0	0	0	0	0	0	0	0	0	0	N.A.	N.A.	0	0
Montréal-Laval	1750	0	0	277	277	121	1413	203	654	6	0	1	3	0	660	17	637	6	N.A.	N.A.	566	32
Ouest du Québec	487	0	0	75	75	41	235	19	0	0	0	0	0	0	0	0	0	0	N.A.	N.A.	0	0
Montérégie	387	0	0	69	69	35	387	28	0	0	0	0	0	0	0	0	0	0	N.A.	N.A.	0	0
Province of Québec	4417	0	0	735	735	352	3610	413	721	7	0	1	9	0	728	21	692	7	N.A.	N.A.	621	34
Ottawa P.H.L.	17	0	3	3	6	1	0	0	0	0	0	0	0	0	0	0	0	0	0	0	0	0
CHEO - Ottawa	304	0	0	31	31	16	304	41	19	0	0	0	0	0	19	1	19	0	19	2	19	3
Kingston P.H.L.	32	0	6	3	9	2	10	0	10	0	0	0	0	0	10	0	10	0	0	0	0	0
UHN / Mount Sinai Hospital	321	0	0	18	18	18	321	15	29	1	1	0	1	0	0	0	29	1	N.A.	N.A.	N.A.	N.A.
P.H.O.L. - Toronto	459	0	66	3	69	35	347	20	347	5	0	2	0	0	347	3	332	4	15	0	0	0
Sick Kids Hospital - Toronto	75	2	2	0	4	3	75	12	75	2	0	1	2	0	75	2	75	9	75	9	75	13
Sunnybrook & Women's College HSC	93	0	9	0	9	2	93	4	93	1	0	0	0	0	93	0	93	3	93	2	93	3
Sault Ste. Marie P.H.L.	5	0	0	1	1	0	2	1	2	0	0	0	0	0	2	0	2	0	0	0	0	0
Timmins P.H.L.	8	1	0	2	3	0	1	0	1	0	0	0	0	0	1	0	1	0	0	0	0	0
St. Joseph's - London	202	0	0	16	16	44	202	26	51	0	0	0	1	0	51	1	20	0	20	6	20	2
London P.H.L.	189	0	10	18	28	42	104	7	104	4	0	2	0	0	104	0	102	1	2	0	0	0
Orillia P.H.L.	55	0	6	4	10	2	11	0	11	1	0	0	0	0	11	0	11	0	0	0	0	0
Thunder Bay P.H.L.	34	0	3	10	13	0	5	0	5	1	0	0	0	0	5	0	5	0	0	0	0	0
Sudbury P.H.L.	15	0	3	0	3	0	9	0	9	0	0	0	0	0	9	0	6	0	3	0	0	0
Hamilton P.H.L.	112	0	5	8	13	3	93	15	93	2	0	0	0	0	93	0	90	4	3	0	0	0
Peterborough P.H.L.	80	0	4	6	10	5	46	2	46	0	0	0	0	0	46	1	46	0	0	0	0	0
Province of Ontario	2001	3	117	123	243	173	1623	143	895	17	1	5	4	0	866	8	841	22	230	19	207	21
Manitoba	543	1	60	85	146	11	526	10	212	6	0	0	0	0	212	2	139	5	212	14	139	4
Regina	396	4	106	8	118	23	396	13	396	23	4	2	2	0	396	6	396	30	396	35	396	23
Saskatoon	250	0	0	35	35	19	250	2	250	3	1	0	1	0	250	2	250	11	250	7	250	2
Province of Saskatchewan	646	4	106	43	153	42	646	15	646	26	5	2	3	0	646	8	646	41	646	42	646	25
Province of Alberta	1731	6	439	70	515	235	1488	0	1488	31	6	6	13	0	1488	18	1488	64	1488	100	1488	107
Prairies	2920	11	605	198	814	288	2660	25	2346	63	11	8	16	0	2346	28	2273	110	2346	156	2273	136
British Columbia	775	14	36	38	88	159	775	34	219	7	3	0	5	0	219	2	219	8	148	35	148	12
Yukon	12	0	0	0	0	3	12	1	N.A.	N.A.	N.A.	N.A.	N.A.	N.A.	N.A.	N.A.	N.A.	N.A.	N.A.	N.A.	N.A.	N.A.
Northwest Territories	22	0	6	0	6	2	21	0	21	0	0	0	0	0	21	0	21	0	21	3	21	2
Nunavut	0	0	0	0	0	0	0	0	0	0	0	0	0	0	0	0	0	0	0	0	0	0
Territories	34	0	6	0	6	5	33	1	21	0	0	0	0	0	21	0	21	0	21	3	21	2
CANADA	10535	28	776	1158	1962	994	9089	629	4345	102	15	16	35	0	4323	65	4189	155	2888	231	3364	206

Specimens from Yukon (YT), Northwest Territories (NT) and Nunavut (NU) are sent to reference laboratories in other provinces and reported results reflect specimens identified as originating from YT, NT or NU. Delays in the reporting of data may cause data to change retrospectively.

Table 2: Respiratory Virus Detections/Isolations for the period August 27, 2017 - December 30, 2017 (Reporting Weeks / Code hebdomadaire 201735-201752)

Reporting Laboratory	Flu Tested	A(H1N1)pdm09 Positive	A(H3) Positive	A(UnS) Positive	Total Flu A Positive	Total Flu B Positive	RSV Tested	RSV Positive	PIV Tested	PIV 1 Positive	PIV 2 Positive	PIV 3 Positive	PIV 4 Positive	Other PIV Positive	Adeno Tested	Adeno Positive	hMPV Tested	hMPV Positive	Entero/Rhino Tested	Entero/Rhino Positive	Coron Tested	Coron Positive
Newfoundland	832	0	3	6	9	5	832	7	832	54	3	17	0	0	832	16	833	18	832	111	N.A.	N.A.
Prince Edward Island	235	0	29	0	29	11	243	6	28	0	0	2	0	0	28	1	28	0	28	5	28	0
Nova Scotia	659	0	0	39	39	2	689	36	240	3	1	1	0	0	240	3	240	2	240	52	240	0
New Brunswick	2354	0	61	169	230	22	2150	18	863	19	14	2	9	0	863	23	863	17	863	170	863	2
Atlantic	4080	0	93	214	307	40	3894	67	1963	76	18	20	11	0	1963	43	1964	37	1963	338	1131	2
Région Nord-Est	2232	0	0	241	241	75	2053	92	0	0	0	0	0	0	0	0	0	0	N.A.	N.A.	0	0
Québec-Chaudière-Appalaches	2883	0	0	220	220	117	3119	245	1411	24	1	0	16	0	1449	52	1230	2	N.A.	N.A.	1171	2
Centre-du-Québec	2746	0	0	174	174	121	2261	258	0	0	0	0	0	0	0	0	0	0	N.A.	N.A.	0	0
Montréal-Laval	13437	0	0	753	753	291	11832	826	8132	145	22	50	29	0	8281	353	7866	56	N.A.	N.A.	7312	128
Ouest du Québec	2440	0	0	179	179	120	1031	105	0	0	0	0	0	0	0	0	0	0	N.A.	N.A.	0	0
Montérégie	1805	0	0	162	162	50	1805	141	0	0	0	0	0	0	0	0	0	0	N.A.	N.A.	0	0
Province of Québec	25543	0	0	1729	1729	774	22101	1667	9543	169	23	50	45	0	9730	405	9096	58	N.A.	N.A.	8483	130
Ottawa P.H.L.	225	1	9	6	16	3	188	0	188	1	0	0	0	0	188	1	183	0	20	6	10	1
CHEO - Ottawa	2530	0	0	87	87	38	2529	118	360	6	0	0	6	0	386	8	442	5	386	104	386	5
Kingston P.H.L.	348	0	24	8	32	2	296	2	296	7	0	0	1	0	296	5	277	0	64	7	22	0
UHN / Mount Sinai Hospital	3672	0	0	70	70	37	3672	102	324	5	1	0	7	0	0	0	302	4	N.A.	N.A.	N.A.	N.A.
P.H.O.L. - Toronto	5318	32	200	11	243	66	4932	106	4932	78	6	7	1	0	4932	45	4768	22	457	48	234	5
Sick Kids Hospital - Toronto	1107	4	9	1	14	6	1107	123	1107	28	2	5	23	0	1107	26	1107	49	1107	321	1107	37
Sunnybrook & Women's College HSC	1025	0	22	1	23	14	1025	18	1025	14	8	2	3	0	1025	0	1025	11	1025	145	1025	17
Sault Ste. Marie P.H.L.	140	0	4	2	6	0	129	1	129	1	0	0	1	0	129	0	124	0	18	3	12	0
Timmins P.H.L.	102	2	1	2	5	0	93	0	93	0	0	0	0	0	93	0	87	0	12	1	2	0
St. Joseph's - London	1166	0	0	40	40	78	1166	103	498	17	1	0	8	0	498	15	424	3	315	97	288	3
London P.H.L.	1183	2	43	26	71	77	994	29	994	21	2	2	3	0	994	5	945	10	141	21	63	0
Orillia P.H.L.	418	0	32	11	43	11	320	6	320	8	0	2	0	0	320	4	318	1	20	4	11	0
Thunder Bay P.H.L.	265	0	22	12	34	1	212	0	212	3	1	2	0	0	212	0	209	2	6	0	3	0
Sudbury P.H.L.	383	1	18	2	21	1	355	3	355	4	0	0	0	0	354	2	333	0	36	1	13	0
Hamilton P.H.L.	1167	6	21	15	42	17	1089	62	1089	25	2	2	3	0	1089	13	1041	18	125	21	64	2
Peterborough P.H.L.	712	0	10	9	19	13	650	21	650	15	0	1	0	0	650	3	647	5	47	12	44	2
Province of Ontario	19761	48	415	303	766	364	18757	694	12572	233	23	23	56	0	12273	127	12232	130	3779	791	3284	72
Manitoba	3681	6	185	144	335	18	3565	41	2251	49	6	0	3	0	2251	40	1112	49	2251	277	1112	15
Regina	4791	15	391	23	429	77	4791	40	4791	296	53	4	18	0	4791	106	4791	161	4791	1374	4791	103
Saskatoon	2175	0	0	168	168	38	2175	27	2074	29	2	6	1	0	2175	34	2175	25	2175	352	2175	13
Province of Saskatchewan	6966	15	391	191	597	115	6966	67	6865	325	55	10	19	0	6966	140	6966	186	6966	1726	6966	116
Province of Alberta	17335	60	2884	972	3916	1219	13996	0	13996	392	98	59	163	0	13996	218	13996	476	13996	2524	13996	386
Prairies	27982	81	3460	1307	4848	1352	24527	108	23112	766	159	69	185	0	23213	398	22074	711	23213	4527	22074	517
British Columbia	6313	79	318	148	545	428	6313	115	3538	117	32	16	62	0	3538	32	3538	47	2752	856	2752	50
Yukon	148	0	5	0	5	29	148	6	N.A.	N.A.	N.A.	N.A.	N.A.	N.A.	N.A.	N.A.	N.A.	N.A.	N.A.	N.A.	N.A.	N.A.
Northwest Territories	262	0	73	0	73	3	259	0	259	4	0	0	9	0	259	2	259	14	259	46	259	12
Nunavut	192	0	13	0	13	1	179	1	180	5	1	8	0	0	179	10	179	2	51	25	47	1
Territories	602	0	91	0	91	33	586	7	439	9	1	8	9	0	438	12	438	16	310	71	306	13
CANADA	84281	208	4377	3701	8286	2991	76178	2658	51167	1370	256	186	368	0	51155	1017	49342	999	32017	6583	38030	784

Specimens from YT, NT and NU are sent to reference laboratories in other provinces and reported results reflect specimens identified as originating from YT, NT or NU.

Delays in the reporting of data may cause data to change retrospectively.

Due to reporting delays, the sum of weekly report totals do not add up to cumulative totals.

Figure 1: Number positive laboratory tests for other respiratory viruses by report week, Canada, 2017-18

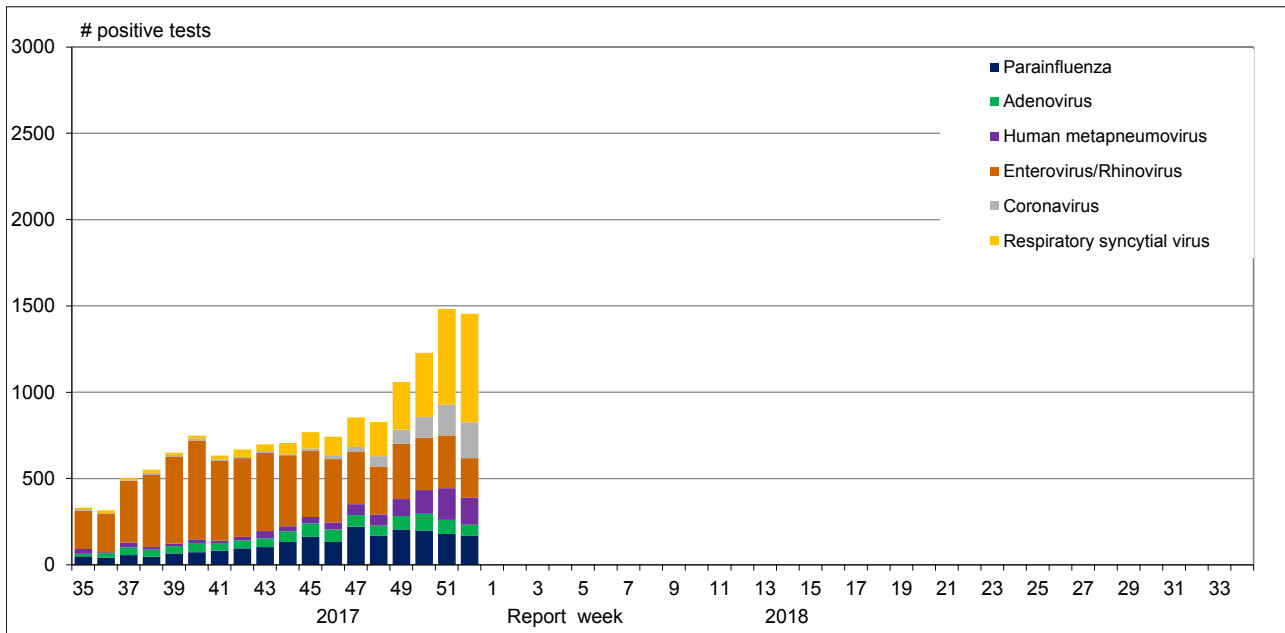


Figure 2: Positive Influenza Tests (%) in Canada by Region by Week of Report

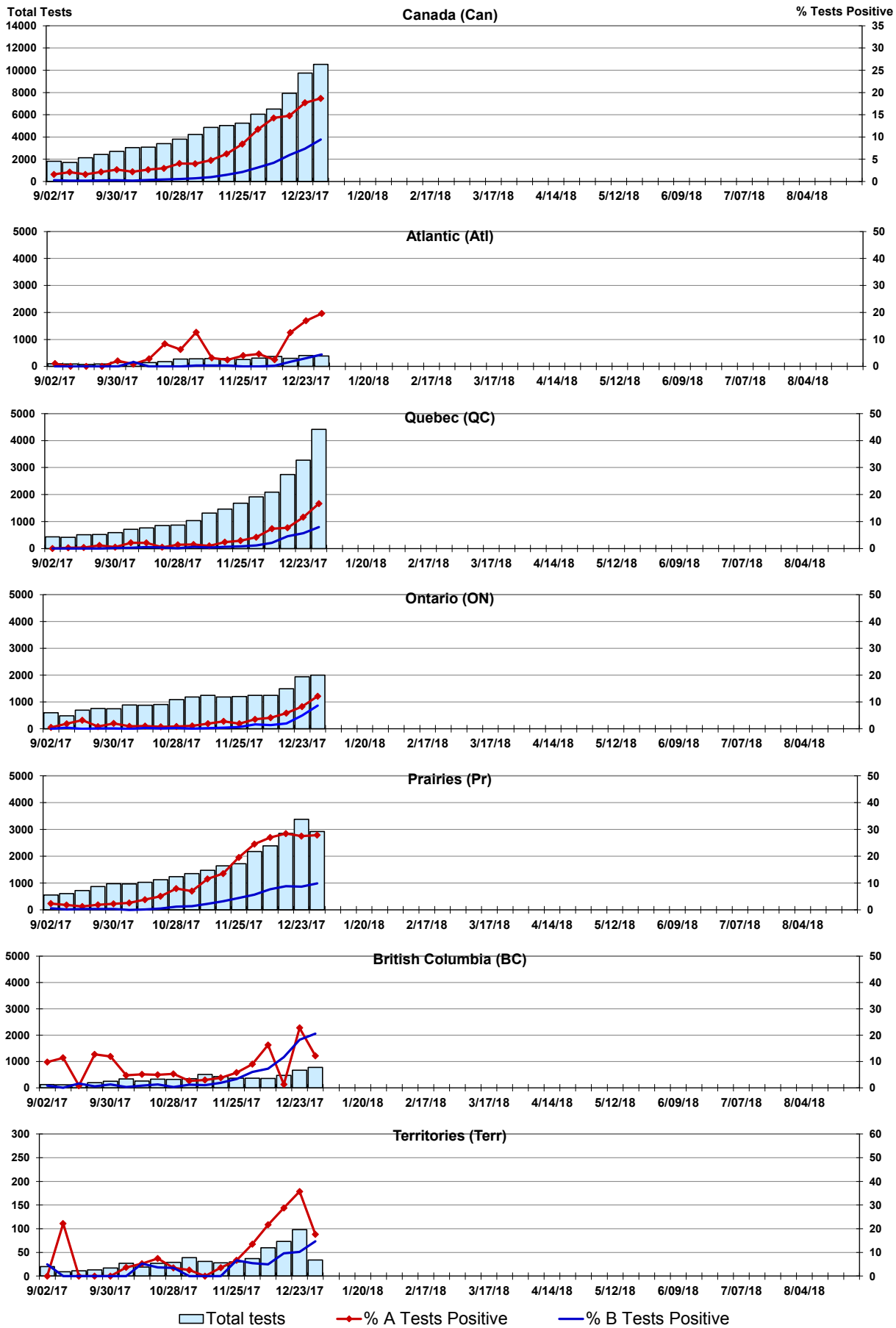


Figure 3: Positive Respiratory syncytial virus (RSV) Tests (%) in Canada by Region by Week of Report

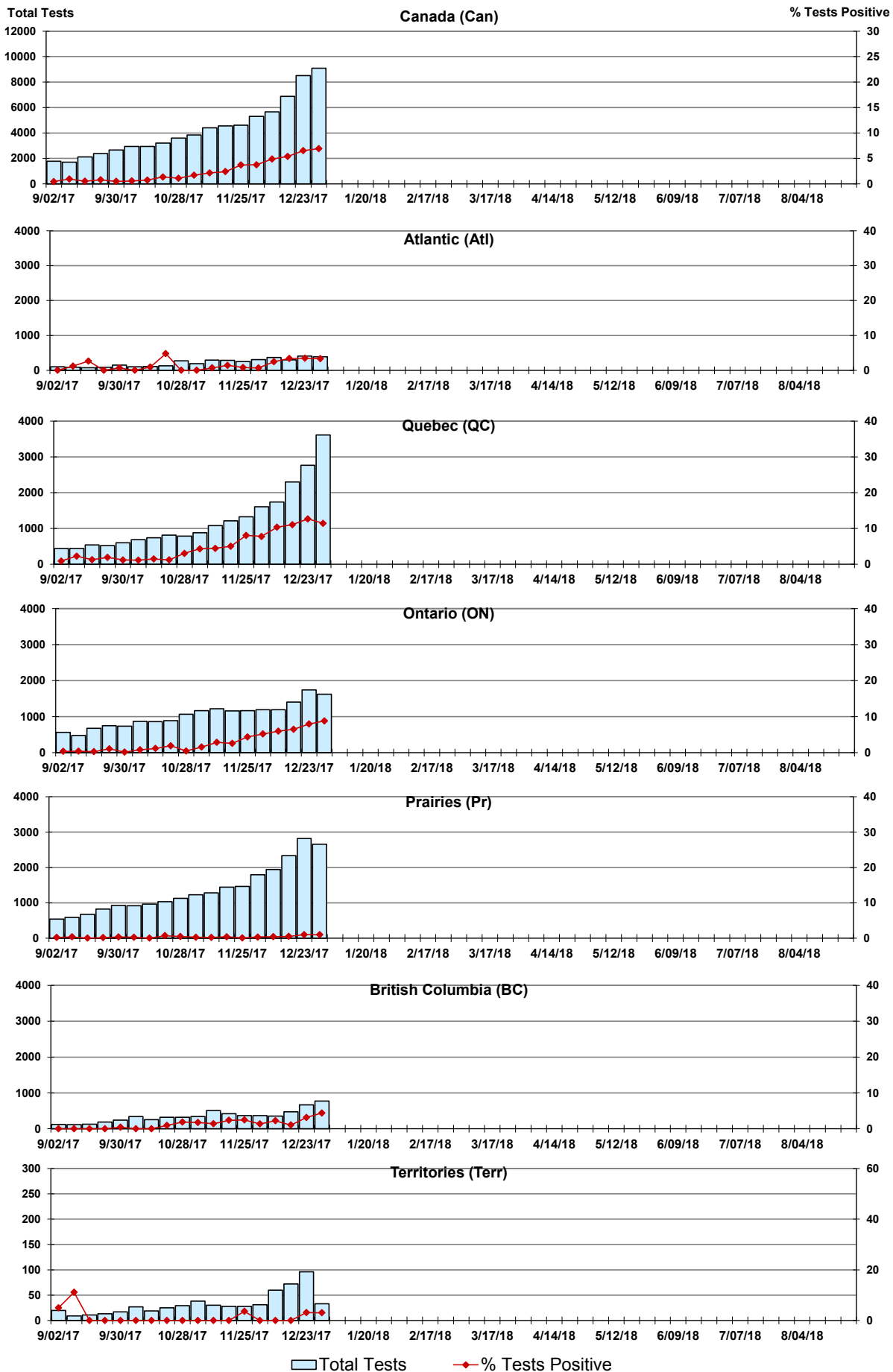


Figure 4: Positive Parainfluenza (PIV) Tests (%) in Canada by Region by Week of Report

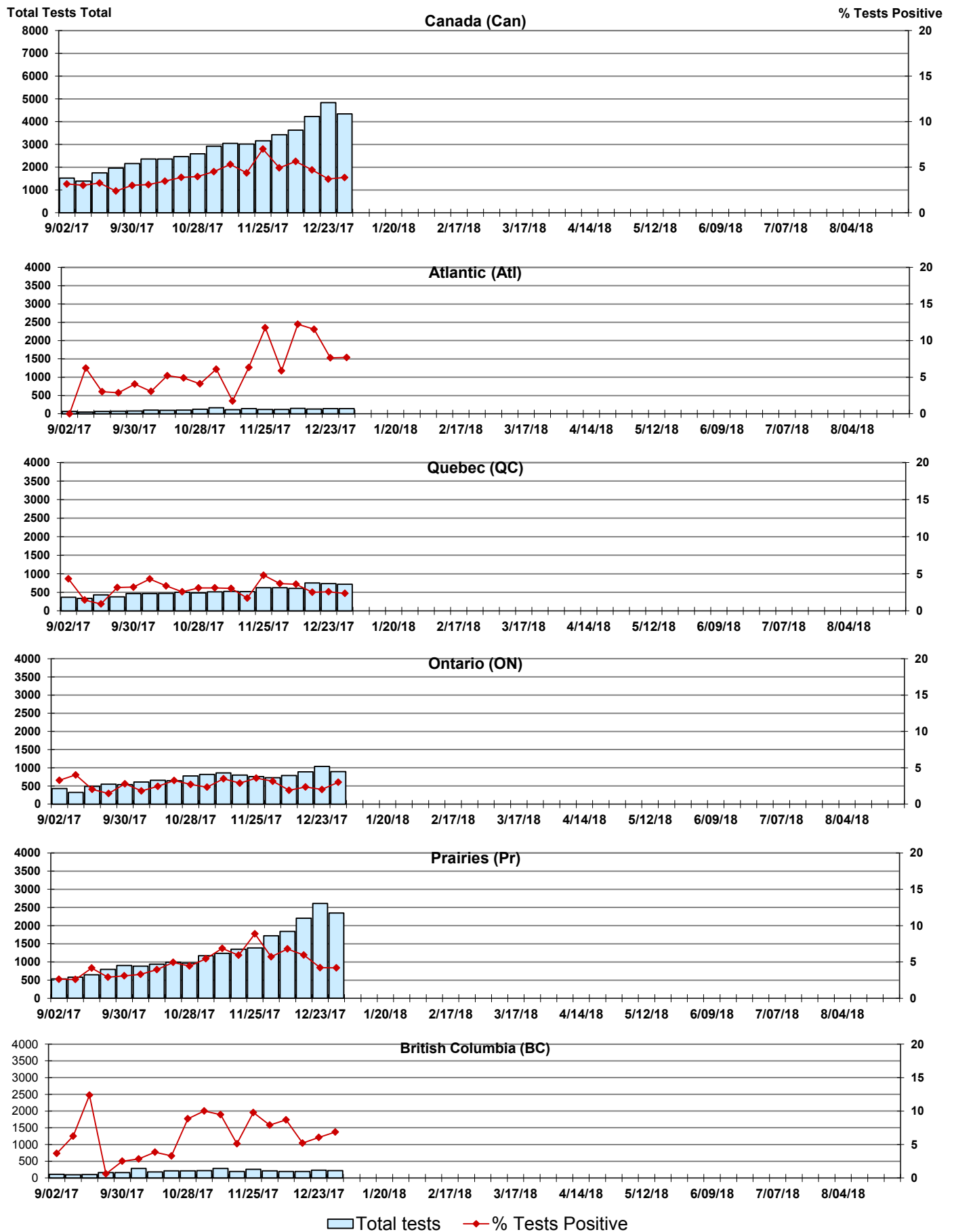


Figure 5: Positive Adenovirus (adeno) Tests (%) in Canada by Region by Week of Report

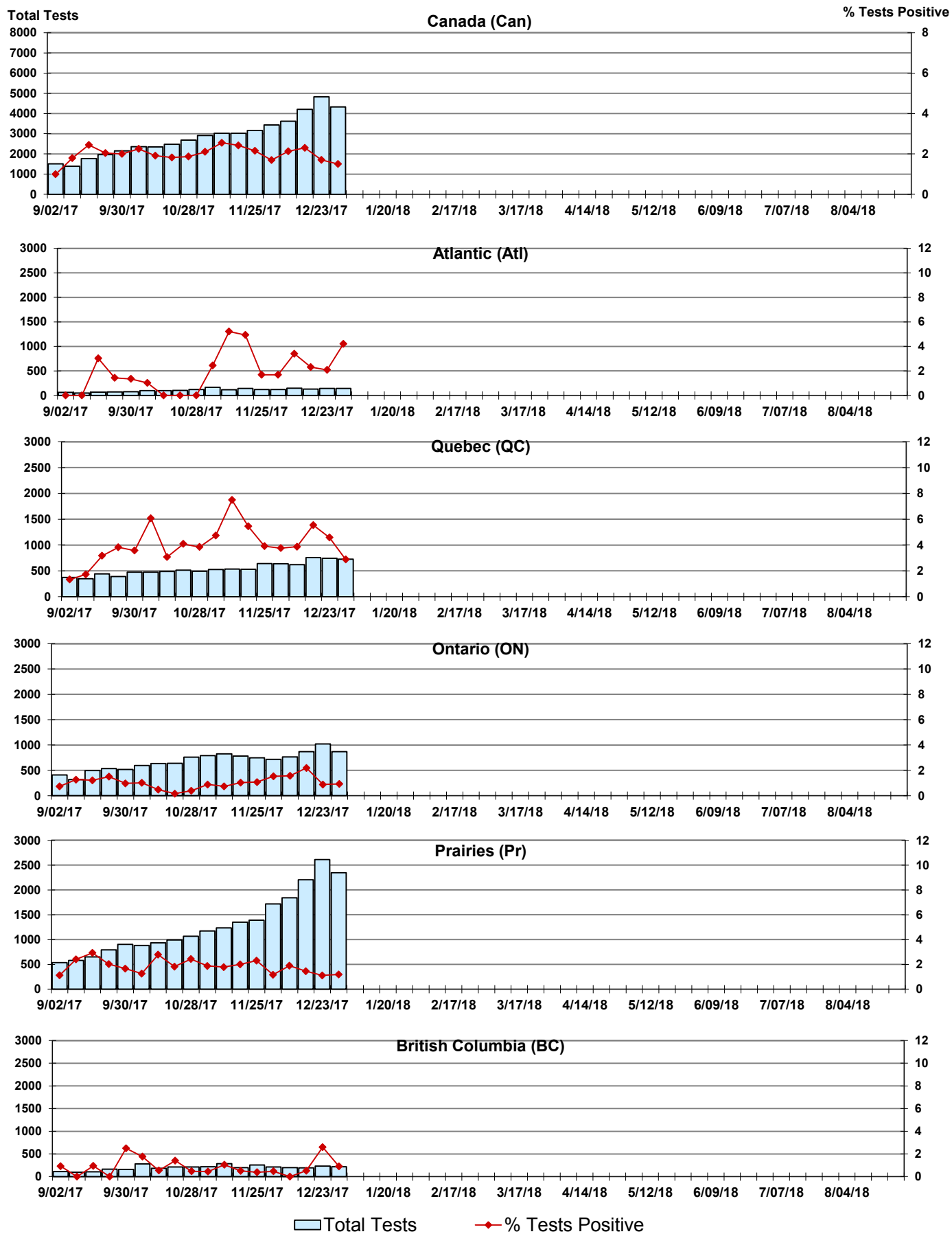


Figure 6: Positive human metapneumovirus (hMPV) Tests (%) in Canada by Region by Week of Report

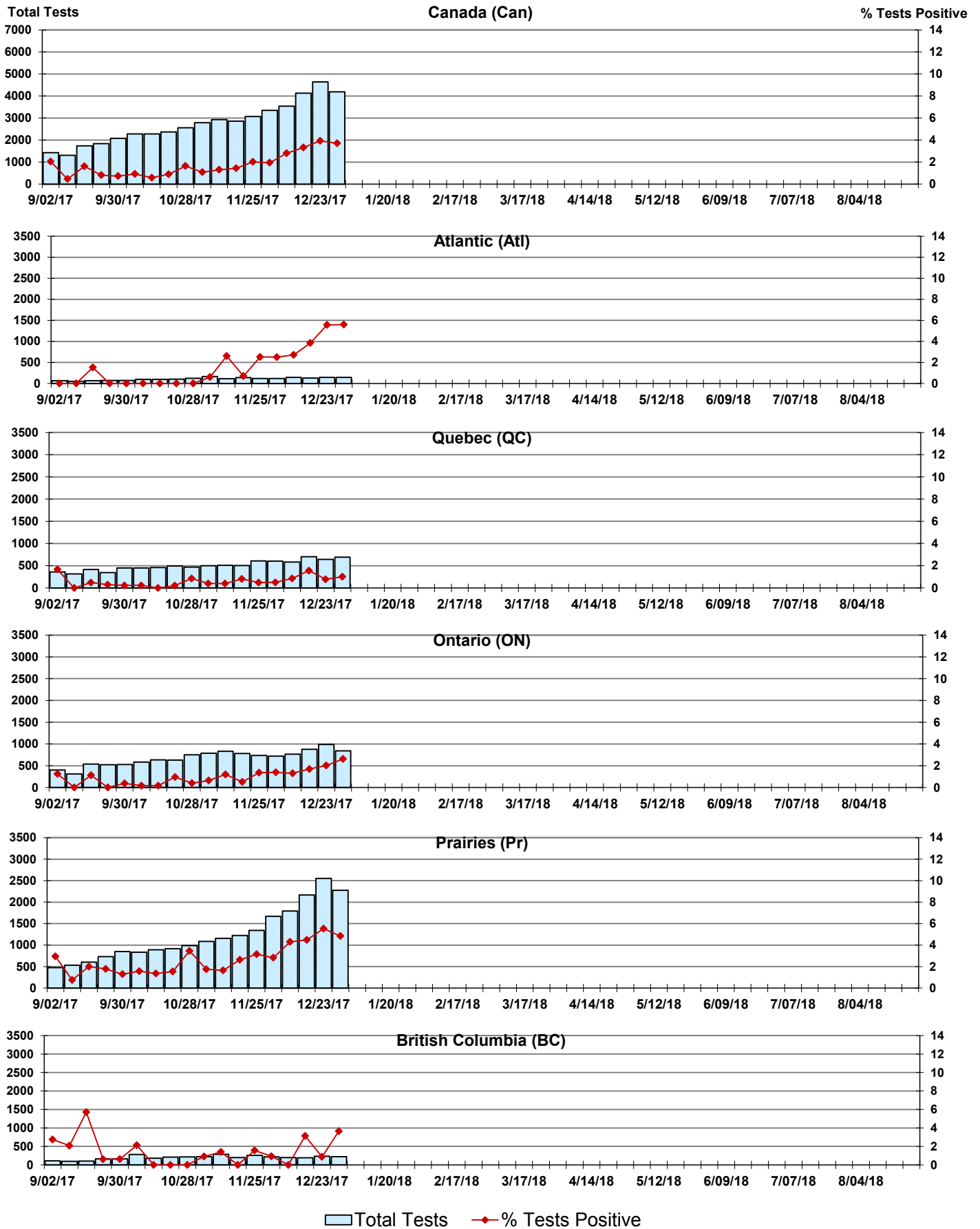


Figure 7: Positive Enterovirus/Rhinovirus (entero/rhino) Tests (%) in Canada by Region by Week of Report

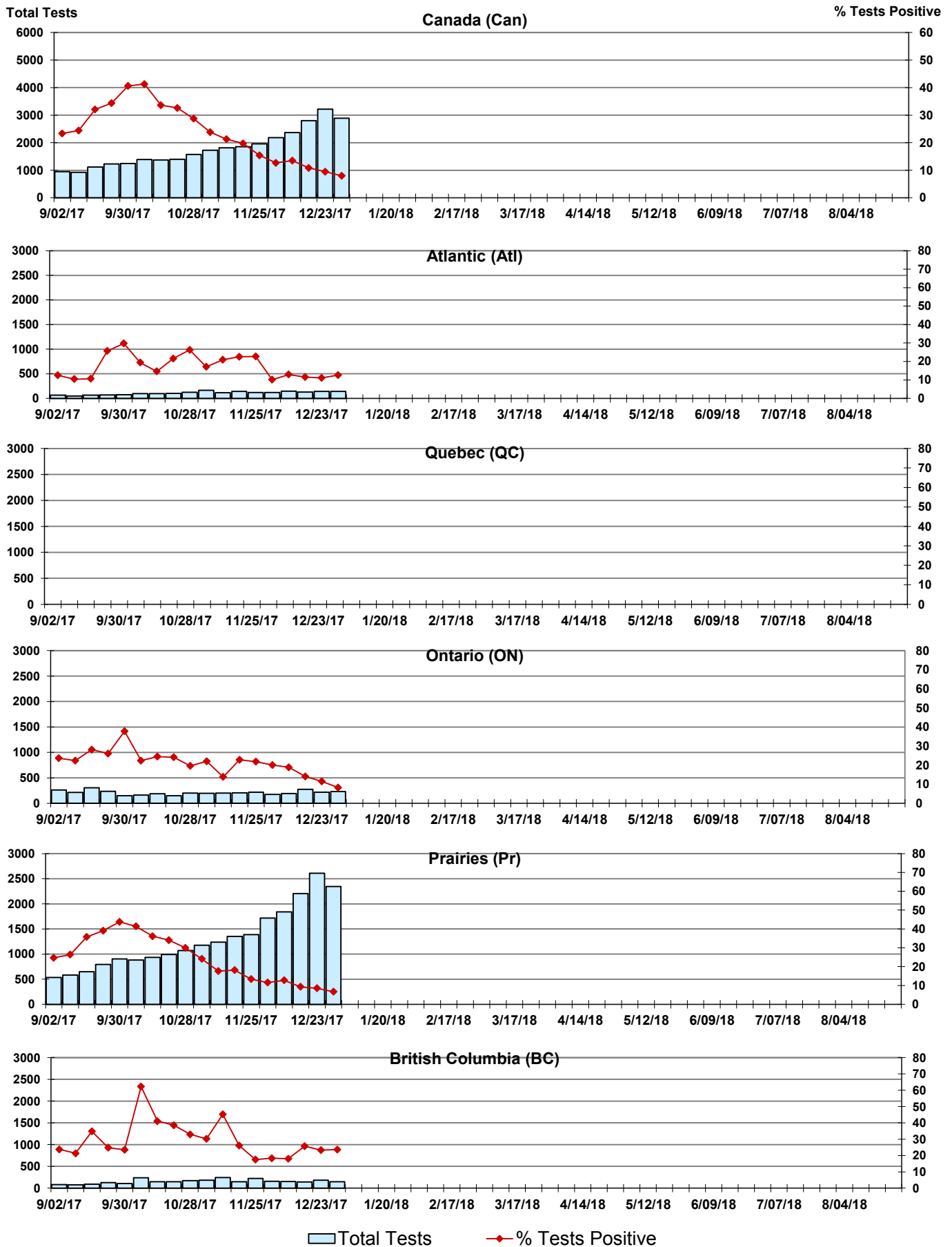
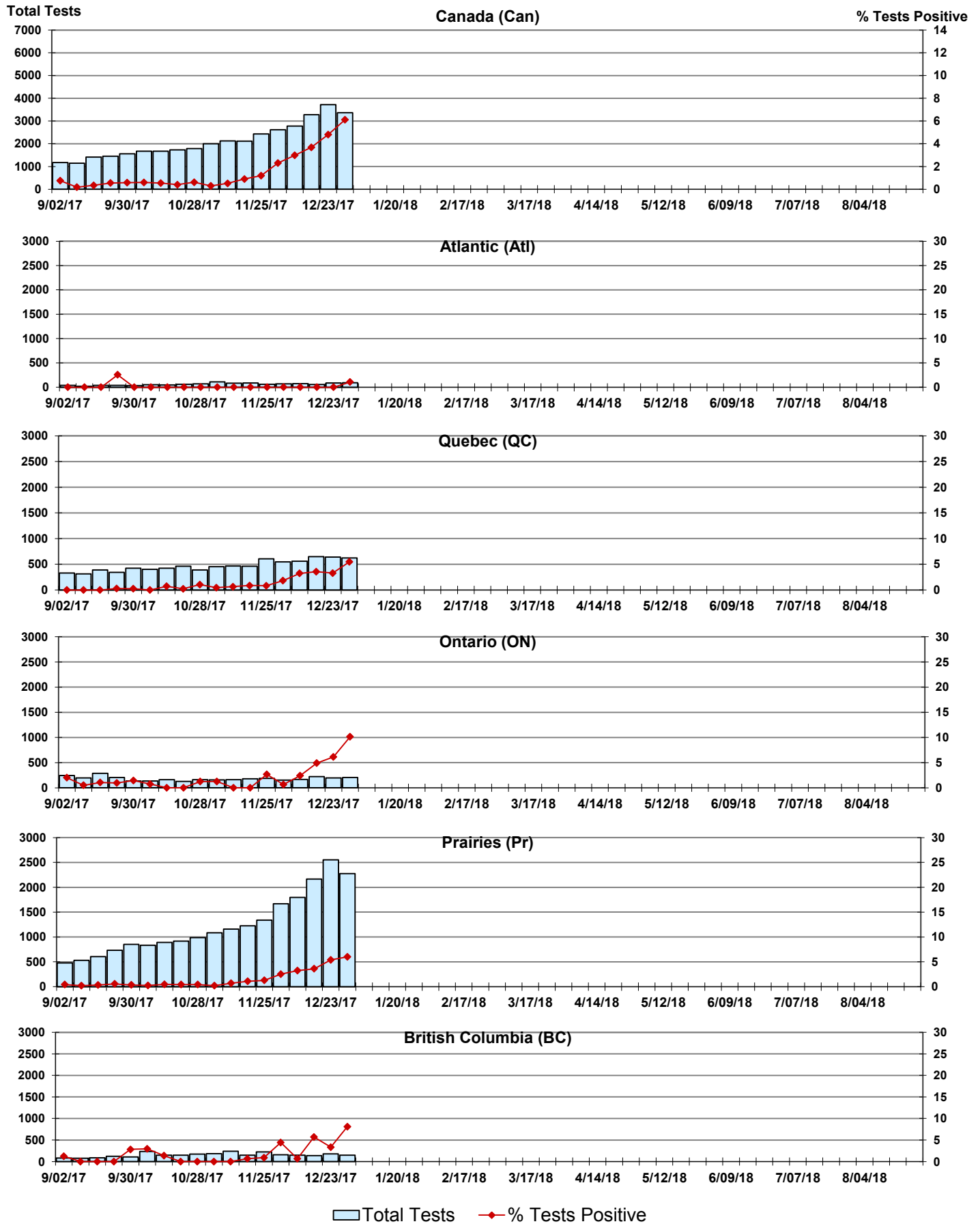


Figure 8: Positive Coronavirus (coron) Tests (%) in Canada by Region by Week of Report



Abbreviations:

A(H1N1)pdm09: Influenza A(H1N1)pdm09

A(H3): Influenza A(H3N2)

A (UnS): Influenza A (Unsubtyped)

Adeno: Adenovirus

CHEO: Children's Hospital of Eastern Ontario

Coron: Coronavirus

Entero: Enterovirus

hMPV: human metapneumovirus

HSC: Health Sciences Centre

N.A.: Not Applicable

P.H.L.: Public Health Laboratory

P.H.O.L.: Public Health Ontario Laboratory

PIV: Parainfluenza

Rhino: Rhinovirus

RSV: Respiratory syncytial virus

UHN: University Health Network

Notes:

Specimens from Yukon (YT), Northwest Territories (NT) and Nunavut (NU) are sent to reference laboratories in other provinces. Results reported for the Territories reflect the number of specimens that are identified as originating from YT, NT or NU.

Delays in the reporting of data may cause data to change retrospectively.

Due to reporting delays, the sum of weekly report totals do not add up to cumulative totals.