

Respiratory Virus Detections in Canada

Respiratory Virus Report, Week 03 - ending January 20, 2018

The Respiratory Virus Detection Surveillance System collects data from select laboratories across Canada on the number of tests performed and the number of tests positive for influenza and other respiratory viruses. Data are reported on a weekly basis year-round to the Centre for Immunization and Respiratory Infectious Diseases (CIRID), Public Health Agency of Canada. These data are also summarized in the weekly FluWatch report.

Table 1: Respiratory Virus Detections/Isolations for the week ending January 20, 2018 (Reporting Week 201803)

Reporting Laboratory	Flu Tested	A(H1N1)pdm09 Positive	A(H3) Positive	A(UnS) Positive	Total Flu A Positive	Total Flu B Positive	RSV Tested	RSV Positive	PIV Tested	PIV 1 Positive	PIV 2 Positive	PIV 3 Positive	PIV 4 Positive	Other PIV Positive	Adeno Tested	Adeno Positive	hMPV Tested	hMPV Positive	Entero/Rhino Tested	Entero/Rhino Positive	Coron Tested	Coron Positive
Newfoundland	178	0	0	9	9	2	178	8	178	8	1	3	0	0	178	2	178	18	178	14	N.A.	N.A.
Prince Edward Island	90	0	5	0	5	27	91	8	1	0	0	0	0	0	1	0	1	0	1	0	1	0
Nova Scotia	207	0	0	40	40	13	207	27	7	0	0	0	0	0	7	0	7	0	7	0	7	2
New Brunswick	440	0	0	85	85	68	440	22	136	0	1	0	0	0	136	2	136	6	136	5	136	3
Atlantic	915	0	5	134	139	110	916	65	322	8	2	3	0	0	322	4	322	24	322	19	144	5
Région Nord-Est	700	0	0	105	105	72	602	43	0	0	0	0	0	0	0	0	0	0	N.A.	N.A.	0	0
Québec-Chaudière-Appalaches	836	0	0	208	208	93	855	101	88	2	0	0	1	0	89	2	73	0	N.A.	N.A.	73	0
Centre-du-Québec	1274	0	0	240	240	194	1031	83	0	0	0	0	0	0	0	0	0	0	N.A.	N.A.	0	0
Montréal-Laval	2160	0	0	335	335	257	1678	153	788	6	0	1	2	0	794	18	776	18	N.A.	N.A.	705	39
Ouest du Québec	693	0	0	137	137	87	397	45	0	0	0	0	0	0	0	0	0	0	N.A.	N.A.	0	0
Montérégie	571	0	0	94	94	73	571	59	0	0	0	0	0	0	0	0	0	0	N.A.	N.A.	0	0
Province of Québec	6234	0	0	1119	1119	776	5134	484	876	8	0	1	3	0	883	20	849	18	N.A.	N.A.	778	39
Ottawa P.H.L.	64	0	11	13	24	7	0	0	0	0	0	0	0	0	0	0	0	0	0	0	0	0
CHEO - Ottawa	348	0	0	44	44	33	348	48	17	0	0	0	0	0	17	1	17	1	17	2	17	2
Kingston P.H.L.	72	0	4	5	9	14	9	0	9	0	0	0	0	0	9	0	6	0	4	0	0	0
UHN / Mount Sinai Hospital	515	0	0	41	41	48	515	31	13	0	0	0	0	0	0	0	13	0	N.A.	N.A.	N.A.	N.A.
P.H.O.L. - Toronto	734	4	113	31	148	86	402	23	402	5	0	0	0	0	402	3	391	8	11	0	0	0
Sick Kids Hospital - Toronto	126	3	4	7	14	14	72	8	72	0	0	0	0	0	72	2	72	8	72	6	72	7
Sunnybrook & Women's College HSC	116	0	6	0	6	18	116	5	116	0	0	0	0	0	116	0	116	1	116	1	116	7
Sault Ste. Marie P.H.L.	41	0	2	10	12	3	3	0	3	1	0	0	0	0	3	0	3	0	0	0	0	0
Timmins P.H.L.	21	0	7	2	9	2	3	0	3	0	0	0	0	0	3	0	3	0	0	0	0	0
St. Joseph's - London	250	0	0	16	16	60	250	17	39	0	0	0	0	0	39	2	39	2	16	1	16	0
London P.H.L.	318	0	39	15	54	69	179	8	179	2	0	0	0	0	179	2	179	0	0	0	0	0
Orillia P.H.L.	101	0	8	4	12	5	8	1	8	0	0	0	0	0	8	0	6	0	2	0	0	0
Thunder Bay P.H.L.	120	0	30	8	38	3	20	0	20	0	0	0	0	0	20	0	20	0	0	0	0	0
Sudbury P.H.L.	45	0	3	0	3	4	9	0	9	0	0	0	0	0	9	0	8	0	1	0	0	0
Hamilton P.H.L.	181	0	14	9	23	26	98	4	98	1	1	0	0	0	98	0	97	2	1	0	0	0
Peterborough P.H.L.	117	1	6	2	9	12	42	0	42	1	0	0	0	0	42	0	42	0	0	0	0	0
Province of Ontario	3169	8	247	207	462	404	2074	145	1030	10	1	0	0	0	1017	10	1012	22	240	10	221	16
Manitoba	631	0	19	122	141	19	627	42	108	2	3	1	0	0	108	0	59	9	108	4	59	14
Regina	0	0	0	0	0	0	0	0	0	0	0	0	0	0	0	0	0	0	0	0	0	0
Saskatoon	215	0	0	18	18	14	215	6	215	0	1	0	0	0	215	0	215	3	215	2	215	2
Province of Saskatchewan	215	0	0	18	18	14	215	6	215	0	1	0	0	0	215	0	215	3	215	2	215	2
Province of Alberta	1491	4	143	54	201	173	1120	0	1120	31	9	3	12	0	1120	17	1120	80	1120	65	1120	88
Prairies	2337	4	162	194	360	206	1962	48	1443	33	13	4	12	0	1443	17	1394	92	1443	71	1394	104
British Columbia	1462	54	269	87	410	330	1462	9	416	5	0	2	3	0	416	0	416	12	259	25	259	35
Yukon	22	1	3	6	10	2	22	0	N.A.	N.A.	N.A.	N.A.	N.A.	N.A.	N.A.	N.A.	N.A.	N.A.	N.A.	N.A.	N.A.	N.A.
Northwest Territories	40	1	10	0	11	6	40	0	40	0	0	0	0	0	40	0	40	3	40	4	40	0
Nunavut	14	0	5	0	5	1	14	0	14	0	0	0	0	0	14	0	14	2	2	0	2	0
Territories	76	2	18	6	26	9	76	0	54	0	0	0	0	0	54	0	54	5	42	4	42	0
CANADA	14193	68	701	1747	2516	1835	11624	751	4141	64	16	10	18	0	4135	51	4047	173	2306	129	2838	199

Specimens from Yukon (YT), Northwest Territories (NT) and Nunavut (NU) are sent to reference laboratories in other provinces and reported results reflect specimens identified as originating from YT, NT or NU.

Delays in the reporting of data may cause data to change retrospectively.

Table 2: Respiratory Virus Detections/Isolations for the period August 27, 2017 - January 20, 2018 (Reporting Weeks / Code hebdomadaire 201735-201803)

Reporting Laboratory	Flu Tested	A(H1N1)pdm09 Positive	A(H3) Positive	A(UnS) Positive	Total Flu A Positive	Total Flu B Positive	RSV Tested	RSV Positive	PIV Tested	PIV 1 Positive	PIV 2 Positive	PIV 3 Positive	PIV 4 Positive	Other PIV Positive	Adeno Tested	Adeno Positive	hMPV Tested	hMPV Positive	Entero/Rhino Tested	Entero/Rhino Positive	Coron Tested	Coron Positive
Newfoundland	1256	0	3	39	42	19	1256	23	1256	78	6	26	0	0	1256	20	1257	61	1256	136	N.A.	N.A.
Prince Edward Island	441	2	45	0	47	66	452	26	34	0	0	2	0	0	34	1	34	0	34	5	34	0
Nova Scotia	1197	0	0	152	152	30	1209	101	278	4	1	1	0	0	278	4	278	3	278	53	278	2
New Brunswick	3538	0	84	465	549	125	3093	50	1230	24	19	2	10	0	1230	26	1230	30	1230	192	1230	18
Atlantic	6432	2	132	656	790	240	6010	200	2798	106	26	29	12	0	2798	51	2799	94	2798	386	1542	20
Région Nord-Est	4552	0	0	654	654	264	4025	260	0	0	0	0	0	0	0	0	0	0	N.A.	N.A.	0	0
Québec-Chaudière-Appalaches	5646	0	0	836	836	381	5796	556	1712	29	1	0	18	0	1752	64	1477	4	N.A.	N.A.	1415	5
Centre-du-Québec	6540	0	0	884	884	685	5241	573	0	0	0	0	0	0	0	0	0	0	N.A.	N.A.	0	0
Montréal-Laval	20524	0	0	1882	1882	1053	17315	1313	10521	167	22	56	33	0	10686	419	10132	97	N.A.	N.A.	9444	304
Ouest du Québec	4541	0	0	567	567	328	2216	222	0	0	0	0	0	0	0	0	0	0	N.A.	N.A.	0	0
Montérégie	3372	0	0	476	476	194	3372	281	0	0	0	0	0	0	0	0	0	0	N.A.	N.A.	0	0
Province of Québec	45175	0	0	5299	5299	2905	37965	3205	12233	196	23	56	51	0	12438	483	11609	101	N.A.	N.A.	10859	309
Ottawa P.H.L.	407	1	35	28	64	37	228	1	228	3	0	0	0	0	228	2	223	0	20	6	10	1
CHEO - Ottawa	3686	0	0	250	250	140	3685	262	441	11	1	2	7	0	467	10	523	9	467	115	467	19
Kingston P.H.L.	533	0	49	20	69	26	375	8	375	8	0	0	1	0	375	5	345	1	83	7	22	0
UHN / Mount Sinai Hospital	5168	0	0	184	184	164	5168	206	384	6	1	0	8	0	0	0	362	5	N.A.	N.A.	N.A.	N.A.
P.H.O.L. - Toronto	7478	45	469	62	576	275	6389	180	6389	96	6	13	1	0	6389	57	6186	41	519	48	234	5
Sick Kids Hospital - Toronto	1454	8	22	11	41	27	1330	152	1330	28	2	5	25	0	1330	31	1330	75	1330	341	1330	59
Sunnybrook & Women's College HSC	1395	1	57	1	59	49	1395	38	1395	19	8	2	3	0	1395	0	1395	18	1395	154	1395	42
Sault Ste. Marie P.H.L.	234	0	16	13	29	3	175	1	175	3	0	0	1	0	175	0	169	1	19	3	12	0
Timmins P.H.L.	161	5	17	6	28	8	118	1	118	0	0	0	0	0	118	1	110	0	14	1	2	0
St. Joseph's - London	1922	0	0	118	118	241	1922	201	647	23	1	0	11	0	647	20	573	9	404	102	354	5
London P.H.L.	2081	3	184	48	235	273	1471	67	1471	32	2	5	3	0	1471	7	1419	11	151	21	63	0
Orillia P.H.L.	682	0	58	19	77	27	440	14	440	14	0	2	0	0	440	4	435	5	24	4	11	0
Thunder Bay P.H.L.	539	0	125	21	146	4	326	3	326	6	1	2	0	0	326	0	323	3	6	0	3	0
Sudbury P.H.L.	566	3	46	3	52	12	468	4	468	5	0	0	0	0	467	3	442	0	41	1	13	0
Hamilton P.H.L.	1684	8	61	32	101	83	1412	85	1412	28	4	4	3	0	1412	14	1363	26	137	21	64	2
Peterborough P.H.L.	1074	1	33	20	54	57	863	30	863	19	0	1	0	0	863	3	860	7	49	12	44	2
Province of Ontario	29064	75	1172	836	2083	1426	25765	1253	16462	301	26	36	63	0	16103	157	16058	211	4659	836	4024	135
Manitoba	6073	6	311	580	897	77	5909	137	2628	53	12	1	8	0	2628	40	1310	60	2628	291	1310	35
Regina	6109	27	705	35	767	195	6109	77	6109	330	62	5	23	0	6109	119	6109	246	6109	1468	6109	207
Saskatoon	3041	0	0	260	260	105	3041	66	2940	30	3	7	2	0	3041	35	3041	43	3041	365	3041	38
Province of Saskatchewan	9150	27	705	295	1027	300	9150	143	9049	360	65	12	25	0	9150	154	9150	289	9150	1833	9150	245
Province of Alberta	22018	82	3583	1187	4852	1787	17671	0	17671	469	123	66	202	0	17671	258	17671	682	17671	2716	17671	679
Prairies	37241	115	4599	2062	6776	2164	32730	280	29348	882	200	79	235	0	29449	452	28131	1031	29449	4840	28131	959
British Columbia	10398	197	846	358	1401	1322	10398	225	4609	142	36	20	71	0	4609	35	4609	86	3447	949	3447	140
Yukon	198	1	11	6	18	35	198	8	N.A.	N.A.	N.A.	N.A.	N.A.	N.A.	N.A.	N.A.	N.A.	N.A.	N.A.	N.A.	N.A.	N.A.
Northwest Territories	381	1	109	0	110	15	378	0	378	9	0	0	12	0	378	3	378	19	378	54	378	18
Nunavut	249	0	21	0	21	2	236	1	237	7	1	8	0	0	236	10	235	7	66	27	59	1
Territories	828	2	141	6	149	52	812	9	615	16	1	8	12	0	614	13	613	26	444	81	437	19
CANADA	129138	391	6890	9217	16498	8109	113680	5172	66065	1643	312	228	444	0	66011	1191	63819	1549	40797	7092	48440	1582

Specimens from YT, NT and NU are sent to reference laboratories in other provinces and reported results reflect specimens identified as originating from YT, NT or NU.

Delays in the reporting of data may cause data to change retrospectively.

Due to reporting delays, the sum of weekly report totals do not add up to cumulative totals.

Figure 1: Number positive laboratory tests for other respiratory viruses by report week, Canada, 2017-18

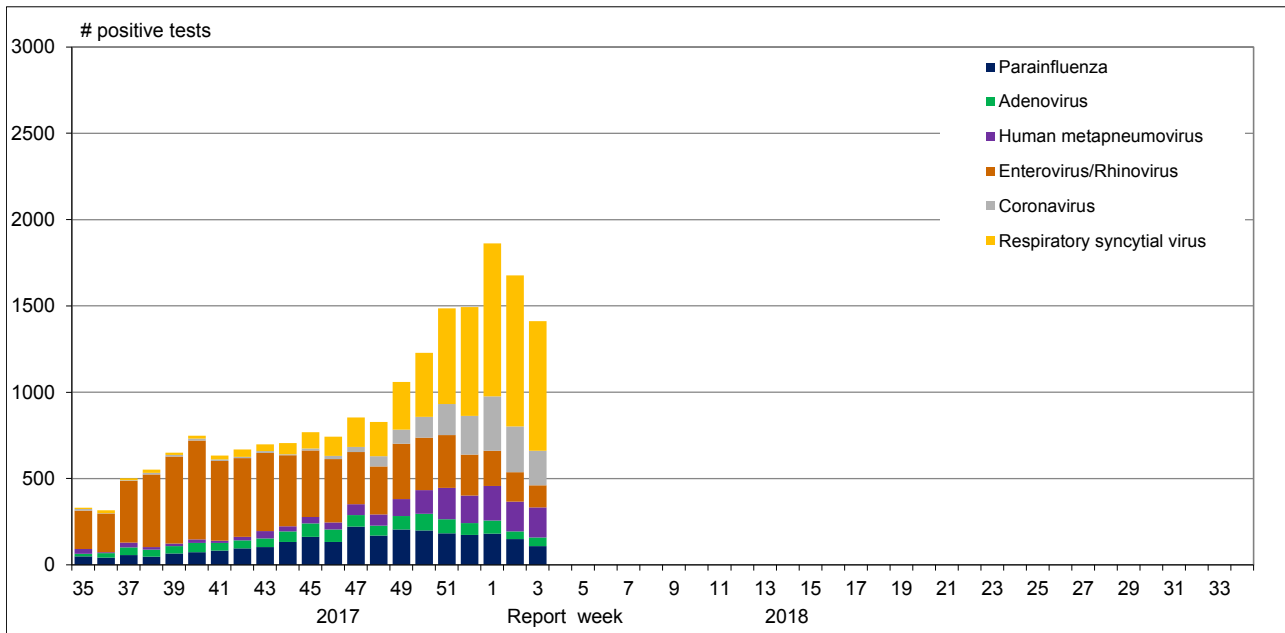


Figure 2: Positive Influenza Tests (%) in Canada by Region by Week of Report

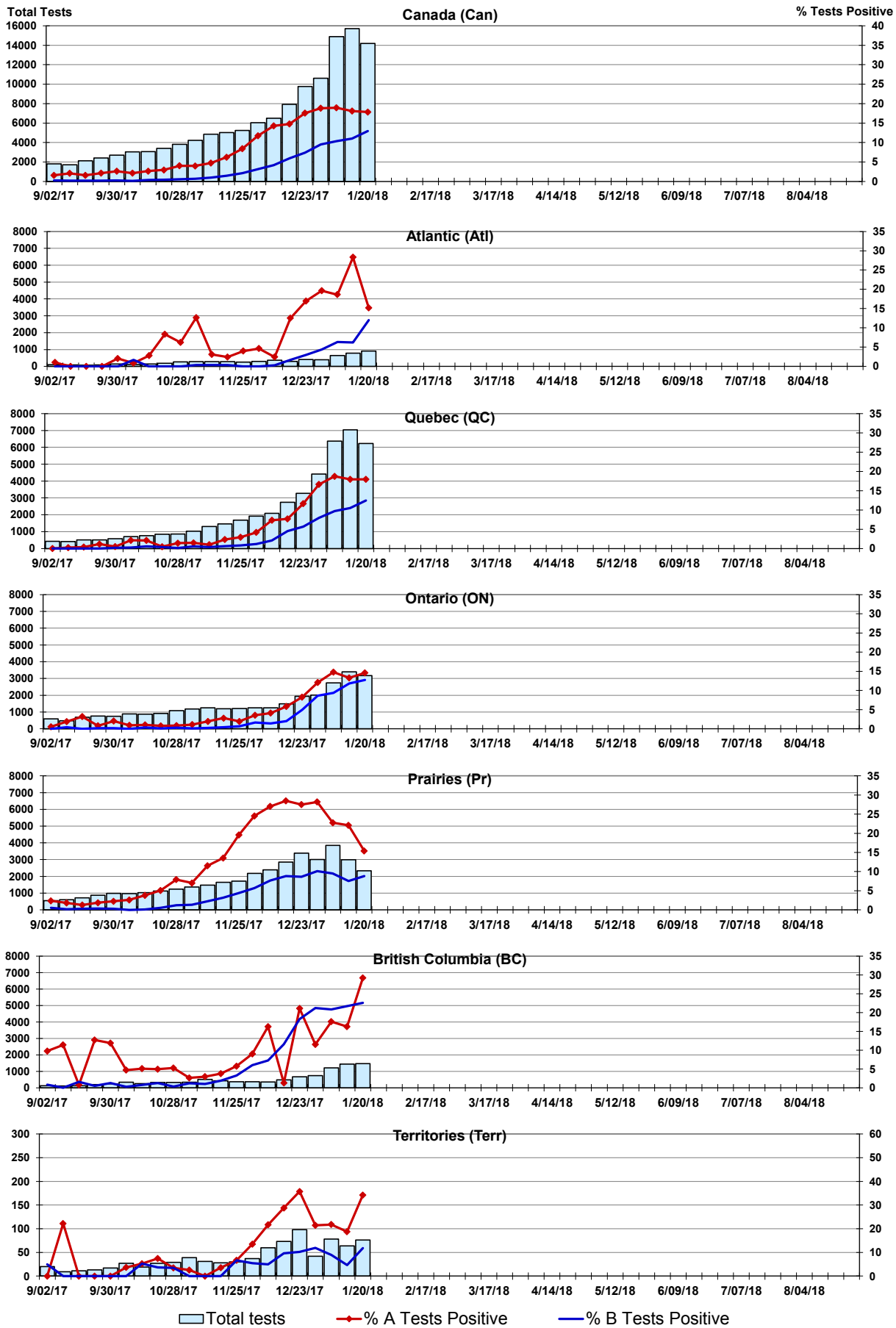


Figure 3: Positive Respiratory syncytial virus (RSV) Tests (%) in Canada by Region by Week of Report

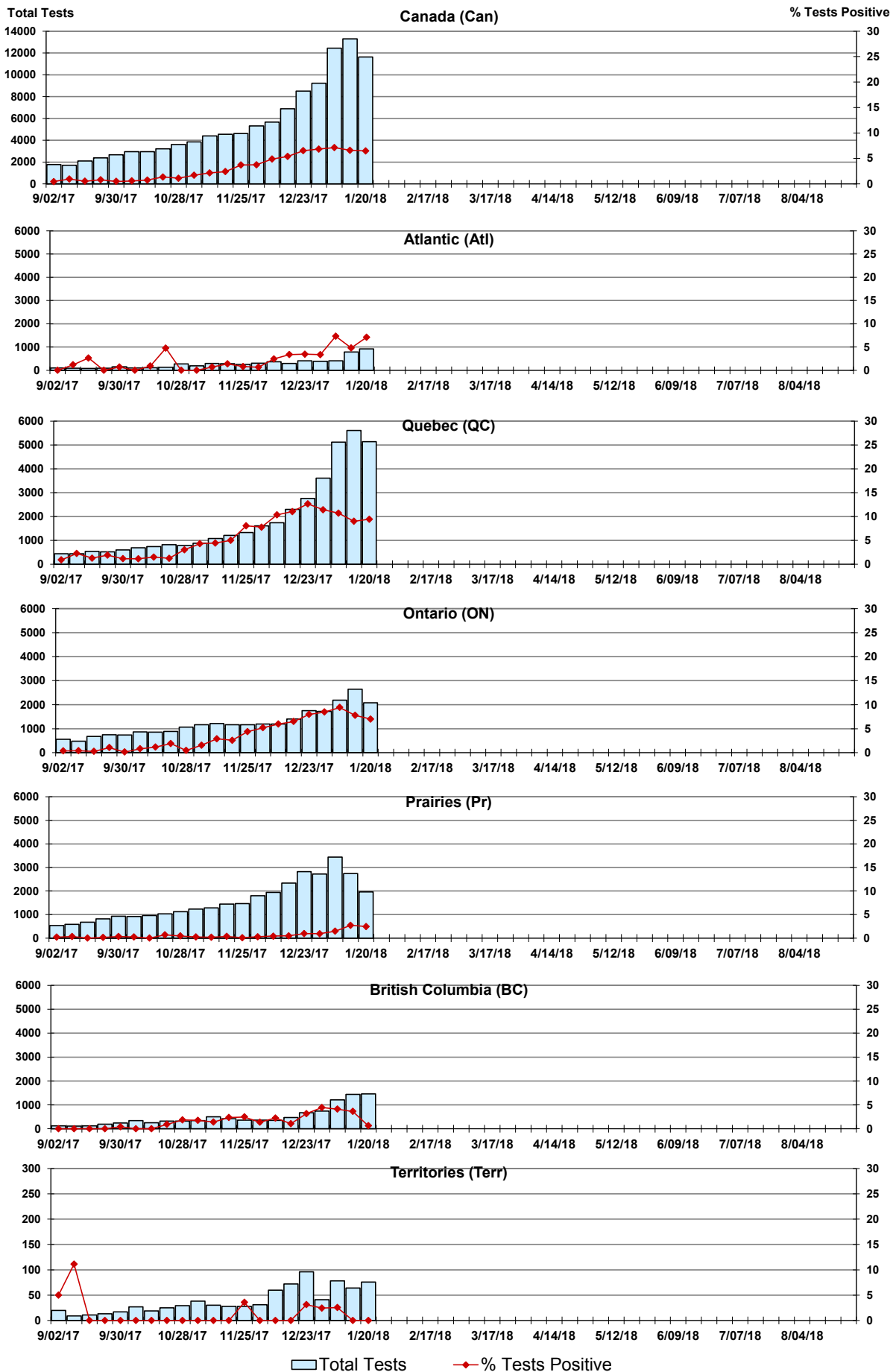


Figure 4: Positive Parainfluenza (PIV) Tests (%) in Canada by Region by Week of Report

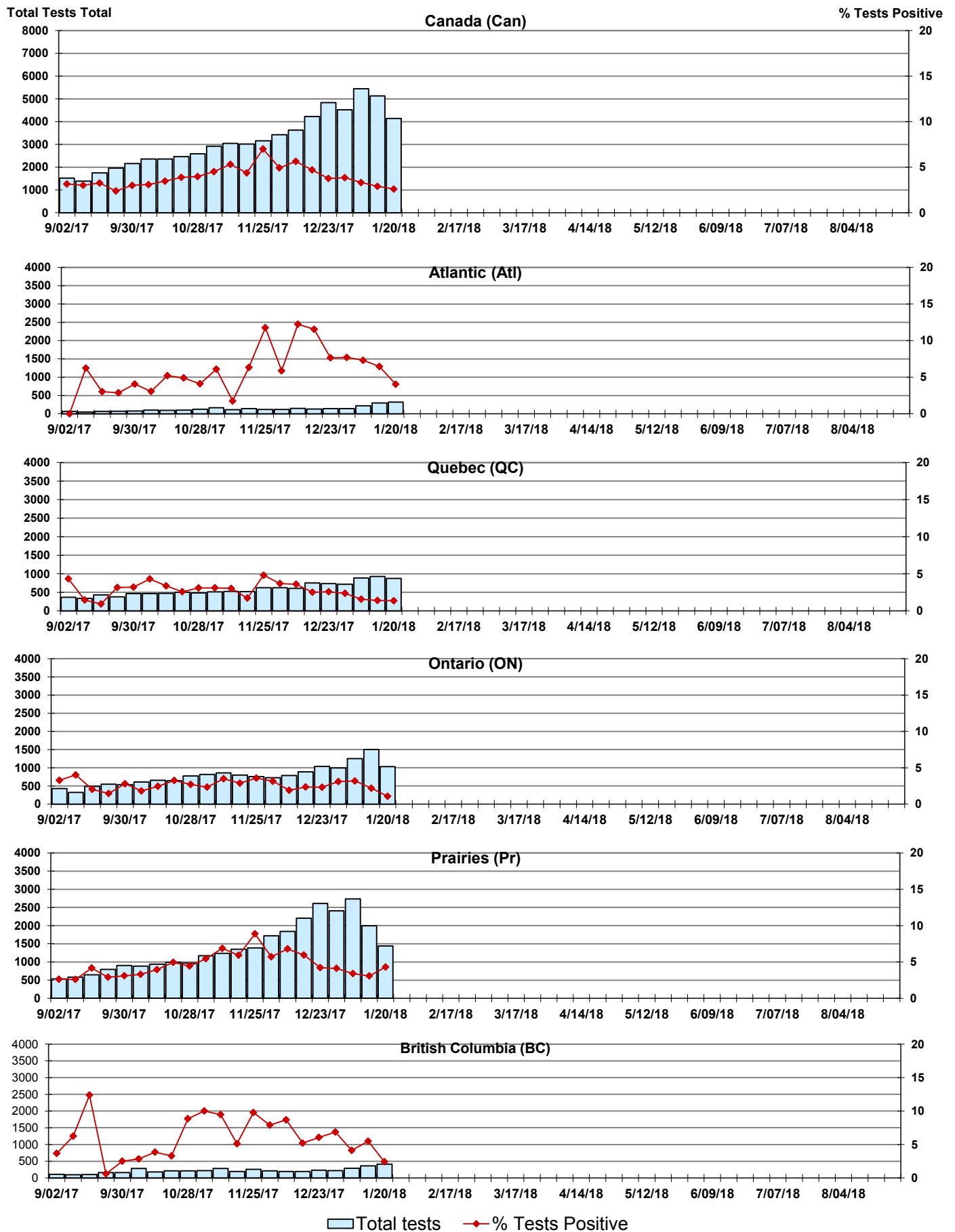


Figure 5: Positive Adenovirus (adeno) Tests (%) in Canada by Region by Week of Report

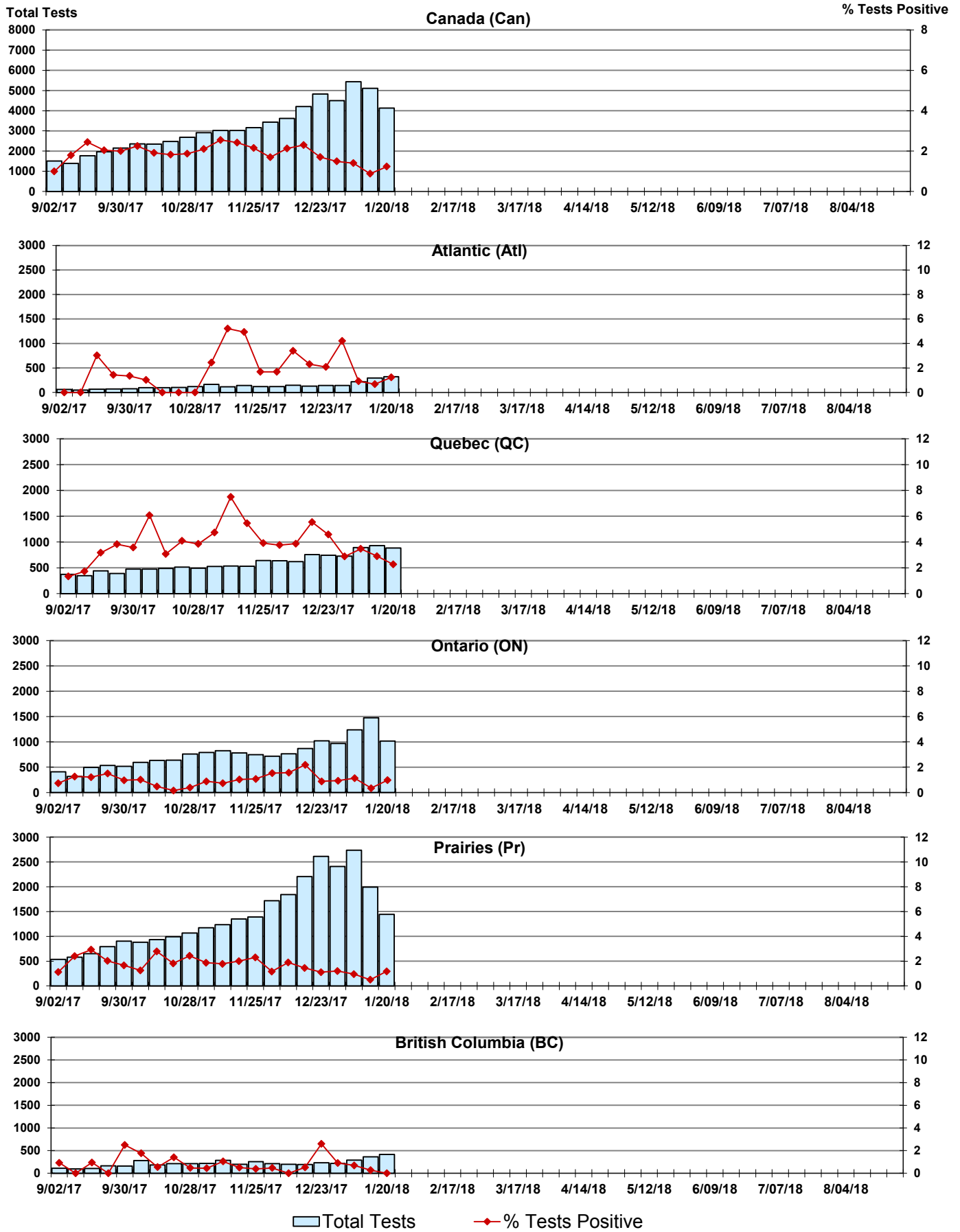


Figure 6: Positive human metapneumovirus (hMPV) Tests (%) in Canada by Region by Week of Report

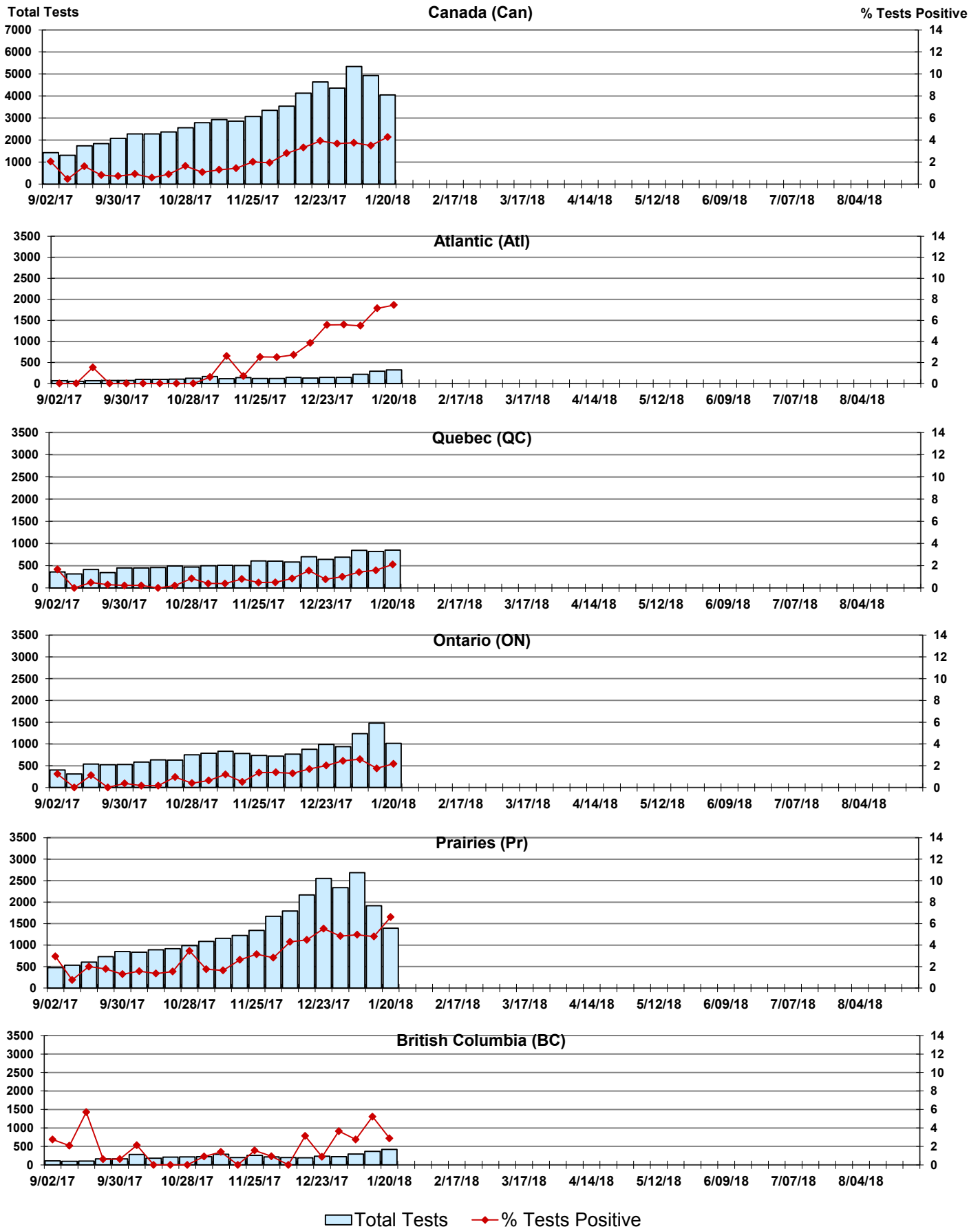


Figure 7: Positive Enterovirus/Rhinovirus (entero/rhino) Tests (%) in Canada by Region by Week of Report

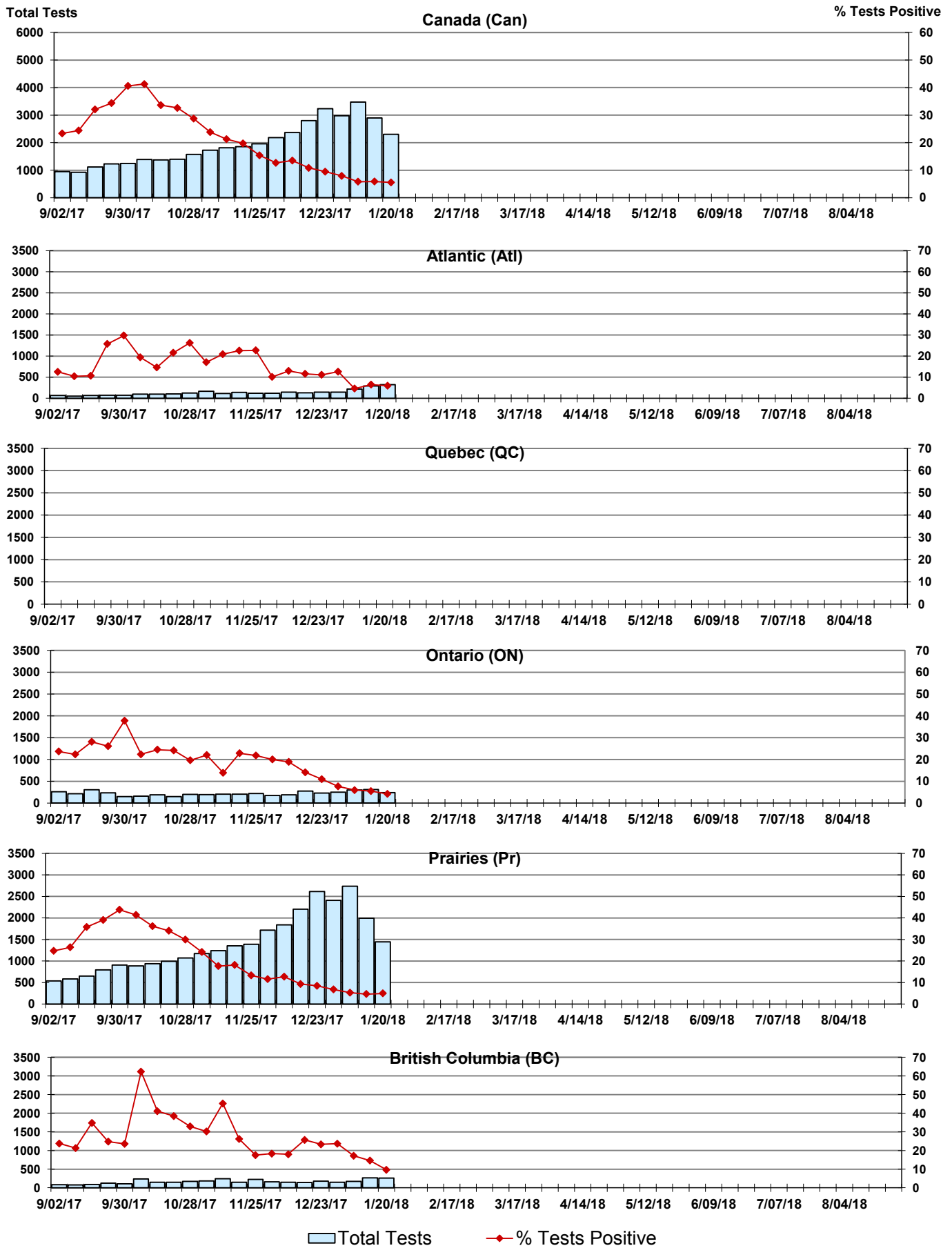
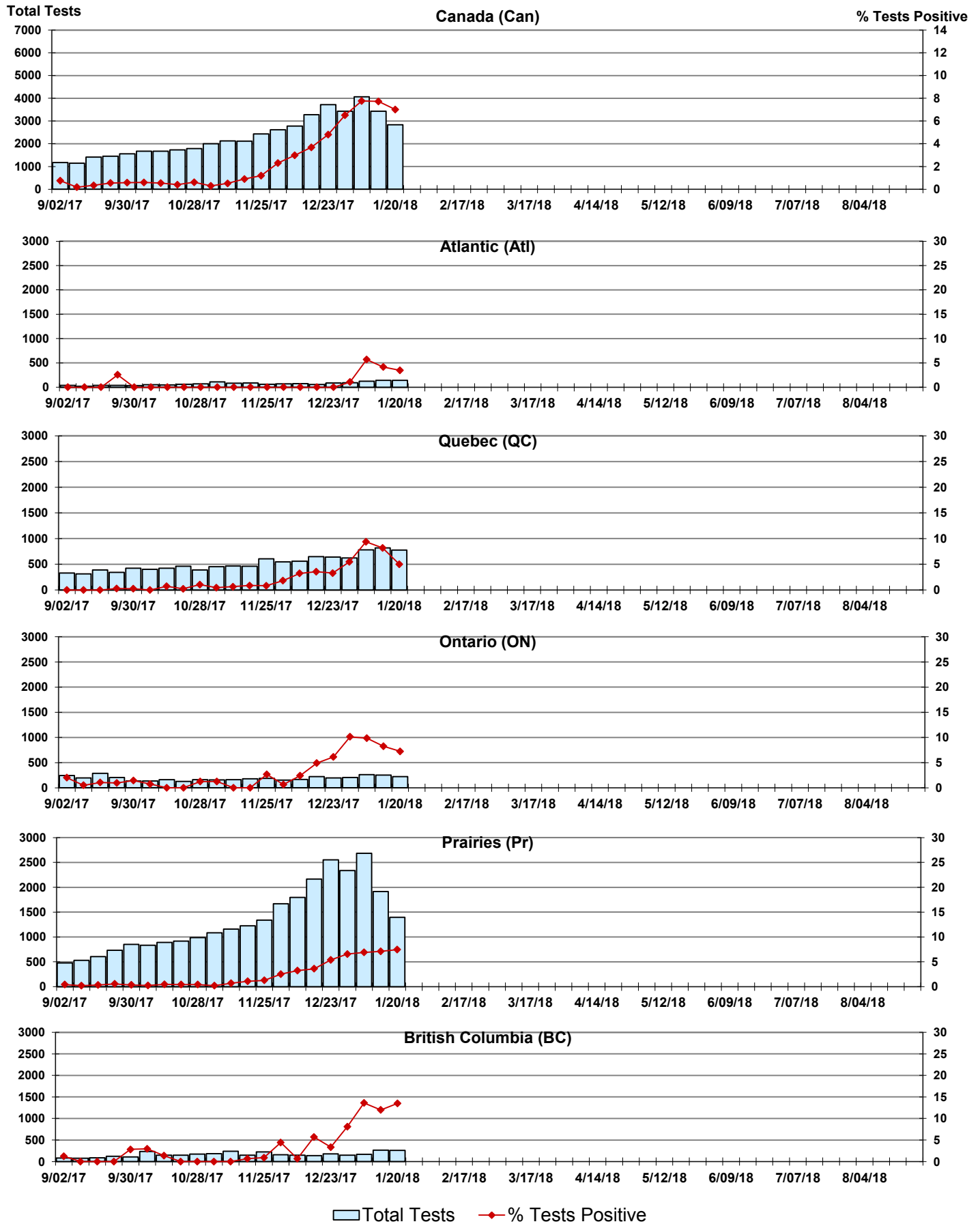


Figure 8: Positive Coronavirus (coron) Tests (%) in Canada by Region by Week of Report



Abbreviations:

A(H1N1)pdm09: Influenza A(H1N1)pdm09

A(H3): Influenza A(H3N2)

A (UnS): Influenza A (Unsubtyped)

Adeno: Adenovirus

CHEO: Children's Hospital of Eastern Ontario

Coron: Coronavirus

Entero: Enterovirus

hMPV: human metapneumovirus

HSC: Health Sciences Centre

N.A.: Not Applicable

P.H.L.: Public Health Laboratory

P.H.O.L.: Public Health Ontario Laboratory

PIV: Parainfluenza

Rhino: Rhinovirus

RSV: Respiratory syncytial virus

UHN: University Health Network

Notes:

Specimens from Yukon (YT), Northwest Territories (NT) and Nunavut (NU) are sent to reference laboratories in other provinces. Results reported for the Territories reflect the number of specimens that are identified as originating from YT, NT or NU.

Delays in the reporting of data may cause data to change retrospectively.

Due to reporting delays, the sum of weekly report totals do not add up to cumulative totals.