

Respiratory Virus Detections in Canada

Respiratory Virus Report, Week 18 - ending May 5, 2018

The Respiratory Virus Detection Surveillance System collects data from select laboratories across Canada on the number of tests performed and the number of tests positive for influenza and other respiratory viruses. Data are reported on a weekly basis year-round to the Centre for Immunization and Respiratory Infectious Diseases (CIRID), Public Health Agency of Canada. These data are also summarized in the weekly FluWatch report.

Table 1: Respiratory Virus Detections/Isolations for the week ending May 5, 2018 (Reporting Week 201818)

Reporting Laboratory	Flu Tested	A(H1N1)pdm09 Positive	A(H3) Positive	A(UnS) Positive	Total Flu A Positive	Total Flu B Positive	RSV Tested	RSV Positive	PIV Tested	PIV 1 Positive	PIV 2 Positive	PIV 3 Positive	PIV 4 Positive	Other PIV Positive	Adeno Tested	Adeno Positive	hMPV Tested	hMPV Positive	Entero/Rhino Tested	Entero/Rhino Positive	Coron Tested	Coron Positive
Newfoundland	87	0	0	10	10	11	87	3	87	0	0	3	0	0	87	1	87	7	87	7	N.A.	N.A.
Prince Edward Island	32	0	5	3	8	1	33	1	8	0	0	0	0	0	8	0	8	1	8	2	8	1
Nova Scotia	81	0	0	15	15	4	84	2	6	0	0	0	0	0	6	0	6	2	6	1	6	0
New Brunswick	420	0	11	39	50	30	420	26	81	0	0	2	0	0	81	1	81	5	81	14	81	2
Atlantic	620	0	16	67	83	46	624	32	182	0	0	5	0	0	182	2	182	15	182	24	95	3
Région Nord-Est	194	0	0	2	2	2	172	10	0	0	0	0	0	0	0	0	0	0	N.A.	N.A.	0	0
Québec-Chaudière-Appalaches	234	0	0	9	9	3	240	6	70	1	0	4	0	0	75	5	63	1	N.A.	N.A.	61	0
Centre-du-Québec	238	0	0	10	10	5	204	9	0	0	0	0	0	0	0	0	0	0	N.A.	N.A.	0	0
Montréal-Laval	719	0	0	22	22	7	700	18	419	1	1	13	0	0	419	23	406	27	N.A.	N.A.	371	5
Ouest du Québec	136	0	0	6	6	3	106	7	0	0	0	0	0	0	0	0	0	0	N.A.	N.A.	0	0
Montérégie	166	0	0	12	12	2	166	7	0	0	0	0	0	0	0	0	0	0	N.A.	N.A.	0	0
Province of Québec	1687	0	0	61	61	22	1588	57	489	2	1	17	0	0	494	28	469	28	N.A.	N.A.	432	5
Ottawa P.H.L.	11	0	0	0	0	3	6	0	6	0	0	0	0	0	6	0	5	0	1	0	0	0
CHEO - Ottawa	167	0	0	2	2	7	167	4	29	0	0	1	0	0	29	3	29	0	29	8	29	5
Kingston P.H.L.	12	0	0	0	0	1	10	0	10	0	0	0	0	0	10	0	10	0	0	0	0	0
UHN / Mount Sinai Hospital	237	0	0	2	2	2	237	5	19	0	0	2	0	0	0	0	0	0	N.A.	N.A.	N.A.	N.A.
P.H.O.L. - Toronto	291	3	10	4	17	7	261	3	261	0	0	9	0	0	261	3	243	15	18	0	0	0
Sick Kids Hospital - Toronto	59	0	0	0	0	1	59	1	59	0	0	4	1	0	59	3	59	2	59	18	59	2
Sunnybrook & Women's College HSC	0	0	0	0	0	0	0	0	0	0	0	0	0	0	0	0	0	0	0	0	0	0
Sault Ste. Marie P.H.L.	5	0	1	0	1	0	4	0	4	0	0	0	0	0	4	0	4	0	0	0	0	0
Timmins P.H.L.	11	0	1	3	4	0	7	0	7	0	0	0	0	0	7	0	7	0	0	0	0	0
St. Joseph's - London	49	0	0	4	4	1	49	2	28	0	0	0	0	0	28	0	0	0	25	2	25	0
London P.H.L.	63	0	0	1	1	1	56	2	56	0	0	3	0	0	56	1	54	5	2	0	0	0
Orillia P.H.L.	21	0	1	0	1	3	10	0	10	0	0	0	0	0	10	0	10	0	0	0	0	0
Thunder Bay P.H.L.	7	0	0	0	0	0	5	1	5	0	0	0	0	0	5	0	5	0	0	0	0	0
Sudbury P.H.L.	22	0	3	0	3	2	17	1	17	0	0	0	0	0	17	0	16	0	1	0	0	0
Hamilton P.H.L.	43	2	0	0	2	1	40	0	40	0	0	2	0	0	40	0	38	1	2	0	0	0
Peterborough P.H.L.	14	0	1	0	1	0	9	0	9	0	0	0	0	0	9	0	9	0	0	0	0	0
Province of Ontario	1012	5	17	16	38	29	937	19	560	0	0	21	1	0	541	10	489	23	137	28	113	7
Manitoba	159	1	0	0	1	4	159	9	100	0	0	1	0	0	100	1	67	6	100	20	67	3
Regina	204	1	0	0	1	5	204	22	204	1	7	9	2	0	204	1	204	6	204	57	204	3
Saskatoon	0	0	0	0	0	0	0	0	0	0	0	0	0	0	0	0	0	0	0	0	0	0
Province of Saskatchewan	204	1	0	0	1	5	204	22	204	1	7	9	2	0	204	1	204	6	204	57	204	3
Province of Alberta	549	11	3	9	23	15	478	0	478	1	4	27	2	0	478	9	478	34	478	114	478	12
Prairies	912	13	3	9	25	24	841	31	782	2	11	37	4	0	782	11	749	46	782	191	749	18
British Columbia	284	5	10	1	16	5	284	7	181	1	1	5	2	0	181	5	181	21	126	36	126	2
Yukon	5	0	1	0	1	0	5	0	N.A.	N.A.	N.A.	N.A.	N.A.	N.A.	N.A.	N.A.	N.A.	N.A.	N.A.	N.A.	N.A.	N.A.
Northwest Territories	12	0	0	0	0	0	12	0	12	0	0	0	3	0	12	3	12	0	12	2	12	0
Nunavut	6	0	0	0	0	0	6	0	6	0	0	0	2	0	6	0	6	0	6	1	6	0
Territories	23	0	1	0	1	0	23	0	18	0	0	0	5	0	18	3	18	0	18	3	18	0
CANADA	4538	23	47	154	224	126	4297	146	2212	5	13	85	12	0	2198	59	2088	133	1245	282	1533	35

Specimens from Yukon (YT), Northwest Territories (NT) and Nunavut (NU) are sent to reference laboratories in other provinces and reported results reflect specimens identified as originating from YT, NT or NU. Delays in the reporting of data may cause data to change retrospectively.

Table 2: Respiratory Virus Detections/Isolations for the period August 27, 2017 - May 5, 2018 (Reporting Weeks 201735-201818)

Reporting Laboratory	Flu Tested	A(H1N1)pdm09 Positive	A(H3) Positive	A(UnS) Positive	Total Flu A Positive	Total Flu B Positive	RSV Tested	RSV Positive	PIV Tested	PIV 1 Positive	PIV 2 Positive	PIV 3 Positive	PIV 4 Positive	Other PIV Positive	Adeno Tested	Adeno Positive	hMPV Tested	hMPV Positive	Entero/Rhino Tested	Entero/Rhino Positive	Coron Tested	Coron Positive
Newfoundland	4102	0	3	468	471	429	4102	211	4102	97	19	38	0	0	4102	47	4103	223	4102	204	N.A.	N.A.
Prince Edward Island	1231	8	134	4	146	170	1257	174	75	1	0	0	2	0	75	4	75	5	75	13	75	7
Nova Scotia	3885	0	0	549	549	293	3930	529	488	5	1	2	1	0	488	7	488	29	488	73	488	16
New Brunswick	10677	28	235	1377	1640	1224	10245	729	2546	26	36	18	13	0	2546	58	2546	133	2546	304	2546	151
Atlantic	19895	36	372	2398	2806	2116	19534	1643	7211	129	56	58	16	0	7211	116	7212	390	7211	594	3109	174
Région Nord-Est	13187	0	0	1829	1829	1390	11331	841	0	0	0	0	0	0	0	0	0	0	N.A.	N.A.	0	0
Québec-Chaudière-Appalaches	15792	0	0	2614	2614	2075	15418	1328	2925	41	1	6	19	0	2980	107	2483	19	N.A.	N.A.	2408	22
Centre-du-Québec	19186	0	0	2803	2803	2657	15218	1405	0	0	0	0	0	0	0	0	0	0	N.A.	N.A.	0	0
Montréal-Laval	45026	0	0	5044	5044	3804	39735	2590	20130	205	30	165	50	0	20302	674	19497	549	N.A.	N.A.	17863	587
Ouest du Québec	12841	0	0	1879	1879	1529	8215	736	0	0	0	0	0	0	0	0	0	0	N.A.	N.A.	0	0
Montérégie	8836	0	0	1252	1252	862	8694	626	0	0	0	0	0	0	0	0	0	0	N.A.	N.A.	0	0
Province of Québec	114868	0	0	15421	15421	12317	98611	7526	23055	246	31	171	69	0	23282	781	21980	568	N.A.	N.A.	20271	609
Ottawa P.H.L.	922	4	122	56	182	143	496	11	496	6	0	1	0	0	496	4	480	15	34	6	10	1
CHEO - Ottawa	8132	0	0	786	786	565	8131	693	798	13	1	12	8	0	825	27	882	22	824	179	824	46
Kingston P.H.L.	1008	4	103	38	145	91	727	26	727	9	0	1	1	0	727	5	678	15	124	7	22	0
UHN / Mount Sinai Hospital	11160	0	2	620	622	560	11160	388	650	7	2	2	8	0	0	0	609	14	N.A.	N.A.	N.A.	N.A.
P.H.O.L. - Toronto	15390	168	1562	128	1858	1159	11858	265	11859	109	11	59	1	0	11858	103	11503	196	758	48	234	5
Sick Kids Hospital - Toronto	2979	16	58	121	195	176	2331	197	2331	29	4	38	30	0	2331	54	2331	142	2331	554	2331	133
Sunnybrook & Women's College HSC	2803	13	206	3	222	176	2803	73	2803	22	9	15	10	0	2803	1	2803	79	2803	201	2803	96
Sault Ste. Marie P.H.L.	609	1	98	8	107	51	445	10	445	9	0	0	1	0	445	0	434	3	24	3	12	0
Timmins P.H.L.	458	7	84	8	99	36	323	22	323	1	0	0	0	0	323	1	315	1	22	1	2	0
St. Joseph's - London	4551	0	0	416	416	417	4551	373	1414	24	4	12	11	0	1286	33	1231	56	716	150	666	21
London P.H.L.	4649	27	455	112	594	643	3112	189	3112	38	3	28	3	0	3112	15	3026	69	260	21	63	0
Orillia P.H.L.	1498	8	153	64	225	133	1066	53	1066	19	0	4	0	0	1066	9	1048	27	46	4	11	0
Thunder Bay P.H.L.	1126	2	196	19	217	93	803	27	803	12	2	3	0	0	803	5	791	16	15	0	3	0
Sudbury P.H.L.	1152	3	118	6	127	95	919	11	919	9	2	1	0	0	918	6	886	2	52	1	13	0
Hamilton P.H.L.	3378	29	206	92	327	341	2511	131	2510	33	5	18	3	0	2510	27	2436	48	190	21	64	2
Peterborough P.H.L.	1746	6	98	51	155	126	1400	44	1400	21	0	2	0	0	1400	6	1392	32	56	12	44	2
Province of Ontario	61561	288	3461	2528	6277	4805	52636	2513	31656	361	43	196	76	0	30903	296	30845	737	8255	1208	7102	306
Manitoba	10917	19	378	736	1133	632	10683	559	4136	59	14	9	12	0	4136	57	2259	137	4136	396	2259	96
Regina	13045	69	1162	61	1292	1327	13045	816	13045	371	136	53	49	0	13045	211	13045	722	13045	2187	13045	825
Saskatoon	5247	0	0	382	382	345	5247	238	5146	32	4	12	3	0	5247	42	5247	73	5097	409	5247	94
Province of Saskatchewan	18292	69	1162	443	1674	1672	18292	1054	18191	403	140	65	52	0	18292	253	18292	795	18142	2596	18292	919
Province of Alberta	36828	246	3994	1418	5658	3368	29706	0	29706	536	184	251	286	0	29706	490	29706	1887	29706	4107	29706	1398
Prairies	66037	334	5534	2597	8465	5672	58681	1613	52033	998	338	325	350	0	52134	800	50257	2819	51984	7099	50257	2413
British Columbia	20704	514	1514	444	2472	3019	20523	860	8309	165	52	53	80	0	8309	85	8309	441	6014	1306	6014	393
Yukon	429	7	48	21	76	43	429	45	N.A.	N.A.	N.A.	N.A.	N.A.	N.A.	N.A.	N.A.	N.A.	N.A.	N.A.	N.A.	N.A.	N.A.
Northwest Territories	679	4	126	0	130	56	673	0	673	11	2	1	24	0	673	21	673	42	673	78	673	52
Nunavut	363	6	40	0	46	3	350	8	351	7	4	13	6	0	350	23	348	25	176	44	167	10
Territories	1471	17	214	21	252	102	1452	53	1024	18	6	14	30	0	1023	44	1021	67	849	122	840	62
CANADA	284536	1189	11095	23409	35693	28031	251437	14208	123288	1917	526	817	621	0	122862	2122	119624	5022	74313	10329	87593	3957

Specimens from YT, NT and NU are sent to reference laboratories in other provinces and reported results reflect specimens identified as originating from YT, NT or NU.

Delays in the reporting of data may cause data to change retrospectively.

Due to reporting delays, the sum of weekly report totals do not add up to cumulative totals.

Figure 1: Number positive laboratory tests for other respiratory viruses by report week, Canada, 2017-18

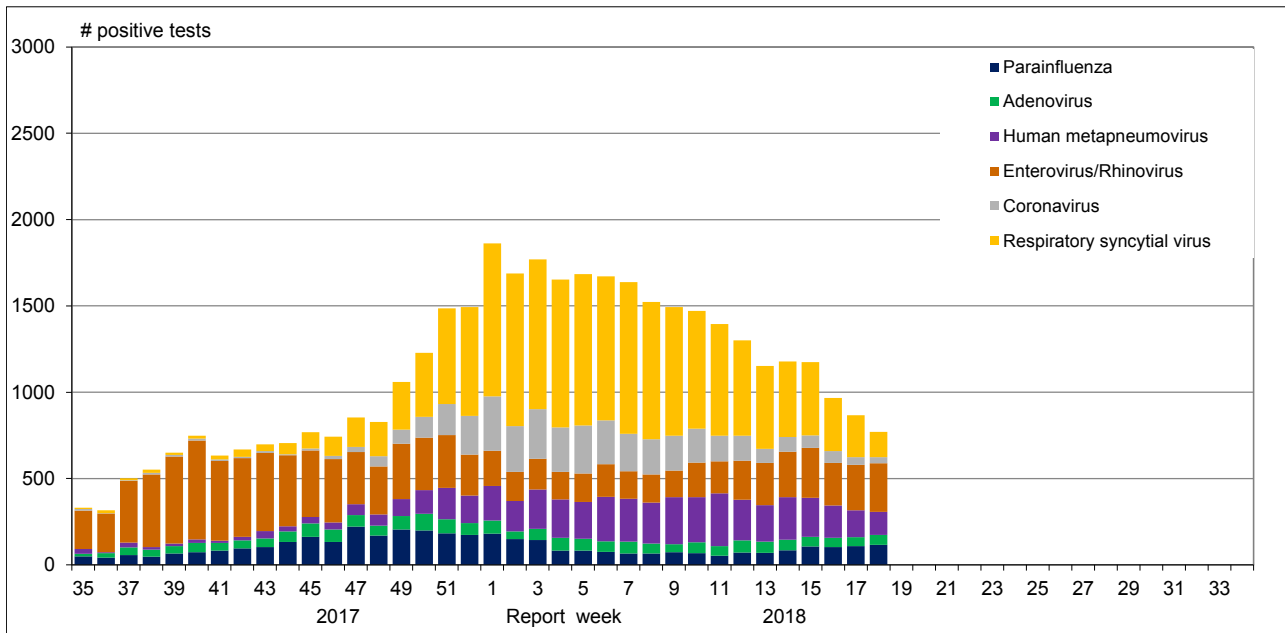


Figure 2: Positive Influenza Tests (%) in Canada by Region by Week of Report

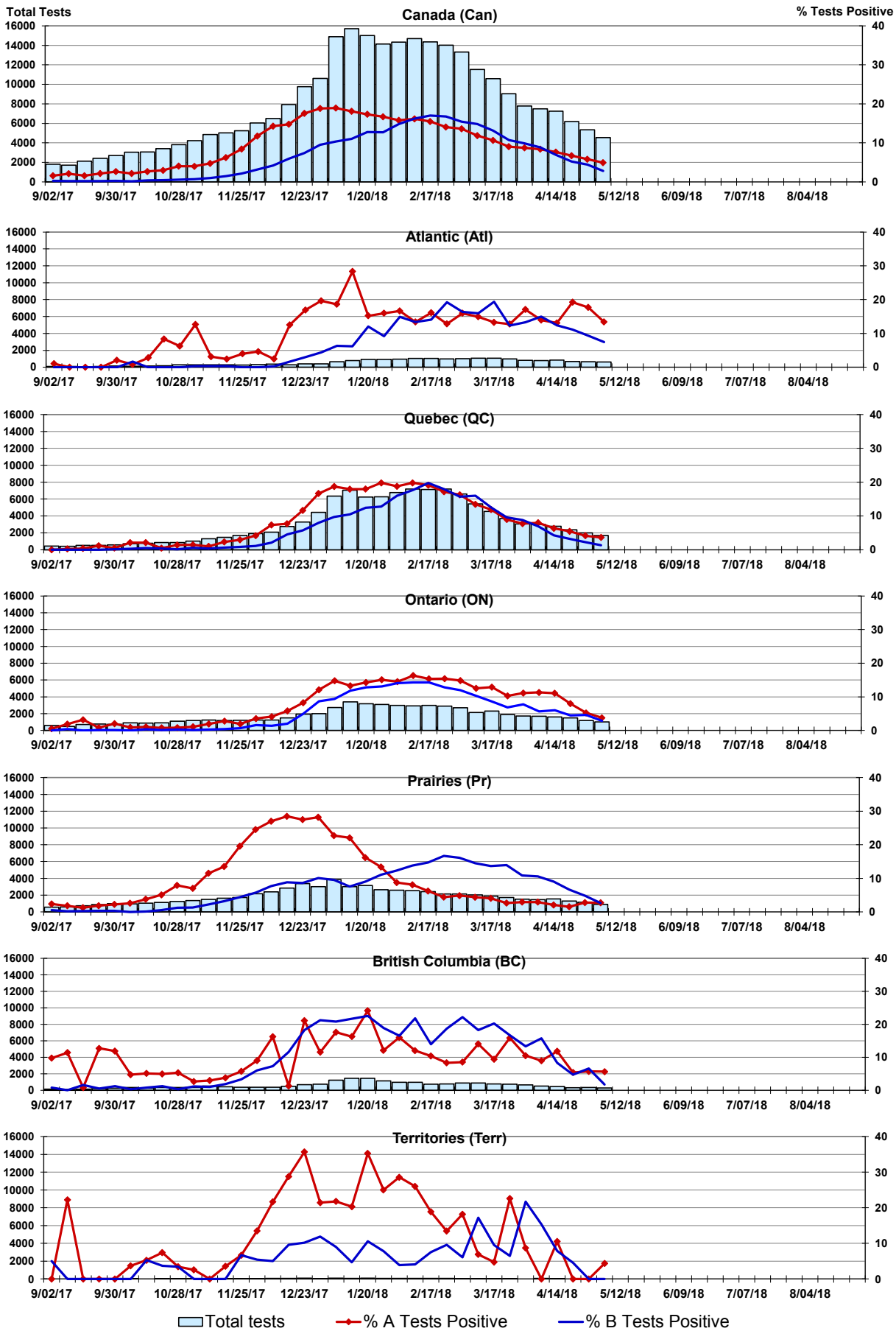


Figure 3: Positive Respiratory syncytial virus (RSV) Tests (%) in Canada by Region by Week of Report

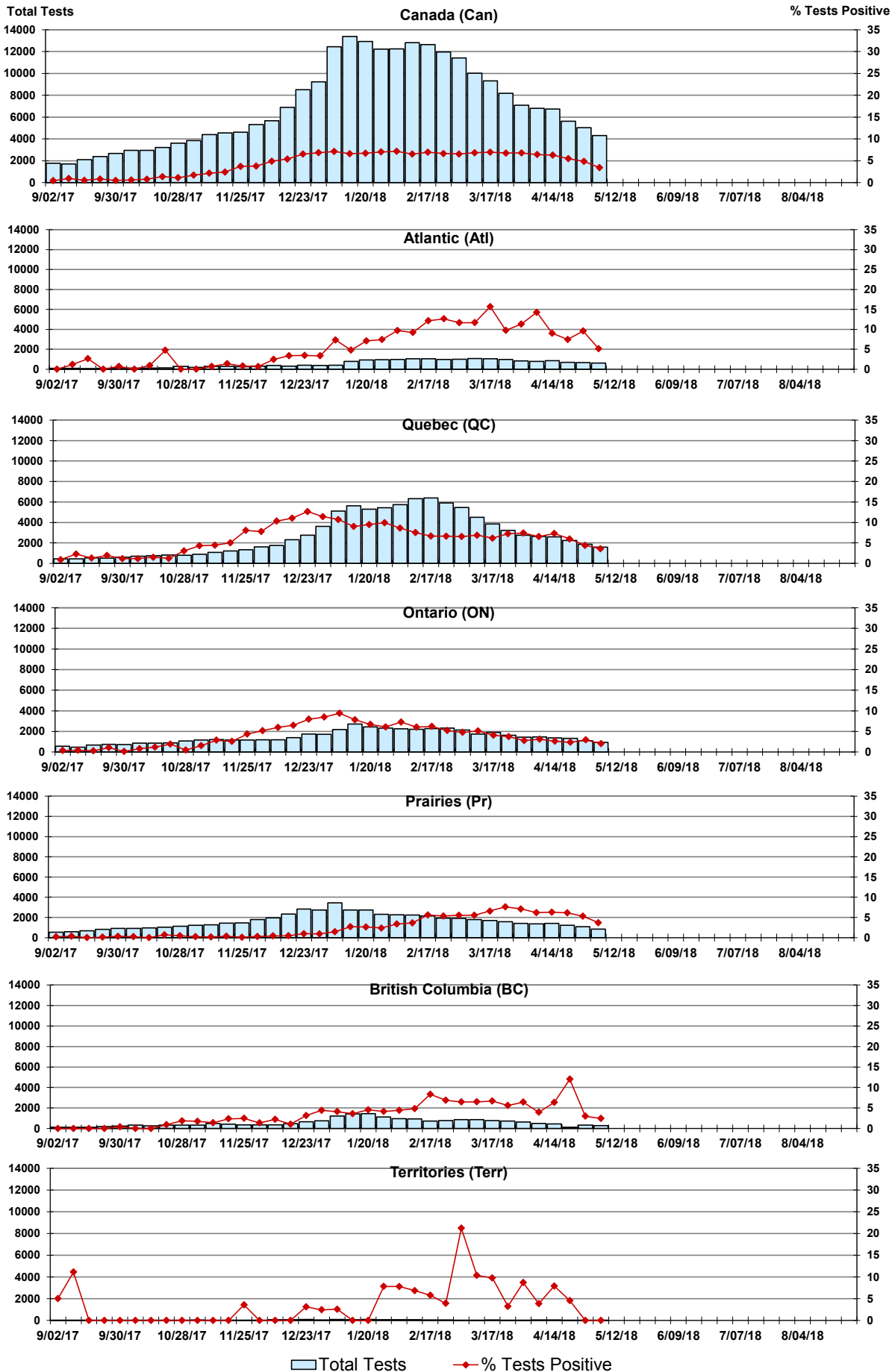


Figure 4: Positive Parainfluenza (PIV) Tests (%) in Canada by Region by Week of Report

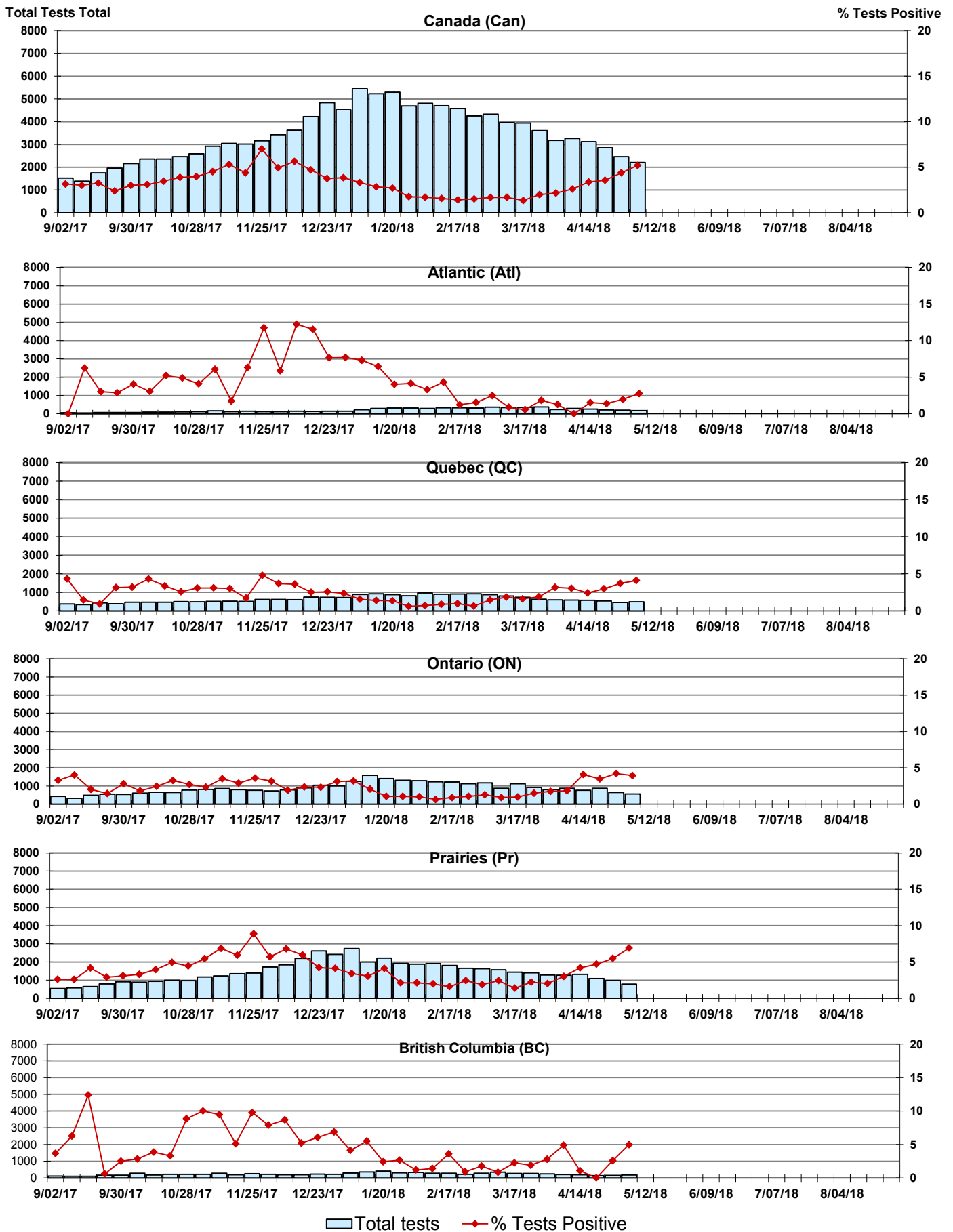


Figure 5: Positive Adenovirus (adeno) Tests (%) in Canada by Region by Week of Report

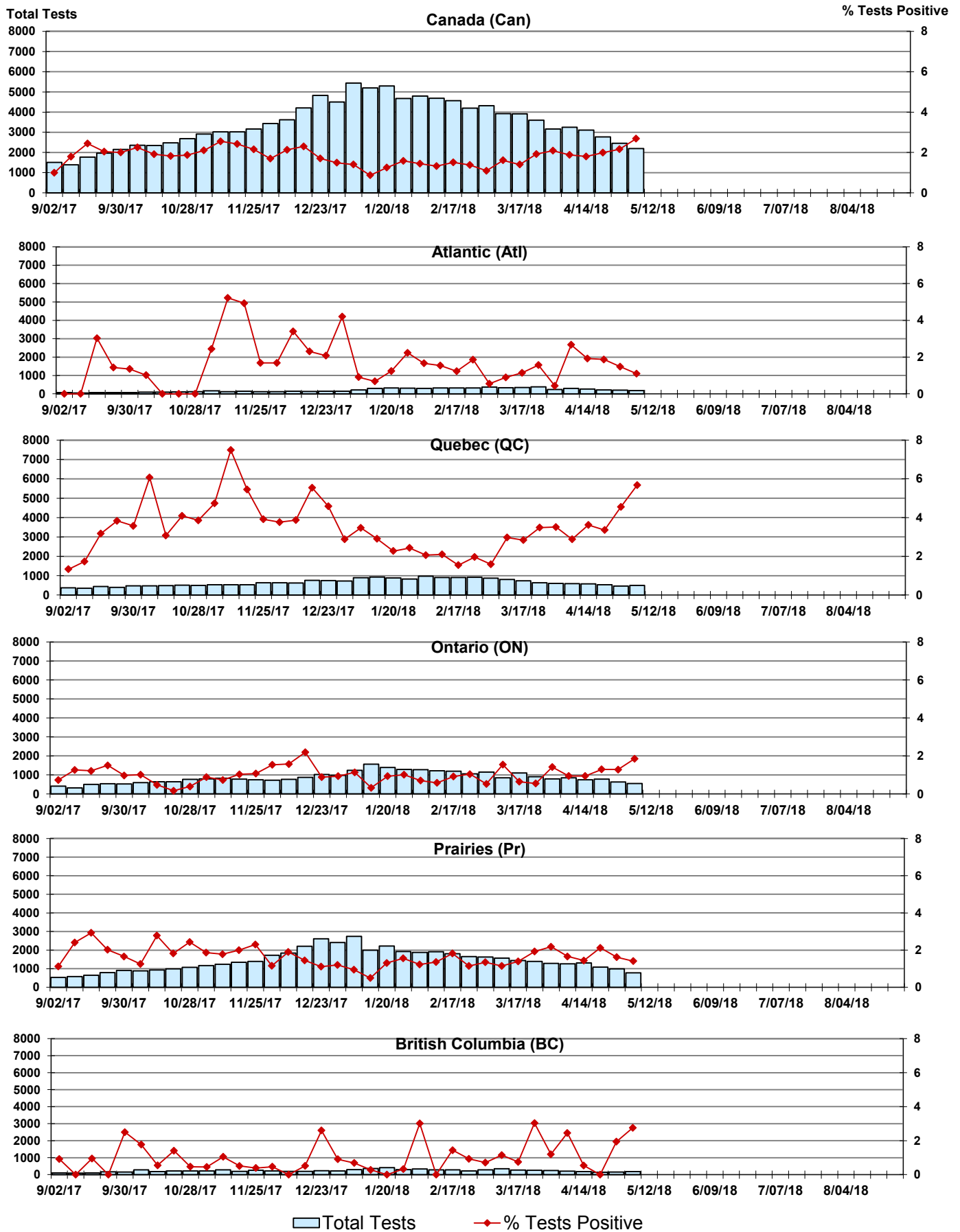


Figure 6: Positive human metapneumovirus (hMPV) Tests (%) in Canada by Region by Week of Report

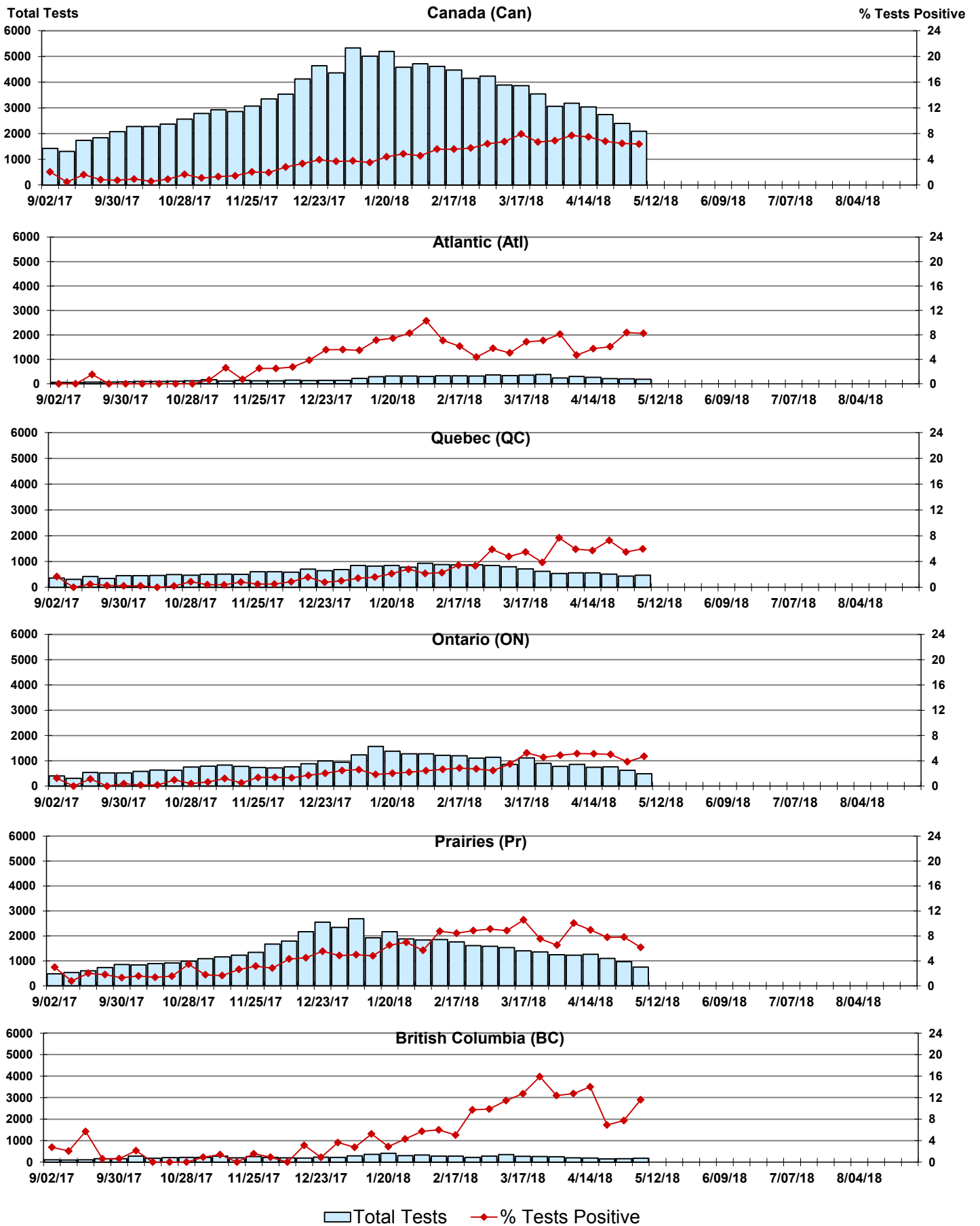


Figure 7: Positive Enterovirus/Rhinovirus (entero/rhino) Tests (%) in Canada by Region by Week of Report

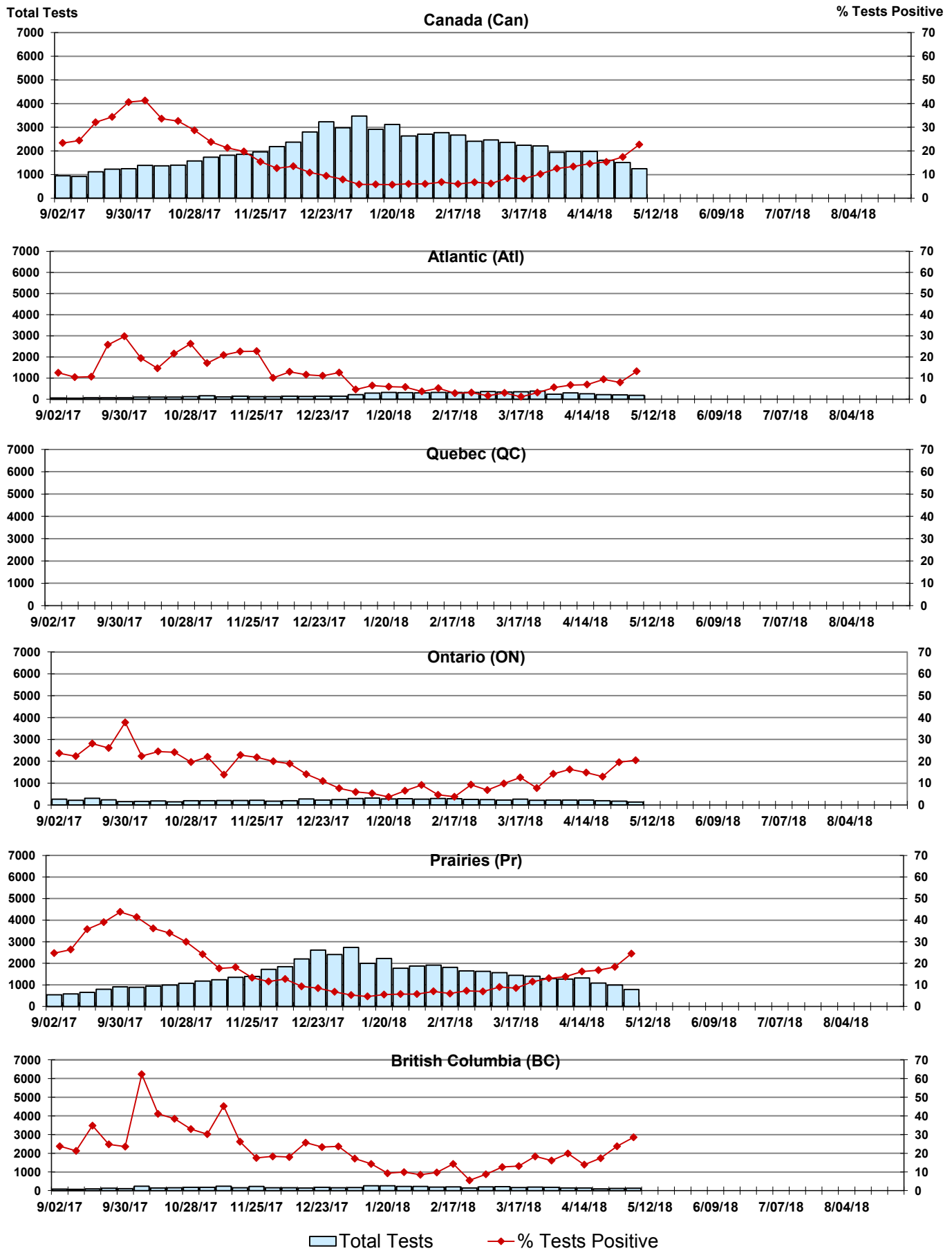
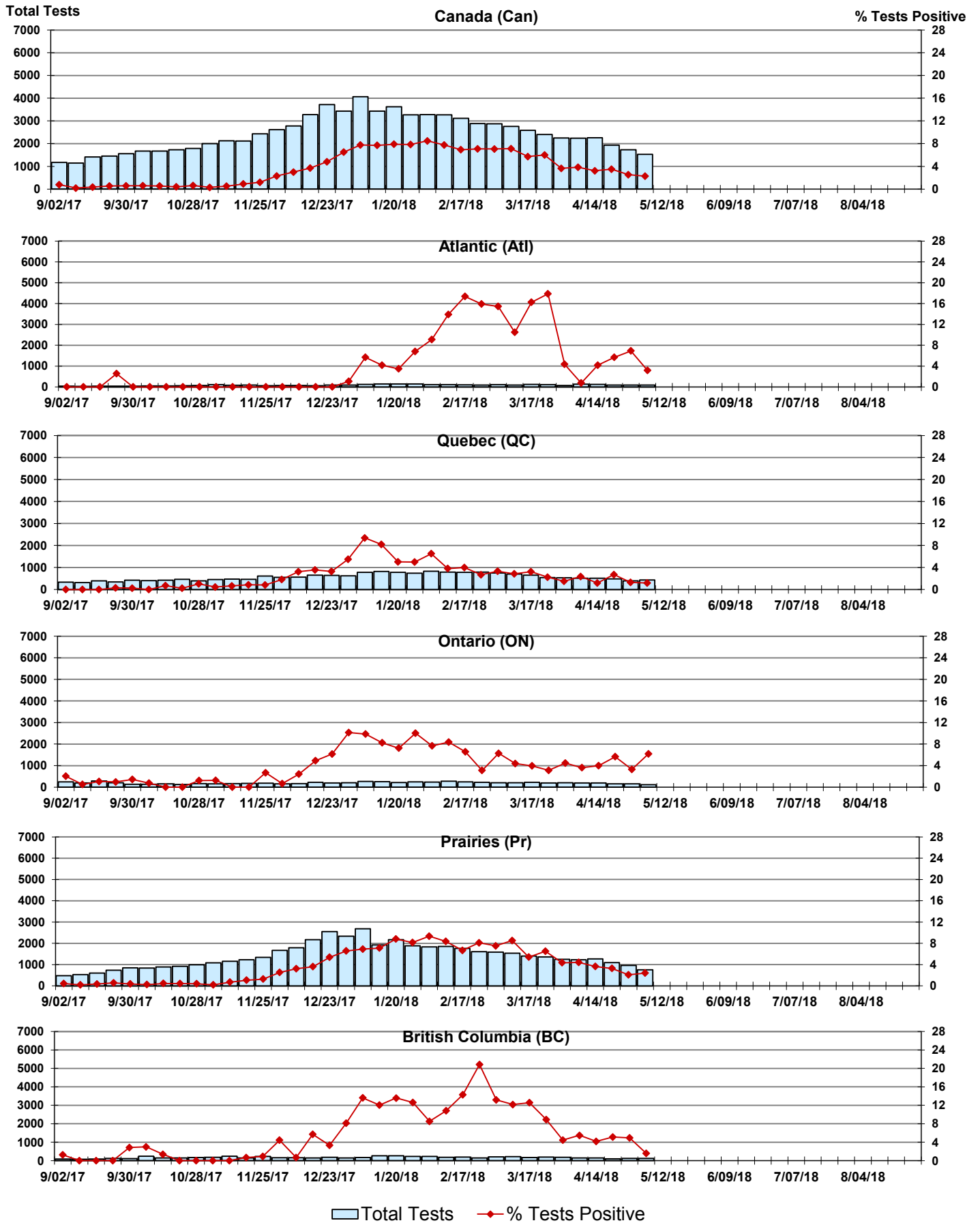


Figure 8: Positive Coronavirus (coron) Tests (%) in Canada by Region by Week of Report



Abbreviations:

A(H1N1)pdm09: Influenza A(H1N1)pdm09

A(H3): Influenza A(H3N2)

A (UnS): Influenza A (Unsubtyped)

Adeno: Adenovirus

CHEO: Children's Hospital of Eastern Ontario

Coron: Coronavirus

Entero: Enterovirus

hMPV: human metapneumovirus

HSC: Health Sciences Centre

N.A.: Not Applicable

P.H.L.: Public Health Laboratory

P.H.O.L.: Public Health Ontario Laboratory

PIV: Parainfluenza

Rhino: Rhinovirus

RSV: Respiratory syncytial virus

UHN: University Health Network

Notes:

Specimens from Yukon (YT), Northwest Territories (NT) and Nunavut (NU) are sent to reference laboratories in other provinces. Results reported for the Territories reflect the number of specimens that are identified as originating from YT, NT or NU.

Delays in the reporting of data may cause data to change retrospectively.

Due to reporting delays, the sum of weekly report totals do not add up to cumulative totals.