

# Respiratory Virus Detections in Canada

## Respiratory Virus Report, Week 50 - ending December 15, 2018

The Respiratory Virus Detection Surveillance System collects data from select laboratories across Canada on the number of tests performed and the number of tests positive for influenza and other respiratory viruses. Data are reported on a weekly basis year-round to the Centre for Immunization and Respiratory Infectious Diseases (CIRID), Public Health Agency of Canada. These data are also summarized in the weekly FluWatch report.

**Table 1: Respiratory Virus Detections/Isolations for the week ending December 15, 2018 (Reporting Week 201850)**

Reporting Laboratory	Flu Tested	A(H1N1)pdm09 Positive	A(H3) Positive	A(UnS) Positive	Total Flu A Positive	Total Flu B Positive	RSV Tested	RSV Positive	PIV Tested	PIV 1 Positive	PIV 2 Positive	PIV 3 Positive	PIV 4 Positive	Other PIV Positive	Adeno Tested	Adeno Positive	hMPV Tested	hMPV Positive	Entero/Rhino Tested	Entero/Rhino Positive	Coron Tested	Coron Positive
Newfoundland	134	0	0	17	17	0	134	14	134	0	3	0	0	0	134	0	134	1	134	22	N.A.	N.A.
Prince Edward Island	19	1	0	0	1	0	19	0	3	0	0	0	0	0	3	1	3	0	3	1	3	0
Nova Scotia	69	0	0	5	5	0	69	3	9	0	1	0	0	0	9	0	9	0	9	1	9	0
New Brunswick	433	7	0	81	88	1	433	11	122	0	1	0	4	0	122	7	122	2	122	10	122	1
<b>Atlantic</b>	<b>655</b>	<b>8</b>	<b>0</b>	<b>103</b>	<b>111</b>	<b>1</b>	<b>655</b>	<b>28</b>	<b>268</b>	<b>0</b>	<b>5</b>	<b>0</b>	<b>4</b>	<b>0</b>	<b>268</b>	<b>8</b>	<b>268</b>	<b>3</b>	<b>268</b>	<b>34</b>	<b>134</b>	<b>1</b>
Région Nord-Est	341	0	0	102	102	1	239	3	0	0	0	0	0	0	0	0	0	0	N.A.	N.A.	0	0
Québec-Chaudière-Appalaches	521	0	0	101	101	3	511	43	70	0	1	1	0	0	72	7	57	0	N.A.	N.A.	57	0
Centre-du-Québec	400	0	0	82	82	0	374	31	0	0	0	0	0	0	0	0	0	0	N.A.	N.A.	0	0
Montréal-Laval	1279	0	0	144	144	0	1226	156	714	1	10	1	1	0	714	27	705	8	N.A.	N.A.	705	55
Ouest du Québec	463	0	0	105	105	0	409	55	0	0	0	0	0	0	0	0	0	0	N.A.	N.A.	0	0
Montréal	272	0	0	46	46	0	272	25	0	0	0	0	0	0	0	0	0	0	N.A.	N.A.	0	0
<b>Province of Québec</b>	<b>3276</b>	<b>0</b>	<b>0</b>	<b>580</b>	<b>580</b>	<b>4</b>	<b>3031</b>	<b>313</b>	<b>784</b>	<b>1</b>	<b>11</b>	<b>2</b>	<b>1</b>	<b>0</b>	<b>786</b>	<b>34</b>	<b>762</b>	<b>8</b>	<b>N.A.</b>	<b>N.A.</b>	<b>762</b>	<b>55</b>
Ottawa P.H.L.	28	2	0	0	2	0	28	0	11	0	0	0	0	0	11	0	11	0	0	0	0	0
CHEO - Ottawa	218	0	0	12	12	1	218	29	26	0	0	0	2	0	26	2	25	1	26	4	25	2
Kingston P.H.L.	31	1	1	0	2	0	31	0	14	0	1	0	0	0	14	0	13	0	1	0	0	0
UHN / Mount Sinai Hospital	383	0	0	31	31	2	383	18	17	0	1	0	0	0	0	0	17	0	N.A.	N.A.	N.A.	N.A.
P.H.O.L. - Toronto	363	28	10	3	41	1	356	0	272	0	3	2	0	0	272	2	265	1	7	0	0	0
Sick Kids Hospital - Toronto	0	0	0	0	0	0	0	0	0	0	0	0	0	0	0	0	0	0	0	0	0	0
Sunnybrook & Women's College HSC	92	2	2	1	5	0	92	4	92	1	0	0	0	0	92	0	92	1	92	2	92	6
Sault Ste. Marie P.H.L.	9	0	0	0	0	0	9	0	9	0	0	0	0	0	9	0	9	0	0	0	0	0
Timmins P.H.L.	12	0	0	0	0	0	12	0	12	0	0	0	0	0	12	0	12	0	0	0	0	0
St. Joseph's - London	126	0	0	5	5	0	126	21	33	0	1	0	1	0	33	3	33	4	33	4	15	0
London P.H.L.	138	15	2	7	24	0	132	0	79	0	0	0	0	0	79	1	76	0	3	0	0	0
Orillia P.H.L.	30	1	0	0	1	0	30	0	18	0	0	0	0	0	18	0	18	0	0	0	0	0
Thunder Bay P.H.L.	6	1	0	0	1	0	5	0	5	0	0	0	0	0	5	0	5	0	0	0	0	0
Sudbury P.H.L.	30	0	0	0	0	0	30	2	29	0	0	0	0	0	29	0	29	1	0	0	0	0
Hamilton P.H.L.	116	2	2	3	7	0	116	0	84	0	0	1	0	0	84	1	80	0	4	0	0	0
Peterborough P.H.L.	18	0	0	0	0	0	18	0	7	0	0	0	0	0	7	0	7	0	0	0	0	0
<b>Province of Ontario</b>	<b>1600</b>	<b>52</b>	<b>17</b>	<b>62</b>	<b>131</b>	<b>4</b>	<b>1586</b>	<b>74</b>	<b>708</b>	<b>1</b>	<b>5</b>	<b>4</b>	<b>3</b>	<b>0</b>	<b>691</b>	<b>9</b>	<b>692</b>	<b>8</b>	<b>166</b>	<b>10</b>	<b>132</b>	<b>8</b>
Manitoba	354	16	0	113	129	0	340	10	62	0	0	4	0	0	62	1	48	0	62	4	48	1
Regina	569	214	6	21	241	0	569	10	569	0	3	11	3	0	569	9	569	0	569	71	569	5
Saskatoon	314	0	0	94	94	0	314	8	314	0	0	0	0	0	314	1	314	3	314	16	314	1
Province of Saskatchewan	883	214	6	115	335	0	883	18	883	0	3	11	3	0	883	10	883	3	883	87	883	6
Province of Alberta	1494	333	6	179	518	0	1113	0	1113	1	15	9	6	0	1113	12	1113	12	1113	117	1113	29
<b>Prairies</b>	<b>2731</b>	<b>563</b>	<b>12</b>	<b>407</b>	<b>982</b>	<b>0</b>	<b>2336</b>	<b>28</b>	<b>2058</b>	<b>1</b>	<b>18</b>	<b>24</b>	<b>9</b>	<b>0</b>	<b>2058</b>	<b>23</b>	<b>2044</b>	<b>15</b>	<b>2058</b>	<b>208</b>	<b>2044</b>	<b>36</b>
<b>British Columbia</b>	<b>637</b>	<b>84</b>	<b>4</b>	<b>109</b>	<b>197</b>	<b>3</b>	<b>637</b>	<b>32</b>	<b>235</b>	<b>0</b>	<b>0</b>	<b>5</b>	<b>1</b>	<b>0</b>	<b>235</b>	<b>0</b>	<b>235</b>	<b>1</b>	<b>170</b>	<b>40</b>	<b>170</b>	<b>1</b>
Yukon	11	2	0	1	3	0	11	0	N.A.	N.A.	N.A.	N.A.	N.A.	N.A.	N.A.	N.A.	N.A.	N.A.	N.A.	N.A.	N.A.	N.A.
Northwest Territories	61	26	0	0	26	0	61	0	61	0	0	1	0	0	61	1	61	1	61	9	61	1
Nunavut	2	0	0	0	0	0	2	0	2	0	0	0	0	0	2	1	2	0	2	0	2	0
<b>Territories</b>	<b>74</b>	<b>28</b>	<b>0</b>	<b>1</b>	<b>29</b>	<b>0</b>	<b>74</b>	<b>0</b>	<b>63</b>	<b>0</b>	<b>0</b>	<b>1</b>	<b>0</b>	<b>0</b>	<b>63</b>	<b>2</b>	<b>63</b>	<b>1</b>	<b>63</b>	<b>9</b>	<b>63</b>	<b>1</b>
<b>CANADA</b>	<b>8973</b>	<b>735</b>	<b>33</b>	<b>1262</b>	<b>2030</b>	<b>12</b>	<b>8319</b>	<b>475</b>	<b>4116</b>	<b>3</b>	<b>39</b>	<b>36</b>	<b>18</b>	<b>0</b>	<b>4101</b>	<b>76</b>	<b>4064</b>	<b>36</b>	<b>2725</b>	<b>301</b>	<b>3305</b>	<b>102</b>

Specimens from Yukon (YT), Northwest Territories (NT) and Nunavut (NU) are sent to reference laboratories in other provinces and reported results reflect specimens identified as originating from YT, NT or NU.

Results from British Columbia comprise of specimens from the following sites: BC Children's and Women's Hospital, Powell River Hospital, St. Paul's Hospital, Vancouver General Hospital, Victoria General Hospital, Interior Health Authority sites and Northern Health Authority sites.

Delays in the reporting of data may cause data to change retrospectively.

**Table 2: Respiratory Virus Detections/Isolations for the period August 26, 2018 - December 15, 2018 (Reporting Weeks 201835-201850)**

Reporting Laboratory	Flu Tested	A(H1N1)pdm09 Positive	A(H3) Positive	A(UnS) Positive	Total Flu A Positive	Total Flu B Positive	RSV Tested	RSV Positive	PIV Tested	PIV 1 Positive	PIV 2 Positive	PIV 3 Positive	PIV 4 Positive	Other PIV Positive	Adeno Tested	Adeno Positive	hMPV Tested	hMPV Positive	Entero/Rhino Tested	Entero/Rhino Positive	Coron Tested	Coron Positive
Newfoundland	870	1	0	30	31	1	870	36	870	0	8	25	0	0	870	10	870	1	870	156	N.A.	N.A.
Prince Edward Island	220	7	0	0	7	0	217	0	50	0	0	1	3	0	45	5	45	0	45	20	45	0
Nova Scotia	551	0	0	18	18	0	555	18	297	0	2	7	1	0	297	0	297	3	297	49	297	0
New Brunswick	2366	17	0	139	156	2	2369	26	909	0	10	4	20	0	909	66	909	3	909	173	909	2
<b>Atlantic</b>	<b>4007</b>	<b>25</b>	<b>0</b>	<b>187</b>	<b>212</b>	<b>3</b>	<b>4011</b>	<b>80</b>	<b>2126</b>	<b>0</b>	<b>20</b>	<b>37</b>	<b>24</b>	<b>0</b>	<b>2121</b>	<b>81</b>	<b>2121</b>	<b>7</b>	<b>2121</b>	<b>398</b>	<b>1251</b>	<b>2</b>
Région Nord-Est	2303	0	0	353	353	2	1786	6	0	0	0	0	0	0	0	0	0	0	N.A.	N.A.	0	0
Québec-Chaudière-Appalaches	2670	0	0	305	305	8	2837	160	1074	3	24	6	5	0	1115	48	962	1	N.A.	N.A.	959	2
Centre-du-Québec	2047	0	0	181	181	9	1858	90	0	0	0	0	0	0	0	0	0	0	N.A.	N.A.	0	0
Montréal-Laval	11172	0	0	383	383	7	11125	646	7621	29	132	28	27	0	7621	268	7443	33	N.A.	N.A.	7444	151
Ouest du Québec	2190	0	0	218	218	3	1804	156	0	0	0	0	0	0	0	0	0	0	N.A.	N.A.	0	0
Montérégie	1783	0	0	106	106	1	1770	101	0	0	0	0	0	0	0	0	0	0	N.A.	N.A.	0	0
<b>Province of Québec</b>	<b>22165</b>	<b>0</b>	<b>0</b>	<b>1546</b>	<b>1546</b>	<b>30</b>	<b>21180</b>	<b>1159</b>	<b>8695</b>	<b>32</b>	<b>156</b>	<b>34</b>	<b>32</b>	<b>0</b>	<b>8736</b>	<b>316</b>	<b>8405</b>	<b>34</b>	<b>N.A.</b>	<b>N.A.</b>	<b>8403</b>	<b>153</b>
Ottawa P.H.L.	254	5	7	1	13	0	250	0	199	0	0	1	0	0	199	0	188	0	12	0	0	0
CHEO - Ottawa	2197	0	0	52	52	6	2197	73	369	0	6	3	2	0	369	15	368	2	369	121	366	5
Kingston P.H.L.	315	1	8	0	9	0	315	1	280	0	1	2	0	0	280	0	268	0	45	0	0	0
UHN / Mount Sinai Hospital	3554	0	0	64	64	6	3554	73	223	0	3	0	2	0	0	0	199	2	N.A.	N.A.	N.A.	N.A.
P.H.O.L. - Toronto	4878	82	54	6	142	18	4825	33	4425	12	42	15	0	0	4426	25	4309	17	213	0	0	0
Sick Kids Hospital - Toronto	818	16	3	0	19	0	818	81	818	4	27	10	14	0	818	17	818	7	818	279	818	35
Sunnybrook & Women's College HSC	860	18	6	2	26	0	860	11	860	2	3	5	1	0	860	0	860	8	860	99	860	18
Sault Ste. Marie P.H.L.	99	1	0	0	1	0	98	1	98	0	0	0	0	0	98	0	97	0	1	0	0	0
Timmins P.H.L.	95	2	0	0	2	0	93	0	93	0	3	2	0	0	93	0	89	0	8	0	0	0
St. Joseph's - London	897	3	0	10	13	0	897	68	498	1	5	5	8	0	498	21	498	11	422	118	371	2
London P.H.L.	1138	52	2	9	63	1	1115	10	937	0	12	1	0	0	937	8	908	2	51	0	0	0
Orillia P.H.L.	268	1	0	0	1	0	268	1	244	0	1	2	0	0	244	1	236	0	10	0	0	0
Thunder Bay P.H.L.	94	3	0	0	3	0	91	0	91	1	0	3	0	0	91	0	87	0	4	0	0	0
Sudbury P.H.L.	227	0	0	0	0	0	226	5	225	1	2	0	0	0	225	2	207	1	28	0	0	0
Hamilton P.H.L.	1124	21	8	5	34	1	1112	6	997	1	8	8	0	0	997	6	975	2	37	0	0	0
Peterborough P.H.L.	425	3	1	0	4	0	424	3	398	2	1	0	0	0	398	0	394	0	6	0	0	0
<b>Province of Ontario</b>	<b>17243</b>	<b>208</b>	<b>89</b>	<b>149</b>	<b>446</b>	<b>32</b>	<b>17143</b>	<b>366</b>	<b>10755</b>	<b>24</b>	<b>114</b>	<b>57</b>	<b>27</b>	<b>0</b>	<b>10533</b>	<b>95</b>	<b>10501</b>	<b>52</b>	<b>2884</b>	<b>617</b>	<b>2415</b>	<b>60</b>
Manitoba	3647	129	3	251	383	2	3582	42	1984	0	7	11	10	0	1984	18	1028	5	1984	296	1062	7
Regina	3710	715	23	69	807	0	3710	22	5643	0	26	36	23	0	3710	61	3710	10	3710	913	3710	9
Saskatoon	2381	0	0	460	460	0	2381	28	2381	1	3	3	4	0	2381	24	2381	5	2381	204	2381	2
Province of Saskatchewan	6091	715	23	529	1267	0	6091	50	8024	1	29	39	27	0	6091	85	6091	15	6091	1117	6091	11
Province of Alberta	14532	2333	52	1337	3722	20	11403	0	11403	10	103	113	105	0	11403	153	11403	98	11403	2263	11403	126
<b>Prairies</b>	<b>24270</b>	<b>3177</b>	<b>78</b>	<b>2117</b>	<b>5372</b>	<b>22</b>	<b>21076</b>	<b>92</b>	<b>21411</b>	<b>11</b>	<b>139</b>	<b>163</b>	<b>142</b>	<b>0</b>	<b>19478</b>	<b>256</b>	<b>18522</b>	<b>118</b>	<b>19478</b>	<b>3676</b>	<b>18556</b>	<b>144</b>
British Columbia	5825	302	62	200	564	8	5825	90	3413	5	26	60	45	0	3413	44	3413	6	2742	856	2742	28
Yukon	105	2	0	2	4	0	105	0	N.A.	N.A.	N.A.	N.A.	N.A.	N.A.	N.A.	N.A.	N.A.	N.A.	N.A.	N.A.	N.A.	N.A.
Northwest Territories	334	102	0	0	102	0	332	0	332	0	0	11	0	0	332	8	332	2	332	65	332	3
Nunavut	28	6	0	0	6	0	28	0	28	0	0	0	0	0	28	5	27	0	28	9	27	0
<b>Territories</b>	<b>467</b>	<b>110</b>	<b>0</b>	<b>2</b>	<b>112</b>	<b>0</b>	<b>465</b>	<b>0</b>	<b>360</b>	<b>0</b>	<b>0</b>	<b>11</b>	<b>0</b>	<b>0</b>	<b>360</b>	<b>13</b>	<b>359</b>	<b>2</b>	<b>360</b>	<b>74</b>	<b>359</b>	<b>3</b>
<b>CANADA</b>	<b>73977</b>	<b>3822</b>	<b>229</b>	<b>4201</b>	<b>8252</b>	<b>95</b>	<b>69700</b>	<b>1787</b>	<b>46760</b>	<b>72</b>	<b>455</b>	<b>362</b>	<b>270</b>	<b>0</b>	<b>44641</b>	<b>805</b>	<b>43321</b>	<b>219</b>	<b>27585</b>	<b>5621</b>	<b>33726</b>	<b>390</b>

Specimens from YT, NT and NU are sent to reference laboratories in other provinces and reported results reflect specimens identified as originating from YT, NT or NU.

Results from British Columbia comprise of specimens from the following sites: BC Children's and Women's Hospital, Powell River Hospital, St. Paul's Hospital, Vancouver General Hospital, Victoria General Hospital, Interior Health Authority sites and Northern Health Authority sites.

Delays in the reporting of data may cause data to change retrospectively.

Due to reporting delays, the sum of weekly report totals do not add up to cumulative totals.

Figure 1: Number positive laboratory tests for other respiratory viruses by report week, Canada, 2018-19

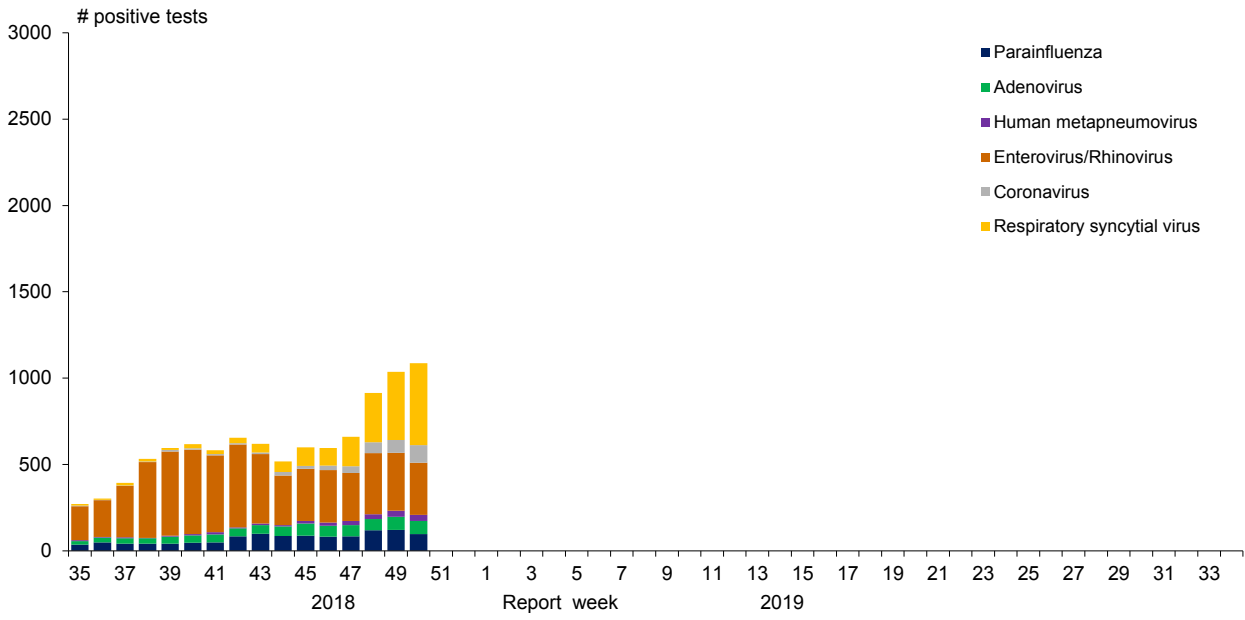


Figure 2: Positive Influenza Tests (%) in Canada by Region by Week of Report

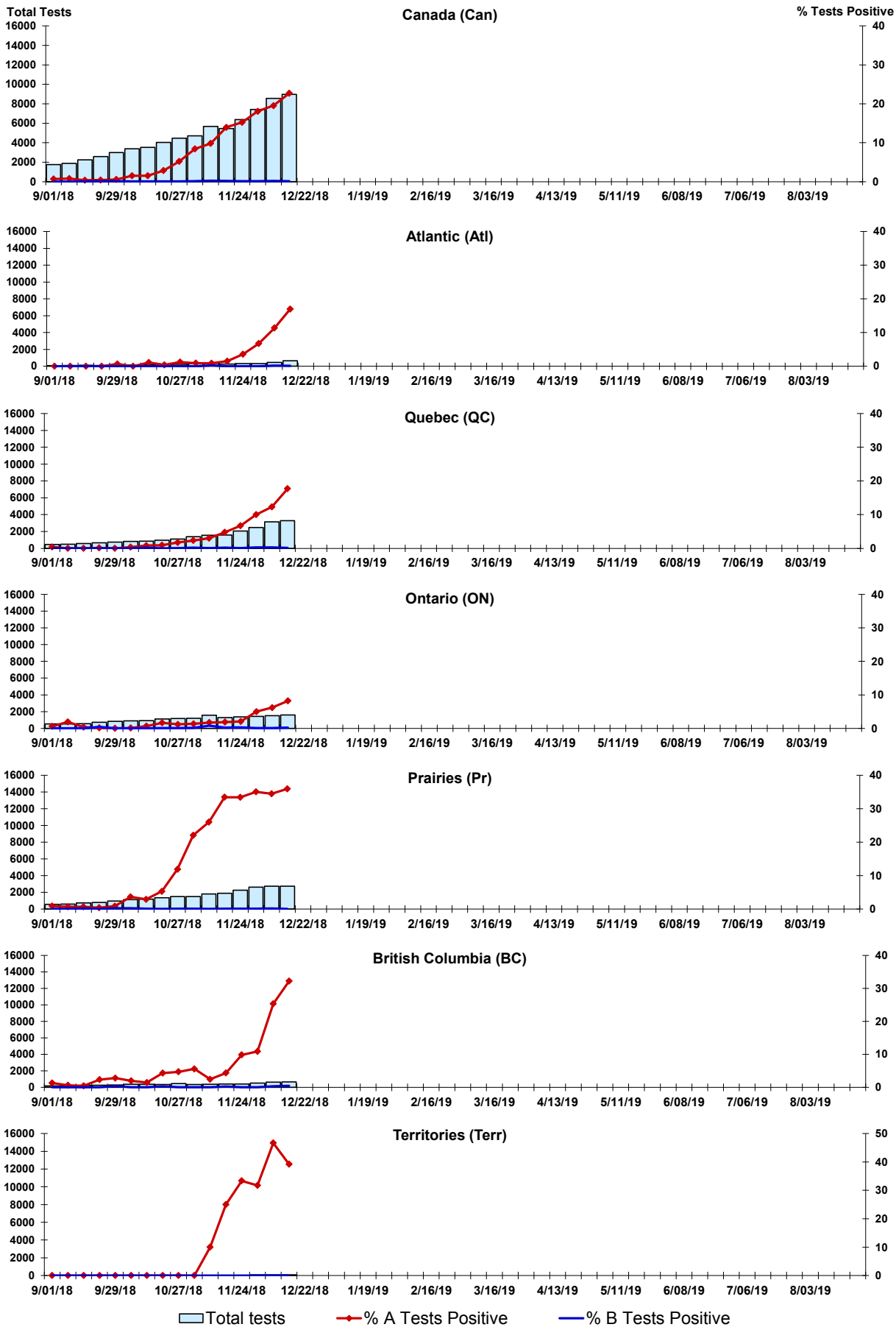


Figure 3: Positive Respiratory syncytial virus (RSV) Tests (%) in Canada by Region by Week of Report

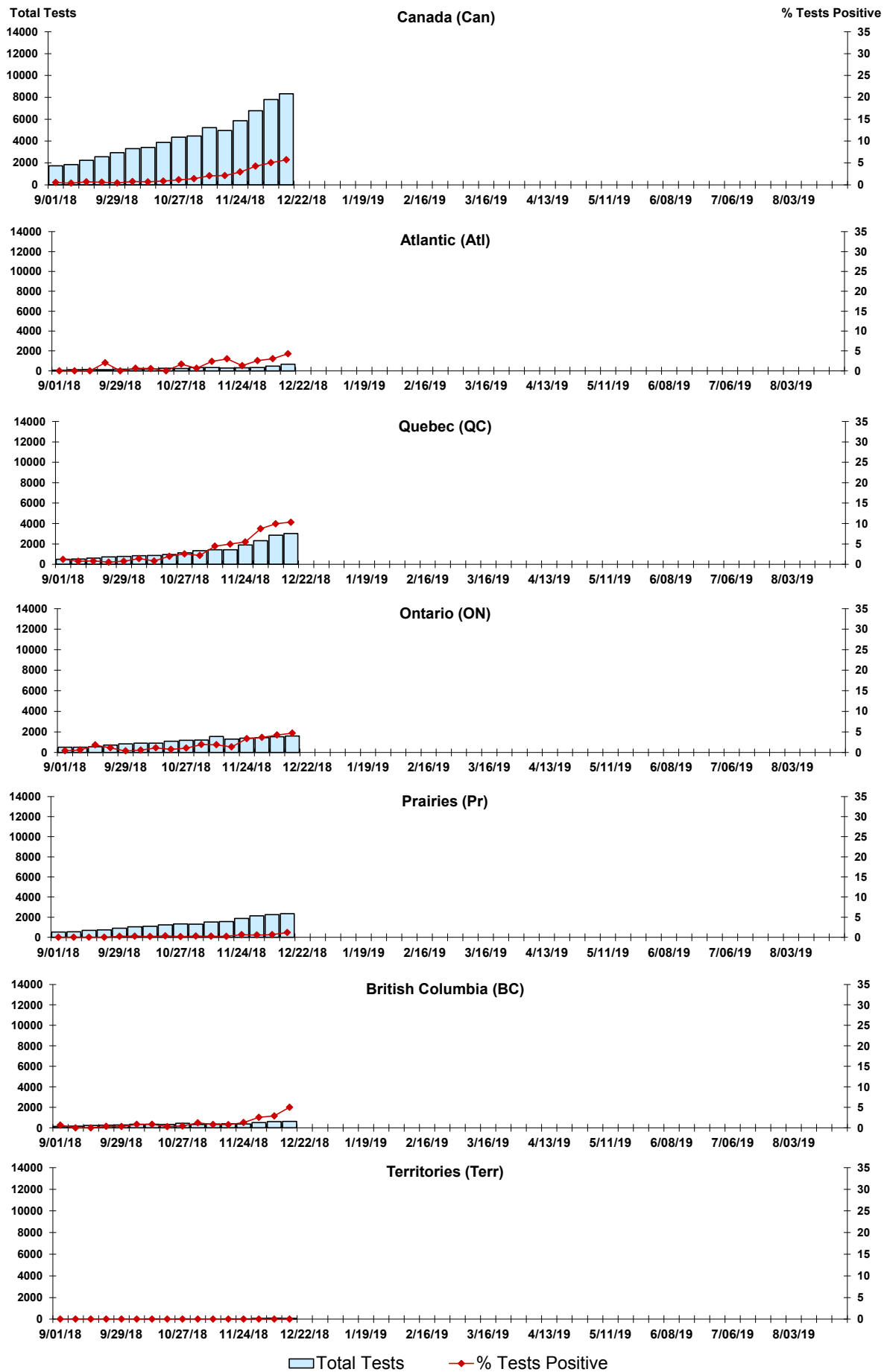


Figure 4: Positive Parainfluenza (PIV) Tests (%) in Canada by Region by Week of Report

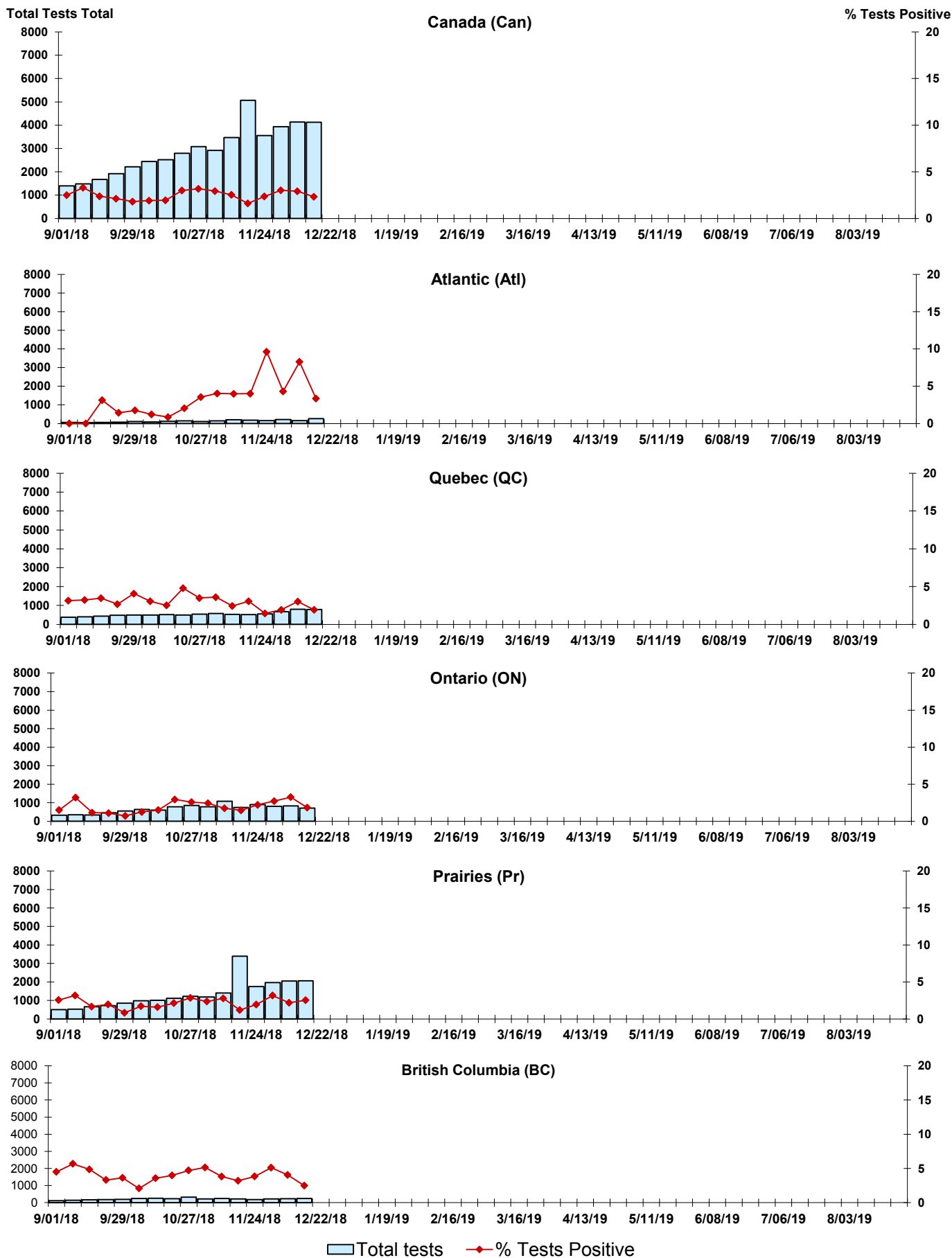


Figure 5: Positive Adenovirus (adeno) Tests (%) in Canada by Region by Week of Report

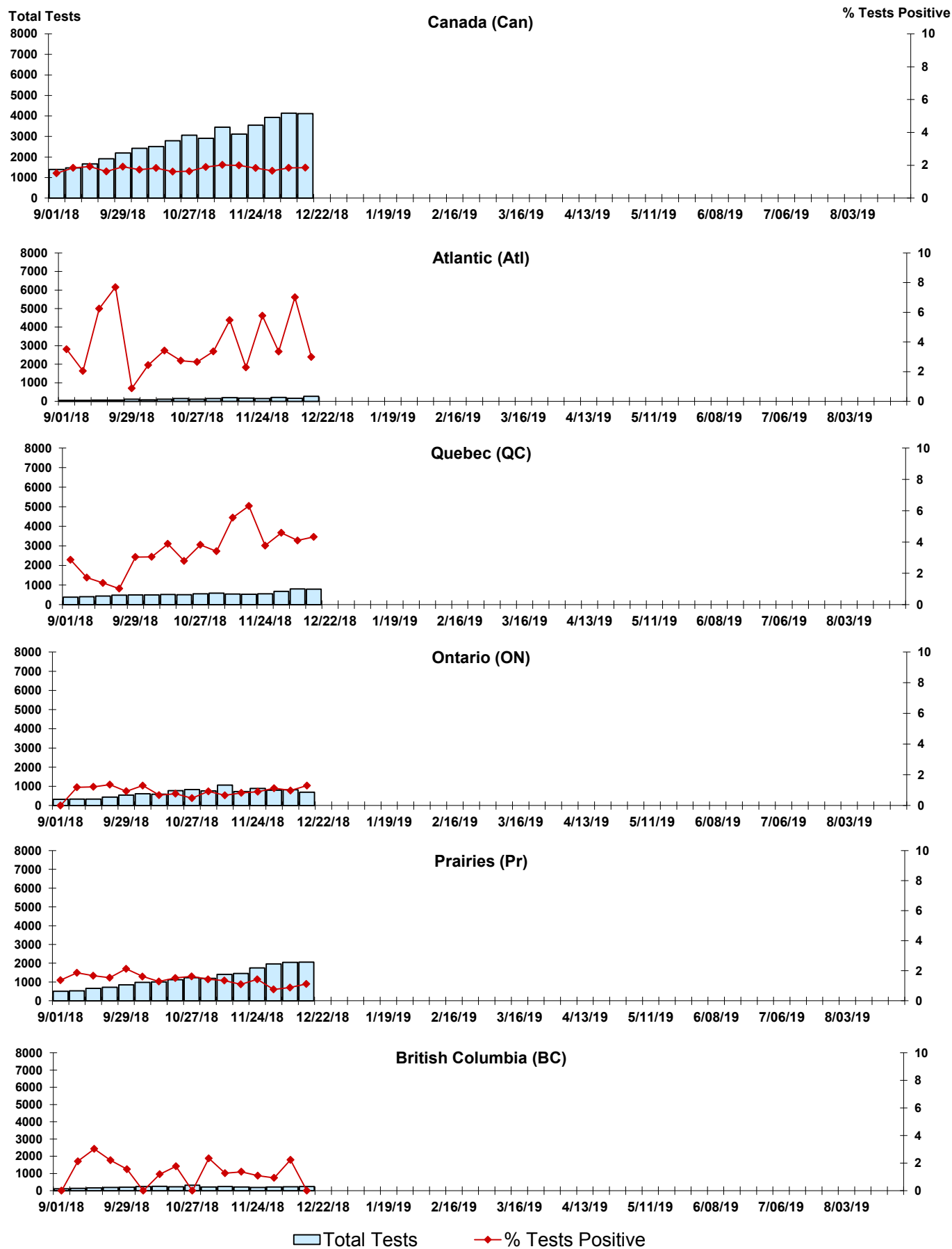
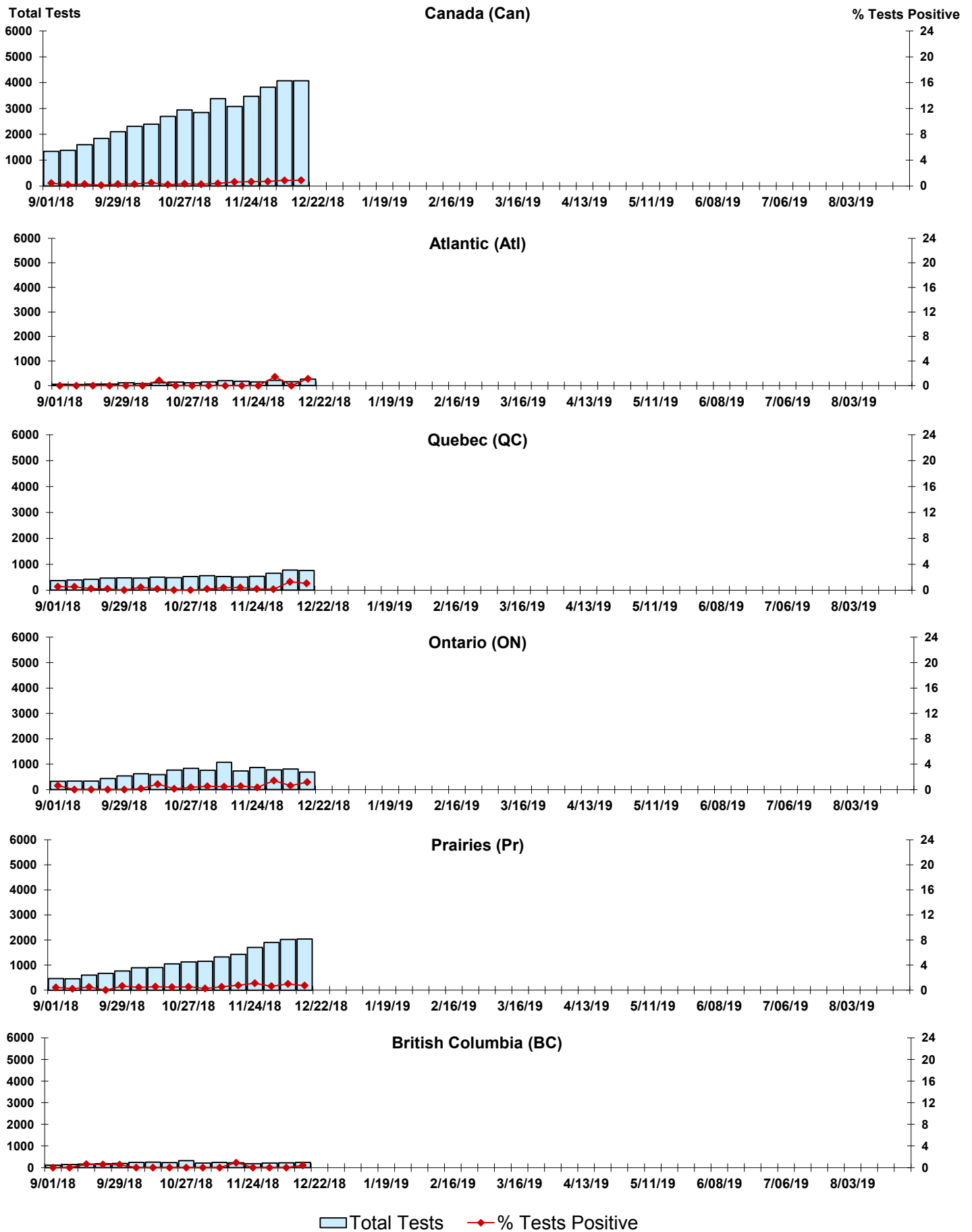


Figure 6: Positive human metapneumovirus (hMPV) Tests (%) in Canada by Region by Week of Report



Legend: Total Tests (light blue bar), % Tests Positive (red line with diamond)



Figure 7: Positive Enterovirus/Rhinovirus (entero/rhino) Tests (%) in Canada by Region by Week of Report

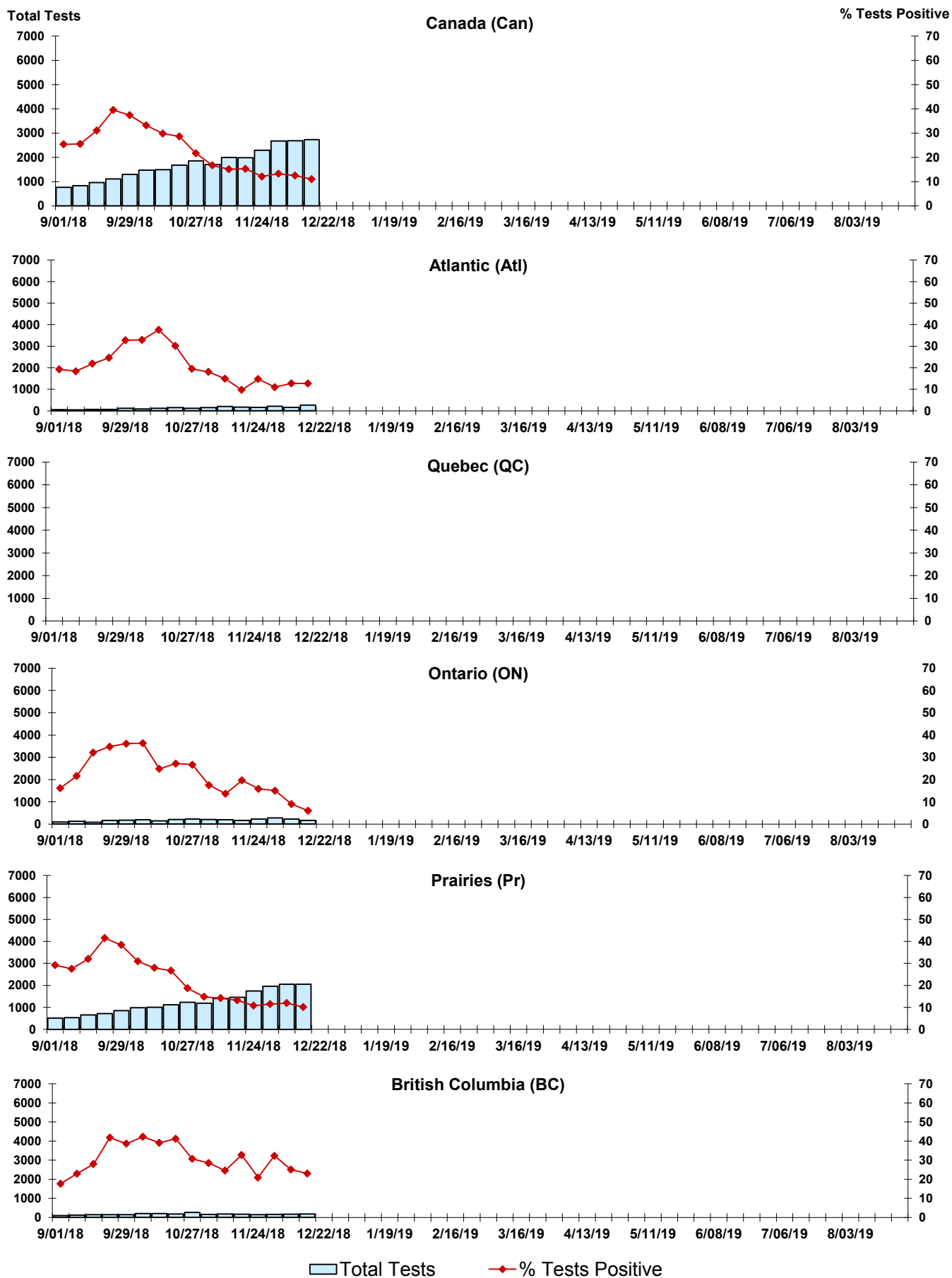
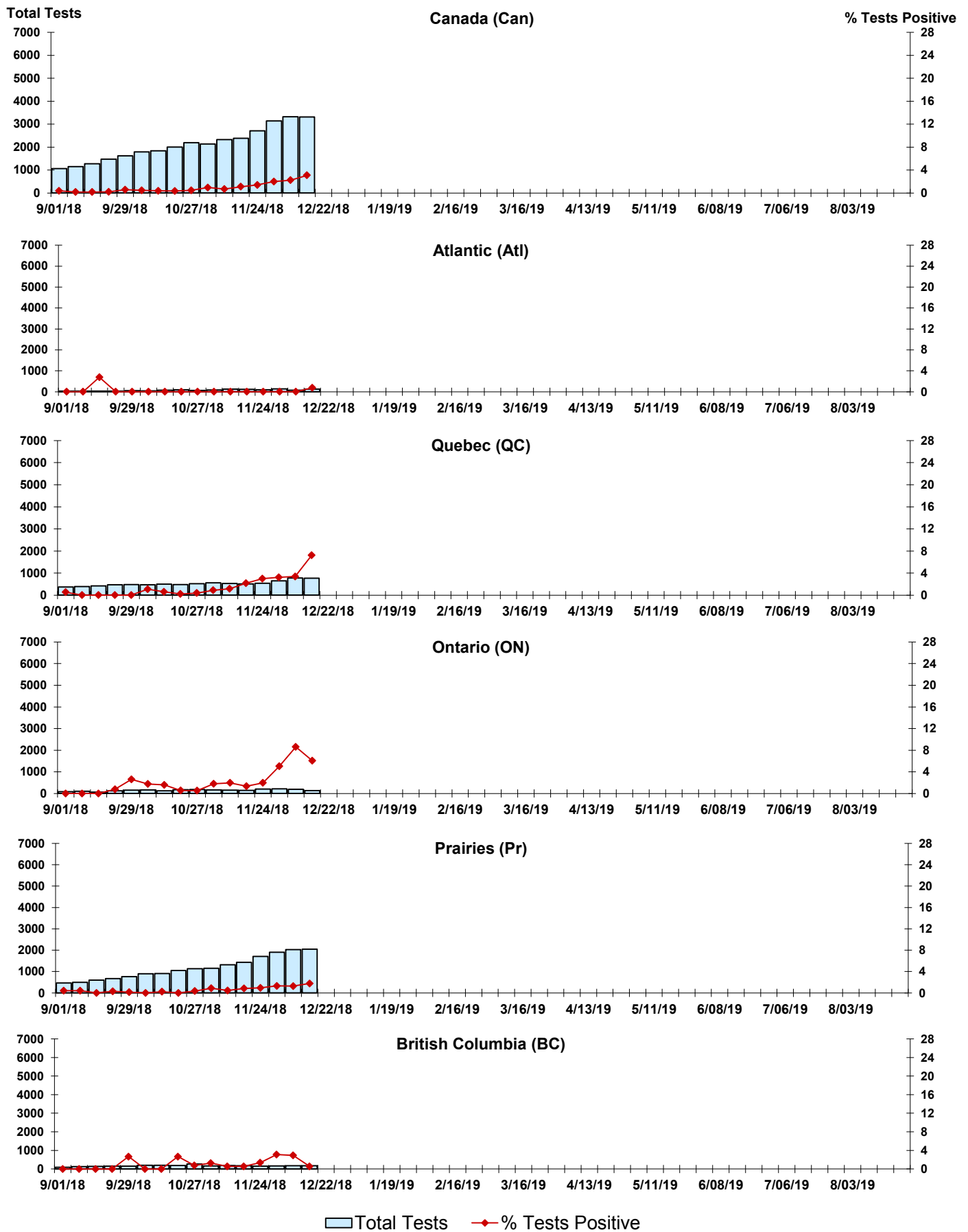


Figure 8: Positive Coronavirus (coron) Tests (%) in Canada by Region by Week of Report



## Abbreviations:

A(H1N1)pdm09: Influenza A(H1N1)pdm09

A(H3): Influenza A(H3N2)

A (UnS): Influenza A (Unsubtyped)

Adeno: Adenovirus

CHEO: Children's Hospital of Eastern Ontario

Coron: Coronavirus

Entero: Enterovirus

hMPV: human metapneumovirus

HSC: Health Sciences Centre

N.A.: Not Applicable

P.H.L.: Public Health Laboratory

P.H.O.L.: Public Health Ontario Laboratory

PIV: Parainfluenza

Rhino: Rhinovirus

RSV: Respiratory syncytial virus

UHN: University Health Network

## Notes:

Specimens from Yukon (YT), Northwest Territories (NT) and Nunavut (NU) are sent to reference laboratories in other provinces. Results reported for the Territories reflect the number of specimens that are identified as originating from YT, NT or NU.

Delays in the reporting of data may cause data to change retrospectively.

Due to reporting delays, the sum of weekly report totals do not add up to cumulative totals.