

Respiratory Virus Detections in Canada

Respiratory Virus Report, Week 52 - ending December 29, 2018

The Respiratory Virus Detection Surveillance System collects data from select laboratories across Canada on the number of tests performed and the number of tests positive for influenza and other respiratory viruses. Data are reported on a weekly basis year-round to the Centre for Immunization and Respiratory Infectious Diseases (CIRID), Public Health Agency of Canada. These data are also summarized in the weekly FluWatch report.

Table 1: Respiratory Virus Detections/Isolations for the week ending December 29, 2018 (Reporting Week 201852)

Reporting Laboratory	Flu Tested	A(H1N1)pdm09 Positive	A(H3) Positive	A(UnS) Positive	Total Flu A Positive	Total Flu B Positive	RSV Tested	RSV Positive	PIV Tested	PIV 1 Positive	PIV 2 Positive	PIV 3 Positive	PIV 4 Positive	Other PIV Positive	Adeno Tested	Adeno Positive	hMPV Tested	hMPV Positive	Entero/Rhino Tested	Entero/Rhino Positive	Coron Tested	Coron Positive
Newfoundland	118	0	0	23	23	0	118	13	118	0	0	2	0	0	118	1	118	1	118	12	N.A.	N.A.
Prince Edward Island	22	9	0	0	9	0	22	1	2	0	0	0	0	0	2	0	2	0	2	1	2	0
Nova Scotia	87	0	0	9	9	0	87	4	2	0	0	0	0	0	2	0	2	0	2	0	2	1
New Brunswick	524	0	0	211	211	0	524	44	83	0	2	1	5	0	83	6	83	1	83	16	83	1
Atlantic	751	9	0	243	252	0	751	62	205	0	2	3	5	0	205	7	205	2	205	29	87	2
Région Nord-Est	74	0	0	27	27	0	47	0	0	0	0	0	0	0	0	0	0	0	N.A.	N.A.	0	0
Québec-Chaudière-Appalaches	100	0	0	9	9	0	0	0	0	0	0	0	0	0	0	0	0	0	N.A.	N.A.	0	0
Centre-du-Québec	246	0	0	153	153	1	244	18	0	0	0	0	0	0	0	0	0	0	N.A.	N.A.	0	0
Montréal-Laval	727	0	0	164	164	0	690	93	445	0	2	2	0	0	445	8	434	5	N.A.	N.A.	434	44
Ouest du Québec	821	0	0	252	252	1	822	120	0	0	0	0	0	0	0	0	0	0	N.A.	N.A.	0	0
Montérégie	497	0	0	152	153	3	497	42	0	0	0	0	0	0	0	0	0	0	N.A.	N.A.	0	0
Province of Québec	2465	0	0	757	758	5	2300	273	445	0	2	2	0	0	445	8	434	5	N.A.	N.A.	434	44
Ottawa P.H.L.	8	3	0	1	4	0	8	0	1	0	0	0	0	0	1	0	1	0	0	0	0	0
CHEO - Ottawa	271	0	0	27	27	0	271	69	15	0	1	0	1	0	17	0	17	0	17	1	15	0
Kingston P.H.L.	29	2	1	0	3	0	29	0	6	0	0	0	0	0	6	0	6	0	0	0	0	0
UHN / Mount Sinai Hospital	430	0	1	69	70	0	430	41	8	0	0	0	0	0	0	0	8	0	N.A.	N.A.	N.A.	N.A.
P.H.O.L. - Toronto	433	53	19	34	106	2	407	0	248	0	1	0	0	0	248	0	245	5	3	0	0	0
Sick Kids Hospital - Toronto	140	13	0	14	27	0	84	18	84	2	1	1	2	0	84	6	84	5	84	7	84	14
Sunnybrook & Women's College HSC	85	5	2	0	7	0	85	7	85	1	0	0	0	0	85	0	85	1	85	2	85	3
Sault Ste. Marie P.H.L.	10	0	0	0	0	0	10	0	10	0	0	0	0	0	10	0	9	1	1	0	0	0
Timmins P.H.L.	18	8	0	0	8	0	10	0	10	0	0	0	0	0	10	0	10	1	0	0	0	0
St. Joseph's - London	190	0	0	16	16	0	190	25	46	0	0	0	1	0	46	0	46	1	46	3	23	3
London P.H.L.	139	6	1	15	22	0	139	0	86	1	1	1	0	0	86	1	85	3	1	0	0	0
Orillia P.H.L.	40	2	1	0	3	0	39	0	8	0	0	0	0	0	8	0	8	0	0	0	0	0
Thunder Bay P.H.L.	3	1	0	0	1	0	3	0	2	0	0	0	0	0	2	0	2	0	0	0	0	0
Sudbury P.H.L.	17	1	0	0	1	0	16	2	16	0	0	0	0	0	16	0	15	0	1	0	0	0
Hamilton P.H.L.	158	6	3	14	23	0	148	0	82	1	3	0	0	0	82	1	82	1	0	0	0	0
Peterborough P.H.L.	22	5	0	0	5	0	19	0	4	0	0	0	0	0	4	0	4	0	0	0	0	0
Province of Ontario	1993	105	28	190	323	2	1888	162	711	5	7	2	4	0	705	8	707	18	246	14	207	20
Manitoba	275	17	0	82	99	0	270	16	91	0	1	0	0	0	91	1	59	2	91	4	59	2
Regina	0	0	0	0	0	0	0	0	0	0	0	0	0	0	0	0	0	0	0	0	0	0
Saskatoon	205	0	0	55	55	0	205	14	205	0	0	0	1	0	205	2	205	2	205	9	205	1
Province of Saskatchewan	205	0	0	55	55	0	205	14	205	0	0	0	1	0	205	2	205	2	205	9	205	1
Province of Alberta	1354	289	7	36	332	6	1239	0	1239	1	12	18	14	0	1239	14	1239	34	1239	151	1239	70
Prairies	1834	306	7	173	486	6	1714	30	1535	1	13	18	15	0	1535	17	1503	38	1535	164	1503	73
British Columbia	910	306	4	184	494	0	910	63	213	1	2	5	4	0	213	2	213	1	135	16	135	4
Yukon	3	1	0	1	2	0	3	1	N.A.	N.A.	N.A.	N.A.	N.A.	N.A.	N.A.	N.A.	N.A.	N.A.	N.A.	N.A.	N.A.	N.A.
Northwest Territories	14	4	1	0	5	0	14	0	14	0	0	0	1	0	14	0	14	0	14	1	14	0
Nunavut	2	0	0	0	0	0	2	0	2	0	0	0	0	0	2	0	2	0	2	0	2	0
Territories	19	5	1	1	7	0	19	1	16	0	0	0	1	0	16	0	16	0	16	1	16	0
CANADA	7972	731	40	1548	2320	13	7582	591	3125	7	26	30	29	0	3119	42	3078	64	2137	224	2382	143

Specimens from Yukon (YT), Northwest Territories (NT) and Nunavut (NU) are sent to reference laboratories in other provinces and reported results reflect specimens identified as originating from YT, NT or NU.

Results from British Columbia comprise of specimens from the following sites: BC Children's and Women's Hospital, Powell River Hospital, St. Paul's Hospital, Vancouver General Hospital, Victoria General Hospital, Interior Health Authority sites and Northern Health Authority sites.

Delays in the reporting of data may cause data to change retrospectively.

Figure 1: Number positive laboratory tests for other respiratory viruses by report week, Canada, 2018-19

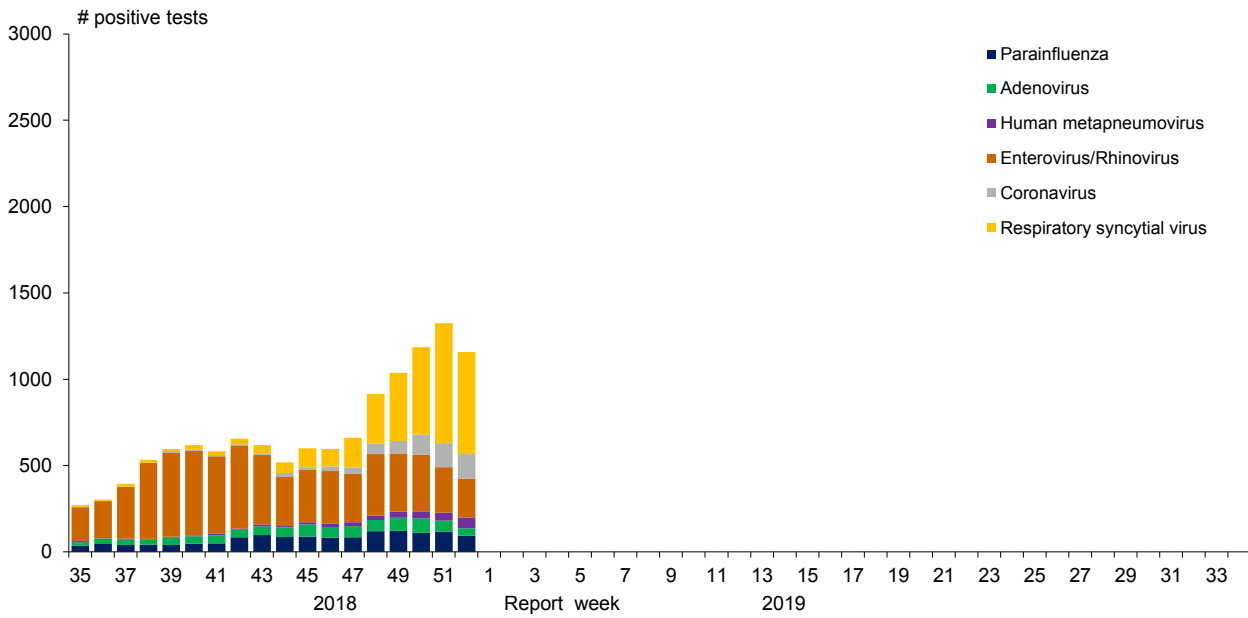


Figure 2: Positive Influenza Tests (%) in Canada by Region by Week of Report

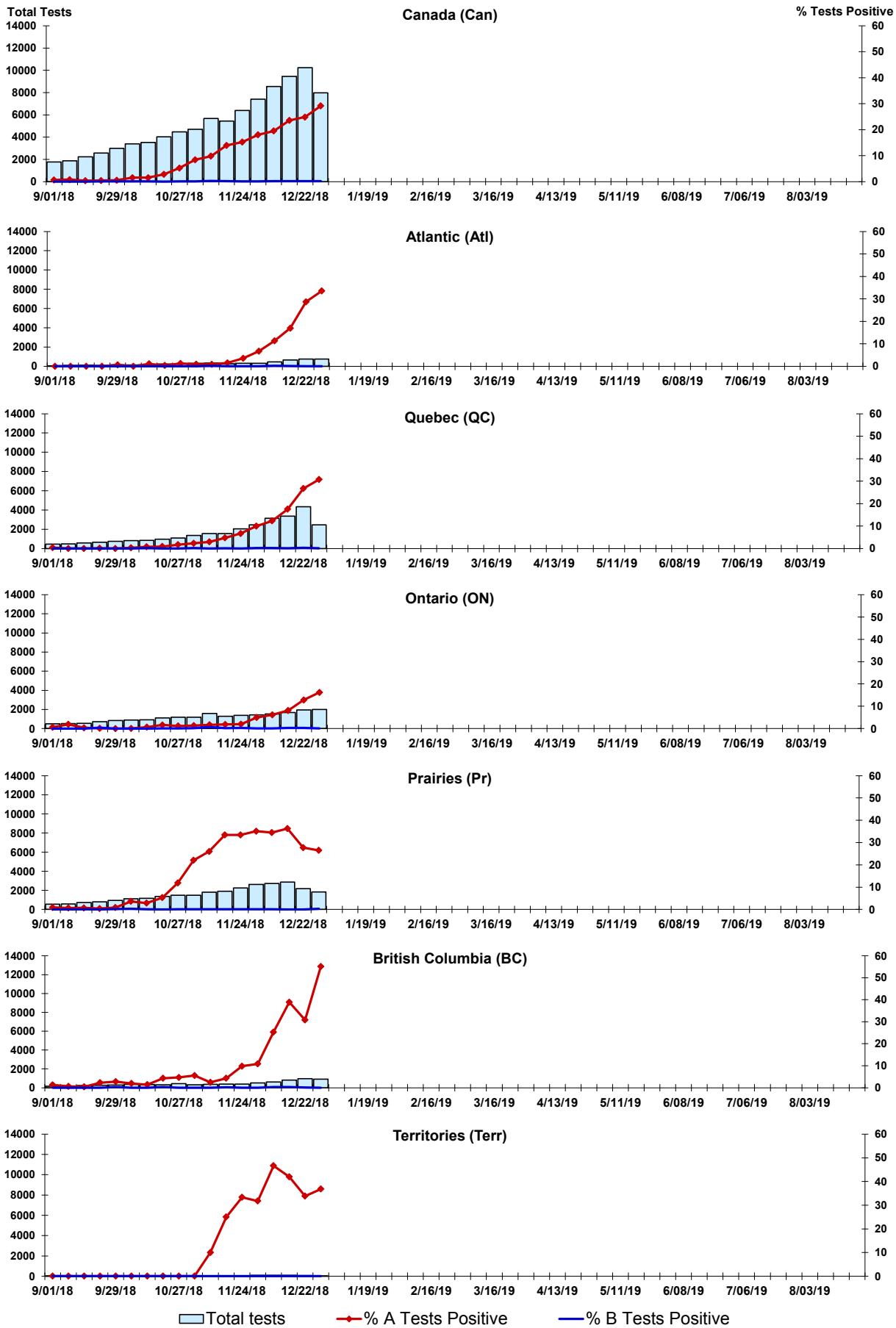


Figure 3: Positive Respiratory syncytial virus (RSV) Tests (%) in Canada by Region by Week of Report

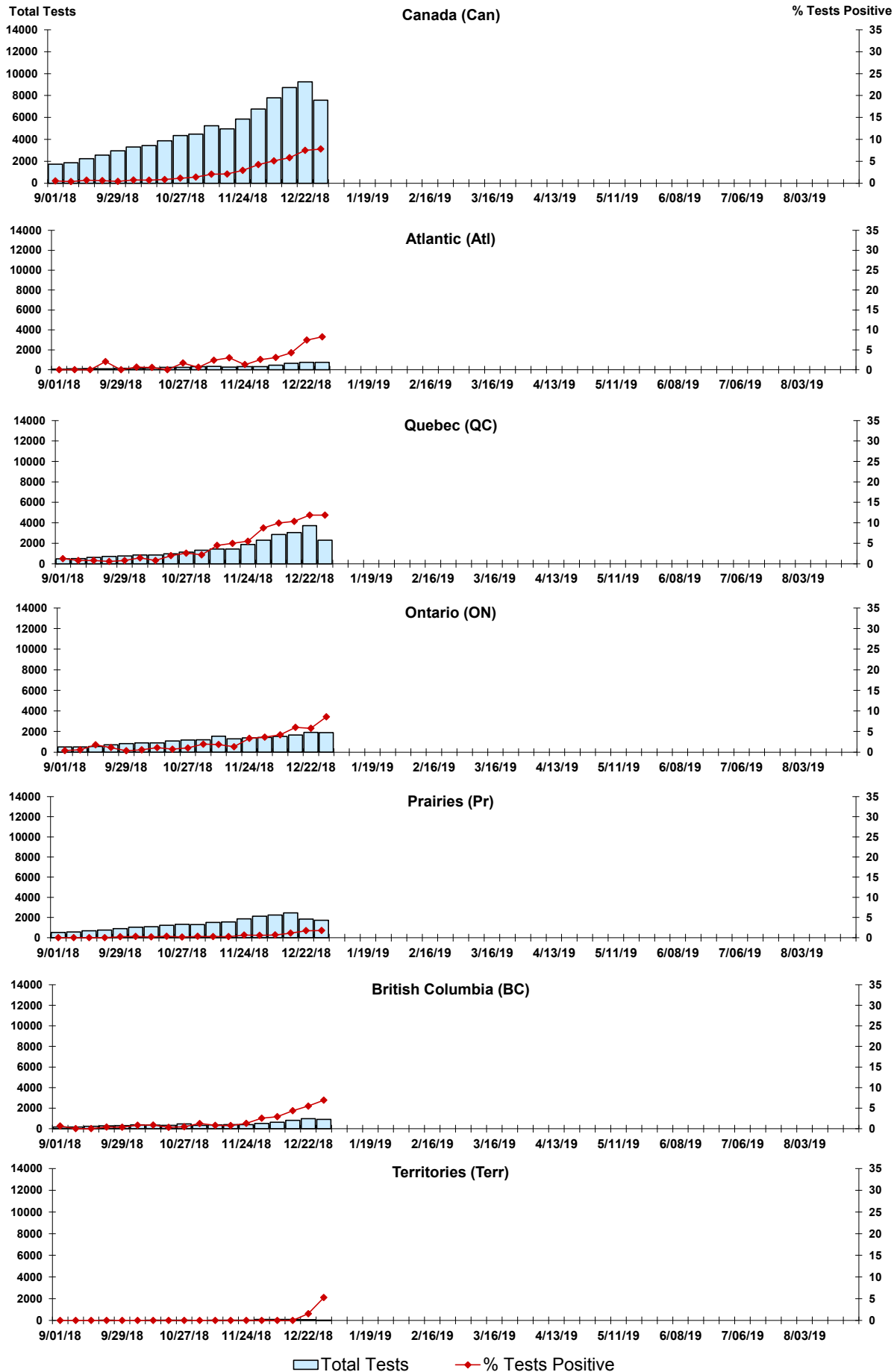


Figure 4: Positive Parainfluenza (PIV) Tests (%) in Canada by Region by Week of Report

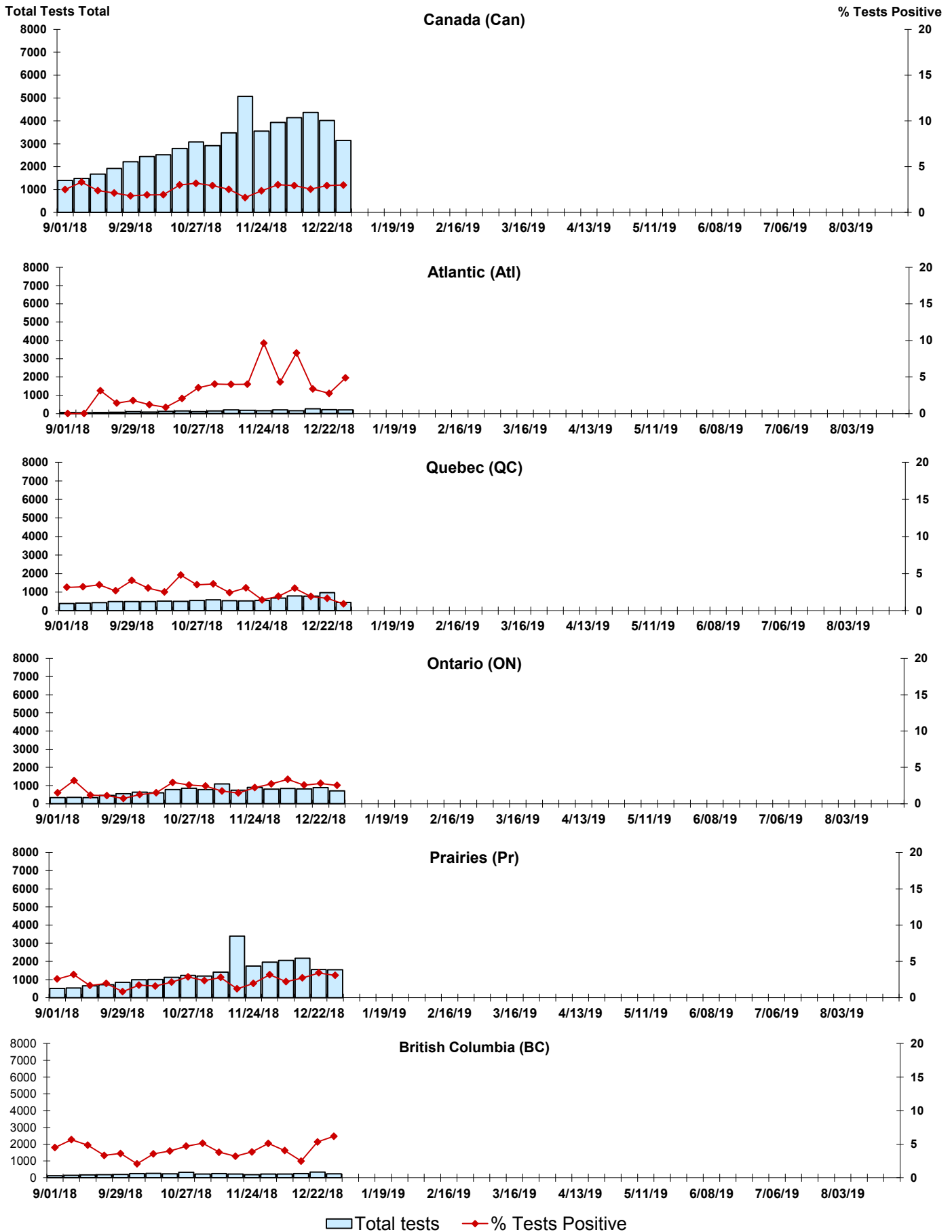


Figure 5: Positive Adenovirus (adeno) Tests (%) in Canada by Region by Week of Report

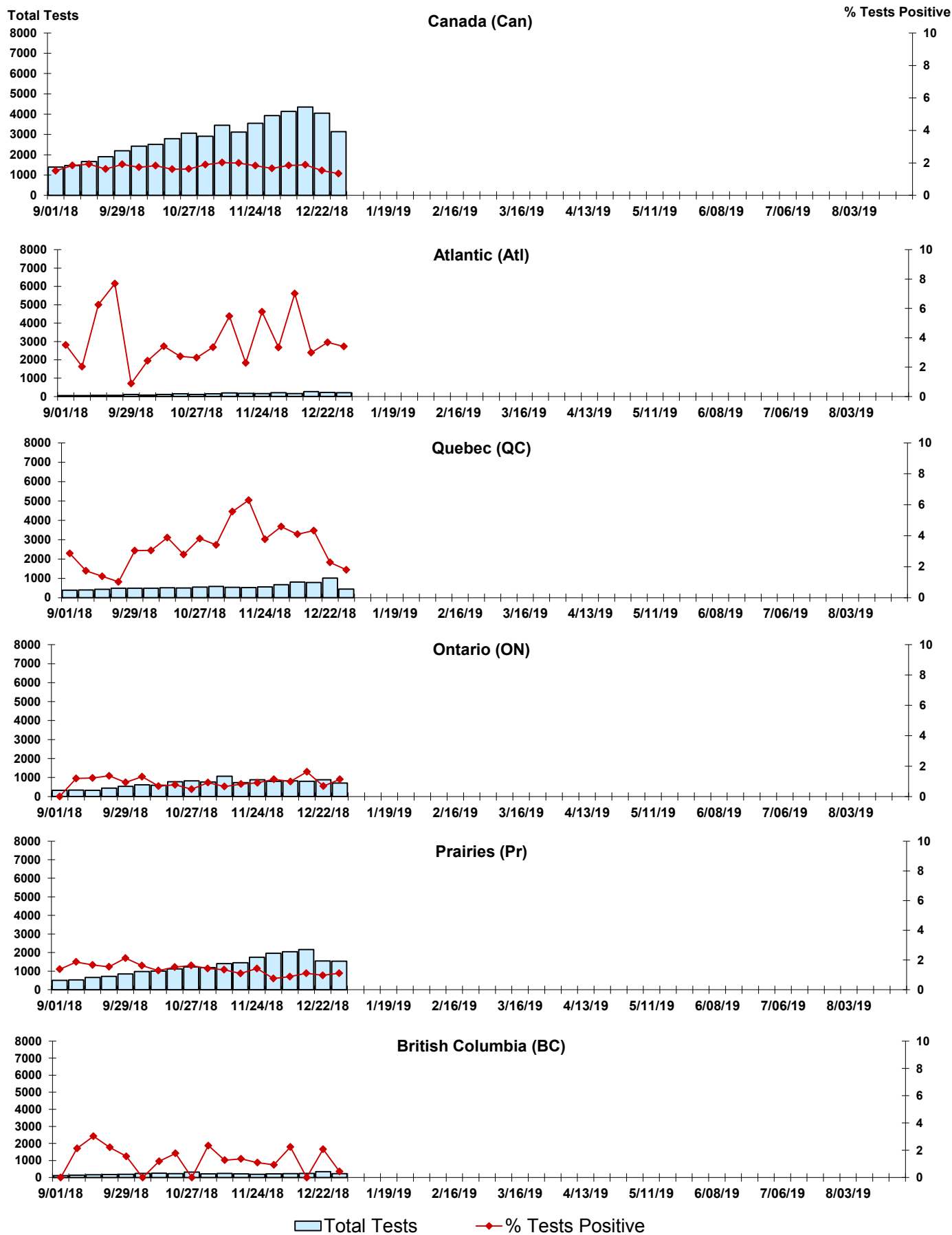


Figure 6: Positive human metapneumovirus (hMPV) Tests (%) in Canada by Region by Week of Report

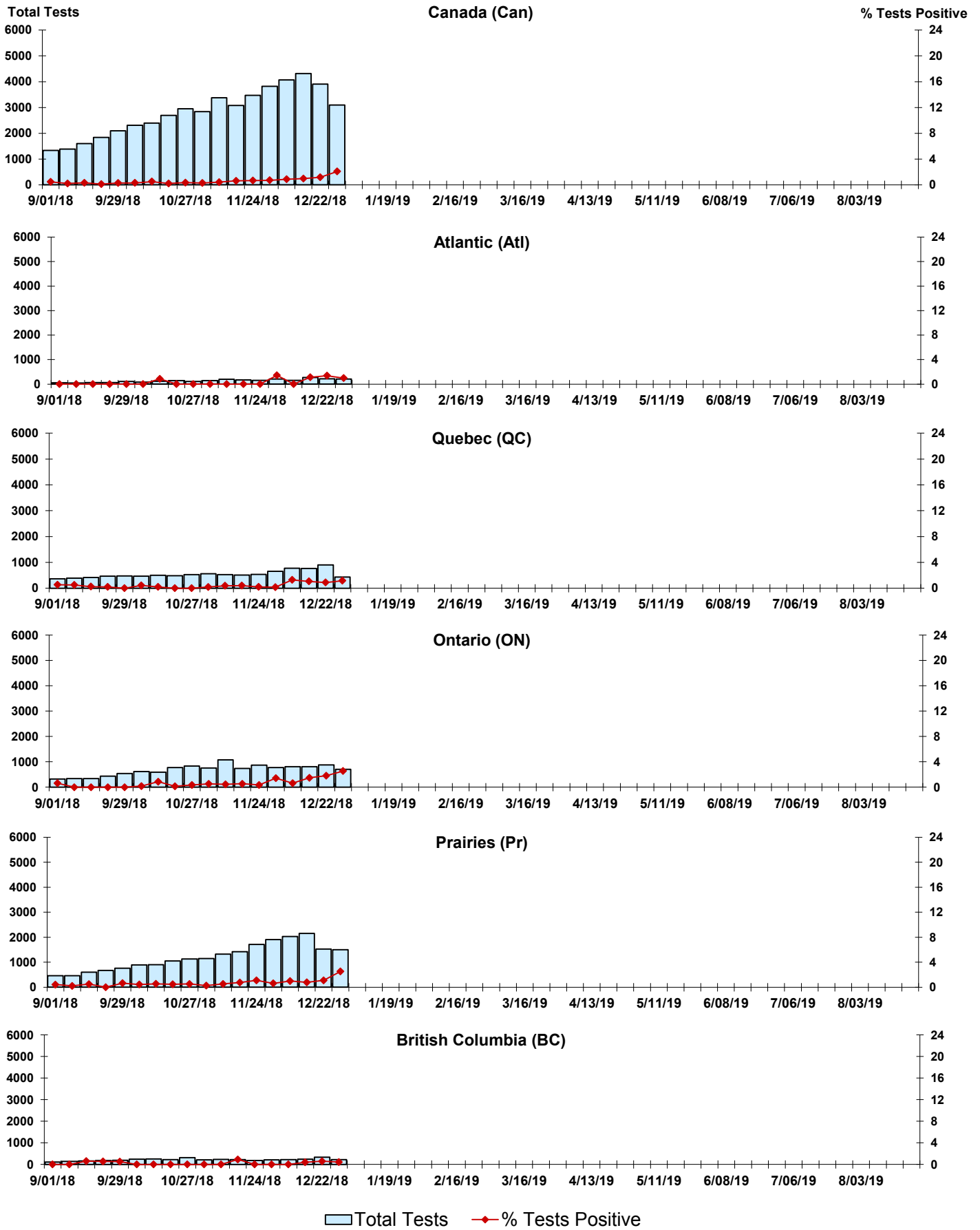


Figure 7: Positive Enterovirus/Rhinovirus (entero/rhino) Tests (%) in Canada by Region by Week of Report

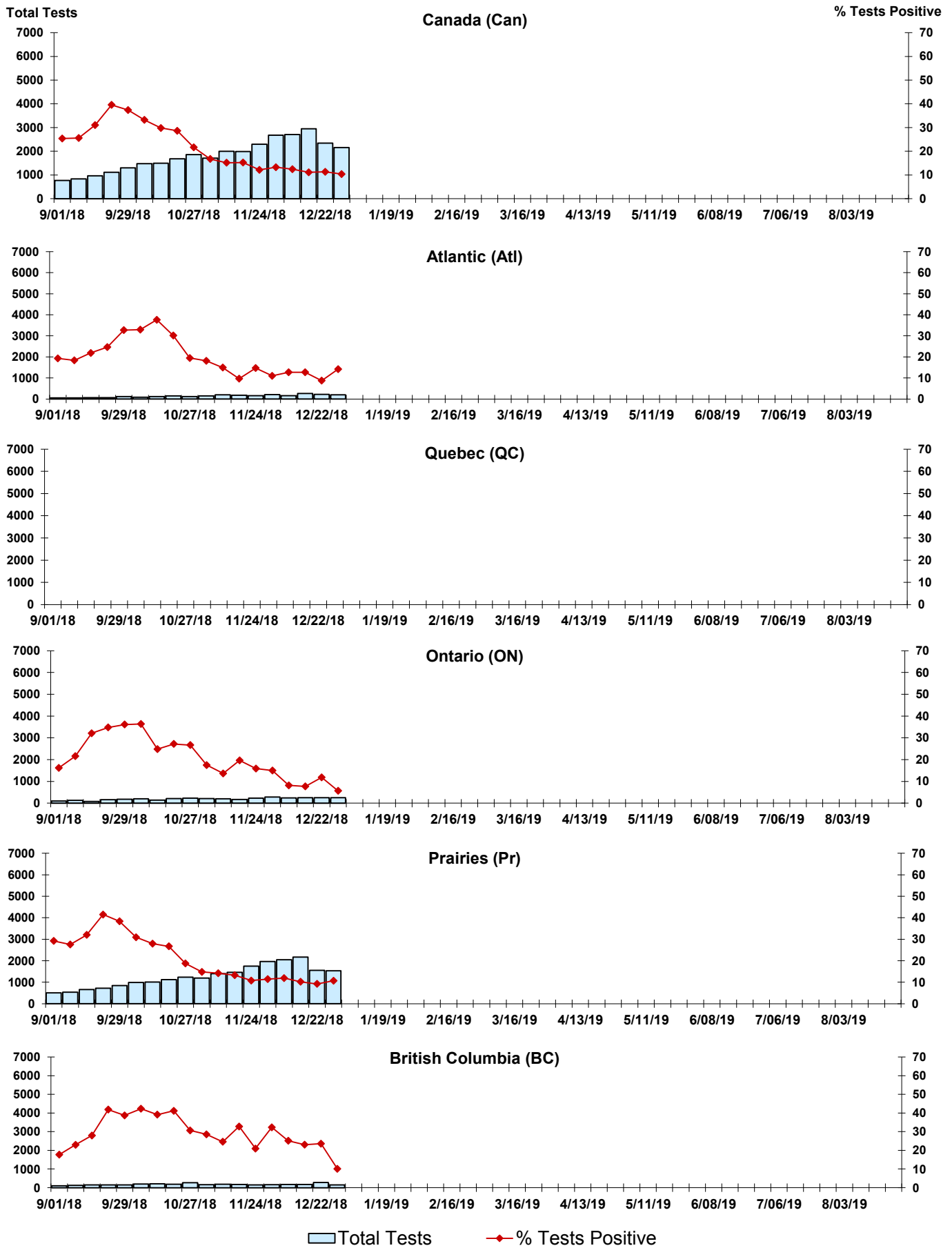
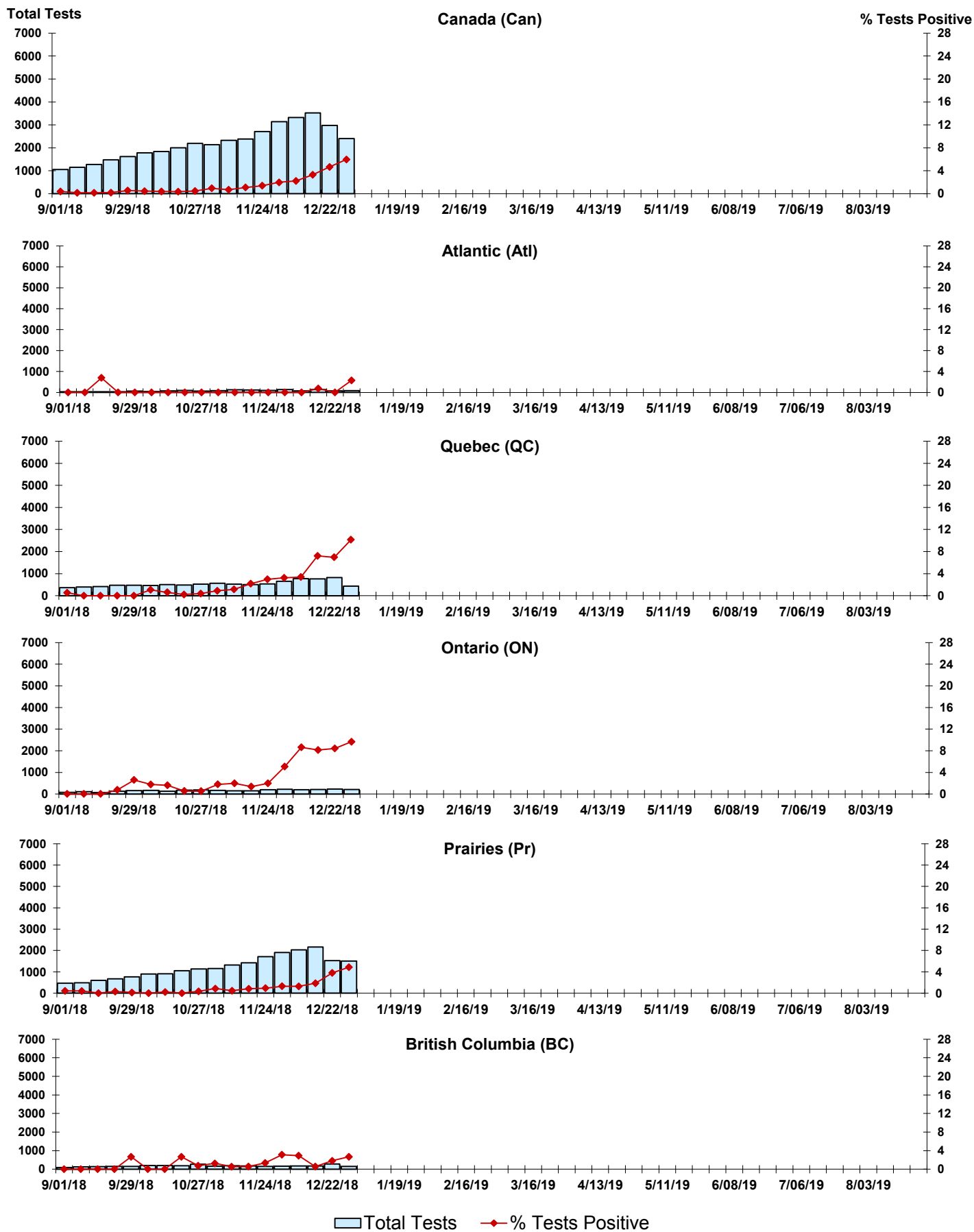


Figure 8: Positive Coronavirus (coron) Tests (%) in Canada by Region by Week of Report



Abbreviations:

A(H1N1)pdm09: Influenza A(H1N1)pdm09

A(H3): Influenza A(H3N2)

A (UnS): Influenza A (Unsubtyped)

Adeno: Adenovirus

CHEO: Children's Hospital of Eastern Ontario

Coron: Coronavirus

Entero: Enterovirus

hMPV: human metapneumovirus

HSC: Health Sciences Centre

N.A.: Not Applicable

P.H.L.: Public Health Laboratory

P.H.O.L.: Public Health Ontario Laboratory

PIV: Parainfluenza

Rhino: Rhinovirus

RSV: Respiratory syncytial virus

UHN: University Health Network

Notes:

Specimens from Yukon (YT), Northwest Territories (NT) and Nunavut (NU) are sent to reference laboratories in other provinces. Results reported for the Territories reflect the number of specimens that are identified as originating from YT, NT or NU.

Delays in the reporting of data may cause data to change retrospectively.

Due to reporting delays, the sum of weekly report totals do not add up to cumulative totals.