

Respiratory Virus Detections in Canada

Respiratory Virus Report, Week 03 - ending January 19, 2019

The Respiratory Virus Detection Surveillance System collects data from select laboratories across Canada on the number of tests performed and the number of tests positive for influenza and other respiratory viruses. Data are reported on a weekly basis year-round to the Centre for Immunization and Respiratory Infectious Diseases (CIRID), Public Health Agency of Canada. These data are also summarized in the weekly FluWatch report.

Table 1: Respiratory Virus Detections/Isolations for the week ending January 19, 2019 (Reporting Week 201903)

Reporting Laboratory	Flu Tested	A(H1N1)pdm09 Positive	A(H3) Positive	A(UnS) Positive	Total Flu A Positive	Total Flu B Positive	RSV Tested	RSV Positive	PIV Tested	PIV 1 Positive	PIV 2 Positive	PIV 3 Positive	PIV 4 Positive	Other PIV Positive	Adeno Tested	Adeno Positive	hMPV Tested	hMPV Positive	Entero/Rhino Tested	Entero/Rhino Positive	Coron Tested	Coron Positive
Newfoundland	174	0	0	52	52	0	174	18	174	0	3	6	0	0	174	1	174	0	174	6	N.A.	N.A.
Prince Edward Island	72	32	0	0	32	0	72	5	1	0	0	0	0	0	1	0	1	0	1	0	1	0
Nova Scotia	132	0	0	17	17	1	133	14	15	0	0	2	0	0	15	0	15	0	15	0	15	1
New Brunswick	687	25	3	186	214	0	687	76	137	0	0	0	1	0	137	4	137	3	137	5	137	8
Atlantic	1065	57	3	255	315	1	1066	113	327	0	3	8	1	0	327	5	327	3	327	11	153	9
Région Nord-Est	345	0	0	72	72	0	239	32	0	0	0	0	0	0	0	0	0	0	N.A.	N.A.	0	0
Québec-Chaudière-Appalaches	747	0	0	181	181	2	782	92	92	0	0	1	1	0	92	2	75	0	N.A.	N.A.	73	0
Centre-du-Québec	997	0	0	231	231	19	787	98	0	0	0	0	0	0	0	0	0	0	N.A.	N.A.	0	0
Montréal-Laval	1679	0	0	307	307	3	1591	189	737	7	3	2	1	0	737	13	717	13	N.A.	N.A.	717	59
Ouest du Québec	721	0	0	181	181	1	692	104	0	0	0	0	0	0	0	0	0	0	N.A.	N.A.	0	0
Montréal	438	0	0	79	79	0	438	42	0	0	0	0	0	0	0	0	0	0	N.A.	N.A.	0	0
Province of Québec	4927	0	0	1051	1051	25	4529	557	829	7	3	3	2	0	829	15	792	13	N.A.	N.A.	790	59
Ottawa P.H.L.	51	12	3	1	16	0	50	6	19	0	1	0	0	0	19	0	18	0	1	0	0	0
CHEO - Ottawa	326	0	0	55	55	1	326	70	22	0	0	1	0	0	22	0	22	1	22	7	22	2
Kingston P.H.L.	34	1	1	1	3	0	34	9	17	0	0	0	0	0	17	0	17	0	1	0	0	0
UHN / Mount Sinai Hospital	520	3	5	44	52	2	520	42	33	0	3	0	0	0	0	0	33	0	N.A.	N.A.	N.A.	N.A.
P.H.O.L. - Toronto	588	95	37	14	146	1	552	35	348	0	2	1	0	0	348	0	341	0	7	0	0	0
Sick Kids Hospital - Toronto	96	11	1	10	22	0	76	7	76	1	1	3	1	0	76	5	76	3	76	11	76	5
Sunnybrook & Women's College HSC	76	5	4	2	11	0	76	3	76	0	1	0	0	0	76	0	76	2	76	5	76	6
Sault Ste. Marie P.H.L.	17	4	0	0	4	0	16	3	11	0	0	0	0	0	11	0	10	0	1	0	0	0
Timmins P.H.L.	15	6	0	0	6	0	9	0	9	0	0	0	0	0	9	0	9	0	0	0	0	0
St. Joseph's - London	200	0	0	27	27	0	193	16	57	0	0	0	0	0	57	0	57	5	30	2	0	0
London P.H.L.	182	8	7	16	31	1	182	38	96	0	2	0	0	0	96	0	93	2	3	0	0	0
Orillia P.H.L.	60	12	1	2	15	0	60	15	21	0	0	0	0	0	21	0	20	0	1	0	0	0
Thunder Bay P.H.L.	12	0	0	0	0	0	11	1	12	0	0	2	0	0	11	0	11	1	2	0	0	0
Sudbury P.H.L.	43	3	0	0	3	0	40	2	35	0	0	0	0	0	35	0	30	1	5	0	0	0
Hamilton P.H.L.	154	4	8	11	23	0	148	7	105	0	0	1	0	0	105	0	105	1	0	0	0	0
Peterborough P.H.L.	43	1	2	2	5	2	43	4	19	0	0	0	0	0	19	0	19	0	0	0	0	0
Province of Ontario	2417	165	69	185	419	7	2336	258	956	1	10	8	1	0	922	5	937	16	258	26	207	15
Manitoba	377	10	1	48	59	1	371	33	75	0	0	0	0	0	75	0	59	6	75	1	59	8
Regina	265	41	1	5	47	0	265	39	265	0	4	4	1	0	265	5	265	5	265	31	265	14
Saskatoon	228	0	0	15	15	2	228	24	228	0	1	2	0	0	228	0	228	2	228	8	228	7
Province of Saskatchewan	493	41	1	20	62	2	493	63	493	0	5	6	1	0	493	5	493	7	493	39	493	21
Province of Alberta	995	59	12	23	94	1	783	0	783	1	8	14	6	0	783	11	783	24	783	74	783	60
Prairies	1865	110	14	91	215	4	1647	96	1351	1	13	20	7	0	1351	16	1335	37	1351	114	1335	89
British Columbia	1129	193	13	93	299	3	1129	69	355	2	4	8	4	0	355	3	355	2	259	32	259	21
Yukon	18	6	0	0	6	0	18	0	N.A.	N.A.	N.A.	N.A.	N.A.	N.A.	N.A.	N.A.	N.A.	N.A.	N.A.	N.A.	N.A.	N.A.
Northwest Territories	7	1	0	0	1	0	7	0	7	0	0	0	0	0	7	1	7	0	7	2	7	2
Nunavut	4	0	0	0	0	0	4	0	4	0	0	0	0	0	4	0	4	0	4	0	4	1
Territories	29	7	0	0	7	0	29	0	11	0	0	0	0	0	11	1	11	0	11	2	11	3
CANADA	11432	532	99	1675	2306	40	10736	1093	3829	11	33	47	15	0	3795	45	3757	71	2206	185	2755	196

Specimens from Yukon (YT), Northwest Territories (NT) and Nunavut (NU) are sent to reference laboratories in other provinces and reported results reflect specimens identified as originating from YT, NT or NU.

Results from British Columbia comprise of specimens from the following sites: BC Children's and Women's Hospital, Powell River Hospital, St. Paul's Hospital, Vancouver General Hospital, Victoria General Hospital, Interior Health Authority sites and Northern Health Authority sites.

Delays in the reporting of data may cause data to change retrospectively.

Table 2: Respiratory Virus Detections/Isolations for the period August 26, 2018 - January 19, 2019 (Reporting Weeks 201835-201903)

Reporting Laboratory	Flu Tested	A(H1N1)pdm09 Positive	A(H3) Positive	A(UnS) Positive	Total Flu A Positive	Total Flu B Positive	RSV Tested	RSV Positive	PIV Tested	PIV 1 Positive	PIV 2 Positive	PIV 3 Positive	PIV 4 Positive	Other PIV Positive	Adeno Tested	Adeno Positive	hMPV Tested	hMPV Positive	Entero/Rhino Tested	Entero/Rhino Positive	Coron Tested	Coron Positive
Newfoundland	1630	1	0	186	187	1	1630	125	1630	0	14	43	0	0	1630	14	1630	9	1630	213	N.A.	N.A.
Prince Edward Island	427	90	0	0	90	0	425	11	58	0	0	1	3	0	53	5	53	0	53	21	53	0
Nova Scotia	1138	0	0	102	102	2	1144	73	339	0	3	9	1	0	339	0	339	3	339	53	339	3
New Brunswick	5667	93	6	1140	1239	2	5670	265	1506	0	14	6	33	0	1506	95	1506	12	1506	226	1506	15
Atlantic	8862	184	6	1428	1618	5	8869	474	3533	0	31	59	37	0	3528	114	3528	24	3528	513	1898	18
Région Nord-Est	4314	0	0	879	879	3	3206	85	0	0	0	0	0	0	0	0	0	0	N.A.	N.A.	0	0
Québec-Chaudière-Appalaches	6677	0	0	1492	1492	12	6816	658	1533	4	29	9	7	0	1586	62	1298	4	N.A.	N.A.	1155	4
Centre-du-Québec	7744	0	0	1835	1835	77	6323	544	0	0	0	0	0	0	36	0	0	0	N.A.	N.A.	0	0
Montréal-Laval	20607	0	0	2240	2240	29	19941	1687	11963	45	143	41	35	0	11963	356	11714	92	N.A.	N.A.	11663	435
Ouest du Québec	6375	0	0	1308	1308	12	5757	744	0	0	0	0	0	0	0	0	0	0	N.A.	N.A.	0	0
Montérégie	4279	0	0	694	695	7	4266	317	0	0	0	0	0	0	0	0	0	0	N.A.	N.A.	0	0
Province of Québec	49996	0	0	8448	8449	140	46309	4035	13496	49	172	50	42	0	13585	418	13012	96	N.A.	N.A.	12818	439
Ottawa P.H.L.	471	48	12	8	68	0	466	28	302	0	2	3	0	0	302	0	286	1	18	0	0	0
CHEO - Ottawa	3780	0	0	259	259	9	3780	405	489	0	7	4	5	0	489	16	488	6	481	141	482	19
Kingston P.H.L.	479	22	15	1	38	0	479	28	383	0	3	2	0	0	383	0	369	1	52	0	0	0
UHN / Mount Sinai Hospital	5929	3	6	350	359	12	5929	274	310	0	8	0	2	0	0	0	286	2	N.A.	N.A.	N.A.	N.A.
P.H.O.L. - Toronto	7756	543	188	46	777	24	7536	257	6296	12	54	21	0	0	6297	27	6143	31	274	0	0	0
Sick Kids Hospital - Toronto	1348	74	4	27	105	1	1269	165	1269	8	34	18	21	0	1269	44	1269	33	1269	338	1269	83
Sunnybrook & Women's College HSC	1320	58	21	6	85	0	1320	37	1320	4	5	5	1	0	1320	1	1320	17	1320	127	1320	45
Sault Ste. Marie P.H.L.	161	8	1	0	9	0	156	4	150	0	0	0	0	0	150	0	146	2	4	0	0	0
Timmins P.H.L.	178	25	0	0	25	0	153	0	153	0	7	3	0	0	153	0	147	1	12	0	0	0
St. Joseph's - London	1872	3	0	114	117	0	1865	190	766	2	5	6	11	0	766	22	766	25	559	130	455	6
London P.H.L.	2046	173	15	39	227	4	2019	136	1508	2	18	6	0	0	1508	12	1467	9	69	0	0	0
Orillia P.H.L.	507	28	2	4	34	0	507	52	388	0	2	4	0	0	388	1	378	0	14	0	0	0
Thunder Bay P.H.L.	173	18	2	5	25	0	155	2	148	1	1	8	0	0	147	0	141	3	11	0	0	0
Sudbury P.H.L.	392	8	1	0	9	0	383	15	374	1	4	0	0	0	374	2	350	4	36	0	0	0
Hamilton P.H.L.	1934	112	31	25	168	3	1916	77	1561	2	13	12	0	0	1561	8	1532	6	53	0	0	0
Peterborough P.H.L.	638	31	7	9	47	2	637	30	522	2	2	0	0	0	522	0	517	2	7	0	0	0
Province of Ontario	28984	1154	305	893	2352	55	28570	1700	15939	34	165	92	40	0	15629	133	15605	143	4254	739	3583	156
Manitoba	5684	224	4	661	889	4	5587	171	2402	0	10	13	10	0	2402	28	1334	17	2402	314	1368	24
Regina	5836	1349	61	139	1549	1	5836	135	7769	2	54	77	34	0	5836	86	5836	46	5836	1170	5836	46
Saskatoon	3474	0	0	654	654	5	3474	129	3474	1	5	7	8	0	3474	26	3474	15	3474	235	3474	14
Province of Saskatchewan	9310	1349	61	793	2203	6	9310	264	11243	3	59	84	42	0	9310	112	9310	61	9310	1405	9310	60
Province of Alberta	21254	3315	94	1610	5019	34	16978	0	16978	19	154	191	181	0	16978	206	16978	249	16978	2891	16978	493
Prairies	36248	4888	159	3064	8111	44	31875	435	30623	22	223	288	233	0	28690	346	27622	327	28690	4610	27656	577
British Columbia	11379	1851	116	762	2729	14	11379	411	5071	9	45	102	76	0	5071	61	5071	16	3999	1046	3999	86
Yukon	179	27	1	6	34	0	179	2	N.A.	N.A.	N.A.	N.A.	N.A.	N.A.	N.A.	N.A.	N.A.	N.A.	N.A.	N.A.	N.A.	N.A.
Northwest Territories	483	144	2	0	146	0	480	0	480	0	0	16	3	0	480	14	480	2	480	92	480	8
Nunavut	40	9	0	0	9	0	40	0	40	0	0	0	0	0	40	5	39	0	40	11	39	1
Territories	702	180	3	6	189	0	699	2	520	0	0	16	3	0	520	19	519	2	520	103	519	9
CANADA	136171	8257	589	14601	23448	258	127701	7057	69182	114	636	607	431	0	67023	1091	65357	608	40991	7011	50473	1285

Specimens from YT, NT and NU are sent to reference laboratories in other provinces and reported results reflect specimens identified as originating from YT, NT or NU.

Results from British Columbia comprise of specimens from the following sites: BC Children's and Women's Hospital, Powell River Hospital, St. Paul's Hospital, Vancouver General Hospital, Victoria General Hospital, Interior Health Authority sites and Northern Health Authority sites.

Delays in the reporting of data may cause data to change retrospectively.

Due to reporting delays, the sum of weekly report totals do not add up to cumulative totals.

Figure 1: Number positive laboratory tests for other respiratory viruses by report week, Canada, 2018-19

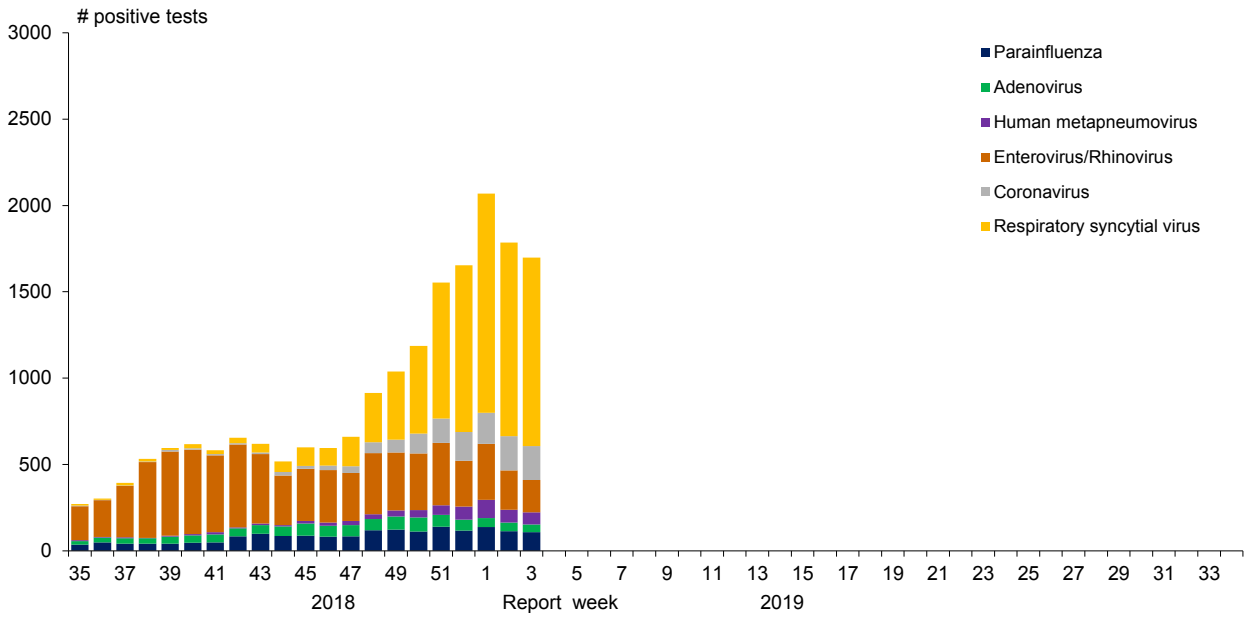


Figure 2: Positive Influenza Tests (%) in Canada by Region by Week of Report

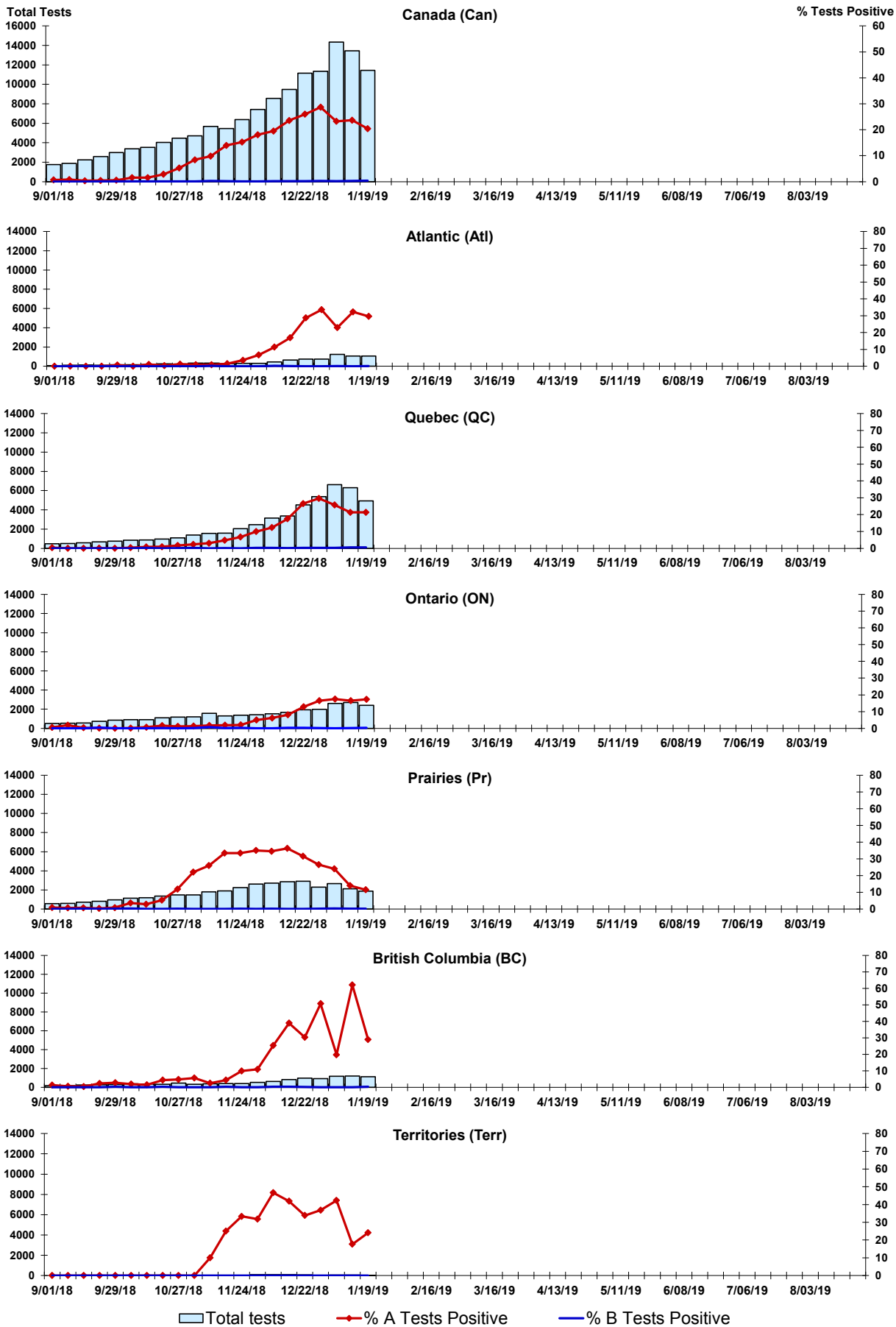


Figure 3: Positive Respiratory syncytial virus (RSV) Tests (%) in Canada by Region by Week of Report

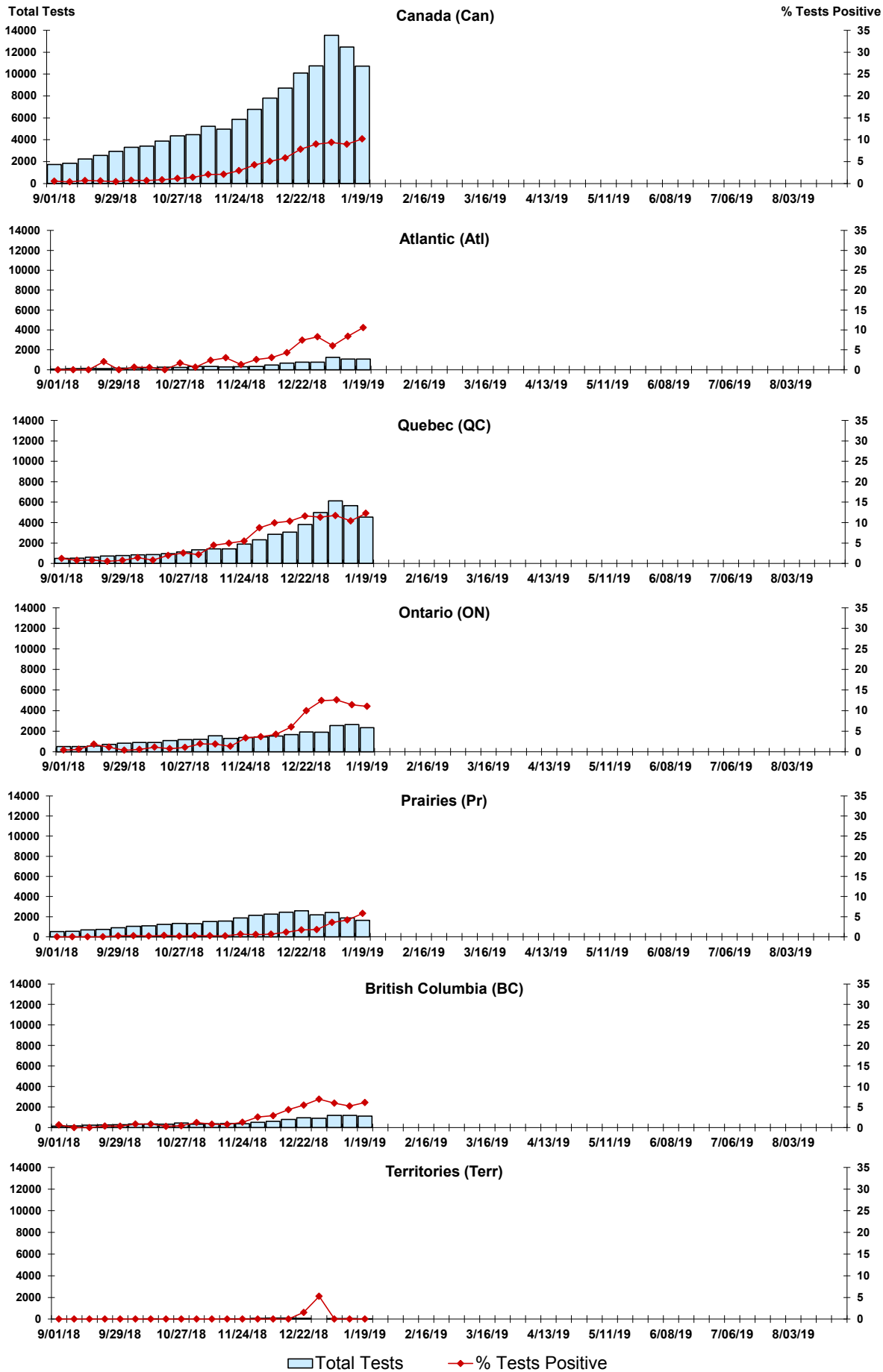


Figure 4: Positive Parainfluenza (PIV) Tests (%) in Canada by Region by Week of Report

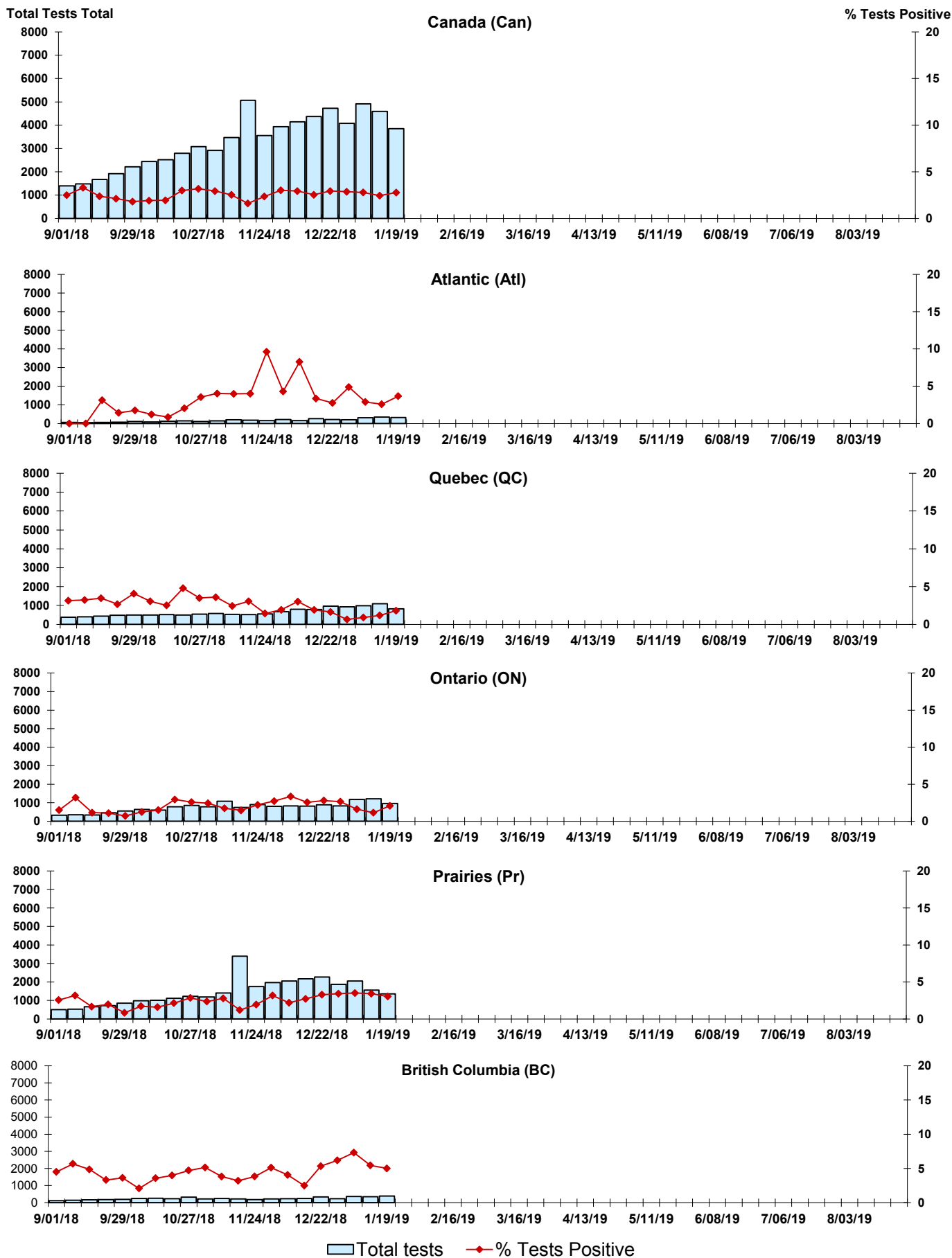


Figure 5: Positive Adenovirus (adeno) Tests (%) in Canada by Region by Week of Report

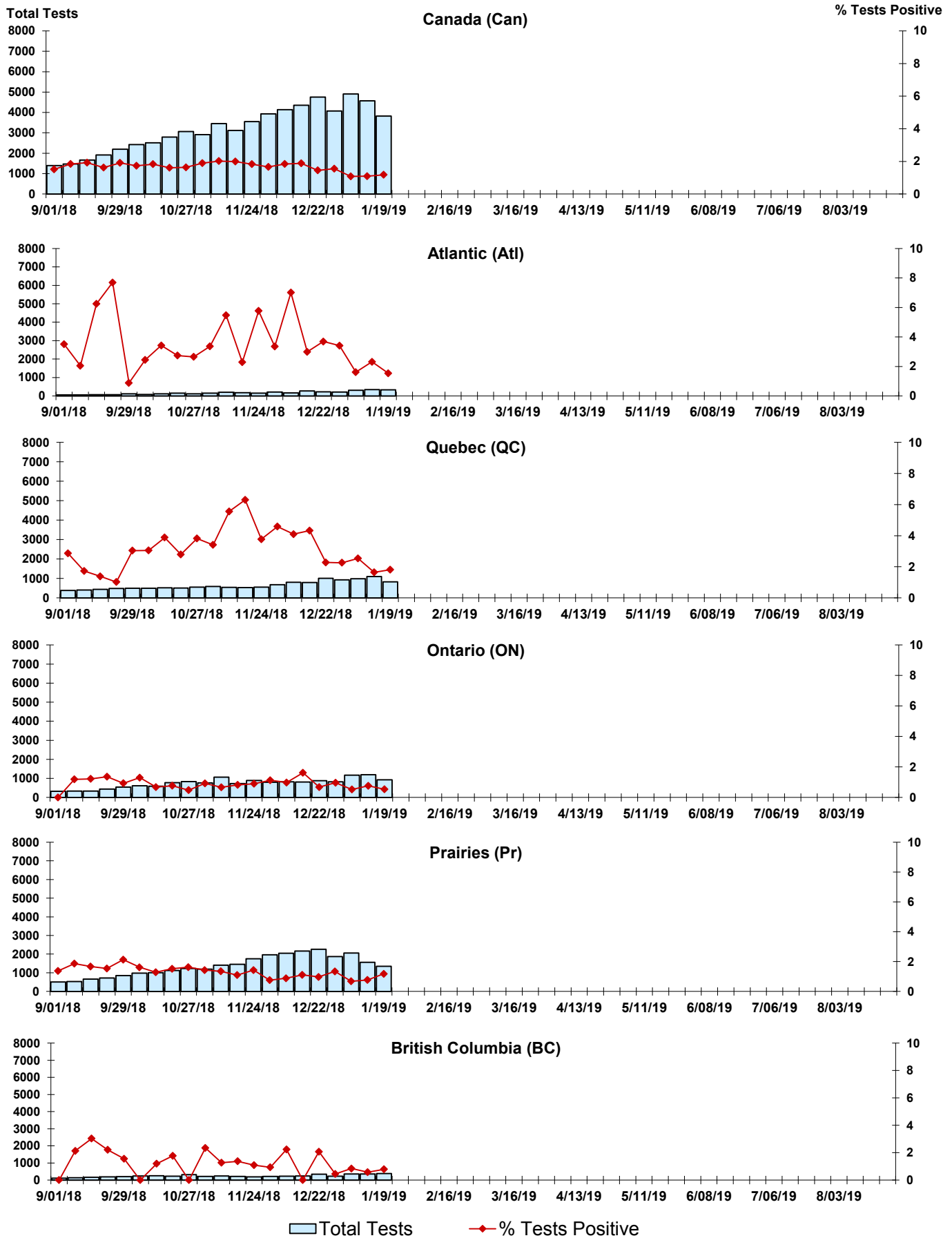
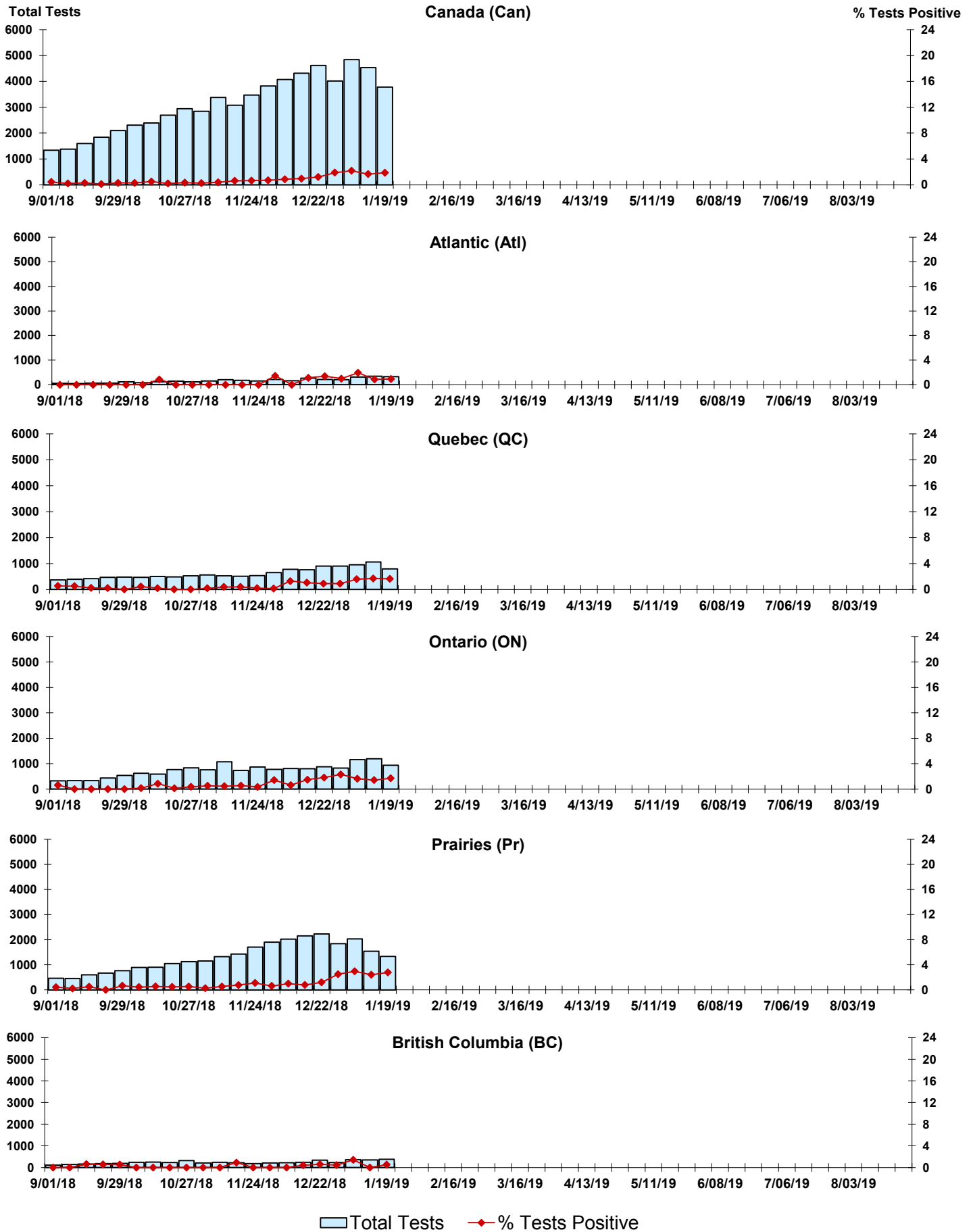


Figure 6: Positive human metapneumovirus (hMPV) Tests (%) in Canada by Region by Week of Report



Legend: Total Tests (light blue bar), % Tests Positive (red line with diamond)

Figure 7: Positive Enterovirus/Rhinovirus (entero/rhino) Tests (%) in Canada by Region by Week of Report

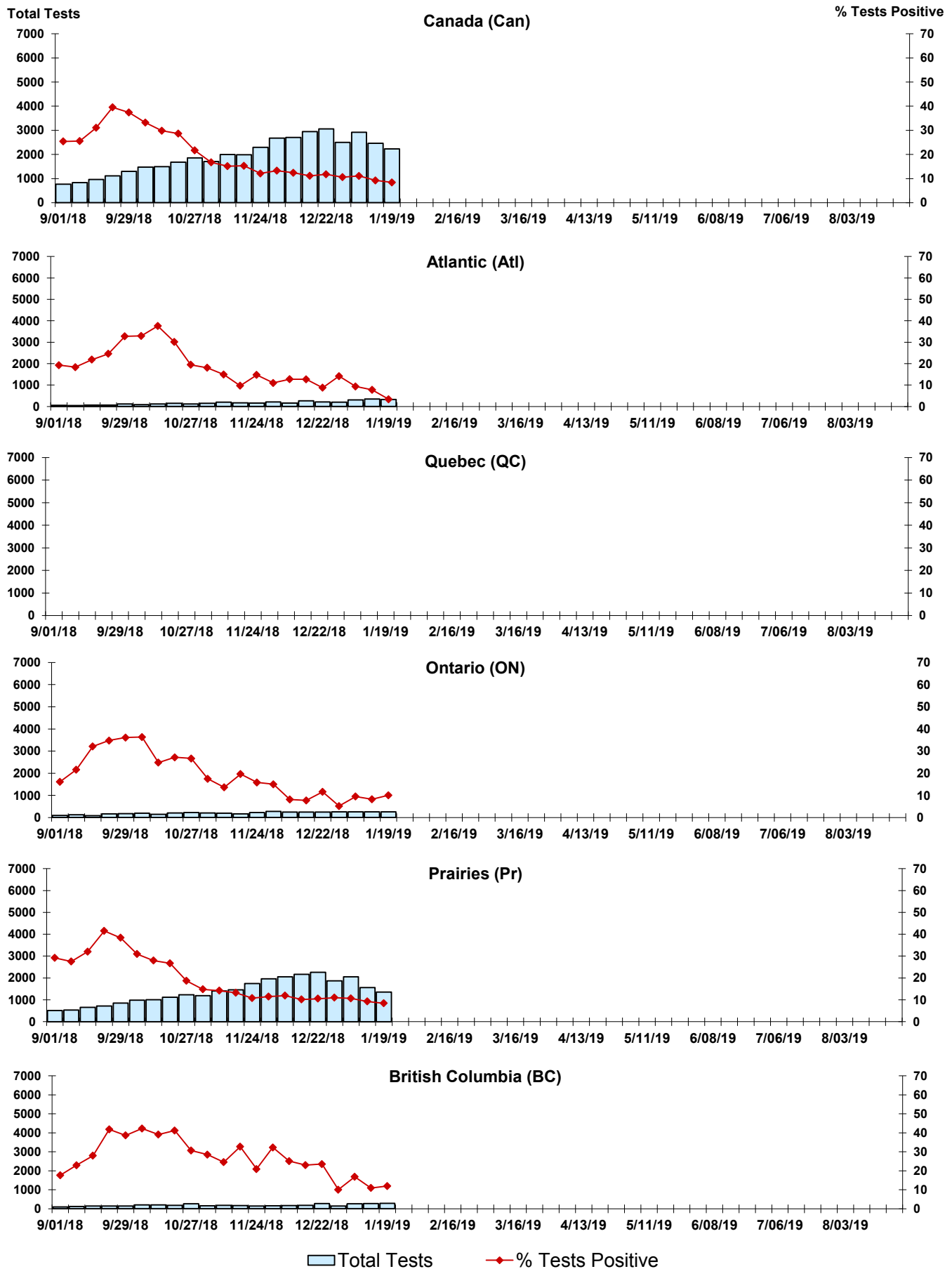
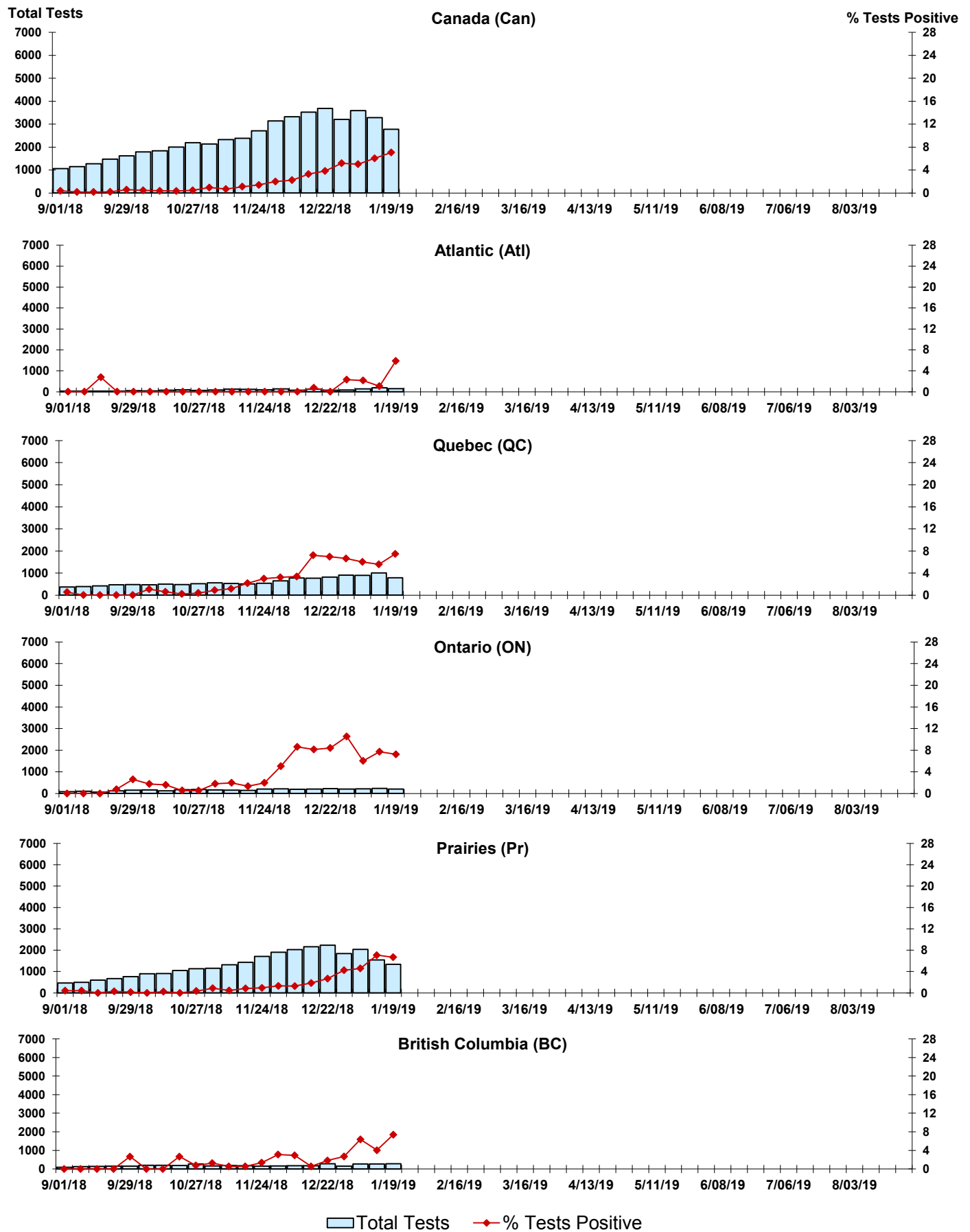


Figure 8: Positive Coronavirus (coron) Tests (%) in Canada by Region by Week of Report



Abbreviations:

A(H1N1)pdm09: Influenza A(H1N1)pdm09

A(H3): Influenza A(H3N2)

A (UnS): Influenza A (Unsubtyped)

Adeno: Adenovirus

CHEO: Children's Hospital of Eastern Ontario

Coron: Coronavirus

Entero: Enterovirus

hMPV: human metapneumovirus

HSC: Health Sciences Centre

N.A.: Not Applicable

P.H.L.: Public Health Laboratory

P.H.O.L.: Public Health Ontario Laboratory

PIV: Parainfluenza

Rhino: Rhinovirus

RSV: Respiratory syncytial virus

UHN: University Health Network

Notes:

Specimens from Yukon (YT), Northwest Territories (NT) and Nunavut (NU) are sent to reference laboratories in other provinces. Results reported for the Territories reflect the number of specimens that are identified as originating from YT, NT or NU.

Delays in the reporting of data may cause data to change retrospectively.

Due to reporting delays, the sum of weekly report totals do not add up to cumulative totals.