

RESPIRATORY VIRUS DETECTION REPORT

March 3 to March 9, 2024
(Surveillance Week 2024-10)



Please note that the Respiratory Virus Detection Surveillance System (RVDSS) is a sentinel laboratory surveillance system that does not capture all respiratory virus testing performed in Canada; differences may exist between the data presented in this report and provincial/territorial epidemiological reports. SARS-CoV-2 laboratory data is included in this report to facilitate the comparison of positivity with other respiratory viruses. Interpretation should be made with caution as testing practices differ among viruses.

For additional SARS-CoV-2 surveillance information, please refer to the [COVID-19 epidemiology update](#).

Overall Summary

In week 10 (week ending March 9, 2024) in Canada, participating RVDSS laboratories reported 1,950 detections of SARS-CoV-2 from 31,189 tests (6.3% positive). Among non-SARS-CoV-2 respiratory viruses, where test volumes are lower (range of 7,588 to 29,235 tests), activity of influenza is highest.

- National SARS-CoV-2 percent positivity has been decreasing since mid-December 2023.
- Influenza A percent positivity has decreased in recent weeks (1,676 detections; 5.7% positive) but remains higher than influenza B which is currently increasing (1,458 detections; 5.0% positive).
- RSV percent positivity is stable (899 detections; 3.6% positive).
- Percent positivity of all other non-SARS-CoV-2 respiratory viruses is within expected levels typical of this time of year.
- 32/35 sentinel laboratories reported surveillance data

Abbreviations

ADV: Adenovirus

Atl: Atlantic Canada

BC: British Columbia

Can: Canada

EORLA: Eastern Ontario Regional Laboratory Association

EV/RV: Enterovirus/Rhinovirus

Flu: Influenza

Flu A(H1N1)pdm09: Influenza A(H1N1)pdm09

Flu A(H3): Influenza A(H3N2)

Flu A (UnS): Influenza A(Unsubtyped)

HCoV: Human coronavirus 229E/OC43/NL63/HKU1

HMPV: Human metapneumovirus

HPIV: Human parainfluenza virus

N.C.: Data not collected

N.R.: Data not reported for current week

ON: Ontario

PR: Prairies

P.H.O.L.: Public Health Ontario Laboratory

QC: Quebec

RSV: Respiratory syncytial virus

RVDSS: Respiratory Virus Detection Surveillance System

SARS-CoV-2: Severe acute respiratory syndrome coronavirus 2

Terr: Territories of Canada

UHN: University Health Network

HSC: Health Sciences Centre

© His Majesty the King in Right of Canada, as represented by the Minister of Health, 2021

ISSN: 2564-2359 | Cat.: HP38-7E-PDF | Pub.: 210284

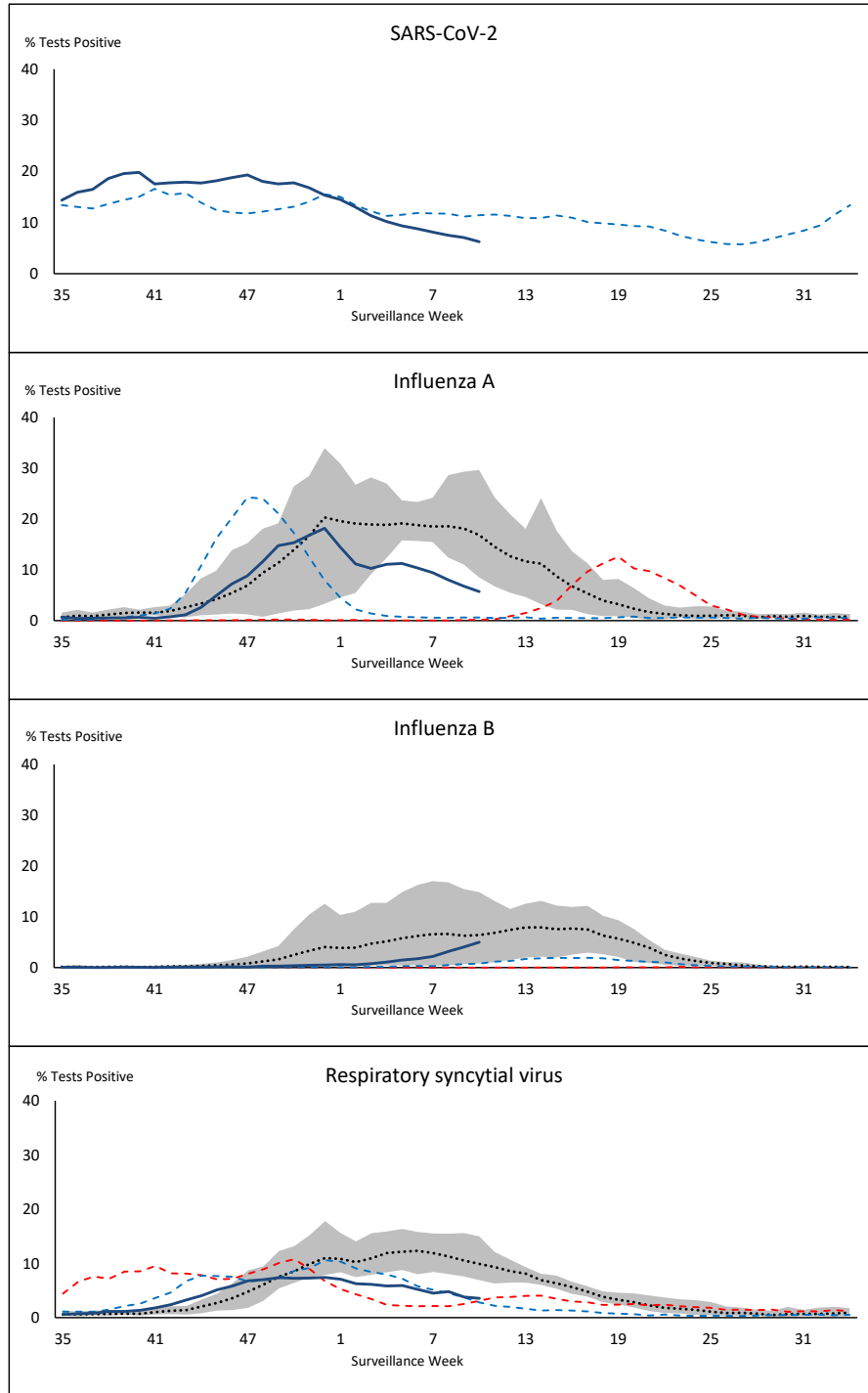


Public Health
Agency of Canada

Agence de la santé
publique du Canada

Canada

Figure 1: Positive severe acute respiratory syndrome coronavirus 2 (SARS-CoV-2), influenza, and respiratory syncytial virus tests (%) reported by participating laboratories in Canada by surveillance week compared to average and range from 2014-2015 to 2019-2020 season



— % Tests Positive, 2023-2024 - - - % Tests Positive, 2022-2023
- - - % Tests Positive, 2021-2022 ⋯ % Tests Positive, six-year average (2014-2015 to 2019-2020)

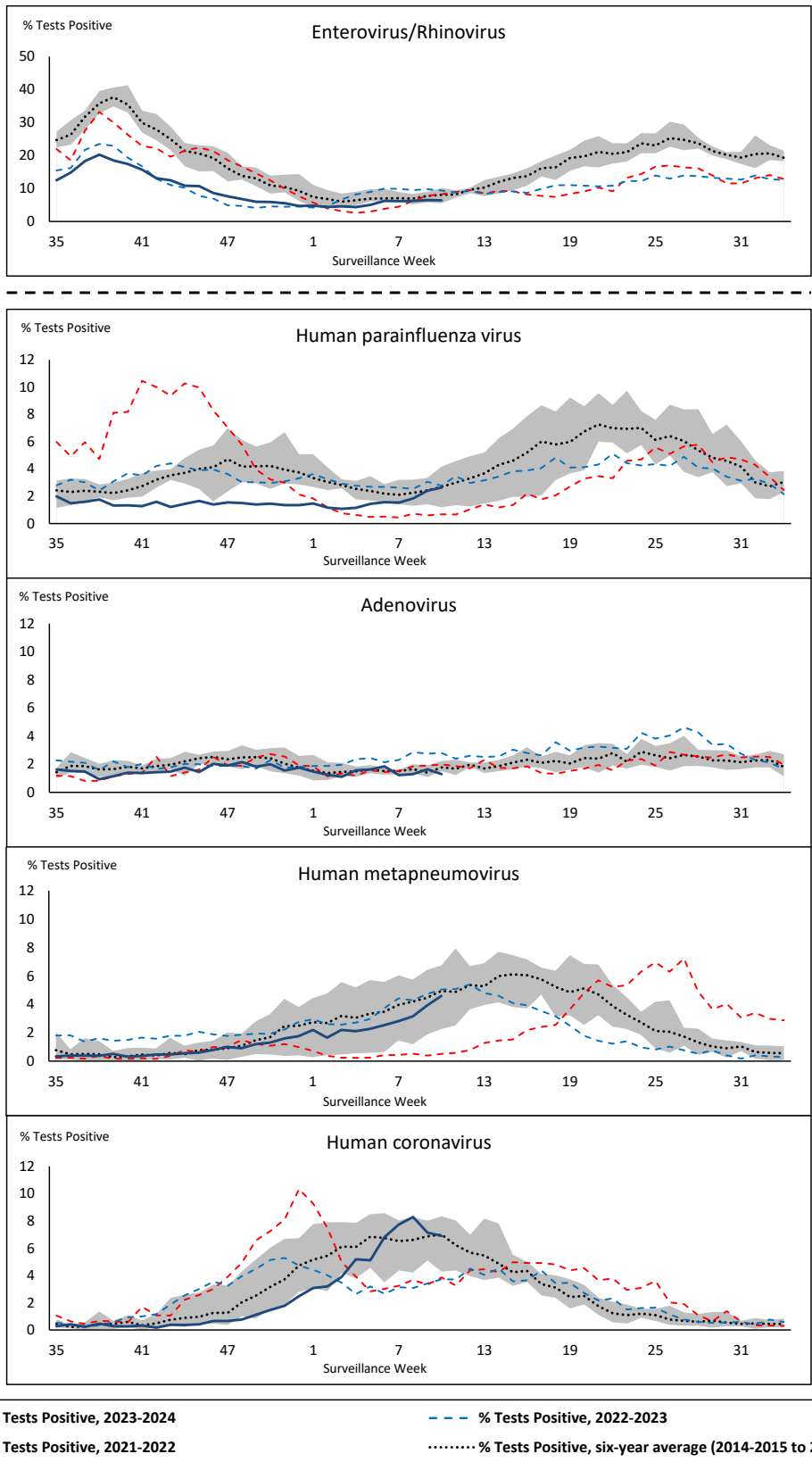
Shaded area represents the maximum and minimum % of respiratory virus tests positive reported by week from seasons 2014-2015 to 2019-2020

Note: Changes to testing practices during the COVID-19 pandemic may cause substantial changes to indicator estimates from previous years. Collection of laboratory testing practice meta-data to understand these changes is ongoing. Interpret trends with caution.

Note: SARS-CoV-2 surveillance was integrated into RVDSS at the beginning of the 2022-2023 season; no prior data is available for historical comparison.

Note: Data from week 11 of the 2019-2020 season onwards are excluded from the historical comparison due to the COVID-19 pandemic.

Figure 2: Positive tests (%) of other respiratory viruses reported by participating laboratories in Canada by surveillance week compared to average and range from 2014-2015 to 2019-2020 season



Shaded area represents the maximum and minimum % of respiratory virus tests positive reported by week from seasons 2014-2015 to 2019-2020

Note: Changes to testing practices during the COVID-19 pandemic may cause substantial changes to indicator estimates from previous years. Collection of laboratory testing practice meta-data to understand these changes is ongoing. Interpret trends with caution.

Note: Data from week 11 of the 2019-2020 season onwards are excluded from the historical comparison due to the COVID-19 pandemic.

Note: % Tests Positive scale changes across the dashed line

Table 1: Respiratory virus detections for the week ending March 9, 2024 (surveillance week 2024-10)

| Reporting Laboratory | SARS-CoV-2 Tested | SARS-CoV-2 Positive | Flu Tested | A(H1)pdm09 Positive | A(H3) Positive | A(UnS) Positive | Total Flu A Positive | Total Flu B Positive | RSV Tested | RSV Positive | HPIV Tested | HPIV 1 Positive | HPIV 2 Positive | HPIV 3 Positive | HPIV 4 Positive | Other HPIV Positive | ADV Tested | ADV Positive | HMPV Tested | HMPV Positive | EV/RV Tested | EV/RV Positive | HCoV Tested | HCoV Positive |
|------------------------------|-------------------|---------------------|--------------|---------------------|----------------|-----------------|----------------------|----------------------|--------------|--------------|-------------|-----------------|-----------------|-----------------|-----------------|---------------------|-------------|--------------|-------------|---------------|--------------|----------------|-------------|---------------|
| Newfoundland | 457 | 29 | 325 | 0 | 0 | 15 | 15 | 9 | 325 | 20 | 325 | 4 | 1 | 0 | 1 | 0 | 325 | 6 | 325 | 12 | 325 | 14 | 325 | 9 |
| Prince Edward Island | 223 | 10 | 198 | 0 | 0 | 15 | 15 | 21 | 198 | 21 | 25 | 0 | 0 | 1 | 0 | 0 | 25 | 1 | 25 | 5 | 25 | 4 | 25 | 1 |
| Nova Scotia | 1167 | 118 | 1057 | 0 | 0 | 122 | 122 | 25 | 932 | 42 | 37 | 0 | 0 | 1 | 0 | 0 | 37 | 0 | 37 | 2 | 37 | 6 | 37 | 1 |
| New Brunswick | 1265 | 74 | 1246 | 20 | 2 | 24 | 46 | 125 | 1245 | 93 | 96 | 0 | 0 | 4 | 1 | 0 | 96 | 2 | 96 | 7 | 96 | 20 | 96 | 13 |
| Atlantic | 3112 | 231 | 2826 | 20 | 2 | 176 | 198 | 180 | 2700 | 176 | 483 | 4 | 1 | 6 | 2 | 0 | 483 | 9 | 483 | 26 | 483 | 44 | 483 | 24 |
| Région Nord-Est | 1447 | 51 | 1600 | 0 | 0 | 95 | 95 | 93 | 756 | 64 | 83 | 0 | 0 | 2 | 0 | 0 | 83 | 2 | 78 | 7 | N.C. | N.C. | 83 | 9 |
| Québec-Chaudière-Appalaches | 1390 | 45 | 1852 | 0 | 0 | 187 | 187 | 223 | 1730 | 79 | 610 | 0 | 0 | 8 | 1 | 0 | 635 | 9 | 610 | 41 | N.C. | N.C. | 447 | 31 |
| Centre-du-Québec | 2067 | 60 | 1957 | 0 | 0 | 215 | 215 | 112 | 850 | 38 | 24 | 0 | 0 | 1 | 0 | 0 | 24 | 1 | 24 | 5 | N.C. | N.C. | 24 | 2 |
| Montréal-Laval | 1988 | 59 | 2974 | 1 | 0 | 255 | 256 | 77 | 1661 | 46 | 923 | 0 | 1 | 15 | 0 | 0 | 923 | 15 | 924 | 37 | N.C. | N.C. | 923 | 59 |
| Ouest du Québec | 1264 | 53 | 805 | 0 | 0 | 71 | 71 | 34 | 796 | 30 | 21 | 0 | 0 | 2 | 0 | 0 | 21 | 2 | 21 | 1 | N.C. | N.C. | 21 | 2 |
| Montérégie | 1245 | 57 | 1576 | 0 | 0 | 123 | 123 | 28 | 1575 | 44 | 9 | 0 | 0 | 0 | 0 | 0 | 9 | 0 | 9 | 0 | N.C. | N.C. | 9 | 0 |
| Province of Québec | 9401 | 325 | 10764 | 1 | 0 | 946 | 947 | 567 | 7368 | 301 | 1670 | 0 | 1 | 28 | 1 | 0 | 1695 | 29 | 1666 | 91 | N.C. | N.C. | 1507 | 103 |
| P.H.O.L. - Ottawa | 203 | 26 | 166 | 3 | 0 | 12 | 15 | 3 | 166 | 1 | 124 | 0 | 0 | 0 | 0 | 5 | 124 | 0 | 124 | 7 | 124 | 10 | 124 | 26 |
| EORLA | 803 | 39 | 496 | 0 | 0 | 37 | 37 | 42 | 496 | 4 | 45 | 0 | 0 | 1 | 0 | 0 | 45 | 0 | 45 | 0 | 45 | 6 | 45 | 4 |
| P.H.O.L. - Kingston | 129 | 6 | 100 | 1 | 0 | 9 | 10 | 1 | 100 | 0 | 67 | 0 | 0 | 0 | 0 | 4 | 67 | 0 | 67 | 0 | 67 | 7 | 67 | 15 |
| UHN / Mount Sinai Hospital | 828 | 28 | 571 | 0 | 0 | 10 | 10 | 4 | 571 | 9 | 77 | 0 | 0 | 3 | 0 | 0 | 77 | 0 | 77 | 1 | 77 | 3 | 77 | 5 |
| P.H.O.L. - Toronto | 538 | 23 | 943 | 11 | 8 | 20 | 38 | 37 | 943 | 11 | 838 | 0 | 0 | 0 | 0 | 41 | 838 | 12 | 838 | 78 | 838 | 46 | 838 | 114 |
| Sick Kids Hospital - Toronto | N.R. | N.R. | N.R. | N.R. | N.R. | N.R. | N.R. | N.R. | N.R. | N.R. | N.R. | N.R. | N.R. | N.R. | N.R. | N.R. | N.R. | N.R. | N.R. | N.R. | N.R. | N.R. | N.R. | N.R. |
| Shared Hospital Laboratory | 1867 | 39 | 1447 | 22 | 5 | 11 | 38 | 49 | 1447 | 7 | 1434 | 0 | 0 | 0 | 0 | 20 | 1434 | 7 | 1443 | 27 | 1443 | 34 | 1443 | 27 |
| P.H.O.L. - Sault Ste. Marie | 5 | 0 | 13 | 1 | 0 | 0 | 1 | 0 | 13 | 0 | 13 | 0 | 0 | 0 | 0 | 1 | 13 | 0 | 13 | 0 | 13 | 0 | 13 | 4 |
| P.H.O.L. - Timmins | 40 | 15 | 52 | 2 | 1 | 1 | 4 | 0 | 52 | 0 | 41 | 0 | 0 | 0 | 0 | 0 | 41 | 0 | 41 | 2 | 41 | 3 | 41 | 3 |
| St. Joseph's - London | N.R. | N.R. | N.R. | N.R. | N.R. | N.R. | N.R. | N.R. | N.R. | N.R. | N.R. | N.R. | N.R. | N.R. | N.R. | N.R. | N.R. | N.R. | N.R. | N.R. | N.R. | N.R. | N.R. | N.R. |
| P.H.O.L. - London | 372 | 35 | 323 | 21 | 11 | 15 | 39 | 24 | 323 | 5 | 271 | 0 | 0 | 0 | 0 | 8 | 271 | 1 | 271 | 12 | 271 | 16 | 271 | 25 |
| P.H.O.L. - Orillia | 13 | 4 | 13 | 0 | 0 | 0 | 0 | 0 | 13 | 0 | 13 | 0 | 0 | 0 | 0 | 2 | 13 | 0 | 13 | 0 | 13 | 0 | 13 | 1 |
| P.H.O.L. - Thunder Bay | 30 | 7 | 21 | 0 | 0 | 0 | 0 | 0 | 21 | 1 | 11 | 0 | 0 | 0 | 0 | 0 | 11 | 0 | 11 | 1 | 11 | 1 | 11 | 1 |
| P.H.O.L. - Sudbury | 25 | 0 | 31 | 4 | 0 | 0 | 4 | 0 | 31 | 1 | 30 | 0 | 0 | 0 | 0 | 3 | 30 | 0 | 30 | 0 | 30 | 0 | 30 | 11 |
| P.H.O.L. - Hamilton | 97 | 17 | 92 | 2 | 0 | 4 | 6 | 3 | 92 | 0 | 72 | 0 | 0 | 0 | 0 | 1 | 72 | 2 | 72 | 6 | 72 | 10 | 72 | 10 |
| P.H.O.L. - Peterborough | 50 | 0 | 60 | 2 | 0 | 2 | 4 | 2 | 60 | 1 | 42 | 0 | 0 | 0 | 0 | 4 | 42 | 0 | 42 | 2 | 42 | 6 | 42 | 7 |
| St. Joseph's - Hamilton | 1725 | 53 | 1649 | 0 | 0 | 96 | 96 | 66 | 1649 | 12 | 1649 | 0 | 0 | 31 | 0 | 0 | 1649 | 11 | 1649 | 74 | 1649 | 78 | 0 | 0 |
| Sault Area Hospital | 179 | 17 | 106 | 5 | 1 | 0 | 6 | 2 | 106 | 2 | 87 | 1 | 0 | 2 | 0 | 0 | 87 | 0 | 87 | 3 | 87 | 3 | 87 | 9 |
| Province of Ontario | 6904 | 309 | 6083 | 74 | 26 | 217 | 308 | 233 | 6083 | 54 | 4814 | 1 | 0 | 37 | 0 | 89 | 4814 | 33 | 4823 | 213 | 4823 | 223 | 3174 | 262 |
| Manitoba | 1461 | 182 | 1050 | 0 | 0 | 13 | 13 | 31 | 1050 | 41 | 94 | 0 | 0 | 4 | 0 | 0 | 94 | 8 | 114 | 7 | 94 | 13 | 114 | 11 |
| Saskatchewan | 1609 | 109 | 1171 | 0 | 0 | 7 | 7 | 126 | 998 | 53 | 383 | 3 | 0 | 6 | 0 | 0 | 383 | 7 | 383 | 21 | 383 | 26 | 383 | 21 |
| Alberta | 4737 | 316 | 4215 | 44 | 11 | 1 | 63 | 245 | 3990 | 127 | 1022 | 3 | 2 | 34 | 0 | 0 | 1022 | 12 | 967 | 0 | 1015 | 74 | 1022 | 47 |
| Prairies | 7807 | 607 | 6436 | 44 | 11 | 21 | 83 | 402 | 6038 | 221 | 1499 | 6 | 2 | 44 | 0 | 0 | 1499 | 27 | 1464 | 28 | 1492 | 113 | 1519 | 79 |
| British Columbia | 3861 | 472 | 3035 | 25 | 25 | 3 | 136 | 63 | 2918 | 125 | 951 | 0 | 1 | 24 | 2 | 0 | 951 | 22 | 951 | 75 | 905 | 116 | 905 | 55 |
| Yukon | 38 | 3 | 25 | 1 | 2 | 0 | 4 | 0 | 24 | 1 | N.C. | N.C. | N.C. | N.C. | N.C. | N.C. | N.C. | N.C. | N.C. | N.C. | N.C. | N.C. | N.C. | N.C. |
| Northwest Territories | 66 | 3 | 66 | 0 | 0 | 0 | 0 | 13 | 66 | 21 | N.C. | N.C. | N.C. | N.C. | N.C. | N.C. | 66 | 4 | 66 | 1 | 66 | 3 | N.C. | N.C. |
| Nunavut | N.R. | N.R. | N.R. | N.R. | N.R. | N.R. | N.R. | N.R. | N.R. | N.C. | N.C. | N.C. | N.C. | N.C. | N.C. | N.C. | N.C. | N.C. | N.C. | N.C. | N.C. | N.C. | N.C. | N.C. |
| Territories | 104 | 6 | 91 | 1 | 2 | 0 | 4 | 13 | 90 | 22 | N.C. | N.C. | N.C. | N.C. | N.C. | N.C. | 66 | 4 | 66 | 1 | 66 | 3 | N.C. | N.C. |
| CANADA | 31189 | 1950 | 29235 | 165 | 66 | 1363 | 1676 | 1458 | 25197 | 899 | 9417 | 11 | 5 | 139 | 5 | 89 | 9508 | 124 | 9453 | 434 | 7769 | 499 | 7588 | 523 |

The data in the RVDSS report represent surveillance data available at the time of writing. Data missing from the current week are denoted by N.R. Data not collected by reporting lab denoted by N.C.

Some specimens from Yukon (YT) are sent to reference laboratories in British Columbia and reported results reflect specimens identified as originating from YT.

Results from British Columbia comprise of specimens from the following sites: Children's and Women's Hospital Laboratory, Fraser Health Medical Microbiology Laboratory, Island Health, Providence Health Care, Vancouver Coastal Health sites, Victoria General Hospital, BCCDC Public Health Laboratory, Interior Health Authority sites and Northern Health Authority sites.

Due to different testing protocols of laboratories across Canada, influenza A subtype detection counts may not be included in total influenza A detection counts. Total influenza A and B positive counts are used to calculate percentage of tests positive.

Delays in the reporting of data may cause data to change retrospectively.

Table 2: Cumulative respiratory virus detections from August 27, 2023 to March 9, 2024 (surveillance weeks 2023-35 to 2024-10)

| Reporting Laboratory | SARS-CoV-2 Tested | SARS-CoV-2 Positive | Flu Tested | A(H1)pdm09 Positive | A(H3) Positive | A(UnS) Positive | Total Flu A Positive | Total Flu B Positive | RSV Tested | RSV Positive | HPIV Tested | HPIV 1 Positive | HPIV 2 Positive | HPIV 3 Positive | HPIV 4 Positive | Other HPIV Positive | ADV Tested | ADV Positive | HMPV Tested | HMPV Positive | EV/RV Tested | EV/RV Positive | HCoV Tested | HCoV Positive |
|------------------------------|-------------------|---------------------|---------------|---------------------|----------------|-----------------|----------------------|----------------------|---------------|--------------|---------------|-----------------|-----------------|-----------------|-----------------|---------------------|---------------|--------------|---------------|---------------|---------------|----------------|---------------|---------------|
| Newfoundland | 17607 | 2671 | 12790 | 0 | 0 | 1280 | 1280 | 61 | 12790 | 821 | 12790 | 15 | 58 | 23 | 100 | 0 | 12790 | 221 | 12790 | 200 | 12790 | 1054 | 12790 | 286 |
| Prince Edward Island | 6417 | 707 | 3899 | 0 | 0 | 526 | 526 | 63 | 3899 | 330 | 441 | 3 | 0 | 1 | 8 | 0 | 440 | 25 | 430 | 11 | 440 | 116 | 424 | 18 |
| Nova Scotia | 40694 | 8022 | 27231 | 0 | 0 | 2304 | 2304 | 239 | 22391 | 1337 | 968 | 15 | 2 | 3 | 10 | 0 | 968 | 39 | 961 | 5 | 968 | 212 | 967 | 9 |
| New Brunswick | 30770 | 3705 | 28352 | 863 | 24 | 1822 | 2709 | 384 | 27947 | 1694 | 2481 | 7 | 4 | 5 | 27 | 0 | 2481 | 95 | 2481 | 47 | 2481 | 489 | 2481 | 102 |
| Atlantic | 95488 | 15105 | 72272 | 863 | 24 | 5932 | 6819 | 747 | 67027 | 4182 | 16680 | 40 | 64 | 32 | 145 | 0 | 16679 | 380 | 16662 | 263 | 16679 | 1871 | 16662 | 415 |
| Région Nord-Est | 48576 | 6924 | 43325 | 5 | 0 | 4597 | 4602 | 328 | 16921 | 1272 | 2144 | 14 | 12 | 12 | 16 | 0 | 2144 | 92 | 2096 | 73 | N.C. | N.C. | 2144 | 66 |
| Québec-Chaudière-Appalaches | 57604 | 9212 | 37075 | 0 | 0 | 5296 | 5296 | 698 | 35663 | 2456 | 14262 | 21 | 9 | 19 | 13 | 0 | 14673 | 465 | 14262 | 373 | N.C. | N.C. | 11835 | 361 |
| Centre-du-Québec | 70973 | 12246 | 32663 | 0 | 0 | 4156 | 4156 | 393 | 19926 | 1503 | 1058 | 15 | 8 | 15 | 7 | 0 | 1058 | 54 | 1058 | 42 | N.C. | N.C. | 1087 | 39 |
| Montréal-Laval | 85751 | 13711 | 67948 | 5 | 2 | 6207 | 6214 | 248 | 44497 | 2702 | 23514 | 94 | 39 | 154 | 24 | 0 | 23514 | 462 | 23578 | 468 | N.C. | N.C. | 23514 | 766 |
| Ouest du Québec | 47300 | 9936 | 19599 | 4 | 0 | 1921 | 1925 | 157 | 19407 | 1049 | 547 | 11 | 3 | 10 | 7 | 0 | 547 | 41 | 547 | 13 | N.C. | N.C. | 547 | 24 |
| Montérégie | 45391 | 7897 | 35687 | 0 | 0 | 3004 | 3004 | 147 | 34622 | 1661 | 188 | 1 | 0 | 0 | 1 | 0 | 188 | 6 | 188 | 3 | N.C. | N.C. | 188 | 3 |
| Province of Québec | 355595 | 59926 | 236297 | 14 | 2 | 25181 | 25197 | 1971 | 171036 | 10643 | 41713 | 156 | 71 | 210 | 68 | 0 | 42124 | 1120 | 41729 | 972 | N.C. | N.C. | 39315 | 1259 |
| P.H.O.L. - Ottawa | 9824 | 3558 | 6609 | 272 | 53 | 155 | 357 | 18 | 6603 | 128 | 3963 | 0 | 0 | 0 | 0 | 70 | 3963 | 12 | 3961 | 57 | 3963 | 403 | 3961 | 171 |
| EORLA | 36705 | 4380 | 16798 | 0 | 0 | 1502 | 1502 | 197 | 16798 | 1100 | 1094 | 2 | 5 | 16 | 4 | 0 | 1069 | 11 | 1094 | 18 | 1094 | 201 | 1094 | 29 |
| P.H.O.L. - Kingston | 6850 | 2020 | 3775 | 126 | 17 | 93 | 210 | 4 | 3775 | 167 | 2655 | 0 | 0 | 0 | 0 | 45 | 2655 | 11 | 2655 | 10 | 2655 | 323 | 2655 | 67 |
| UHN / Mount Sinai Hospital | 31013 | 2955 | 19296 | 40 | 10 | 520 | 570 | 57 | 19296 | 208 | 1074 | 0 | 0 | 11 | 2 | 0 | 1074 | 1 | 1074 | 3 | 1074 | 47 | 1074 | 37 |
| P.H.O.L. - Toronto | 17583 | 5364 | 31099 | 1109 | 898 | 299 | 1662 | 180 | 31090 | 1035 | 28387 | 0 | 0 | 0 | 0 | 837 | 28394 | 323 | 28372 | 453 | 28387 | 2715 | 28372 | 1242 |
| Sick Kids Hospital - Toronto | 3527 | 292 | 3139 | 100 | 95 | 20 | 215 | 26 | 3139 | 305 | 3139 | 14 | 12 | 55 | 19 | 0 | 3139 | 77 | 3139 | 65 | 3139 | 550 | 3139 | 88 |
| Shared Hospital Laboratory | 48881 | 4441 | 41411 | 795 | 510 | 275 | 1580 | 238 | 41417 | 1325 | 41222 | 0 | 0 | 0 | 0 | 259 | 35568 | 300 | 41266 | 181 | 41311 | 1366 | 41288 | 447 |
| P.H.O.L. - Sault Ste. Marie | 419 | 186 | 503 | 49 | 3 | 16 | 62 | 0 | 503 | 44 | 349 | 0 | 0 | 0 | 0 | 5 | 349 | 1 | 349 | 0 | 349 | 21 | 349 | 33 |
| P.H.O.L. - Timmins | 1010 | 293 | 987 | 58 | 10 | 27 | 84 | 0 | 987 | 60 | 792 | 0 | 0 | 0 | 0 | 22 | 792 | 4 | 792 | 6 | 792 | 50 | 792 | 23 |
| St. Joseph's - London | 23380 | 3287 | 11728 | 0 | 0 | 873 | 873 | 89 | 11728 | 693 | 1722 | 0 | 0 | 0 | 0 | 19 | 1741 | 26 | 1741 | 11 | 1743 | 208 | 1741 | 42 |
| P.H.O.L. - London | 13436 | 4011 | 9838 | 456 | 140 | 155 | 566 | 64 | 9835 | 466 | 7833 | 0 | 0 | 0 | 0 | 203 | 7833 | 35 | 7831 | 69 | 7833 | 685 | 7831 | 261 |
| P.H.O.L. - Orillia | 537 | 142 | 1221 | 71 | 17 | 11 | 99 | 0 | 1218 | 74 | 1157 | 0 | 0 | 0 | 0 | 29 | 1157 | 15 | 1157 | 18 | 1157 | 144 | 1157 | 17 |
| P.H.O.L. - Thunder Bay | 1701 | 487 | 1033 | 57 | 0 | 8 | 37 | 4 | 1030 | 28 | 859 | 0 | 0 | 0 | 0 | 26 | 859 | 5 | 859 | 24 | 859 | 54 | 859 | 11 |
| P.H.O.L. - Sudbury | 654 | 238 | 771 | 36 | 1 | 20 | 57 | 1 | 769 | 22 | 529 | 0 | 0 | 0 | 0 | 14 | 530 | 1 | 529 | 1 | 529 | 43 | 529 | 22 |
| P.H.O.L. - Hamilton | 6660 | 2037 | 5372 | 136 | 65 | 87 | 234 | 27 | 5371 | 170 | 3997 | 0 | 0 | 0 | 0 | 121 | 3997 | 75 | 3996 | 68 | 3997 | 521 | 3996 | 170 |
| P.H.O.L. - Peterborough | 2111 | 665 | 2106 | 204 | 204 | 67 | 145 | 12 | 2096 | 221 | 1668 | 0 | 0 | 0 | 0 | 52 | 1668 | 35 | 1668 | 26 | 1668 | 277 | 1668 | 40 |
| St. Joseph's - Hamilton | 54041 | 5634 | 47744 | 0 | 0 | 2983 | 2983 | 426 | 47744 | 1729 | 47744 | 0 | 0 | 330 | 0 | 0 | 47744 | 300 | 47744 | 418 | 47744 | 2753 | 0 | 0 |
| Sault Area Hospital | 5326 | 745 | 3566 | 172 | 11 | 49 | 232 | 9 | 3559 | 191 | 2801 | 25 | 0 | 13 | 17 | 0 | 2752 | 33 | 2752 | 10 | 2752 | 242 | 2762 | 53 |
| Province of Ontario | 263658 | 40735 | 206996 | 3681 | 2034 | 7160 | 11468 | 1352 | 206958 | 7966 | 150985 | 41 | 17 | 425 | 42 | 1702 | 145284 | 1265 | 150979 | 1438 | 151046 | 10603 | 103267 | 2753 |
| Manitoba | 45925 | 6833 | 34609 | 140 | 11 | 1810 | 1961 | 184 | 34609 | 1281 | 2610 | 0 | 10 | 17 | 41 | 0 | 2610 | 115 | 3355 | 122 | 2610 | 503 | 3355 | 97 |
| Saskatchewan | 59326 | 7033 | 39927 | 102 | 8 | 5315 | 5425 | 942 | 36010 | 1395 | 12871 | 29 | 9 | 44 | 20 | 0 | 12871 | 256 | 12871 | 699 | 12871 | 1263 | 12871 | 282 |
| Alberta | 154231 | 18948 | 133153 | 11679 | 711 | 579 | 13041 | 1945 | 124117 | 5784 | 36649 | 126 | 89 | 316 | 3 | 0 | 36641 | 438 | 35631 | 26 | 36084 | 3334 | 36648 | 787 |
| Prairies | 259482 | 32814 | 207689 | 11921 | 730 | 7704 | 20427 | 3071 | 194736 | 8460 | 52130 | 155 | 108 | 377 | 64 | 0 | 52122 | 809 | 51857 | 847 | 51565 | 5100 | 52874 | 1166 |
| British Columbia | 107837 | 14770 | 107624 | 3951 | 716 | 242 | 8122 | 559 | 105120 | 5477 | 25254 | 111 | 165 | 195 | 164 | 0 | 25256 | 776 | 25141 | 902 | 24216 | 3756 | 24193 | 662 |
| Yukon | 1549 | 174 | 1000 | 32 | 15 | 0 | 58 | 3 | 991 | 45 | N.C. | N.C. | N.C. | N.C. | N.C. | N.C. | N.C. | N.C. | N.C. | N.C. | N.C. | N.C. | N.C. | N.C. |
| Northwest Territories | 1074 | 69 | 1013 | 166 | 6 | 1 | 173 | 42 | 1013 | 158 | N.C. | N.C. | N.C. | N.C. | N.C. | N.C. | 814 | 42 | 814 | 8 | 1013 | 122 | N.C. | N.C. |
| Nunavut | 3360 | 297 | 2331 | 426 | 30 | 51 | 507 | 33 | 2331 | 303 | N.C. | N.C. | N.C. | N.C. | N.C. | N.C. | N.C. | N.C. | N.C. | N.C. | N.C. | N.C. | N.C. | N.C. |
| Territories | 5983 | 540 | 4344 | 624 | 51 | 52 | 738 | 78 | 4335 | 506 | N.C. | N.C. | N.C. | N.C. | N.C. | N.C. | 814 | 42 | 814 | 8 | 1013 | 122 | N.C. | N.C. |
| CANADA | 1088043 | 163890 | 835222 | 21054 | 3557 | 46271 | 72771 | 7778 | 749212 | 37234 | 286762 | 503 | 425 | 1239 | 483 | 1702 | 282279 | 4392 | 287182 | 4430 | 244519 | 21452 | 236311 | 6255 |

The data in the RVDSS report represent surveillance data available at the time of writing. Data not collected by reporting lab denoted by N.C.

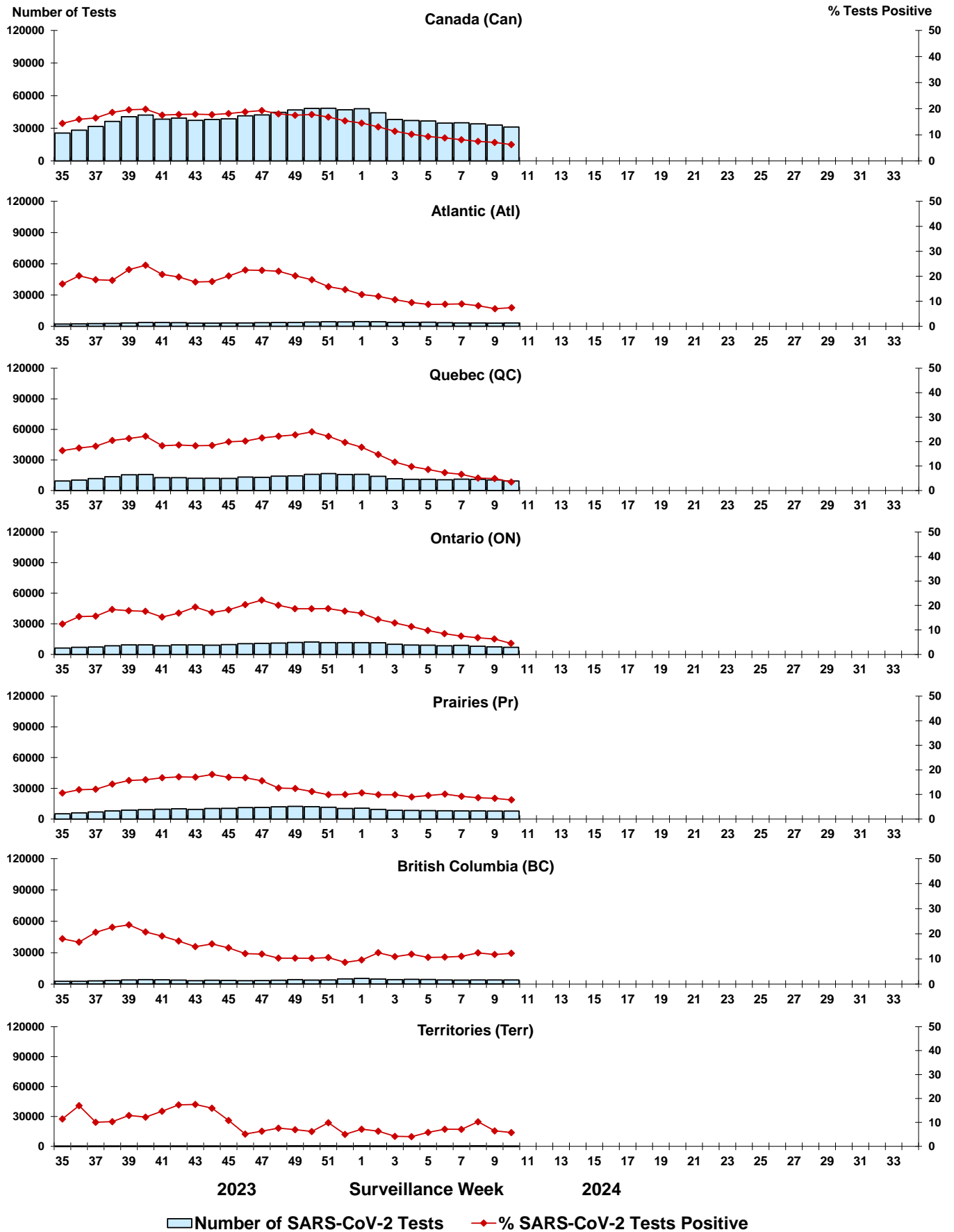
Some specimens from Yukon (YT) are sent to reference laboratories in British Columbia and reported results reflect specimens identified as originating from YT.

Results from British Columbia comprise of specimens from the following sites: Children's and Women's Hospital Laboratory, Fraser Health Medical Microbiology Laboratory, Island Health, Providence Health Care, Vancouver Coastal Health sites, Victoria General Hospital, BCCDC Public Health Laboratory, Interior Health Authority sites and Northern Health Authority sites.

Due to different testing protocols of laboratories across Canada, influenza A subtype detection counts may not be included in total influenza A detection counts. Total influenza A and B positive counts are used to calculate percentage of tests positive.

Delays in the reporting of data may cause data to change retrospectively. Due to these delays, the sum of weekly report totals do not add up to cumulative totals.

Figure 3: Positive severe acute respiratory syndrome coronavirus 2 (SARS-CoV-2) tests (%) in Canada by region by surveillance week



Note: Differences in positivity between jurisdictions can reflect differences in testing practices. Please interpret with caution.

Figure 4: Positive Influenza (Flu) tests (%) in Canada by region by surveillance week

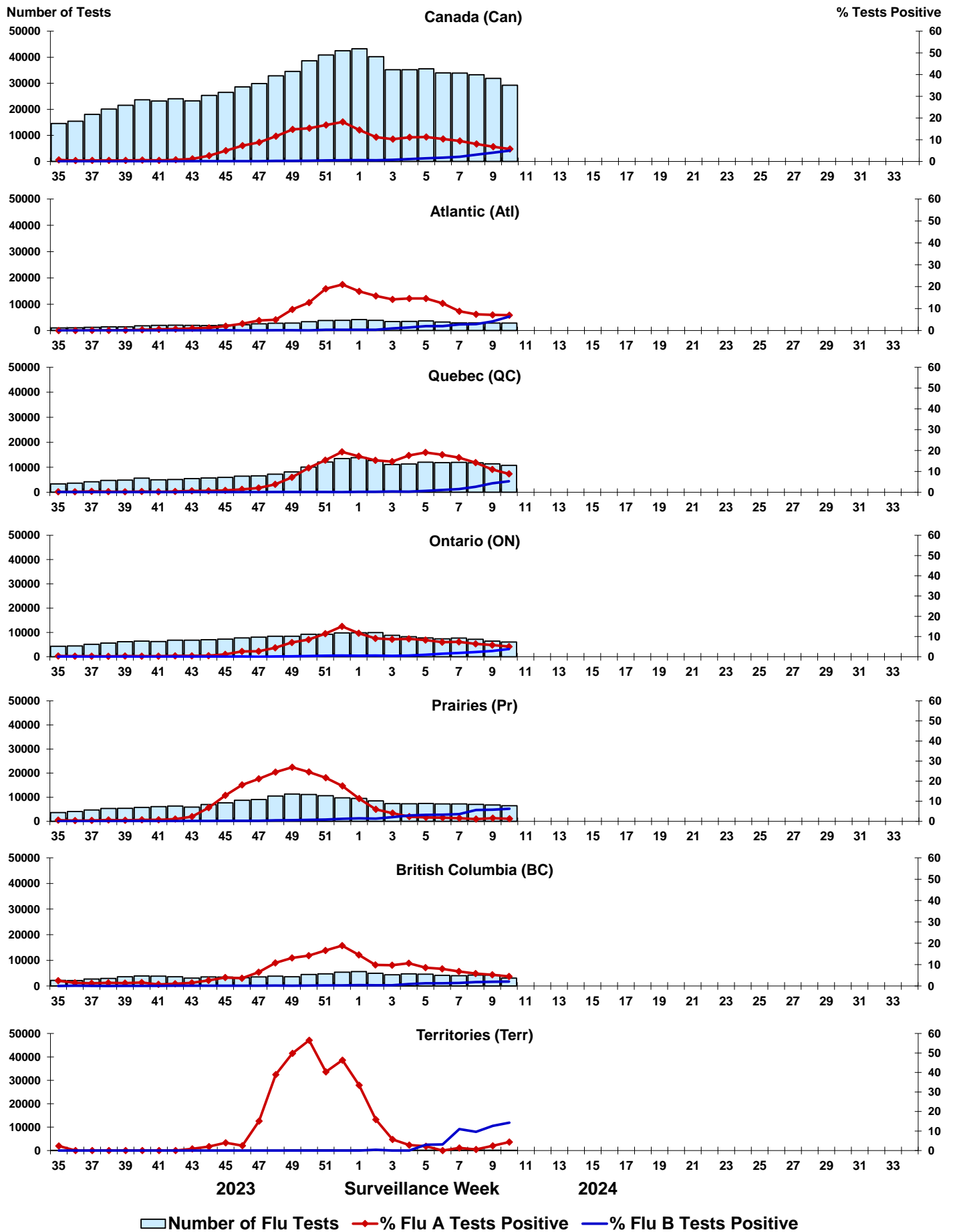


Figure 5: Positive Respiratory syncytial virus (RSV) tests (%) in Canada by region by surveillance week

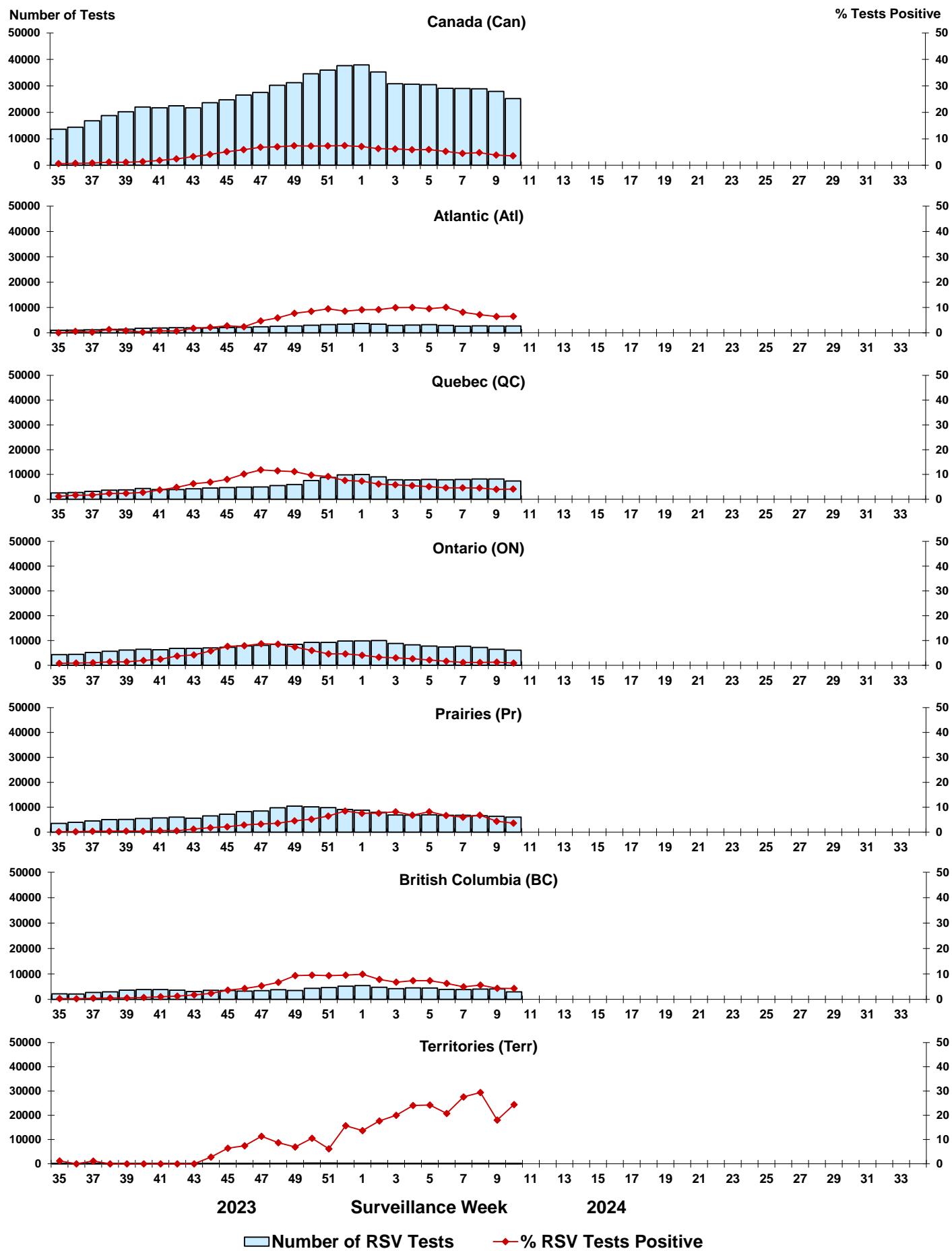


Figure 6: Positive Human parainfluenza virus (HPIV) tests (%) in Canada by region by surveillance week

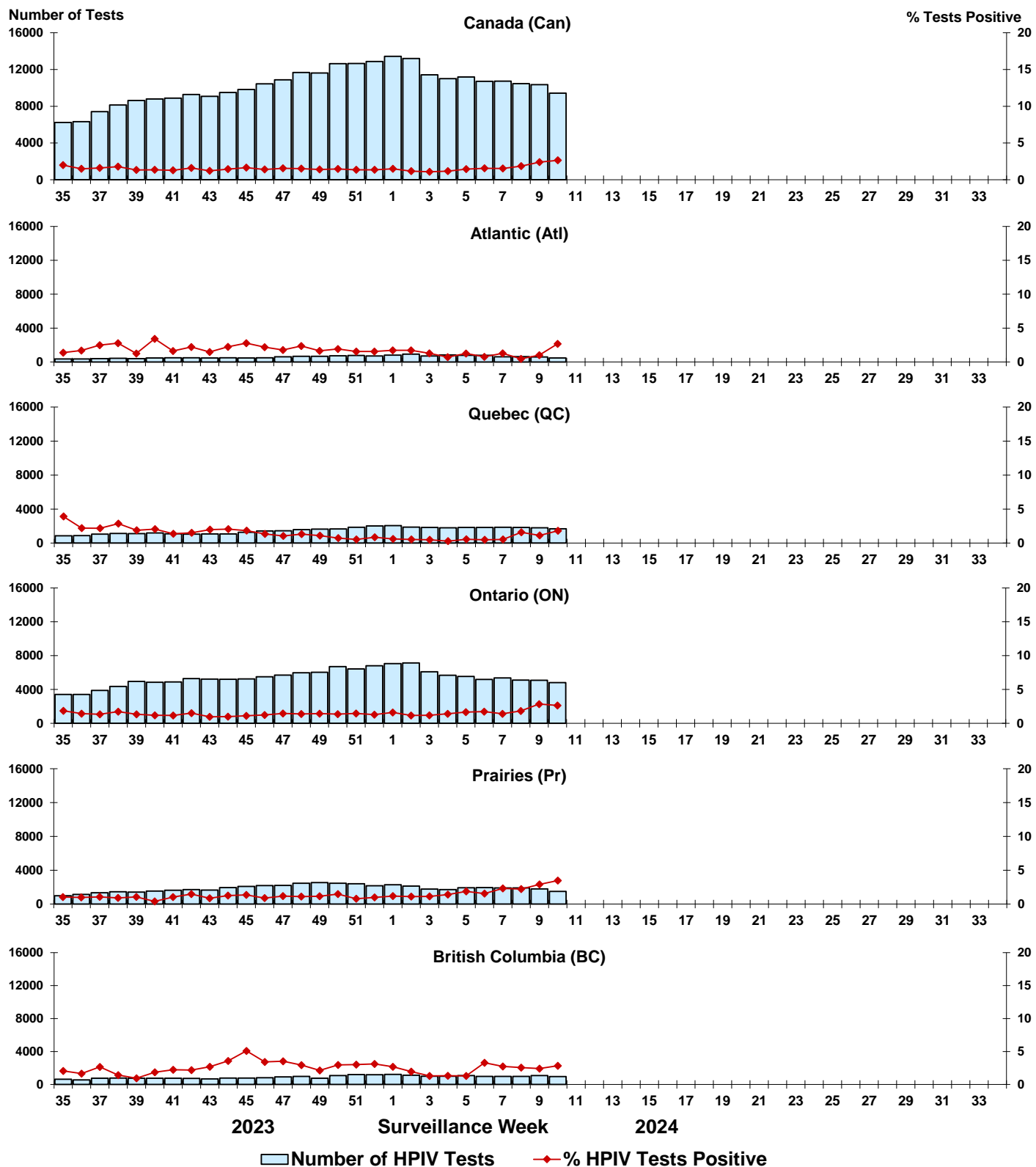


Figure 7: Positive Adenovirus (ADV) tests (%) in Canada by region by surveillance week

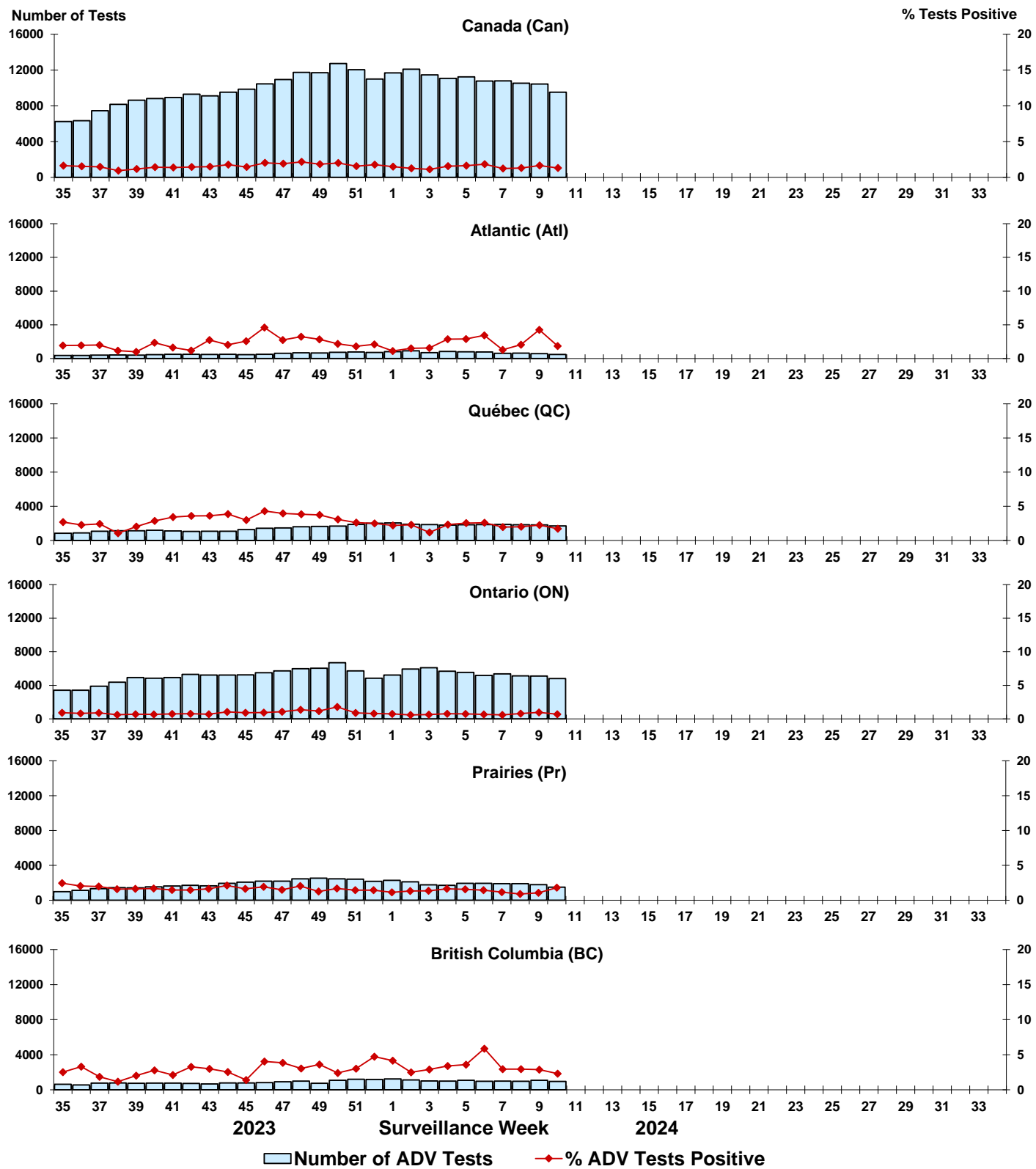


Figure 8: Positive Human metapneumovirus (HMPV) tests (%) in Canada by region by surveillance week

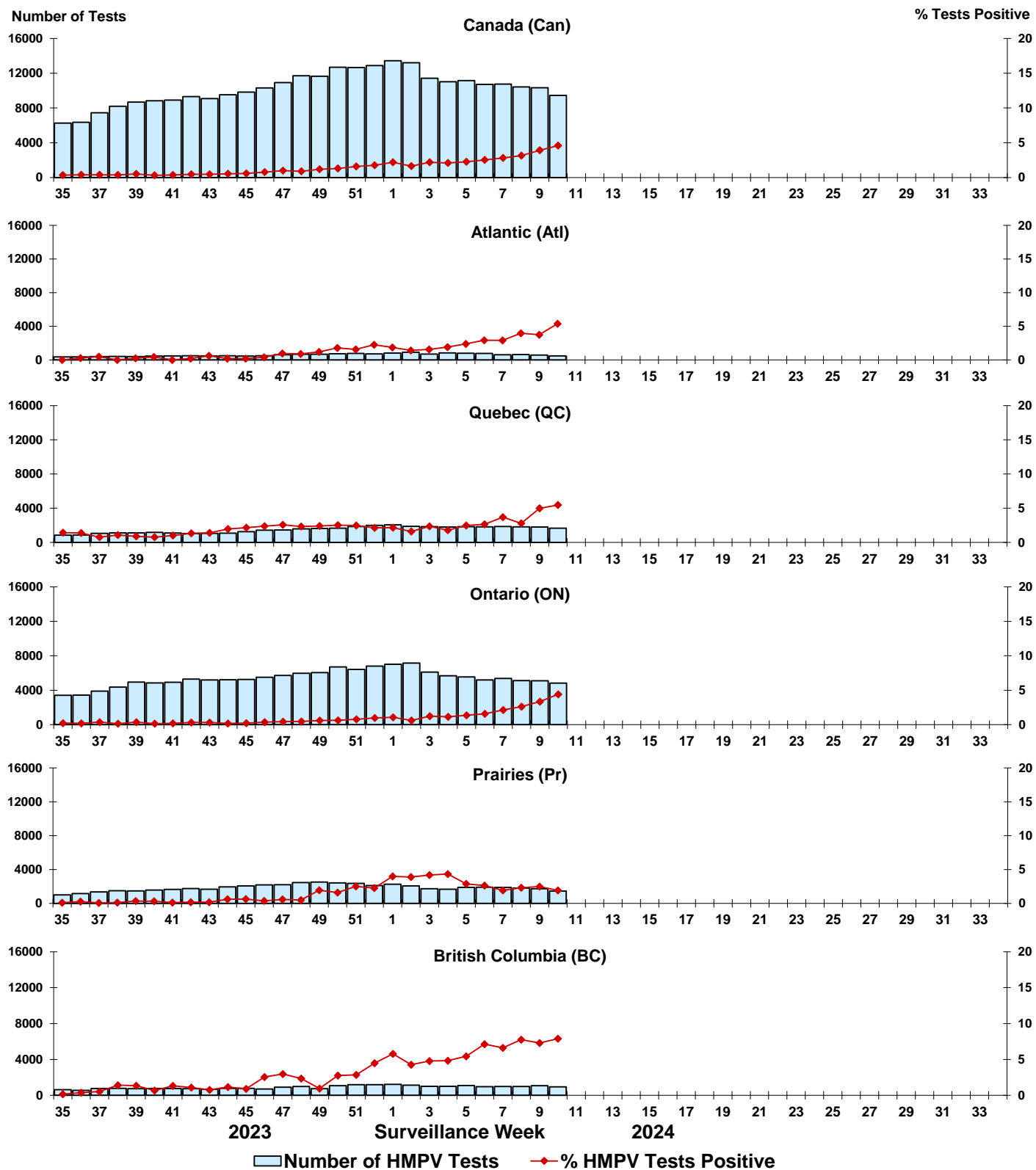


Figure 9: Positive Enterovirus/Rhinovirus (EV/RV) tests (%) in Canada by region by surveillance week

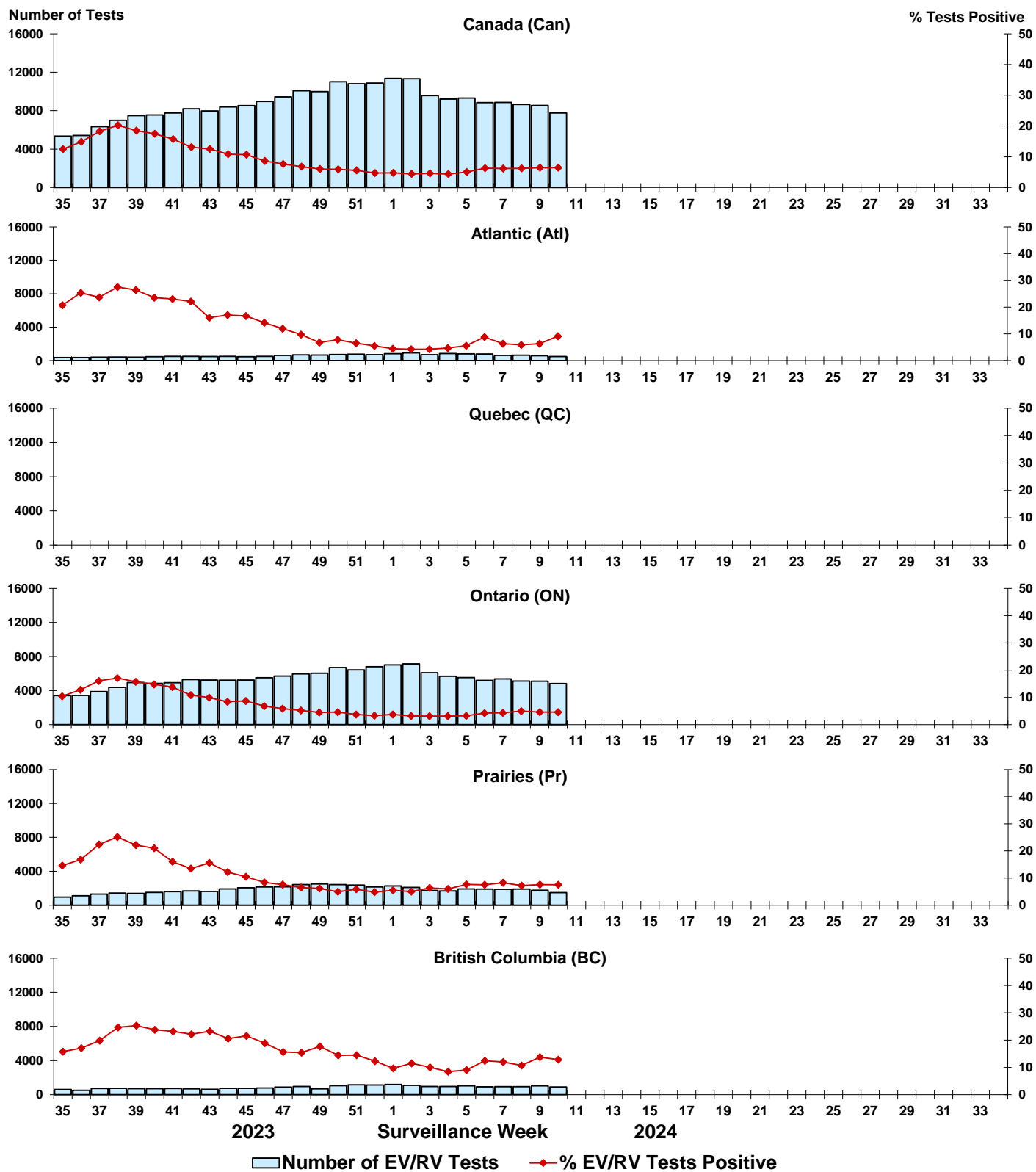


Figure 10: Positive Human coronavirus (HCoV) tests (%) in Canada by region by surveillance week

