

# RESPIRATORY VIRUS DETECTION REPORT

September 10 to September 16, 2023  
(Surveillance Week 2023-37)



Please note that the Respiratory Virus Detection Surveillance System (RVDSS) is a sentinel laboratory surveillance system that does not capture all respiratory virus testing performed in Canada; differences may exist between the data presented in this report and provincial/territorial epidemiological reports. SARS-CoV-2 laboratory data is included in this report to facilitate the comparison of positivity with other respiratory viruses. Interpretation should be made with caution as testing practices differ among viruses.

For additional SARS-CoV-2 surveillance information, please refer to the [COVID-19 epidemiology update](#).

## Overall Summary

In week 37 (week ending September 16, 2023) in Canada, participating RVDSS laboratories reported 5,140 detections of SARS-CoV-2 from 30,976 tests (16.6% positive). Among non-SARS-CoV-2 respiratory viruses, where test volumes are lower (range of 5,646 to 17,363 tests), activity of enterovirus/rhinovirus is highest.

- There has been an observed increase in national SARS-CoV-2 percent positivity since early-July.
- While activity of enterovirus/rhinovirus is highest and increasing, this is expected for this time of year and activity remains below expected levels (1,056 detections; 18.1% positive).
- Activity of all other non-SARS-CoV-2 respiratory viruses is low and near expected levels typical of this time of year.
- 33/34 sentinel laboratories reported surveillance data

## Abbreviations

ADV: Adenovirus

Atl: Atlantic Canada

BC: British Columbia

Can: Canada

EORLA: Eastern Ontario Regional Laboratory Association

EV/RV: Enterovirus/Rhinovirus

Flu: Influenza

Flu A(H1N1)pdm09: Influenza A(H1N1)pdm09

Flu A(H3): Influenza A(H3N2)

Flu A (UnS): Influenza A(Unsubtyped)

HCoV: Human coronavirus 229E/OC43/NL63/HKU1

HMPV: Human metapneumovirus

HPIV: Human parainfluenza virus

HSC: Health Sciences Centre

N.C.: Data not collected

N.R.: Data not reported for current week

ON: Ontario

PR: Prairies

P.H.O.L.: Public Health Ontario Laboratory

QC: Quebec

RSV: Respiratory syncytial virus

RVDSS: Respiratory Virus Detection Surveillance System

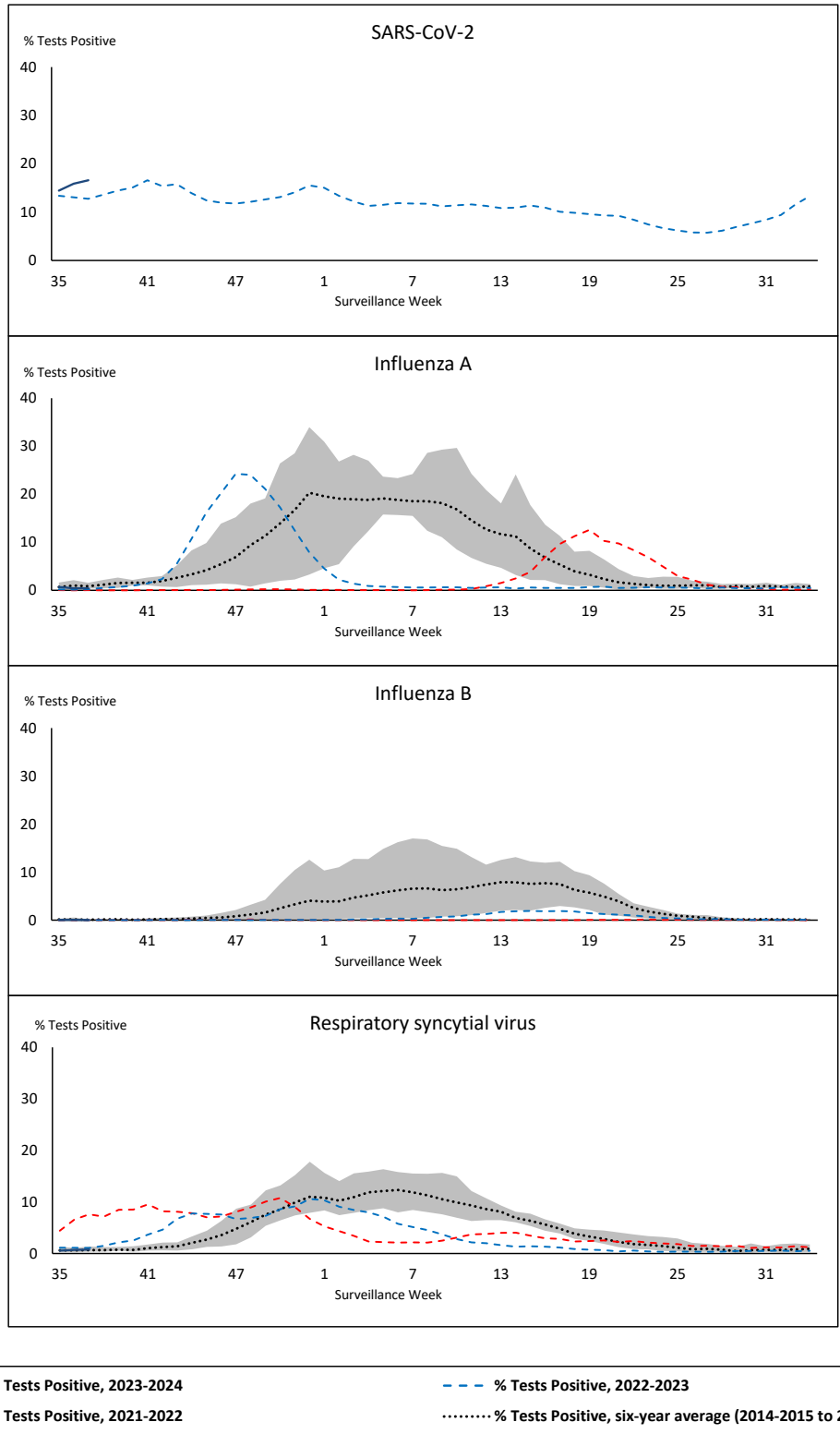
SARS-CoV-2: Severe acute respiratory syndrome coronavirus 2

Terr: Territories of Canada

UHN: University Health Network



**Figure 1: Positive severe acute respiratory syndrome coronavirus 2 (SARS-CoV-2), influenza, and respiratory syncytial virus tests (%) reported by participating laboratories in Canada by surveillance week compared to average and range from 2014-2015 to 2019-2020 season**



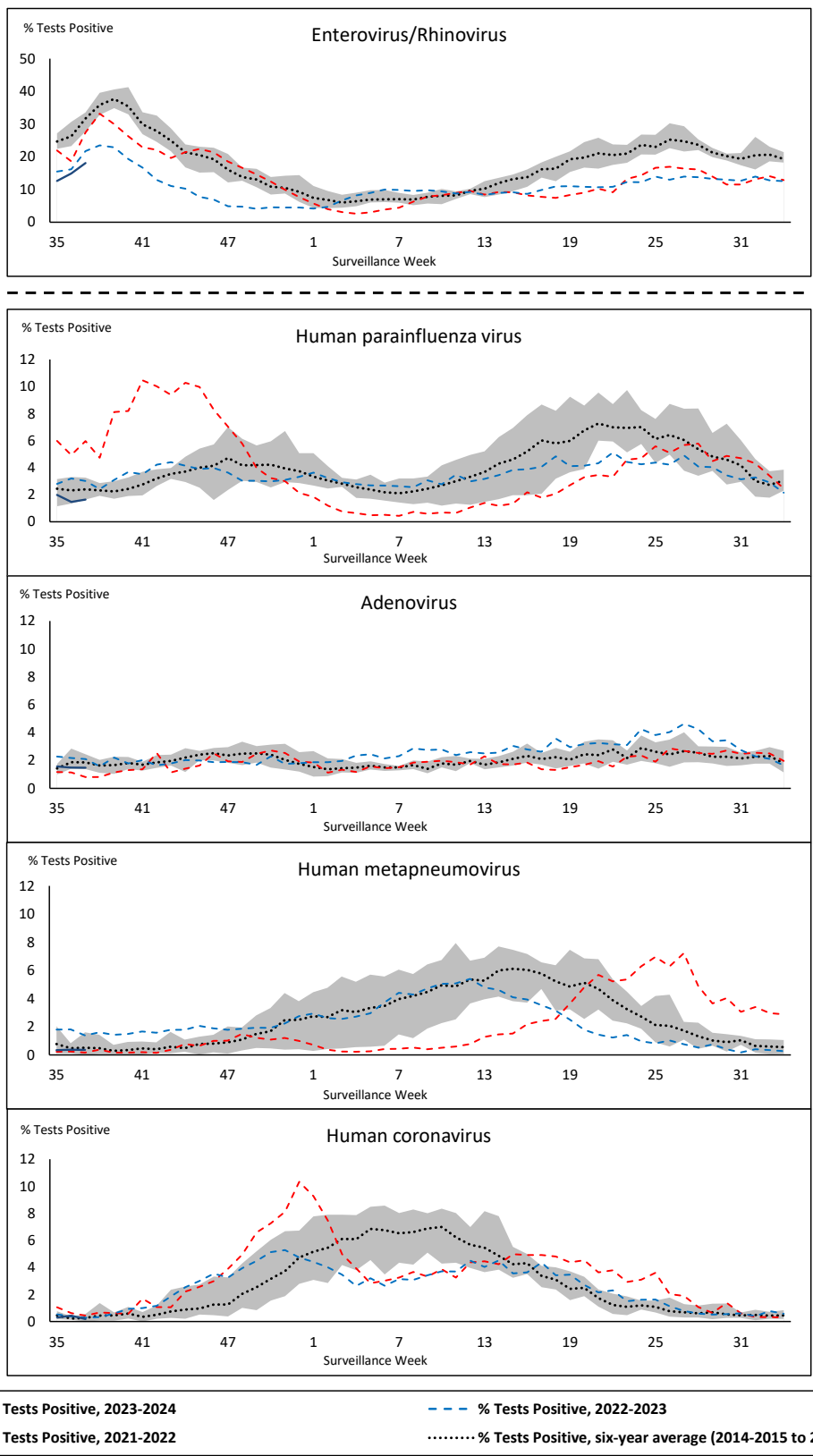
Shaded area represents the maximum and minimum % of respiratory virus tests positive reported by week from seasons 2014-2015 to 2019-2020

Note: Changes to testing practices during the COVID-19 pandemic may cause substantial changes to indicator estimates from previous years. Collection of laboratory testing practice meta-data to understand these changes is ongoing. Interpret trends with caution.

Note: SARS-CoV-2 surveillance was integrated into RVDSS at the beginning of the 2022-2023 season; no prior data is available for historical comparison.

Note: Data from week 11 of the 2019-2020 season onwards are excluded from the historical comparison due to the COVID-19 pandemic.

**Figure 2: Positive tests (%) of other respiratory viruses reported by participating laboratories in Canada by surveillance week compared to average and range from 2014-2015 to 2019-2020 season**



Shaded area represents the maximum and minimum % of respiratory virus tests positive reported by week from seasons 2014-2015 to 2019-2020

Note: Changes to testing practices during the COVID-19 pandemic may cause substantial changes to indicator estimates from previous years. Collection of laboratory testing practice meta-data to understand these changes is ongoing. Interpret trends with caution.

Note: Data from week 11 of the 2019-2020 season onwards are excluded from the historical comparison due to the COVID-19 pandemic.

Note: % Tests Positive scale changes across the dashed line

**Table 1: Respiratory virus detections for the week ending September 16, 2023 (surveillance week 2023-37)**

Reporting Laboratory	SARS-CoV-2 Tested	SARS-CoV-2 Positive	Flu Tested	A(H1)pdm09 Positive	A(H3) Positive	A(UnS) Positive	Total Flu A Positive	Total Flu B Positive	RSV Tested	RSV Positive	HPIV Tested	HPIV 1 Positive	HPIV 2 Positive	HPIV 3 Positive	HPIV 4 Positive	Other HPIV Positive	ADV Tested	ADV Positive	HMPV Tested	HMPV Positive	EV/RV Tested	EV/RV Positive	HCoV Tested	HCoV Positive	
Newfoundland	479	67	296	0	0	0	0	0	296	3	296	1	1	0	1	0	296	5	296	2	296	62	296	1	
Prince Edward Island	102	8	10	0	0	0	0	0	10	0	9	0	0	0	1	0	9	2	9	0	9	5	9	0	
Nova Scotia	1131	281	412	0	0	0	0	0	412	0	45	2	1	0	1	0	45	0	45	0	45	15	45	0	
New Brunswick	807	122	498	0	0	1	1	0	483	0	51	2	0	0	0	0	51	1	51	0	51	13	51	1	
<b>Atlantic</b>	<b>2519</b>	<b>478</b>	<b>1216</b>	<b>0</b>	<b>0</b>	<b>1</b>	<b>1</b>	<b>0</b>	<b>1201</b>	<b>3</b>	<b>401</b>	<b>5</b>	<b>2</b>	<b>0</b>	<b>3</b>	<b>0</b>	<b>401</b>	<b>8</b>	<b>401</b>	<b>2</b>	<b>401</b>	<b>95</b>	<b>401</b>	<b>2</b>	
Région Nord-Est	1429	190	934	0	0	1	1	0	191	2	46	1	0	0	0	0	46	0	46	0	N.C.	N.C.	46	0	
Québec-Chaudière-Appalaches	1989	339	468	0	0	1	1	0	468	11	242	2	0	1	0	0	259	10	242	2	N.C.	N.C.	242	0	
Centre-du-Québec	2103	478	242	0	0	0	0	1	241	5	24	0	1	0	1	0	24	1	24	0	N.C.	N.C.	24	0	
Montréal-Laval	3315	513	1299	0	0	8	8	1	1159	17	686	7	3	1	3	0	686	13	686	6	N.C.	N.C.	686	1	
Ouest du Québec	1537	345	418	0	0	1	1	1	418	6	20	1	1	0	0	0	20	2	20	0	N.C.	N.C.	20	0	
Montérégie	1315	252	789	0	0	6	6	0	677	11	7	1	0	0	0	0	7	0	7	0	N.C.	N.C.	7	0	
<b>Province of Québec</b>	<b>11688</b>	<b>2117</b>	<b>4150</b>	<b>0</b>	<b>0</b>	<b>17</b>	<b>17</b>	<b>3</b>	<b>3154</b>	<b>52</b>	<b>1025</b>	<b>12</b>	<b>5</b>	<b>2</b>	<b>4</b>	<b>0</b>	<b>1042</b>	<b>26</b>	<b>1025</b>	<b>8</b>	<b>N.C.</b>	<b>N.C.</b>	<b>1025</b>	<b>1</b>	
P.H.O.L. - Ottawa	482	162	260	0	0	0	0	0	260	2	96	0	0	0	0	0	96	0	96	0	96	16	96	0	
EOURLA	1075	113	353	0	0	0	0	0	353	12	47	0	0	1	0	0	47	0	47	0	47	13	47	0	
P.H.O.L. - Kingston	214	60	95	0	0	0	0	0	95	0	69	0	0	0	0	2	69	0	69	0	69	16	69	0	
UHN / Mount Sinai Hospital	948	60	549	0	0	1	1	0	549	0	25	0	0	0	0	0	25	1	25	0	25	2	25	0	
P.H.O.L. - Toronto	522	187	890	4	3	1	6	0	890	2	822	0	0	0	0	26	822	9	822	4	822	200	822	1	
Shared Hospital Laboratory	863	71	863	0	0	0	0	0	863	15	861	0	0	0	0	8	861	10	862	0	862	81	862	5	
P.H.O.L. - Sault Ste. Marie	8	6	9	0	0	0	0	0	9	0	9	0	0	0	0	0	9	0	9	0	9	2	9	0	
P.H.O.L. - Timmins	41	10	38	0	0	0	0	0	38	0	29	0	0	0	0	2	29	1	29	0	29	6	29	0	
St. Joseph's - London	N.R.	N.R.	N.R.	N.R.	N.R.	N.R.	N.R.	N.R.	N.R.	N.R.	N.R.	N.R.	N.R.	N.R.	N.R.	N.R.	N.R.	N.R.	N.R.	N.R.	N.R.	N.R.	N.R.	N.R.	N.R.
P.H.O.L. - London	401	105	283	0	0	0	0	0	283	1	214	0	0	0	0	3	214	2	214	0	214	45	214	0	
P.H.O.L. - Orillia	13	1	25	0	0	0	0	0	25	0	25	0	0	0	0	0	25	1	25	0	25	6	25	0	
P.H.O.L. - Thunder Bay	53	13	28	0	0	0	0	0	28	0	26	0	0	0	0	0	26	0	26	0	26	3	26	0	
P.H.O.L. - Sudbury	27	16	33	0	0	0	0	0	33	0	21	0	0	0	0	0	22	0	21	0	21	6	21	0	
P.H.O.L. - Hamilton	324	66	217	0	1	0	1	0	217	1	148	0	0	0	0	6	148	1	148	4	148	37	148	0	
P.H.O.L. - Peterborough	38	8	51	0	0	0	0	0	51	2	48	0	0	0	0	1	48	0	48	0	48	19	48	0	
St. Joseph's - Hamilton	1542	188	1250	0	0	2	2	0	1250	16	1250	0	0	2	0	0	1250	6	1250	6	1250	134	0	0	
Sault Area Hospital	61	3	61	0	0	0	0	0	54	0	54	0	0	0	0	0	54	1	54	0	54	16	54	0	
<b>Province of Ontario</b>	<b>6612</b>	<b>1069</b>	<b>5005</b>	<b>4</b>	<b>4</b>	<b>4</b>	<b>10</b>	<b>0</b>	<b>4998</b>	<b>51</b>	<b>3744</b>	<b>0</b>	<b>0</b>	<b>3</b>	<b>0</b>	<b>48</b>	<b>3745</b>	<b>32</b>	<b>3745</b>	<b>14</b>	<b>3745</b>	<b>602</b>	<b>2495</b>	<b>6</b>	
Manitoba	1270	183	1006	0	0	2	2	2	1006	0	66	0	0	2	1	0	66	6	102	0	66	27	102	0	
Saskatchewan	1341	121	614	0	0	0	0	0	599	2	233	1	2	0	0	0	233	11	233	0	233	49	233	0	
Alberta	4295	524	2712	8	0	1	9	0	2560	7	797	2	4	1	0	0	797	6	797	0	791	162	797	0	
<b>Prairies</b>	<b>6906</b>	<b>828</b>	<b>4332</b>	<b>8</b>	<b>0</b>	<b>3</b>	<b>11</b>	<b>2</b>	<b>4165</b>	<b>9</b>	<b>1096</b>	<b>3</b>	<b>6</b>	<b>3</b>	<b>1</b>	<b>0</b>	<b>1096</b>	<b>23</b>	<b>1132</b>	<b>0</b>	<b>1090</b>	<b>238</b>	<b>1132</b>	<b>0</b>	
<b>British Columbia</b>	<b>3102</b>	<b>633</b>	<b>2568</b>	<b>14</b>	<b>4</b>	<b>0</b>	<b>34</b>	<b>1</b>	<b>2567</b>	<b>9</b>	<b>624</b>	<b>5</b>	<b>2</b>	<b>2</b>	<b>7</b>	<b>0</b>	<b>624</b>	<b>13</b>	<b>624</b>	<b>1</b>	<b>593</b>	<b>120</b>	<b>593</b>	<b>1</b>	
Yukon	56	5	27	0	0	0	0	0	27	0	N.C.	N.C.	N.C.	N.C.	N.C.	N.C.	N.C.	N.C.	N.C.	N.C.	N.C.	N.C.	N.C.	N.C.	
Northwest Territories	9	2	7	0	0	0	0	0	7	0	N.C.	N.C.	N.C.	N.C.	N.C.	N.C.	N.C.	N.C.	N.C.	N.C.	N.C.	7	1	N.C.	N.C.
Nunavut	84	8	58	0	0	0	0	0	58	0	N.C.	N.C.	N.C.	N.C.	N.C.	N.C.	N.C.	N.C.	N.C.	N.C.	N.C.	N.C.	N.C.	N.C.	
<b>Territories</b>	<b>149</b>	<b>15</b>	<b>92</b>	<b>0</b>	<b>0</b>	<b>0</b>	<b>0</b>	<b>0</b>	<b>92</b>	<b>0</b>	<b>N.C.</b>	<b>N.C.</b>	<b>N.C.</b>	<b>N.C.</b>	<b>N.C.</b>	<b>N.C.</b>	<b>N.C.</b>	<b>N.C.</b>	<b>N.C.</b>	<b>N.C.</b>	<b>N.C.</b>	<b>7</b>	<b>1</b>	<b>N.C.</b>	<b>N.C.</b>
<b>CANADA</b>	<b>30976</b>	<b>5140</b>	<b>17363</b>	<b>26</b>	<b>8</b>	<b>25</b>	<b>73</b>	<b>6</b>	<b>16177</b>	<b>124</b>	<b>6890</b>	<b>25</b>	<b>15</b>	<b>10</b>	<b>15</b>	<b>48</b>	<b>6908</b>	<b>102</b>	<b>6927</b>	<b>25</b>	<b>5836</b>	<b>1056</b>	<b>5646</b>	<b>10</b>	

The data in the RVDSS report represent surveillance data available at the time of writing. Data missing from the current week are denoted by N.R. Data not collected by reporting lab denoted by N.C.

Some specimens from Yukon (YT) are sent to reference laboratories in British Columbia and reported results reflect specimens identified as originating from YT.

Results from British Columbia comprise of specimens from the following sites: Children's and Women's Hospital Laboratory, Fraser Health Medical Microbiology Laboratory, Island Health, Providence Health Care, Vancouver Coastal Health sites, Victoria General Hospital, BCCDC Public Health Laboratory, Interior Health Authority sites and Northern Health Authority sites.

Due to different testing protocols of laboratories across Canada, influenza A subtype detection counts may not be included in total influenza A detection counts. Total influenza A and B positive counts are used to calculate percentage of tests

Delays in the reporting of data may cause data to change retrospectively.

**Table 2: Cumulative respiratory virus detections from August 27, 2023 to September 16, 2023 (surveillance weeks 2023-35 to 2023-37)**

Reporting Laboratory	SARS-CoV-2 Tested	SARS-CoV-2 Positive	Flu Tested	A(H1)pdm09 Positive	A(H3) Positive	A(UnS) Positive	Total Flu A Positive	Total Flu B Positive	RSV Tested	RSV Positive	HPIV Tested	HPIV 1 Positive	HPIV 2 Positive	HPIV 3 Positive	HPIV 4 Positive	Other HPIV Positive	ADV Tested	ADV Positive	HMPV Tested	HMPV Positive	EV/RV Tested	EV/RV Positive	HCoV Tested	HCoV Positive	
Newfoundland	1381	227	858	0	0	0	0	0	858	6	858	1	1	1	6	0	858	11	858	2	858	195	858	3	
Prince Edward Island	373	44	28	0	0	0	0	0	28	0	23	0	0	0	1	0	23	4	23	0	23	11	23	0	
Nova Scotia	3131	738	1136	0	0	0	0	0	1136	1	92	5	1	0	1	0	92	3	92	1	92	22	92	0	
New Brunswick	2090	300	1225	0	0	1	1	0	1195	2	145	2	1	0	1	0	145	4	145	0	145	32	145	1	
<b>Atlantic</b>	<b>6975</b>	<b>1309</b>	<b>3247</b>	<b>0</b>	<b>0</b>	<b>1</b>	<b>1</b>	<b>0</b>	<b>3217</b>	<b>9</b>	<b>1118</b>	<b>8</b>	<b>3</b>	<b>1</b>	<b>9</b>	<b>0</b>	<b>1118</b>	<b>22</b>	<b>1118</b>	<b>3</b>	<b>1118</b>	<b>260</b>	<b>1118</b>	<b>4</b>	
Région Nord-Est	3815	514	2713	0	0	3	3	0	507	4	147	2	2	0	6	0	147	1	146	5	N.C.	N.C.	147	0	
Québec-Chaudière-Appalaches	5317	814	1289	0	0	4	4	1	1289	23	617	4	0	1	2	0	649	34	617	8	N.C.	N.C.	617	1	
Centre-du-Québec	5439	1108	641	0	0	1	1	1	638	11	90	3	2	1	2	0	90	3	90	0	N.C.	N.C.	90	1	
Montréal-Laval	9120	1432	3448	0	0	14	14	3	3125	43	1821	19	6	7	10	0	1821	28	1822	17	N.C.	N.C.	1821	9	
Ouest du Québec	4047	845	1033	0	0	2	2	2	1033	20	48	2	2	1	2	0	48	3	48	2	N.C.	N.C.	48	1	
Montérégie	3515	702	2015	0	0	8	8	2	1852	25	17	1	0	0	0	0	17	0	17	0	N.C.	N.C.	17	0	
<b>Province of Québec</b>	<b>31253</b>	<b>5415</b>	<b>11139</b>	<b>0</b>	<b>0</b>	<b>32</b>	<b>32</b>	<b>9</b>	<b>8444</b>	<b>126</b>	<b>2740</b>	<b>31</b>	<b>12</b>	<b>10</b>	<b>22</b>	<b>0</b>	<b>2772</b>	<b>69</b>	<b>2740</b>	<b>32</b>	<b>N.C.</b>	<b>N.C.</b>	<b>2740</b>	<b>12</b>	
P.H.O.L. - Ottawa	1322	490	631	1	0	0	1	0	631	5	324	0	0	0	0	2	324	0	324	0	324	56	324	0	
EORLA	3118	331	999	0	0	2	2	0	999	29	82	0	1	1	0	0	82	0	82	0	82	18	82	0	
P.H.O.L. - Kingston	649	152	236	0	0	0	0	0	236	0	194	0	0	0	0	8	194	0	194	0	194	52	194	0	
UHN / Mount Sinai Hospital	2604	143	1404	0	0	2	2	2	1404	1	59	0	0	2	0	0	59	1	59	0	59	4	59	0	
P.H.O.L. - Toronto	1477	416	2254	22	6	1	20	0	2254	6	2089	0	0	0	0	72	2089	26	2087	7	2089	460	2087	5	
Shared Hospital Laboratory	2615	204	2615	2	4	0	6	1	2615	39	2611	0	0	0	0	28	2611	23	2618	4	2618	200	2618	6	
P.H.O.L. - Sault Ste. Marie	12	6	15	0	0	0	0	0	15	0	15	0	0	0	0	0	15	0	15	0	15	2	15	0	
P.H.O.L. - Timmins	70	11	53	0	0	0	0	0	53	0	41	0	0	0	0	2	41	1	41	0	41	10	41	0	
St. Joseph's - London	1088	79	75	0	0	0	0	0	75	1	75	0	0	0	0	0	75	0	75	0	75	7	75	0	
P.H.O.L. - London	1021	307	695	0	0	0	0	1	695	2	542	0	0	0	0	16	542	3	542	0	542	108	542	0	
P.H.O.L. - Orillia	57	7	95	0	0	0	0	0	95	1	86	0	0	0	0	2	86	1	86	0	86	24	86	0	
P.H.O.L. - Thunder Bay	142	38	75	0	0	0	0	0	75	0	63	0	0	0	0	1	63	1	63	1	63	12	63	0	
P.H.O.L. - Sudbury	46	19	55	0	0	0	0	0	55	0	41	0	0	0	0	0	42	0	41	0	41	12	41	0	
P.H.O.L. - Hamilton	858	241	590	1	1	0	1	0	590	2	373	0	0	0	0	16	373	4	373	4	373	79	373	0	
P.H.O.L. - Peterborough	101	15	121	0	0	0	0	0	121	5	111	0	0	0	0	1	111	1	111	0	111	41	111	0	
St. Joseph's - Hamilton	4260	431	3575	0	0	6	6	4	3575	28	3575	0	0	7	0	0	3575	21	3575	11	3575	271	0	0	
Sault Area Hospital	172	10	149	0	1	0	1	0	142	2	142	0	0	0	0	0	142	3	142	0	142	29	152	0	
<b>Province of Ontario</b>	<b>19612</b>	<b>2900</b>	<b>13637</b>	<b>26</b>	<b>12</b>	<b>11</b>	<b>39</b>	<b>8</b>	<b>13630</b>	<b>121</b>	<b>10423</b>	<b>0</b>	<b>1</b>	<b>10</b>	<b>0</b>	<b>148</b>	<b>10424</b>	<b>85</b>	<b>10428</b>	<b>27</b>	<b>10430</b>	<b>1385</b>	<b>6863</b>	<b>11</b>	
Manitoba	3698	540	2992	0	0	5	5	2	2992	0	174	0	2	2	4	0	174	16	271	0	174	65	271	1	
Saskatchewan	3506	286	1569	0	0	1	1	0	1530	4	640	2	4	0	0	0	640	27	619	3	609	130	640	2	
Alberta	10833	1249	7476	28	12	1	41	2	7075	13	2417	7	9	3	2	0	2417	26	2406	0	2379	371	2417	13	
<b>Prairies</b>	<b>18037</b>	<b>2075</b>	<b>12037</b>	<b>28</b>	<b>12</b>	<b>7</b>	<b>47</b>	<b>4</b>	<b>11597</b>	<b>17</b>	<b>3231</b>	<b>9</b>	<b>15</b>	<b>5</b>	<b>6</b>	<b>0</b>	<b>3231</b>	<b>69</b>	<b>3296</b>	<b>3</b>	<b>3162</b>	<b>566</b>	<b>3328</b>	<b>16</b>	
<b>British Columbia</b>	<b>8394</b>	<b>1552</b>	<b>6843</b>	<b>73</b>	<b>18</b>	<b>5</b>	<b>118</b>	<b>3</b>	<b>6826</b>	<b>21</b>	<b>1804</b>	<b>8</b>	<b>5</b>	<b>6</b>	<b>19</b>	<b>0</b>	<b>1804</b>	<b>47</b>	<b>1804</b>	<b>4</b>	<b>1717</b>	<b>304</b>	<b>1717</b>	<b>4</b>	
Yukon	181	30	102	0	1	0	2	0	102	0	N.C.	N.C.	N.C.	N.C.	N.C.	N.C.	N.C.	N.C.	N.C.	N.C.	N.C.	N.C.	N.C.	N.C.	
Northwest Territories	11	3	8	0	0	0	0	0	8	0	N.C.	N.C.	N.C.	N.C.	N.C.	N.C.	N.C.	N.C.	N.C.	N.C.	N.C.	8	1	N.C.	N.C.
Nunavut	208	18	159	0	0	0	0	0	159	1	N.C.	N.C.	N.C.	N.C.	N.C.	N.C.	N.C.	N.C.	N.C.	N.C.	N.C.	N.C.	N.C.	N.C.	
<b>Territories</b>	<b>400</b>	<b>51</b>	<b>269</b>	<b>0</b>	<b>1</b>	<b>0</b>	<b>2</b>	<b>0</b>	<b>269</b>	<b>1</b>	<b>N.C.</b>	<b>N.C.</b>	<b>N.C.</b>	<b>N.C.</b>	<b>N.C.</b>	<b>N.C.</b>	<b>N.C.</b>	<b>N.C.</b>	<b>N.C.</b>	<b>N.C.</b>	<b>8</b>	<b>1</b>	<b>N.C.</b>	<b>N.C.</b>	
<b>CANADA</b>	<b>84671</b>	<b>13302</b>	<b>47172</b>	<b>127</b>	<b>43</b>	<b>56</b>	<b>239</b>	<b>24</b>	<b>43983</b>	<b>295</b>	<b>19316</b>	<b>56</b>	<b>36</b>	<b>32</b>	<b>56</b>	<b>148</b>	<b>19349</b>	<b>292</b>	<b>19386</b>	<b>69</b>	<b>16435</b>	<b>2516</b>	<b>15766</b>	<b>47</b>	

The data in the RVDSS report represent surveillance data available at the time of writing. Data not collected by reporting lab denoted by N.C.

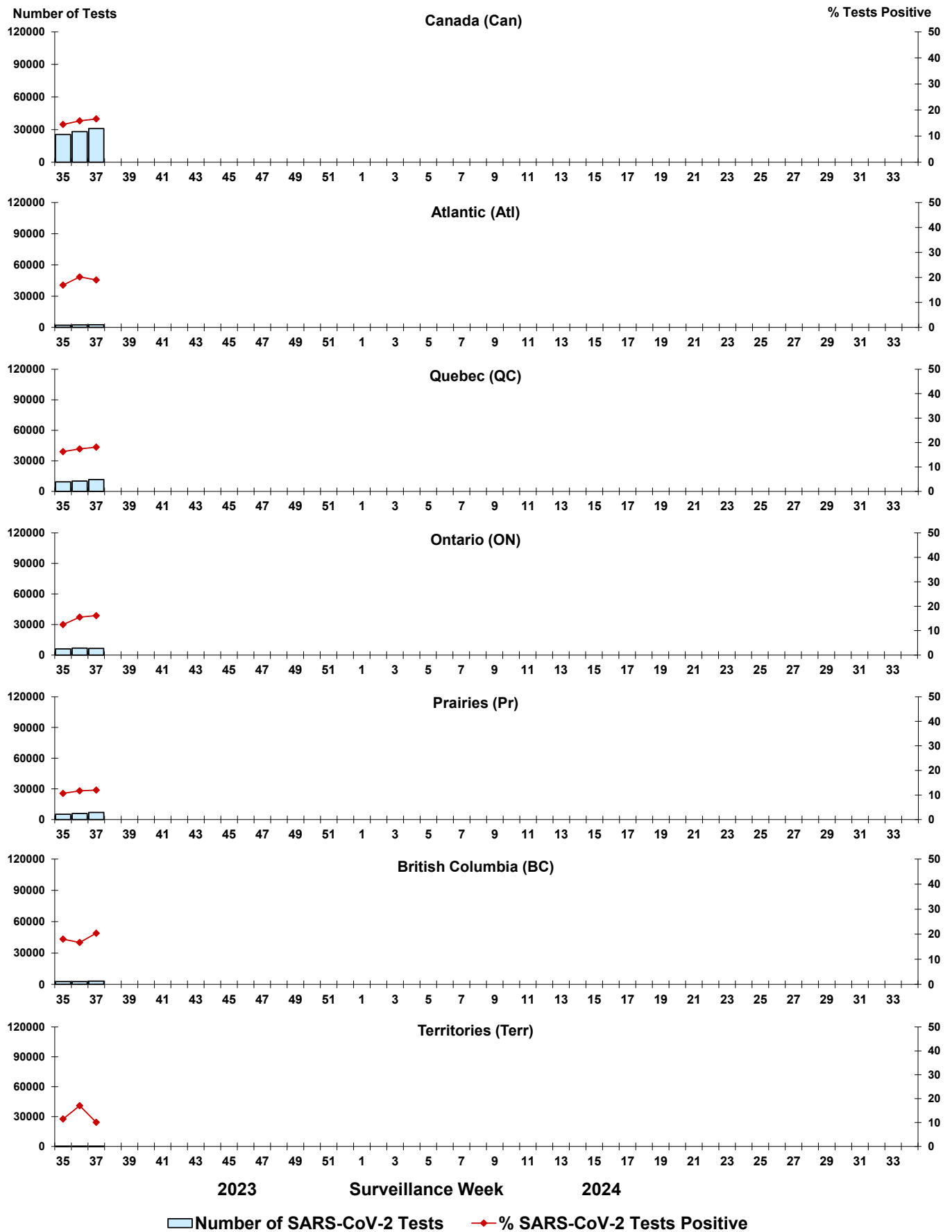
Some specimens from Yukon (YT) are sent to reference laboratories in British Columbia and reported results reflect specimens identified as originating from YT.

Results from British Columbia comprise of specimens from the following sites: Children's and Women's Hospital Laboratory, Fraser Health Medical Microbiology Laboratory, Island Health, Providence Health Care, Vancouver Coastal Health sites, Victoria General Hospital, BCCDC Public Health Laboratory, Interior Health Authority sites and Northern Health Authority sites.

Due to different testing protocols of laboratories across Canada, influenza A subtype detection counts may not be included in total influenza A detection counts. Total influenza A and B positive counts are used to calculate percentage of tests positive.

Delays in the reporting of data may cause data to change retrospectively. Due to these delays, the sum of weekly report totals do not add up to cumulative totals.

**Figure 3: Positive severe acute respiratory syndrome coronavirus 2 (SARS-CoV-2) tests (%) in Canada by region by surveillance week**



Note: Differences in positivity between jurisdictions can reflect differences in testing practices. Please interpret with caution.

Figure 4: Positive Influenza (Flu) tests (%) in Canada by region by surveillance week

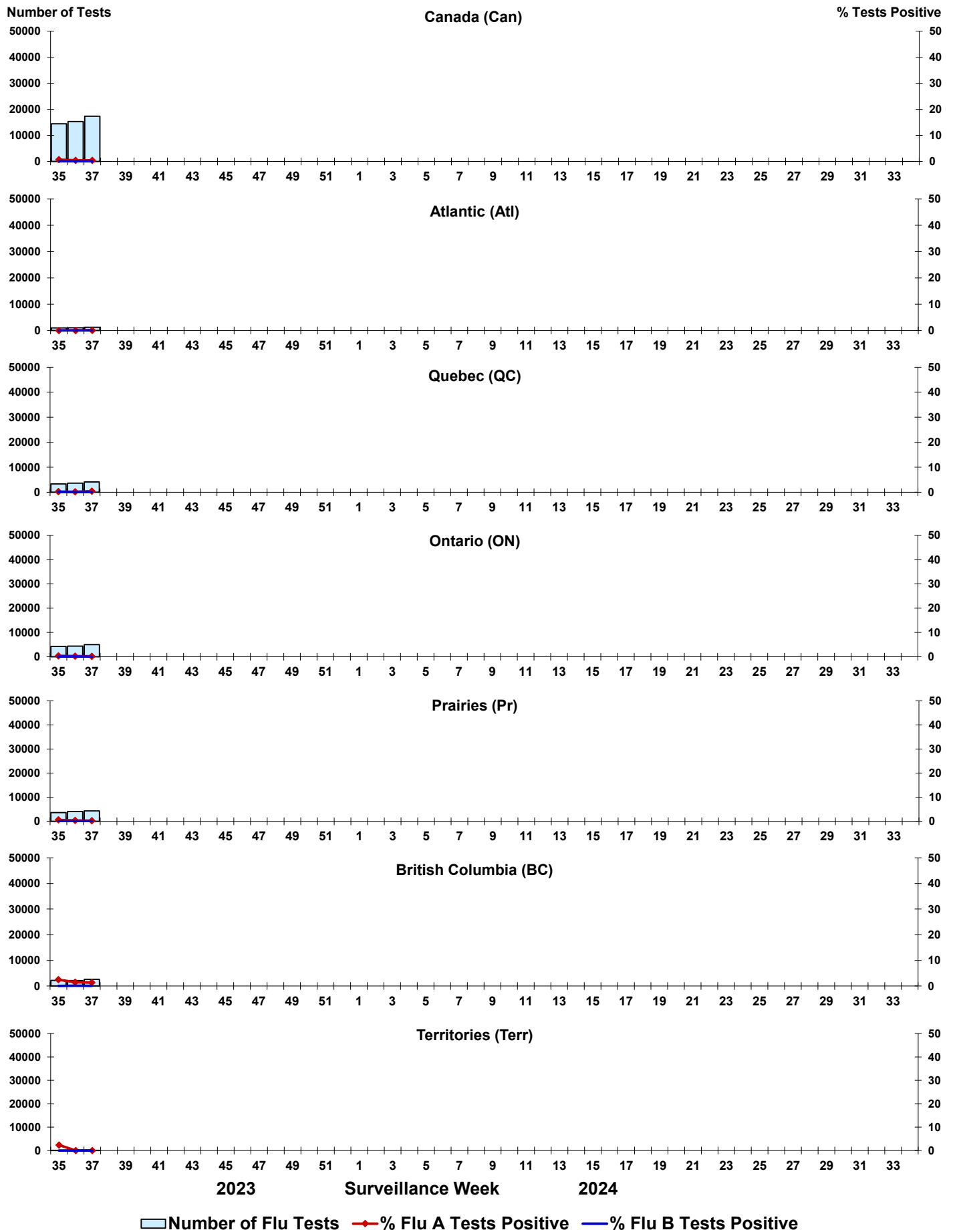


Figure 5: Positive Respiratory syncytial virus (RSV) tests (%) in Canada by region by surveillance week

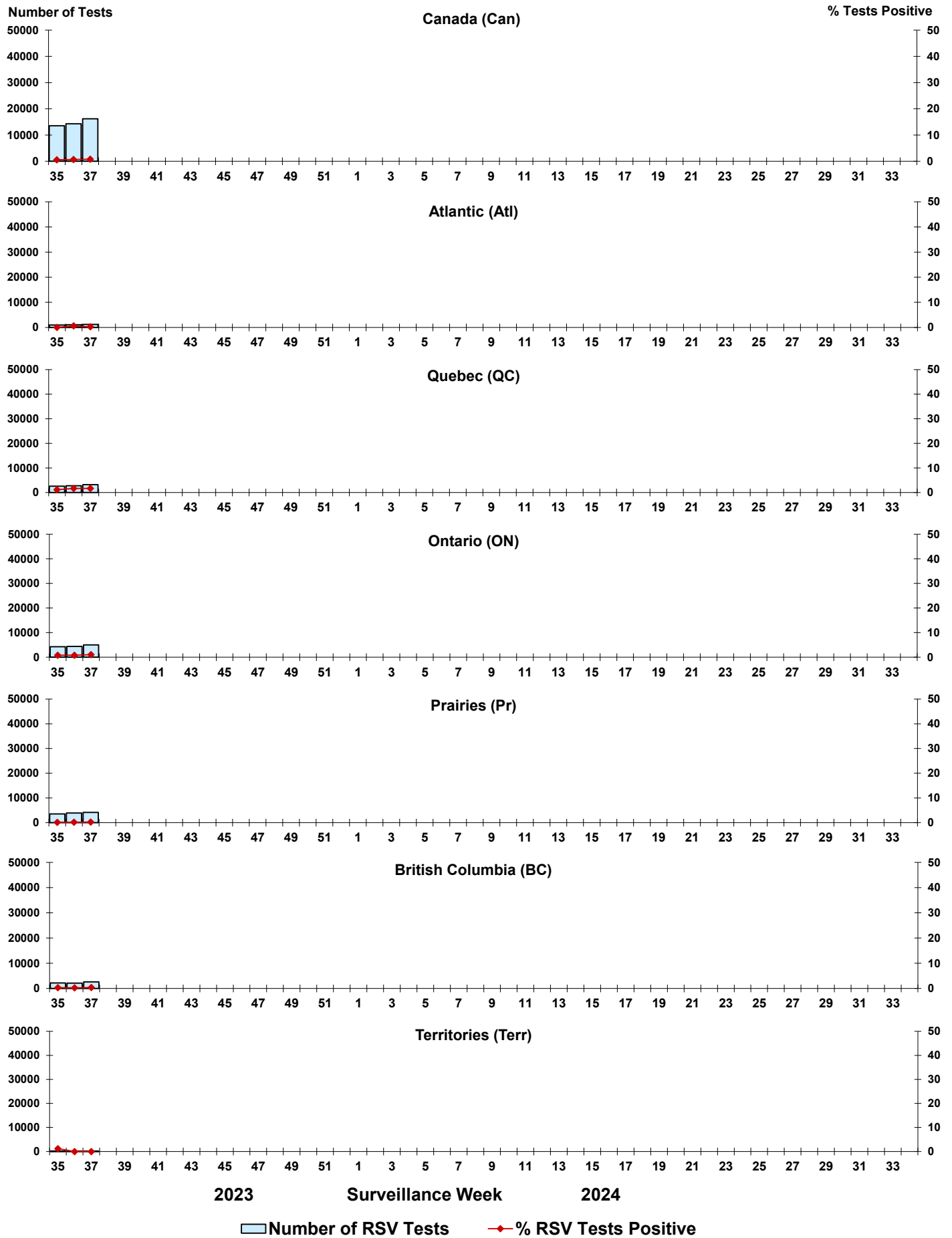




Figure 6: Positive Human parainfluenza virus (HPIV) tests (%) in Canada by region by surveillance week

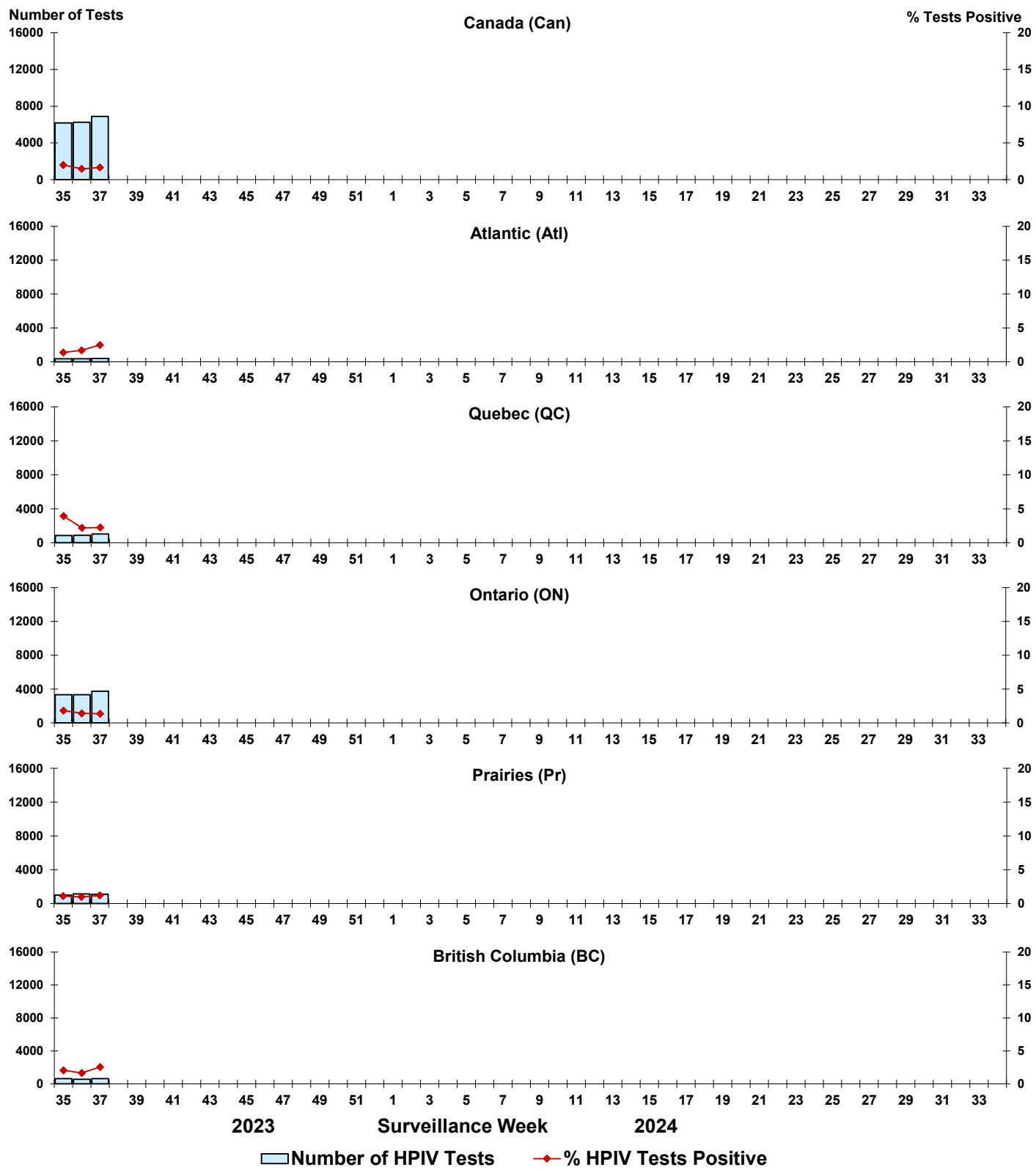


Figure 7: Positive Adenovirus (ADV) tests (%) in Canada by region by surveillance week

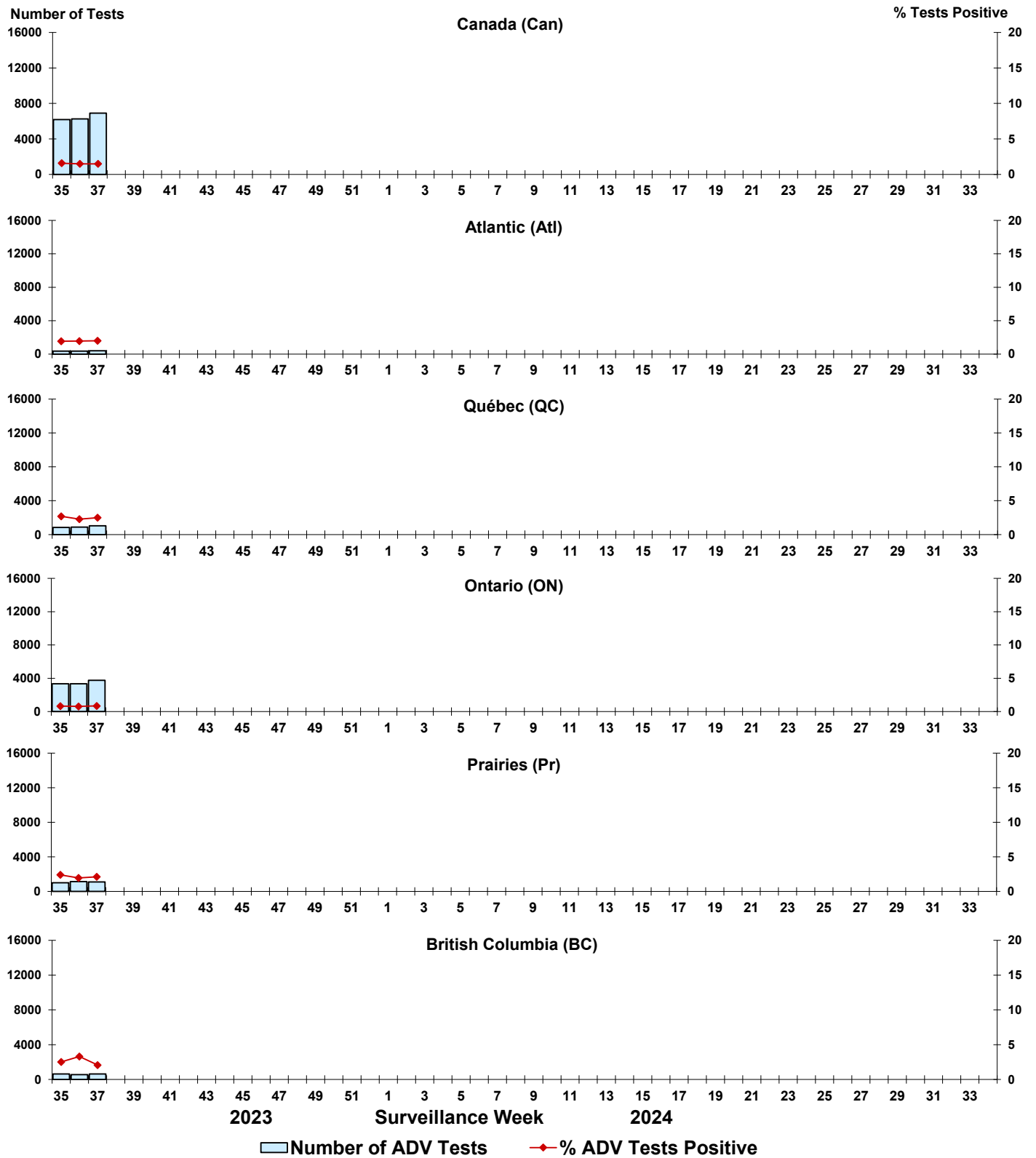


Figure 8: Positive Human metapneumovirus (HMPV) tests (%) in Canada by region by surveillance week

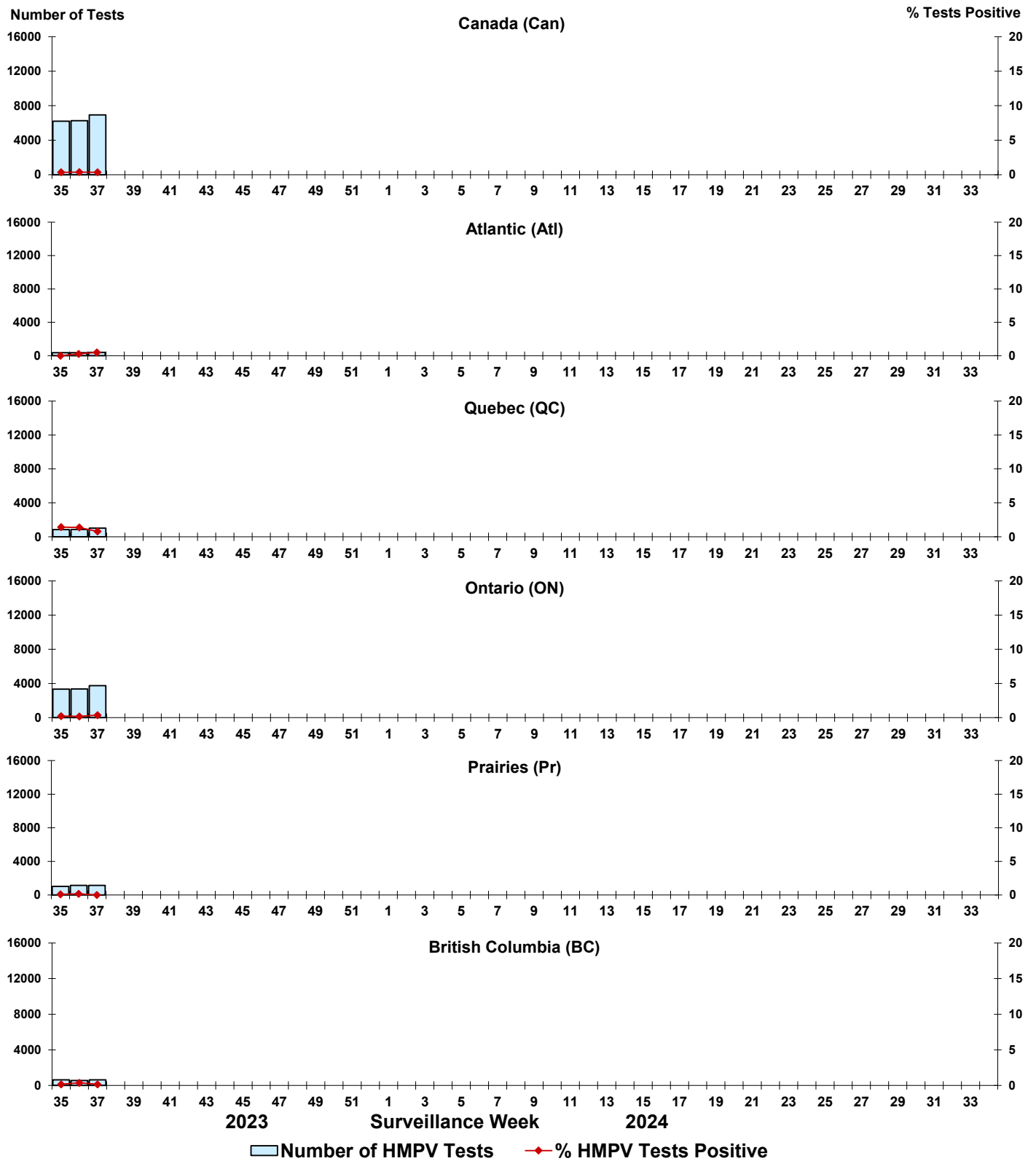


Figure 9: Positive Enterovirus/Rhinovirus (EV/RV) tests (%) in Canada by region by surveillance week

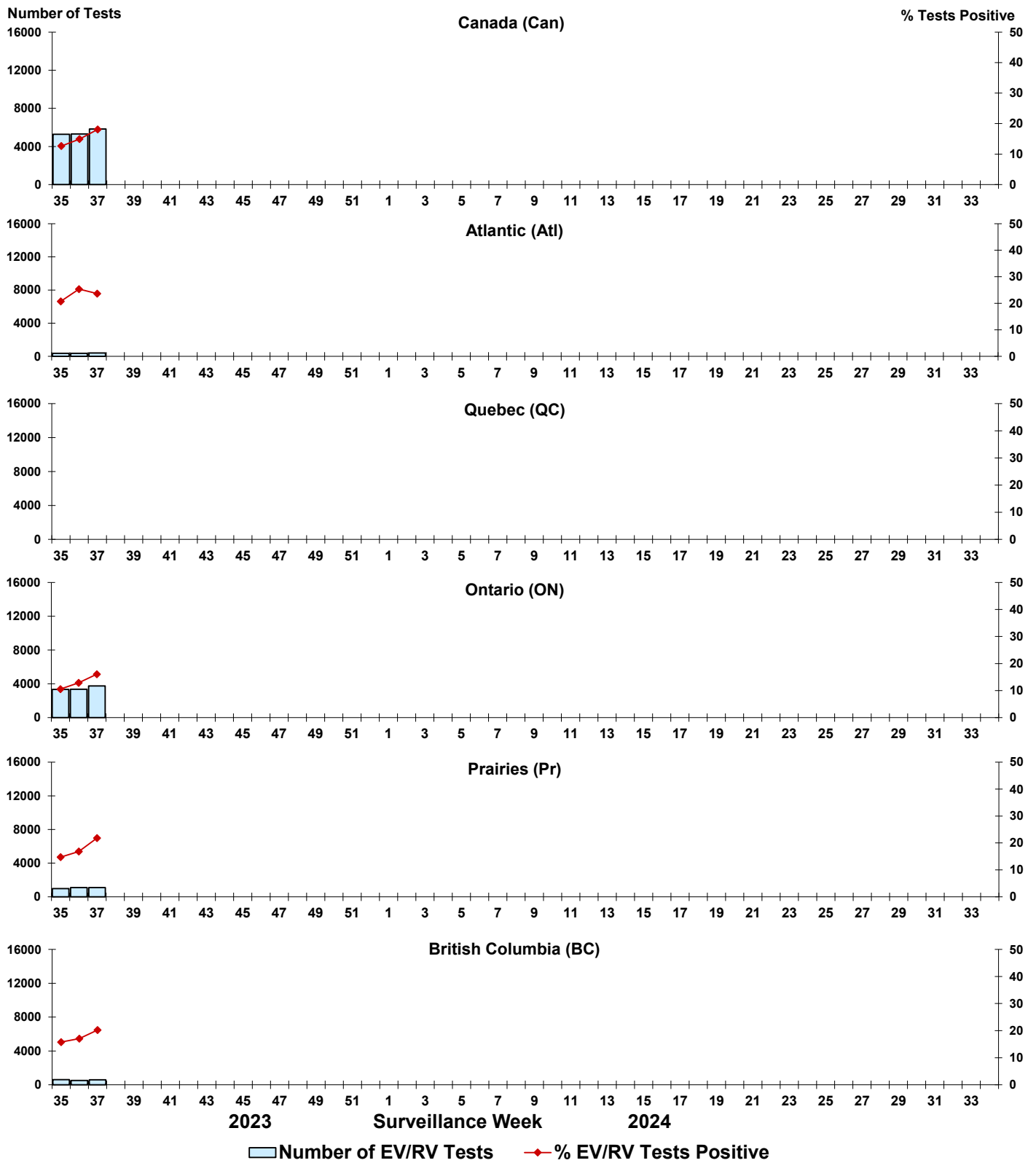


Figure 10: Positive Human coronavirus (HCoV) tests (%) in Canada by region by surveillance week

