

# RESPIRATORY VIRUS DETECTION REPORT

October 8 to October 14, 2023  
(Surveillance Week 2023-41)



Please note that the Respiratory Virus Detection Surveillance System (RVDSS) is a sentinel laboratory surveillance system that does not capture all respiratory virus testing performed in Canada; differences may exist between the data presented in this report and provincial/territorial epidemiological reports. SARS-CoV-2 laboratory data is included in this report to facilitate the comparison of positivity with other respiratory viruses. Interpretation should be made with caution as testing practices differ among viruses.

For additional SARS-CoV-2 surveillance information, please refer to the [COVID-19 epidemiology update](#).

## Overall Summary

In week 41 (week ending October 14, 2023) in Canada, participating RVDSS laboratories reported 6,682 detections of SARS-CoV-2 from 38,153 tests (17.5% positive). Among non-SARS-CoV-2 respiratory viruses, where test volumes are lower (range of 6,142 to 21,711 tests), activity of enterovirus/rhinovirus is highest.

- While there has been an observed increase in national SARS-CoV-2 percent positivity since early-July, some jurisdictions may be showing early signs of decreases.
- While activity of enterovirus/rhinovirus is highest, this is expected for this time of year and activity remains below expected levels (942 detections; 18.5% positive).
- Activity of all other non-SARS-CoV-2 respiratory viruses is low and near expected levels typical of this time of year.
- 34/35 sentinel laboratories reported surveillance data

## Abbreviations

ADV: Adenovirus

Atl: Atlantic Canada

BC: British Columbia

Can: Canada

EORLA: Eastern Ontario Regional Laboratory Association

EV/RV: Enterovirus/Rhinovirus

Flu: Influenza

Flu A(H1N1)pdm09: Influenza A(H1N1)pdm09

Flu A(H3): Influenza A(H3N2)

Flu A (UnS): Influenza A(Unsubtyped)

HCoV: Human coronavirus 229E/OC43/NL63/HKU1

HMPV: Human metapneumovirus

HPIV: Human parainfluenza virus

HSC: Health Sciences Centre

N.C.: Data not collected

N.R.: Data not reported for current week

ON: Ontario

PR: Prairies

P.H.O.L.: Public Health Ontario Laboratory

QC: Quebec

RSV: Respiratory syncytial virus

RVDSS: Respiratory Virus Detection Surveillance System

SARS-CoV-2: Severe acute respiratory syndrome coronavirus 2

Terr: Territories of Canada

UHN: University Health Network

© His Majesty the King in Right of Canada, as represented by the Minister of Health, 2021

ISSN: 2564-2359 | Cat.: HP38-7E-PDF | Pub.: 210284

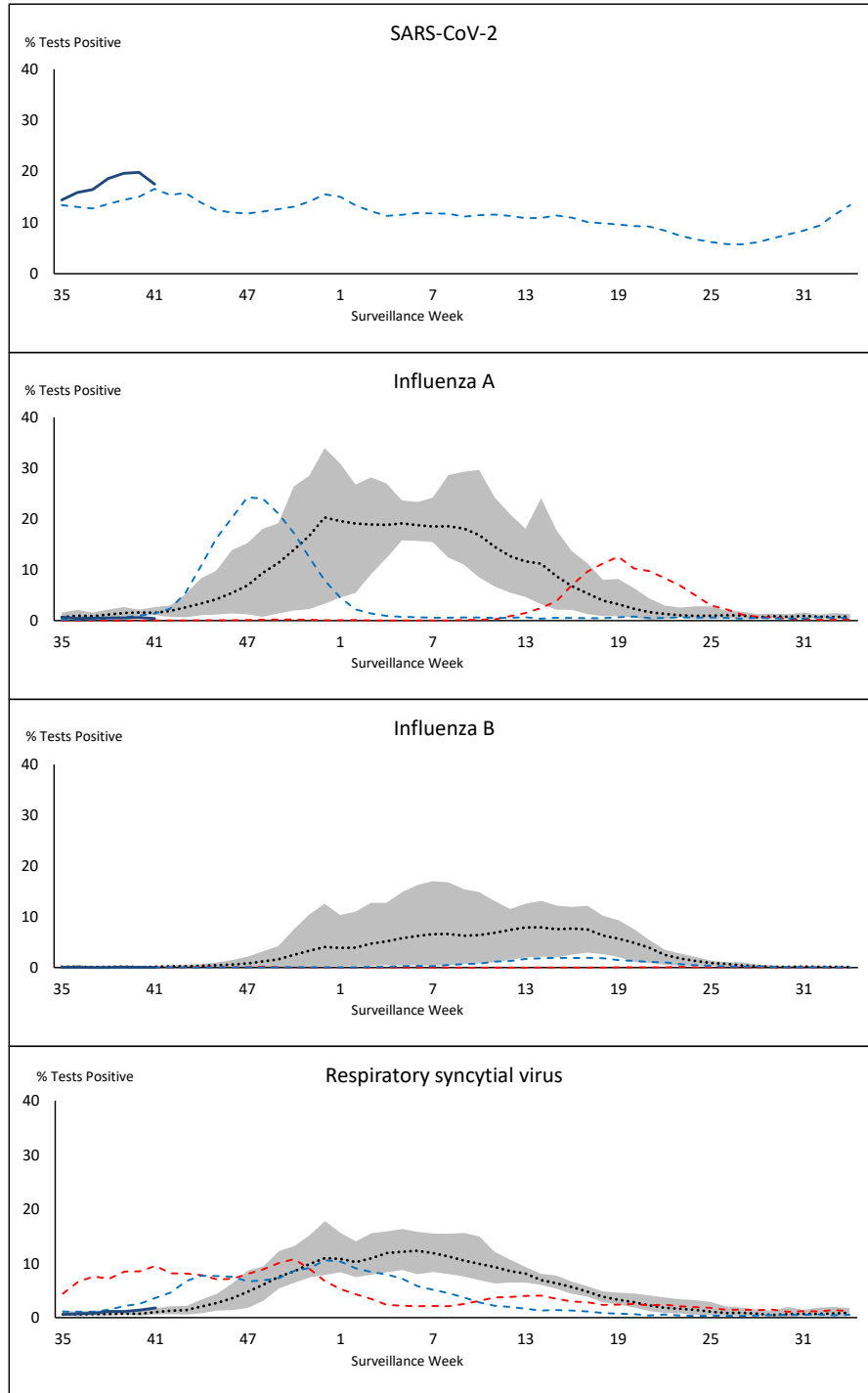


Public Health  
Agency of Canada

Agence de la santé  
publique du Canada

Canada

**Figure 1: Positive severe acute respiratory syndrome coronavirus 2 (SARS-CoV-2), influenza, and respiratory syncytial virus tests (%) reported by participating laboratories in Canada by surveillance week compared to average and range from 2014-2015 to 2019-2020 season**



— % Tests Positive, 2023-2024      - - - % Tests Positive, 2022-2023  
- - - % Tests Positive, 2021-2022      ⋯ % Tests Positive, six-year average (2014-2015 to 2019-2020)

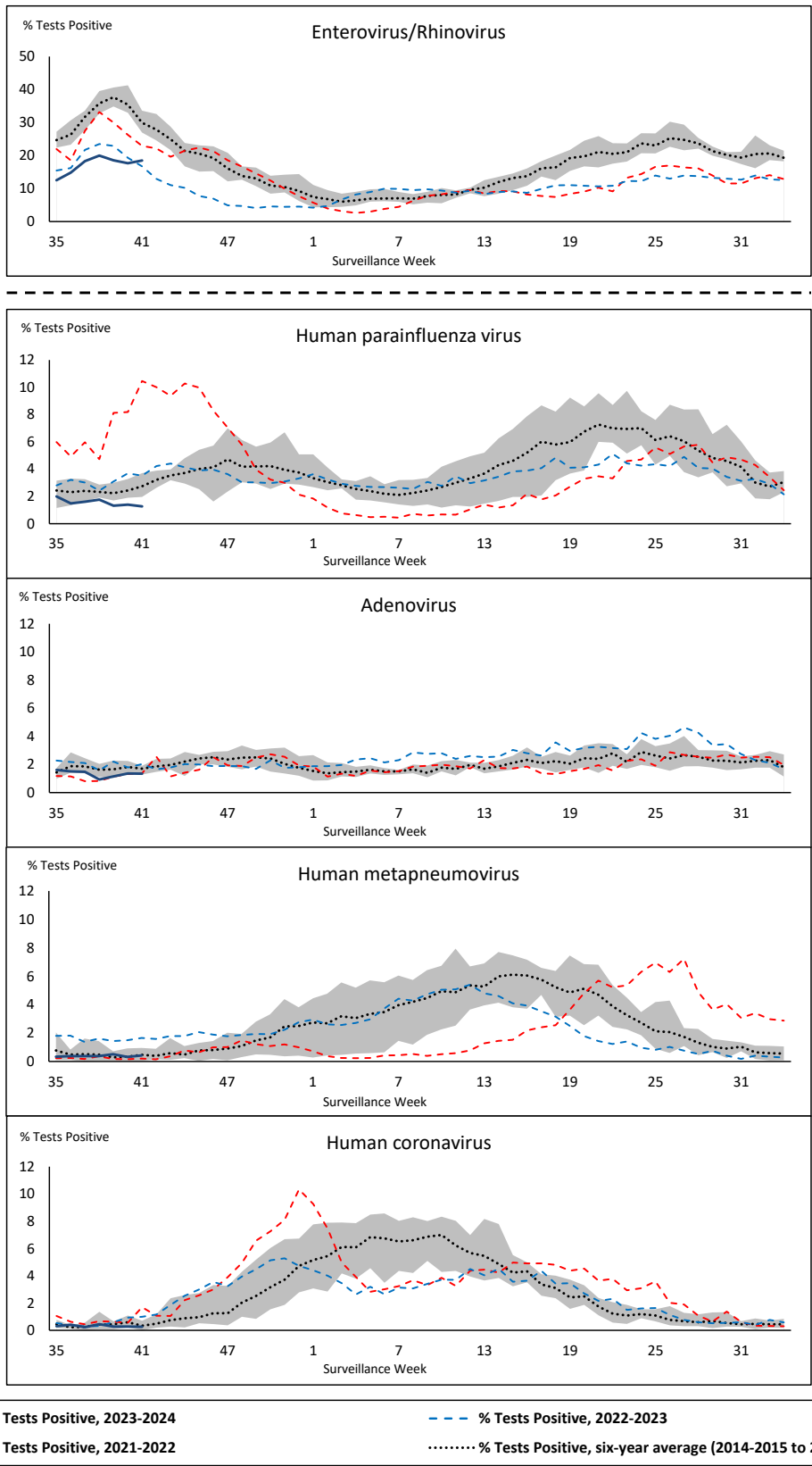
Shaded area represents the maximum and minimum % of respiratory virus tests positive reported by week from seasons 2014-2015 to 2019-2020

Note: Changes to testing practices during the COVID-19 pandemic may cause substantial changes to indicator estimates from previous years. Collection of laboratory testing practice meta-data to understand these changes is ongoing. Interpret trends with caution.

Note: SARS-CoV-2 surveillance was integrated into RVDSS at the beginning of the 2022-2023 season; no prior data is available for historical comparison.

Note: Data from week 11 of the 2019-2020 season onwards are excluded from the historical comparison due to the COVID-19 pandemic.

**Figure 2: Positive tests (%) of other respiratory viruses reported by participating laboratories in Canada by surveillance week compared to average and range from 2014-2015 to 2019-2020 season**



Shaded area represents the maximum and minimum % of respiratory virus tests positive reported by week from seasons 2014-2015 to 2019-2020

Note: Changes to testing practices during the COVID-19 pandemic may cause substantial changes to indicator estimates from previous years. Collection of laboratory testing practice meta-data to understand these changes is ongoing. Interpret trends with caution.

Note: Data from week 11 of the 2019-2020 season onwards are excluded from the historical comparison due to the COVID-19 pandemic.

Note: % Tests Positive scale changes across the dashed line

**Table 1: Respiratory virus detections for the week ending October 14, 2023 (surveillance week 2023-41)**

Reporting Laboratory	SARS-CoV-2 Tested	SARS-CoV-2 Positive	Flu Tested	A(H1)pdm09 Positive	A(H3) Positive	A(UnS) Positive	Total Flu A Positive	Total Flu B Positive	RSV Tested	RSV Positive	HPIV Tested	HPIV 1 Positive	HPIV 2 Positive	HPIV 3 Positive	HPIV 4 Positive	Other HPIV Positive	ADV Tested	ADV Positive	HMPV Tested	HMPV Positive	EV/RV Tested	EV/RV Positive	HCoV Tested	HCoV Positive	
Newfoundland	599	130	372	0	0	1	1	0	372	4	372	1	1	1	5	0	372	5	372	0	372	68	372	1	
Prince Edward Island	303	45	75	0	0	1	1	0	75	0	11	0	0	0	0	0	11	0	11	0	11	7	11	0	
Nova Scotia	1729	408	687	0	0	6	6	0	687	6	37	0	0	0	0	0	37	2	30	0	37	14	37	0	
New Brunswick	952	160	804	1	0	2	3	0	793	6	71	0	0	0	0	0	71	1	71	0	71	24	71	0	
<b>Atlantic</b>	<b>3583</b>	<b>743</b>	<b>1938</b>	<b>1</b>	<b>0</b>	<b>10</b>	<b>11</b>	<b>0</b>	<b>1927</b>	<b>16</b>	<b>491</b>	<b>1</b>	<b>1</b>	<b>1</b>	<b>5</b>	<b>0</b>	<b>491</b>	<b>8</b>	<b>484</b>	<b>0</b>	<b>491</b>	<b>113</b>	<b>491</b>	<b>1</b>	
Région Nord-Est	1663	298	1211	0	0	0	0	0	257	7	47	1	0	0	1	0	47	5	46	0	N.C.	N.C.	47	0	
Québec-Chaudière-Appalaches	2290	401	608	0	0	2	2	0	608	18	261	1	0	0	0	0	278	12	261	2	N.C.	N.C.	261	1	
Centre-du-Québec	2130	428	451	0	0	2	2	1	450	21	25	0	0	1	0	0	25	2	25	0	N.C.	N.C.	25	0	
Montréal-Laval	3126	470	1331	0	0	5	5	0	1215	46	734	5	3	2	0	0	734	18	737	9	N.C.	N.C.	734	7	
Ouest du Québec	1983	486	615	0	0	2	2	1	615	25	20	0	0	0	0	0	20	1	20	0	N.C.	N.C.	20	0	
Montérégie	1420	225	763	0	0	0	0	1	752	27	5	0	0	0	1	0	5	0	5	0	N.C.	N.C.	5	0	
<b>Province of Québec</b>	<b>12612</b>	<b>2308</b>	<b>4979</b>	<b>0</b>	<b>0</b>	<b>11</b>	<b>11</b>	<b>3</b>	<b>3897</b>	<b>144</b>	<b>1092</b>	<b>7</b>	<b>3</b>	<b>3</b>	<b>2</b>	<b>0</b>	<b>1109</b>	<b>38</b>	<b>1094</b>	<b>11</b>	<b>N.C.</b>	<b>N.C.</b>	<b>1092</b>	<b>8</b>	
P.H.O.L. - Ottawa	299	93	199	0	0	0	0	0	199	1	154	0	0	0	0	2	154	0	154	0	154	41	154	0	
EORLA	1344	137	455	0	0	4	4	0	455	32	40	0	0	0	1	0	40	0	40	0	40	12	40	0	
P.H.O.L. - Kingston	271	64	148	0	0	0	0	0	148	0	111	0	0	0	0	2	111	0	111	0	111	29	111	0	
UHN / Mount Sinai Hospital	1012	66	619	0	0	1	1	0	619	2	24	0	0	0	0	0	24	0	24	0	24	2	24	0	
P.H.O.L. - Toronto	505	201	1052	3	3	1	6	0	1052	10	951	0	0	0	0	23	951	6	951	5	951	216	951	3	
Sick Kids Hospital - Toronto	N.R.	N.R.	N.R.	N.R.	N.R.	N.R.	N.R.	N.R.	N.R.	N.R.	N.R.	N.R.	N.R.	N.R.	N.R.	N.R.	N.R.	N.R.	N.R.	N.R.	N.R.	N.R.	N.R.	N.R.	
Shared Hospital Laboratory	1408	179	1408	1	0	0	1	0	1408	39	1408	0	0	0	0	5	1408	9	1408	2	0	0	1408	0	
P.H.O.L. - Sault Ste. Marie	2	2	4	0	0	0	0	0	4	0	4	0	0	0	0	0	4	0	4	0	4	1	4	0	
P.H.O.L. - Timmins	41	6	37	0	0	0	0	0	37	1	34	0	0	0	0	0	34	1	34	0	34	3	34	0	
St. Joseph's - London	924	124	53	0	0	0	0	0	53	5	30	0	0	0	0	2	47	1	47	0	47	8	48	0	
P.H.O.L. - London	406	125	308	0	0	0	0	0	308	4	262	0	0	0	0	6	262	4	262	0	262	35	262	0	
P.H.O.L. - Orillia	13	1	38	0	0	0	0	0	38	0	38	0	0	0	0	1	38	1	38	0	38	11	38	0	
P.H.O.L. - Thunder Bay	51	21	33	0	0	0	0	0	33	0	16	0	0	0	0	1	16	0	16	0	16	2	16	0	
P.H.O.L. - Sudbury	22	12	33	0	0	0	0	0	31	0	16	0	0	0	0	1	16	0	16	0	16	6	16	0	
P.H.O.L. - Hamilton	127	39	146	0	0	0	0	0	146	6	119	0	0	0	0	2	119	2	119	0	119	31	119	0	
P.H.O.L. - Peterborough	87	25	71	0	0	0	0	0	71	10	60	0	0	0	0	2	60	0	60	0	60	11	60	1	
St. Joseph's - Hamilton	1692	176	1455	0	0	6	6	0	1455	35	1455	0	0	4	0	0	1455	9	1455	3	1455	138	0	0	
Sault Area Hospital	136	15	112	0	0	0	0	0	112	0	56	0	0	1	0	0	56	0	56	0	56	7	56	0	
<b>Province of Ontario</b>	<b>8340</b>	<b>1286</b>	<b>6171</b>	<b>4</b>	<b>3</b>	<b>12</b>	<b>18</b>	<b>0</b>	<b>6169</b>	<b>145</b>	<b>4778</b>	<b>0</b>	<b>0</b>	<b>5</b>	<b>1</b>	<b>47</b>	<b>4795</b>	<b>33</b>	<b>4795</b>	<b>10</b>	<b>3387</b>	<b>553</b>	<b>3341</b>	<b>4</b>	
Manitoba	1513	240	1152	0	1	5	6	0	1152	0	72	0	0	0	2	0	72	3	106	0	72	31	106	1	
Saskatchewan	2293	341	918	0	0	5	5	0	887	7	390	0	0	0	1	0	390	5	390	2	390	73	390	1	
Alberta	5590	972	2636	10	3	0	13	1	2357	16	29	1	0	0	0	0	29	0	29	0	28	4	29	1	
<b>Prairies</b>	<b>9396</b>	<b>1553</b>	<b>4706</b>	<b>10</b>	<b>4</b>	<b>10</b>	<b>24</b>	<b>1</b>	<b>4396</b>	<b>23</b>	<b>491</b>	<b>1</b>	<b>0</b>	<b>0</b>	<b>3</b>	<b>0</b>	<b>491</b>	<b>8</b>	<b>525</b>	<b>2</b>	<b>490</b>	<b>108</b>	<b>525</b>	<b>3</b>	
<b>British Columbia</b>	<b>4045</b>	<b>765</b>	<b>3803</b>	<b>11</b>	<b>0</b>	<b>1</b>	<b>28</b>	<b>1</b>	<b>3803</b>	<b>36</b>	<b>734</b>	<b>5</b>	<b>2</b>	<b>3</b>	<b>6</b>	<b>0</b>	<b>734</b>	<b>16</b>	<b>734</b>	<b>10</b>	<b>693</b>	<b>160</b>	<b>693</b>	<b>0</b>	
Yukon	46	6	26	0	0	0	0	0	26	0	N.C.	N.C.	N.C.	N.C.	N.C.	N.C.	N.C.	N.C.	N.C.	N.C.	N.C.	N.C.	N.C.	N.C.	
Northwest Territories	36	8	27	0	0	0	0	0	27	0	N.C.	N.C.	N.C.	N.C.	N.C.	N.C.	N.C.	N.C.	N.C.	N.C.	N.C.	27	8	N.C.	N.C.
Nunavut	95	13	61	0	0	0	0	0	61	0	N.C.	N.C.	N.C.	N.C.	N.C.	N.C.	N.C.	N.C.	N.C.	N.C.	N.C.	N.C.	N.C.	N.C.	
<b>Territories</b>	<b>177</b>	<b>27</b>	<b>114</b>	<b>0</b>	<b>0</b>	<b>0</b>	<b>0</b>	<b>0</b>	<b>114</b>	<b>0</b>	<b>N.C.</b>	<b>N.C.</b>	<b>N.C.</b>	<b>N.C.</b>	<b>N.C.</b>	<b>N.C.</b>	<b>N.C.</b>	<b>N.C.</b>	<b>N.C.</b>	<b>N.C.</b>	<b>N.C.</b>	<b>27</b>	<b>8</b>	<b>N.C.</b>	<b>N.C.</b>
<b>CANADA</b>	<b>38153</b>	<b>6682</b>	<b>21711</b>	<b>26</b>	<b>7</b>	<b>44</b>	<b>92</b>	<b>5</b>	<b>20306</b>	<b>364</b>	<b>7586</b>	<b>14</b>	<b>6</b>	<b>12</b>	<b>17</b>	<b>47</b>	<b>7620</b>	<b>103</b>	<b>7632</b>	<b>33</b>	<b>5088</b>	<b>942</b>	<b>6142</b>	<b>16</b>	

The data in the RVDSS report represent surveillance data available at the time of writing. Data missing from the current week are denoted by N.R. Data not collected by reporting lab denoted by N.C.

Some specimens from Yukon (YT) are sent to reference laboratories in British Columbia and reported results reflect specimens identified as originating from YT.

Results from British Columbia comprise of specimens from the following sites: Children's and Women's Hospital Laboratory, Fraser Health Medical Microbiology Laboratory, Island Health, Providence Health Care, Vancouver Coastal Health sites, Victoria General Hospital, BCCDC Public Health Laboratory, Interior Health Authority sites and Northern Health Authority sites.

Due to different testing protocols of laboratories across Canada, influenza A subtype detection counts may not be included in total influenza A detection counts. Total influenza A and B positive counts are used to calculate percentage of tests positive.

Delays in the reporting of data may cause data to change retrospectively.

**Table 2: Cumulative respiratory virus detections from August 27, 2023 to October 14, 2023 (surveillance weeks 2023-35 to 2023-41)**

Reporting Laboratory	SARS-CoV-2 Tested	SARS-CoV-2 Positive	Flu Tested	A(H1)pdm09 Positive	A(H3) Positive	A(UnS) Positive	Total Flu A Positive	Total Flu B Positive	RSV Tested	RSV Positive	HPIV Tested	HPIV 1 Positive	HPIV 2 Positive	HPIV 3 Positive	HPIV 4 Positive	Other HPIV Positive	ADV Tested	ADV Positive	HMPV Tested	HMPV Positive	EV/RV Tested	EV/RV Positive	HCoV Tested	HCoV Positive	
<b>Newfoundland</b>	3465	615	2186	0	0	1	1	0	2186	14	2186	2	5	3	26	0	2186	28	2186	5	2186	477	2186	5	
Prince Edward Island	1228	143	153	0	0	1	1	0	153	0	55	0	0	0	2	0	54	4	44	0	54	29	54	0	
Nova Scotia	9672	2537	3646	0	0	13	13	0	3646	28	266	11	1	1	2	0	266	11	259	1	266	89	266	0	
New Brunswick	5686	840	3766	1	0	5	6	1	3693	17	400	6	1	0	2	0	400	7	400	0	400	112	400	1	
<b>Atlantic</b>	<b>20051</b>	<b>4135</b>	<b>9751</b>	<b>1</b>	<b>0</b>	<b>20</b>	<b>21</b>	<b>1</b>	<b>9678</b>	<b>59</b>	<b>2907</b>	<b>19</b>	<b>7</b>	<b>4</b>	<b>32</b>	<b>0</b>	<b>2906</b>	<b>50</b>	<b>2889</b>	<b>6</b>	<b>2906</b>	<b>707</b>	<b>2906</b>	<b>6</b>	
Région Nord-Est	11144	2045	7596	0	0	8	8	1	1682	34	408	6	3	2	13	0	408	12	406	6	N.C.	N.C.	408	0	
Québec-Chaudière-Appalaches	15624	2847	3632	0	0	14	14	2	3632	96	1653	8	1	1	5	0	1744	76	1653	19	N.C.	N.C.	1653	2	
Centre-du-Québec	14986	3151	2441	0	0	4	4	3	2435	67	196	6	2	2	3	0	196	7	196	3	N.C.	N.C.	196	1	
Montréal-Laval	23268	3860	8906	0	0	37	37	3	8063	184	4847	53	17	15	15	0	4847	74	4856	43	N.C.	N.C.	4847	35	
Ouest du Québec	12699	3215	3294	1	0	14	15	4	3289	82	132	5	3	1	4	0	132	7	132	3	N.C.	N.C.	132	1	
Montérégie	10706	2127	5481	0	0	10	10	5	5040	99	40	1	0	0	1	0	40	0	40	0	N.C.	N.C.	40	0	
<b>Province of Québec</b>	<b>88427</b>	<b>17245</b>	<b>31350</b>	<b>1</b>	<b>0</b>	<b>87</b>	<b>88</b>	<b>18</b>	<b>24141</b>	<b>562</b>	<b>7276</b>	<b>79</b>	<b>26</b>	<b>21</b>	<b>41</b>	<b>0</b>	<b>7367</b>	<b>176</b>	<b>7283</b>	<b>74</b>	<b>N.C.</b>	<b>N.C.</b>	<b>7276</b>	<b>39</b>	
P.H.O.L. - Ottawa	2807	1021	1524	1	0	1	2	0	1524	8	892	0	0	0	0	8	892	0	892	0	892	179	892	0	
EORLA	8204	870	2788	0	0	7	7	1	2788	136	205	0	3	1	1	0	180	1	205	0	205	55	205	0	
P.H.O.L. - Kingston	1995	538	820	0	0	0	0	0	820	1	634	0	0	0	0	19	634	1	634	0	634	151	634	1	
UHN / Mount Sinai Hospital	6824	513	3734	0	0	4	4	4	3734	11	151	0	0	2	0	0	151	1	151	0	151	11	151	0	
P.H.O.L. - Toronto	4075	1311	6090	44	19	2	45	0	6090	37	5541	0	0	0	0	171	5542	51	5538	21	5541	1288	5538	18	
Sick Kids Hospital - Toronto	638	49	524	9	6	5	20	1	524	26	524	3	1	2	3	0	524	10	524	4	524	25	524	4	
Shared Hospital Laboratory	7666	790	7666	8	12	0	20	2	7667	148	7665	0	0	0	0	67	7664	58	7674	8	6266	504	7674	12	
P.H.O.L. - Sault Ste. Marie	92	65	100	0	0	0	0	0	100	0	51	0	0	0	0	0	51	0	51	0	51	12	51	0	
P.H.O.L. - Timmins	178	32	143	0	0	0	0	0	143	2	128	0	0	0	0	8	128	2	128	0	128	18	128	0	
St. Joseph's - London	5239	696	382	0	0	0	0	0	382	8	358	0	0	0	0	6	375	3	375	0	375	76	376	1	
P.H.O.L. - London	3245	1044	2175	0	0	0	0	1	2175	13	1736	0	0	0	0	42	1736	10	1736	0	1736	340	1736	0	
P.H.O.L. - Orillia	124	13	245	1	1	0	2	0	244	3	232	0	0	0	0	5	232	4	232	2	232	63	232	0	
P.H.O.L. - Thunder Bay	428	162	227	0	0	0	0	0	227	0	167	0	0	0	0	5	167	1	167	1	167	32	167	1	
P.H.O.L. - Sudbury	115	41	130	0	0	0	0	0	128	0	94	0	0	0	0	1	95	1	94	0	94	24	94	0	
P.H.O.L. - Hamilton	1859	522	1404	1	1	0	1	0	1404	15	977	0	0	0	0	34	977	11	977	7	977	263	977	1	
P.H.O.L. - Peterborough	519	171	423	0	0	0	0	1	423	25	376	0	0	0	0	9	376	4	376	1	376	116	376	2	
St. Joseph's - Hamilton	11292	1228	9486	0	0	17	17	8	9486	131	9486	0	0	24	0	0	9486	57	9486	25	9486	967	0	0	
Sault Area Hospital	700	84	528	0	1	0	1	0	521	2	437	0	0	2	0	0	437	5	437	0	437	91	447	0	
<b>Province of Ontario</b>	<b>56000</b>	<b>9150</b>	<b>38389</b>	<b>64</b>	<b>40</b>	<b>36</b>	<b>119</b>	<b>18</b>	<b>38380</b>	<b>566</b>	<b>29654</b>	<b>3</b>	<b>4</b>	<b>31</b>	<b>4</b>	<b>375</b>	<b>29647</b>	<b>220</b>	<b>29677</b>	<b>69</b>	<b>28272</b>	<b>4215</b>	<b>20202</b>	<b>40</b>	
Manitoba	10081	1707	7809	0	1	15	16	5	7809	18	434	0	4	4	13	0	434	27	722	0	434	200	722	3	
Saskatchewan	11409	1303	5034	0	0	16	16	3	4870	26	2087	3	4	0	5	0	2087	61	2066	15	2037	466	2087	7	
Alberta	31774	4584	20076	115	21	6	142	10	18605	69	5160	13	15	5	3	0	5160	50	5144	0	5072	932	5160	24	
<b>Prairies</b>	<b>53264</b>	<b>7594</b>	<b>32919</b>	<b>115</b>	<b>22</b>	<b>37</b>	<b>174</b>	<b>18</b>	<b>31284</b>	<b>113</b>	<b>7681</b>	<b>16</b>	<b>23</b>	<b>9</b>	<b>21</b>	<b>0</b>	<b>7681</b>	<b>138</b>	<b>7932</b>	<b>15</b>	<b>7543</b>	<b>1598</b>	<b>7969</b>	<b>34</b>	
<b>British Columbia</b>	<b>23925</b>	<b>4881</b>	<b>21185</b>	<b>195</b>	<b>37</b>	<b>13</b>	<b>301</b>	<b>8</b>	<b>21168</b>	<b>122</b>	<b>4944</b>	<b>20</b>	<b>15</b>	<b>13</b>	<b>42</b>	<b>0</b>	<b>4944</b>	<b>109</b>	<b>4944</b>	<b>43</b>	<b>4707</b>	<b>1020</b>	<b>4684</b>	<b>16</b>	
Yukon	429	56	226	0	1	0	2	0	226	0	N.C.	N.C.	N.C.	N.C.	N.C.	N.C.	N.C.	N.C.	N.C.	N.C.	N.C.	N.C.	N.C.	N.C.	
Northwest Territories	123	18	92	0	0	0	0	0	92	0	N.C.	N.C.	N.C.	N.C.	N.C.	N.C.	N.C.	N.C.	N.C.	N.C.	N.C.	92	32	N.C.	N.C.
Nunavut	581	76	402	0	0	0	0	0	402	1	N.C.	N.C.	N.C.	N.C.	N.C.	N.C.	N.C.	N.C.	N.C.	N.C.	N.C.	N.C.	N.C.	N.C.	
<b>Territories</b>	<b>1133</b>	<b>150</b>	<b>720</b>	<b>0</b>	<b>1</b>	<b>0</b>	<b>2</b>	<b>0</b>	<b>720</b>	<b>1</b>	<b>N.C.</b>	<b>N.C.</b>	<b>N.C.</b>	<b>N.C.</b>	<b>N.C.</b>	<b>N.C.</b>	<b>N.C.</b>	<b>N.C.</b>	<b>N.C.</b>	<b>N.C.</b>	<b>92</b>	<b>32</b>	<b>N.C.</b>	<b>N.C.</b>	
<b>CANADA</b>	<b>242800</b>	<b>43155</b>	<b>134314</b>	<b>376</b>	<b>100</b>	<b>193</b>	<b>705</b>	<b>63</b>	<b>125371</b>	<b>1423</b>	<b>52462</b>	<b>137</b>	<b>75</b>	<b>78</b>	<b>140</b>	<b>375</b>	<b>52545</b>	<b>693</b>	<b>52725</b>	<b>207</b>	<b>43520</b>	<b>7572</b>	<b>43037</b>	<b>135</b>	

The data in the RVDSS report represent surveillance data available at the time of writing. Data not collected by reporting lab denoted by N.C.

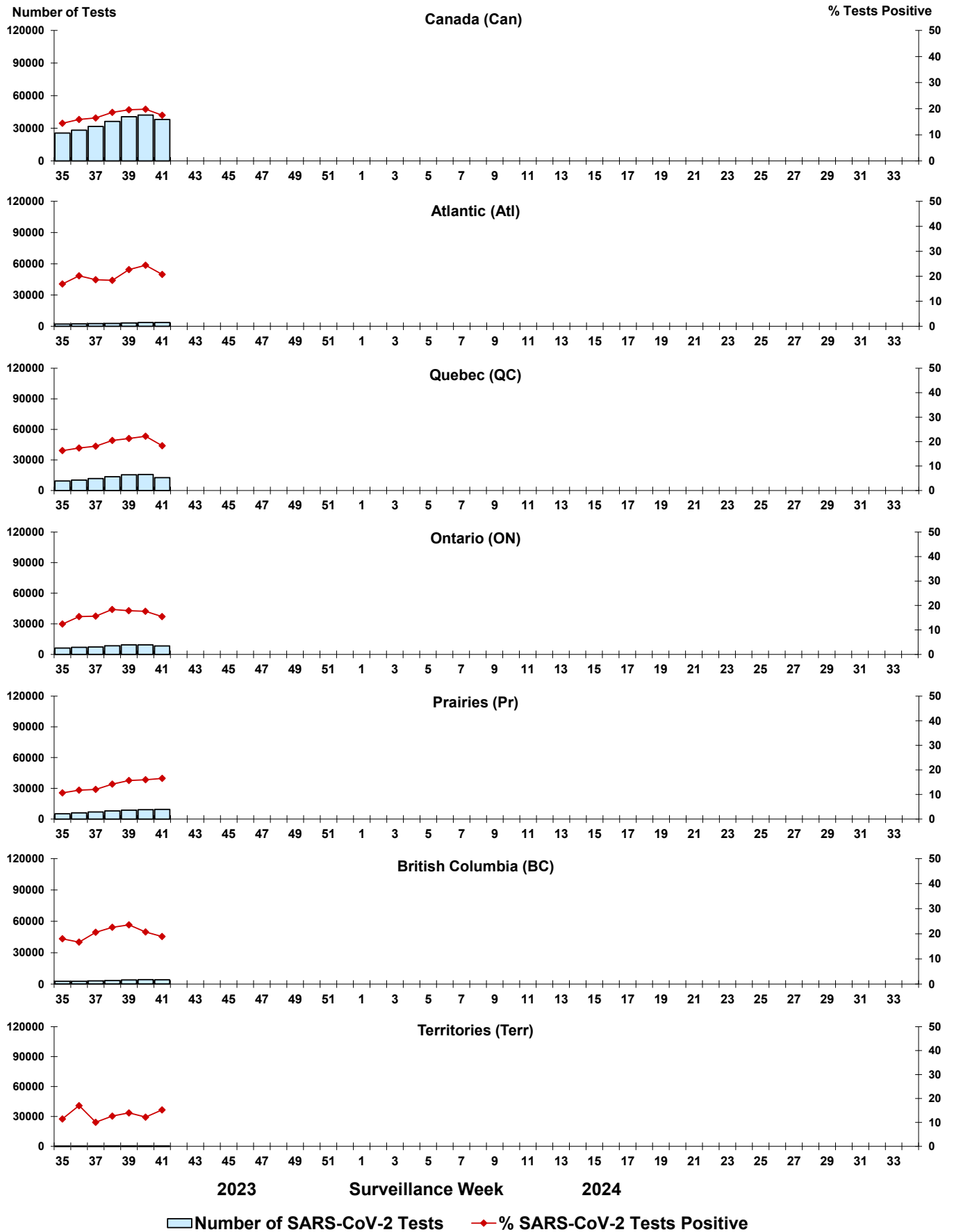
Some specimens from Yukon (YT) are sent to reference laboratories in British Columbia and reported results reflect specimens identified as originating from YT.

Results from British Columbia comprise of specimens from the following sites: Children's and Women's Hospital Laboratory, Fraser Health Medical Microbiology Laboratory, Island Health, Providence Health Care, Vancouver Coastal Health sites, Victoria General Hospital, BCCDC Public Health Laboratory, Interior Health Authority sites and Northern Health Authority sites.

Due to different testing protocols of laboratories across Canada, influenza A subtype detection counts may not be included in total influenza A detection counts. Total influenza A and B positive counts are used to calculate percentage of tests positive.

Delays in the reporting of data may cause data to change retrospectively. Due to these delays, the sum of weekly report totals do not add up to cumulative totals.

**Figure 3: Positive severe acute respiratory syndrome coronavirus 2 (SARS-CoV-2) tests (%) in Canada by region by surveillance week**



Note: Differences in positivity between jurisdictions can reflect differences in testing practices. Please interpret with caution.

Figure 4: Positive Influenza (Flu) tests (%) in Canada by region by surveillance week

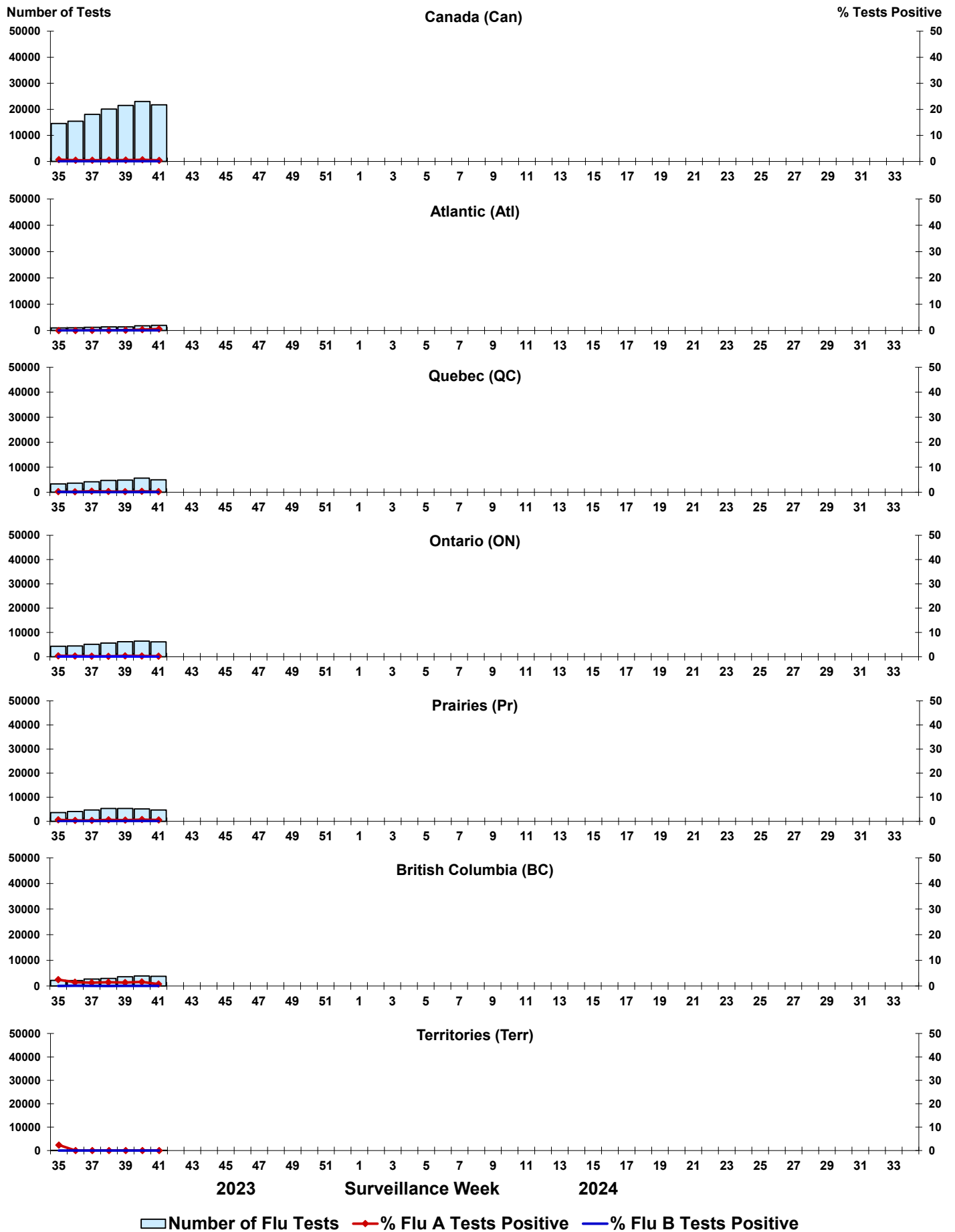


Figure 5: Positive Respiratory syncytial virus (RSV) tests (%) in Canada by region by surveillance week

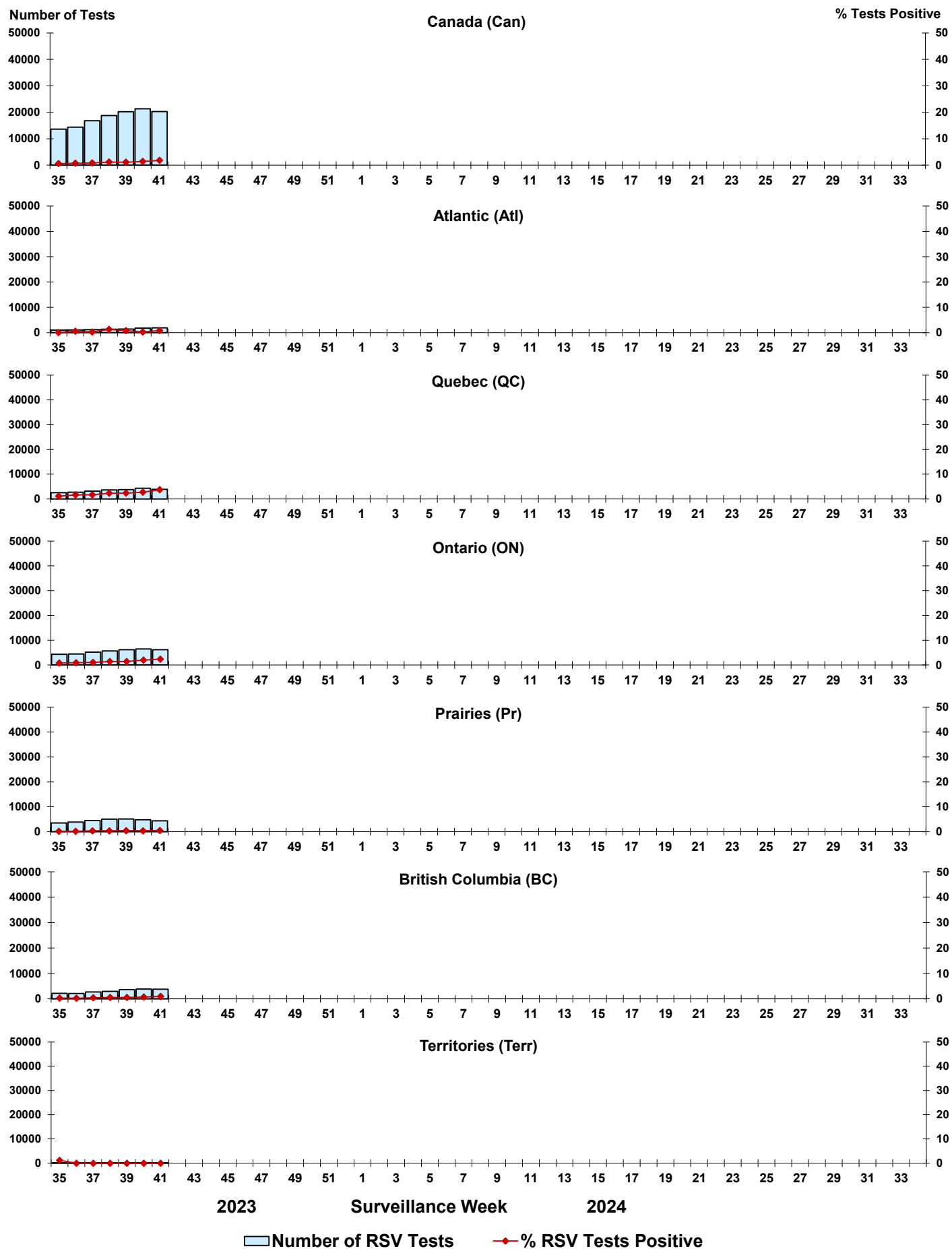




Figure 6: Positive Human parainfluenza virus (HPIV) tests (%) in Canada by region by surveillance week

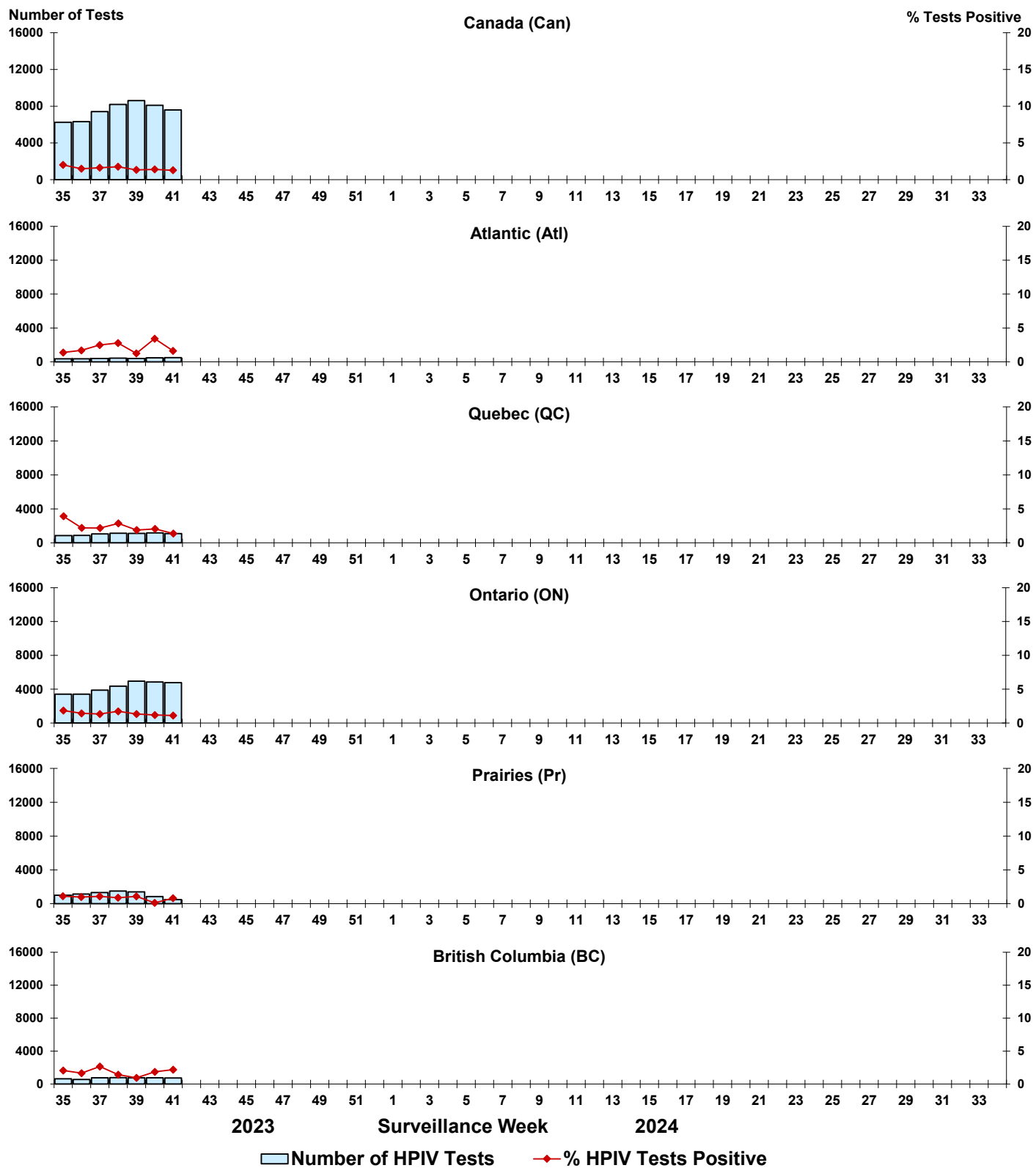


Figure 7: Positive Adenovirus (ADV) tests (%) in Canada by region by surveillance week

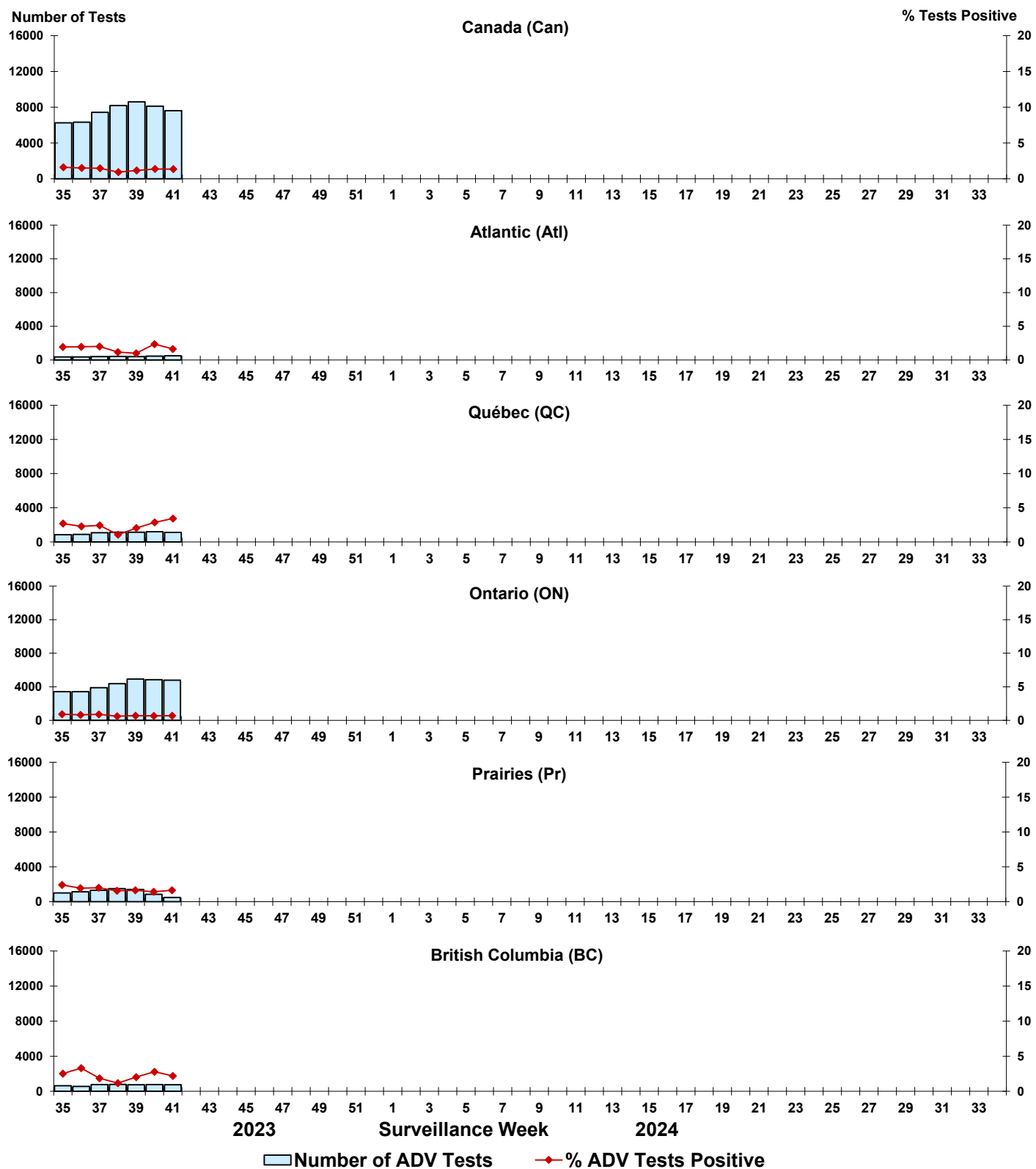


Figure 8: Positive Human metapneumovirus (HMPV) tests (%) in Canada by region by surveillance week

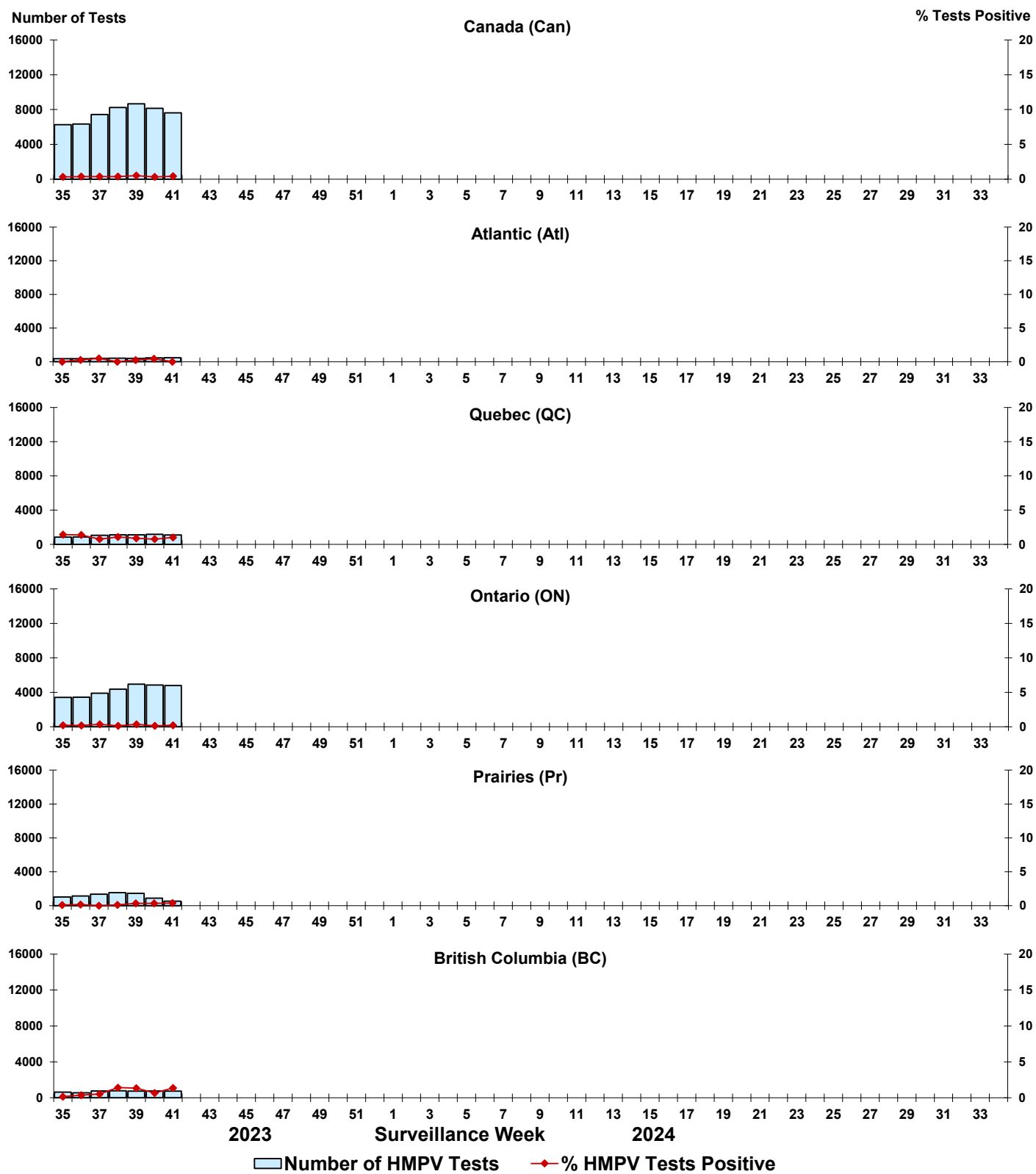


Figure 9: Positive Enterovirus/Rhinovirus (EV/RV) tests (%) in Canada by region by surveillance week

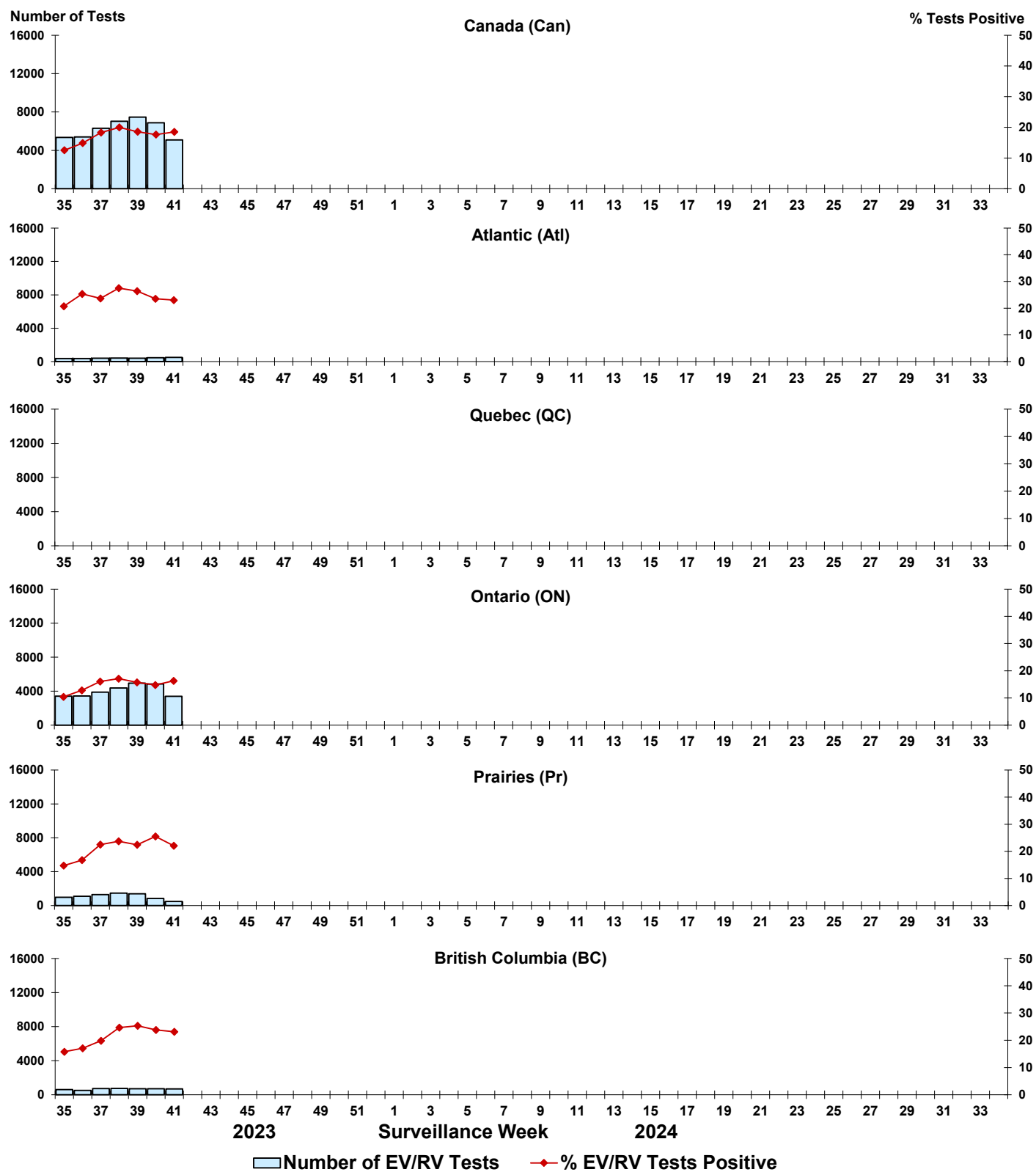


Figure 10: Positive Human coronavirus (HCoV) tests (%) in Canada by region by surveillance week

