

Respiratory Virus Detections in Canada

Respiratory Virus Report, Week 22 - ending June 2, 2018

The Respiratory Virus Detection Surveillance System collects data from select laboratories across Canada on the number of tests performed and the number of tests positive for influenza and other respiratory viruses. Data are reported on a weekly basis year-round to the Centre for Immunization and Respiratory Infectious Diseases (CIRID), Public Health Agency of Canada. These data are also summarized in the weekly FluWatch report.

Table 1: Respiratory Virus Detections/Isolations for the week ending June 2, 2018 (Reporting Week 201822)

Reporting Laboratory	Flu Tested	A(H1N1)pdm09 Positive	A(H3) Positive	A(UnS) Positive	Total Flu A Positive	Total Flu B Positive	RSV Tested	RSV Positive	PIV Tested	PIV 1 Positive	PIV 2 Positive	PIV 3 Positive	PIV 4 Positive	Other PIV Positive	Adeno Tested	Adeno Positive	hMPV Tested	hMPV Positive	Entero/Rhino Tested	Entero/Rhino Positive	Coron Tested	Coron Positive
Newfoundland	0	0	0	0	0	0	0	0	0	0	0	0	0	0	0	0	0	0	0	0	N.A.	N.A.
Prince Edward Island	5	0	0	0	0	0	6	0	0	0	0	0	0	0	0	0	0	0	0	0	0	0
Nova Scotia	27	0	0	1	1	0	27	0	12	0	0	2	0	0	12	0	12	2	12	4	12	0
New Brunswick	184	1	4	5	10	7	184	8	50	0	0	6	0	0	50	3	50	0	50	8	50	0
Atlantic	216	1	4	6	11	7	217	8	62	0	0	8	0	0	62	3	62	2	62	12	62	0
Région Nord-Est	88	0	0	5	5	2	77	4	0	0	0	0	0	0	0	0	0	0	N.A.	N.A.	0	0
Québec-Chaudière-Appalaches	68	0	0	2	2	0	116	1	70	0	1	5	0	0	76	1	69	1	N.A.	N.A.	69	0
Centre-du-Québec	51	0	0	0	0	0	47	0	0	0	0	0	0	0	0	0	0	0	N.A.	N.A.	0	0
Montréal-Laval	523	0	0	3	3	2	524	9	374	0	0	19	3	0	374	28	332	13	N.A.	N.A.	332	2
Ouest du Québec	51	0	0	1	1	1	41	1	0	0	0	0	0	0	0	0	0	0	N.A.	N.A.	0	0
Montérégie	66	0	0	1	1	0	66	2	0	0	0	0	0	0	0	0	0	0	N.A.	N.A.	0	0
Province of Québec	847	0	0	12	12	5	871	17	444	0	1	24	3	0	450	29	401	14	N.A.	N.A.	401	2
Ottawa P.H.L.	5	0	0	0	0	0	1	0	1	0	0	0	0	0	1	0	1	0	0	0	0	0
CHEO - Ottawa	0	0	0	0	0	0	0	0	0	0	0	0	0	0	0	0	0	0	0	0	0	0
Kingston P.H.L.	5	0	0	0	0	0	0	0	0	0	0	0	0	0	0	0	0	0	0	0	0	0
UHN / Mount Sinai Hospital	178	0	0	1	1	0	178	1	24	0	0	2	0	0	0	0	24	1	N.A.	N.A.	N.A.	N.A.
P.H.O.L. - Toronto	120	0	0	2	2	0	36	0	36	0	0	1	0	0	36	0	32	0	4	0	0	0
Sick Kids Hospital - Toronto	39	3	0	0	3	0	39	0	39	0	2	4	1	0	39	0	39	3	39	11	39	0
Sunnybrook & Women's College HSC	0	0	0	0	0	0	0	0	0	0	0	0	0	0	0	0	0	0	0	0	0	0
Sault Ste. Marie P.H.L.	5	0	0	0	0	0	1	0	1	0	0	0	0	0	1	0	0	0	1	0	0	0
Timmins P.H.L.	3	0	0	0	0	0	0	0	0	0	0	0	0	0	0	0	0	0	0	0	0	0
St. Joseph's - London	0	0	0	0	0	0	0	0	0	0	0	0	0	0	0	0	0	0	0	0	0	0
London P.H.L.	21	0	0	1	1	0	9	0	9	0	0	0	0	0	9	0	8	0	1	0	0	0
Orillia P.H.L.	2	0	0	0	0	0	0	0	0	0	0	0	0	0	0	0	0	0	0	0	0	0
Thunder Bay P.H.L.	2	0	0	0	0	0	0	0	0	0	0	0	0	0	0	0	0	0	0	0	0	0
Sudbury P.H.L.	9	0	0	0	0	0	1	0	1	0	0	0	0	0	1	0	0	0	1	0	0	0
Hamilton P.H.L.	8	0	0	0	0	0	0	0	0	0	0	0	0	0	0	0	0	0	0	0	0	0
Peterborough P.H.L.	3	0	0	0	0	0	0	0	0	0	0	0	0	0	0	0	0	0	0	0	0	0
Province of Ontario	400	3	0	4	7	0	265	1	111	0	2	7	1	0	87	0	104	4	70	14	63	1
Manitoba	131	0	0	0	0	0	121	2	105	1	0	3	0	0	105	3	44	1	105	14	44	0
Regina	120	0	0	0	0	0	120	6	120	0	2	9	1	0	120	3	120	2	120	50	120	0
Saskatoon	59	0	0	0	0	0	59	2	59	0	0	5	0	0	59	2	59	1	59	15	59	0
Province of Saskatchewan	179	0	0	0	0	0	179	8	179	0	2	14	1	0	179	5	179	3	179	65	179	0
Province of Alberta	359	5	0	1	6	0	324	0	324	0	3	28	4	0	324	10	324	17	324	65	324	4
Prairies	669	5	0	1	6	0	624	10	608	1	5	45	5	0	608	18	547	21	608	144	547	4
British Columbia	155	1	2	0	3	0	155	2	109	0	0	5	0	0	109	1	109	7	87	26	87	0
Yukon	3	0	0	0	0	0	3	0	N.A.	N.A.	N.A.	N.A.	N.A.	N.A.	N.A.	N.A.	N.A.	N.A.	N.A.	N.A.	N.A.	N.A.
Northwest Territories	9	0	0	0	0	0	9	0	9	0	0	0	0	0	9	0	9	2	9	3	9	0
Nunavut	0	0	0	0	0	0	0	0	0	0	0	0	0	0	0	0	0	0	0	0	0	0
Territories	12	0	0	0	0	0	12	0	9	0	0	0	0	0	9	0	9	2	9	3	9	0
CANADA	2299	10	6	23	39	12	2144	38	1343	1	8	89	9	0	1325	51	1232	50	836	199	1169	7

Specimens from Yukon (YT), Northwest Territories (NT) and Nunavut (NU) are sent to reference laboratories in other provinces and reported results reflect specimens identified as originating from YT, NT or NU. Delays in the reporting of data may cause data to change retrospectively.

Table 2: Respiratory Virus Detections/Isolations for the period August 27, 2017 - June 2, 2018 (Reporting Weeks 201735-201822)

Reporting Laboratory	Flu Tested	A(H1N1)pdm09 Positive	A(H3) Positive	A(UnS) Positive	Total Flu A Positive	Total Flu B Positive	RSV Tested	RSV Positive	PIV Tested	PIV 1 Positive	PIV 2 Positive	PIV 3 Positive	PIV 4 Positive	Other PIV Positive	Adeno Tested	Adeno Positive	hMPV Tested	hMPV Positive	Entero/Rhino Tested	Entero/Rhino Positive	Coron Tested	Coron Positive
Newfoundland	4284	0	3	475	478	435	4284	227	4284	98	19	44	0	0	4284	47	4285	229	4284	224	N.A.	N.A.
Prince Edward Island	1295	8	134	4	146	171	1322	176	80	1	0	0	2	0	80	4	80	5	80	14	80	7
Nova Scotia	4089	0	0	561	561	302	4138	534	513	5	1	5	1	0	513	7	513	31	513	78	513	16
New Brunswick	11462	36	249	1427	1712	1269	11030	767	2798	26	38	34	15	0	2798	68	2798	141	2798	349	2798	153
Atlantic	21130	44	386	2467	2897	2177	20774	1704	7675	130	58	83	18	0	7675	126	7676	406	7675	665	3391	176
Région Nord-Est	13644	0	0	1843	1843	1402	11735	868	0	0	0	0	0	0	0	0	0	0	N.A.	N.A.	0	0
Québec-Chaudière-Appalaches	16341	0	0	2621	2621	2076	16083	1350	3214	44	2	27	19	0	3284	114	2747	28	N.A.	N.A.	2669	25
Centre-du-Québec	19645	0	0	2811	2811	2657	15621	1415	0	0	0	0	0	0	0	0	0	0	N.A.	N.A.	0	0
Montréal-Laval	47276	0	0	5077	5077	3811	42014	2645	21667	209	33	261	55	0	21839	750	20970	620	N.A.	N.A.	19234	600
Ouest du Québec	13131	0	0	1885	1885	1535	8637	750	0	0	0	0	0	0	0	0	0	0	N.A.	N.A.	0	0
Montérégie	9212	0	0	1262	1262	865	9070	636	0	0	0	0	0	0	0	0	0	0	N.A.	N.A.	0	0
Province of Québec	119249	0	0	15499	15499	12346	103160	7664	24881	253	35	288	74	0	25123	864	23717	648	N.A.	N.A.	21903	625
Ottawa P.H.L.	949	4	122	57	183	143	519	12	519	6	0	2	0	0	519	4	499	15	38	6	10	1
CHEO - Ottawa	8463	0	0	794	794	567	8463	703	841	13	1	14	9	0	868	28	925	23	867	192	867	47
Kingston P.H.L.	1061	4	103	38	145	93	773	27	773	9	0	3	1	0	773	5	715	17	138	7	22	0
UHN / Mount Sinai Hospital	11927	0	2	625	627	566	11927	402	710	7	2	18	8	0	0	0	669	15	N.A.	N.A.	N.A.	N.A.
P.H.O.L. - Toronto	16229	174	1563	144	1881	1170	12567	268	12568	110	13	93	1	0	12567	117	12178	209	814	48	234	5
Sick Kids Hospital - Toronto	3166	20	59	121	200	177	2518	199	2518	30	7	54	31	0	2518	57	2518	151	2518	608	2518	139
Sunnybrook & Women's College HSC	3007	14	209	3	226	176	3007	75	3007	22	9	21	10	0	3007	1	3007	95	3007	224	3007	100
Sault Ste. Marie P.H.L.	629	1	98	8	107	52	460	10	460	9	0	1	1	0	460	0	448	3	25	3	12	0
Timmins P.H.L.	473	7	84	8	99	36	335	22	335	1	0	0	0	0	335	2	327	2	22	1	2	0
St. Joseph's - London	4551	0	0	416	416	417	4551	373	1414	24	4	12	11	0	1286	33	1231	56	716	150	666	21
London P.H.L.	4781	27	456	113	596	645	3227	192	3227	38	3	31	3	0	3227	17	3134	74	271	21	63	0
Orillia P.H.L.	1543	8	153	65	226	134	1107	53	1107	19	0	5	0	0	1107	9	1088	31	48	4	11	0
Thunder Bay P.H.L.	1157	2	196	22	220	94	825	27	825	12	2	5	0	0	825	6	814	17	15	0	3	0
Sudbury P.H.L.	1195	3	118	7	128	95	950	11	950	10	2	1	0	0	949	6	913	3	56	1	13	0
Hamilton P.H.L.	3469	29	206	97	332	343	2587	132	2586	33	5	23	3	0	2586	27	2512	51	196	21	64	2
Peterborough P.H.L.	1808	6	98	51	155	126	1457	44	1457	21	0	2	0	0	1457	6	1449	34	56	12	44	2
Province of Ontario	64408	299	3467	2569	6335	4834	55273	2550	33297	364	48	285	78	0	32484	318	32427	796	8832	1309	7573	319
Manitoba	11553	21	378	737	1136	637	11309	574	4622	63	15	19	12	0	4622	62	2458	148	4622	460	2458	96
Regina	13655	70	1163	61	1294	1335	13655	858	13655	375	148	98	54	0	13655	225	13655	743	13655	2377	13655	831
Saskatoon	5707	19	0	391	410	348	5707	253	5606	32	5	25	3	0	5707	47	5707	76	5557	449	5707	97
Province of Saskatchewan	19362	89	1163	452	1704	1683	19362	1111	19261	407	153	123	57	0	19362	272	19362	819	19212	2826	19362	928
Province of Alberta	38583	274	3994	1424	5692	3391	31276	0	31276	541	196	357	299	0	31276	531	31276	1966	31276	4468	31276	1430
Prairies	69498	384	5535	2613	8532	5711	61947	1685	55159	1011	364	499	368	0	55260	865	53096	2933	55110	7754	53096	2454
British Columbia	21468	518	1517	445	2480	3021	21287	876	8819	165	54	83	83	0	8819	100	8819	479	6400	1410	6400	398
Yukon	442	7	48	21	76	43	442	46	N.A.	N.A.	N.A.	N.A.	N.A.	N.A.	N.A.	N.A.	N.A.	N.A.	N.A.	N.A.	N.A.	N.A.
Northwest Territories	723	4	126	0	130	56	717	0	717	11	2	1	24	0	717	25	717	50	717	87	717	52
Nunavut	392	6	40	0	46	5	379	8	380	7	4	13	7	0	379	23	377	26	205	55	196	14
Territories	1557	17	214	21	252	104	1538	54	1097	18	6	14	31	0	1096	48	1094	76	922	142	913	66
CANADA	297310	1262	11119	23614	35995	28193	263979	14533	10928	1941	565	1252	652	0	130457	2321	126829	5338	78939	11280	93276	4038

Specimens from YT, NT and NU are sent to reference laboratories in other provinces and reported results reflect specimens identified as originating from YT, NT or NU.

Delays in the reporting of data may cause data to change retrospectively.

Due to reporting delays, the sum of weekly report totals do not add up to cumulative totals.

Figure 1: Number positive laboratory tests for other respiratory viruses by report week, Canada, 2017-18

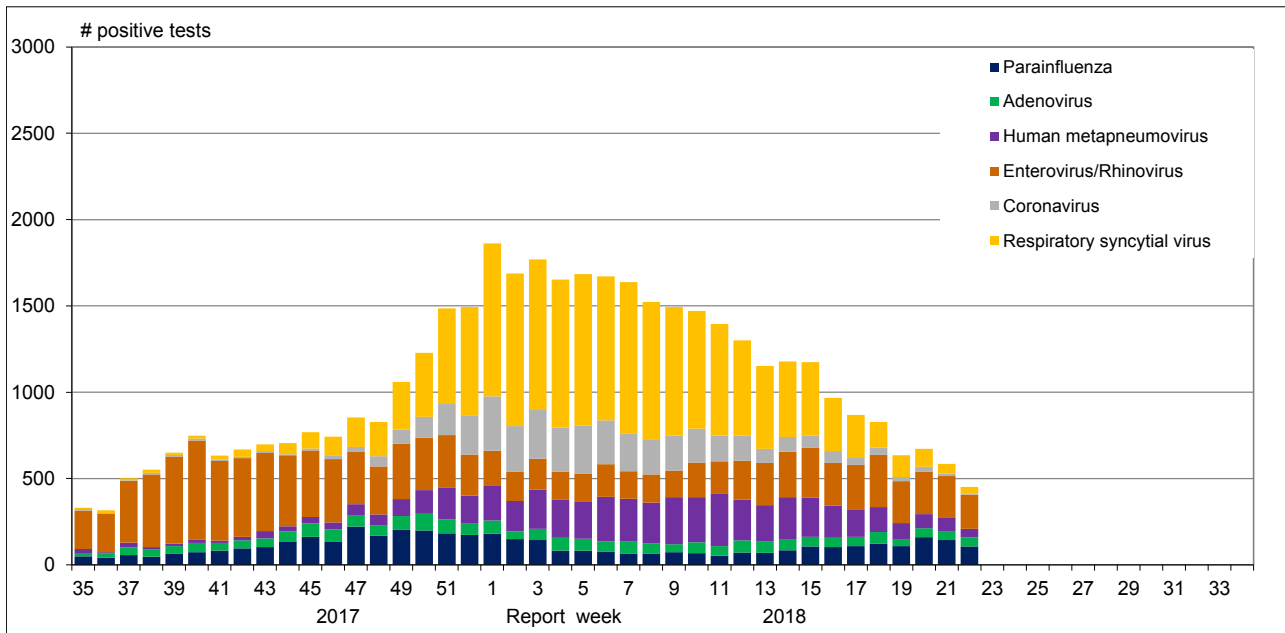


Figure 2: Positive Influenza Tests (%) in Canada by Region by Week of Report

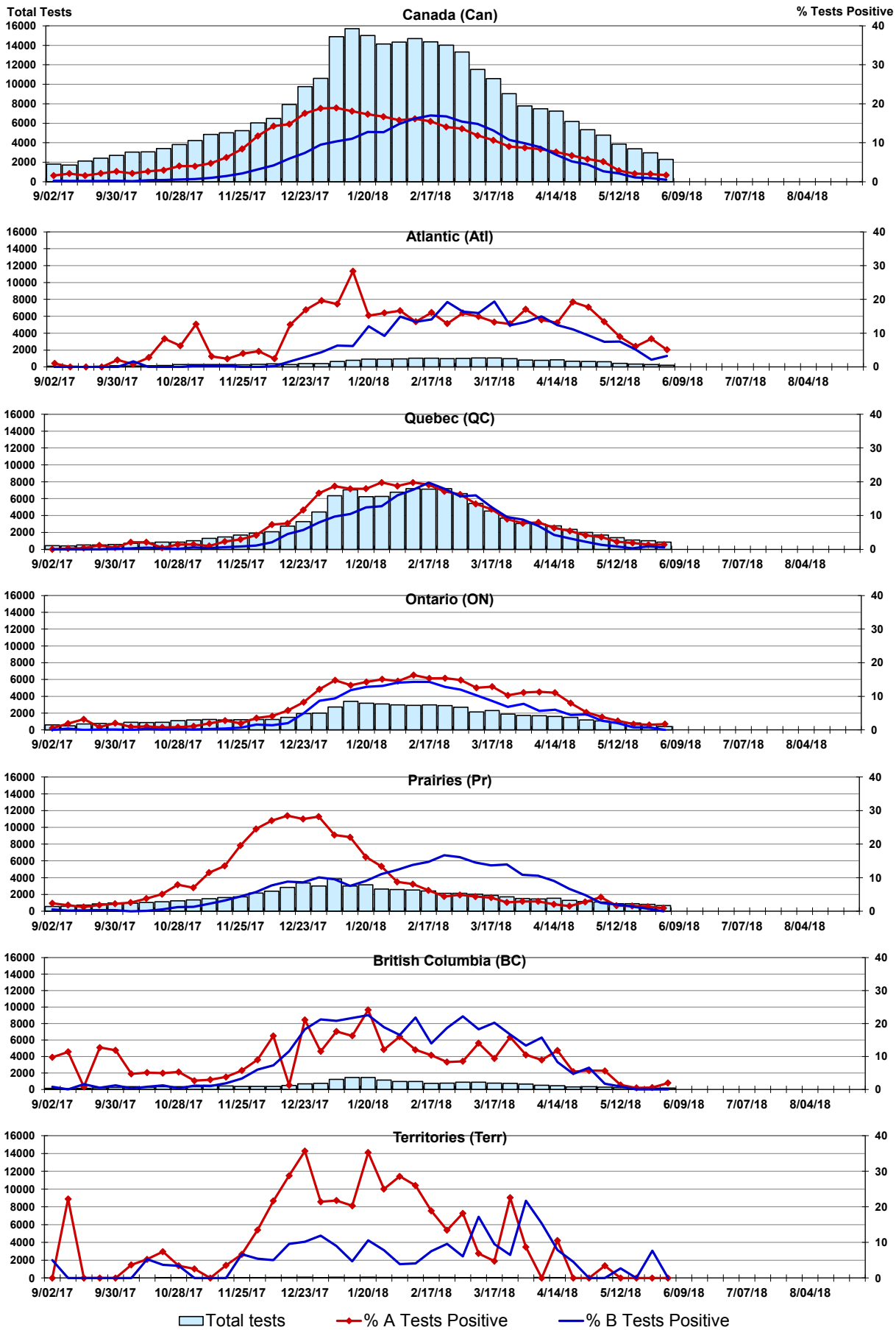


Figure 3: Positive Respiratory syncytial virus (RSV) Tests (%) in Canada by Region by Week of Report

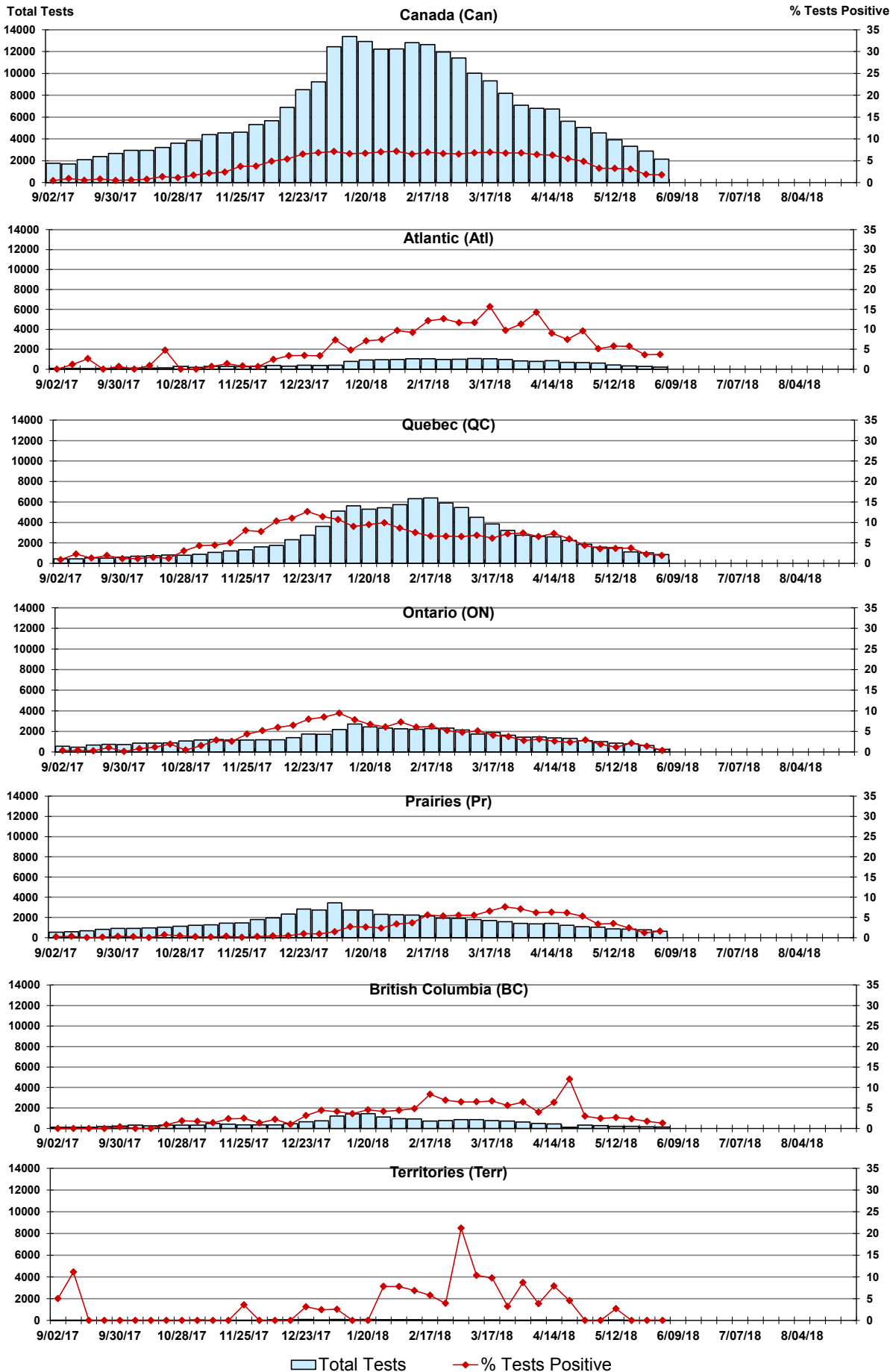


Figure 4: Positive Parainfluenza (PIV) Tests (%) in Canada by Region by Week of Report

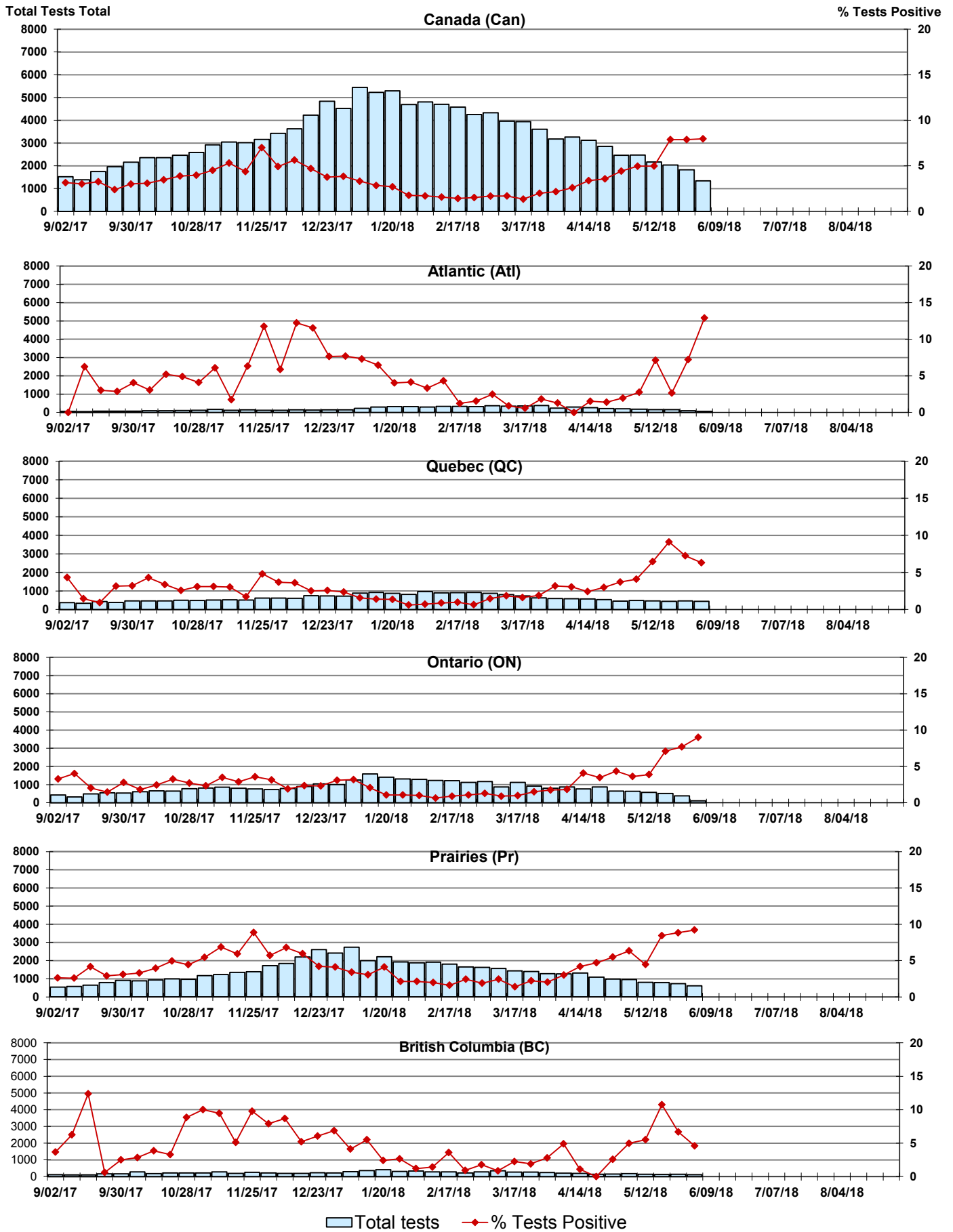


Figure 5: Positive Adenovirus (adeno) Tests (%) in Canada by Region by Week of Report

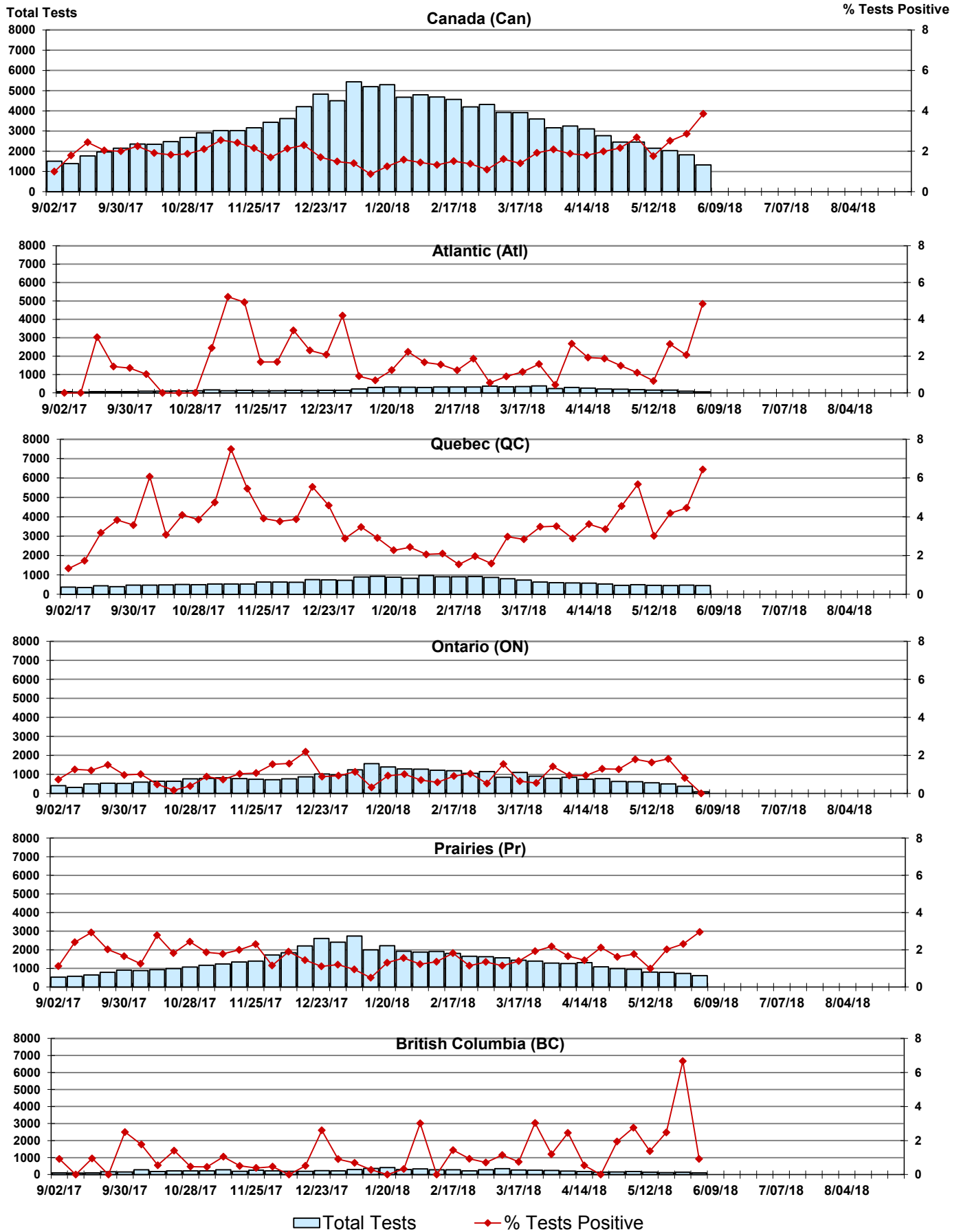


Figure 6: Positive human metapneumovirus (hMPV) Tests (%) in Canada by Region by Week of Report

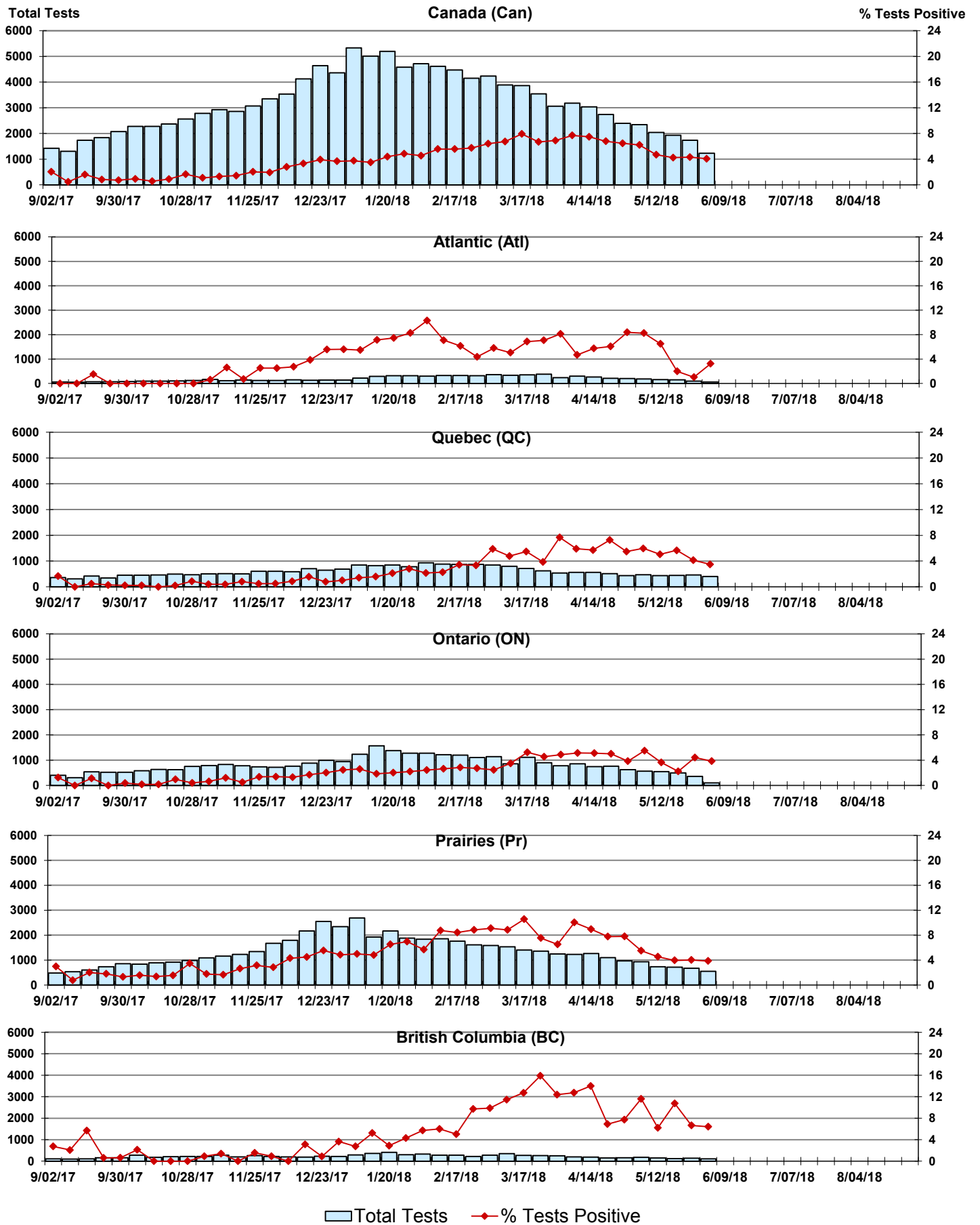


Figure 7: Positive Enterovirus/Rhinovirus (entero/rhino) Tests (%) in Canada by Region by Week of Report

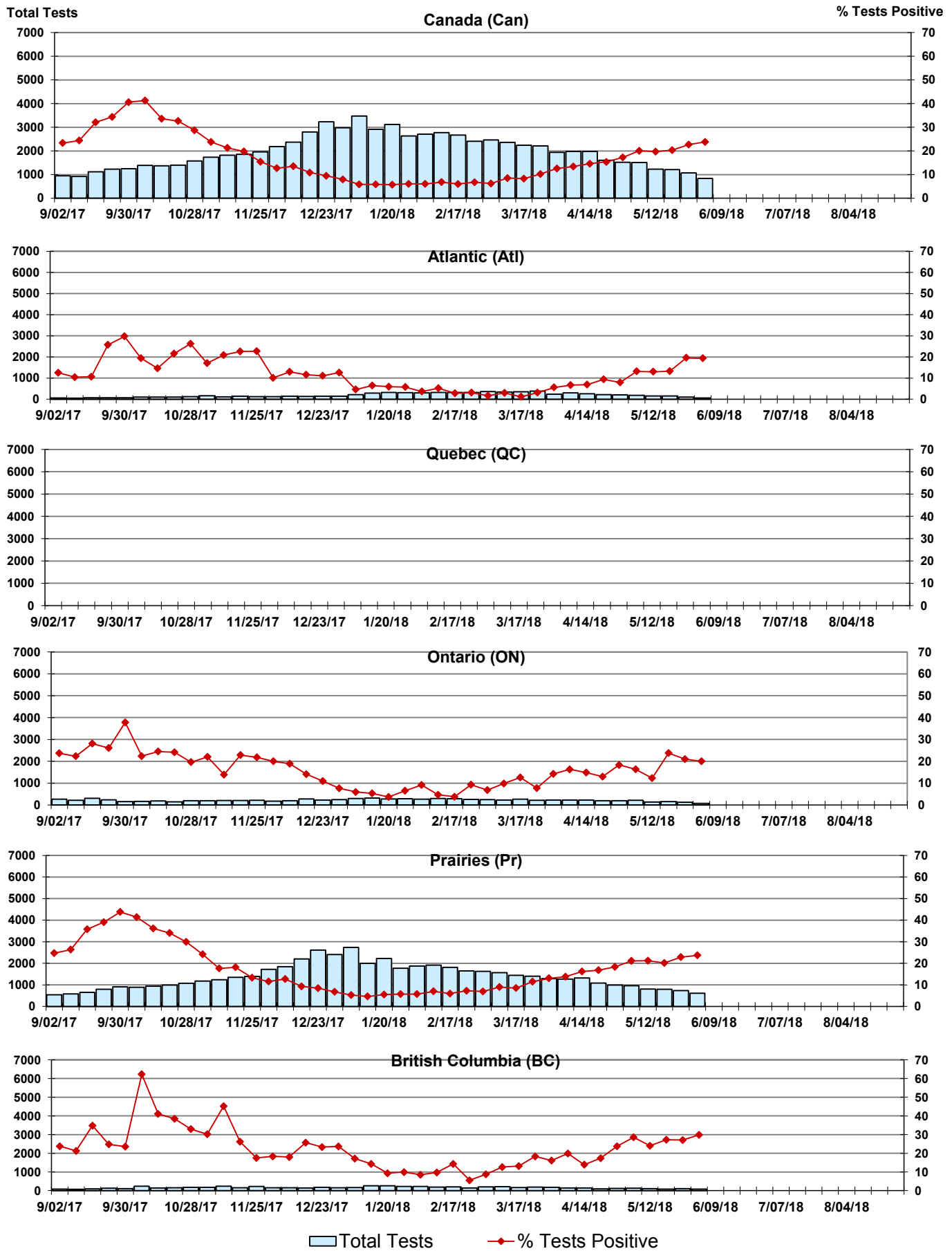
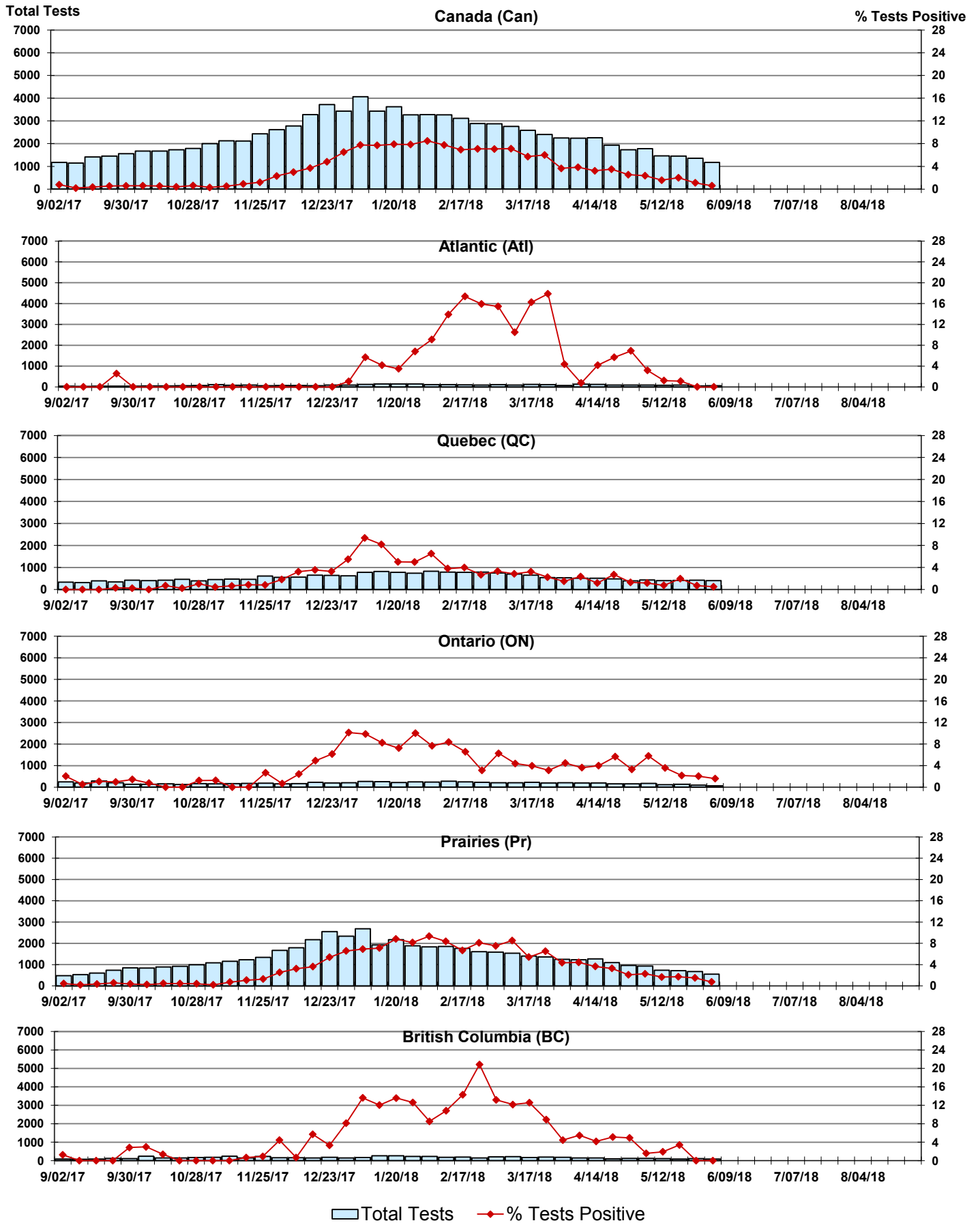


Figure 8: Positive Coronavirus (coron) Tests (%) in Canada by Region by Week of Report



Abbreviations:

A(H1N1)pdm09: Influenza A(H1N1)pdm09

A(H3): Influenza A(H3N2)

A (UnS): Influenza A (Unsubtyped)

Adeno: Adenovirus

CHEO: Children's Hospital of Eastern Ontario

Coron: Coronavirus

Entero: Enterovirus

hMPV: human metapneumovirus

HSC: Health Sciences Centre

N.A.: Not Applicable

P.H.L.: Public Health Laboratory

P.H.O.L.: Public Health Ontario Laboratory

PIV: Parainfluenza

Rhino: Rhinovirus

RSV: Respiratory syncytial virus

UHN: University Health Network

Notes:

Specimens from Yukon (YT), Northwest Territories (NT) and Nunavut (NU) are sent to reference laboratories in other provinces. Results reported for the Territories reflect the number of specimens that are identified as originating from YT, NT or NU.

Delays in the reporting of data may cause data to change retrospectively.

Due to reporting delays, the sum of weekly report totals do not add up to cumulative totals.