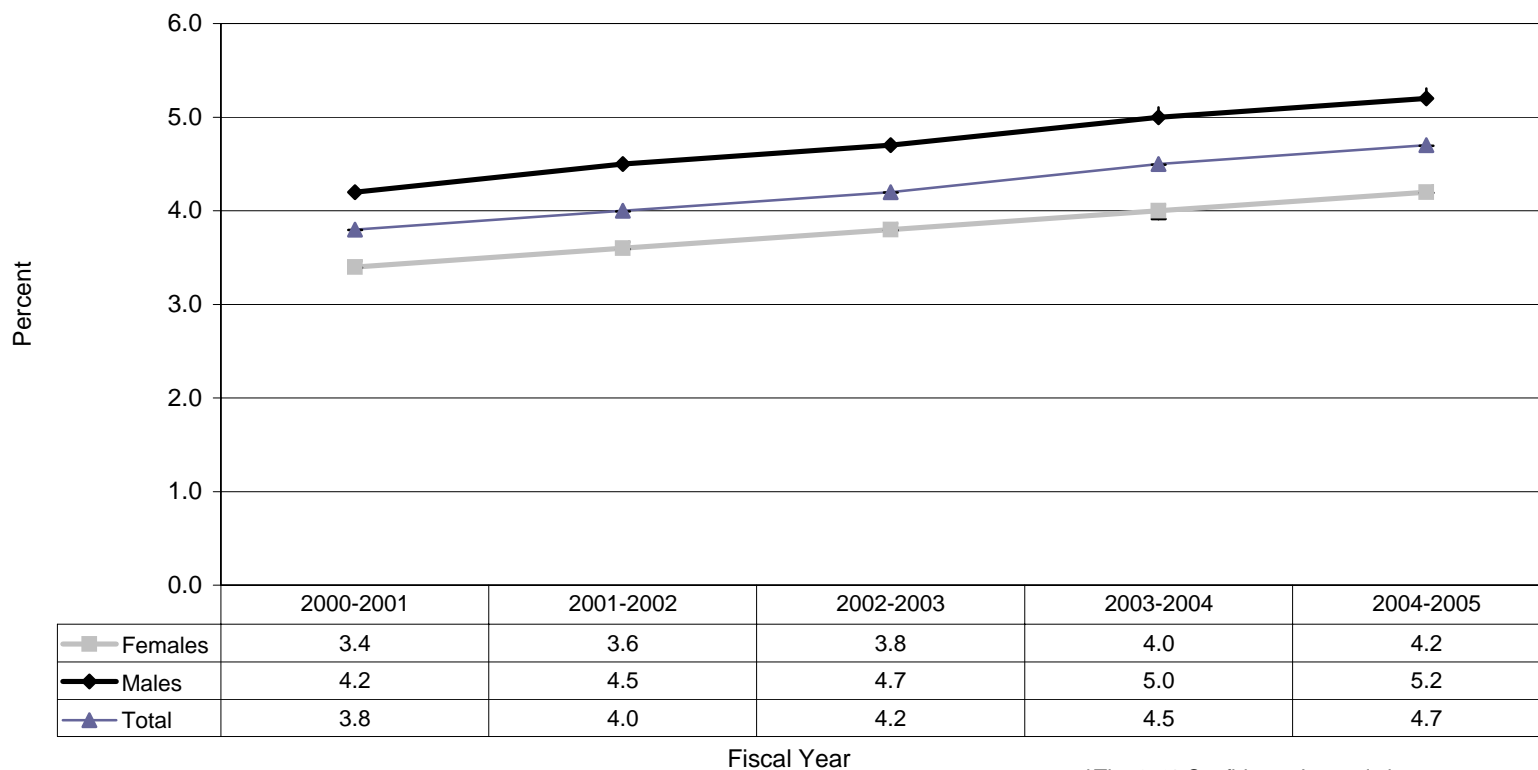


Figure 3. Age-Standardized Prevalence Rates* of Diagnosed Diabetes Among People Aged 1 Year and Older, Canada, 2000-2001 to 2004-2005



Source: Public Health Agency of Canada, using NDSS data files contributed by all provinces and territories, as of October 31, 2007

*Age-standardized to 1991 Canadian population

‡The 95% Confidence Interval shows an estimated range of values which is likely to include the true prevalence rate 19 times out of 20.