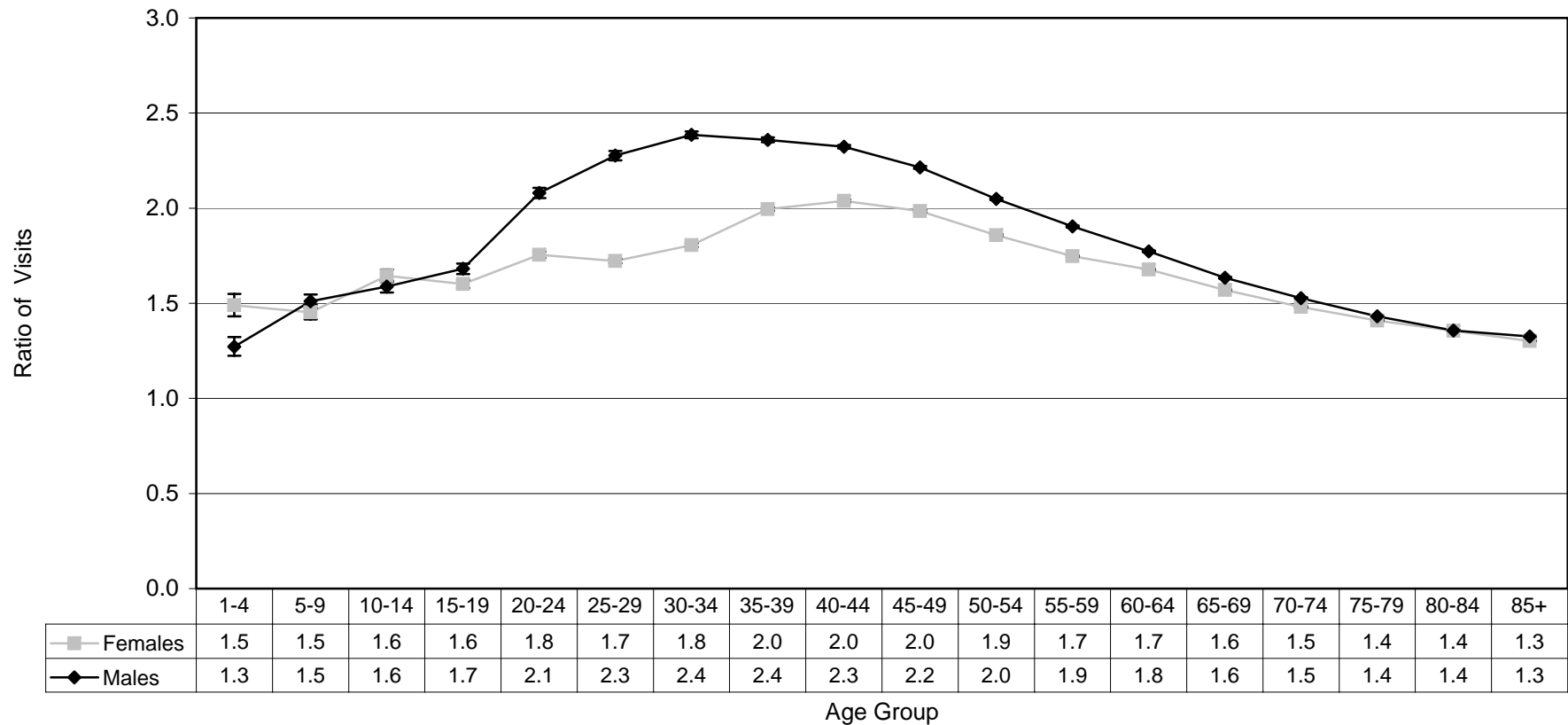


**Figure 8. Ratio of Number of Visits to Family Physicians by People Aged 1 Year and Older With Diagnosed Diabetes Compared to Those Without Diagnosed Diabetes, Canada\*, 2004-2005**



Source: Public Health Agency of Canada, using NDSS data files contributed by all provinces and territories, as of October 31, 2007

\*Québec and Nunavut data not included in analysis

‡The 95% Confidence Interval shows an estimated range of values which is likely to include the true rate ratio 19 times out of 20.